

PB-EST



Front-To-Back Tarp System

Models 8100 • 9100 • RT • RTX

Supplement Manual

&

Parts Book



Automated Covering Systems



6/2023



1.0 IMPORTANT INFORMATION

This supplement document is to be used in addition to the standard Operator Manual that was shipped with your implement along with the documents that Roll-Rite provides for their equipment.

Meyer Manufacturing Corporation
674 W. Business Cty Rd A
Dorchester, WI 54425
Phone: 1-800-325-9103
Fax: 715-654-5513
Email: parts@meyermfg.com
Website: www.meyermfg.com



2.0 PRE-DELIVERY & DELIVERY CHECK LIST

MEYER MANUFACTURING CORPORATION

Phone: 715-654-5132 • Toll-Free: 1-800-325-9103 • P.O. Box 405 • Dorchester, WI 54425

See Implement Owner's Manual for predelivery and delivery checklist and Meyer product registration.



3.0 INTRODUCTION

Congratulations on your purchase of a new Meyer farm equipment product. Undoubtedly you have given much consideration to your purchase and we're proud that you have selected Meyer. Pride in craftsmanship, engineering and customer service have made Meyer products the finest in the farm equipment industry today.

There is no substitute for quality. That is why thousands of people like you have purchased Meyer farm equipment. They felt it was the best equipment to serve their farming needs, now and in years to come. We ask that you follow our policy of "safety first", and we strongly suggest that you read through the "Owner / Operator's Manual & Parts Book" before operating your Meyer farm equipment. Meyer Manufacturing Corporation wants to thank you for not compromising quality. We are determined to offer excellence in customer service as well as provide you with the very best value for your dollar.

Sincerely,

All Employees of

MEYER MANUFACTURING CORPORATION

The information being provided, is not to supersede Roll-Rite's® documents, but to be used in conjunction with their documents.

See Roll-Rite's® manuals for details and warnings. www.rollrite.com or call Roll-Rite at 1-800-297-9905



IMPORTANT: You are urged to study this manual and follow the instructions carefully. Your efforts will be repaid in better operation and service as well as a savings in time and repair expense. Failure to read this manual and understand the machine could lead to serious injury. If you do not understand instructions in this manual, contact either your dealer or Meyer Manufacturing Corp. at Dorchester, WI 54425.



REPAIR PARTS: At the back of this manual is the repair parts section. All replacement parts are to be obtained from or ordered through your Meyer dealership. When ordering repair parts, refer to the parts section and give complete information including quantity, correct part number, detailed description and even model number and serial number of the implements which needs repair parts.

Manufacturer's Statement: Meyer Manufacturing Corporation reserves the right to make improvements in design, or changes in specifications at any time, without incurring any obligation to owners of units previously sold. This supersedes all previous published instructions.



4.0 MANUFACTURER'S WARRANTY

Roll-Rite's warranty will be applicable on all Roll-Rite components.



TABLE OF CONTENTS

1.0	IMPORTANT INFORMATION.....	2
2.0	PRE-DELIVERY & DELIVERY CHECK LIST	3
3.0	INTRODUCTION.....	5
5.0	SAFETY	11
5.1	SAFETY PRECAUTIONS	12
5.2	SAFETY SIGNS	12
5.3	SHUTOFF & LOCKOUT POWER.....	13
5.3.1	SHUTOFF & LOCKOUT POWER	13
5.3.2	REMOVE AND ISOLATE THE SOURCE OF ELECTRICAL POWER	14
5.3.3	RELEASING STORED ENERGY	14
5.3.3.1	DISSIPATING STORED SPRING ENERGY PRIOR TO SERVICE	14
6.0	PRE-OPERATION	17
6.1	STATIC INSPECTION	17
6.2	ELECTRICAL HOOK-UP	17
6.2.1	WIRING SCHEMATICS	18
6.2.1.1	9100 TRAILERS PRIOR TO SN 1391259.....	18
6.2.1.2	9100 TRAILERS SN 1391259 & LATER	19
6.3	START-UP AND SHUT-DOWN	20
6.4	OPERATIONAL CHECKS.....	20
6.5	CONTROLS	20
6.6	OPTIONAL EQUIPMENT.....	20
7.0	OPERATION	21
7.1	LOADING	21
8.0	MAINTENANCE	23
8.1	LUBRICATION.....	23
8.2	ADJUSTMENTS.....	23
8.2.1	TARP ADJUSTMENT	23
8.3	STORING AN IMPLEMENT WITH TARP SYSTEM	23

TABLE OF CONTENTS

9.0 PARTS REPAIR AND REPLACEMENT	25
ELECTRIC KIT WITH RELAY AND ROCKER SWITCH.....	26
SPOOL.....	28
7500/8720/RT/RTX SPOOL.....	29
BOW SETS	30
84" KNUCKLE PIVOT SET	31
KNUCKLE PIVOT COMPONENTS.....	32
DRIVER SIDE 84" KNUCKLE BOW ARM.....	33
PASSENGER SIDE 84" KNUCKLE BOW ARM.....	34
8-SPRING UNDER BODY PIVOT SET.....	35
6-SPRING UNDER BODY PIVOT SET.....	36
5-SPRING UNDER BODY PIVOT SET.....	37
8-SPRING PIVOT COMPONENTS.....	38
5 & 6 SPRING PIVOT COMPONENTS.....	39
RT/RTX 6-SPRING PIVOT COMPONENTS.....	40
8-SPRING PIVOT (DRIVER SIDE)	42
8-SPRING PIVOT (PASSENGER SIDE)	43
5 & 6-SPRING PIVOT (DRIVER SIDE).....	44
5 & 6-SPRING PIVOT (PASSENGER SIDE)	45
SPRING PACK BOLT ASSEMBLY	46
KNIT TARPS	47
NOTES.....	49
10.0 MAINTENANCE RECORDS	51

5.0 SAFETY

The Meyer implement is manufactured with operator safety in mind. Located on the implement are various safety signs to aid in operation and warn of danger or caution areas. Pay close attention to all safety signs on the implement.

Carefully follow the operating and maintenance instructions in this manual and all applicable safety laws. Failure to follow all safety procedures may result in serious injury or death.

Before attempting to operate this implement, read and study the following safety information. In addition, make sure that every individual who operates or works with the implement, whether family member or employee, is familiar with these safety precautions.

Meyer Mfg. Corp. provides guards for exposed moving parts for the operator's protection; however, some areas cannot be guarded or shielded in order to assure proper operation. The operator's manual and safety signs on the implement itself warn you of dangers and must be read and observed closely!



Safety Alert Symbol

This symbol is used to call attention to instructions concerning personal safety. Be sure to observe and follow these instructions. Take time to be careful!



DANGER

The signal word **DANGER** on the machine and in the manual identifies a hazardous situation which, if not avoided, WILL result in death or serious injury.



WARNING

The signal word **WARNING** on the machine and in the manual indicates a potentially hazardous situation which, if not avoided, COULD result in serious injury or death.



CAUTION

The signal word **CAUTION** on the machine and in the manual indicates a potentially hazardous situation which, if not avoided, MAY result in minor or moderate injury. It may also be used to alert against unsafe practices.

IMPORTANT

This notice identifies procedures which must be followed to avoid damage to the machine.

Danger, Warning, Caution, and instructional decals and plates are placed on the equipment to protect anyone working on or around this machine, as well as the components of the machine. All personnel operating or maintaining this equipment must familiarize themselves with all Danger, Warning, Caution, and instructional decals and plates.



5.1 SAFETY PRECAUTIONS



All individuals who will operate this implement must read and completely understand this Owner / Operator's and Parts Manual. Operator must receive instructions before operating the machine. Untrained operators can cause injury or death.

- DO NOT allow anyone to operate, service, inspect or otherwise handle this implement until all operators have read and understand all of the instructional materials in the Supplement and Parts Manual and have been properly trained in its intended usage.
- Operator's must not use drugs or alcohol which impair alertness or coordination while working. An operator who is taking prescription drugs must get medical advice to determine if he or she can safely operate a machine and the equipment.
- Make sure all personnel can READ and UNDERSTAND all safety signs.
- DO NOT allow minors (children) or inexperienced persons to operate this implement.
- DO NOT operate until all shields and guards are in place and securely fastened.
- DO NOT step up on any part of the implement at any time.
- DO NOT adjust, clean or lubricate while the implement is in motion.
- Inspect when first delivered and regularly thereafter; that all connections and bolts are tight and secure before operating.
- Know how to stop operation of the implement before starting it!
- Make certain everyone is clear of the implement before applying power.
- Keep hands, feet and clothing away from moving parts. Loose or floppy clothing should not be worn by the operator.
- Observe all applicable traffic laws when transporting on public roadways (where legal to do so). Check local laws for all highway lighting and marking requirements.
- Shut off and lock out power before adjusting, servicing, maintaining or clearing an obstruction from this machine. Refer to Section 5.3 SHUTOFF & LOCKOUT POWER.

5.2 SAFETY SIGNS



Read all safety signs on the implement and in this manual. Keep all safety signs clean and replace any damaged or missing safety signs before operating the equipment. Do not remove any safety signs. Safety signs are for operator protection and information.

See Roll-Rite's Side to Side Tarp Manual for all applicable safety signs.

5.3 SHUTOFF & LOCKOUT POWER



Any individual that will be adjusting, servicing, maintaining, or clearing an obstruction from this machine needs to ensure that this machine stays safely OFF until the adjustment, service, or maintenance has been completed, or when the obstruction has been cleared, and that all guards, shields, and covers have been restored to their original position. The safety of all individuals working on or around this machine, including family members, are affected. The following procedure will be referred to throughout this manual, so be familiar with the following steps.

5.3.1 Shutoff & Lockout Power

1. Think, Plan and Check

- a. **THINK** through the entire procedure and identify all the steps that are required.
- b. **PLAN** what personnel will be involved, what needs to be shut down, what guards/shields need to be removed, and how the equipment will be restarted.
- c. **CHECK** the machine over to verify all power sources and stored energy have been identified including, but not limited to, engines, hydraulic and pneumatic systems, springs and accumulators, and suspended loads known.

2. **Communicate** - Let everyone involved, including those working on or around this machine, that work is being done which involves keeping this machine safely "OFF".

3. Power Sources

- a. **LOCKOUT** - Shut off engines and take the key, or physically lock the start/on switch or control. Disconnect any power sources which are meant to be disconnected (i.e. electrical, hydraulic, and PTO of pull-type units).
- b. **TAGOUT** - Place a tag on the machine noting the reason for the power source being tagged out and what work is being done. This is particularly important if the power source is not within your sight and/or will need to be isolated for a longer period of time.

4. **Stored Energy** - Neutralize all stored energy from its power source. Ensure that this machine is level, set the parking brake, and chock the wheels. Disconnect electricity, block movable parts, release or block spring energy, release pressure from hydraulic and pneumatic lines, and lower suspended parts to a resting position.

5. **Test** - Do a complete test and personally double check all of the above steps to verify that all of the power sources are actually disconnected and locked out.

6. **Restore Power** - When the work has been completed, follow the same basic procedures, ensuring that all individuals working on or around this machine are safely clear of the machine before locks and tags are removed and power is restored.

IMPORTANT

It is important that everyone who works on this equipment is properly trained to help ensure that they are familiar with this procedure and that they follow the steps outlined above. This manual will remind you when to .

5.3.2 Remove and Isolate the Source of Electrical Power



WARNING

Failure to complete required actions in the order specified in this document may result in Hazardous Condition leading to serious personal injury or property damage.

Any of the following steps removes all sources of power from the Automated Tarp Covering System.

First Priority:

Disconnect all of the Negative Terminals from the 12V Battery System on the Truck Chassis.

Disconnecting the negative terminals will remove all power on the chassis, preventing current flow to and from the stored energy in the battery system.

Second Priority:

Disconnect the Trailer Plug from the Trailer Front Bulkhead. Lift the spring loaded cover lock and pull the plug out of the connector on the trailer front bulkhead. Disconnecting the trailer plug will remove all power from the trailer chassis and tarp covering system components.

Third Priority:

If neither of the first and second priority are available options, contact Roll Rite at 800-297-9905.

5.3.3 Releasing Stored Energy

The following instructions have been created using Roll Rite document #107320. For original and updated information go to www.rollrite.com.



WARNING

Before servicing this equipment, ensure that all personnel, including family members are familiar with the equipment and the safety hazards that are present, along with the safety practices that should be observed while working in this equipment.

5.3.3.1 Dissipating Stored Spring Energy Prior to Service



WARNING

Failure to complete required actions in the order specified in this document may result in Hazardous Condition leading to serious personal injury or property damage

Test if the system operates to close the tarp cover by pressing **Close** on the Covering System Motor Controller.

If the motor will operate and close the tarp cover:

1. Roll the tarp arm toward the Fully Covered position.
2. Stop rolling the tarp arm when it comes to rest on the dump body, or as the lowest height at the end of the truck or trailer.
3. The stored spring energy in the pivot is now at its lowest point and the hazard is minimized.

If the motor will not operate:

1. Using the 2" ratchet strap, securely fasten the top portion of the arm to a rigid location on the truck or trailer body.

NOTE: The attachment point on the frame and the ratchet mechanism must be accessible from ground level at a later point in the process of removal and isolation of spring energy.

2. Ratchet the arm down firmly to the trailer top rail or tarp stops to prevent movement of front arm from Stored Spring Energy.
3. Using the 10mm socket and wrench, remove the power wires from the motor terminals.
4. Using the 10mm socket and ratchet wrench, remove the black plastic motor cap located directly under the motor wire terminals.



NOTE: The brake circuit prevents the brake from being completely removed from the assembly. It is OK to leave the brake motor hanging from the wire leads.

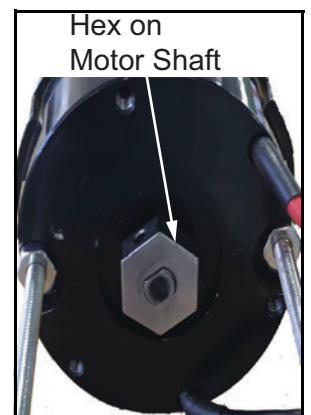
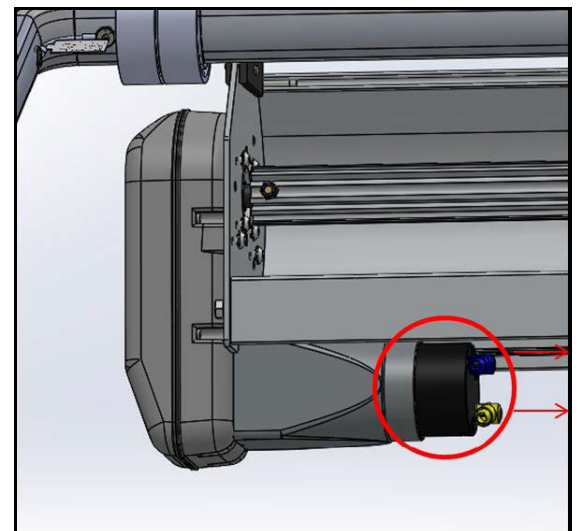
5. Using the 3 mm Allen Wrench, remove three screws which hold the brake to the electric motor.
6. Remove brake from the motor by pulling away from the top of the motor housing. The hex shaped brake coupler will become free of the brake assembly.

NOTE: The brake circuit will prevent the brake from being completely removed from the assembly. It is OK to leave the brake motor hanging from the wire leads.

7. Stand at ground level in front of the tarp axle, and away from the tarp arms. Slowly release the ratchet strap in small increments.

NOTE: By removing the motor brake, the arm is now free to move using stored potential spring energy. Letting out the ratchet strap will release the spring energy and rotate the Arm about the Front Pivot Pin.

8. Continue to release the ratchet strap in small increments until the cover is Fully Covered and the Tarp Arm is at its lowest position.
9. If the system does not move with the brake removed, it will be necessary to move the motor shaft with a 3/4" hex socket with 12" extension, and 1/2" drive ratchet. Then rotate the motor head clockwise for the passenger side, and counter clockwise for the driver side until the Tarp Arm is at rest at the Lowest Position.





6.0 PRE-OPERATION



Always keep all shields and guards in place and securely fastened. Keep hands, feet and clothing away.



DO NOT allow anyone to operate, service, inspect or otherwise handle this implement until all operators have read and understand all of the instructional materials in this Owner / Operator's and Parts Manual and have been properly trained in its intended usage.

Verify that the implement is securely fastened to the tractor/truck.

Verify that all electrical/hydraulic connections and bolts/hardware are tight and securely fastened before operating the implement.

Wear safety glasses to prevent eye injury when any of the following conditions exist:

- When fluids are under pressure.
- Flying debris or loose material is present.
- Tools are being used.

6.1 STATIC INSPECTION

Before operating the implement for the first time and each time thereafter, check the following items:

1. Check that all safety signs are in good and legible condition.
2. Check that all lubrication has been completed. Refer to Section 8.1 LUBRICATION.
3. Make sure all guards and shields are in place, secured and functioning as designed.
4. Check the tarp return strap is in good workable condition. Refer to Section 8.2 ADJUSTMENTS.
5. Check the tarp springs for damage.
6. Check for any damage to the tarp or any moving components of the tarp system.

6.2 ELECTRICAL HOOK-UP

Semi-Tractor hookup:

There is an electrical kit that needs to be installed onto the Semi-Tractor.

There is a 2-pin power cable/plug, 4-pin switch cable/plug, a circuit breaker, and a rocker switch that will need to be installed to operate the tarp system.

To outfit additional Semi-Tractors, call your parts department and order the appropriate kit which may be different depending on your serial number.

See electrical schematics.

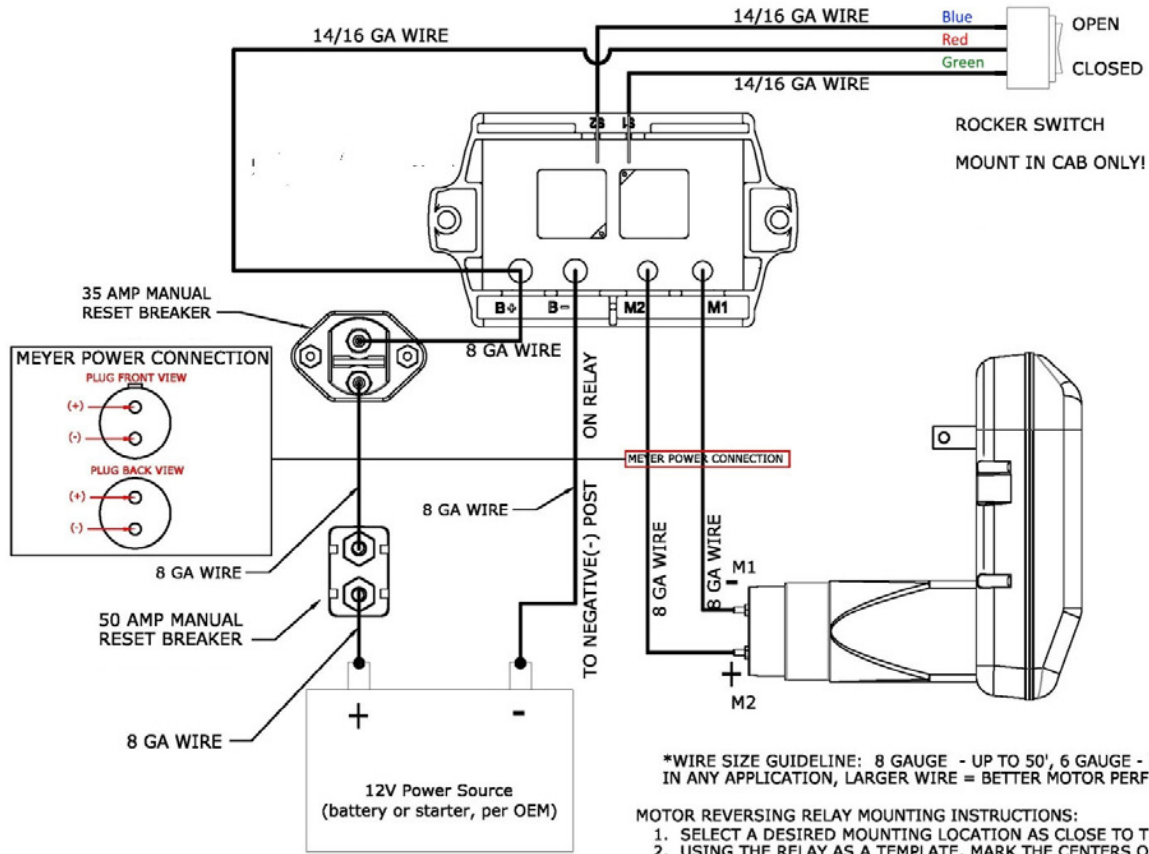
Truck mounts:

There is a 2-pin power cable, 4-pin switch cable, circuit breaker and a rocker switch that will need to be installed to operate the tarp system.

See Wiring Diagrams on 18 and 19.

6.2.1 Wiring Schematics

6.2.1.1 9100 Trailers Prior to SN 1391259



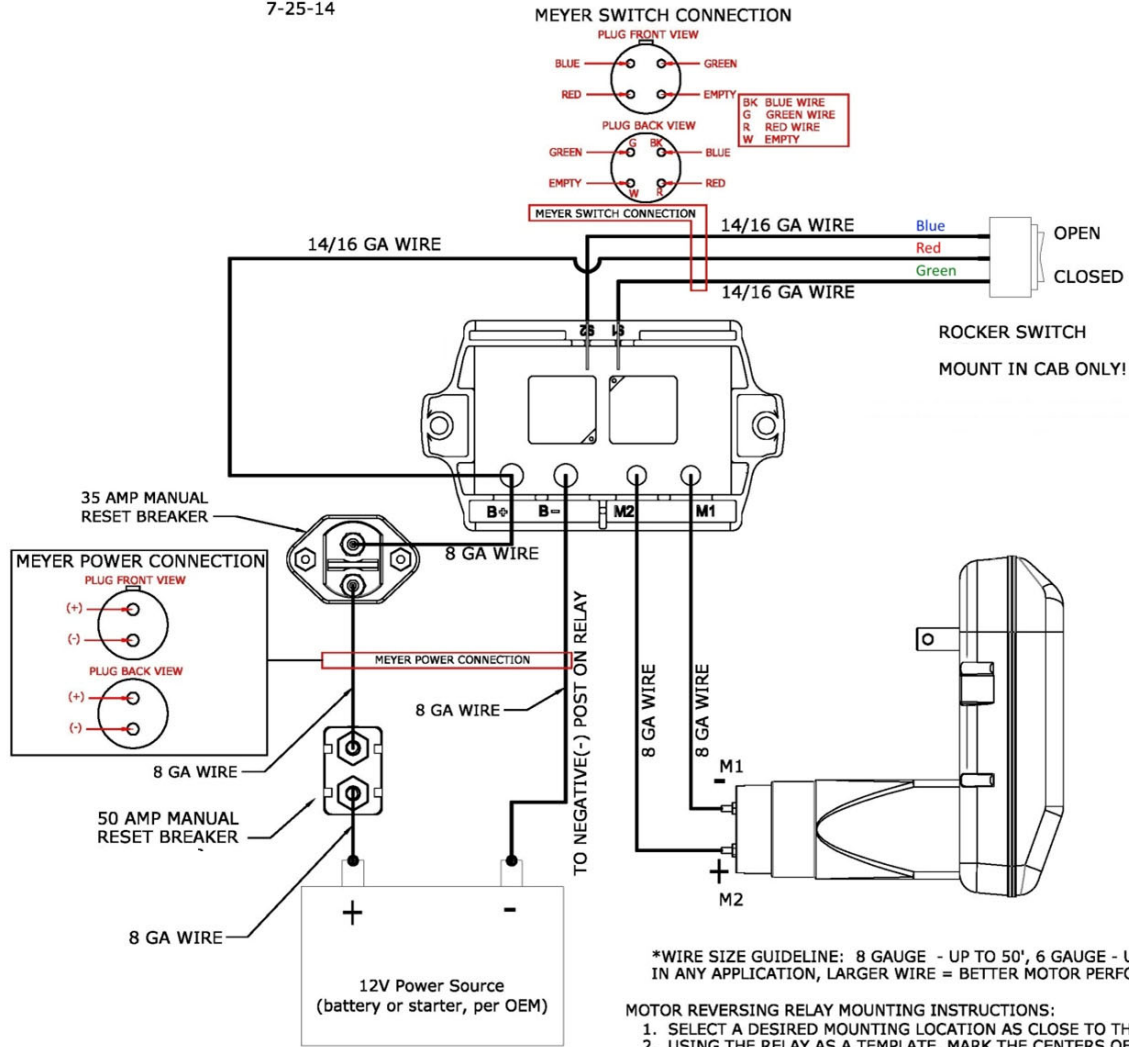
MOTOR REVERSING RELAY MOUNTING INSTRUCTIONS:

1. SELECT A DESIRED MOUNTING LOCATION AS CLOSE TO THE BATTERY AS POSSIBLE.
2. USING THE RELAY AS A TEMPLATE, MARK THE CENTERS OF THE MOUNTING HOLES.
3. USING A 1/4" DRILL BIT, DRILL THE HOLES MARKED IN THE PREVIOUS STEP.
4. MOUNT THE RELAY USING THE PROVIDED BOLTS AND NUTS.
5. WIRE THE RELAY ACCORDING TO THE WIRING DIAGRAM.
6. APPLY DIELECTRIC GREASE TO ALL ELECTRICAL CONNECTIONS.

7-25-14

6.2.1.2 9100 Trailers SN 1391259 & Later

7-25-14



6.3 START-UP AND SHUT-DOWN



Disengage electric/ hydraulic power, engage the machine's parking brake, stop the engine and make sure all moving components are completely stopped before connecting, disconnecting, adjusting or cleaning this equipment.

Always keep all shields and guards in place and securely fastened. Keep hands, feet and clothing away.



Before operating the implement, look in all directions to ensure there are no bystanders, especially small children, in the work area.

This Tarp System is activated using electric power, it's wired directly to the battery.

6.4 OPERATIONAL CHECKS



Always keep all shields and guards in place and securely fastened. Keep hands, feet and clothing away.

Run your tarp all the way open and all the way closed to make sure of proper tarp operation.

6.5 CONTROLS

Operation:

To cover the load, actuate the switch to the close/cover position. The tarp will move from the tarped position.

NOTE: If tarp is operating opposite of what is noted on the switch, check electrical wiring circuit.

- Release the switch when the tarp arms have contacted the rear gate or top rails.
- To uncover the load, actuate the switch to the open/uncover position.
- The gear motor will wrap the tarp around the tarp axle causing the axle to move from the tarped position to the stowed position.
- Release the switch/lever when the tarp arms are contacting the spool housing.
- Never travel with the tarp in a partially covered position. The trailer should be fully covered when traveling.

6.6 OPTIONAL EQUIPMENT

An optional RF control is available.

With this control, the rocker switch is disconnected or not installed, and a receiver is connected in its place.

Using a Key Fob, you can program the unit to open and close.

With this option the rocker switch becomes inactive and should be removed.

The RF Control can be programmed to shut down after a specified amount of time, or indefinitely. See instruction 101797 for details at www.rollrite.com.

7.0 OPERATION



- **DO NOT** allow anyone to operate, service, inspect or otherwise handle this implement until all operators have read and understand all of the instructional materials in this Operator's and Parts Manual and have been properly trained in its intended usage.
 - **Before operating the implement, look in all directions to ensure there are no bystanders, especially small children, in the work area.**
 - **Do not climb or step on any part of the implement at any time.**
-
- Press the Open or Closed Button of the switch to operate the tarp system.
 - When using the optional RF control, use the buttons that were programmed to open and close the tarp system.
 - The Optional RF control key fob.

7.1 LOADING



Shutoff and lockout power before adjusting, servicing, maintaining, or clearing an obstruction from this machine. Refer to section 5.3 SHUTOFF & LOCKOUT POWER.

Open the tarp system so that it is open/stowed when loading.



8.0 MAINTENANCE



Shutoff and lockout power before adjusting, servicing, maintaining, or clearing an obstruction from this machine. Refer to section 5.3 SHUTOFF & LOCKOUT POWER.

Note: Maintenance intervals vary based on environmental conditions.

Roll-Rite® designs its tarping systems and power kits to be as maintenance free as possible, contributing to the overall value of the product.

8.1 LUBRICATION

Roll-Rite recommends that:

All electrical connections should be cleaned and greased regularly to prevent corrosion (fill all electrical boots, limit switch boots, etc. with dielectric grease). Electrical connections can be found at all motors, switches, contactors, limit switches, control boxes and batteries.

- All bearings with grease fittings must be greased regularly.
- Check and tension all set screws. Set screws should be tightened until they touch and then torque them $\frac{3}{4}$ of a revolution beyond that.
- Check motor mounting bolts and torque to 70 in-lbs (5.8 ft-lbs).
- All mounting hardware should be checked to ensure all system components are securely fastened.
- Visually inspect all moving parts for abnormal or excessive wear.

8.2 ADJUSTMENTS

The spring pack and front arm assembly in the front have three positions to adjust spring tension. If too much or too little spring tension is occurring an adjustment can be made. Refer to Section 5.3.2 Remove and Isolate the Source of Electrical Power. For more tension move the pin towards the spring and less tension move away from the spring.

8.2.1 Tarp Adjustment

Excessive tarp wear can occur if the tarp is not properly secured before traveling. Make sure the tarp is properly tensioned in the stowed or closed position before traveling.

8.3 STORING AN IMPLEMENT WITH TARP SYSTEM

LOCKOUT/TAGOUT the implement. Refer to Section 5.3 SHUTOFF & LOCKOUT POWER.

- Remove all material build-up.
- Lubricate the equipment. Refer to Section 8.1 LUBRICATION.
- Inspect tarp for wear or damage. Repair or replace components as necessary.
- Make appropriate adjustments to equipment. Refer to Section 8.2 Adjustments.
- Verify tarp is in stowed position. Refer to Section 8.2 Adjustments.
- Check for loose hardware, missing guards, or damaged parts.
- Check for damaged or missing safety signs (decals). Replace if necessary.
- Ensure the tarp rolls over the spool, not under.



9.0 PARTS REPAIR AND REPLACEMENT

WARNING

Before servicing this equipment, ensure that all personnel, including family members are familiar with the equipment and the safety hazards that are present, along with the safety practices that should be observed while working in this equipment.

CAUTION

Inspect the axles, o-beams, spindles, tires, hitches and all safety shielding, safety signs and safety lighting regularly. These parts if not watched closely, could pose potential injury or death. If any part is found in need of repair, follow the SHUTOFF & LOCKOUT POWER recommendations and have qualified personnel repair immediately.

CAUTION

Shutoff and lockout power before adjusting, servicing, maintaining, or clearing an obstruction from this machine. Refer to section 5.3 SHUTOFF & LOCKOUT POWER.

IMPORTANT

It is important that everyone who works on this equipment is properly trained to help ensure that they are familiar with this procedure and that they follow the steps outlined above. This manual will remind you when to SHUTOFF & LOCKOUT POWER.

At times, parts on this implement will become worn or damaged. Performing repairs on this implement can pose a risk of injury including death. To reduce risk, the party that will be doing the repair should be very knowledgeable of the implement and the equipment that they will be using to do the repair.

- Review the repair so that a plan can be put together and the proper equipment can be used to repair this implement safely and correctly.
- Personal safety equipment may include items such as safety glasses, protective footwear, hearing protection, gloves, fire retardant clothes, etc.

WARNING

Crushing Hazard:
Do Not work under suspended or blocked parts



- The use of hoists and/or supports may be needed to handle heavy components.
- If the implement is being repaired in the field, make sure the parking brake of the tractor is engaged, the implement is on solid and level ground.
- Welding and torching should be done by properly trained individuals who have proven their skills.

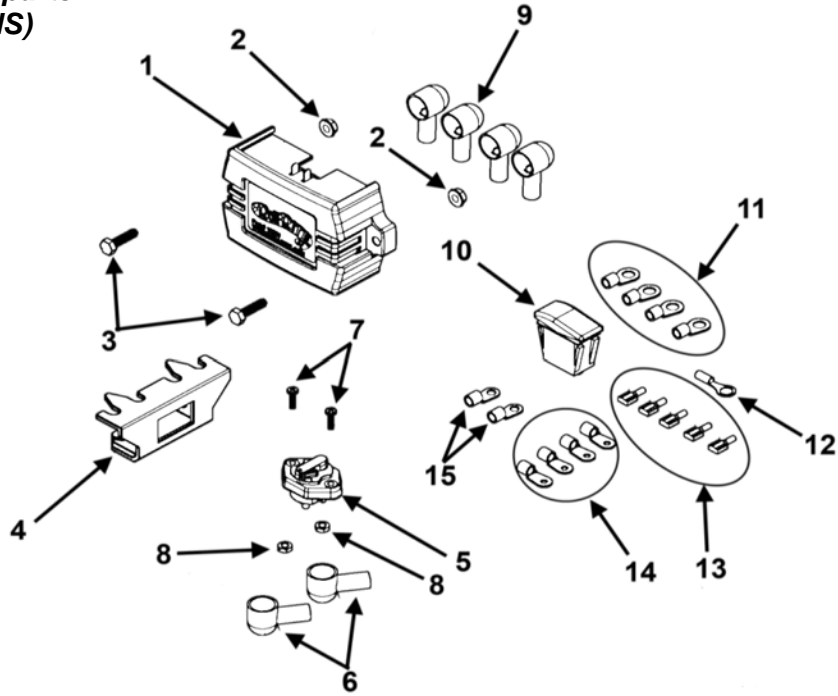
IMPORTANT

Call the factory for any additional details you may need to perform the repair. Some parts may come with instruction sheets to assist in the repair. Instruction sheets may be provided with the parts order. Otherwise, if available, instruction sheets can be e-mailed or faxed for your convenience. Call Meyer Manufacturing Corporation toll free at 1-800-325-9103 or email parts@meyermfg.com.

NOTE: Be environmentally friendly and dispose of any waste materials properly. Recycle when appropriate.

ELECTRIC KIT WITH RELAY AND ROCKER SWITCH

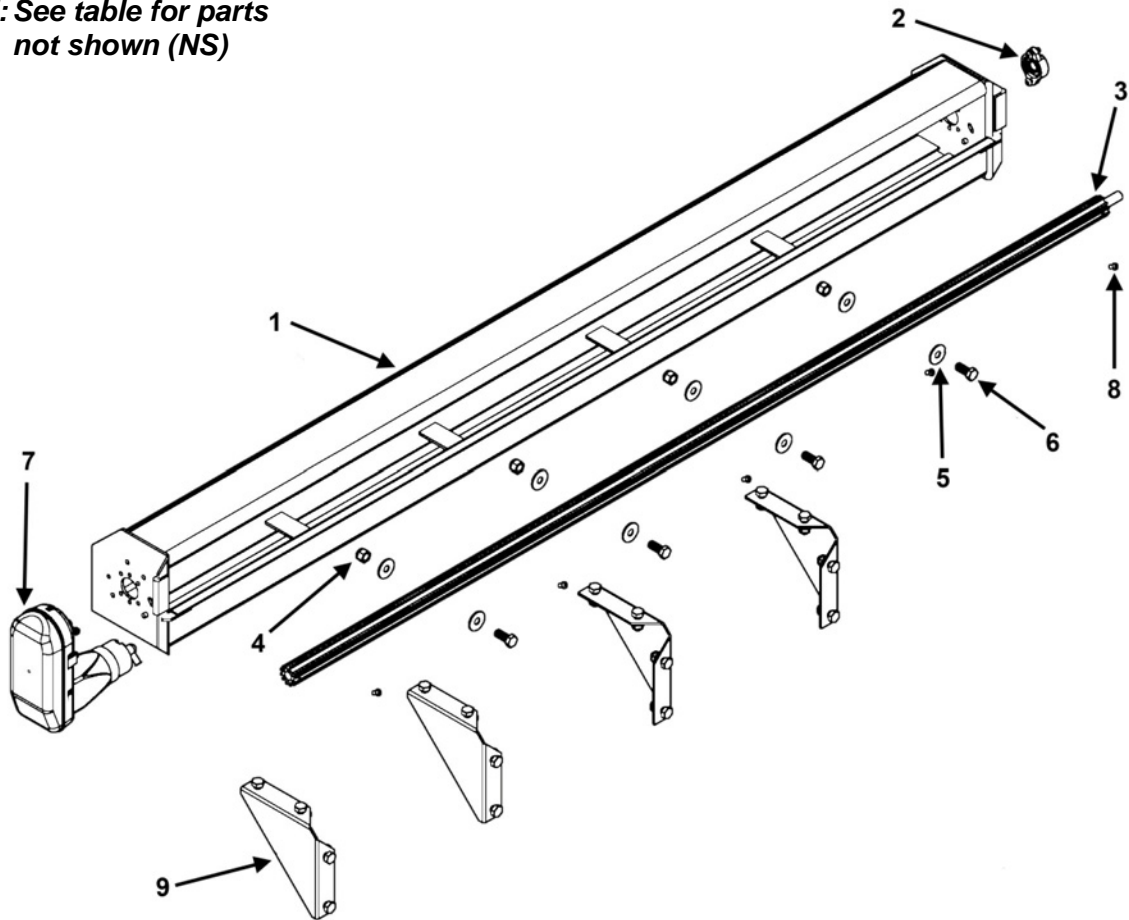
NOTE: See table for parts
not shown (NS)



KEY	PART NUMBER	QTY	DESCRIPTION
0	100-8003-3	1	Electric Kit With Relay & Rocker Switch
1	100-8000-1-1-5	1	Front to Back Relay
2	810-2520-Z	2	1/4" Spin Lock Nut
3	851-2520-1Z	2	1/4" x 1" Hex Head Bolt
4	100-8000-1-1-7	1	Mounting Bracket For Rocker Switch
5	100-8000-1-1-5-2	1	35 Amp Outdoor Manual Reset Circuit Breaker
6	156-B-18-10-1	2	Rubber Boot For Motor
7	803-0832-.75Z	2	8-32 x 3/4" Phillips Pan Head Bolt
8	813K-1032-Z	2	#10-32 Keps Nut
9	156-B-8-2-1	4	Rubber Boot
10	100-8000-1-1-6	1	Rocker Switch
11	156-RT-6-375-1	4	Terminal, 6 GA With 3/8" Eye (Prior to SN QD15216, 15T3242, 1581282, 1491374, 15T9205) (Including SN SI148720300 & SV147500294)
	156-RT-8-375-1	4	Terminal, 8 GA With 3/8" Eye (SN QD15216, 15T3242, 1581282, 1491374, 15T9205 & Later)
12	156-RT-14-375-1	1	14 GA Insulated Terminal with 3/8" Ring
13	156-TFB-22-18-1	5	18 GA Insulated Quick Disconnect Terminal
14	156-RT-6-190-1	4	Terminal, 6 GA With 3/16" Eye For Motor (Prior to SN QD15216, 15T3242, 1581282, 1491374, 15T9205) (Including SN SI148720300 & SV147500294)
	156-RT-8-190-1	4	Terminal, 8 GA With #10 Eye For Motor (SN QD15216, 15T3242, 1581282, 1491374, 15T9205 & Later)
15	156-RT-6-250-1	2	6 GA Terminal With 1/4" Ring (Prior to SN QD15216, 15T3242, 1581282, 1491374, 15T9205) (Including SN SI148720300 & SV147500294)
	156-RT-8-250-1	2	8 GA Terminal With 1/4" Ring (SN QD15216, 15T3242, 1581282, 1491374, 15T9205 & Later)
NS	156-8/2-1	AR	8 GA Dual Conductor Wire
NS	100-8000-1-1-5-1	1	Circuit Breaker Mounting Bracket
NS	100-8003-4	1	16GA 3-Conductor Wire 15'
	100-8003-4-FT	20	16GA 3-Conductor Wire (20' For Semi Trailer Models)
NS	100-8003-2-1	1	Plug Half, Dual Conductor
	100-8003-2-2	1	Socket Half, Dual Conductor
	100-8003-2	1	Plug / Socket Set
NS	56-0005-1	1	4-Conductor Plug
	56-0004	1	4-Conductor Socket
NS	100-8000-1-1-10	1	Standard Front Control Bracket
	100-8000-1-1-12	1	Double Door Front Control Bracket
NS	TARP-TRACTOR-KIT	1	Truck Tractor Wiring Kit (To Set Up Another Truck Tractor) (Prior to SN 1391288)
	9100T-TRACTOR-KIT	1	Truck Tractor Wiring Kit (To Set Up Another Truck Tractor) (SN 1391288 & Later)

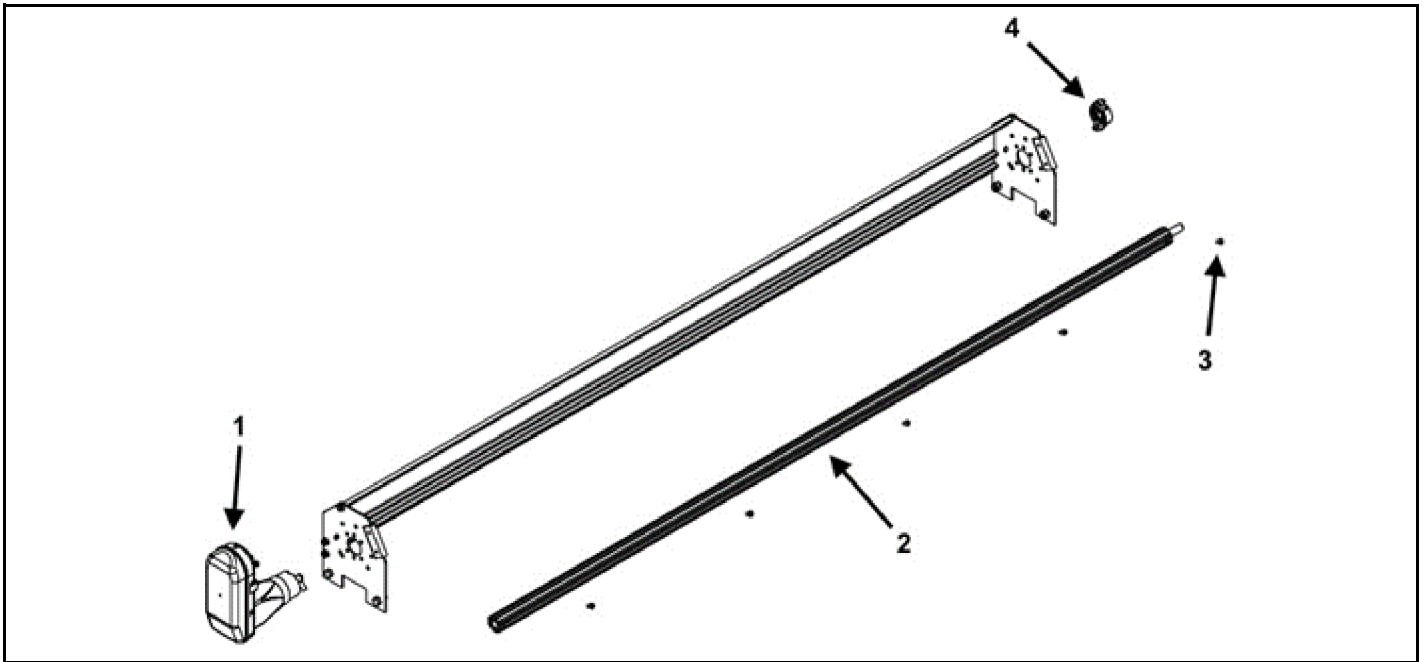
SPOOL

NOTE: See table for parts not shown (NS)



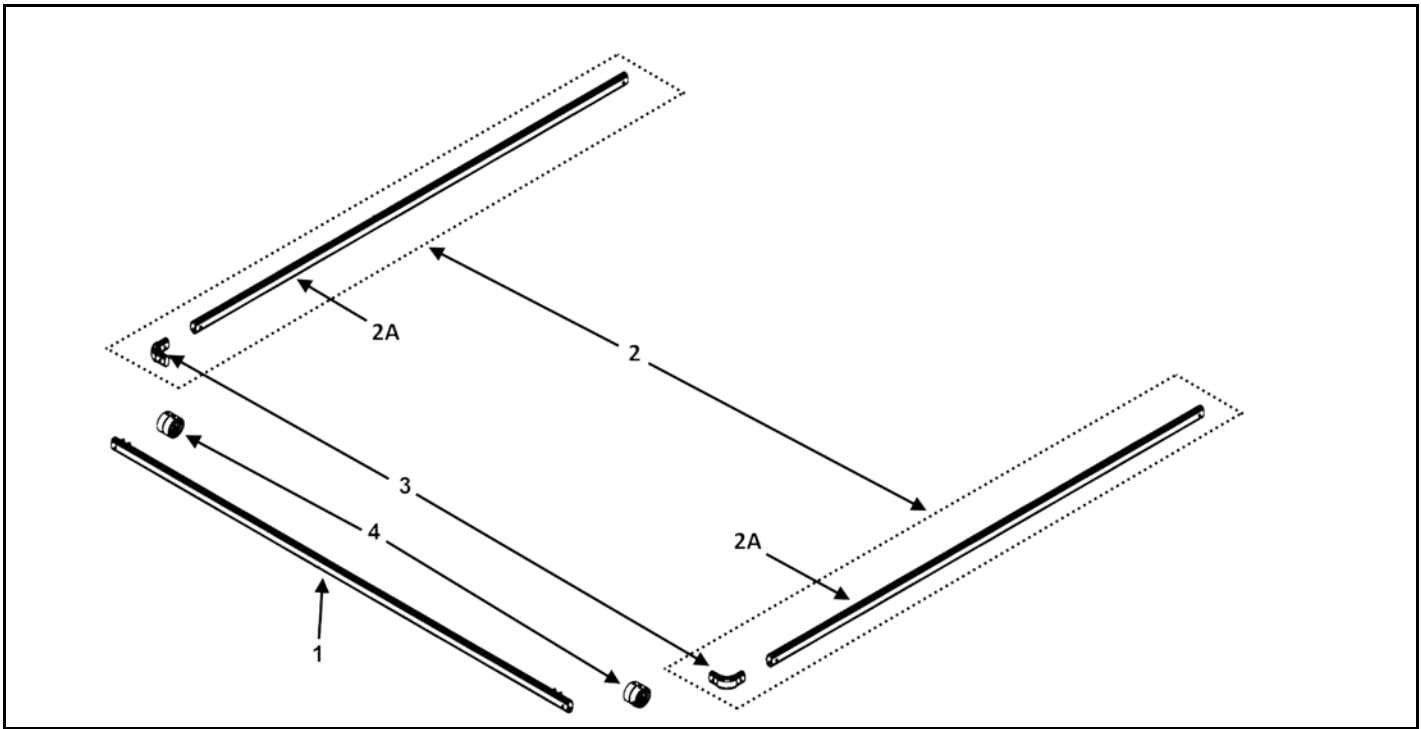
KEY	PART NUMBER	QTY	DESCRIPTION
0	100-8000-1-1	1	Spool Kit, SD Tarp Spool With 98" Housing
	100-8000-2-1	1	Spool Kit, SD Tarp Spool With 92" Housing
1	100-8000-1-1-15	1	98" Aluminum Replacement Housing
	100-8000-2-1-2	1	92" Aluminum Replacement Housing
2	100-8000-2-1-1	1	3/4" Flanged Axle Bearing
3	100-8000-1-1-8	1	97" Pre Threaded Aluminum Tarp Axle With Stub Shaft
	100-8000-2-1-9	1	91" Pre Threaded Aluminum Tarp Axle With Stub Shaft
4	815-6311-Z	4	5/8" Nylon Lock Nut
5	805-0063-Z	8	5/8" Flat Zinc Washer
6	851-6311-1.5Z	4	5/8" x 1-1/2" Bolt Zinc
7	100-8000-1-1-1	1	Super Duty Gear Motor
8	802P-3118-.63Z	5	5/16" x 5/8" Button Head Bolt
9	100-8000-1-1-13	AR	Head Assembly Gusset
NS	25-0290	1	4100 Tarp Mount Angle
	25-8070	1	8100/9100 Tarp Mount Angle
NS	100-9990-15-1	1	4200/6200 Roof Bow

7500/8720/RT/RTX SPOOL



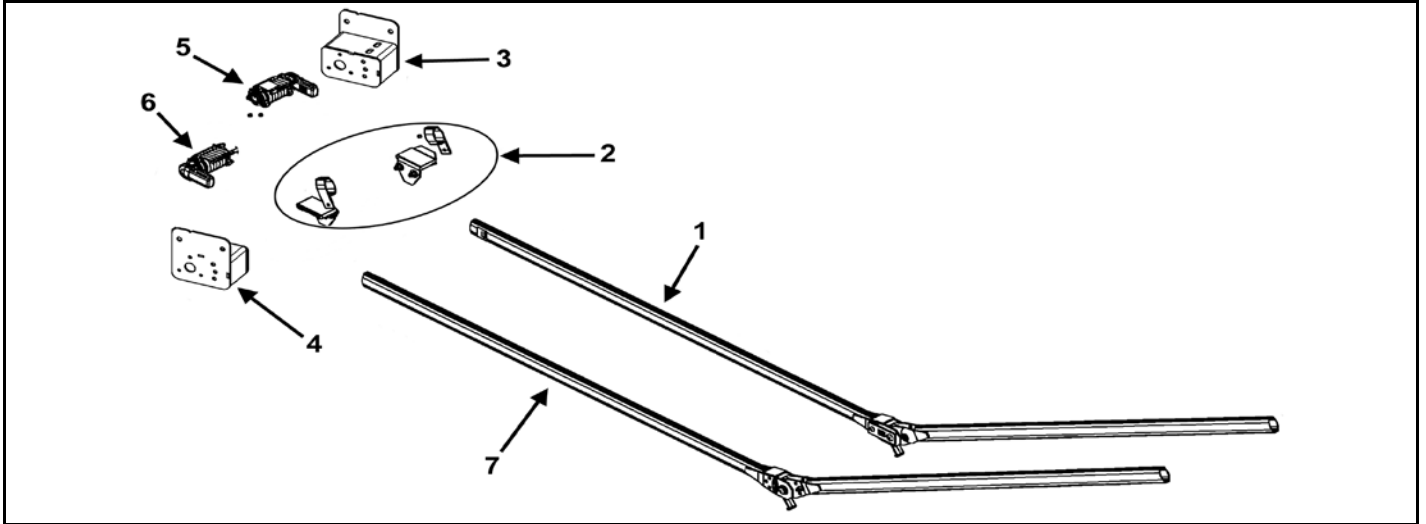
KEY	PART NUMBER	QTY	DESCRIPTION
0	100-8000-4-1	1	Spool Kit, SD Tarp Spool With 103" Housing (7500 & 8720)
	100-8000-5-1	1	Spool Kit, SD Tarp Spool With 97" Housing (RT/RTX)
1	100-8000-1-1-1	1	Super Duty Gear Motor
2	100-8000-4-1-4	1	103" Pre Threaded Aluminum Tarp Axle With Stub Shaft (7500 & 8720)
	100-8000-1-1-8	1	97" Pre Threaded Aluminum Tarp Axle With Stub Shaft (RT/RTX)
3	802P-3118-.63Z	5	5/16" x 5/8" Button Head Bolt
4	100-8000-2-1-1	1	3/4" Flanged Axle Bearing

BOW SETS



KEY	PART NUMBER	QTY	DESCRIPTION
0	100-8000-1-3	1	103-1/2" Bow Set, Aluminum Tarp Wide
	100-8000-2-2	1	Standard 98" Bow Set, Aluminum Tarp Wide
1	100-8000-1-7	1	Wide Top Tube For Bow Set - 103-1/2"
	100-8000-1-7-S	1	Top Tube for Bow Set 98"
2	100-8000-1-3-1	2	98" Side Arm With Corner For Bow Set
2A	100-8000-1-7-S	2	98" Side Arm Without Corner For Bow Set
3	100-8000-1-3-2	2	Castings, 90° Bow Tube Corners
4	100-8000-2-4	2	Tarp Centering Flange (Pair)

84" KNUCKLE PIVOT SET



KEY	PART NUMBER	QTY	DESCRIPTION
1	See Page 33	1	Pivot Tube (Driver Side)
2	See Page 32	1	Knuckle Pivot Set
3	See Page 32	1	Pivot Box Only, 5/6 Spring (Driver Side)
4	See Page 32	1	Pivot Box Only, 5/6 Spring (Passenger Side)
5	See Page 44	1	Spring Pack Assembly (Driver Side)
6	See Page 45	1	Spring Pack Assembly (Passenger Side)
7	See Page 34	1	Pivot Tube (Passenger Side)

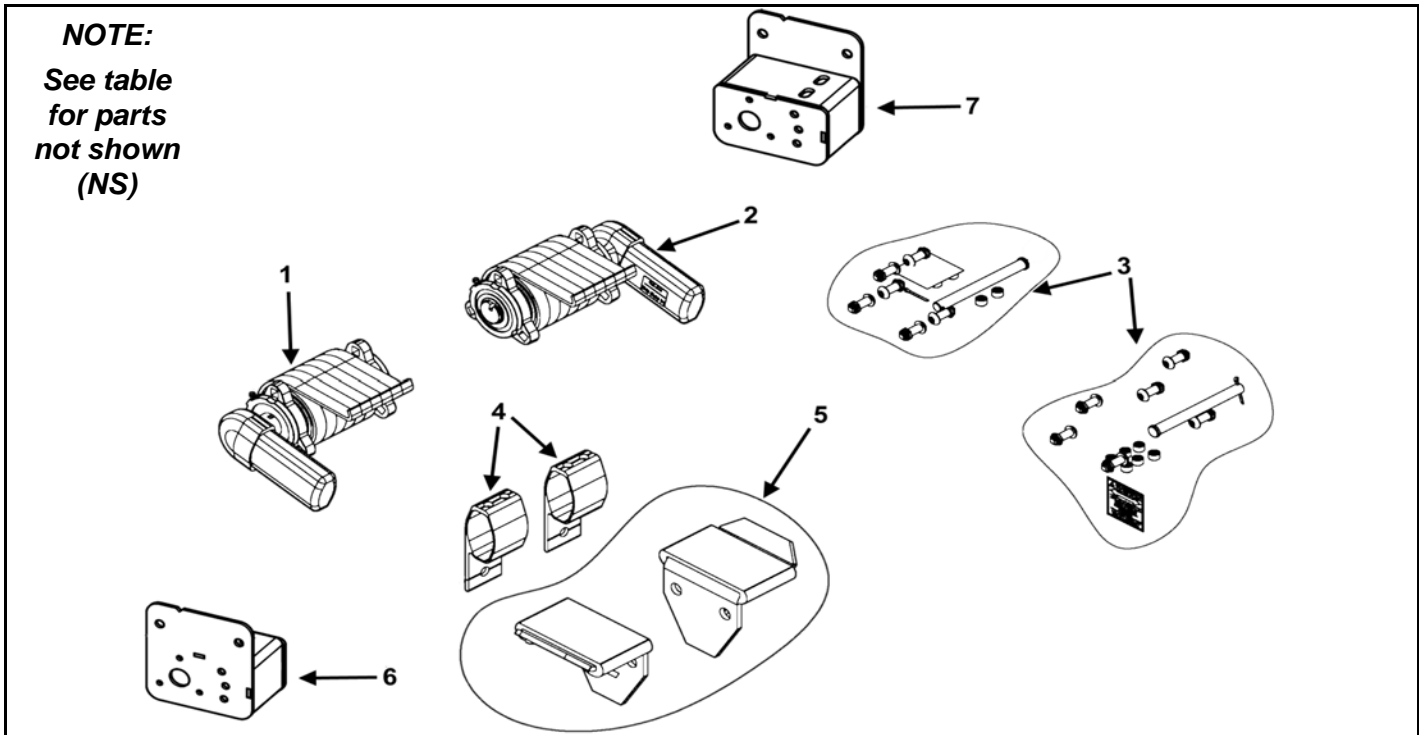
Used in the Following Systems:

TARP-9130T-KNIT

TARP-9136-KNIT

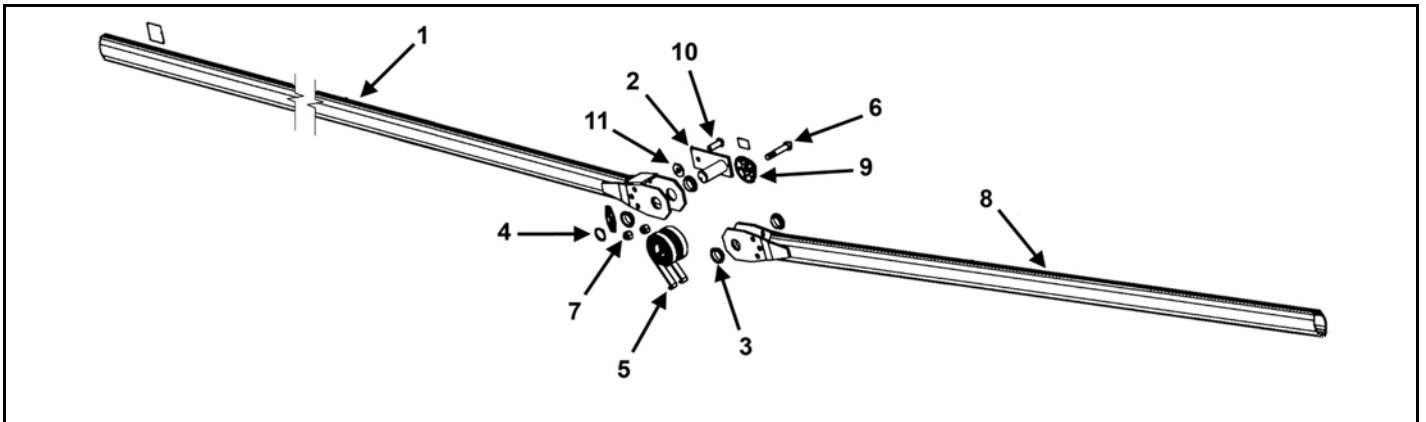
TARP-9140T-KNIT

KNUCKLE PIVOT COMPONENTS



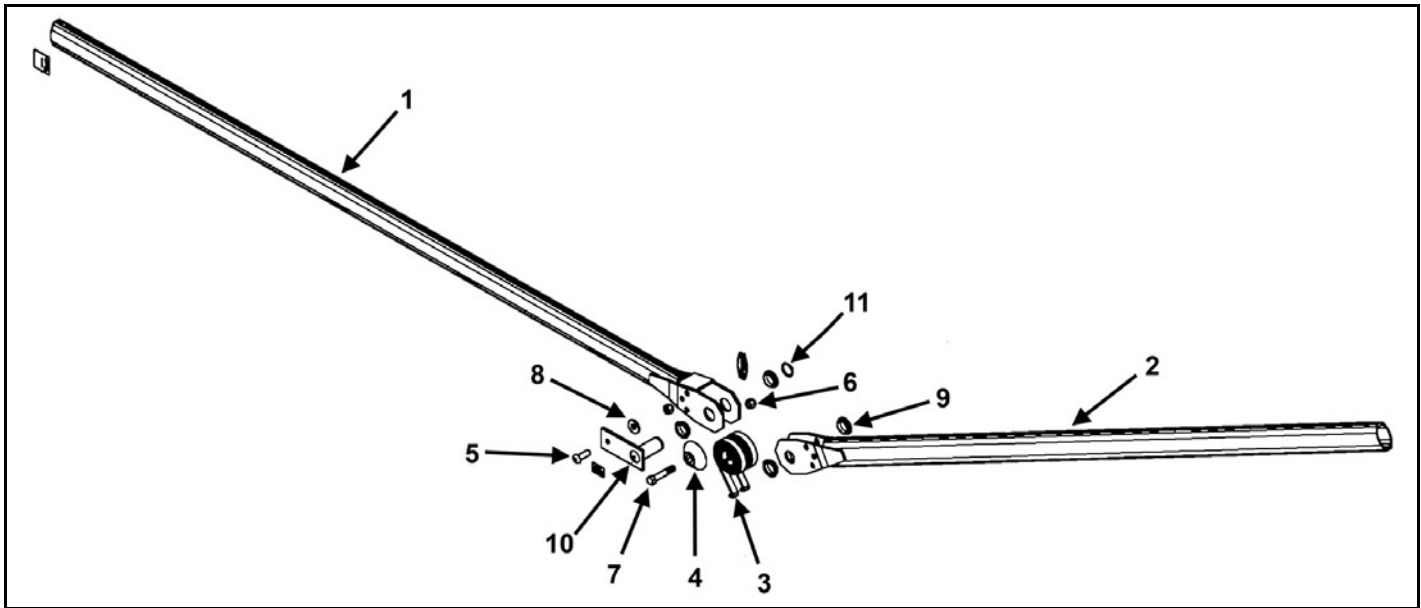
KEY	PART NUMBER	QTY	DESCRIPTION
1	See Page 45	1	Spring Pack Assembly (Passenger Side)
2	See Page 44	1	Spring Pack Assembly (Driver Side)
3	See Page 46	2	Bolt Kit For 5/6 Spring Pivot
4	100-8008-3-1-5	2	Bracket, Pivot Tie Down With Tapped Holes
5	100-8000-1-9-1	1	Bracket, Aluminum Stop Bracket (Pair); Knuckle Pivot Only
6	100-8000-1-20-1-1	1	6-Spring Pivot Box
7	100-8000-1-20-2-1	1	6-Spring Pivot Box
NS	25-0350	1	4100/4200 Left Tarp Mount Bracket
	25-0350-S	1	6200 Left Tarp Mount Bracket
	25-8072	1	8100 Left Tarp Mount Bracket
NS	25-0351	1	4100/4200 Right Tarp Mount Bracket
	25-0351-S	1	6200 Right Tarp Mount Bracket
	25-8071	1	8100 Right Tarp Mount Bracket
NS	25-0325-1	1	4100/4200 Top Scale Mount Bracket

DRIVER SIDE 84" KNUCKLE BOW ARM



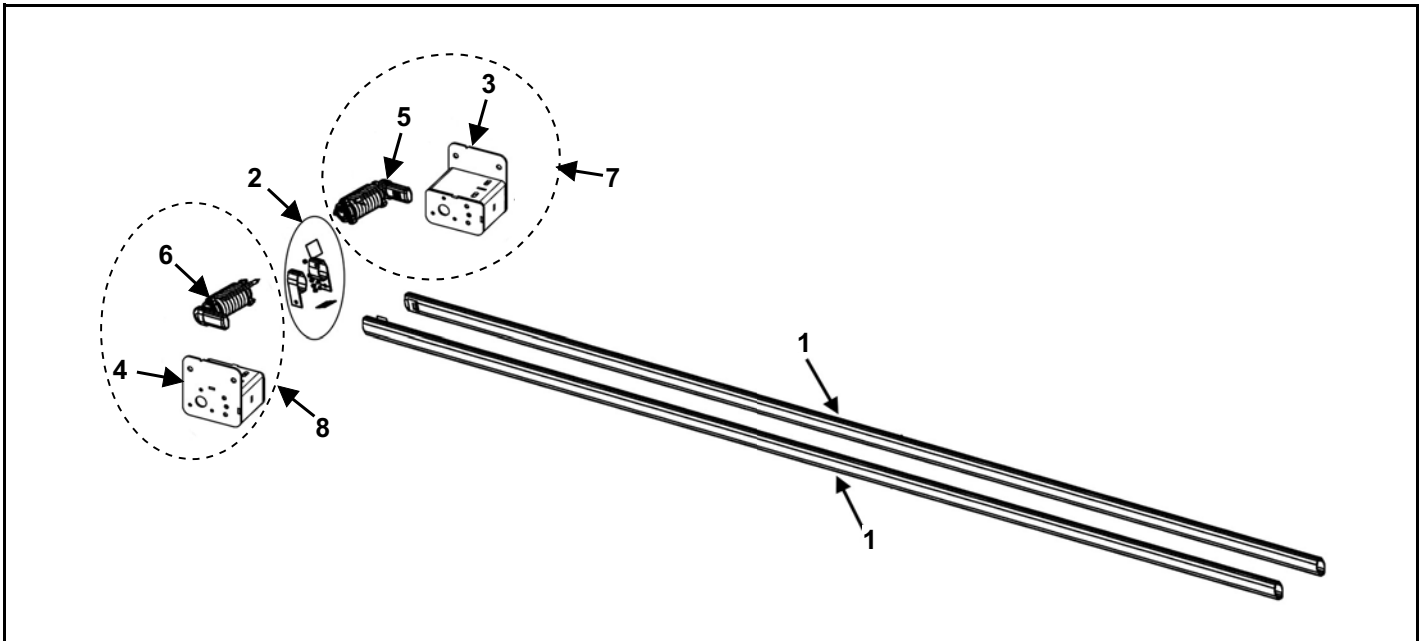
KEY	PART NUMBER	QTY	DESCRIPTION
1	100-8000-1-9-9	1	Pivot Tube, 84" Knuckle Base (No T-bushings or screws)
2	100-8000-1-9-4	1	Knuckle Pin, For Pivots Driver Side (No Snap Ring or Decal)
3	100-8000-1-9-5	4	1-1/4" Poly T-Bushing For Pivot Pin
4	100-8000-1-2-9	1	Snap Ring, 1-1/4" External For Pivot Pin
5	100-8000-1-2-12	2	Spring, Spiral Torsion 1-1/4"
6	851-5013-2.75Z	1	Bolt, 1/2" x 2-3/4" Hex Head Bolt
7	815-5013-Z	2	1/2"- 13 Nylon Lock Nut
8	100-8000-1-9-6	1	Pivot Tube, Upper Arm For 84" Knuckle Pivot (No T-Bushings or Set screws)
9	100-8000-1-9-7	1	Bumper, Knuckle Bow (Each)
10	802P-5013-1.5Z	1	1/2" x 1-1/2" Button Head Bolt
11	805-0050	1	1/2" Flat Washer

PASSENGER SIDE 84" KNUCKLE BOW ARM



KEY	PART NUMBER	QTY	DESCRIPTION
1	100-8000-1-9-9	1	Pivot Tube, 84" Knuckle Base (No T-Bushings or Screws)
2	100-8000-1-9-6	1	Pivot Tube, Upper Arm For 84" Knuckle Pivot (No T-Bushings or Set Screws)
3	100-8000-1-2-12	2	Spring, Spiral Torsion 1-1/4"
4	100-8000-1-9-7	1	Bumper, Knuckle Bow (Each)
5	802P-5013-1.5Z	1	1/2" x 1-1/2" Button Head Bolt
6	815-5013-Z	2	1/2" - 13 Nylon Lock Nut
7	851-5013-2.75Z	1	1/2" x 2-3/4" Hex Head Bolt
8	805-0050	1	1/2" Flat Washer
9	100-8000-1-9-5	4	1-1/4" Poly T-Bushing For Pivot Pin
10	100-8000-1-9-8	1	Knuckle Pin, For Pivots Passenger Side (No Snap Ring or Decal)
11	100-8000-1-2-9	1	Snap Ring, 1-1/4" External For Pivot Pin

8-SPRING UNDER BODY PIVOT SET



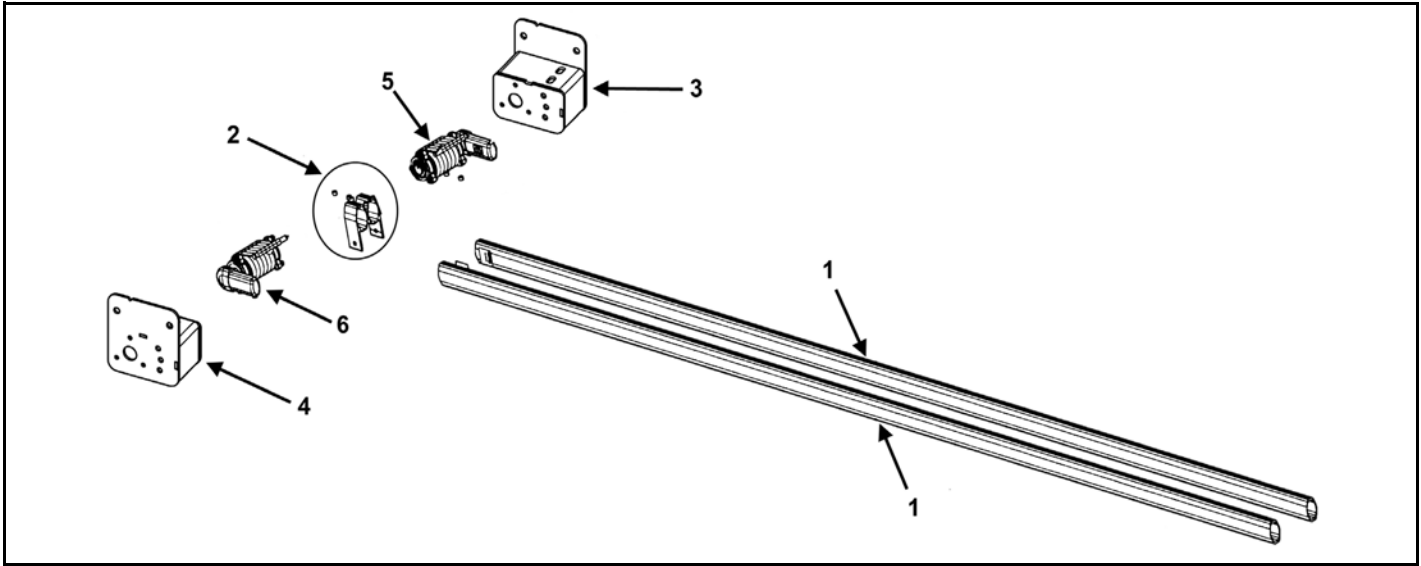
KEY	PART NUMBER	QTY	DESCRIPTION
0	100-8008-3-1-AS	1	8-Spring Under Body Pivot Set
1	100-8000-1-3-3	2	Under Body Mount 8-Spring - 192" Pivot Tube w/Set Screw
2	See Page 38	1	Pivot Set For #100-8008-3-1
3	See Page 38	1	Pivot Box Only, 8-Spring (Driver's Side)
4	See Page 38	1	Pivot Box Only, 8-Spring (Passenger Side)
5	See Page 42	1	Spring Pack Assembly (Driver's Side)
6	See Page 43	1	Spring Pack Assembly (Passenger Side)
7	100-8008-3-1-4	1	Passenger 8-Spring Under Body Pivot Assembly
8	100-8008-3-1-3	1	Driver 8-Spring Under Body Pivot Assembly

Used on the Following Systems:

TARP-9140T-KNIT-SA	9100T-RT-EST-40
TARP-9136T-KNIT-SA	9100T-RT-EST-36
TARP-9128T-KNIT-SA	9100T-RT-EST-30
8200-EST-24	9100T-RT-EST-28
8200-EST-26	9100-RT-EST-30*
	9100-RT-EST-36*

NOTE: *System does not use pivot box.

6-SPRING UNDER BODY PIVOT SET



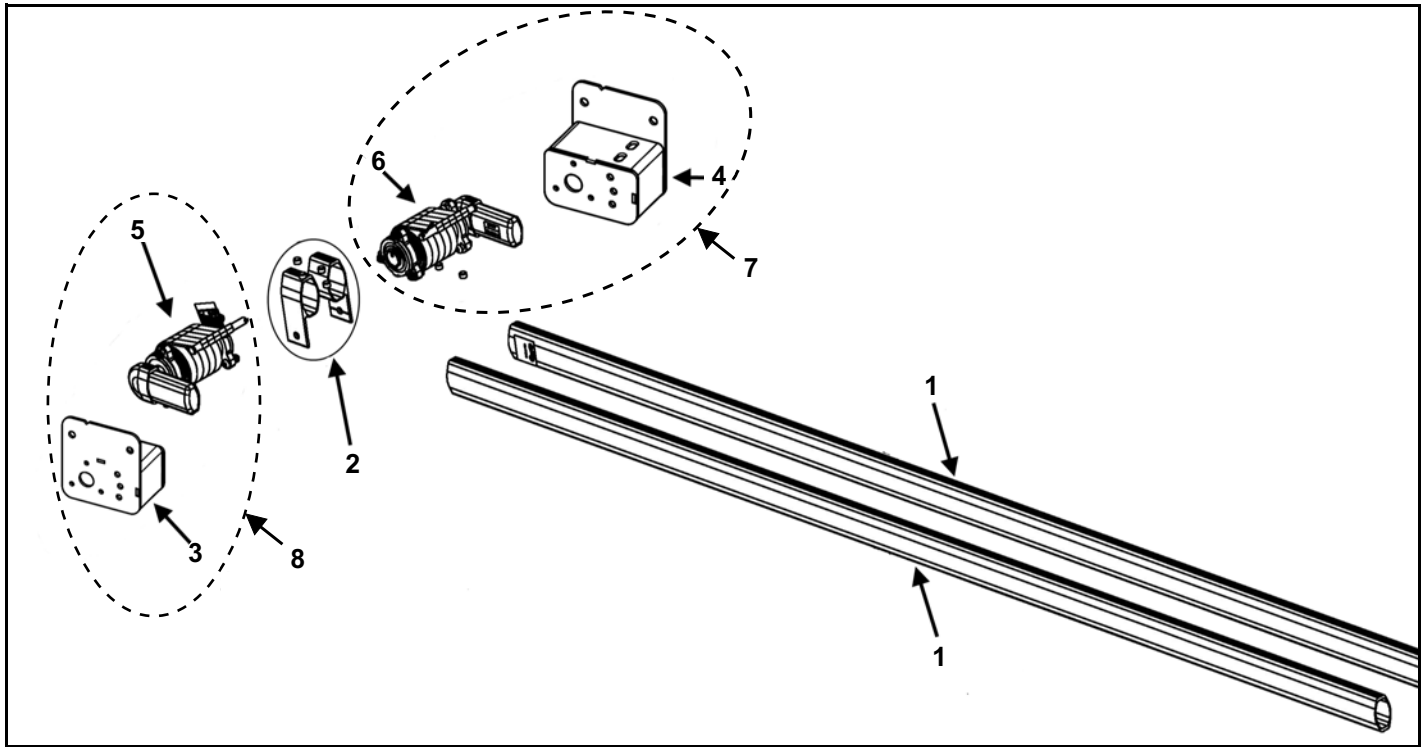
KEY	PART NUMBER	QTY	DESCRIPTION
0	100-8000-1-20-AS	1	6-Spring Under Body Pivot Set
1	100-8000-1-2-7	2	Side Arm – 144” Pivot Tube With Set Screw
2	See Page 39	1	Tie Down Brackets
3	See Page 39	1	5 & 6-Spring Pivot Box Only (Driver Side)
4	See Page 39	1	5 & 6-Spring Pivot Box Only (Passenger Side)
5	See Page 44	1	6-Spring Pivot (Driver Side)
6	See Page 45	1	6-Spring Pivot (Passenger Side)

Used in the Following Systems:

TARP-6224-KNIT	8200-EST-22
TARP-6224-KNIT-PKG	9100-RT-EST-26*
TARP-8126-KNIT	9100-RT-EST-28*

NOTE: *System does not use pivot box.

5-SPRING UNDER BODY PIVOT SET



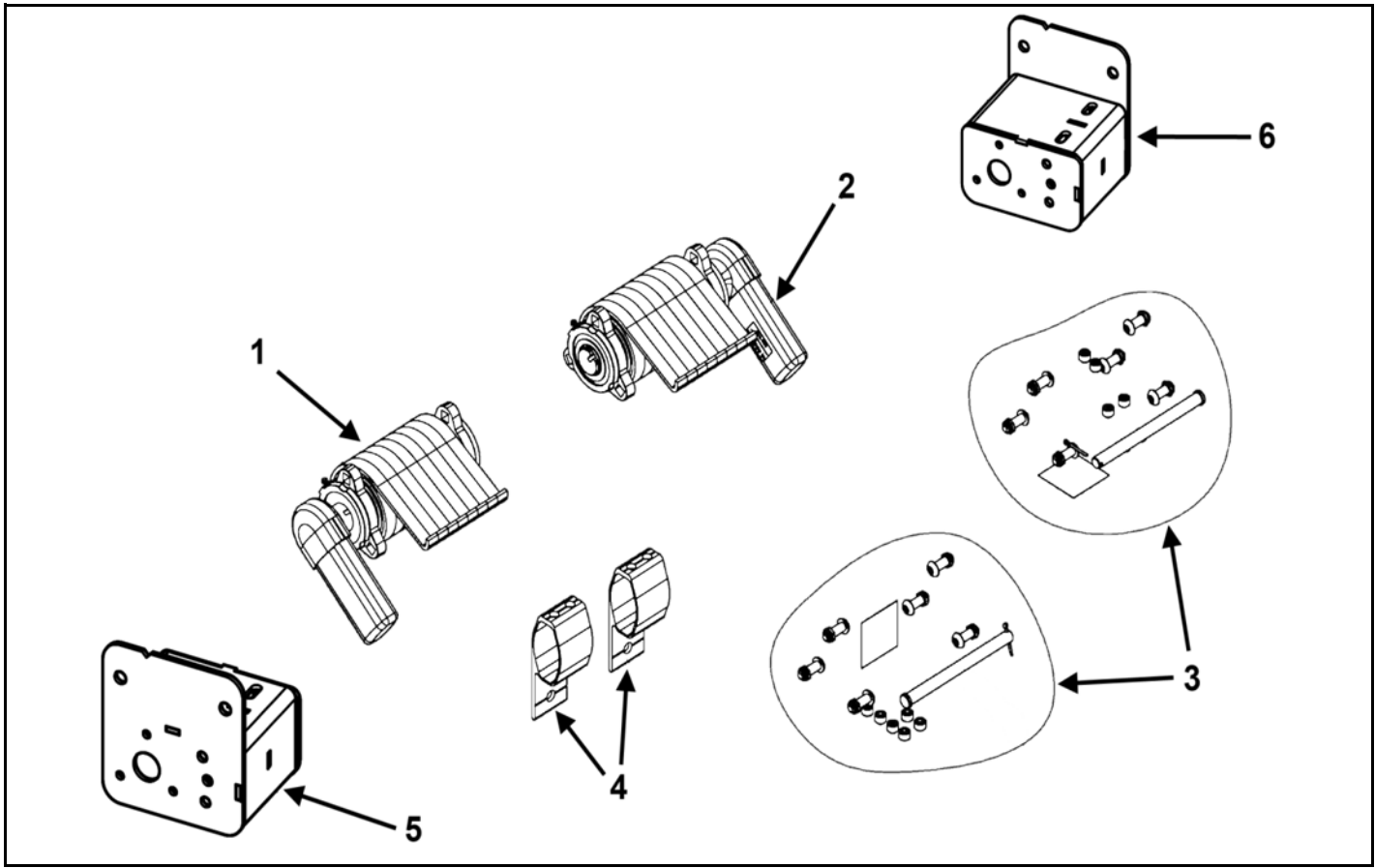
KEY	PART NUMBER	QTY	DESCRIPTION
0	100-8000-1-2-AS	1	5-Spring Under Body Pivot Set
1	100-8000-1-2-2	2	Side Arm - 96" Pivot Tube With Set Screw
2	See Page 39	1	Tie Down Brackets
3	See Page 39	1	5 & 6-Spring Pivot Box Only (Driver Side)
4	See Page 39	1	5 & 6-Spring Pivot Box Only (Passenger Side)
5	See Page 44	1	5-Spring Pivot (Driver Side)
6	See Page 45	1	5-Spring Pivot (Passenger Side)

Used in the Following Systems:

TARP-4118-KNIT	TARP-4222-KNIT	TARP-8124-KNIT
TARP-4120-KNIT	TARP-6220-KNIT	TARP-8124-KNIT-PL
TARP-4120-KNIT-PL	TARP-6222-KNIT	TARP-8122-SOLID
TARP-4122-KNIT	TARP-8118-KNIT	TARP-4124-KNIT
TARP-4124-KNIT-PL	TARP-8120-KNIT	TARP-4124-KNIT-F
TARP-4218-KNIT	TARP-8120-SOLID	TARP-8720-KNIT
TARP-4218-KNIT-PL	TARP-8122-KNIT	TARP-7500-KNIT
TARP-4220-KNIT	TARP-8122-KNIT-PL	9100-RT-EST-24*

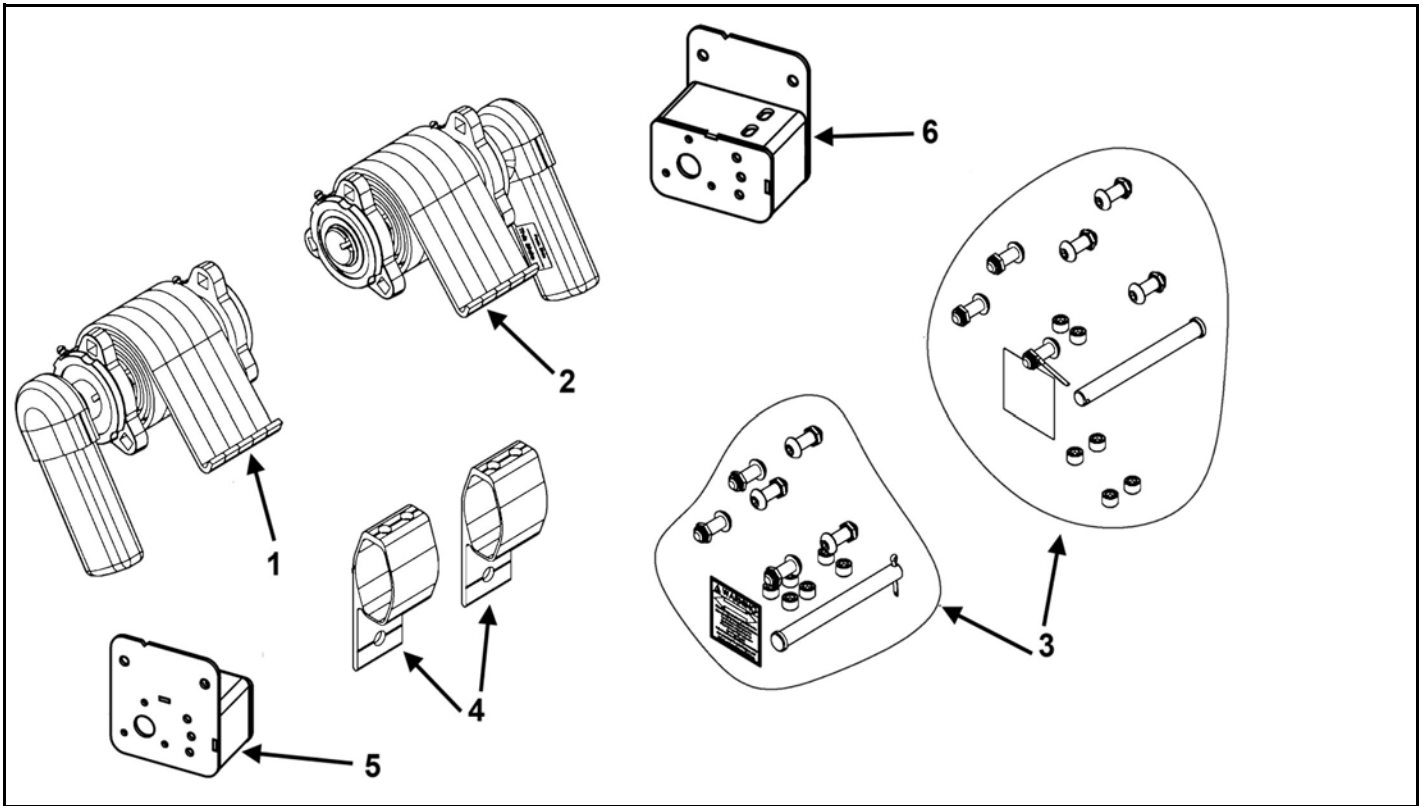
NOTE: *System does not use pivot box.

8-SPRING PIVOT COMPONENTS



KEY	PART NUMBER	QTY	DESCRIPTION
0	100-8008-3-1-AS	1	8-Spring Pivot Components
1	See Page 42	1	8-Spring Pivot (Driver Side)
2	See Page 43	1	8-Spring Pivot (Passenger Side)
3	See Page 46	2	Bolt Kit
4	100-8008-3-1-5	2	Bracket, Pivot Tie Down With Tapped Holes
5	100-8008-3-1-3-1	1	Pivot Box Only, 8-Spring (Driver Side)
6	100-8008-3-1-4-1	1	Pivot Box Only, 8-Spring (Passenger Side)

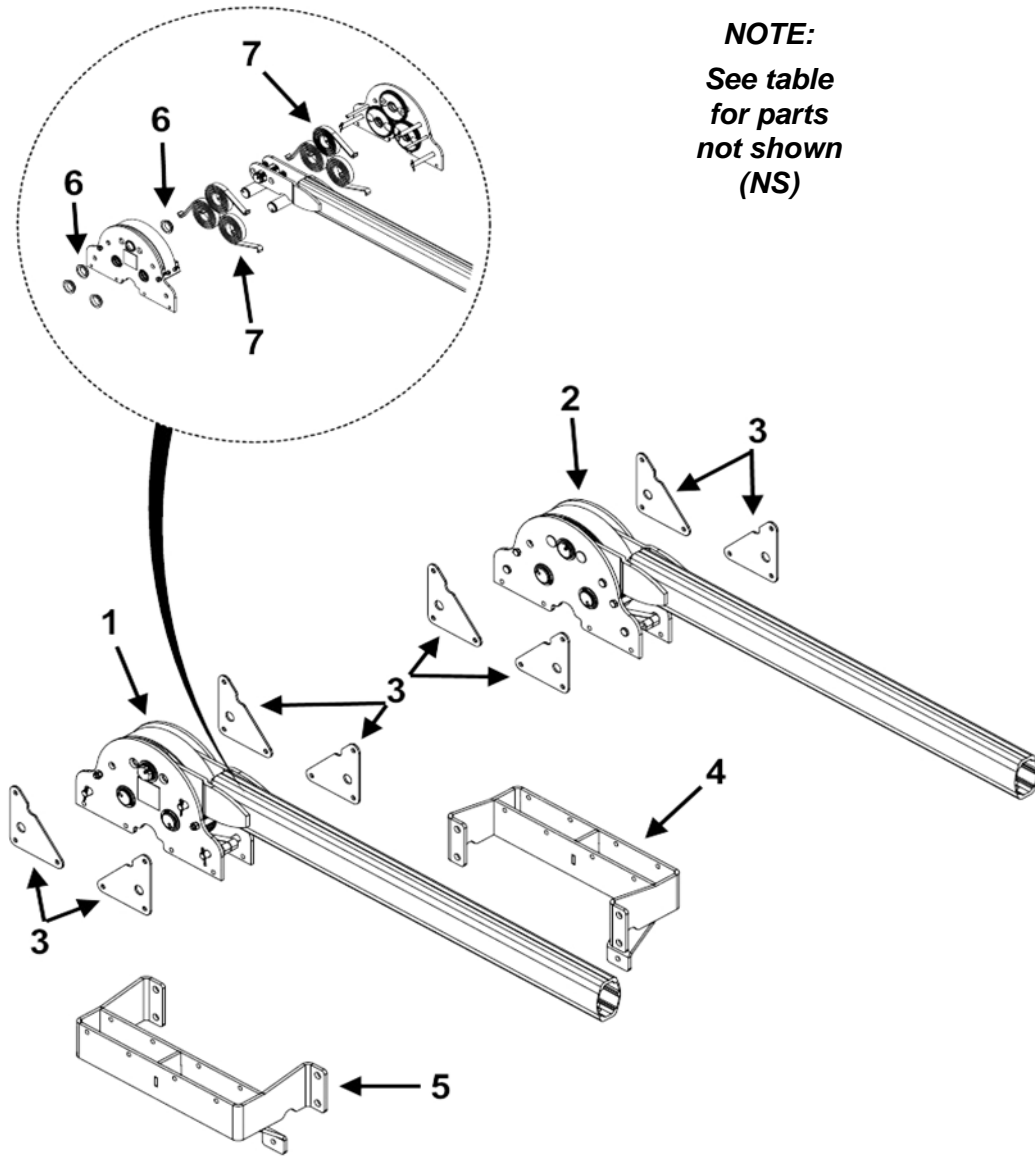
5 & 6 SPRING PIVOT COMPONENTS



KEY	PART NUMBER	QTY	DESCRIPTION
0	100-8000-1-2-AS	1	5-Spring Pivot Set
	100-8000-1-20-AS	1	6-Spring Pivot Set
1	See Page 44	1	5 & 6-Spring Pivot (Driver Side)
2	See Page 45	1	5 & 6-Spring Pivot (Passenger Side)
3	See Page 46	2	Bolt Kit For Boxless Pivot
4	100-8008-3-1-5	2	Bracket, Pivot Tie Down With Tapped Holes
5	100-8000-1-20-1-1	1	5 & 6-Spring Pivot Box Only (Driver Side)
6	100-8000-1-20-2-1	1	5 & 6-Spring Pivot Box Only (Passenger Side)

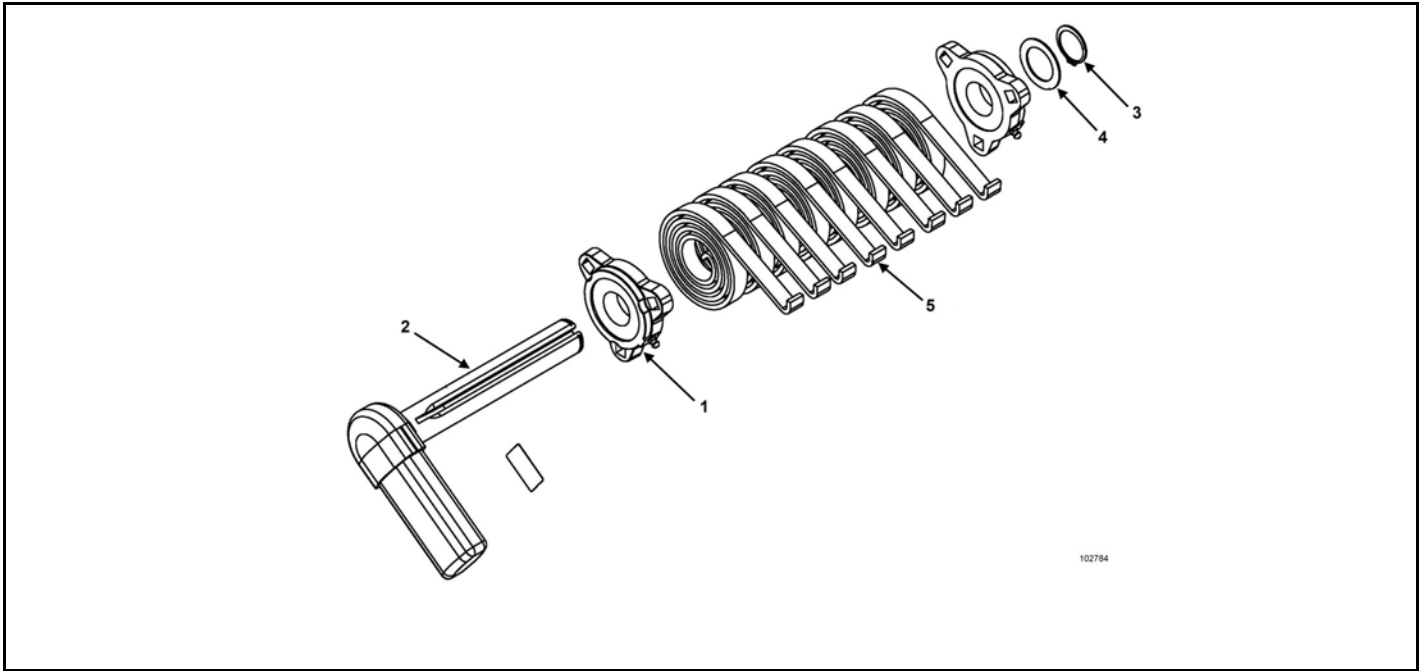
RT/RTX 6-SPRING PIVOT COMPONENTS

NOTE:
See table
for parts
not shown
(NS)



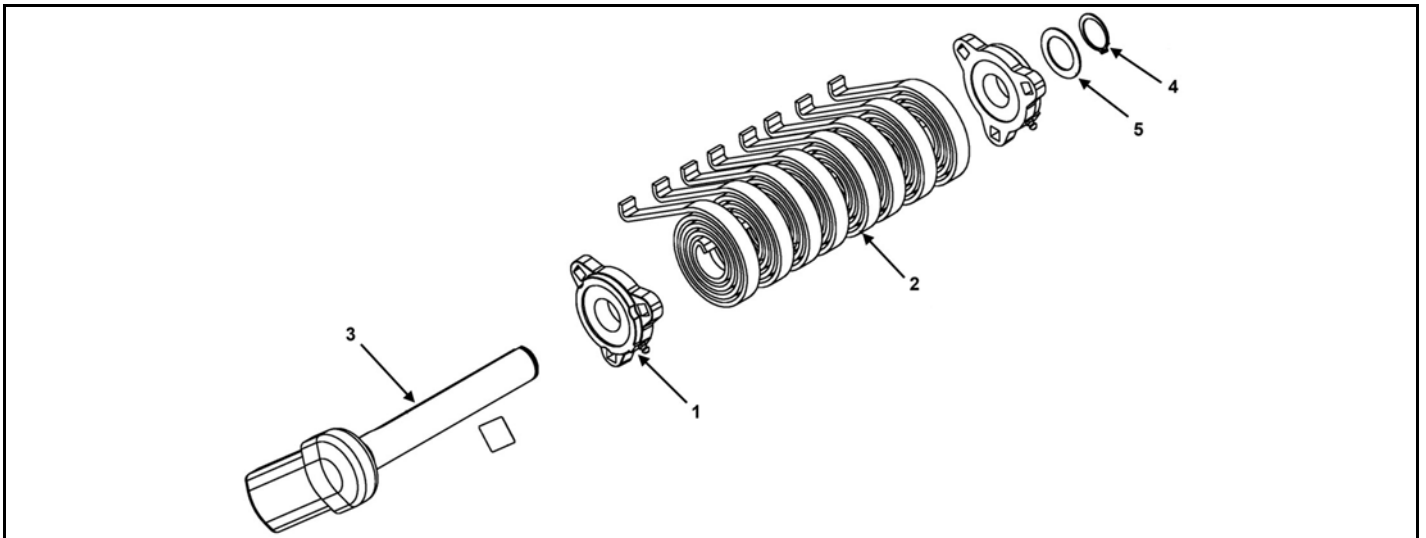
KEY	PART NUMBER	QTY	DESCRIPTION
1	100-8000-1-21	1	6-Spring Pivot Complete Assembly (Driver Side)
2	100-8000-1-22	1	6-Spring Pivot Complete Assembly (Passenger Side)
3	25-0918-1	8	Spring Pack Belt Retaining Plate
4	25-0925	1	Spring Pack Mount Bracket Weldment (Passenger Side) (RT120 & RTX220)
	25-0923	1	Spring Pack Mount Bracket Weldment (Passenger Side) (RT122 & RTX222)
	25-0928	1	Spring Pack Mount Bracket Weldment (Passenger Side) (RT124 & RTX224)
5	25-0924	1	Spring Pack Mount Bracket Weldment (Driver Side) (RT120 & RTX220)
	25-0922	1	Spring Pack Mount Bracket Weldment (Driver Side) (RT122 & RTX222)
	25-0927	1	Spring Pack Mount Bracket Weldment (Driver Side) (RT124 & RTX224)
6	100-8000-1-9-5	16	Poly T-Bushing
7	100-8000-1-2-12	12	Torsion Spring
NS	49-0322	2	Spring Pack Belt Cover
NS	100-8000-1-3-4	2	30 Degree Flat Bow Elbow
NS	100-8000-1-2-2	2	Side Arm - 96" Pivot Tube With Set Screw (RT120/122 & RTX220/222)
NS	100-8000-1-21-1	2	Side Arm - 120" Pivot Tube With Set Screw (RT124 & RTX224)

8-SPRING PIVOT (DRIVER SIDE)



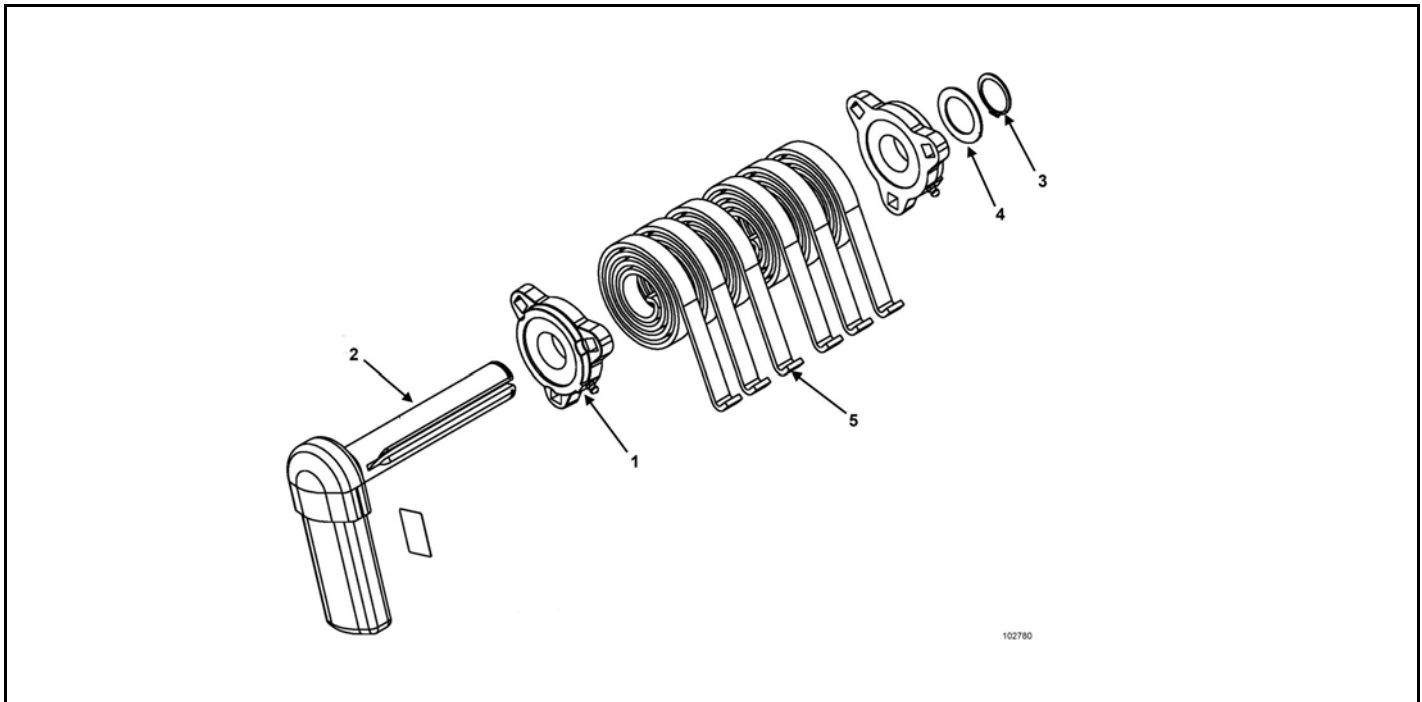
KEY	PART NUMBER	QTY	DESCRIPTION
0	100-8008-3-1-3-2	1	8-Spring Pivot (Driver Side)
1	100-8000-1-2-8	2	Bearing, Carrier Under Body Flanged
2	100-8008-3-1-1	1	Pivot Pin For 8-Spring Roller Bearing Pivot (Driver Side - No Snap Ring or Decal)
3	100-8000-1-2-9	1	Snap Ring, 1-1/4" External For Pivot Pin
4	808-1.25-1.88-18	1	1-1/4" Machinery Bushing For Pivot Pin
5	100-8000-1-2-12	8	Spring, Spiral Torsion 1-1/4"

8-SPRING PIVOT (PASSENGER SIDE)



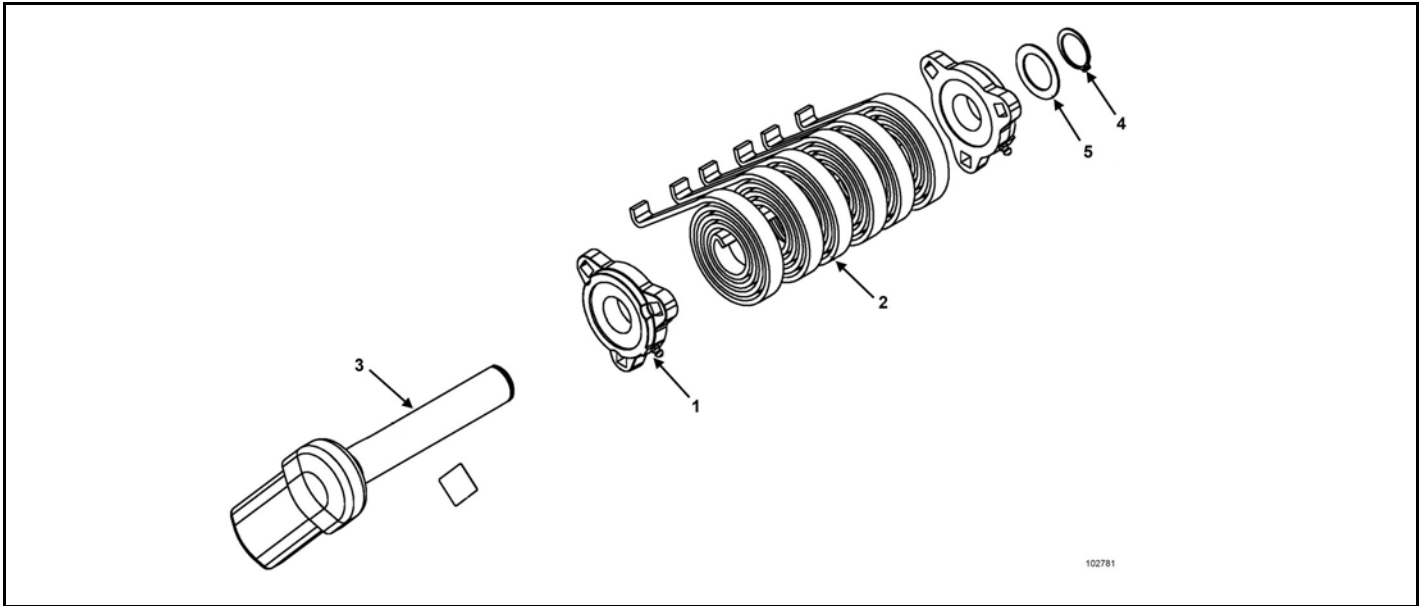
KEY	PART NUMBER	QTY	DESCRIPTION
0	100-8008-3-1-4-2	1	8-Spring Pivot (Passenger Side)
1	100-8000-1-2-8	2	Bearing, Carrier Under Body Flanged
2	100-8000-1-2-12	8	Spring, Spiral Torsion 1-1/4"
3	100-8008-3-1-2	1	Pivot Pin For 8-Spring Roller Bearing Pivot (Passenger Side - No Snap Ring or Decal)
4	100-8000-1-2-9	1	Snap Ring, 1-1/4" External For Pivot Pin
5	808-1.25-1.88-18	1	1-1/4" Machinery Bushing For Pivot Pin

5 & 6-SPRING PIVOT (DRIVER SIDE)



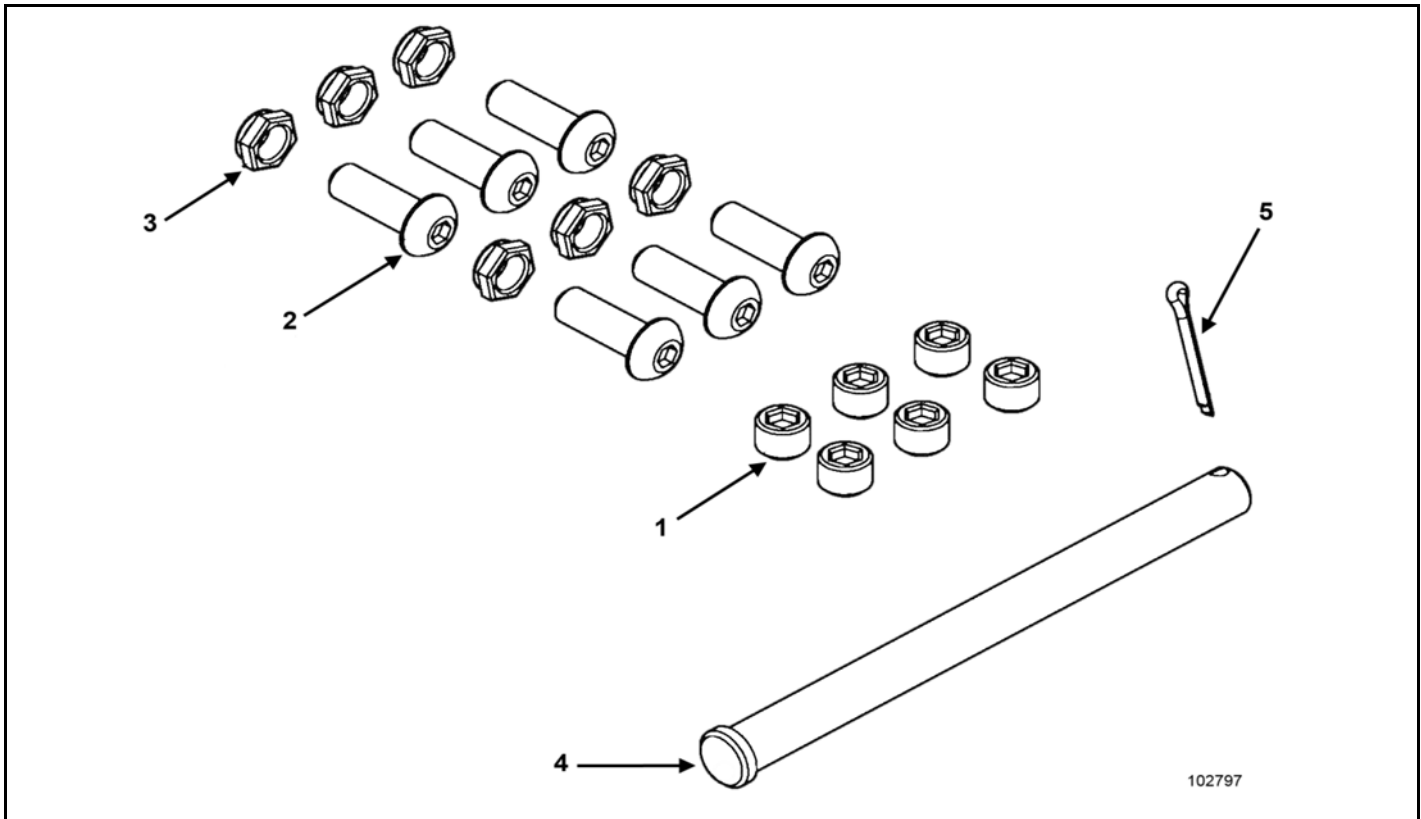
KEY	PART NUMBER	QTY	DESCRIPTION
0	100-8000-1-20-1-3	1	6-Spring Pivot (Driver Side)
	100-8000-1-2-11-1	1	5-Spring Pivot (Driver Side)
1	100-8000-1-2-8	2	Carrier Under Body Flanged Bearing
2	100-8000-1-2-5	1	Pivot Pin For 5 & 6-Spring Roller Bearing (Driver Side)
3	100-8000-1-2-9	1	Snap Ring, 1-1/4" External For Pivot Pin
4	808-1.25-1.88-18	1	Pivot 1-1/4" Machinery Bushing For Pivot Pin
5	100-8000-1-2-12	5/6	Spring, Spiral Torsion 1-1/4"

5 & 6-SPRING PIVOT (PASSENGER SIDE)



KEY	PART NUMBER	QTY	DESCRIPTION
0	100-8000-1-20-22	1	6-Spring Pivot (Passenger Side)
	100-8000-1-2-10-1	1	5-Spring Pivot (Passenger Side)
1	100-8000-1-2-8	2	Carrier Under Body Flanged Bearing
2	100-8000-1-2-12	5/6	Spring, Spiral Torsion 1-1/4"
3	100-8000-1-2-6	1	Pivot Pin For 5 & 6 Spring Roller Bearing (Passenger Side)
4	100-8000-1-2-9	1	Snap Ring, 1-1/4" External For Pivot Pin
5	808-1.25-1.88-18	1	1-1/4" Machinery Bushing For Pivot Pin

SPRING PACK BOLT ASSEMBLY



102797

KEY	PART NUMBER	QTY	DESCRIPTION
0	100-8008-3-1-3-3	1	Bolt kit For 8-Spring Pivot
	100-8000-1-2-11-2	1	Bolt Kit For 5/6 Spring Pivot
1	100-8000-1-2-16	6	1/2" x 3/8" Set Screw
2	802P-3816-1.25Z	6	3/8"-16 x 1-1/4" Button Head Bolt
3	815-3816-Z	6	3/8" Nylon Lock Nut
4	100-8000-1-2-13	1	1/2" x 5-1/4" Clevis Pin (5/6-Spring)
	100-8000-1-2-14	1	1/2" x 6-1/2" Clevis Pin (8-Spring)
5	823-.125-1.25Z	1	1/8" Cotter Pin

KNIT TARPS

MODEL	DESCRIPTION	PART NO.
3118	88" x 20'	100-8001-2
4118	88" x 20'	100-8001-2
4120/RT120	88" x 22'	100-8001-3
4122/RT122	88" x 24'	100-8001-8
4124/RT124	88" x 26'	100-8001-7
4218	88" x 22'	100-8001-3
4220	88" x 24'	100-8001-8
4222	88" x 26'	100-8001-7
RTX220	88" x 24'	100-8001-8
RTX222	88" x 26'	100-8001-7
RTX224	88" x 28'	100-8001-10
RTX226	88" x 30'	100-8001-14
6220	88" x 24'	100-8001-8
6222	88" x 26'	100-8001-7
6224	88" x 28'	100-8001-10
8118	95" x 20'	100-8001-6
8120	95" x 24'	100-8001-1
8122	95" x 24'	100-8001-1
8124	95" x 26'	100-8001-11
8126	95" x 28'	100-8001-5
8222	95" x 28'	100-8001-5
8224	95" x 31'	100-8008-1-3
9124	95" x 26'	100-8001-11
9126	95" x 28'	100-8001-5
9128	95" x 31'	100-8008-1-3
9130	95" x 33'	100-8008-1-4
9132	95" x 35'	100-8008-1-2
9136	95" x 39'	100-8008-1-5
9140	95" x 42'	100-8008-1-6
7500	82" x 18'	100-8001-13
8720	95" x 20'	100-8001-6





**Manufactured by:
Meyer Manufacturing
Corporation**

674 W. Business Cty Rd A

Dorchester, WI 54425

Phone. 1-800-325-9103

Fax: 715-654-5513

Email: parts@meyermfg.com

Website: www.meyermfg.com