

RT / RTX SERIES

FRONT UNLOAD

RT616 • RT618 • RT620 • RT622 / RTX620 • RTX622 • RTX624 • RTX626



2015 MODEL YEAR AND LATER

Parts Book

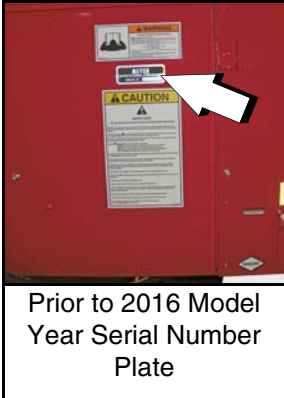


IMPORTANT INFORMATION

Prior to 2016 model year, the serial number plate is located to the right of the control handles as well as stamped above the discharge opening on the unit discharge end frame.

For 2016 model year and later, the serial number plate is located above the discharge opening on the unit discharge end frame.

Please enter the model, serial number and additional information in the space provided for future reference.



Model No. _____
Serial No. _____
Date of Purchase _____
Dealership _____
Dealership Phone No. _____



Always use your serial number when requesting information or when ordering parts.

HOW TO READ YOUR SERIAL NUMBER



EXAMPLE: 15R6201

Model Year / TSS / Model / Sequence Of Build

↓ ↓ ↓ ↓
15 R 6 201

Meyer Manufacturing Corporation
674 W. Business Cty Rd A
Dorchester, WI 54425
Phone: 1-800-325-9103
Fax: 715-654-5513
Email: sales@meyermfg.com
Website: www.meyermfg.com



TABLE OF CONTENTS

IMPORTANT INFORMATION	2
REPLACEMENT PARTS	5
Shutoff & Lockout Power Recommendations	5
MANUFACTURER'S WARRANTY	7
RT / RTX SERIES	9
UNIT FRAME	10
CROSS CONVEYOR	12
VARIABLE SPEED CLUSTER DRIVE	14
SHIFTER CONTROLS	18
INDEPENDENT OUTFEED CLUTCH DRIVE	20
INDEPENDENT OUTFEED CLUTCH	22
AUGERS AND AUGER DRIVE	24
MAIN APRON DRIVE SYSTEM	26
MAIN FRAME	
2015 MODEL YEAR AND LATER	28
ROOF ASSEMBLY	30
REAR STATIONARY GATE	32
HIGHWAY LIGHT PACKAGE KIT	34
AUGER GEARBOX	36
FRONT APRON GEARBOX	38
12R UNIVERSAL JOINT TELESCOPING ASSEMBLY WITH GUARD	40
STEEL STRINGER TIE DOWN KIT	42
OPTIONAL EQUIPMENT	45
RT-CE-1K, RT-CE-2K, RT-CE-3K	
24", 36", 48" CHAIN CROSS CONVEYOR EXTENSION KIT	46
HYDRAULIC FRONT DRIVE	50
HYDRAULIC FRONT DRIVE TRUCK MOUNT	51
MAINTENANCE RECORD	53



REPLACEMENT PARTS



WARNING

Before servicing this equipment, ensure that all personnel, including family members are familiar with the equipment and the safety hazards that are present, along with the safety practices that should be observed while working in this equipment.



CAUTION

Inspect the chassis' axles, o-beams, spindles, tires, hitches and all safety shielding, safety signs and safety lighting regularly. These parts if not watched closely, could pose potential injury or death. If any part is found in need of repair, follow the SHUTOFF & LOCKOUT POWER recommendations and have qualified personnel repair immediately.

Any individual that will be adjusting, servicing, maintaining, or clearing an obstruction from this machine needs to ensure that this machine stays safely "OFF" until the adjustment, service, or maintenance has been completed, or when the obstruction has been cleared, and that all guards, shields, and covers have been restored to their original position. The safety of all individuals working on or around this machine, including family members, are affected. The following procedure will be referred to throughout this manual, so be familiar with the following steps.

Shutoff & Lockout Power Recommendations

1. Think, Plan and Check

- a. **Think** through the entire procedure and identify all the steps that are required.
- b. **Plan** what personnel will be involved, what needs to be shut down, what guards / shields need to be removed, and how the equipment will be restarted.
- c. **Check** the machine over to verify all power sources and stored energy have been identified including engines, hydraulic and pneumatic systems, springs and accumulators, and suspended loads.

2. **Communicate** - Inform everyone involved, including those working on or around this machine, that work is being done which involves keeping this machine safely "OFF".

3. Power Sources

- a. **LOCKOUT** - Shut off engines and take the key, or physically lock the start/on switch or control. Disconnect any power sources which are meant to be disconnected (i.e. electrical, hydraulic, and PTO of pull-type units).
- b. **TAGOUT** - Place a tag on the machine noting the reason for the power source being tagged out and what work is being done. This is particularly important if the power source is not within your sight and/or will need to be isolated for a longer period of time.

4. **Stored Energy** - Neutralize all stored energy from its power source. Ensure that this machine is level, set the parking brake, and chock the wheels. Disconnect electricity, block moveable parts, release or block spring energy, release pressure from hydraulic and pneumatic lines, and lower suspended parts to a resting position.

5. **Test** - Do a complete test and personally double check all of the above steps to verify that all of the power sources are actually disconnected and locked out.

6. **Restore Power** - When the work has been completed, follow the same basic procedures, ensuring that all individuals working on or around this machine are safely clear of the machine before locks and tags are removed and power is restored.

IMPORTANT

It is important that everyone who works on this equipment is properly trained to help ensure that they are familiar with this procedure and that they follow the steps outlined above. This manual will remind you when to Shutoff & Lockout Power.

At times, parts on this implement will become worn or damaged. Performing repairs on this implement can pose a risk of injury including death. To reduce risk, the party that will be doing the repair should be very knowledgeable of the implement and the equipment that they will be using to do the repair.

- Review the repair so that a plan can be put together and the proper equipment can be used to repair this implement safely and correctly.
- Personal safety equipment may include items such as safety glasses, protective footwear, hearing protection, gloves, fire retardant clothes, etc.

WARNING

Crushing Hazard

Do Not work under suspended or blocked parts.



- The use of hoists and/or supports may be needed to handle heavy components.
- If the implement is being repaired in the field, make sure the parking brake of the tractor is engaged, the implement is on solid and level ground.
- Welding and torching should be done by properly trained individuals who have proven their skills.

IMPORTANT

Call the factory for any additional details you may need to perform the repair. Some parts may come with instruction sheets to assist in the repair. Instructions sheets may be provided with your parts order. Otherwise, if available, instruction sheets can be e-mailed or faxed for you convenience. Call Meyer Manufacturing Corporation toll free at 1-800-325-9103 or e-mail sales@meyermfg.com.

NOTE: Be environmentally friendly and dispose of any waste materials properly. Recycle when appropriate.

MANUFACTURER'S WARRANTY

2/2015

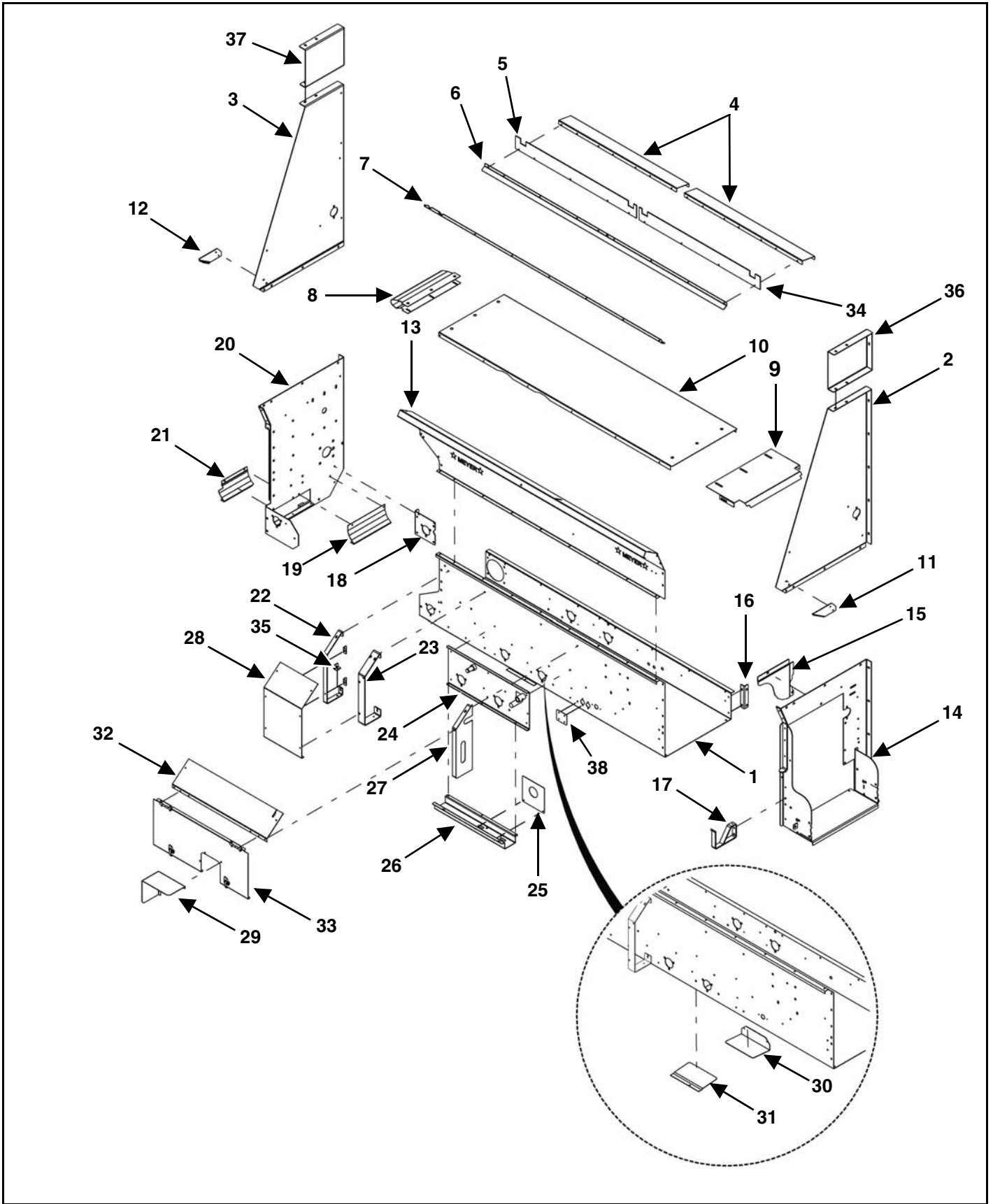
MEYER RT FORAGE BOX

- I. The "Owner's Registration Form" must be completed in full and promptly returned to Meyer Mfg. Corp. for this warranty to become both valid and effective. All warranties on new Meyer forage boxes shall apply only to the original retail customer from an authorized Meyer Mfg. Corp. dealership.
- II. This warranty shall not apply to any Meyer forage box which has been subjected to misuse, negligence, alteration, accident, incorrect operating procedures, has been used for an application not designed for or pre-authorized by Meyer in writing, has had the serial numbers altered, or which shall have been repaired with parts other than those obtained through Meyer Mfg. Corp. Meyer is not responsible for the following: Depreciation or damage caused by normal wear, lack of reasonable and proper maintenance, failure to follow the operator's manual recommendations or normal maintenance parts and service. Meyer is not responsible for rental of replacement equipment during warranty repairs, damage to a power unit (including but not limited to a truck or tractor), loss of earnings due to equipment down time, or damage to equipment while in transit to or from the factory or dealer.
- III. Meyer Mfg. Corp. warrants new Meyer forage box to be free from defects in material and workmanship under recommended use and maintenance service, as stated in the "Owner / Operator's Manual & Parts Book", as follows:
 - A. Meyer Mfg. Corp. will repair or replace F.O.B. Dorchester, WI, as Meyer Mfg. Corp. elects, any part of a new Meyer Forage Box which is defective in material or workmanship:
 - i. Without charge for either parts or labor during the first (1) year from purchase date to the original retail customer.
 - ii. Without charge for parts only during the second (2) year from purchase date to the original retail customer.
- IV. COMMERCIAL USE: Coverage as in paragraph III.A.i. ONLY, except warranty coverage is for (90) days for parts and labor to the original commercial retail customer.
- V. Repairs eligible for labor warranty must be made by Meyer Mfg. Corp. or an authorized Meyer dealership. The original retail customer is responsible for the transportation of the forage box to the dealership for warranty service or for any service call expenses.
- VI. Except as stated above, Meyer Mfg. Corp. shall not be liable for injuries or damages of any kind or nature, direct, consequential, or contingent, to persons or property. This warranty does not extend to loss of crop or for any other reasons.
- VII. No person is authorized to give any warranties or to assume any other obligation on Meyer Mfg. Corp.'s behalf unless made or assumed in writing by Meyer Mfg. Corp. This warranty is the sole and exclusive warranty which is applicable in connection with the manufacture and sale of this product and Meyer Mfg. Corp's responsibility is limited accordingly.
- VIII. Tires, optional scales and tarps fall under the original manufacturer's warranty.



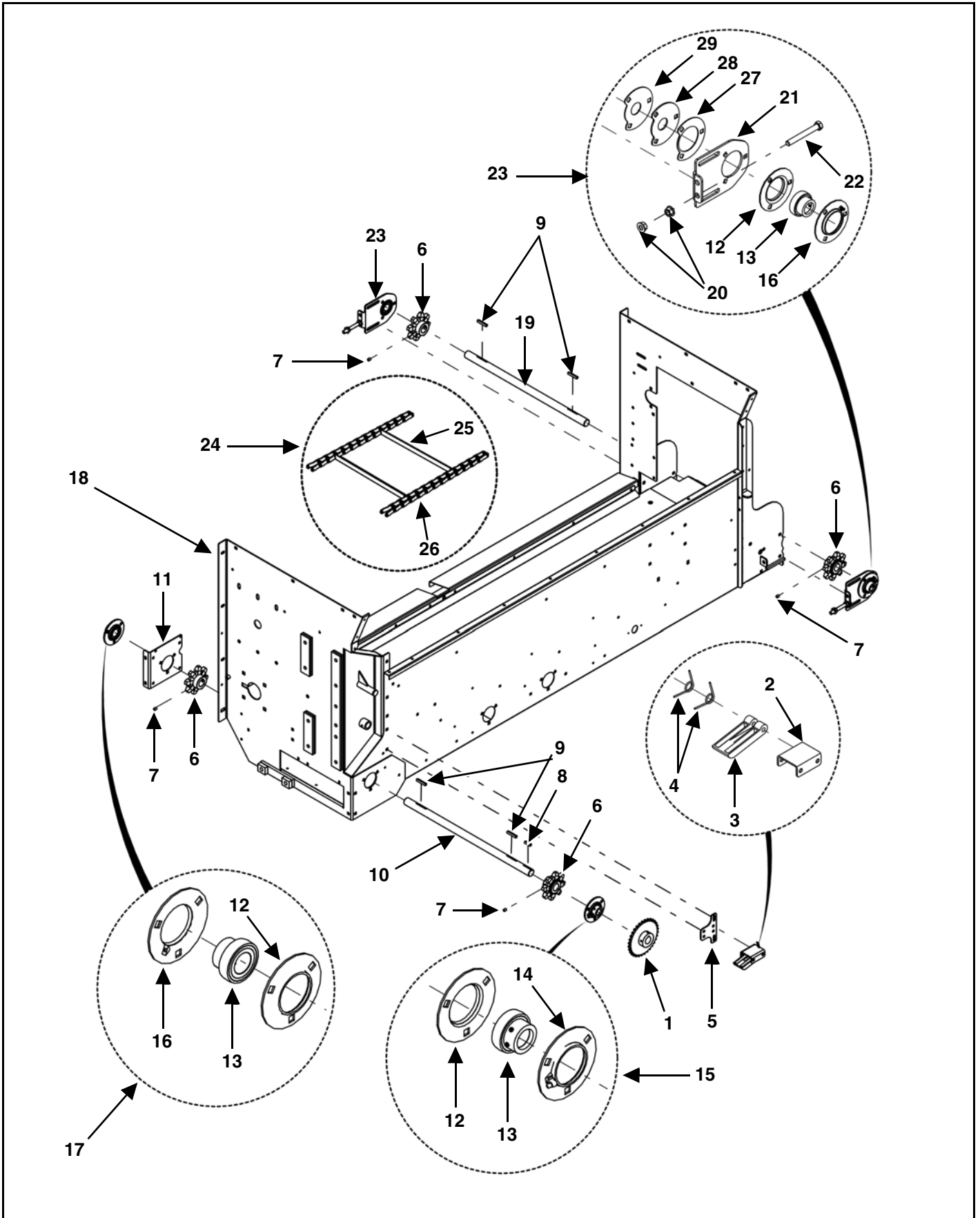


UNIT FRAME



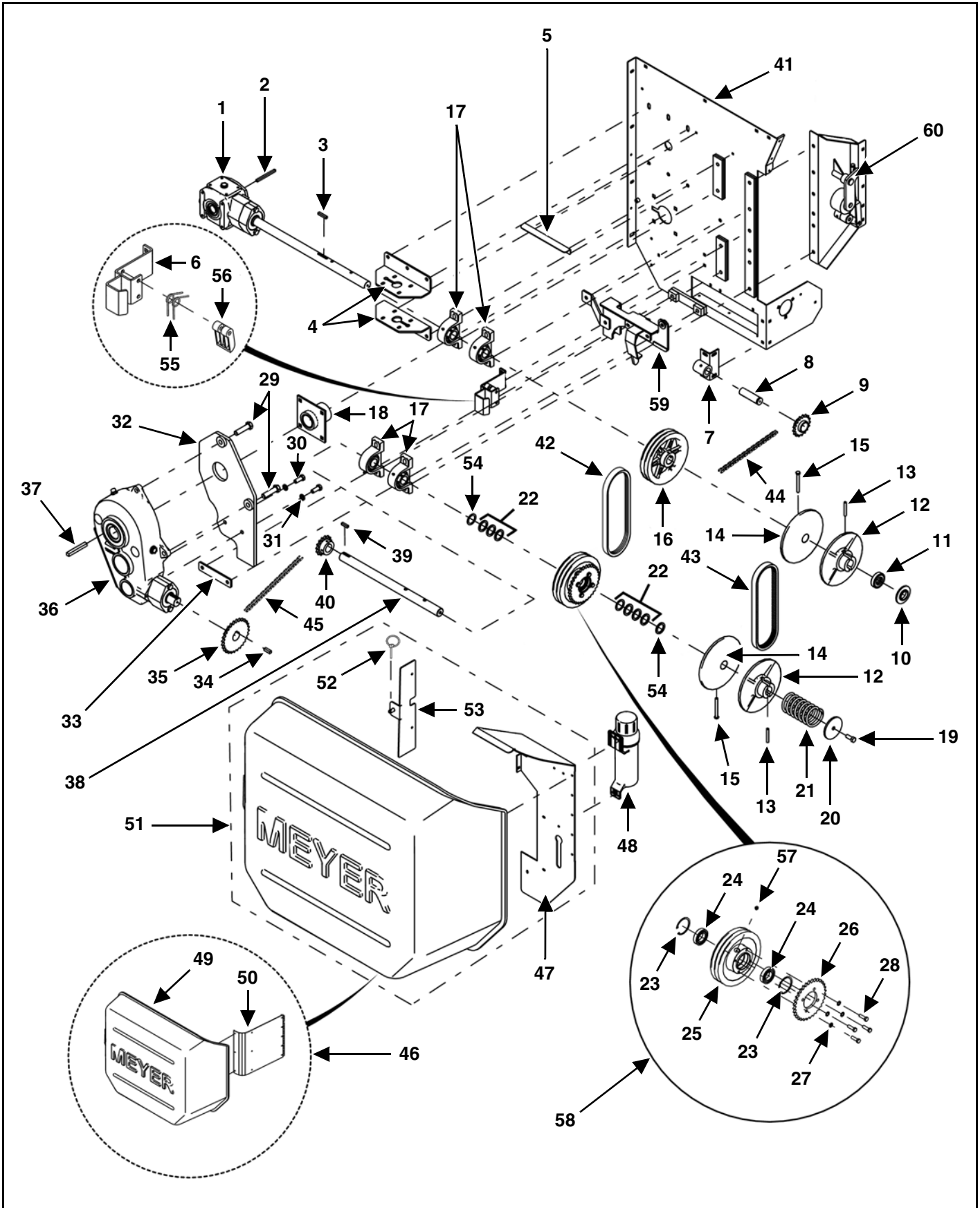
KEY	PART NUMBER	QTY	DESCRIPTION
1	27-0300-AS	1	Apron Pan
2	27-0304-AS	1	Left Upper Auger Panel Assembly (Prior to SN 15R6210)
	27-0313	1	Left Upper Auger Panel Assembly (SN 15R6210 & Later)
3	27-0305-AS	1	Right Upper Auger Panel Assembly (Prior to SN 15R6210)
	27-0314	1	Right Upper Auger Panel Assembly (SN 15R6210 & Later)
4	27-0308	2	Reverse Chain Guide Panel
5	49-0301	1	Rear Apron Pan Belt Right
6	25-0852	1	Cross Conveyor Hold Down Rear
7	25-0851	1	Cross Conveyor Hold Down Front
8	25-0531	1	Cross Conveyor Chain Idler Shaft Cap
9	24-0304	1	Left Cross Conveyor Shaft Shield
10	27-0301	1	Top Apron Pan
11	25-0516	1	Spillage Guard Gusset Left
12	25-0515	1	Spillage Guard Gusset Right
13	27-0303-RTX600C	1	Upper Spillage Guard Panel Assembly
14	39-0301	1	Left End Frame Welded Assembly
15	24-0307	1	Auger Shield
16	25-0725	1	Left Apron Pan Bracket
17	25-0006	1	PTO Hanger Bracket
18	See Page 12	1	Right Apron Pan Support Bracket
19	27-0310	1	Conveyor Chain Return
20	39-0300	1	Right End Frame Welded Assembly
21	27-0315	1	Clean-Out Door Weldment
22	24-0342	1	Front Shield Bracket Right
23	24-0340	1	Front Shield Bracket Center
24	See Page 20	1	Independent Out-Feed Clutch Main Clutch Plate Weldment
25	24-0311	1	Clutch PTO Shaft Cover
26	25-0707	1	Independent Out-Feed Clutch Bottom Bracket
27	24-0300	1	Front Shield End Cap Weldment
28	24-0302	1	Right Front Shield Assembly
29	24-0310	1	PTO Shield Left Hand Assembly
30	24-0315	1	Cross Conveyor Access Cover Rear
31	24-0314	1	Cross Conveyor Access Cover Front
32	24-0343-1	1	Front Shield Top
33	24-0339	1	Front Shield Assembly With Door Latches
	32-0001-1	2	Door Latch
	24-0339-2	2	Front Shield Hinge
34	49-0300	1	Rear Apron Pan Belt Left
35	25-0711	3	Front Shield Mount Inner Bracket
36	27-0306	1	Left Auger Extension Plate (High Side Box)
37	27-0307	1	Right Auger Extension Plate (High Side Box)
38	24-0363	1	Hydraulic Extension Cover Plate

CROSS CONVEYOR



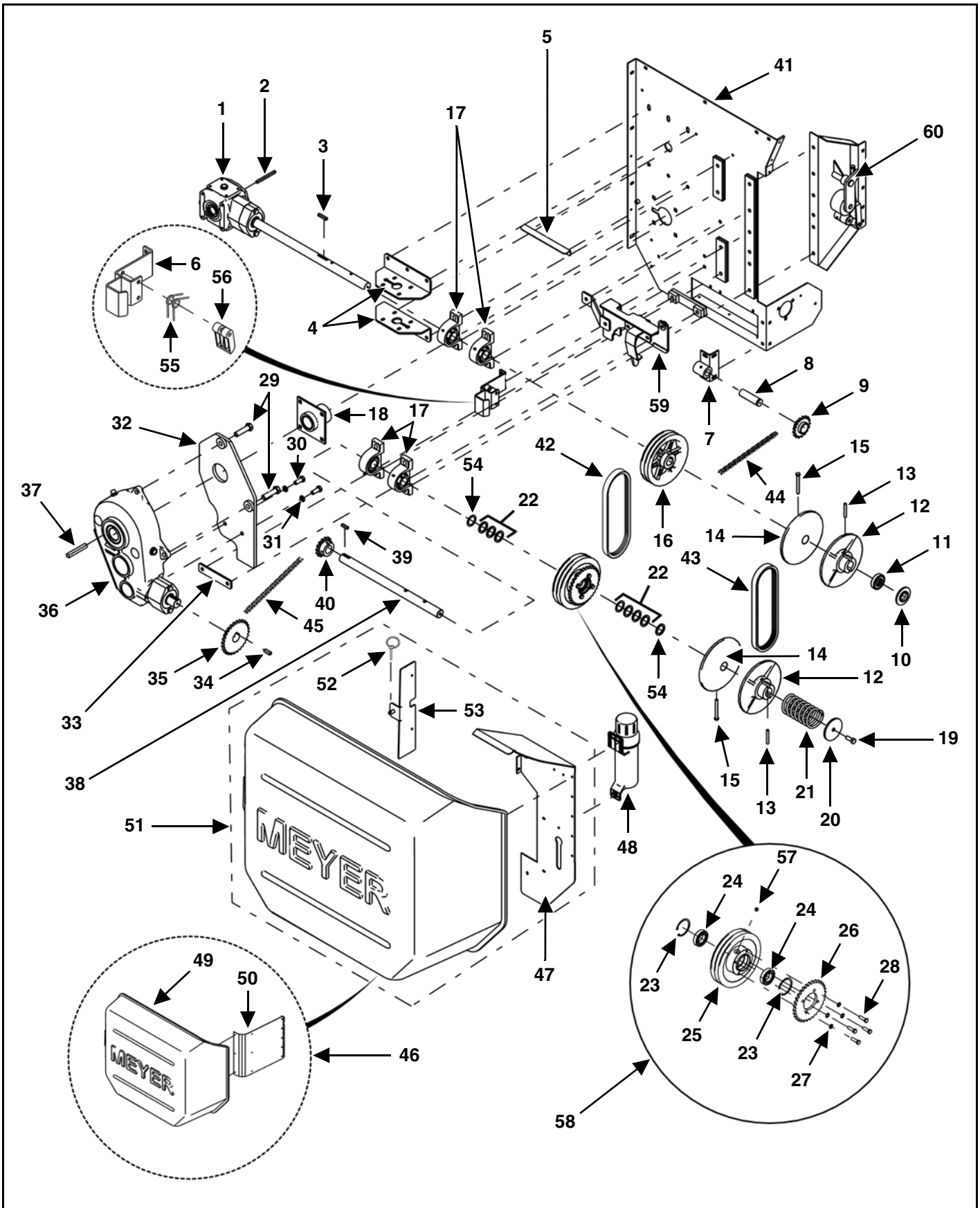
KEY	PART NUMBER	QTY	DESCRIPTION
1	110-50B32-1.25-1	1	50B32 1-1/4" Bore, 5/16" Keyway Sprocket With 2-5/16" Setscrews
2	25-0047	1	Auger Chain Tightener Bracket
3	41-0001	1	5" Nylon Slide Chain Tightener Paddle
4	29-0002	2	Torsion Spring Chain Tightener Spring
5	25-0709	1	Independent Out-feed Clutch Chain Tightener Mount Bracket
6	110-662B8-1.25-1	4	8 Tooth 1.664" Pitch 662 Sprocket 1.25" ID x 0.3125" Key
7	827-3816-.5	4	3/8"-16 x 1/2" Set Screw Knurled Point
8	35-0030-H	1	5/16" x 5/16" x 1-1/4" Through Hardened
9	135-3131-2-1	4	5/16" x 5/16" x 2" Square Key With Square Ends
10	23-0309	1	Right Cross Conveyor Drive Shaft
11	25-0724	1	Right Apron Pan Support Bracket
12	14-0312-1	4	1-1/4" Re-Lube Plain Round Flange
13	14-0002-3G	4	1-1/4" Bearing With Lock Collar Greasable
14	14-0313-1	1	1-1/4" Re-Lube Plain Flange, 90 Degree Threaded Zerk
15	14-0313	1	1-1/4" Bearing Assembly, 3-Hole Re-Lube RD Flanges, 90 Degree Zerk
16	14-0002-2G	3	1-1/4" Re-Lube Plain Flange, Straight Press-in Zerk
17	14-0312	3	1-1/4" Bearing Assembly, 3-Hole Re-Lube Flanges, Straight Zerk
18	See Page 10	1	Apron Pan
19	23-0303	1	Left Cross Conveyor Idler Shaft
20	810-5013-Z	4	1/2" Spin Lock Nut
21	25-0712-1	2	Tightener Bearing Bracket
22	830-5013-4Z	2	1/2"-13 x 4" Tap Bolt Grade 5 Zinc Fully Threaded
23	14-0304	2	Tightener Bearing Assembly
24	11-0286-1-D	1	Regular Pintle Chain Assembly Complete
	11-0286-D	1	Extension Pintle Chain Assembly Complete For 1' Extension (Additional Lengths See Page 46)
25	11-0281-2-1-D	1	Cross Apron Slat With Attachments
26	11-0006-1	AR	Link, Pintle Chain (With Two Pins & Cotter Pins)
27	14-0315	2	Inside Bearing Seal Plate
28	14-0316	2	Bearing Plastic Seal
29	14-0317	2	Outside Bearing Seal Plate

VARIABLE SPEED CLUSTER DRIVE



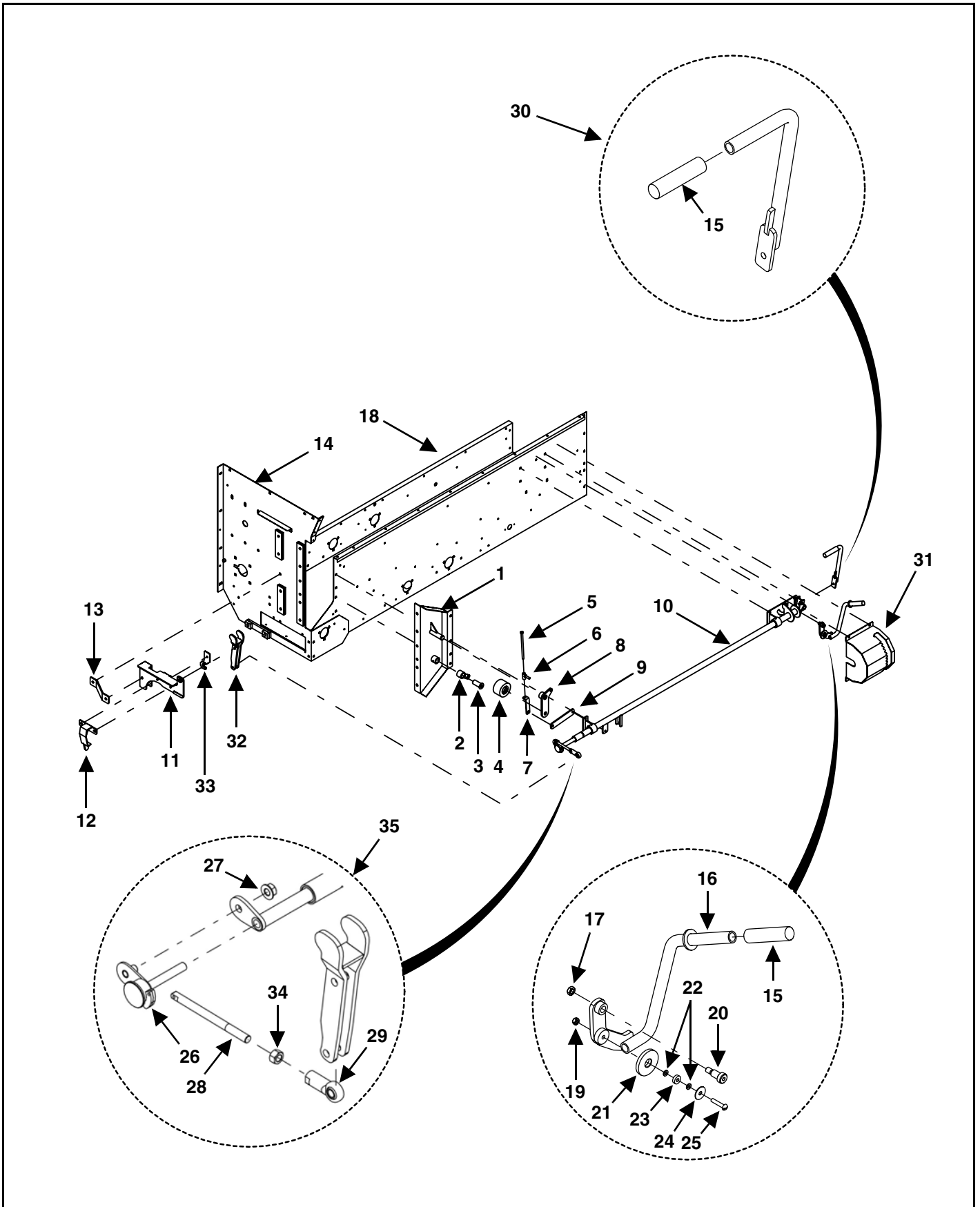
KEY	PART NUMBER	QTY	DESCRIPTION
1	19-0207	1	3.1:1 Berma Next Generation Auger Gearbox 1-1/4" Bore, 5/16" Keyway
2	135-3131-4-1	1	5/16" x 5/16" x 4" Square Key With Square Ends
3	135-3131-1.75-1	1	5/16" x 5/16" x 1-3/4" Square Key With Square Ends
4	25-0715	2	Gearbox Mount Bracket
5	25-0855	1	Plastic Shield Top Support Bracket
6	25-0856	1	Chain Tightener Bracket Weldment
7	25-0160	1	Front Idler Bracket Assembly Less Shaft
8	23-0044	1	Front Chain Idler Shaft 1-1/8" x 4" C1045 Hardened
9	10-0061	1	Idler Sprocket With Needle Bearing Assembly
10	33-0300	1	Thrust Bearing Washer 1.390" ID x 3.000" OD x 0.375"
11	14-0302	1	1-3/8" Thrust Bearing Shielded
12	12-0037	2	Variable Sheave Half Sliding
13	38-0019	2	3/8" x 2-1/2" Long Coiled Spring Pin
14	12-0038	2	Variable Sheave Half Fixed
15	881-3816-3.5Z	2	3/8"-16 x 3-1/2" Hex Head Cap Screw Grade 8
16	12-0029	1	8.75" Double Pulley, 1-3/8" Bore, 5/16" Keyway
17	914-3801	4	1-3/8" Pillow Block Bearing With Setscrew Lock
18	14-0309	1	Front Apron Bearing Welded Assembly
19	851-5013-1.25Z	1	1/2"-13 x 1-1/4" Grade 5 Machine Bolt Zinc
20	33-0304	1	Variable Speed Spring Washer Weldment
21	29-0027	1	Next Generation Variable Speed Spring
22	808-1.38-1.87-10	7	1.38" ID x 1.87" OD x 0.135" Machine Bushing
23	33-0302	2	2-1/2" Internal Snap Ring 0.078" Thick
24	14-0305	2	1-3/8" Shield Steel Bearing 2-1/2" Outside Diameter
25	12-0036-1	1	Idler Pulley
	30-0003	1	1/4"-28 45 Degree Grease Fitting
26	110-50A32-2.75-1	1	50A32 Sprocket 2.752" Bore
27	806-0038-Z	4	3/8" Internal Tooth Lock Washer Zinc
28	851-3816-1.25Z	4	3/8-16 x 1-1/4" Machine Bolt Zinc
29	851-M18-2.5-70-Z	2	M18-2.5 x 70MM Metric Hex Head Machine Bolt
30	851-M14-2.0-35-Z	2	M14-2.0-35MM Metric Hex Head Machine Bolt
31	822-M14-Z	2	M14 Split Lock Washer
32	25-0781	1	Torque Arm Weldment
33	39-0300-12	1	Torque Arm Retainer
34	35-0006	1	3/8" x 3/8" x 1-1/4" Square Key (Prior to SN 18R6253)
35	110-50B28-1.50-1	1	50B28 1-1/2" Bore Sprocket, 3/8" Keyway With Two 3/8" Setscrews (Prior to SN 18R6253)
	110-50B28-1.38-3	1	50B28 1-1/2" Bore Sprocket, Splined With Two 3/8" Setscrews (SN 18R6253 & Later)
36	19-0212	1	31.4:1 Berma Next Generation Apron Gearbox 2" Bore, 1/2" Keyway
37	135-5050-4-1	1	1/2" x 1/2" x 4" Square Machine Key With Square Ends
38	23-0301	1	Idler Shaft

VARIABLE SPEED CLUSTER DRIVE (CONT'D)



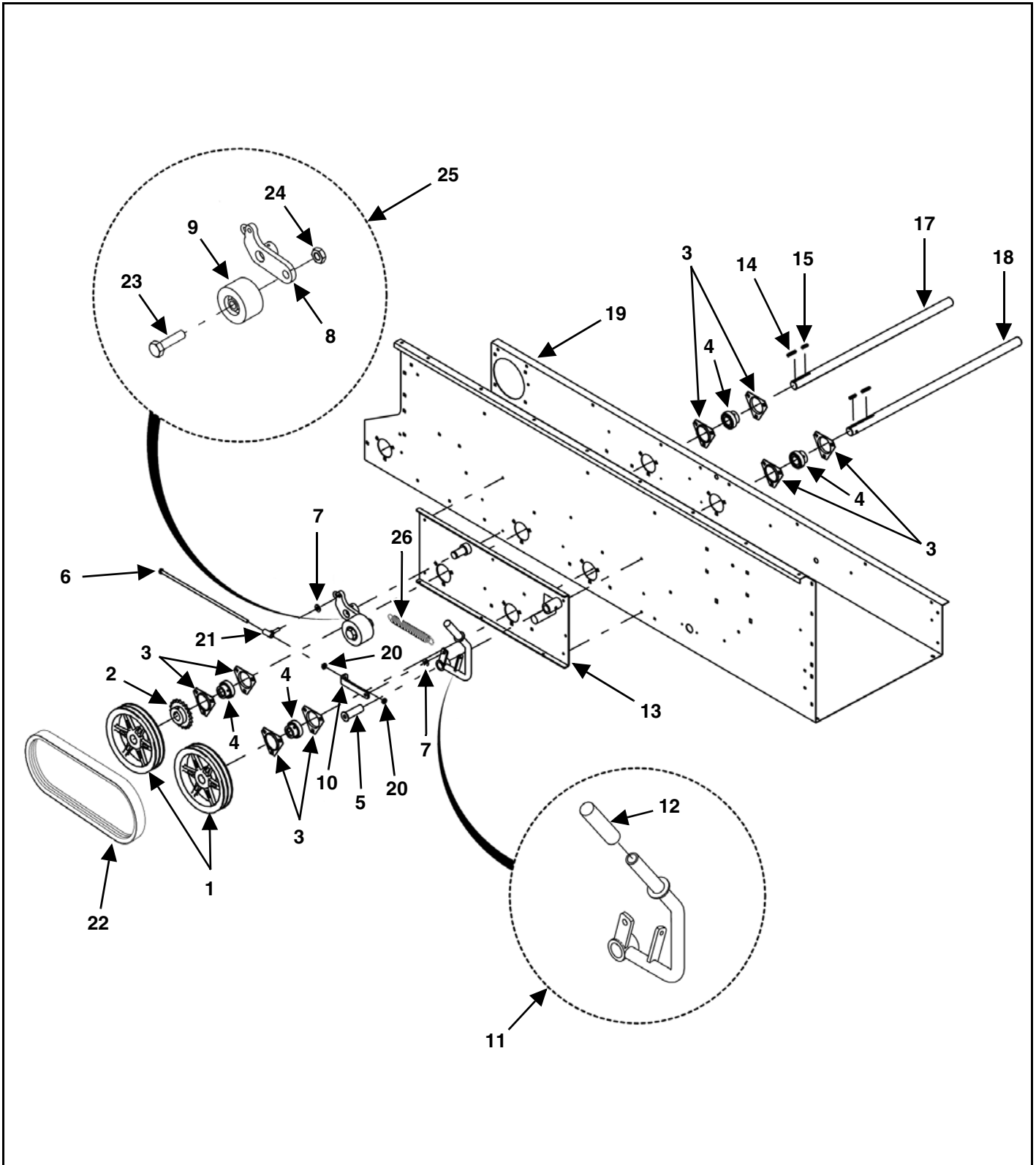
KEY	PART NUMBER	QTY	DESCRIPTION
39	35-0030-H	1	5/16" x 5/16" x 1-1/4" Through Hardened Key
40	110-50B15-1.38-1	1	50B15 1-3/8" Bore, 5/16" Keyway Sprocket, With Two 5/16" Setscrews
41	See Page 10	1	Right Hand End Frame
42	49-0175	1	Double V-Belt
43	49-0314	1	Variable Speed Belt
44	111-0050-155	1	#50-155 Link Roller Chain Including Connector and Offset
45	11-0003	1	#50-47 Link Roller Chain Including Connector and Offset
46	24-0350	1	Plastic Shield Assembly With Hinge And Support Piece Left Hand Discharge
47	25-0710	1	Shield Mount Plate
48	33-0044	1	Manual Holder With Drilled Vent Hole
49	24-0350-1	1	Gearbox Plastic Shield Left Hand Discharge
50	24-0350-3	1	Plastic Shield Support Piece With Hinge
	24-0112-2	1	Plastic Cluster Door Hinge
51	24-0350-K	1	Plastic Shield Kit With Mount, Support Bracket With Hinge, And Filler Bracket
52	823-0003	1	Lynch Pin
53	25-0758	1	Gearbox Shield Filler Bracket
54	808-1.38-1.87-16	2	1.38" ID x 1.87" OD x 0.060" Machine Bushing
55	29-0002	2	Torsion Spring Chain Tightener Spring
56	41-0002	1	3" Nylon Slide Chain Tightener Paddle
57	30-0003	1	1/4"-28 45 Degree Grease Fitting
58	12-0036	1	Idler Pulley Assembly Complete With Bearings, Sprocket, And Fasteners
59	See Page 18	1	Variable Speed Control Arm Mount Bracket Weldment
60	See Page 18	1	Independent Out-Feed Clutch Tightener Arm Weldment

SHIFTER CONTROLS



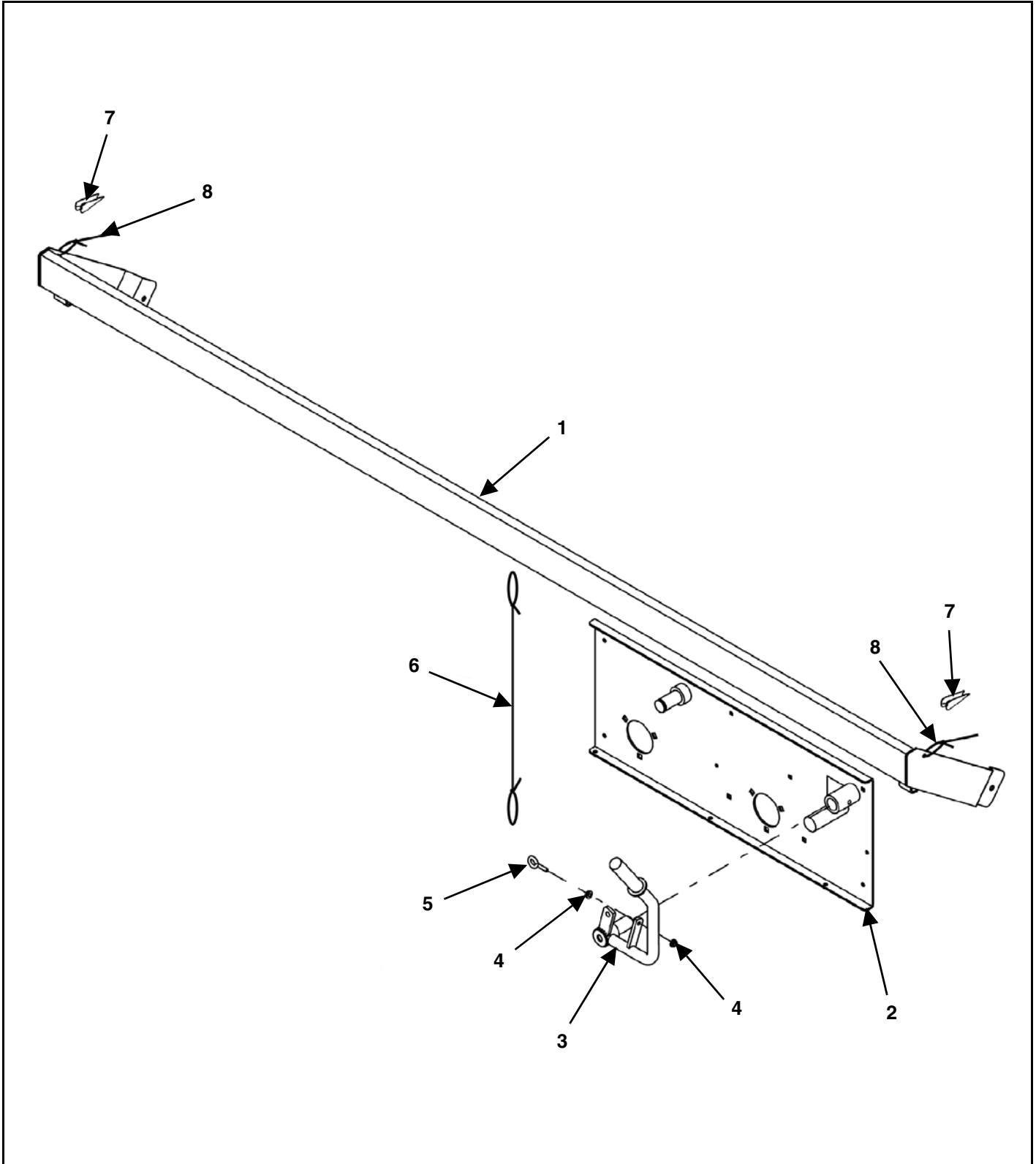
KEY	PART NUMBER	QTY	DESCRIPTION
1	25-0701	1	Independent Outfeed Clutch Variable Mount Brake Weldment
2	16-0303	1	Independent Outfeed Clutch Pivot Sleeve Linkage Arm Welded Assembly
3	25-0702	1	Independent Outfeed Clutch Pivot Sleeve Pin Weldment
4	912-0002-1	1	2" Snugulator
5	801-3816-7.5	1	3/8-16 x 7-1/2" Hex Bolt Grade A
6	16-0041	1	Independent Outfeed Clutch Linkage Pivot Sleeve Weldment
7	16-0306	1	Independent Outfeed Clutch Tightener Arm Linkage
8	16-0302	1	Independent Outfeed Clutch Tightener Arm Weldment
9	16-0300-9	1	Independent Outfeed Clutch Tightener Arm Linkage
10	16-0300	1	Speed Control Welded Assembly
11	25-0704	1	Variable Speed Control Arm Mount Bracket Weldment
12	25-0805	1	Belt Deflector Welded Assembly
13	25-0704-3	1	Variable Speed Control Arm Mount Plate Brace
14	See Page 10	1	Right Hand End Frame
15	51-0003	2	7/8" ID Rubber Grip
16	16-0314	1	Independent Outfeed Clutch Handle Weldment With Grip
17	826-3816-Z	1	3/8-16 Jam Nut Zinc
18	See Page 10	1	Apron Pan
19	814-2520-Z	1	1/4-20 Indented Locknut Zinc
20	834-.50-.75-SS	1	1/2" Shoulder x 3/4" x 3/8-16 Socket Shoulder Bolt, Stainless Steel, 5/8" Long Thread
21	16-0304-6	1	Shifter Roller
22	805-M6Z	2	M6 Flat Washer Zinc Plated
23	14-0311	1	0.250" ID x 0.625" OD 1 Row Double Shield Radial Ball Bearing
24	804-0025-Z	1	1/4" Fender Washer, Zinc
25	802-2520-1.25Z	1	1/4-20 x 1-1/4" Stove Bolt Zinc
26	25-0921	1	Variable Control Weldment
27	810-5013-Z	1	1/2" Spin Lock Nut
28	42-0021-1	1	Fine Threaded Spade Bolt
	11-0090	1	#40-5 Link Roller Chain Link Each End
	11-0047	2	#40 Connector Roller Link
29	16-0027	1	1/2" Swivel Eyelet
30	16-0316	1	Variable Handle Weldment
31	25-0706	1	Speed Control Handle Selector Bracket Weldment
32	25-0703	1	Control Arm Bracket Weldment
	851-5013-2Z	1	1/2"-13 x 2" Machine Bolt
	814-5013-Z	1	1/2"-13 Indented Lock Nut
33	25-0736	1	Control Rod Bearing Mount Welded Assembly
34	813-5020-Z	1	1/2"-20 Nut Fine Thread
35	RT-VC-KIT	1	Variable Control Kit Chain Linkage Update (Prior to SN 16R6231)

INDEPENDENT OUTFEED CLUTCH DRIVE



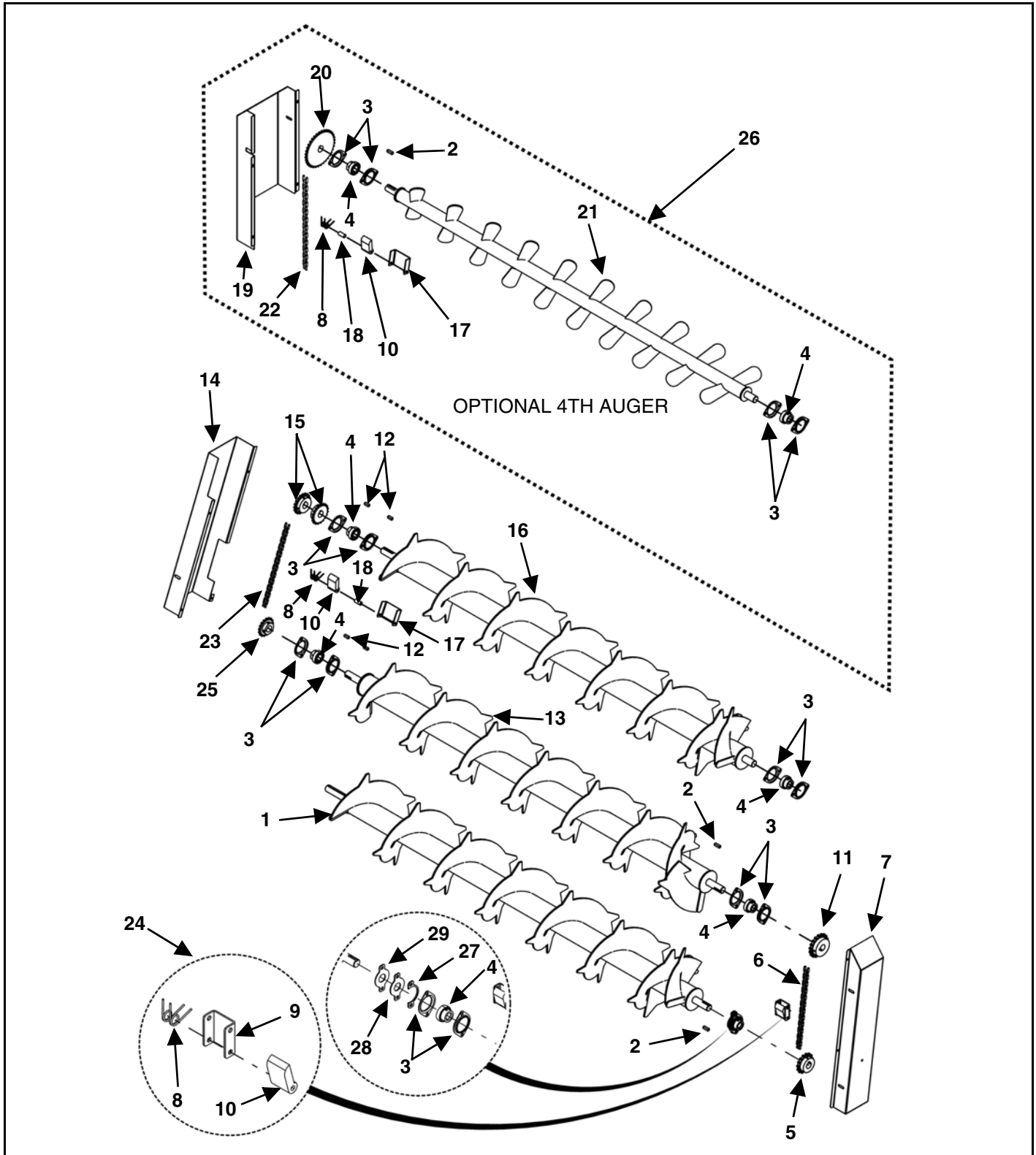
KEY	PART NUMBER	QTY	DESCRIPTION
1	12-0028	2	9.75" Double Pulley 1-1/4" Bore 1/4" Keyway
2	110-50B20-1.25-1	1	50B20 1-1/4" Bore, 1/4" Keyway Sprocket, With Two 5/16" Setscrews
3	14-0002-2	8	1-1/4" Bearing Flange
4	14-0002-3	4	1-1/4" Bearing With Lock Collar
5	25-0279	1	Independent Out-Feed Clutch Handle Pivot Shaft Weldment
6	801-3816-17	1	3/8-16 x 17" Hex Cap Screw
7	805-0038-Z	2	3/8" Flat Washer Zinc
8	25-0260-4	1	Clutch Tightener Arm Weldment
9	912-0002-1	1	2" Snugulator
10	25-0268-1	1	Independent Outfeed Clutch Linkage Extension
11	16-0313	1	Independent Outfeed Clutch Shifting Handle Weldment With Grip
12	51-0003	1	7/8" ID Rubber Grip
13	25-0700	1	Independent Outfeed Clutch Main Clutch Plate Weldment
14	35-0012	2	1/4" x 1/4" x 1-1/2" Square Key
15	135-2525-1-1	1	1/4" x 1/4" x 1" Square Machine Key With Square Ends
16	35-0001	1	1/4" x 1/4" x 1-1/8" Square Key
17	23-0307	1	Independent Outfeed Clutch Idler Shaft
18	23-0306	1	Independent Outfeed Clutch Center Drive Shaft
19	See Page 10	1	Apron Pan
20	813-3816-Z	2	3/8"-16 Nut Zinc
21	16-0041	1	Independent Outfeed Clutch Linkage Pivot Sleeve Weldment
22	49-0175	1	Double V-Belt
23	851-7510-3Z	1	3/4"-10 x 3" Grade 5 Machine Bolt
24	933-3621	1	3/4"-10 Jam Nut
25	25-0260	1	Clutch Tightener Assembly
26	29-0005	1	Extension Spring

INDEPENDENT OUTFEED CLUTCH



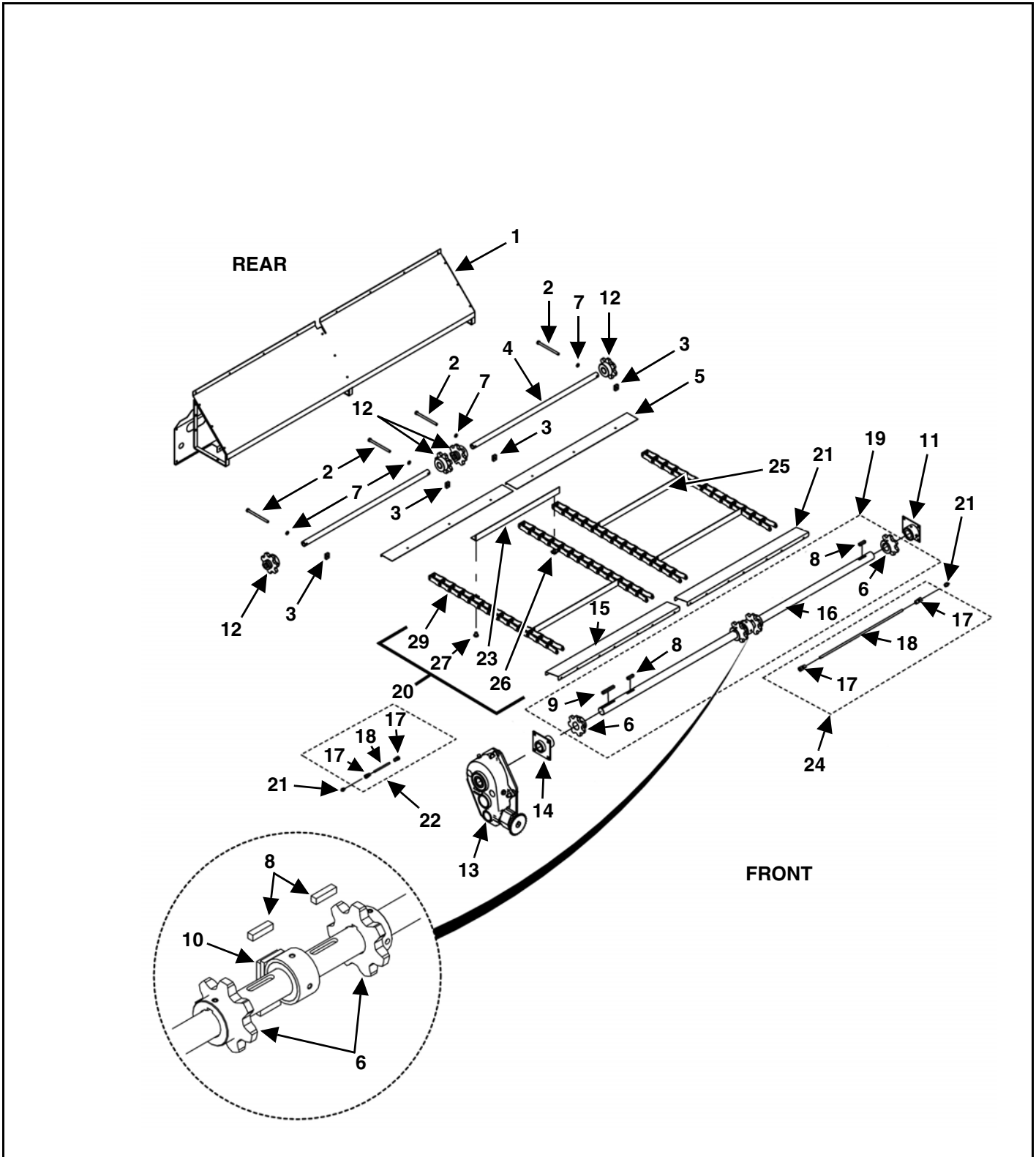
KEY	PART NUMBER	QTY	DESCRIPTION
1	16-0305	1	Emergency Stop Control Bar Welded Assembly
2	See Page 20	1	Independent Outfeed Clutch Main Clutch Plate Weldment
3	See Page 20	1	Independent Outfeed Clutch Shifting Handle Weldment With Grip
4	810-2520-Z	2	1/4" Spin Lock Nut
5	811-2520-1Z	1	1/4"-20 x 1" Eyebolt Zinc 2" Overall / 1" Shank
6	36-0002	1	Emergency Stop Front Cable With Clamps
7	33-0048	2	3/32" Thimble
8	36-0006	20	3/32" Uncoated Cable (RT/RTX216) (Per Foot Per Side)
		22	3/32" Uncoated Cable (RT/RTX218) (Per Foot Per Side)
		24	3/32" Uncoated Cable (RT/RTX220) (Per Foot Per Side)
		26	3/32" Uncoated Cable (RT/RTX222) (Per Foot Per Side)
	36-0007	4	3/32" Aluminum Crimp Clamp

AUGERS AND AUGER DRIVE



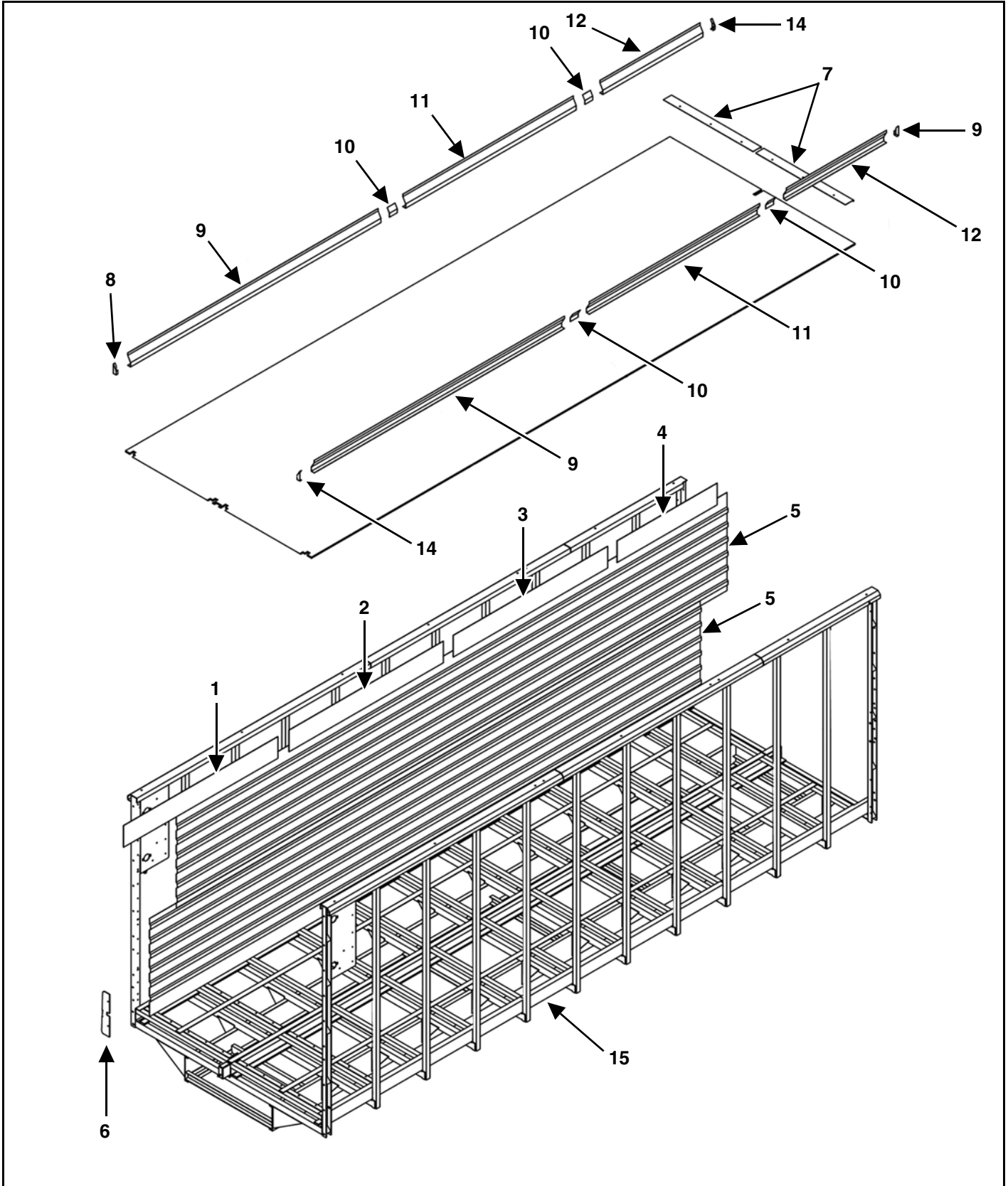
KEY	PART NUMBER	QTY	DESCRIPTION
1	26-0300	1	Bottom Auger Assembly
2	35-0006	2/3	3/8" x 3/8" x 1-1/4" Square Key
3	14-0003-2	10/14	1-1/4" Bearing Flange
4	14-0002-3	5/7	1-1/4" Bearing With Lock Collar
5	10-0095	1	60B15 1-1/4" Bore 3/8" Keyway Sprocket
6	111-0060-82	1	#60-82 Roller Chain Including Connector
7	24-0319	1	1st/2nd Auger Shield Complete
8	29-0002	4/6	Torsion Spring Chain Tightener Spring
9	25-0047	1	Auger Chain Tightener Bracket
10	41-0002	2/3	3" Nylon Slide Chain Tightener Paddle
11	110-60B18-1.25-1	1	60B18 1-1/4" Bore 3/8" Keyway Sprocket With Two 3/8" Set Screws
12	135-3838-1-1	3	3/8" x 3/8" x 1" Square Machine Key With Square Ends
13	26-0301	1	2nd Auger Assembly
14	24-0322-1	1	2nd/3rd Auger Shield
15	110-50B19-1.25-1	2	50B19 1-1/4" Bore 3/8" Keyway Sprocket With Two 3/8" Set Screws
16	26-0303	1	3rd Auger Assembly
17	41-0023-1	1/2	2nd/3rd Auger Bracket (Welded On)
18	43-0018	1/2	Tightener Bracket Tube Spacer
19	24-0323	1	3rd/4th Auger Shield Complete (Prior to SN 17R6224)
	24-0362	1	3rd/4th Auger Shield Complete (SN 17R6224 & Later)
20	10-0009	1	50B36 1-1/4" Bore 3/8" Keyway Sprocket With Two 3/8" Set Screws
21	26-0304	1	4th Auger Welded Assembly
22	111-0050-90	1	#50-90 Roller Chain Including Connector (Prior to SN 17R6224)
	11-0029	1	#50-93 Roller Chain Including Connector (SN 17R6224 & Later)
23	111-0050-98	1	#50-98 Roller Chain Including Connector
24	41-0009	1	1st/2nd Auger Chain Tightener Assembly
25	10-0012	1	50B17 1-1/4" Bore 3/8" Keyway Sprocket With Two 3/8" Set Screws
26	RTX-4A-KIT	1	4th Auger Kit (Prior to SN 17R6224)
	RTX-4A-6B-KIT	1	4th Auger Kit (SN 17R6224 & Later)
27	14-0318	1	Lower Auger Bearing Seal Spacer
28	14-0319	1	Lower Auger Bearing Seal
29	14-0320	1	Lower Auger Bearing Seal Cover

MAIN APRON DRIVE SYSTEM



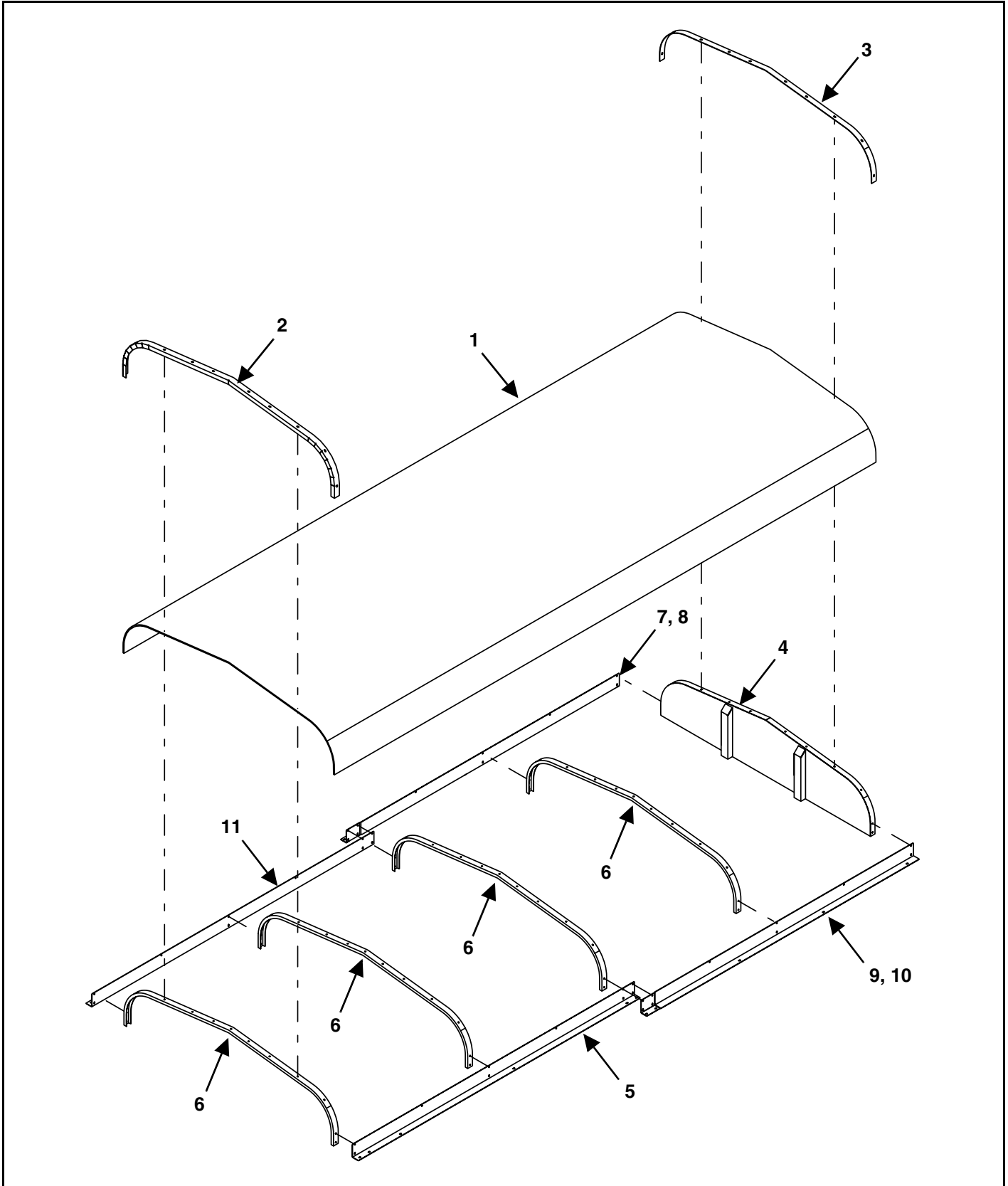
KEY	PART NUMBER	QTY	DESCRIPTION
1	See Page 32	1	Rear Apron Shield Assembly
2	830-5013-7Z	4	1/2-13 x 7" Tap Bolt Full Thread
3	25-0147	4	Main Apron Tightener Nut
4	23-0317-1	2	RT Rear Idler Pipe
	23-0318-1	2	RXT Rear Idler Pipe
5	See Page 28	2	Rear Floor Cover
6	110-667B7-2.00-3	4	667B7 2.25" Pitch Sprocket 2.00" Bore / 0.500" Key
7	822-0050-Z	4	1/2" Split Lock Washer
8	35-0008	4	1/2" x 1/2" x 2" Square Key
9	See Page 14	1	1/2" x 1/2" x 4" Square Machine Key With Square Ends
10	14-0054	1	Center Main Drive Bearing
	930-3602	1	Male Compression Fitting For Front
	30-0002	1	Straight Grease Zerk For Rear
11	14-0306	1	Main Roller Left Bearing Assembly
12	110-667B7-1.38-1	4	Rear Idler Sprocket With Bushing
	33-0310	8	Rear Idler Spacer
13	See Page 14	1	31.4:1 Berma Front Apron Gearbox 2" Bore, 1/2" Keyway
14	See Page 14	1	Front Apron Bearing Welded Assembly
15	27-0308	2	Reverse Chain Guide Panel
16	23-0300-1	1	Main Drive Shaft
17	930-3602	4	Male Connector Brass
18	735-.25CT	AR	1/4" Copper Tubing System (By the foot)
19	23-0300	1	Main Apron Drive Shaft Assembly
20	11-0416	2	RT616 667X Main Apron Chain Assembly
	11-0411	2	RT/RTX618 667X Main Apron Chain Assembly
	11-0412	2	RT/RTX620 667X Main Apron Chain Assembly
	11-0413	2	RT/RTX622 667X Main Apron Chain Assembly
	11-0414	2	RTX624 667X Main Apron Chain Assembly
	11-0415	2	RTX626 667X Main Apron Chain Assembly
21	30-0002	2	1/8" NPT Straight Grease Zerk
22	33-0307	1	3-1/2" Front Right Main Bearing Grease Line Assembly
23	11-0400-1	AR	Main Apron Slat
24	33-0306	1	50" Front Center Main Bearing Grease Line Assembly
25	11-0400	AR	Chain Slat With Attachments-667X
26	11-0008-3-D	AR	Attachment Link-D667X
27	11-0008-2	AR	Rivet, 3/8" x 1"
28	11-0008-1-D	AR	Pintle Chain Link-D667X

MAIN FRAME
2015 MODEL YEAR AND LATER



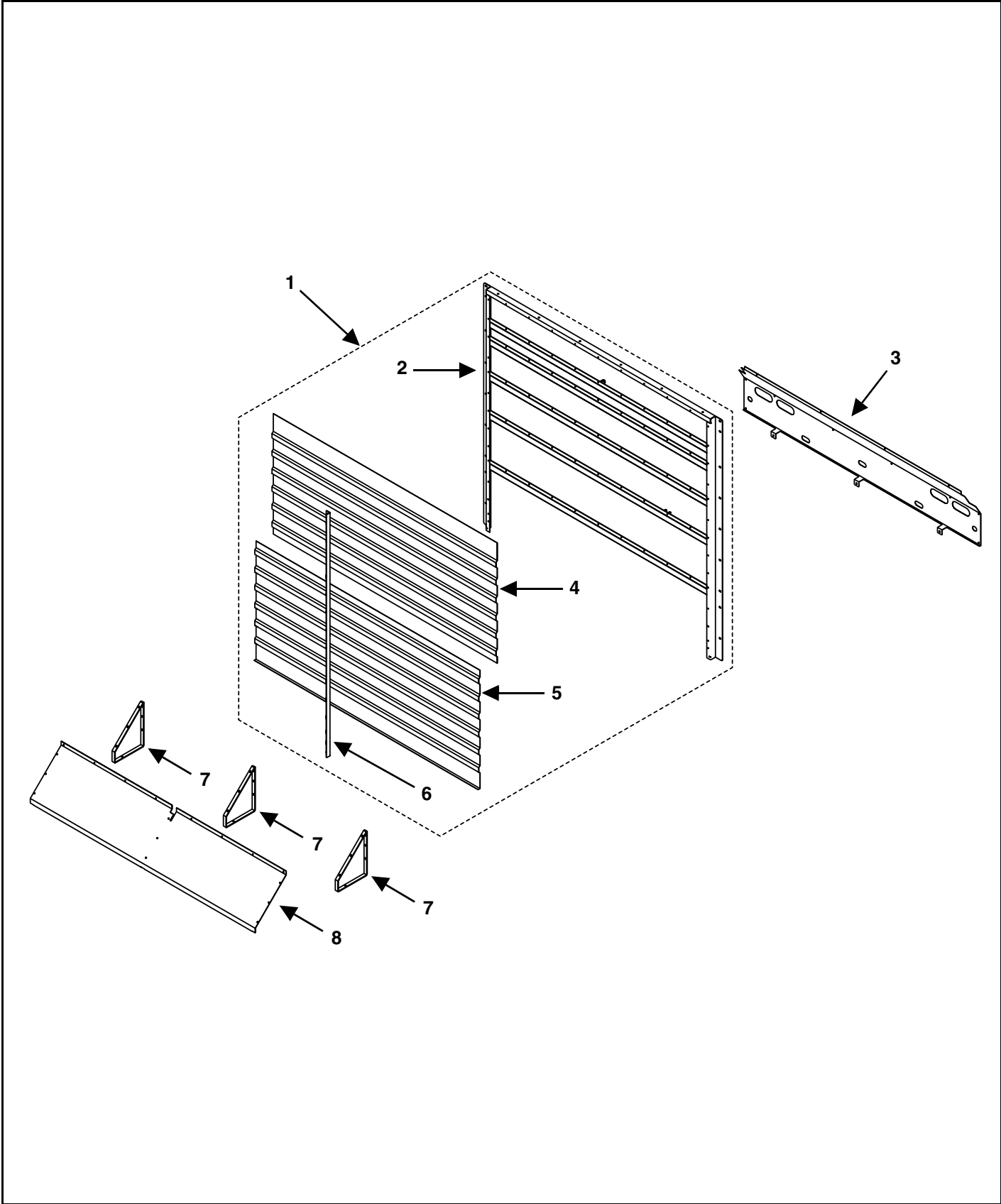
KEY	PART NUMBER	QTY	DESCRIPTION
1	25-0772	2	Extension Screen 9" x 74" (RT616, RT618, RT620, RT622)
	25-0748	2	Extension Screen 9" x 82" (RTX620, RTX622, RTX624, RTX626)
	25-0875	2	Extension Screen 9" x 97" (RT616, RT618, RT620, RT622)
	25-0879	2	Extension Screen 9" x 113" (RTX620, RTX622, RTX624, RTX626)
2	25-0772	2	Extension Screen 9" x 74" (RT616, RT618, RT620, RT622)
	25-0748	2	Extension Screen 9" x 82" (RTX620, RTX622, RTX624, RTX626)
	25-0878	2	Extension Screen 9" x 48" (RTX620, RT622)
	25-0880	2	Extension Screen 9" x 64" (RTX620)
	25-0882	2	Extension Screen 9" x 112" (RTX622, RTX624, RTX626)
3	25-0772	2	Extension Screen 9" x 74" (RT622)
	25-0748	2	Extension Screen 9" x 82" (RTX622, RTX624, RTX626)
4	25-0749	2	Extension Screen 9" x 48" (RT616, RT622, RTX624)
	25-0770	2	Extension Screen 9" x 72" (RT618, RTX626)
	25-0773	2	Extension Screen 9" x 96" (RT620)
	25-0768	2	Extension Screen 9" x 80" (RTX620)
	25-0769	2	Extension Screen 9" x 24" (RTX622)
	25-0877	2	Solid Extension Panel 9" x 95" (RT616, RT620)
	25-0876	2	Solid Extension Panel 9" x 119" (RT618, RT622)
	25-0881	2	Solid Extension Panel 9" x 63" (RTX620, RTX624)
	25-0883	2	Solid Extension Panel 9" x 39" (RTX622)
	25-0884	2	Solid Extension Panel 9" x 87" (RTX626)
5	761III-40.75-16	4	Painted Galvanized Panel 40-3/4" x 192" (RT616)
	761III-40.75-18	4	Painted Galvanized Panel 40-3/4" x 216" (RT618)
	761III-40.75-20	4	Painted Galvanized Panel 40-3/4" x 240" (RT620, RTX620)
	761III-40.75-22	4	Painted Galvanized Panel 40-3/4" x 264" (RT622, RTX622)
	761III-40.75-24	4	Painted Galvanized Panel 40-3/4" x 288" (RTX624)
	761III-40.75-26	4	Painted Galvanized Panel 40-3/4" x 312" (RTX626)
6	See Page 16	1	Variable Speed Cluster Drive Door Latch
7	100-8080-38	2	Rear Floor Cover
8	400-1501-3	2	Front Right And Rear Left Chain Guide Cap
9	400-1501-1	2	Front Chain Guide 96" (RT616, RTX624)
	400-1503-1	2	Front Chain Guide 120" (RT618, RT620, RT622, RTX620, RTX622, RTX626)
10	400-1501-2	2	Chain Guide Splice Connector (RT616, RT620, RTX620)
	400-1501-2	4	Chain Guide Splice Connector (RT622, RTX622, RTX624, RTX626)
11	400-1501-1	2	Middle Chain Guide 96" (RTX624, RTX626)
	500-1501-1	2	Middle Chain Guide 81-3/4" (RT222, RTX222)
12	500-1501-1	2	Rear Chain Guide 81-3/4" (RT616, RT618, RTX624, RTX626)
	500-1502-1	2	Rear Chain Guide 105-3/4" (RT620, RTX620)
	400-1501-7	2	Rear Chain Guide 48" (RT622, RTX622)
13	400-1521	1	Wood Floor (RT616)
	400-1525	1	Poly Floor (RT616)
	400-1522	1	Wood Floor (RT618)
	400-1526	1	Poly Floor (RT618)
	400-1523	1	Wood Floor (RT620)
	500-1502	1	Poly Floor (RT620, RTX620)
	400-1524	1	Wood Floor (RT622)
	500-1503	1	Poly Floor (RT622, RTX622)
	500-1501	1	Poly Floor (RTX624)
	500-1504	1	Poly Floor (RTX626)
14	400-1501-4	2	Front Left And Rear Right Chain Guide Cap
15	Call 1-800-325-9103	1	Main Frame Welded Assembly

ROOF ASSEMBLY



KEY	PART NUMBER	QTY	DESCRIPTION
0	400-1317	1	Complete Roof Assembly (16')
	400-1318	1	Complete Roof Assembly (18')
	400-1319	1	Complete Roof Assembly (20')
	400-1320	1	Complete Roof Assembly (22')
	400-1322	1	Complete Roof Assembly (24')
	400-1328	1	Complete Roof Assembly (16') (6" Higher Roof Option)
	400-1329	1	Complete Roof Assembly (18') (6" Higher Roof Option)
	400-1330	1	Complete Roof Assembly (20') (6" Higher Roof Option)
	400-1331	1	Complete Roof Assembly (22') (6" Higher Roof Option)
	400-1332	1	Complete Roof Assembly (24') (6" Higher Roof Option)
1	100-9990-14-2	4	17'2" Ribbed Steel Roof Sheet (16')
	100-9990-15-8	4	19'2" Ribbed Steel Roof Sheet (18')
	100-9990-51-1	4	21'2" Ribbed Steel Roof Sheet (20')
	100-9990-54-1	4	23'2" Ribbed Steel Roof Sheet (22')
	100-9990-145	4	25'2" Ribbed Steel Roof Sheet (24')
2	400-1313-2	1	Front Roof Cap
	400-1323-2	1	Front Left Roof Cap (6" Higher Roof Option) (Not Illustrated)
	400-1323-3	1	Front Right Roof Cap (6" Higher Roof Option) (Not Illustrated)
3	400-1313-8	1	Roof Guard Strap
	400-1323-4	2	Roof Guard Strap (6" Higher Roof Option) (Not Illustrated)
4	400-1317-1	1	Rear Roof End Cap
	400-1328-1	1	Rear Roof End Cap (6" Higher Roof Option)
5	400-1313-3	1	Front Left Roof Rail (16', 20', 24')
	400-1314-1	1	Front Left Roof Rail (18')
	400-1316-1	1	Front Left Roof Rail (22')
6	400-1313-1	4	Roof Bow (RT616, RT618)
	400-1323-1	4	Roof Bow (RT616/RT618 With 6" Higher Roof Option)
	400-1313-1	5	Roof Bow (RT620, RTX620)
	400-1323-1	5	Roof Bow (RT620/RTX620 With 6" Higher Roof Option)
	400-1313-1	6	Roof Bow (RT622, RTX622, RTX224)
	400-1323-1	6	Roof Bow (RT622/RTX622/RTX624 With 6" Higher Roof Option)
7	400-1313-6	1	Rear Right Roof Rail (16')
	400-1314-4	1	Rear Right Roof Rail (18')
	400-1315-4	1	Rear Right Roof Rail (20')
	400-1316-6	1	Rear Right Roof Rail (22')
	400-1321-2	1	Rear Right Roof Rail (24')
8	400-1315-2	1	Center Right Roof Rail (20', 24') (Not Illustrated)
	400-1316-4	1	Center Right Roof Rail (22') (Not Illustrated)
9	400-1313-5	1	Rear Left Roof Rail (16')
	400-1314-3	1	Rear Left Roof Rail (18')
	400-1315-3	1	Rear Left Roof Rail (20')
	400-1316-5	1	Rear Left Roof Rail (22')
	400-1321-1	1	Rear Left Roof Rail (24')
10	400-1315-1	1	Center Left Roof Rail (20', 24') (Not Illustrated)
	400-1316-3	1	Center Left Roof Rail (22') (Not Illustrated)
11	400-1313-4	1	Front Right Roof Rail (16', 20', 24')
	400-1314-2	1	Front Right Roof Rail (18')
	400-1316-2	1	Front Right Roof Rail (22')

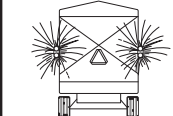
REAR STATIONARY GATE

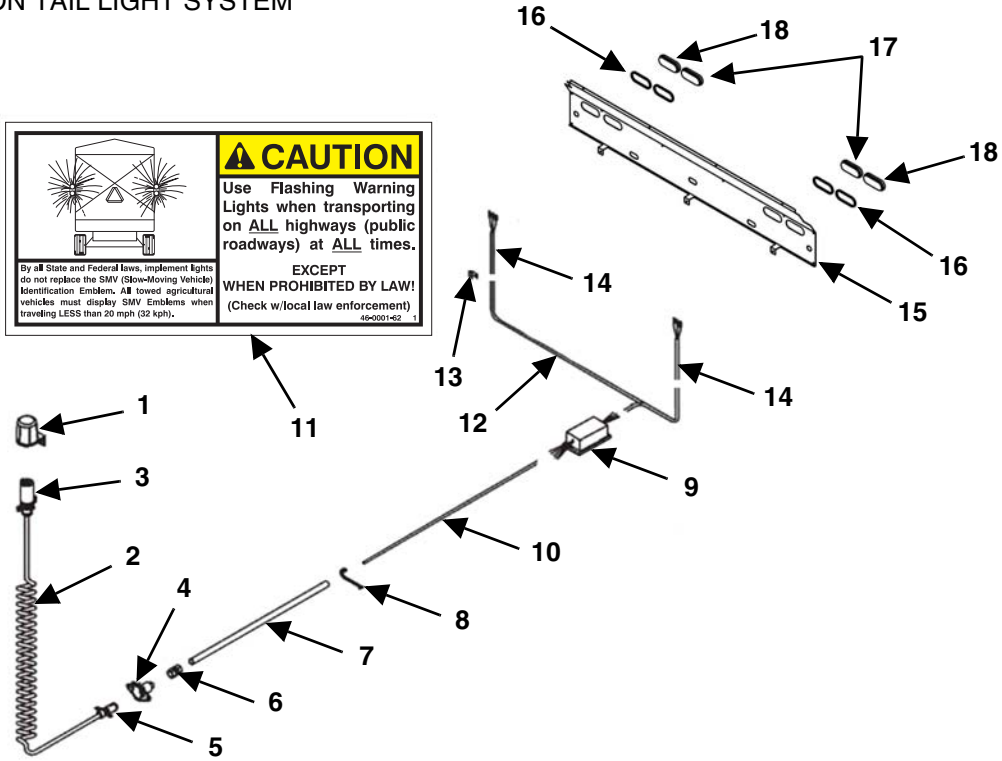


KEY	PART NUMBER	QTY	DESCRIPTION
1	400-1410	1	Rear Stationary Gate Assembly
	400-1406	1	Rear Stationary Gate Assembly (12" Higher Sides Option)
2	400-1410-1	1	Rear Stationary Gate Frame Weldment
	400-1406-1	1	Rear Stationary Gate Frame Weldment (12" Higher Sides Option)
3	24-0356	1	Rear Apron Shield With Decals
4	7611I-40.75-87.5	1	Upper Painted Galvanized Panel
5	400-1406-2	1	Lower Painted Galvanized Panel
6	400-1410-2	1	Vertical Support
	400-1406-3	1	Vertical Support (12" Higher Sides Option)
7	25-0765	3	Rear Apron Deflector Support Bracket
8	24-0316-1	1	Rear Apron Deflector

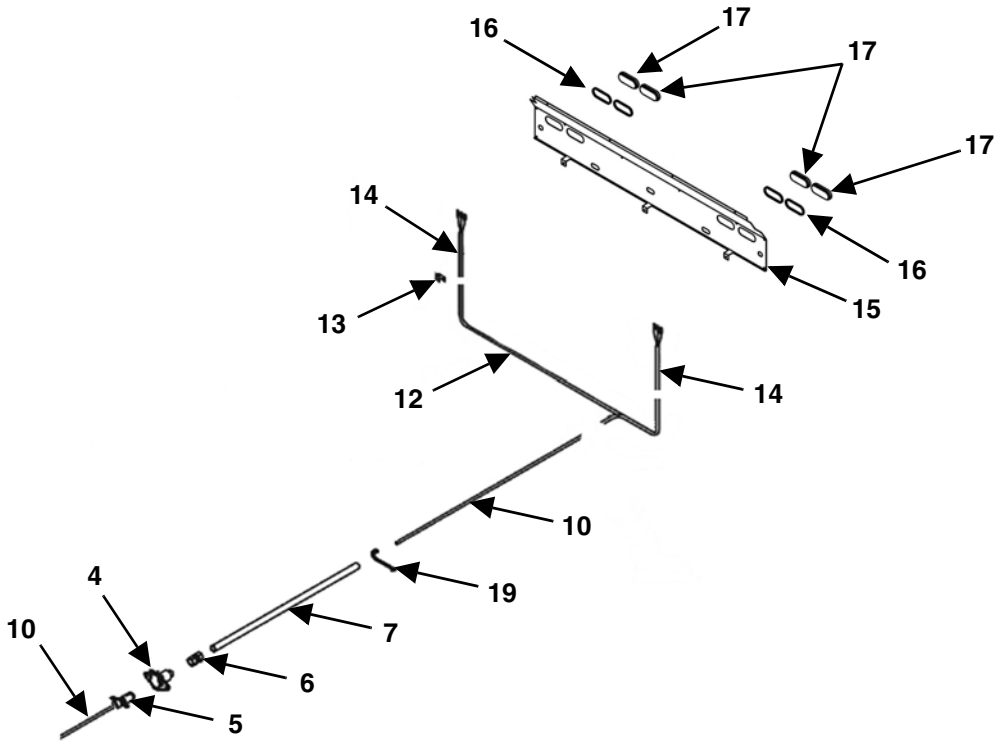
HIGHWAY LIGHT PACKAGE KIT

TRAILER / WAGON TAIL LIGHT SYSTEM

	CAUTION
Use Flashing Warning Lights when transporting on ALL highways (public roadways) at ALL times.	
By all State and Federal laws, Implement Lights do not replace the SMV (Slow-Moving Vehicle) Identification Emblem. All towed agricultural vehicles must display SMV Emblems when traveling LESS than 20 mph (32 kph).	
EXCEPT WHEN PROHIBITED BY LAW! (Check w/local law enforcement)	
46-0001-62 1	

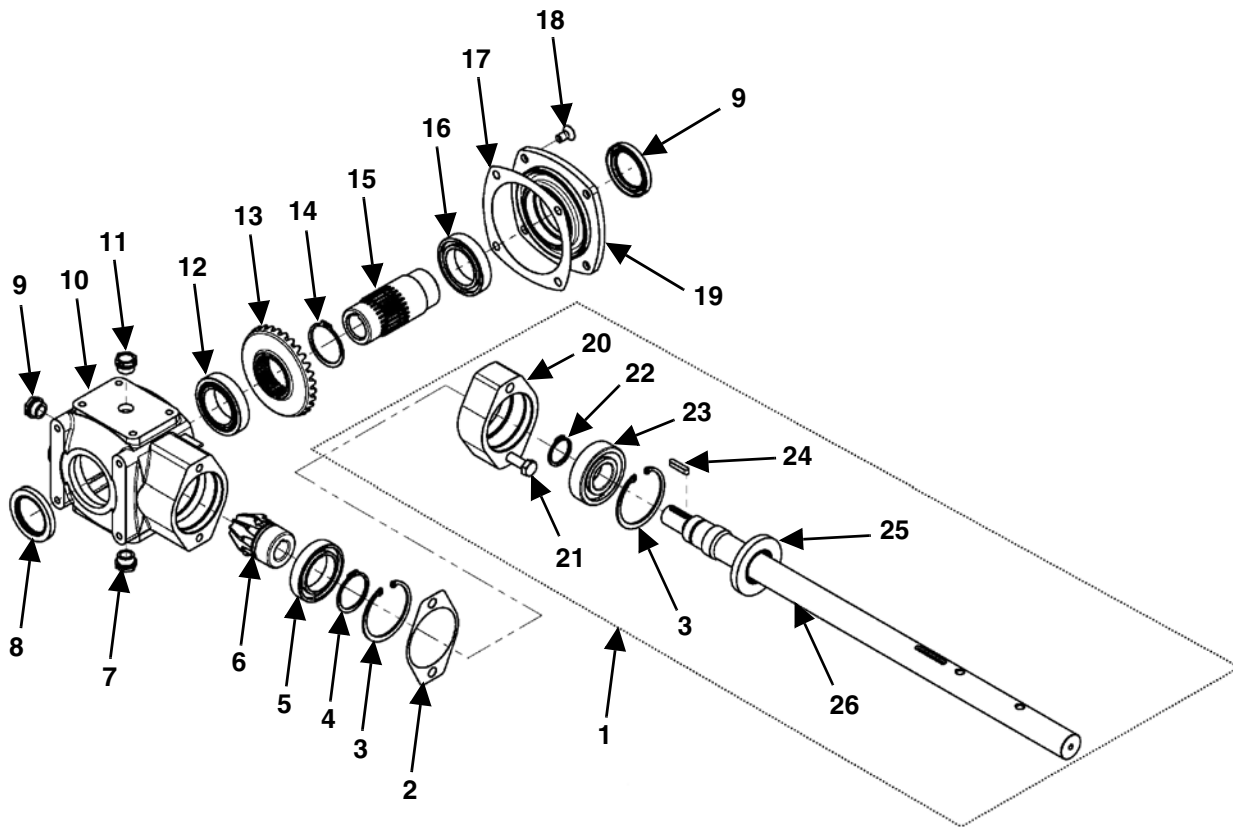


TRUCK TAIL LIGHT SYSTEM



KEY	PART NUMBER	QTY	DESCRIPTION
1	56-0009	1	Store-A-Way Plug Holder (For 7 Pole Plug)
2	56-0005	1	Coil Cable Assembly
3	56-0005-4	1	7-Contact Plug Only
4	56-0004	1	4-Pin Socket
5	56-0005-1	1	4 Pole Plug
6	56-0007	1	1/2" EMT Coupler
7	56-0056	1	Light Wire Tube 1/2" Diameter x 22" Long
8	56-0033	2	3/4" Loom Clamp
9	56-0084	1	LED Enhancer Module With Connectors
10	56-0037	AR	4 Conductor Trailer Cable
11	46-0001-62	1	Caution Tail Light Decal
12	56-0130-1	1	Y-Harness Less Light Plug Leads
13	32-0024	2	3/8" Plated Loom Clamp
14	56-0130-2	2	Right/Left Light Pigtail Lead
15	See Page 34	1	Rear Apron Shield With Decals
16	56-0082	4	Oval Grommet
17	56-0115	2	6" 7-Diode Oval Lamp With Red LED (Trailer/Wagon Mount)
	56-0115	4	6" 7-Diode Oval Lamp With Red LED (Truck Mount)
18	56-0081	2	6" 7-Diode Oval Lamp With Amber LED (Trailer/Wagon Mount)
19	56-0053	2	1/4" Vinyl Coated Steel Clamp

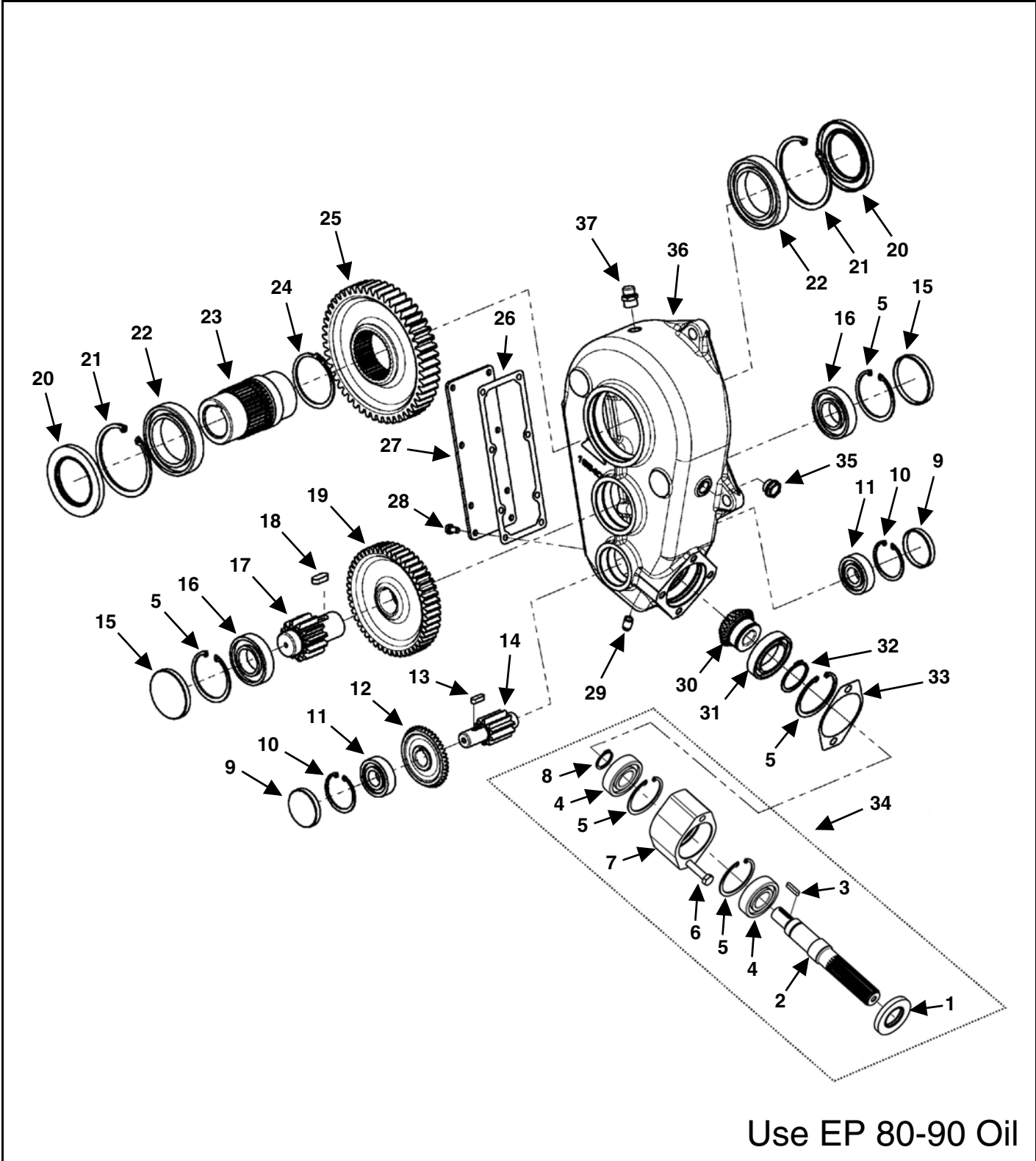
AUGER GEARBOX



Use EP 80-90 Oil

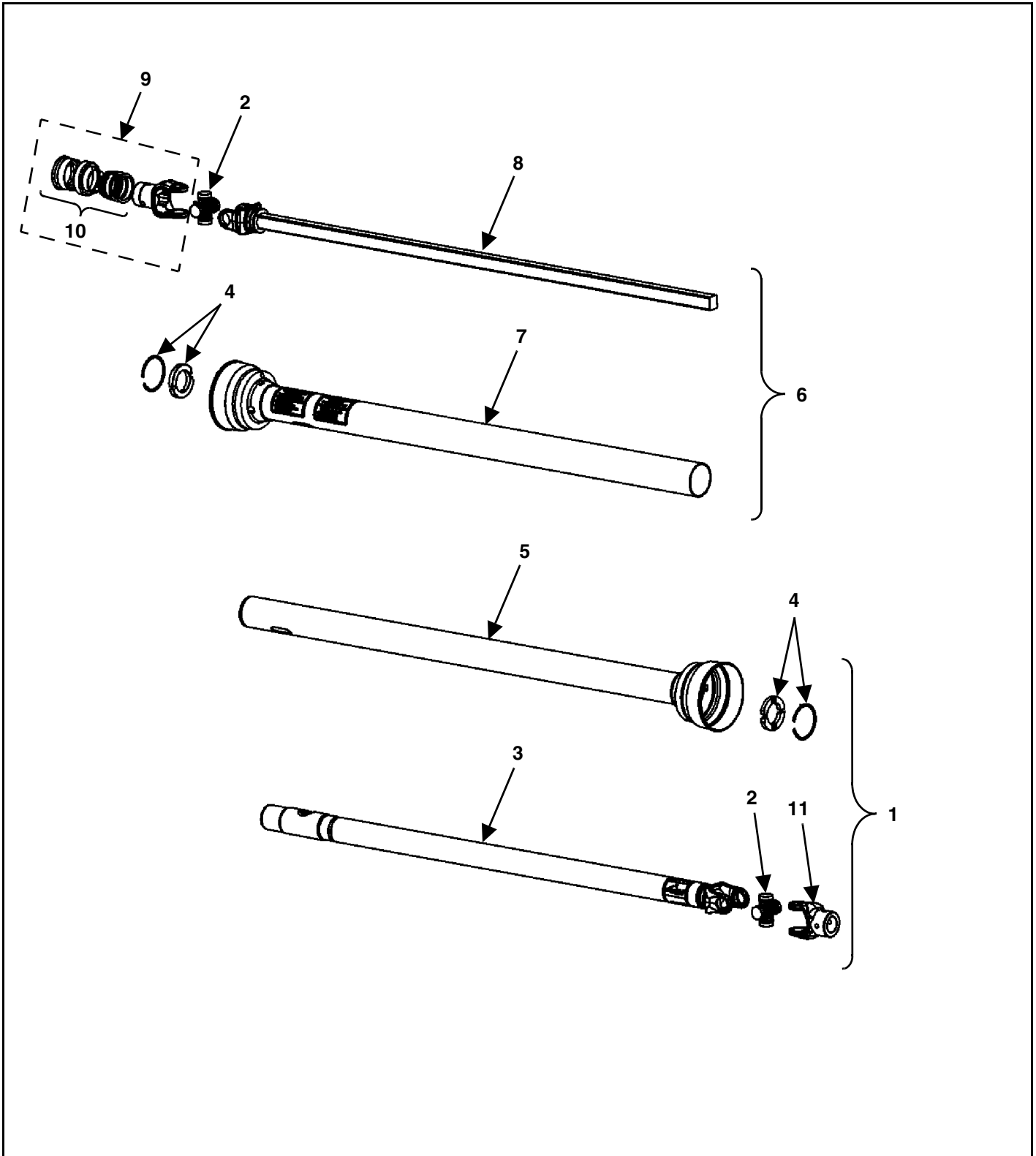
KEY	PART NUMBER	QTY	DESCRIPTION
0	19-0207	1	3.1:1 Berma Auger Gearbox
1	19-0207-12	1	Complete Input Shaft Kit
2	19-0203-17	1	Gearbox Input Gasket
3	619-0001-16	1	Snap Ring
4	619-0001-19	1	Snap Ring
5	619-0012-2	1	Bearing
6	19-0207-4	1	Pinion
7	19-0203-15	1	Oil Plug
8	19-0203-10	2	Double Lip Oil Seal
9	19-0203-14	1	Oil Level Indicator
10	19-0207-1	1	Housing
11	19-0203-16	1	Oil Breather Plug
12	19-0203-5	1	Output Bearing
13	19-0207-3	1	Gear
14	19-0203-3	1	Snap Ring
15	19-0207-2	1	1-1/4" Diameter Hub
16	619-0001-18	1	Bearing
17	19-0207-5	1	Gasket
18	19-0203-13	4	M10 x 20 Screw
19	19-0203-12	1	Cover
20	19-0207-6	1	Support
21	19-0207-7	2	M12 x 65 Hex Head Screw
22	19-0207-8	1	Snap Ring
23	619-0001-15	1	Bearing
24	19-0207-9	1	Key
25	19-0207-10	1	Oil Seal
26	19-0207-11	1	Input Shaft

FRONT APRON GEARBOX



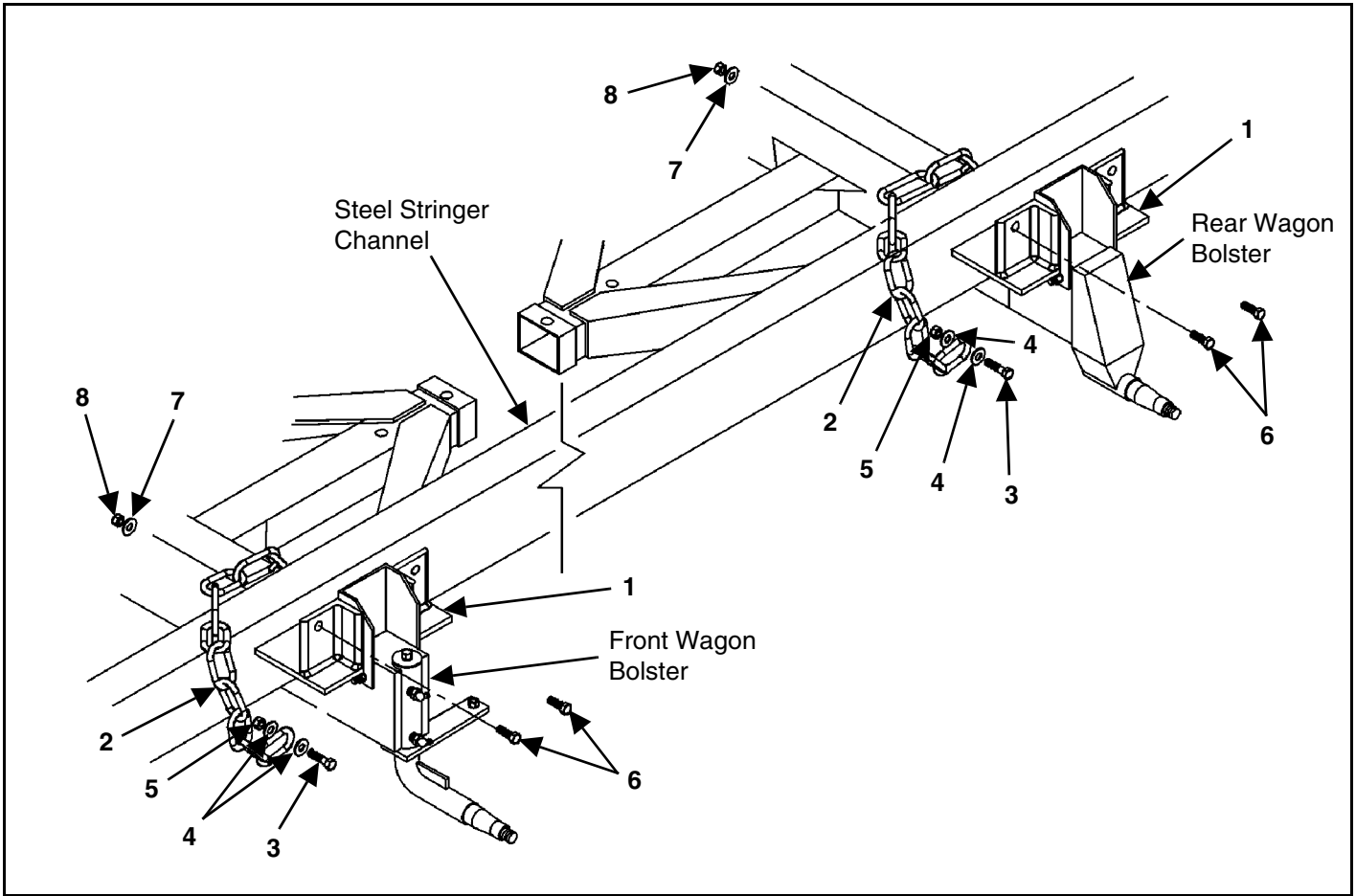
KEY	PART NUMBER	QTY	DESCRIPTION
0	19-0208	1	31.4:1 Berma Apron Gearbox
1	19-0207-10	1	Oil Seal
2	19-0212-1	1	Shaft
3	19-0207-9	1	Key
4	619-0001-15	2	Bearing
5	619-0001-16	5	Snap Ring
6	19-0208-16	2	M12 x 85 Hex Head Screw
7	19-0208-14	1	Support
8	19-0207-8	1	Snap Ring
9	19-0206-14	2	Cap
10	19-0206-11	2	Snap Ring
11	19-0206-10	2	Bearing
12	19-0208-9	1	Gear
13	19-0208-10	1	Key
14	19-0208-8	1	Pinion
15	619-0001-22	2	Cap
16	19-0208-7	2	Bearing
17	19-0208-5	1	Pinion
18	19-0208-6	1	Key
19	19-0208-4	1	Gear
20	19-0201-11	2	Oil Seal
21	19-0201-6	2	Snap Ring
22	19-0201-5	2	Bearing
23	19-0208-2	1	2" Diameter Hub
24	19-0201-4	1	Snap Ring
25	19-0208-3	1	Gear
26	19-0208-12	1	Cover Gasket
27	19-0208-13	1	Cover
28	619-0001-27	8	M8 x 16 Cover Bolt
29	19-0208-18	1	Oil Plug
30	19-0208-11	1	Pinion
31	619-0012-2	1	Bearing
32	619-0001-19	1	Snap Ring
33	19-0203-17	1	Input Gasket
34	19-0212-2	1	Complete Input Shaft Assembly
35	19-0203-14	1	Oil Level Indicator
36	19-0208-1	1	Housing
37	19-0208-19	1	Oil Breather Plug

12R UNIVERSAL JOINT TELESCOPING ASSEMBLY WITH GUARD



KEY	PART NUMBER	QTY	DESCRIPTION
0	18-0017	1	Joint Assembly, 12R Universal
1	18-0017-4	1	Joint And Tube Half With Guard (Implement Half)
2	18-0017-9	2	12R Cross And Bearing Kit
3	18-0017-6	1	Yoke, Tube, And Slip Sleeve
4	18-0017-10	2	Nylon Repair Kit
5	18-0017-12	1	Inner Guard With Bearing And Retainer
6	18-0017-1	1	Joint And Shaft Half With Guard (Tractor Half)
7	18-0017-11	1	Outer Guard With Bearing And Retainer
8	18-0017-3	1	Yoke And Shaft
9	18-0017-7	1	Spring - Lock Yoke Assembly
10	18-0005-16	1	Spring - Lock Repair Kit
11	18-0017-13	1	Yoke, 1-1/4" Bore, 1/4" Keyway, With Roll Pin Hole

STEEL STRINGER TIE DOWN KIT



KEY	PART NUMBER	QTY	DESCRIPTION
0	52-0003S	1	Tie Down Kit (Steel Stringers)
1	75-5015	4	Standard Tie Down Bracket
2	52-0003-1	4	51" Standard Tie Down Chain
3	75-0341-4-HD	4	61" Heavy Duty Tie Down Chain For Riser Option
	851-3816-1.5Z	4	Bolt, Hex Machine - 3/8" x 1-1/2"
4	805-0038-Z	8	3/8" Flat Washer
5	815-3816-Z	4	3/8" Lock Nut
6	851-5013-1.5-Z	8	1/2" x 1-1/2" Hex Machine Bolt
7	805-0050-Z	8	1/2" Flat Washers
8	815-5013-Z	8	1/2" Lock Nuts

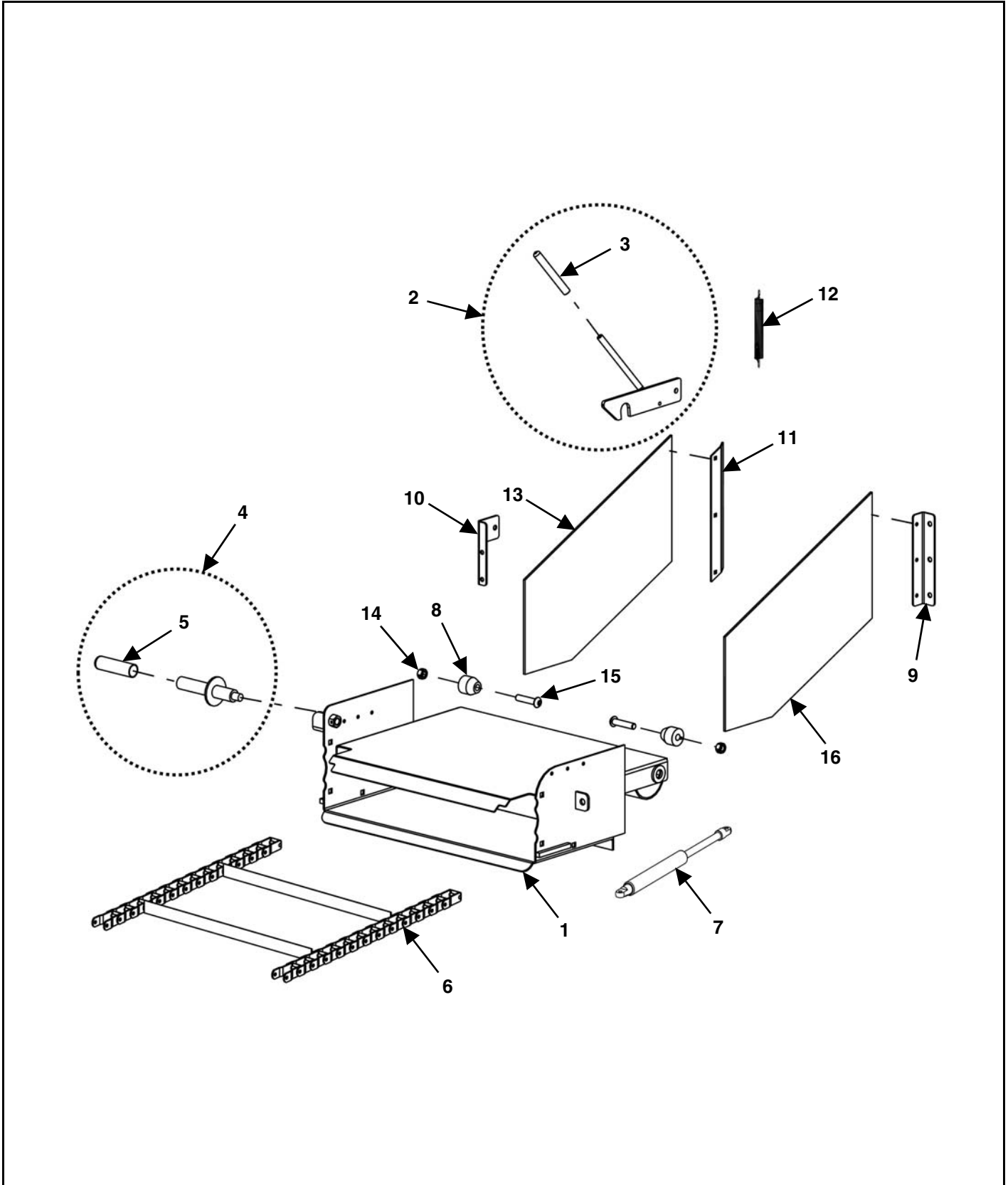


OPTIONAL EQUIPMENT



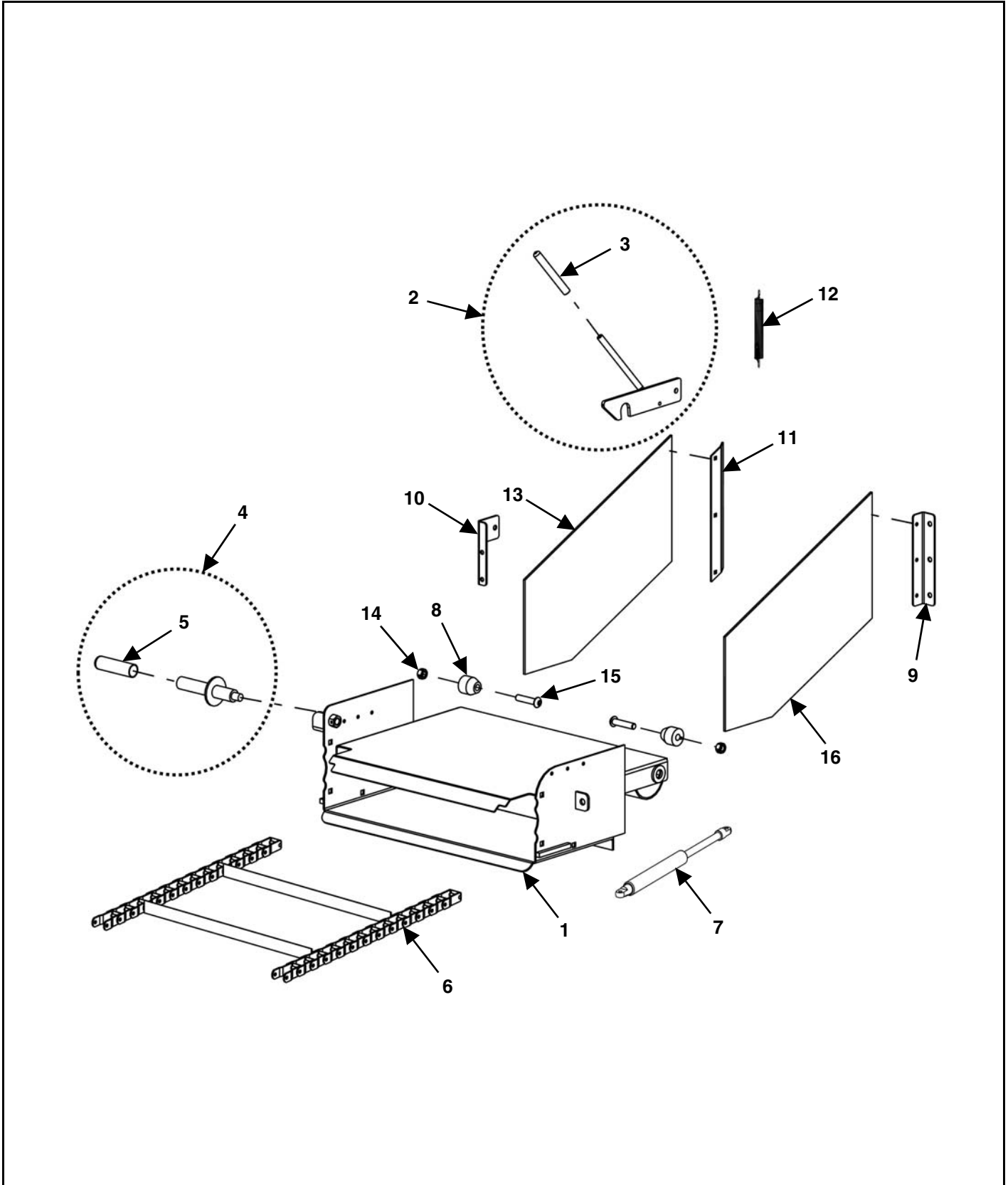
DESCRIPTION	PAGE #
OPTIONAL 4TH AUGER	See Page 24
RT-CE-1K, RT-CE-2K, RT-CE-3K 24", 36", 48" Chain Cross Conveyor Extension Kit	See Page 46
HYDRAULIC FRONT DRIVE	See Page 50
HYDRAULIC FRONT DRIVE TRUCK MOUNT	See Page 51

RT-CE-1K, RT-CE-2K, RT-CE-3K
24", 36", 48" CHAIN CROSS CONVEYOR EXTENSION KIT



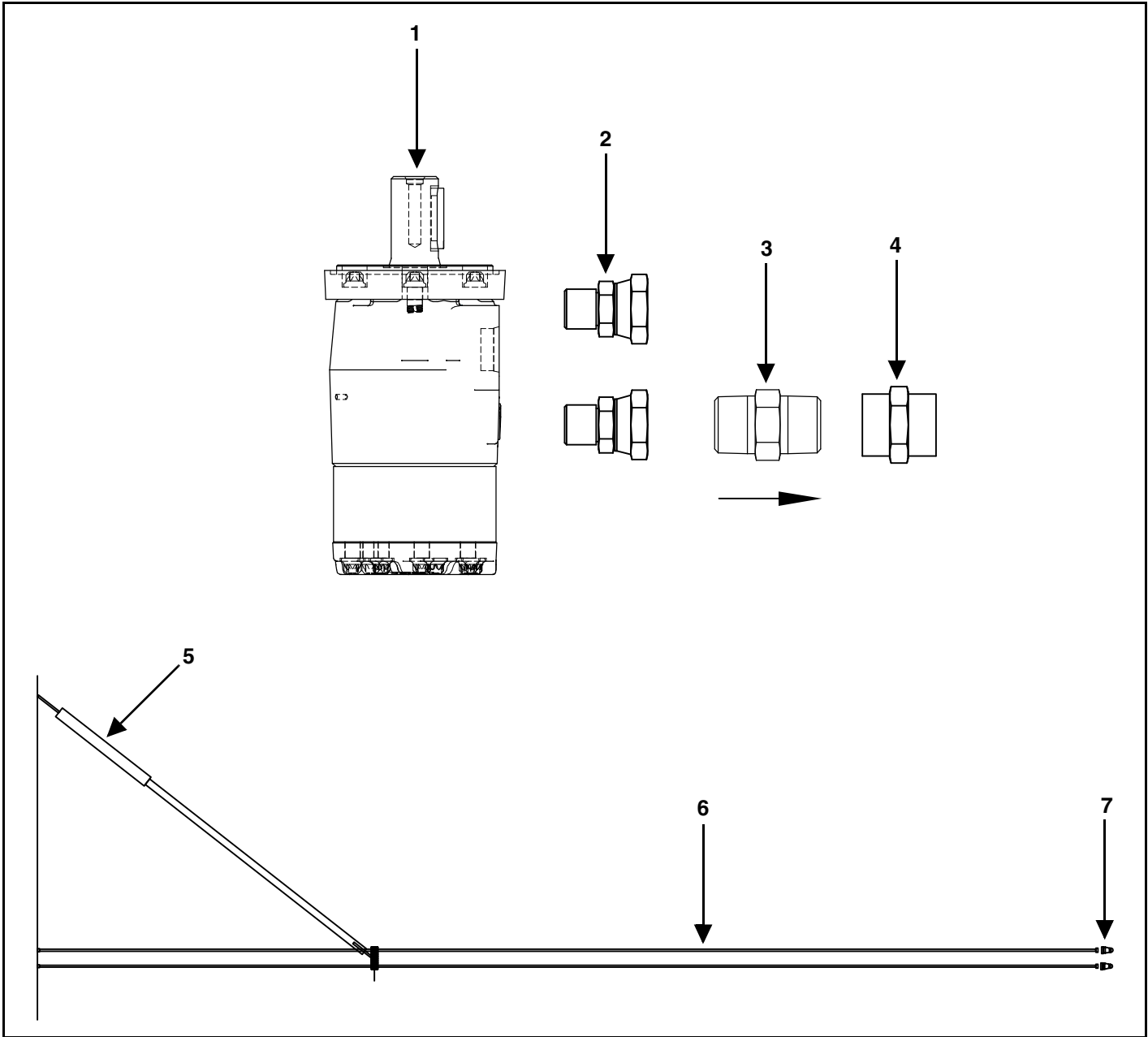
KEY	PART NUMBER	QTY	DESCRIPTION
	RT-HCE	1	Non-Hydraulic to Hydraulic Extension Conversion Kit
0	RT-CE-1K	1	Left Discharge 24" Cross Conveyor Extension Kit
	RT-CE-1K-RH	1	Right Discharge 24" Cross Conveyor Extension Kit
	RT-HCE-1K	1	Left Discharge 24" Hydraulic Cross Conveyor Extension Kit
	RT-HCE-1K-RH	1	Right Discharge 24" Hydraulic Cross Conveyor Extension Kit
	RT-CE-2K	1	Left Discharge 36" Cross Conveyor Extension Kit
	RT-CE-2K-RH	1	Right Discharge 36" Cross Conveyor Extension Kit
	RT-HCE-2K	1	Left Discharge 36" Hydraulic Cross Conveyor Extension Kit
	RT-HCE-2K-RH	1	Right Discharge 36" Hydraulic Cross Conveyor Extension Kit
	RT-CE-3K	1	Left Discharge 48" Cross Conveyor Extension Kit
	RT-CE-3K-RH	1	Right Discharge 48" Cross Conveyor Extension Kit
	RT-HCE-3K	1	Left Discharge 48" Hydraulic Cross Conveyor Extension Kit
	RT-HCE-3K-RH	1	Right Discharge 48" Hydraulic Cross Conveyor Extension Kit
1	45-0301-1	1	Left Discharge 24" Cross Conveyor Extension Frame Weldment
	45-0301-1-RH	1	Right Discharge 24" Cross Conveyor Extension Frame Weldment
	45-0301-1-FB	1	Left Discharge 24" Hydraulic Cross Conveyor Extension Frame Weldment
	45-0301-1-FB-RH	1	Right Discharge 24" Hydraulic Cross Conveyor Extension Frame Weldment
	45-0302-1	1	Left Discharge 36" Cross Conveyor Extension Frame Weldment
	45-0302-1-RH	1	Right Discharge 36" Cross Conveyor Extension Frame Weldment
	45-0302-1-FB	1	Left Discharge 36" Hydraulic Cross Conveyor Extension Frame Weldment
	45-0302-1-FB-RH	1	Right Discharge 36" Hydraulic Cross Conveyor Extension Frame Weldment
	45-0305-1	1	Left Discharge 48" Cross Conveyor Extension Frame Weldment
	45-0305-1-RH	1	Right Discharge 48" Cross Conveyor Extension Frame Weldment
	45-0305-1-FB	1	Left Discharge 48" Hydraulic Cross Conveyor Extension Frame Weldment
	45-0305-1-FB-RH	1	Right Discharge 48" Hydraulic Cross Conveyor Extension Frame Weldment
2	25-0726	1	Extension Catch Bracket With Handle & Grip (Non-Hydraulic Lift Only)
3	51-0006	1	1/2" x 4" Rubber Grip Extension Handle (Non-Hydraulic Lift Only)
4	51-0001	1	Cross Conveyor Extension Handle Welded Assembly With Grip, 24" (Non-Hydraulic Lift Only)
	51-0001	2	Cross Conveyor Extension Handle Welded Assembly With Grip, 36" & 48" (Non-Hydraulic Lift Only)
5	51-0004	1	1" x 4" Black Plastic Grip Extension Handle, 24"(Non-Hydraulic Lift Only)
	51-0004	2	1" x 4" Black Plastic Grip Extension Handle, 36" & 48" (Non-Hydraulic Lift Only)
6	11-0281-2-D	1	Cross Apron Pintle Chain Extension Assembly 662-13 Link, 24"
	11-0281-2-D-36	1	Cross Apron Pintle Chain Extension Assembly 662-13 Link, 36"
	11-0281-2-D-48	1	Cross Apron Pintle Chain Extension Assembly 662-13 Link, 48"
7	155-GS-0001	2	Gas Spring, 5.5" Stroke, 15", 80 PSI, 24" (Non-Hydraulic Lift Only)
	955-3703	2	Gas Spring, 5.5" Stroke, 15",120 PSI, 36" & 48" (Non-Hydraulic Lift Only)
8	23-0310	2	Chain Hold Down Shaft 17/32" ID x 1-1/2" OD x 1.5"
9	25-0075	1	Extension Belting Bracket

RT-CE-1K, RT-CE-2K, RT-CE-3K
24", 36", 48" CHAIN CROSS CONVEYOR EXTENSION KIT (CONT'D)



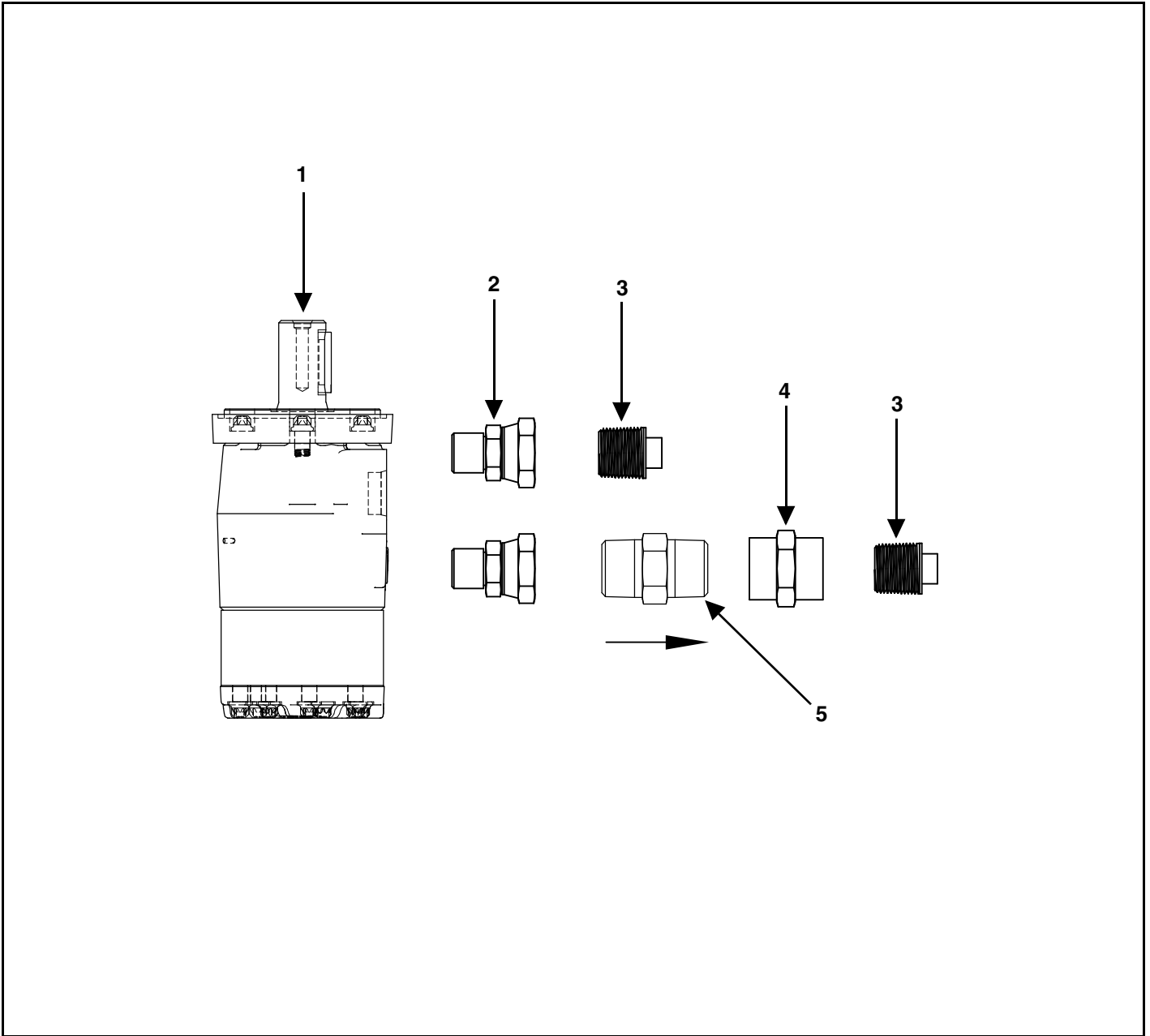
KEY	PART NUMBER	QTY	DESCRIPTION
10	25-0728	1	Extension Handle Catch Mount Bracket (Non-Hydraulic Lift Only)
11	25-0833	1	Front Extension Belting Bracket
12	29-0005	1	Extension Spring Front Gate & Extension Catch (Non-Hydraulic Lift Only)
13	49-0321	1	Front Extension Belt (24" Extension)
	49-0318	1	Front Extension Belt (48" Extension)
	49-0320	1	Front Extension Belt (48" Extension)
14	814-5013-Z	2	1/2-13 Indented Lock Nut
15	832-5013-2.25Z	2	1/2"-13 x 2-1/4" Finish Button Socket Cap Screw
16	49-0312	1	Rear Extension Belt (24" Extension)
	49-0317	1	Rear Extension Belt (36" Extension)
	49-0319	1	Rear Extension Belt (48" Extension)
NS	25-0755	1	Cylinder Upper Mount Weldment (Hydraulic Extension)
NS	25-0804	2	Boss Plate Front Pipe Weldment (Hydraulic Extension)
NS	29-0029	1	Hydraulic Hose Tender Spring Kit With Sleeve & Hardware (Hydraulic Extension)
NS	155-2501-6-6	2	Hydraulic Fitting (Hydraulic Extension)
NS	155-2-10-1.125-2	1	Hydraulic Cylinder 2" Bore x 10" Stroke (Hydraulic Extension)
NS	155-04R17-57-1	1	1/4" x 57" Hose (Hydraulic Extension)
NS	155-04R17-45-1	1	1/4" x 45" Hose (Hydraulic Extension)
NS	155-2502-6-6	2	Hydraulic Fitting (Hydraulic Extension)
NS	55-0013	2	Male Coupling Tip (Hydraulic Extension)
NS	55-0051	2	1/4" x 130" Hose (Hydraulic Extension)
NS	55-0324	2	Twin Series Hose Clamp (Hydraulic Extension)
NS	55-0316	1	Hydraulic Pipe 3/8" SCH40 x 24-7/8" (Hydraulic Extension)
NS	55-0309	1	Hydraulic Pipe 3/8" SCH40 x 26-3/8" (Hydraulic Extension)
NS	55-0033-S-1	1	1/4" Twin Hose Clamp Insert Only (Hydraulic Extension)
NS	75-0205-9	1	7/32" x 2" Cotter Pin (Hydraulic Extension)
NS	955-3609	2	3/8" NPT Coupler (Hydraulic Extension)
NS	833-0025-Z	4	1/4" Push Bolt Retainer (Hydraulic Extension)

HYDRAULIC FRONT DRIVE



KEY	PART NUMBER	QTY	DESCRIPTION
1	55-0099	1	9.6 CU. IN. T-Series Motor
2	55-0048	2	6900-10-12 Adapter
3	155-CV-1906P	1	25 GPM Check Valve
4	155-5000-12-12	1	12FP-12FP Female Pipe Coupling
5	29-0029	1	Hose Tender Spring W/Sleeve & Clamp
6	155-08R16-132-1	2	Hydraulic Hose, 1/2" x 132", 1/2-14 MP x 3/4-16 MP
7	55-0013	2	Male Coupling Tip

HYDRAULIC FRONT DRIVE TRUCK MOUNT



KEY	PART NUMBER	QTY	DESCRIPTION
1	55-0099	1	9.6 CU. IN. T-Series Motor
2	55-0048	2	6900-10-12 Adapter
3	55-0075	2	3/4" Poly Plug
4	155-5000-12-12	1	12FP-12FP Female Pipe Coupling
5	155-CV-1906P	1	25 GPM Check Valve



MAINTENANCE RECORD

MODEL NO. _____

SERIAL NO. _____

DATE	SERVICE PERFORMED

DATE	SERVICE PERFORMED

Manufactured by:

Meyer Manufacturing Corporation

674 W. Business Cty Rd A

Dorchester, WI 54425

Phone: 1-800-325-9103

Fax: 715-654-5513

Email: sales@meyermfg.com

Website: www.meyermfg.com





Meyer Manufacturing Corporation

674 W. Business Cty Rd A

Dorchester, WI 54425

Phone: 1-800-325-9103

Fax: 715-654-5513

Email: sales@meyermfg.com

Website: www.meyermfg.com