



RT / RTX GRAIN KIT



Installation / Operator's
Supplement Manual



1.0 IMPORTANT INFORMATION

The serial number plate is riveted on the left hand side of the rear panel enclosure.

Please enter the model, serial number and additional information in the space provided for future reference.

Model No. _____

Serial No. _____

Date of Purchase _____

Dealership _____

Dealership Phone No. _____

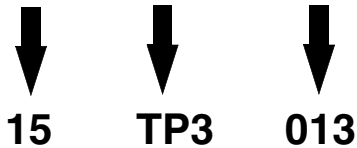


Always use your serial number when requesting information or when ordering parts.

HOW TO READ YOUR SERIAL NUMBER

EXAMPLE: 15TP3013

Model Year / Model / Sequence Of Build



Meyer Manufacturing Corporation

574 West Center Avenue

Dorchester, WI 54425

Phone: 1-800-325-9103

Fax: 715-654-5513

Email: sales@meyermfg.com

Website: www.meyermfg.com



2.0 INTRODUCTION

Congratulations on your purchase of a new Meyer farm equipment product. Undoubtedly you have given much consideration to your purchase and we're proud that you have selected Meyer. Pride in craftsmanship, engineering and customer service have made Meyer products the finest in the farm equipment industry today.

There is no substitute for quality. That is why thousands of people like you have purchased Meyer farm equipment. They felt it was the best equipment to serve their farming needs, now and in years to come. We ask that you follow our policy of "safety first", and we strongly suggest that you read through the Operator's & Parts manual before operating your Meyer farm equipment. Meyer Manufacturing Corporation wants to thank you for not compromising quality. We are determined to offer excellence in customer service as well as provide you with the very best value for your dollar.

Sincerely,

*All Employees of
MEYER MANUFACTURING CORPORATION*

This manual is a Supplement Manual to the RT / RTX Series Front And Rear Unload Owner's Operator's manual. Both manuals need to be read and understood by all parties operating this equipment.

The Grain Kit is an attachment mounted to the back of the RT / RTX Series Front And Rear Unload forage box used to discharge grains.



IMPORTANT: You are urged to study this manual and follow the instructions carefully. Your efforts will be repaid in better operation and service as well as a savings in time and repair expense. Failure to read this manual and understand the machine could lead to serious injury. If you do not understand instructions in this manual, contact either your dealer or Meyer Manufacturing Corp. at Dorchester, WI 54425.



REPAIR PARTS: At the back of this manual is the repair parts section. All replacement parts are to be obtained from or ordered through your Meyer dealership. When ordering repair parts, refer to the parts section and give complete information including quantity, correct part number, detailed description and even Model No. and Serial No. of the grain kit which needs repair parts.

Manufacturer's Statement: Meyer Manufacturing Corporation reserves the right to make improvements in design, or changes in specifications at any time, without incurring any obligation to owners of units previously sold. This supersedes all previous published instructions.



TABLE OF CONTENTS

1.0	IMPORTANT INFORMATION	2
2.0	INTRODUCTION	3
3.0	SAFETY	7
3.1	SAFETY PRECAUTIONS	8
3.2	SAFETY SIGNS	10
3.3	SHUTOFF & LOCKOUT POWER	11
3.3.1	Shutoff & Lockout Power Recommendations	11
4.0	PRE-OPERATION	13
4.1	FALSE FRONT	13
4.2	REAR BELTING AND MAIN ROLLER SEAL COVER	15
4.3	MOUNT BRACKETS AND SEAL PLATES	17
4.4	GRAIN HOPPER INSTALLATION	19
4.4.1	Storing Stabilizing Legs	21
4.4.2	Installing The Flow Control	22
4.4.3	Plumbing The Flow Control	23
5.0	OPERATION	25
5.1	LOADING	25
6.0	MAINTENANCE	27
6.1	LUBRICATION	27
6.2	STORING THE GRAIN KIT	28
6.3	RETURNING THE GRAIN KIT TO SERVICE	28
6.4	REPLACEMENT PARTS	29
6.4.1	Shutoff & Lockout Power Recommendations	29
7.0	PARTS REPAIR AND REPLACEMENT	31
	RT / RTX GRAIN KIT	32
	RT / RTX FALSE FRONT	36
	RT - RTX GRAIN KIT HYDRAULICS	38
	MAINTENANCE RECORD	39



3.0 SAFETY

The Meyer Grain Kit is manufactured with operator safety in mind. Located on the grain kit are various safety signs to aid in operation and warn of danger or caution areas. Pay close attention to all safety signs on the grain kit.

Carefully follow the operating and maintenance instructions in this manual and all applicable safety laws. Failure to follow all safety procedures may result in serious injury or death.

Before attempting to operate this grain kit, read and study the following safety information. In addition, make sure that every individual who operates or works with the grain kit, whether family member or employee, is familiar with these safety precautions.

Meyer Mfg. Corp. provides guards for exposed moving parts for the operator's protection; however, some areas cannot be guarded or shielded in order to assure proper operation. The operator's manual and safety signs on the grain kit itself warn you of dangers and must be read and observed closely!

Safety Alert Symbol

This symbol is used to call attention to instructions concerning personal safety. Be sure to observe and follow these instructions. Take time to be careful!



The signal word **DANGER** on the machine and in the manual identifies a hazardous situation which, if not avoided, WILL result in death or serious injury.



The signal word **WARNING** on the machine and in the manual indicates a potentially hazardous situation which, if not avoided, COULD result in death or serious injury.



The signal word **CAUTION** on the machine and in the manual indicates a potentially hazardous situation which, if not avoided, MAY result in minor or moderate injury. It may also be used to alert against unsafe practices.



IMPORTANT

This notice identifies procedures which must be followed to avoid damage to the machine.

Danger, Warning, Caution, and instructional decals and plates are placed on the equipment to protect anyone working on or around this machine, as well as the components of the machine. All personnel operating or maintaining this equipment must familiarize themselves with all Danger, Warning, Caution, and instructional decals and plates.

3.1 SAFETY PRECAUTIONS



All individuals who will operate this Grain Kit must read and completely understand this Installation And Operator's Manual. Operator must have instructions before operating the machine. Untrained operators can cause injury or death.

- DO NOT allow anyone to install, operate, service, inspect or otherwise handle this grain kit until all operators have read and understand all of the instructional materials in this Installation And Operator's Manual and have been properly trained in its intended usage.
- For an operator to be qualified, he or she must not use drugs or alcohol which impair alertness or coordination while working. An operator who is taking prescription drugs must get medical advice to determine if he or she can safely operate a machine and the equipment.
- Make sure all personnel can READ and UNDERSTAND all safety signs.
- DO NOT allow minors (children) or inexperienced persons to operate this forage box or grain kit.
- DO NOT operate until all shields and guards are in place and securely fastened.
- DO NOT step up on any part of the grain kit at any time.
- DO NOT adjust, clean or lubricate while the grain kit is in motion.
- Inspect when first delivered and regularly thereafter; that all connections and bolts are tight and secure before operating.
- Know how to stop operation of the FORAGE BOX before starting it!
- Make certain everyone is clear of the FORAGE BOX before applying power.
- Keep hands, feet and clothing away from moving parts. Loose or floppy clothing should not be worn by the operator.
- Observe all applicable traffic laws when transporting on public roadways (where legal to do so). Check local laws for all highway lighting and marking requirements.
- Shut off and lock out power before adjusting, servicing, maintaining or clearing an obstruction from this machine. (See 3.3 SHUTOFF & LOCKOUT POWER on page 11.)
- Always enter curves or drive up or down hills at a low speed and at a gradual steering angle.
- Never allow riders on either tractor / truck or equipment.
- Stay away from overhead power lines. Electrocutation can occur without direct contact.
- Use only properly rated undercarriage and tires.

Safety Precautions For Installation:

- Use lifting equipment with sufficient capacity to handle this unit.
- Park the forage box on a stable, level ground and securely chock all wheels.
- Keep work area clean and free of oily or slippery materials to prevent slipping or falling while working on this equipment.
- Do not work under any machine on this unit.
- Wear head, eye, and foot protection.
- Keep your body away from potential pinch points during installation.
- Beware of heavy weights of components when handling them.
- Be sure that any component is well balanced and secured with adequate strength chains or lifting straps while lifting.

Safety Precautions For Truck Mounted Units:

- Comply with state and local laws governing highway safety and movement of machinery on roadways.

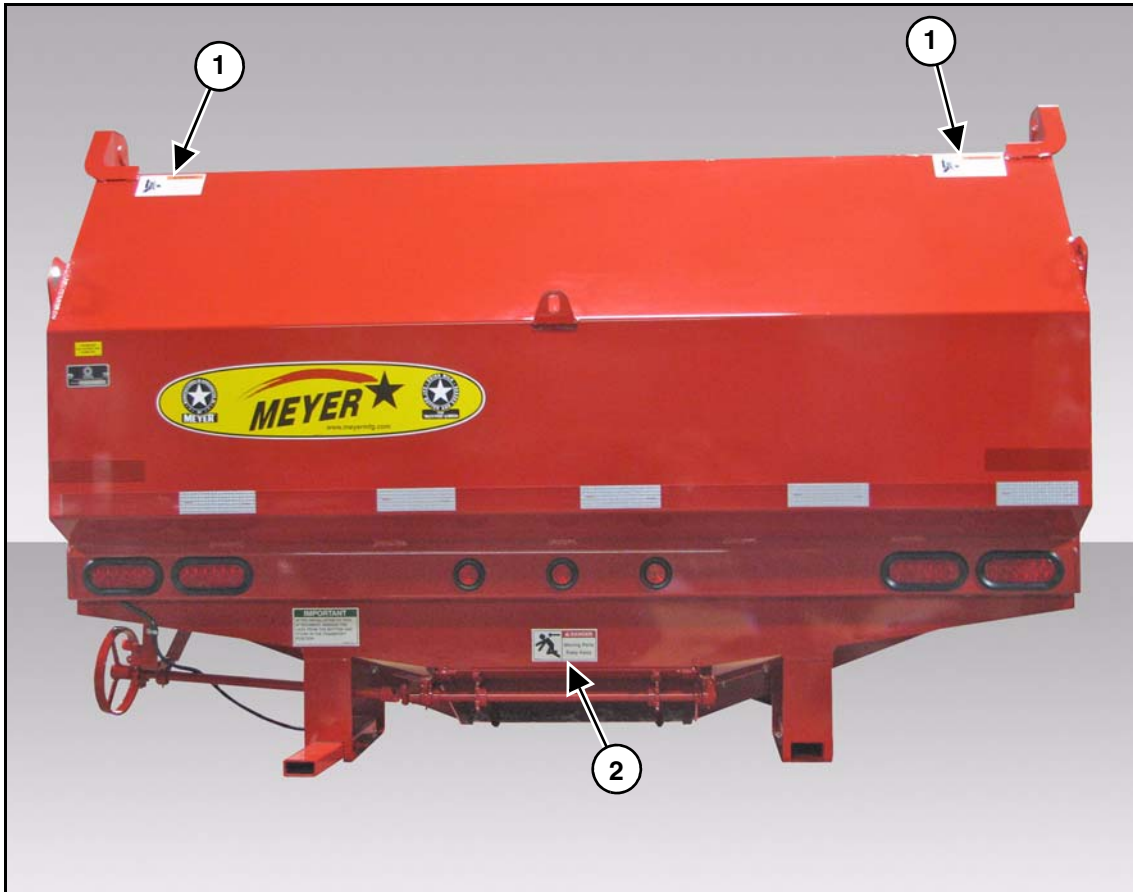
Safety Precautions For Hydraulic System:

- Check hydraulic tubes, hoses and fittings for damage and leakage. Never use hands to check for leaks. Hydraulic tubes and hoses must be properly routed and have adequate support and secure clamps. Tighten or replace any parts that show leakage.
- Always clean fluid spills. Do not use gasoline or diesel fuel for cleaning parts. Use commercial nonflammable solvents.

3.2 SAFETY SIGNS



Read all safety signs on the Grain Kit and in this manual. Keep all safety signs clean and replace any damaged or missing safety signs before operating the equipment. Do Not remove any safety signs. Safety signs are for operator protection and information.



PART NO. 46-8100-6



PART NO. 46-0001-20

3.3 SHUTOFF & LOCKOUT POWER

Any individual that will be adjusting, servicing, maintaining, or clearing an obstruction from this machine needs to ensure that this machine stays safely “OFF” until the adjustment, service, or maintenance has been completed, or when the obstruction has been cleared, and that all guards, shields, and covers have been restored to their original position. The safety of all individuals working on or around this machine, including family members, are affected. The following procedure will be referred to throughout this manual, so be familiar with the following steps.

3.3.1 Shutoff & Lockout Power Recommendations

1. Think, Plan and Check

- a. **Think** through the entire procedure and identify all the steps that are required.
- b. **Plan** what personnel will be involved, what needs to be shut down, what guards / shields need to be removed, and how the equipment will be restarted.
- c. **Check** the machine over to verify all power sources and stored energy have been identified including engines, hydraulic and pneumatic systems, springs and accumulators, and suspended loads.

2. **Communicate** - Inform everyone involved, including those working on or around this machine, that work is being done which involves keeping this machine safely “OFF”.

3. Power Sources

- a. **LOCKOUT** - Shut off engines and take the key, or physically lock the start/on switch or control. Disconnect any power sources which are meant to be disconnected (i.e. electrical, hydraulic, and PTO of pull-type units).
- b. **TAGOUT** - Place a tag on the machine noting the reason for the power source being tagged out and what work is being done. This is particularly important if the power source is not within your sight and/or will need to be isolated for a longer period of time.

4. **Stored Energy** - Neutralize all stored energy from its power source. Ensure that this machine is level, set the parking brake, and chock the wheels. Disconnect electricity, block moveable parts, release or block spring energy, release pressure from hydraulic and pneumatic lines, and lower suspended parts to a resting position.

5. **Test** - Do a complete test and personally double check all of the above steps to verify that all of the power sources are actually disconnected and locked out.

6. **Restore Power** - When the work has been completed, follow the same basic procedures, ensuring that all individuals working on or around this machine are safely clear of the machine before locks and tags are removed and power is restored.

IMPORTANT

It is important that everyone who works on this equipment is properly trained to help ensure that they are familiar with this procedure and that they follow the steps outlined above. This manual will remind you when to Shutoff & Lockout Power.



4.0 PRE-OPERATION

4.1 FALSE FRONT

For grain kit installation, skip to section 4.2.

STEP 1



Locate the second vertical upright from the front. Position the outside mount bracket (Item 1) flush with the bottom of the upright's rear face.

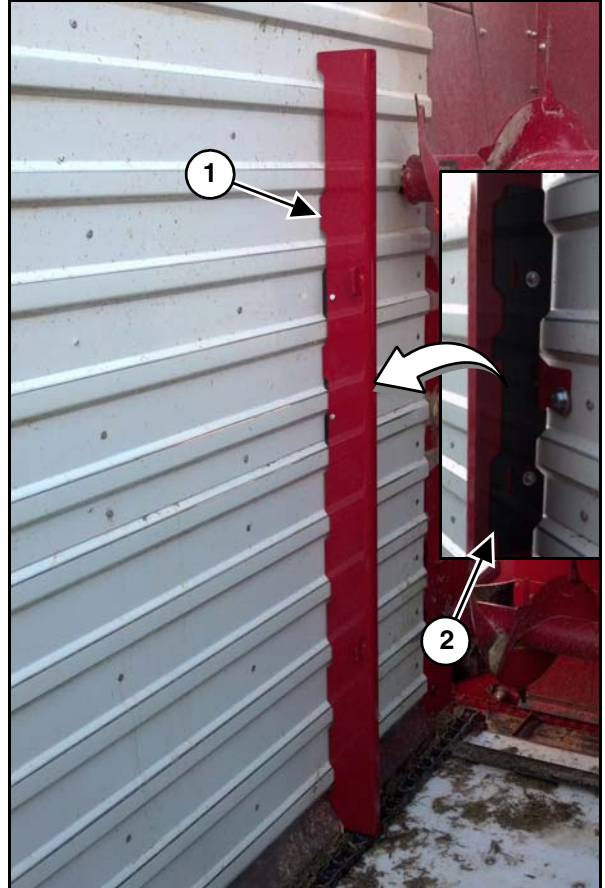
With the narrow edge against the upright and the holes closest to the edge on top, use the holes in the outside mount bracket as a guide.

NOTE: The left mount bracket is different from the right. (See RT / RTX FALSE FRONT on page 36.) for further clarification.

Use a 13/32" bit to drill all the way through the upright. Once all upright holes have been drilled put the bolts in back to front with a washer on the front side of the upright.

Drill the remaining holes through the ribbed side metal using a 1/2" drill bit.

STEP 2



Position the inner gate receiver bracket (Item 1) up against the ribbed metal and bolt in place using the holes drilled using the outside mount bracket.

Bolt from the inside out with a washer on the inside.

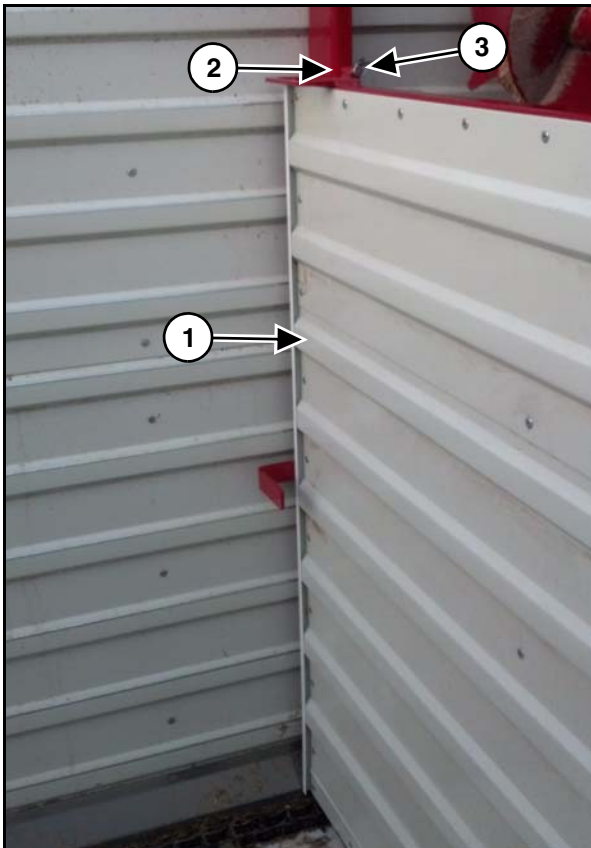
Before tightening, lift the receiver bracket up slightly to center between the small ribs in the side panels. Tighten up firmly.

NOTE: The hooks on the receiver brackets must be facing rearward. Do the same to both sides.

Add the gap seal brackets (Item 2) that only fit one way with narrow rib located in the side metal overlap.

Continue the following steps to install the false front to the forage box:

STEP 3



Once the left and right receiver brackets are mounted into place the false front gate can be installed.

Simply hang the gate onto the hooks on the receiver brackets.

Force the gate (Item 1) downward until the sleeves (Item 2) on the upper top two corners line up with the slots in the brackets.

Install the lynch pin (Item 3) as shown.

NOTE: Gate and receivers must be removed when unloading forage other than grains out of the rear of the forage box! Do not unload out of the front with gate in forage box!

When the False Front Gate and mounting brackets have been removed, reinstall the 1/2" bolts to fill the holes.

4.2 REAR BELTING AND MAIN ROLLER SEAL COVER

Use the following 4 steps to install the rear belting and main roller seal cover to the forage box:

STEP 1



Run the main apron chain until the chain slats are lined up above the rear main roller assembly.

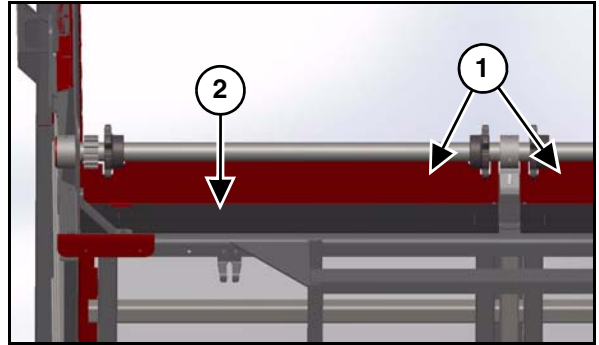
Shutoff and lockout power. Safely and securely prop the rear gate open.

Loosen the tension on the apron chains. Locate the apron tensioners towards the middle of the forage box, underneath the box frame. There is one located on the right side of the box for the right apron chain, and likewise for the left side.

Carefully turn the locking nut off and then remove the nut, washer, and spring and set aside. Repeat the above step again for the second apron.

Once you have loosened each apron chain, pull the apron chain away from the rear sprockets so you have room to fit your new seal pieces.

STEP 2



Take the two formed sheet metal pieces (Item 1), one for the left apron chain, and one for the right apron chain. They are notched so that only one piece will work for the left, and the other will fit on the right side.

Locate the left apron piece and insert it around the apron chain to fit up underneath the white poly floor. The holes in the metal piece should line up with the holes in the welded metal strip that was used to attach the rubber belting (Item 2). The precut holes along the bent edge of the seal metal pieces should line up to the holes in the poly floor support bracket.

Repeat the above step to insert the right apron floor seal underneath the poly floor.

Continue the following steps to install the rear belting and main roller seal cover to the forage box:

STEP 3



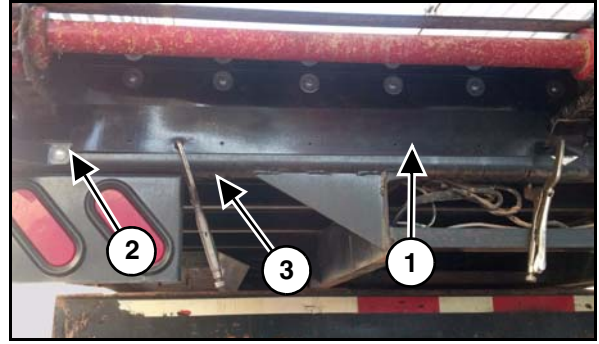
Match the notches in the belting to the main apron chain with the narrow notches towards the center of the box and the shiny side of the belting will be facing to the rear of the box. Lower the notches down so they just clear the chain and clamp in place. Bolt the belting in place using 1/4" x 3/4" machine bolts, 1/4" fender washers and 1/4" spin locknuts.

The bolts will go through the belting, the holes in the new metal piece, and then through the welded metal strip. The fender washers will still be up against the belting strip, and the nuts will be on the backside of the welded metal strip. Tighten down securely.

Retighten both apron chains. See your Owner's Manual in the Adjustments Section for proper chain tightening, or go to our website www.meyermfg.com and look for your model on the Manual page.

Remove zip ties holding the tail light wire harness (Item 1) in the lower formed channel.

STEP 4



Once the main apron chains have been retightened, position the remaining two rear belting pieces (Item 1) with shiny side of the belting facing to the rear of the box.

The belting will only fit one way with the bearing support bracket notch (Item 2) in the belting.

Clamp the belting on 1-1/2" from the bottom of the belting to the bottom of the lower formed bracket (Item 3).

After making sure all wires have been moved and clear of drill holes, drill through the lower formed bracket using a 9/32" drill bit.

Tuck the wires back into the lower formed support and slide the provided zip ties under the belting to secure the wire harness.

4.3 MOUNT BRACKETS AND SEAL PLATES

Use the following step to install the mount brackets and seal plates to the forage box:

STEP 1



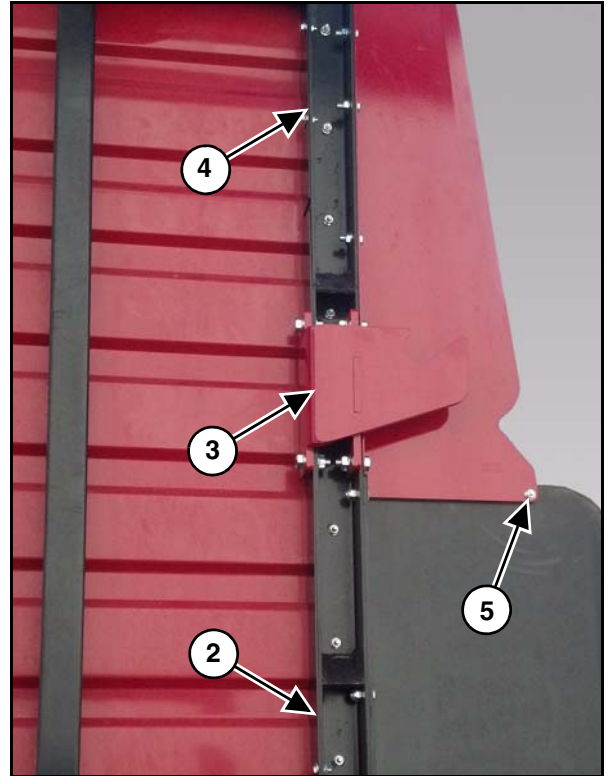
Loosely attach the rear gusset plates (Item 1) with bolts going in back to front while leaving the two bottom bolt holes empty.

If the box has a gate delay system on it, remove the loom clamp from the front side of the rear right upright and drill the hole in the seal plate to re-install the loom clamp.

Attach rear seal plates (Item 2) on the front side of the rear upright. Longer seal plate on the bottom and short one on top.

Bolts should go in front to back.

Install the grain kit receiver (Item 3) while attaching the lower seal plates on either side.



CAUTION

Tarp system spool contains stored energy.

If the box has a tarp system on, release tension, loosen the second to back left upright spool support bolts and remove the bolts attaching it to the rear left upright.

Slide the bracket forward to place the top left rear seal plate (Item 4) underneath the bracket.

If the spool support bracket does not slide far enough forward, remove bracket and die grind holes to allow the bracket to move forward. Tighten all bolts.

Drill the hole in the rear main apron bearing plates for the rear gusset plates and install carriage bolt (Item 5) from inside the box to out.

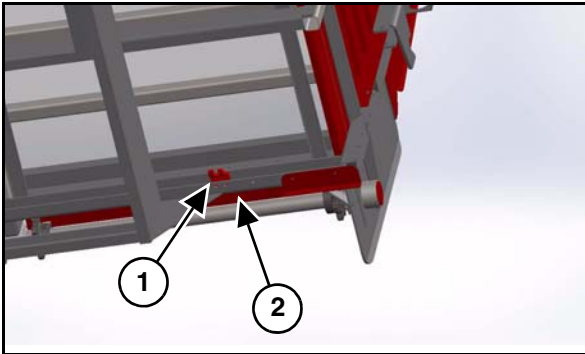
Check door clearance.

If door is pinched, slightly loosen the bolts to the rear gusset plates and tap the plates out.

Continue the following steps to install the mount brackets and seal plates to the forage box:

See Section 4.4 steps 1-4 to install grain hopper for steps 3-4.

STEP 2

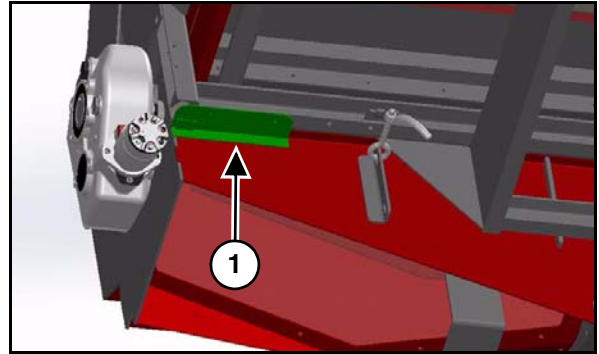


Install the two lower grain kit mount brackets (Item 1) using the four existing holes, two on either side, in the rear lower formed support (Item 2).

NOTE: It is recommended, for proper fit, to install the grain kit before installing the seal plates in steps 3 and 4.

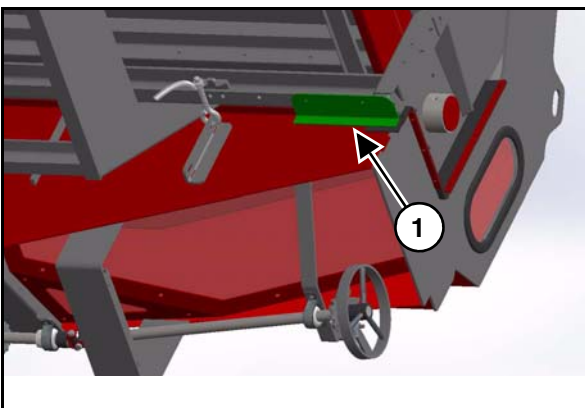
NOTE: For truck mount applications you will have to remove the lower light brackets to install the seal plates in steps 3 and 4. Reinstall the light brackets over the seal plates.

STEP 4



The lower right seal plate has a welded piece attached to it. With the grain kit attached install the bracket as shown above. With the welded tab covering the gap drill both holes and attach with provided hardware.

STEP 3

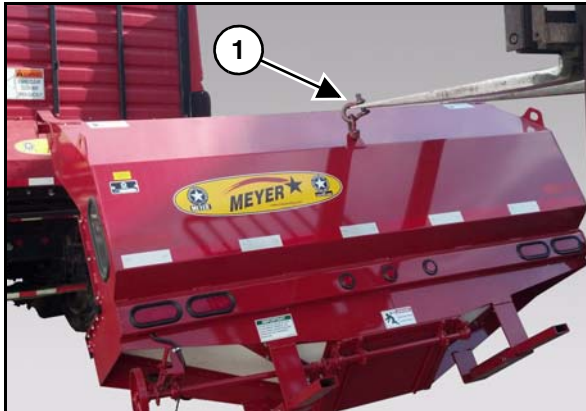


To install the lower left seal plate (Item 1), first locate the formed piece without the welded piece. With the grain kit attached place the seal plate in position as shown above. Once the seal plate is flush with the upright drill both holes and attach with provided hardware.

4.4 GRAIN HOPPER INSTALLATION

Use the following 5 steps to install the grain hopper to the forage box:

STEP 1



NOTE: Use a lifting device and chains that are in good condition and of adequate size to lift the grain hopper.

Position the hook (Item 1) so it lifts from the lifting loop at the center of the grain hopper. Lift the grain hopper from the ground and position the grain hopper at the rear of the forage box.



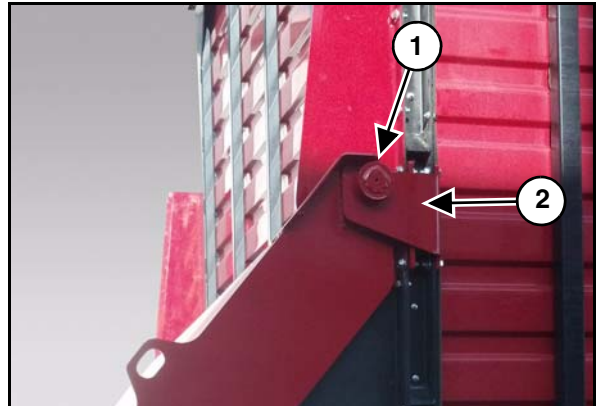
WARNING



Crushing Hazard

Do Not work under suspended or blocked parts.

STEP 2



Raise the grain hopper until the grain hopper hanger mounts (Item 1) are aligned with the forage box receivers (Item 2) on both sides.

Slightly lower the grain hopper and verify the grain hopper hanger mounts have properly seated into the receivers on the forage box.

Continue the following steps to install the grain hopper to the forage box:

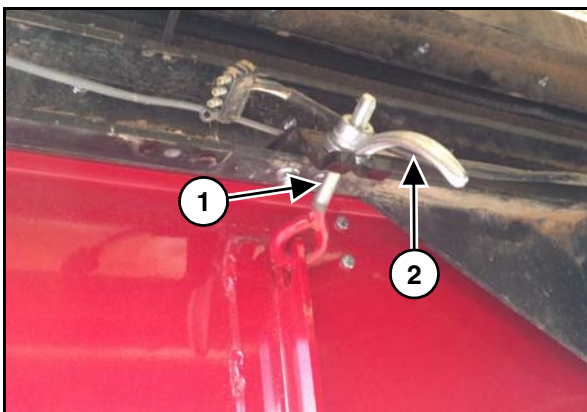
STEP 3



Push down and inward on the back of the grain hopper (Item 1) until the grain hopper bottoms out to the rear frame plate of the forage box.

NOTE: Most of the under carriage has been removed for picture clarity.

STEP 4



After the grain hopper is in place, install the eyebolt (Item 1) into the slot on the forage box frame.

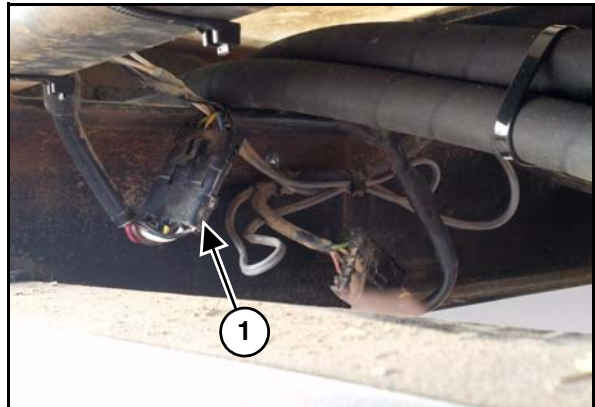
Tighten the handle nut (Item 2).

IMPORTANT

Make sure the handle is pointing down to prevent contact with the main apron chain.

Repeat procedure on opposite side.

STEP 5



Locate the electrical connection inside the frame rail. If you have a pull-type unit find the connection behind the Converter module. Take the Y-harness from the kit and install the single leg to the front of the box and one of the Y-legs of the harness to the rear harness. Take the 2nd leg of the Y and install the grain kit light harness. Secure any excess wire or cable.

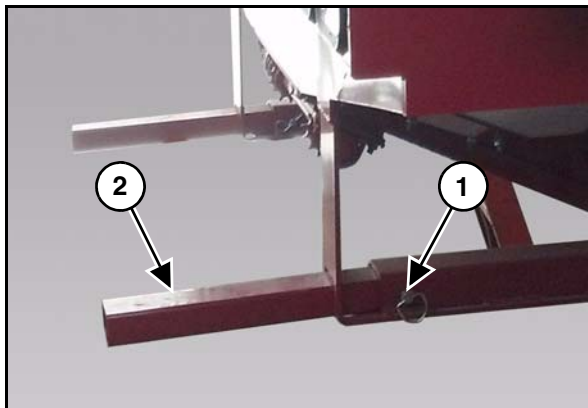
CAUTION

Your Stop / Tail / Turn lights may not function correctly if not installed properly. Check your lights to make sure all lights operate properly when connecting or disconnecting this plug (Item 1).

4.4.1 Storing Stabilizing Legs

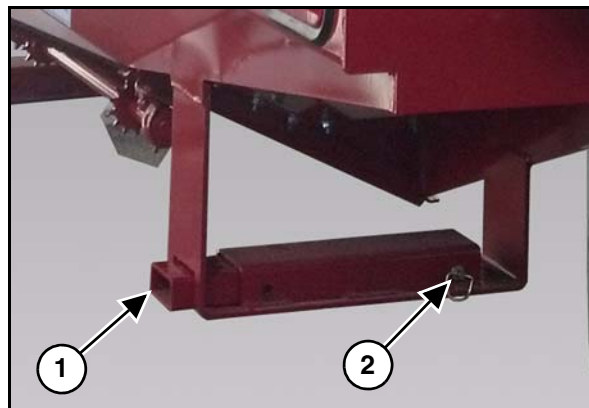
Use the following 2 steps to place the stabilizing legs into the storage location:

STEP 1



Remove the retaining pin (Item 1) for the stabilizing leg (Item 2).

STEP 2



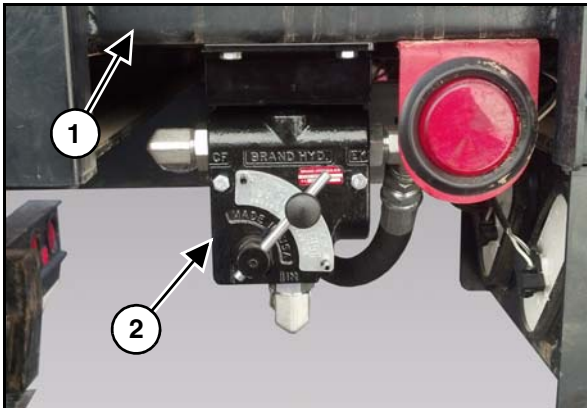
Push the stabilizing leg (Item 1) into the storage position and install the retaining pin (Item 2).

Repeat procedure for the other stabilizing leg.

4.4.2 Installing The Flow Control

Use the following step to install the flow control:

STEP 1



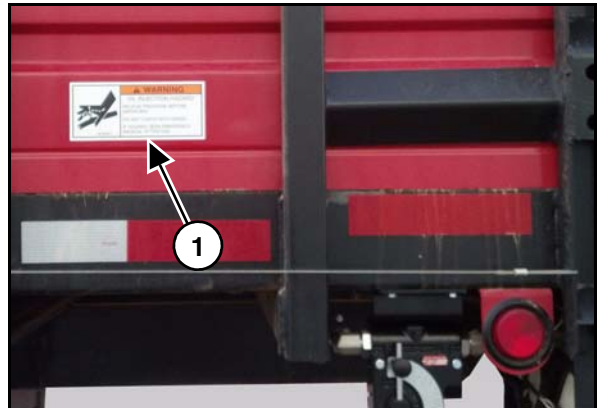
When facing the forage box from the left rear side, locate the formed angle (Item 1). Center the flow control (Item 2) between the 1st and 2nd forage box uprights from the rear of the forage box.

Fit the mounting plate under the formed floor support. Drill $13/32$ " holes and bolt the mounting plate to the angle with $3/8$ " x 1" bolts and $3/8$ " lock-nuts. Mount the flow control to the mounting plate with $1/4$ " x 2-1/2" bolts and $1/4$ " lock-nuts.

For hydraulic hookup (See 4.4.3 Plumbing The Flow Control on page 23.).

Once it is hooked up use the provided zip ties to secure all three hoses down to prevent contact with main apron chain.

STEP 2

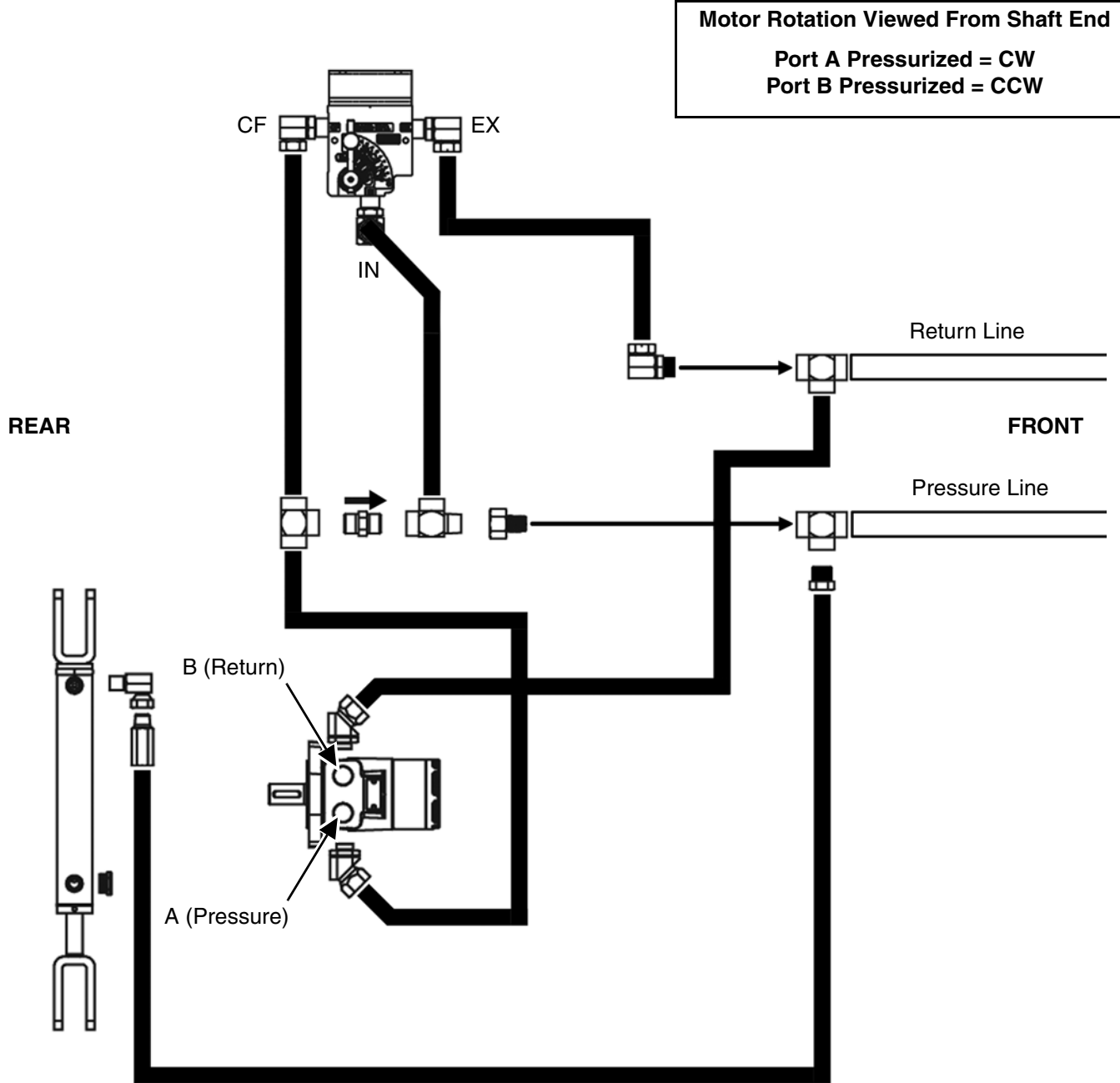


Install the provided Warning Oil Injection Hazard decal (Item 1) to the side of the box as shown above.

4.4.3 Plumbing The Flow Control

Use the following schematic to plumb the flow control:

SINGLE DRIVE FLOW CONTROL SYSTEM





5.0 OPERATION



DO NOT allow anyone to operate, service, inspect or otherwise handle this forage box until all operators have read and understand all of the instructional materials in this supplement manual and the forage box Owner's Operator's Manual and have been properly trained in its intended usage.

Before operating the forage box, look in all directions and make sure no bystanders, especially small children are in the work area.

Do not climb or step on any part of the grain kit at any time.



Do not overload the machine.

5.1 LOADING



Shutoff and lockout power before adjusting, servicing, maintaining, or clearing an obstruction from this machine. Failure to heed may result in serious personal injury or death.

IMPORTANT

Overloading may cause failure of axles, tires, structural members, hitches, loss of vehicle control. **DO NOT** exceed maximum gross weight.

IMPORTANT

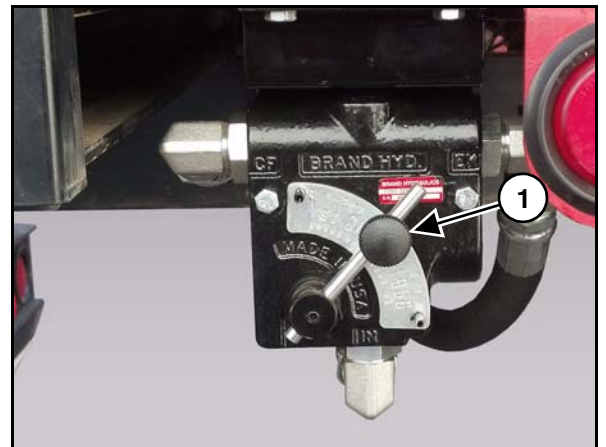
Filling the forage box evenly from the front to rear will ensure there is downward force on the tractor hitch and provide traction for the tractor wheels.

NOTE: Heaping material over the sides of the box will add a significant amount of weight to the load.

NOTE: Overloading can have detrimental effects on the integrity of the implement and it's safe use. Some materials such as soybeans may not be able to be filled to struck level. Overloading will void warranty and increase risk to the operator's safety. Always be aware of your gross weight.

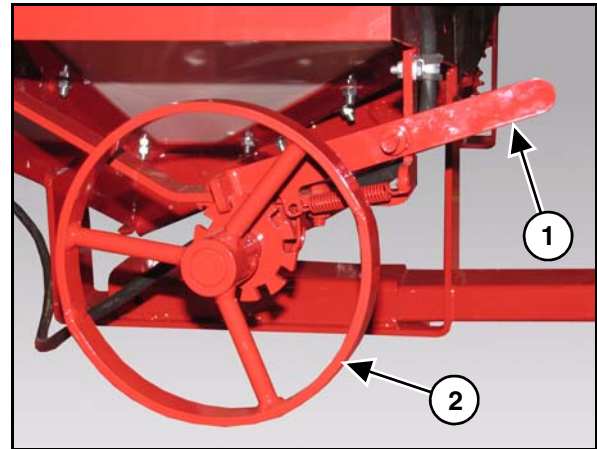
Set the flow control (Item 1) to 0 position.

NOTE: Picture is showing control at approximately half flow.



Disengage the latch (Item 1) on the turn wheel (Item 2). Open the grain hopper unloading door with the turn wheel.

Engage the hydraulics on the unit. Slowly open the flow control to start apron movement and to open the rear vertical door. Regulate the level of grain in the hopper by using the flow control to slow down, stop, or speed up the apron chain.



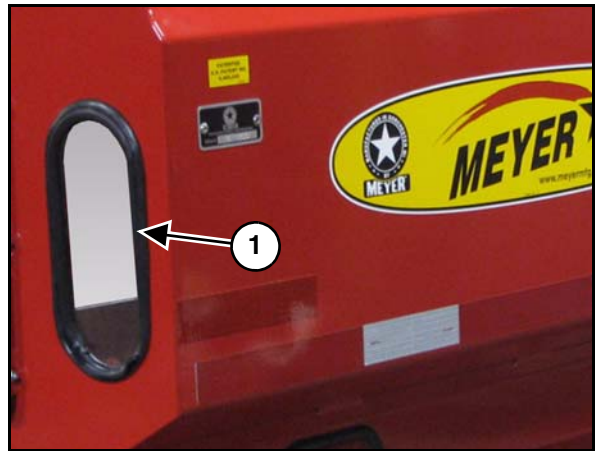
The grain kit plexi-glass window (Item 1) will give you visibility of the grain level.

NOTE: The grain level should always be lower than the return apron chain to minimize carry back and spillage under the box.

As the box gets empty, increase the speed on the flow control to finish unloading. After grain is completely unloaded, the rear vertical gate will go back to the closed position.

Turn the flow control back to the 0 position and shut down the hydraulics.

Close the grain kit unloading door, and engage the latch on the turn wheel.



6.0 MAINTENANCE

6.1 LUBRICATION



CAUTION

SHUTOFF & LOCKOUT POWER before adjusting, cleaning, lubricating or servicing the machine. (See 3.3 SHUTOFF & LOCKOUT POWER on page 11.)

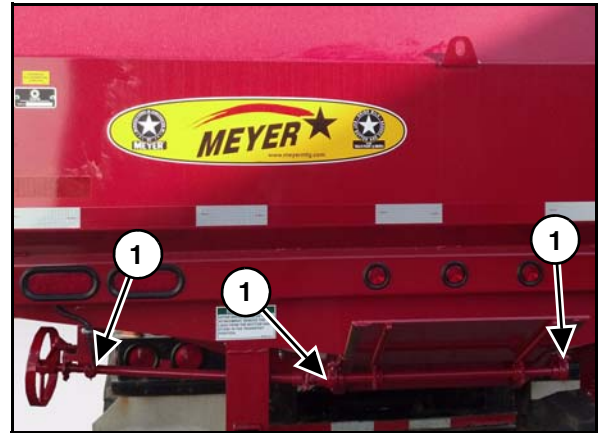
IMPORTANT

Fluid such as hydraulic fluid, grease, etc. must be disposed of in an environmentally safe manner. Some regulations require that certain spills and leaks on the ground must be cleaned in a specific manner. See local, state and federal regulations for the correct disposal.

DAILY or every **8-10** loads:

NOTE: Always use a good quality lithium base grease when lubricating the grain kit.

- Grease the three (3) bearings (Item 1).
- Apply oil to the door slide gate and inspect components for wear or damage. Repair and replace components as necessary.



6.2 STORING THE GRAIN KIT

LOCKOUT / TAGOUT the machine / forage box. (See 3.3 SHUTOFF & LOCKOUT POWER on page 11.)

Sometimes it may be necessary to store your Meyer grain kit for an extended period of time. Below is a list of items to perform before storage.

- Fully clean out all forage or grain from the grain kit. (See 5.0 OPERATION on page 25.)
- Thoroughly clean the equipment.
- Lubricate the equipment. (See 6.1 LUBRICATION on page 27.)
- Apply oil to the sliding door and inspect all grain kit components for wear or damage. Repair and replace components as necessary.
- Make appropriate adjustments to equipment.
- Inspect all welds on the equipment for wear and damage.
- Check for loose hardware, missing guards, or damaged parts.
- Check for damaged or missing safety signs (decals). Replace if necessary.
- Replace worn or damaged parts.
- Touch up all paint nicks and scratches to prevent rusting.
- Place the equipment in a dry protected shelter.
- Place the equipment flat on the ground.

6.3 RETURNING THE GRAIN KIT TO SERVICE

After the Meyer grain kit has been in storage, it is necessary to follow a list of items to return the equipment to service.

- Be sure all shields and guards are in place.
- Lubricate the equipment.
- Verify all functions operate correctly.
- Check for any damaged parts. Repair as needed.
- Install onto forage box.

6.4 REPLACEMENT PARTS



WARNING

Before servicing this equipment, insure that all personnel, including family members are familiar with the equipment and the safety hazards that are present, along with the safety practices that should be observed while working in this equipment.



CAUTION

Inspect the chassis' axles, o-beams, spindles, tires, hitches & all safety shielding, safety signs and safety lighting regularly. These parts if not watched closely, could pose potential injury or death. If any part is found in need of repair, follow the SHUTOFF & LOCKOUT POWER recommendations and have qualified personnel repair immediately.

Any individual that will be adjusting, servicing, maintaining, or clearing an obstruction from this machine needs to ensure that this machine stays safely "OFF" until the adjustment, service, or maintenance has been completed, or when the obstruction has been cleared, and that all guards, shields, and covers have been restored to their original position. The safety of all individuals working on or around this machine, including family members, are affected. The following procedure will be referred to throughout this manual, so be familiar with the following steps.

6.4.1 Shutoff & Lockout Power Recommendations

1. Think, Plan and Check

- a. **Think** through the entire procedure and identify all the steps that are required.
- b. **Plan** what personnel will be involved, what needs to be shut down, what guards / shields need to be removed, and how the equipment will be restarted.
- c. **Check** the machine over to verify all power sources and stored energy have been identified including engines, hydraulic and pneumatic systems, springs and accumulators, and suspended loads.

2. **Communicate** - Inform everyone involved, including those working on or around this machine, that work is being done which involves keeping this machine safely "OFF".

3. Power Sources

- a. **LOCKOUT** - Shut off engines and take the key, or physically lock the start/on switch or control. Disconnect any power sources which are meant to be disconnected (i.e. electrical, hydraulic, and PTO of pull-type units).
- b. **TAGOUT** - Place a tag on the machine noting the reason for the power source being tagged out and what work is being done. This is particularly important if the power source is not within your sight and/or will need to be isolated for a longer period of time.

4. **Stored Energy** - Neutralize all stored energy from its power source. Ensure that this machine is level, set the parking brake, and chock the wheels. Disconnect electricity, block moveable parts, release or block spring energy, release pressure from hydraulic and pneumatic lines, and lower suspended parts to a resting position.

5. **Test** - Do a complete test and personally double check all of the above steps to verify that all of the power sources are actually disconnected and locked out.

6. **Restore Power** - When the work has been completed, follow the same basic procedures, ensuring that all individuals working on or around this machine are safely clear of the machine before locks and tags are removed and power is restored.

IMPORTANT

It is important that everyone who works on this equipment is properly trained to help ensure that they are familiar with this procedure and that they follow the steps outlined above. This manual will remind you when to **Shutoff & Lockout Power**.

At times parts on this implement will become worn or damaged. Performing repairs on this implement can pose a risk of injury including death. To reduce risk, the party that will be doing the repair should be very knowledgeable of the implement and the equipment that they will be using to do the repair.

- Review the repair so that a plan can be put together and the proper equipment can be used to repair this implement safely and correctly.
- Personal safety equipment may include items such as safety glasses, protective footwear, hearing protection, gloves, fire retardant clothes, etc.



WARNING

Crushing Hazard

Do Not work under suspended or blocked parts.



- The use of hoists and/or supports may be needed to handle heavy components.
- If the implement is being repaired in the field, make sure the parking brake of the tractor is engaged, the implement is on solid and level ground.
- Welding and torching should be done by properly trained individuals who have proven their skills.

IMPORTANT

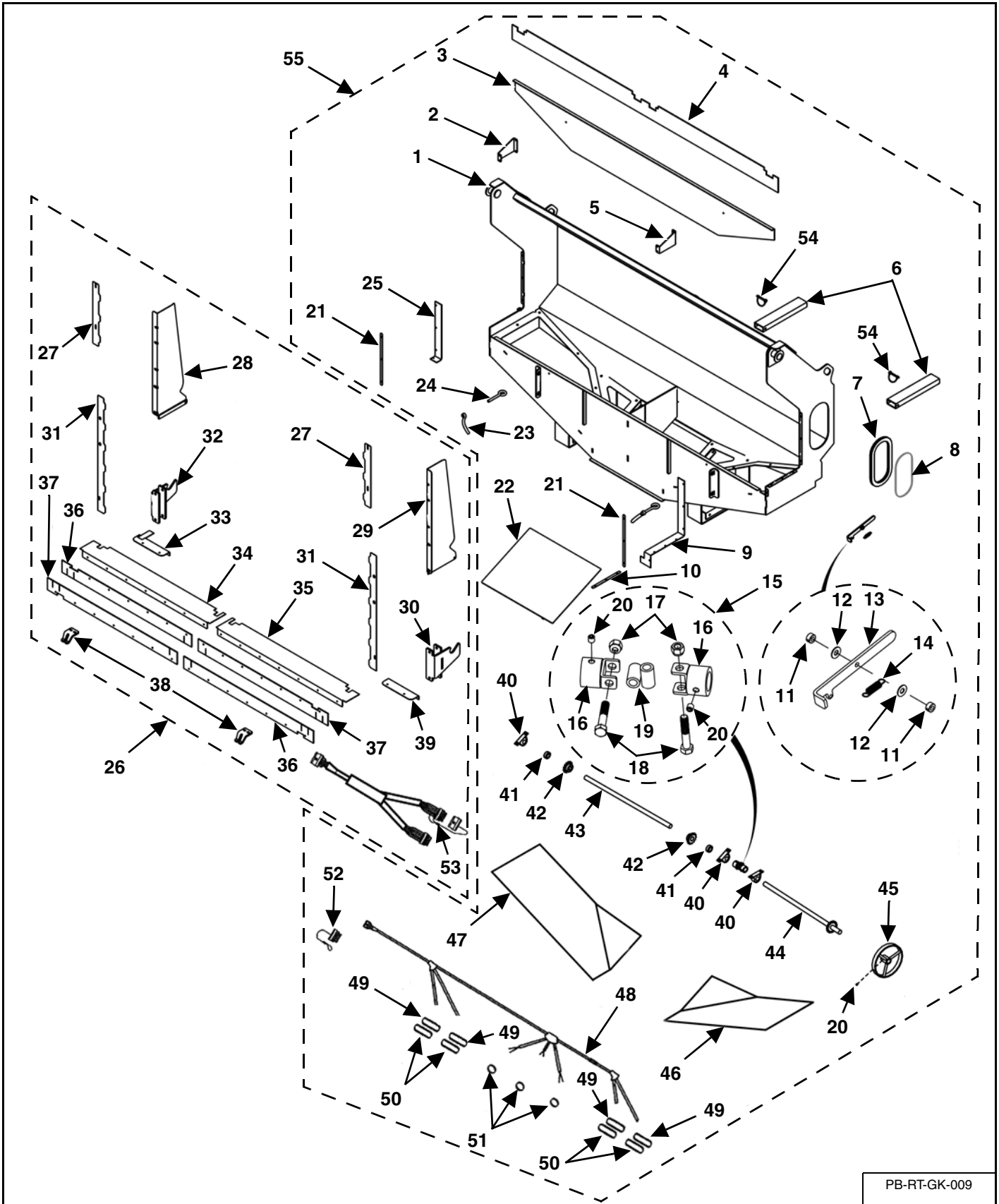
Call the factory for any additional details you may need to perform the repair. Some parts may come with instruction sheets to assist in the repair. Instructions sheets may be provided with your parts order. Otherwise, if available, instruction sheets can be e-mailed or faxed for your convenience. Call Meyer Manufacturing toll free at 1-800-325-9103 or email sales@meyermfg.com.

NOTE: Be environmentally friendly and dispose of any waste materials properly. Recycle when appropriate.

7.0 PARTS REPAIR AND REPLACEMENT



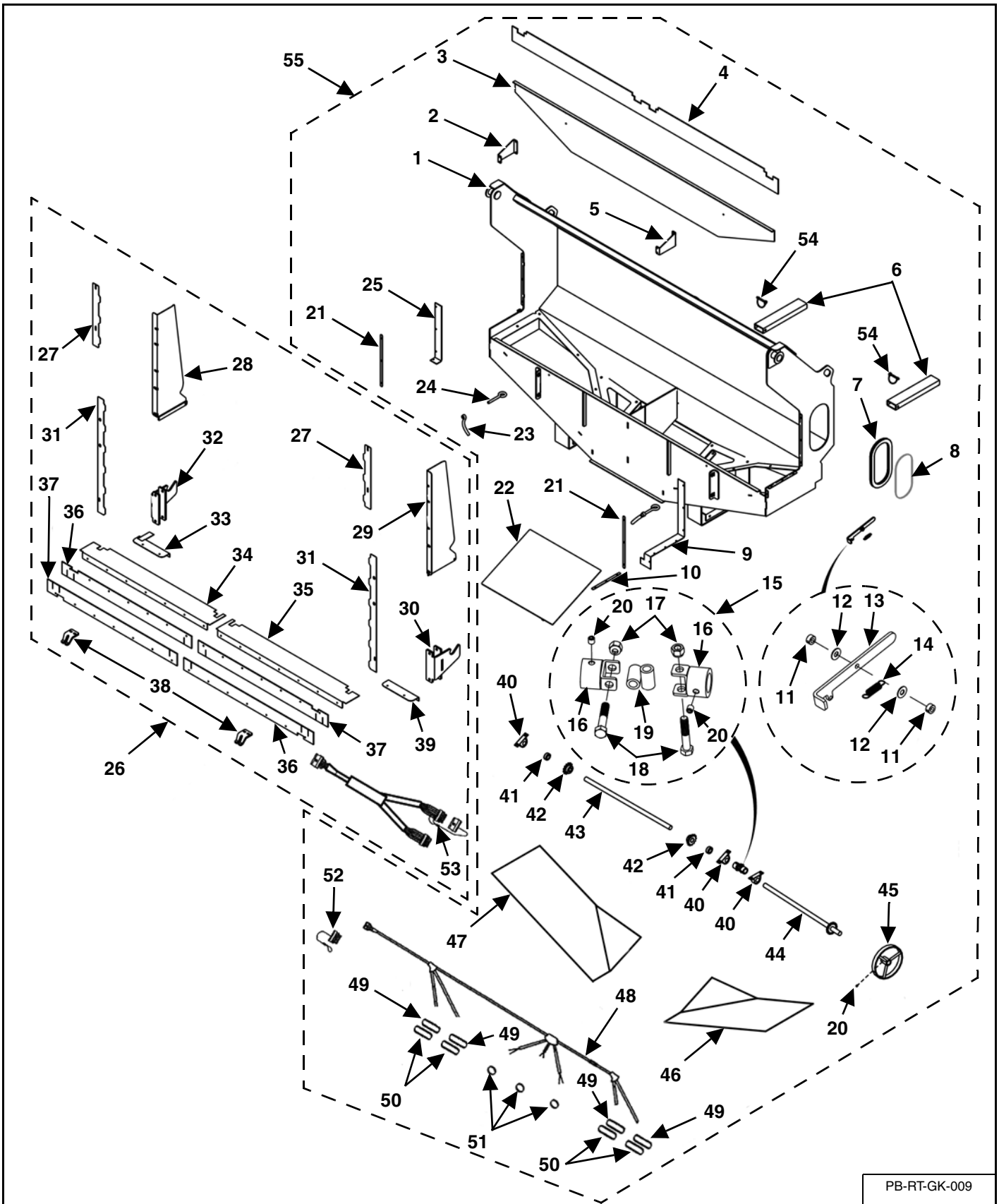
RT / RTX GRAIN KIT



PB-RT-GK-009

KEY	PART NUMBER	QTY	DESCRIPTION
1	400-1621-1	1	Main Body Weldment
2	400-1600-4	1	Center Divider Mount Bracket
3	400-1621-2	1	Center Divider
4	49-0303	1	Center Divider Belting
5	400-1600-5	1	Center Divider Mount Bracket
6	100-8180-5-2	2	Stabilizing Leg
7	33-0054	2.65	Self Seal One-Piece Weather Strip (Per Foot)
8	49-0310	1	Plexiglass Window
9	49-0315	1	Seal
10	400-1621-6	1	Seal Mount
11	14-0036	2	Lock Collar
12	805-0038-Z	2	3/8" Zinc Flat Washer
13	400-1614	1	Door Handle
14	29-0015	1	Spring
15	15-0006	1	Universal Joint
16	15-0006-2	2	Universal Joint Sleeve
17	815-3816-Z	2	3/8-16 Nylon Insert Lock Nut
18	851-3816-2Z	2	3/8-16 x 2" Machine Bolt
19	15-0006-1	1	Universal Joint Knuckle
20	827-3118-.38	3	5/16-18 x 3/8" Set Screw
21	400-1621-5	2	Seal Mount
22	625-0023-2	1	Gate
23	33-0028	2	1/2-13 Handle Nut
24	811-5013-4Z	2	1/2-13 x 4" Zinc Eyebolt
25	49-0316	1	Seal
26	RTX-GK-HDW	1	RT/RTX Grain Kit Hardware Package
27	400-1605	2	Rear Form Upright Cover-Upper
28	400-1601	1	Right Side Panel Gusset Weldment
29	400-1602	1	Left Side Panel Gusset Weldment
30	400-1607	1	Left Top Pivot Mount Bracket Weldment
31	400-1604	2	Rear Form Upright Cover-Lower
32	400-1603	1	Right Top Pivot Mount Bracket Weldment
33	400-1621-8	1	Seal Weldment
34	400-1608-1	1	Floor Seal Plate-Right
35	400-1606-1	1	Floor Seal Plate-Left
36	49-0304	2	Belting
37	49-0305	2	Belting
38	400-1609-1	2	Mount Bracket
39	400-1621-7	1	Seal
40	124	3	1" Pillow Block
41	323	2	1" Lock Collar
42	10-0001	2	1/4" Keyway Sprocket
43	23-0315	1	Gate Shaft

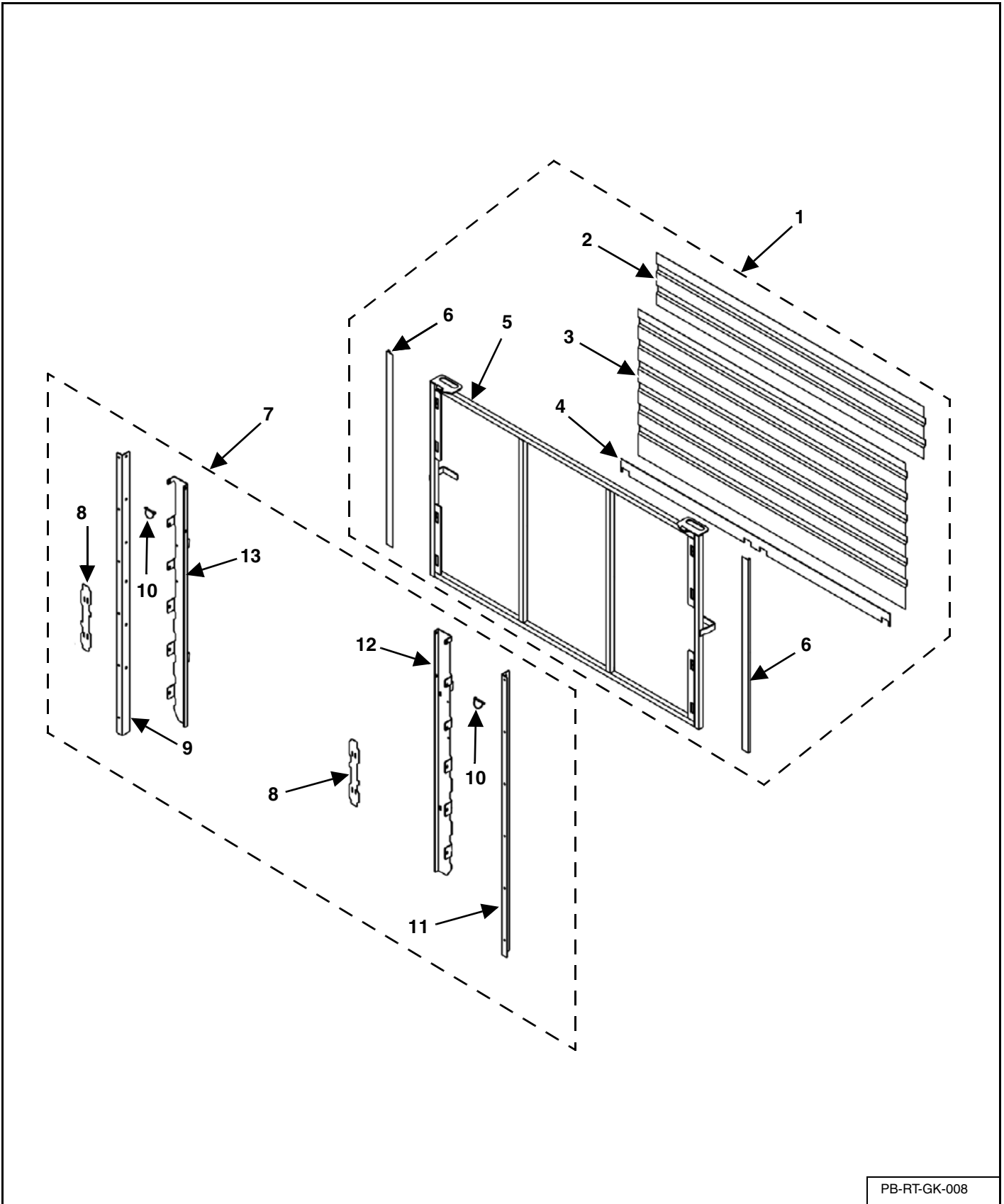
RT / RTX GRAIN KIT (CONT'D)



PB-RT-GK-009

KEY	PART NUMBER	QTY	DESCRIPTION
44	400-1613	1	Door Rod Weldment
45	25-8062	1	Door Handle
46	400-1621-3	1	Poly Floor-Left
47	400-1621-4	1	Poly Floor-Right
48	56-0102	1	Lower Light LED Light Harness
49	56-0082	4	Oval Grommet
50	56-0115	2/4	6" Oval Red LED
	56-0081	2/0	6" Oval Amber LED
51	56-0070-LED	3	Clearance Light 2" Red With Grommet
	56-0070-2	3	2" Round Grommet
52	56-0103-1	1	Harness 6-Pin Plug, Male With Lanyard And Crimp
53	56-0103	1	Y-Harness For Lights
54	32-0040	2	3/8" x 4" Hitch Pin Yellow Zinc With Clip

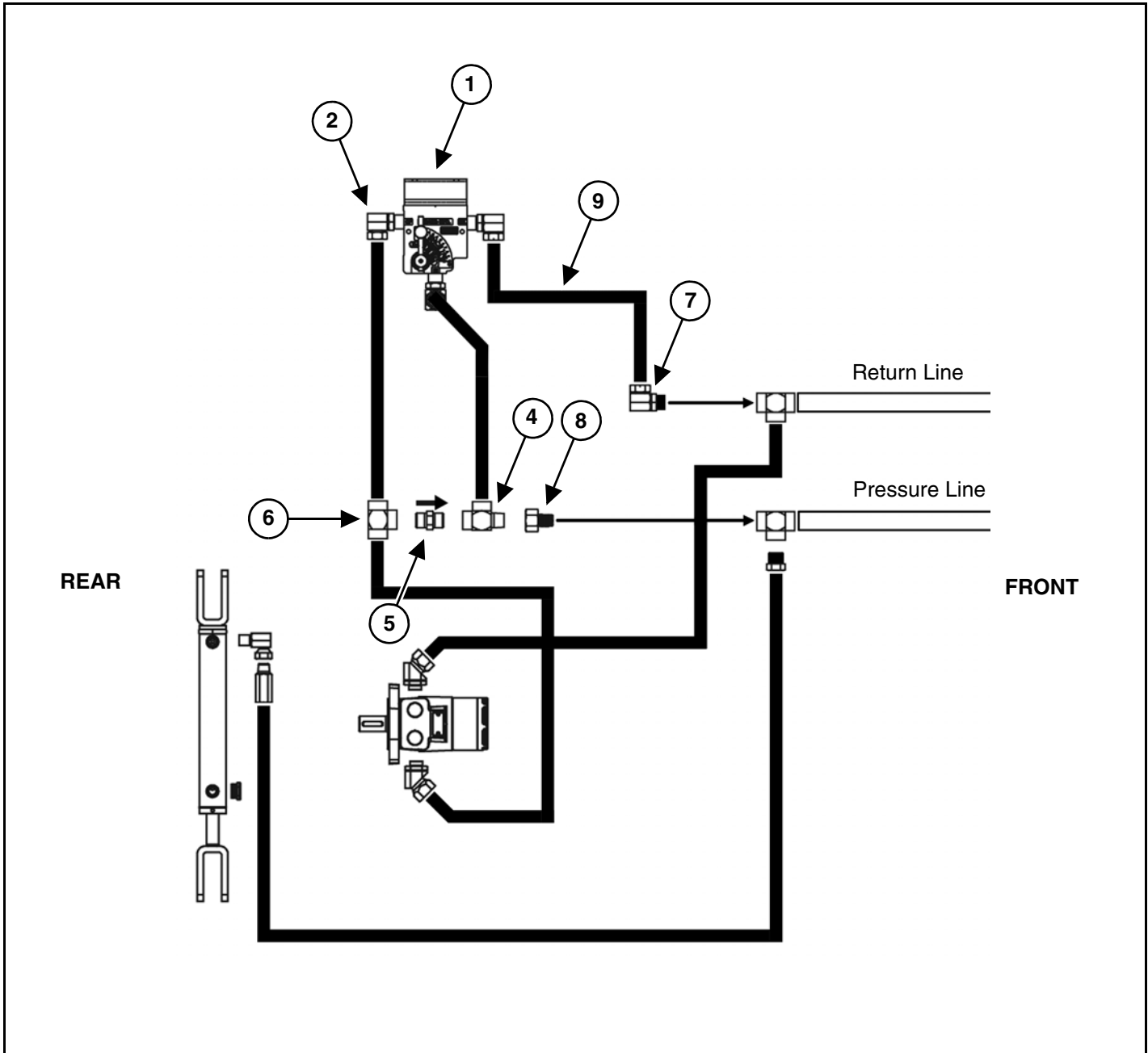
RT / RTX FALSE FRONT



PB-RT-GK-008

KEY	PART NUMBER	QTY	DESCRIPTION
1	400-1612	1	Complete False Front Gate
2	400-1612-2	1	14.5" x 86" Painted Metal Panel
3	761II-40.75-86	1	40.75" x 86" Painted Metal Panel
4	49-0308	1	Bottom Seal Belting
5	400-1612-1	1	Gate Welded
6	25-6050-4	2	End Cap Trim 53-3/4" Long
7	RTX-GKR-FFP-HDW	1	RT/RTX False Front Gate Hardware Package
8	400-1622	2	Front Formed Cover-Upper
9	400-1616	1	Right False Gate Mount
10	823-0004	2	Snap Pin
11	400-1615	1	Left False Gate Mount
12	400-1611	1	Left Mount Bracket
13	400-1610	1	Right Mount Bracket

RT - RTX GRAIN KIT HYDRAULICS



KEY	PART NUMBER	QTY	DESCRIPTION
1	25-0857	1	Flow Control Mount Bracket
2	155-6901-12-12	3	90 Degree ORB Bulkhead Adapter
3	55-0076-SAE	1	Flow Control SAE 12
4	155-5602-12-12-12	1	Service Tee
5	155-CV-1906P	1	Inline Check Valve
6	55-0079	1	3/4" Tee
7	55-0082	1	90 Degree Street Elbow
8	155-5405-08-12	1	Pipe Expansion Coupling
9	655-0023	3	3/4" x 54" Hose



Meyer Manufacturing Corporation

574 West Center Avenue
Dorchester, WI 54425
Phone: 1-800-325-9103
Fax: 715-654-5513
Email: sales@meyermfg.com
Website: www.meyermfg.com