



Patent  
6,996,935  
7,293,817  
7,631,459



## RT SERIES

RT116 • RT118 • RT120 • RT122 • RT124



2016 Model Year And Later  
**Owner / Operator's Manual**  
&  
**Parts Book**



# 1.0 IMPORTANT INFORMATION

The serial number plate is located on the front left upright.

Please enter the model, serial number and additional information in the space provided for future reference.



Serial Number Plate

Model No. \_\_\_\_\_

Serial No. \_\_\_\_\_

Date of Purchase \_\_\_\_\_

Dealership \_\_\_\_\_

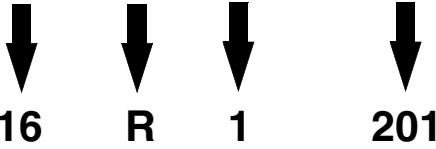
Dealership Phone No. \_\_\_\_\_

Always use your serial number when requesting information or when ordering parts.

## HOW TO READ YOUR SERIAL NUMBER

EXAMPLE: 16R1201

Model Year / RT / Model / Sequence Of Build



Meyer Manufacturing Corporation  
674 W. Business Cty Rd A  
Dorchester, WI 54425  
Phone: 1-800-325-9103  
Fax: 715-654-5513  
Email: sales@meyermfg.com  
Website: www.meyermfg.com



## 2.0 PRE-DELIVERY & DELIVERY CHECK LIST

PB-RT-REAR Check List

### Meyer Manufacturing Corporation

Phone: 715-654-5132 • Toll-Free: 1-800-325-9103 • P.O. Box 405 • Dorchester, WI 54425

This Pre-Delivery & Delivery Check List must be gone through by the Selling Party and the Customer to validate the Owner's Registration Form.

#### PRE-DELIVERY CHECK LIST

After the New Meyer Forage Box has been completely set-up, check to be certain it is in correct running order before delivering it to the customer.

The following is a list of points to inspect:

**Check off each item as you have made the proper adjustments and found the item operating satisfactorily. Any adjustments made, MUST be according to specifications defined in this manual.**

- All shields and guards are in place and securely fastened.
- All bolts and other fasteners are secure and tight.
- All mechanisms operate trouble free.
- All grease fittings have been lubricated, gear boxes filled to proper levels, and all roller chains are oiled. See "Lubrication" section of this manual.
- Main Apron Chains are at proper tension. See "Adjustments" section in this manual.
- All stop/tail/turn lights work properly.
- All decals are in place and legible.

#### DELIVERY CHECK LIST

The following check list is an important reminder of valuable information that **MUST** be passed on to the customer at the time the unit is delivered.

**Check off each item as you explain it to the customer.**

- Explain to the customer that pre-delivery check list was fully completed.
- Give customer the Owner & Operator's Manual. Instruct to read and completely understand its contents **BEFORE** attempting to operate the Forage Box.
- Explain and review with customer the New Meyer Forage Box manufacturer's warranty.
- Show the customer where to find the serial number on the implement.
- Explain and review with the customer "Safety Precautions" section of this manual.
- Explain and review with customer the proper "Start-up and Operating Procedures" sections of this manual.
- Demonstrate the start-up & shutdown controls, proper hydraulic hose storage and tip holder used to keep system clean from contaminants.
- Explain that regular lubrication and proper adjustments are required for continued proper operation and long life of the Forage Box. Review with the customer the "Lubrication" and "Adjustments" sections of this manual.
- Explain the importance of main apron chain tension, and the need to watch and tighten during the break in period.
- Explain and review with the customer the recommended loading and unloading procedures.
- Fully complete this "PRE-DELIVERY & DELIVERY CHECK LIST" with the customer.



**Meyer Manufacturing Corporation**

674 W. Business Cty Rd A

Dorchester, WI 54425

Phone: 1-800-325-9103

Fax: 715-654-5513

Email: [sales@meyermfg.com](mailto:sales@meyermfg.com)

Website: [www.meyermfg.com](http://www.meyermfg.com)

### 3.0 INTRODUCTION

*Congratulations on your purchase of a new Meyer farm equipment product. Undoubtedly you have given much consideration to your purchase and we're proud that you have selected Meyer. Pride in craftsmanship, engineering and customer service have made Meyer products the finest in the farm equipment industry today.*

*There is no substitute for quality. That is why thousands of people like you have purchased Meyer farm equipment. They felt it was the best equipment to serve their farming needs, now and in years to come. We ask that you follow our policy of "safety first", and we strongly suggest that you read through the Operator's & Parts manual before operating your Meyer farm equipment. Meyer Manufacturing Corporation wants to thank you for not compromising quality. We are determined to offer excellence in customer service as well as provide you with the very best value for your dollar.*

*Sincerely,*

*All Employees of*

*MEYER MANUFACTURING CORPORATION*

---

The RT Model is available as a truck, Ag cart or wagon mounted unit pulled and powered by a farm tractor.

The RT Model may be referred to as dump box, forage box implement or rear unloading forage box in this manual.

**NOTE: All references to right hand (RH), left hand (LH) front and rear apply to the product as viewed from the rear of the box.**



**IMPORTANT:** You are urged to study this manual and follow the instructions carefully. Your efforts will be repaid in better operation and service as well as a savings in time and repair expense. Failure to read this manual and understand the machine could lead to serious injury. If you do not understand instructions in this manual, contact either your dealer or Meyer Manufacturing Corp. at Dorchester, WI 54425.



**WARRANTY:** At the front of this manual is an "Owner's Registration Form". Be sure your dealer has completed this form and promptly forwarded a copy to Meyer Manufacturing to validate the manufacturer's warranty. The product model and serial number are recorded on this form and on the inside of the front cover for proper identification of your Meyer Forage Box by your dealer and the manufacturer when ordering repair parts. The serial number plate is riveted to the front left upright.



**REPAIR PARTS:** At the back of this manual is the repair parts section. All replacement parts are to be obtained from or ordered through your Meyer dealership. When ordering repair parts, refer to the parts section and give complete information including quantity, correct part number, detailed description and even Model No. and Serial No. of the forage box which needs repair parts.

**Manufacturer's Statement:** Meyer Manufacturing Corporation reserves the right to make improvements in design, or changes in specifications at any time, without incurring any obligation to owners of units previously sold. This supersedes all previous published instructions.



## TABLE OF CONTENTS

1.0	IMPORTANT INFORMATION	2
2.0	PRE-DELIVERY & DELIVERY CHECK LIST	3
3.0	INTRODUCTION	5
4.0	MANUFACTURER'S WARRANTY	9
5.0	SAFETY	11
5.1	SAFETY PRECAUTIONS	12
5.2	SAFETY SIGNS	14
5.3	SHUTOFF & LOCKOUT POWER	18
5.3.1	Shutoff & Lockout Power Recommendations	18
6.0	PRE-OPERATION	19
6.1	STATIC INSPECTION	19
6.2	LIGHT HOOK-UP	20
6.3	HYDRAULIC HOOK-UP	20
6.4	HITCHING TO TRACTOR	20
6.5	START-UP AND SHUT-DOWN	21
6.5.1	Start-Up	21
6.5.1	Start-Down	21
6.6	OPERATIONAL CHECKS	22
6.7	TRANSPORTING	23
6.7.1	Safety Chain	25
6.7.2	Brake Information	25
6.7.3	Tractor Towing Size Requirements	26
7.0	OPERATION	27
7.1	LOADING	27
7.2	NO ROOF IMPLEMENTS	28
7.3	UNLOADING	28
7.4	UNHOOKING THE TRACTOR	29
7.5	REAR DISCHARGE DOOR GATE DELAY (OPTIONAL)	30
8.0	MAINTENANCE	31
8.1	LUBRICATION	31
8.2	ADJUSTMENTS	33
8.2.1	Main Apron Cross Chains	33
8.3	STORING THE FORAGE BOX	34

8.4	RETURNING THE FORAGE BOX TO SERVICE .....	35
9.0	PARTS REPAIR AND REPLACEMENT .....	37
9.1	REPLACEMENT PARTS .....	37
	MAIN FRAME .....	38
	FRONT ENCLOSURE .....	42
	REAR GATE .....	44
	ROOF ASSEMBLY .....	46
	MAIN APRON DRIVE SYSREM .....	48
	MAIN APRON GEARBOX .....	50
	HYDRAULIC SYSTEM (PRIOR TO SN 17R1221, EXCLUDING SN17R1214) .....	52
	HYDRAULIC SYSTEM (SN 17R1221 & LATER, INCLUDING SN17R1214) .....	54
	HIGHWAY LIGHT PACKAGE KIT .....	56
	STEEL STRINGER TIE DOWN KIT .....	58
10.0	OPTIONAL EQUIPMENT .....	59
	REAR GATE DELAY .....	60
	SIDE HOOD DEFLECTOR .....	61
11.0	SPECIFICATIONS .....	63
	MAINTENANCE RECORD .....	67



## 4.0 MANUFACTURER'S WARRANTY

2/2015

### MEYER RT FORAGE BOX

- I. The "Owner's Registration Form" must be completed in full and promptly returned to Meyer Mfg. Corp. for this warranty to become both valid and effective. All warranties on new Meyer forage boxes shall apply only to the original retail customer from an authorized Meyer Mfg. Corp. dealership.
- II. This warranty shall not apply to any Meyer forage box which has been subjected to misuse, negligence, alteration, accident, incorrect operating procedures, has been used for an application not designed for or pre-authorized by Meyer in writing, has had the serial numbers altered, or which shall have been repaired with parts other than those obtained through Meyer Mfg. Corp. Meyer is not responsible for the following: Depreciation or damage caused by normal wear, lack of reasonable and proper maintenance, failure to follow the operator's manual recommendations or normal maintenance parts and service. Meyer is not responsible for rental of replacement equipment during warranty repairs, damage to a power unit (including but not limited to a truck or tractor), loss of earnings due to equipment down time, or damage to equipment while in transit to or from the factory or dealer.
- III. Meyer Mfg. Corp. warrants new Meyer forage box to be free from defects in material and workmanship under recommended use and maintenance service, as stated in the "Owner / Operator's Manual & Parts Book", as follows:
  - A. Meyer Mfg. Corp. will repair or replace F.O.B. Dorchester, WI, as Meyer Mfg. Corp. elects, any part of a new Meyer Forage Box which is defective in material or workmanship:
    - i. Without charge for either parts or labor during the first (1) year from purchase date to the original retail customer.
    - ii. Without charge for parts only during the second (2) year from purchase date to the original retail customer.
- IV. COMMERCIAL USE: Coverage as in paragraph III.A.i. ONLY, except warranty coverage is for (90) days for parts and labor to the original commercial retail customer.
- V. Repairs eligible for labor warranty must be made by Meyer Mfg. Corp. or an authorized Meyer dealership. The original retail customer is responsible for the transportation of the forage box to the dealership for warranty service or for any service call expenses.
- VI. Except as stated above, Meyer Mfg. Corp. shall not be liable for injuries or damages of any kind or nature, direct, consequential, or contingent, to persons or property. This warranty does not extend to loss of crop or for any other reasons.
- VII. No person is authorized to give any warranties or to assume any other obligation on Meyer Mfg. Corp.'s behalf unless made or assumed in writing by Meyer Mfg. Corp. This warranty is the sole and exclusive warranty which is applicable in connection with the manufacture and sale of this product and Meyer Mfg. Corp's responsibility is limited accordingly.
- VIII. Tires, optional scales and tarps fall under the original manufacturer's warranty.



## 5.0 SAFETY

The Meyer Forage Box is manufactured with operator safety in mind. Located on the forage box are various safety signs to aid in operation and warn of hazardous areas. Pay close attention to all safety signs on the forage box.

Carefully follow the operating and maintenance instructions in this manual and all applicable safety laws. Failure to follow all safety procedures may result in serious injury or death.

**Before attempting to operate this forage box, read and study the following safety information. In addition, make sure that every individual who operates or works with the forage box, whether family member or employee, is familiar with these safety precautions.**

Meyer Mfg. Corp. provides guards for exposed moving parts for the operator's protection; however, some areas cannot be guarded or shielded in order to assure proper operation. The operator's manual and safety signs on the forage box itself warn you of hazards and must be read and observed closely!

---

### Safety Alert Symbol

This symbol is used to call attention to instructions concerning personal safety. Be sure to observe and follow these instructions. Take time to be careful!

---



The signal word **DANGER** on the machine and in the manual identifies a hazardous situation which, if not avoided, WILL result in death or serious injury.



The signal word **WARNING** on the machine and in the manual indicates a potentially hazardous situation which, if not avoided, COULD result in death or serious injury.



The signal word **CAUTION** on the machine and in the manual indicates a potentially hazardous situation which, if not avoided, MAY result in minor or moderate injury. It may also be used to alert against unsafe practices.



**IMPORTANT**

This notice identifies procedures which must be followed to avoid damage to the machine.

Danger, Warning, Caution, and instructional decals and plates are placed on the equipment to protect anyone working on or around this machine, as well as the components of the machine. All personnel operating or maintaining this equipment must familiarize themselves with all Danger, Warning, Caution, and instructional decals and plates.

## 5.1 SAFETY PRECAUTIONS



**All individuals who will operate this Forage Box must read and completely understand this Operator's And Parts Manual. Operator must have instructions before operating the machine. Untrained operators can cause injury or death.**

- DO NOT allow anyone to operate, service, inspect or otherwise handle this forage box until all operators have read and understood all of the instructional materials in this Operator's And Parts Manual and have been properly trained in its intended usage.
- For an operator to be qualified, he or she must not use drugs or alcohol which impair alertness or coordination while working. An operator who is taking prescription drugs must get medical advice to determine if he or she can safely operate a machine and the equipment.
- Make sure all personnel can READ and UNDERSTAND all safety signs.
- DO NOT allow minors (children) or inexperienced persons to operate this forage box.
- DO NOT operate until all shields and guards are in place and securely fastened.
- DO NOT adjust, clean, lubricate, or reset the emergency stop while the forage box is in motion.
- Inspect when first delivered and regularly thereafter; that all connections and bolts are tight and secure before operating.
- Know how to stop operation of the forage box before starting it!
- Make certain everyone is clear of the forage box before applying power.
- Make certain everyone stays clear of the discharge opening while operating.
- Keep hands, feet and clothing away from moving parts. Loose or floppy clothing should not be worn by the operator.
- Observe all applicable traffic laws when transporting on public roadways (where legal to do so). Check local laws for all highway lighting and marking requirements.
- Shut off and lock out power before adjusting, servicing, maintaining or clearing an obstruction from this machine. (See 5.3 SHUTOFF & LOCKOUT POWER on page 18.)
- Always enter curves or drive up or down hills at a low speed and at a gradual steering angle.
- Never allow riders on either tractor / truck or equipment.
- Keep tractor / truck in a lower gear at all times when traveling down steep grades.
- Maintain proper brake settings at all times (if equipped).
- DO NOT step up on any part of the forage box at any time.
- Replace damaged or missing shields.
- Stay away from overhead power lines. Electrocutation can occur without direct contact.
- Use only properly rated undercarriage and tires.

### **Safety Precautions For Tractor Towed Units:**

- Do not exceed 20 mph (32 kph). Reduce speed on rough roads and surfaces.
- Always install a SMV emblem on pull-type equipment when transporting on roadways and keep clean and bright.
- Always yield to oncoming traffic in all situations and move to the side of the road so any following traffic may pass.

### **Safety Precautions For Truck Mounted Units:**

- Comply with state and local laws governing highway safety and movement of machinery on roadways.

### **Safety Precautions For Hydraulic System:**

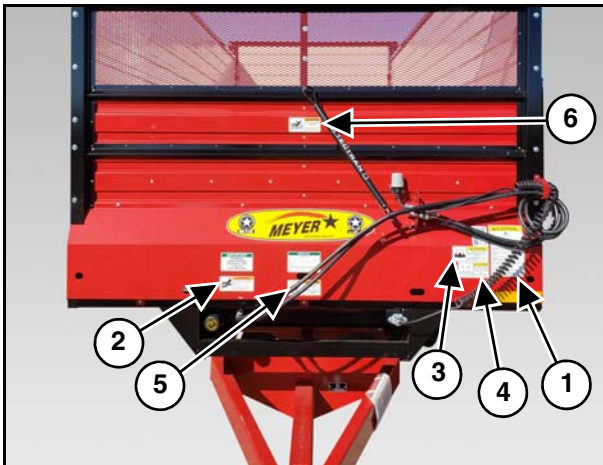
- Check hydraulic tubes, hoses and fittings for damage and leakage. Never use hands to check for leaks. Hydraulic tubes and hoses must be properly routed and have adequate support and secure clamps. Tighten or replace any parts that show leakage.
- Always clean fluid spills. Do not use gasoline or diesel fuel for cleaning parts. Use commercial nonflammable solvents.

## 5.2 SAFETY SIGNS



Read all safety signs on the Forage Box and in this manual. Keep all safety signs clean and replace any damaged or missing safety signs before operating the equipment. Do Not remove any safety signs. Safety signs are for operator protection and information.

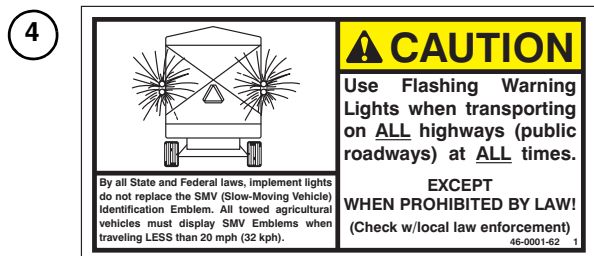
FRONT OF FORAGE BOX



PART NO. 46-8500-7



PART NO. 46-0001-35



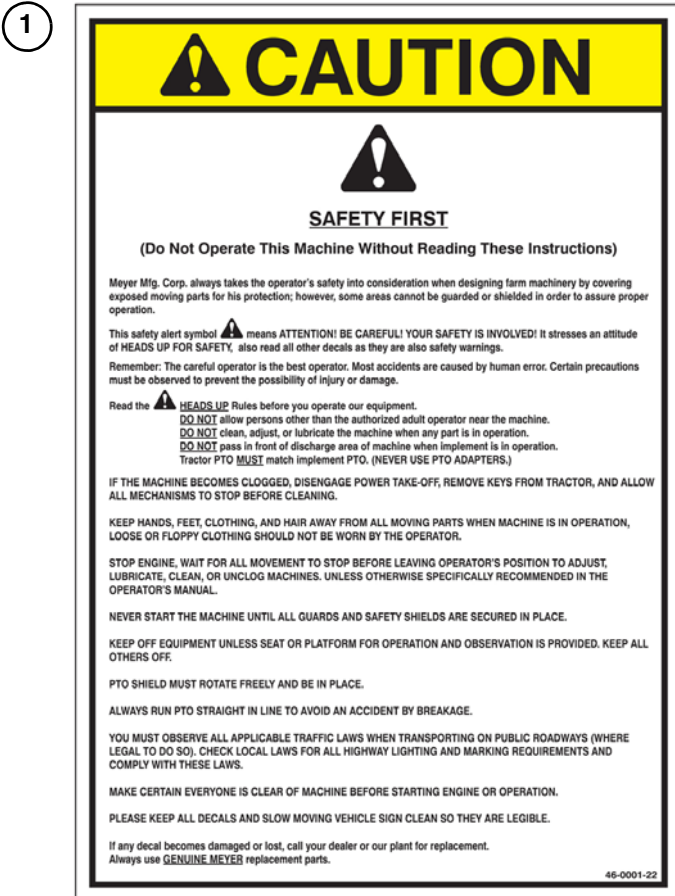
PART NO. 46-0001-62 (Pull Type Only)



PART NO. 46-0001-4



PART NO. 46-9100-4



PART NO. 46-0001-22

REAR OF FORAGE BOX



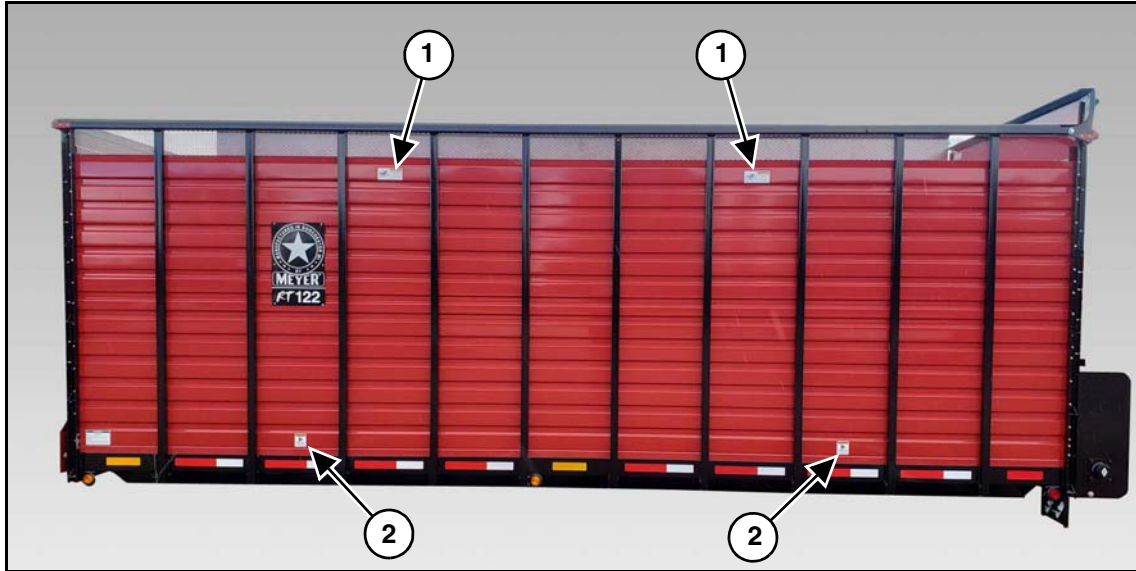
PART NO. 46-9100-4



PART NO. 46-0011



LEFT SIDE OF FORAGE BOX



1



PART NO. 46-9100-4

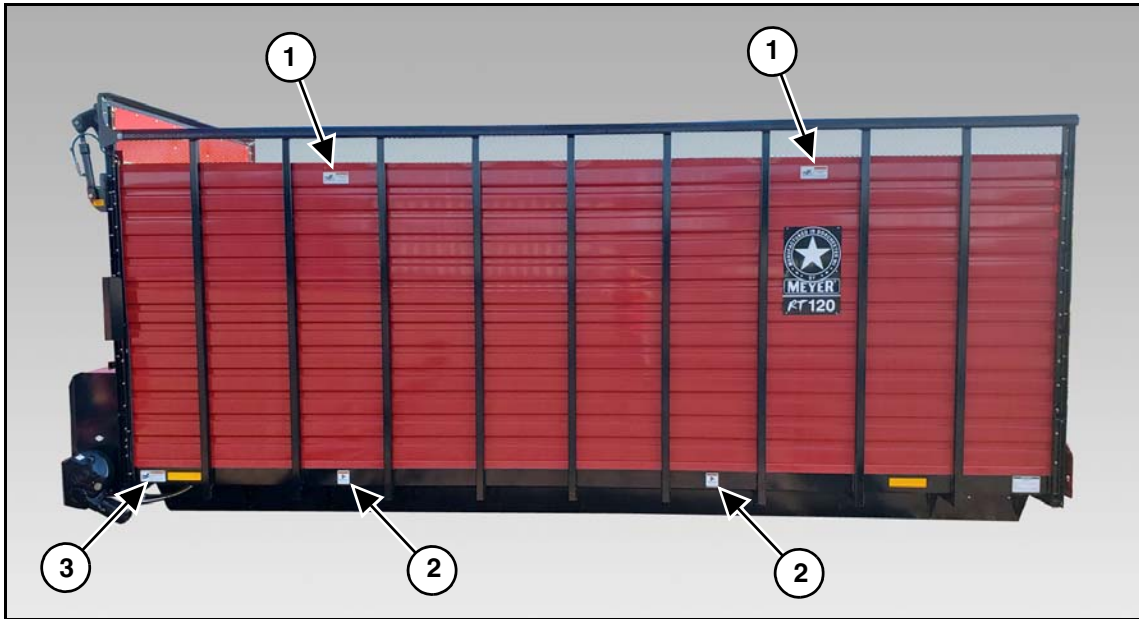
2



PART NO. 46-0001-205



RIGHT SIDE OF FORAGE BOX



1



PART NO. 46-9100-4

2



PART NO. 46-0001-205

3



PART NO. 46-8500-7

## 5.3 SHUTOFF & LOCKOUT POWER

Any individual that will be adjusting, servicing, maintaining, or clearing an obstruction from this machine needs to ensure that this machine stays safely “OFF” until the adjustment, service, or maintenance has been completed, or when the obstruction has been cleared, and that all guards, shields, and covers have been restored to their original position. The safety of all individuals working on or around this machine, including family members, are affected. The following procedure will be referred to throughout this manual, so be familiar with the following steps.

### 5.3.1 Shutoff & Lockout Power Recommendations

#### 1. Think, Plan and Check

- a. **Think** through the entire procedure and identify all the steps that are required.
- b. **Plan** what personnel will be involved, what needs to be shut down, what guards / shields need to be removed, and how the equipment will be restarted.
- c. **Check** the machine over to verify all power sources and stored energy have been identified including engines, hydraulic and pneumatic systems, springs and accumulators, and suspended loads.

2. **Communicate** - Let everyone involved, including those working on or around this machine, that work is being done which involves keeping this machine safely “OFF”.

#### 3. Power Sources

- a. **LOCKOUT** - Shut off engines and take the key, or physically lock the start/on switch or control. Disconnect any power sources which are meant to be disconnected (i.e. electrical and hydraulic of pull-type units).
- b. **TAGOUT** - Place a tag on the machine noting the reason for the power source being tagged out and what work is being done. This is particularly important if the power source is not within your sight and/or will need to be isolated for a longer period of time.

4. **Stored Energy** - Neutralize all stored energy from its power source. Ensure that this machine is level, set the parking brake, and chock the wheels. Disconnect electricity, block moveable parts, release or block spring energy, release pressure from hydraulic and pneumatic lines, and lower suspended parts to a resting position.

5. **Test** - Do a complete test and personally double check all of the above steps to verify that all of the power sources are actually disconnected and locked out.

6. **Restore Power** - When the work has been completed, follow the same basic procedures, ensuring that all individuals working on or around this machine are safely clear of the machine before locks and tags are removed and power is restored.

**IMPORTANT**

It is important that everyone who works on this equipment is properly trained to help ensure that they are familiar with this procedure and that they follow the steps outlined above. This manual will remind you when to Shutoff & Lockout Power.

## 6.0 PRE-OPERATION



### CAUTION

**DO NOT** allow anyone to operate, service, inspect or otherwise handle this forage box until all operators have read and understand all of the instructional materials in this Operator's And Parts Manual and have been properly trained in its intended usage.

**Verify that the forage box is securely fastened to the tractor / truck.**

**Verify that all electrical / hydraulic connections and bolts / hardware are tight and securely fastened before operating the forage box.**

**Always keep all shields and guards in place and securely fastened.**

**Keep hands, feet and clothing away.**

**Wear safety glasses to prevent eye injury when any of the following conditions exist:**

- **When fluids are under pressure.**
- **Flying debris or loose material is present.**
- **Tools are being used.**

### 6.1 STATIC INSPECTION



### WARNING

**Hydraulic fluid escaping under pressure can have sufficient force to cause injury. Keep all hoses and connections in good serviceable condition. Failure to heed could result in serious personal injury or death.**

Before operating the forage box for the first time and each time thereafter, check the following items:

1. Check that all safety signs are in good and legible condition.
2. Inspect the forage box for proper adjustments. (See 8.2 ADJUSTMENTS on page 33.)
3. Lubricate the equipment. (See 8.1 LUBRICATION on page 31.)
4. Make sure that all guards and shields are in place, secured and functioning as designed.
5. Check condition of all hydraulic components for leaks. Repair or replace as required.
6. Check the gear box oil level. (See 8.1 LUBRICATION).
7. Inspect the condition of safety lighting. Repair or replace as required.
8. Check to see that no obstructions are present in the forage box. Be sure that there are no tools laying on or in the forage box.
9. Verify that all electrical and hydraulic connections are tight and secure before operating.
10. Verify that all electrical and hydraulic connections are tight and secure before operating.
11. Watch for any worn or cracked welds. If found, have qualified personnel repair immediately, replacement is necessary.
12. Check all bearings for wear. Replace as needed.

## 6.2 LIGHT HOOK-UP

**Truck Mounted Models:** A 4 pin electrical socket is provided to connect the electrical control plug from your truck. This will operate signal, tail, clearance and brake lights.

**NOTE:** Depending on make and model of the truck, it may be necessary to install a light converter. (Meyer part #56-0028). The converter allows signal lights and brake lights to operate according to DOT Lighting Standards.

## 6.3 HYDRAULIC HOOK-UP

Truck & Tractor hydraulic system should be capable of 25 GPM @ 3000 PSI peak pressure. If truck mounted, install a relief valve set at 3000 PSI. Engine RPM should be 1500 RPM. Set up hydraulic system on Truck mounted units using a 35-40 gallon reservoir filled with a minimum of a 30 gallons of hydraulic oil. 3/4" NPT for front and rear hydraulic hookup.

Call the factory for further information.

**NOTE:** The PTO horsepower and / or hydraulic requirements may not reflect adequate tractor size for towing the machine. Refer to Tractor Weight Requirements 6.7.3 for these recommendations and transporting section for additional tractor and towing requirements.

**IMPORTANT**

Do not exceed maximum PSI or a motor failure could result.

## 6.4 HITCHING TO TRACTOR

Move to the operator's position, start the engine and release the parking brake.



**WARNING**

Do not allow anyone to stand between the tongue or hitch and the tractor when backing up to the Forage Box.

Move the tractor in front of the forage box. Slowly move the tractor backwards towards the forage box and align the drawbar with the implement's hitch.

**NOTE:** Lower or raise the forage box jack to properly align the drawbar and hitch.

Fasten the forage box hitch to the tractor drawbar with a properly sized hitch pin with safety retainer. (Reference ANSI/ASABE AD6489-3 Agricultural vehicles - Mechanical connections between towed and towing vehicles - Part 3: Tractor drawbar.) (See your Trailer / Chassis / Wagon manual for further details.)

Before operation and after hitching the tractor to the implement, connect the hydraulic hoses and light cord to the tractor. Connect any optional equipment as needed.

## 6.5 START-UP AND SHUT-DOWN



### CAUTION

**DO NOT** allow anyone to operate, service, inspect or otherwise handle this forage box until all operators have read and understand all of the instructional materials in this Operator's And Parts Manual and have been properly trained in its intended usage.

Before operating the forage box, look in all directions and make sure no bystanders, especially small children are in the work area.

---



### WARNING

Disengage the hydraulic power, engage the machine's parking brake, stop the engine and make sure all moving components are completely stopped before connecting, disconnecting, adjusting or cleaning this equipment.

Always keep all shields and guards in place and securely fastened.

Keep hands, feet and clothing away.

---

#### 6.5.1 Start-Up

Enter the tractor or truck and start the engine.

Slowly engage hydraulics.

Increase engine RPM to 1500.

#### 6.5.1 Start-Down

Reduce engine speed to idle.

Disengage the hydraulics.

Stop the engine and exit the tractor or truck.

Verify that the door latches have engaged the apron chain links properly, securing the door in the closed position.

## 6.6 OPERATIONAL CHECKS

---



### CAUTION

Shutoff and lockout power before performing machine service, adjusting, maintaining, or clearing an obstruction from this machine. Refer to section 5.3 SHUTOFF & LOCKOUT POWER.

**DO NOT** allow anyone to operate, service, inspect or otherwise handle this spreader until all operators have read and understand all of the instructional materials in this Operator's And Parts Manual and have been properly trained in its intended usage.

Before operating the forage box, look in all directions and make sure no bystanders, especially small children are in the work area.

---



### WARNING

Always keep all shields and guards in place and securely fastened. Keep hands, feet and clothing away.



### DANGER

Make certain all personnel are clear of the forage box and the rotating spinners or beaters before applying power. Failure to heed may result in serious personal injury or death.

Before running material through the forage box for the first time and each time thereafter, follow the steps listed below.

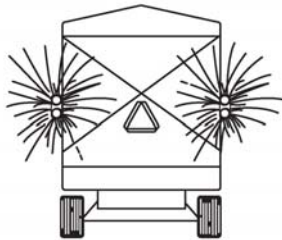
1. Make sure forage box is empty.
2. Follow the Start-Up procedure section 6.5.1.
3. Operate the spreader for approximately 5-10 minutes.
4. Follow the Shut-Down procedure section 6.5.2.
5. Check drive components to be sure components are not abnormally hot.
6. Check all hydraulic components for leaks.
7. Adjust and lubricate equipment as needed. (See 8.1 LUBRICATION) & (See 8.2 ADJUSTMENTS).

**! CAUTION**

**AVOID SERIOUS INJURY OR DEATH**

- Read and understand owner’s manual before using. Review safety precautions annually.
- Before operating the forage box, look in all directions and make sure no bystanders, especially small children are in the work area.
- No riders allowed when transporting.
- Do not drink and drive.
- Before moving, be sure required lights and reflectors are installed and working.
- Before maintenance or repair, stop vehicle, set parking brake, and remove ignition key.
- Place safety stands under frame and chock wheels before working on tires or chassis.
- Maintain wheel bolts at torque as recommended in the manual.
- If equipped with brakes, maintain proper adjustment.

**! CAUTION**



**Pull-Type Units**

- Use flashing warning lights when transporting on ALL highways (public roadways) at ALL times (Tractor towed models) EXCEPT WHEN PROHIBITED BY LAW! (Check w/local law enforcement)
- By all state and federal laws, implement lights do not replace the SMV (Slow-Moving Vehicle) identification emblem. All towed agricultural vehicles must display SMV emblems when traveling LESS than 20 mph (32 kph).
- Check for traffic constantly. Be sure you can see that no one is attempting to pass you and that all traffic is sufficiently clear from you before making any turns.
- Securely attach to towing unit. Use a high strength appropriately sized hitch pin with mechanical retainer and attach safety chain.
- Do not exceed 20 mph (32 kph). Slow down for corners and rough terrain.

**! WARNING**



**To Prevent Serious Injury Or Death**

- Keeps hands and body out of the hitch area when attaching towing vehicle.
- Keep body clear of crush point between towing vehicle and load.

**! WARNING**



**To Prevent Serious Injury Or Death**

- Shift to lower gear before going down steep grades.
- Avoid traveling on slopes or hills that are unsafe.
- Keep towing vehicle in gear at all times.
- Never exceed a safe travel speed (which could be less than 20 MPH.).





## WARNING

You must observe all applicable traffic laws when transporting on public roadways. Check local laws for all highway lighting and marking requirements. Failure to heed could result in serious personal injury or death.



## WARNING

(Tractor Powered) Do not tow at speeds in excess of 20 mph. Failure to heed could result in serious personal injury or death.

## IMPORTANT

Verify that the rear discharge door latches have engaged the apron chain links, securing the doors in the closed position before traveling on roadways.

## IMPORTANT

Verify that the fold down cross conveyor extension (if equipped), is folded up (raised position) to reduce transport width.

## IMPORTANT

The running gear on tractor pulled models may be equipped with a telescoping tongue for convenience to hitch up. Always back up and lock this tongue in the operating position after hitching.

## IMPORTANT

If you will travel on public roads and it is legal to do so, you must know all rules governing such operation. This will include lighting and brake requirements in addition to traffic rules.

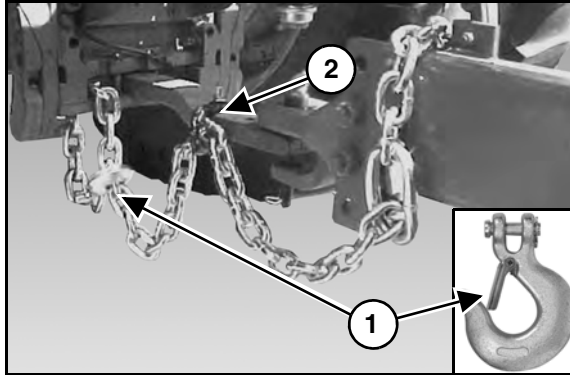
An Optional Highway Lighting Package is available to assist in meeting these requirements. See your Meyer Dealer for Details.



### 6.7.1 Safety Chain



A safety chain must be installed to retain the connection between the tractor (or other towing vehicle) and implement whenever traveling on public roads in case the hitch connection would separate.



The chain must be of adequate size to hold the weight of the loaded forage box. See your ag cart or wagon owner/operator's manual and parts book, which is also available at [www.meyermfg.com](http://www.meyermfg.com).

**NOTE:** If using a grab hook at the end(s) of the chain to secure the chain to itself, a hook latch (Item 1) must be installed.

The length of the safety chain is not to be any longer than necessary to turn without interference. If any chain links or attachment hardware are broken or stretched, repair before using. Store chain so it does not corrode or become damaged. Do not use this chain for other implements because the strength and length of the chain may not be adequate. Identify this chain for use

on this particular forage box.

**NOTE:** Do not use the intermediate support (Item 2) as the attaching point.

**IMPORTANT**

If you do not have a safety chain, or a replacement safety chain is needed, see your local Meyer dealer and do not operate on public roads until you are able to travel with the safety chain properly installed.

### 6.7.2 Brake Information

See your trailer / chassis manual for brake and braking Information.

### 6.7.3 Tractor Towing Size Requirements

Use the following charts to help calculate the minimum tractor weight when towing without implement brakes. The minimum tractor weight, up to 20 mph (33 kph) needs to be 2/3's of the box Gross Weight (GW). Gross Weight is calculated by the empty weight of the box and undercarriage combined added to the Load Weight. Then take the Gross Weight and multiply it by 0.667 and you will get the Minimum Required Weight of the Tractor.

#### Gross Weight

FORAGE BOX WEIGHT, EMPTY (LBS)		UNDERCARRIAGE WEIGHT (LBS)		LOAD (LBS)		GROSS WEIGHT (GW) (LBS)
	+		+		=	GW
	+		+		=	

#### Minimum Required Weight of the Tractor

2/3		GROSS WEIGHT (GW) (LBS)		MINIMUM TRACTOR WEIGHT (LBS)
0.667	x	GW	=	TW
	x		=	

MATERIAL ESTIMATED WEIGHT PER CUBIC FOOT	
MATERIAL	LBS / CU. FT.
Soybeans	47 lbs.
Cotton Seed (Dry)	20 lbs.
Corn (Shelled)	45 lbs.
Corn Silage	30 lbs.
Haylage	20 lbs.
Sawdust	17 lbs.

## 7.0 OPERATION



DO NOT allow anyone to operate, service, inspect or otherwise handle this forage box until all operators have read and understand all of the instructional materials in this Operator's And Parts Manual and have been properly trained in its intended usage.

Before operating the forage box, look in all directions and make sure no bystanders, especially small children are in the work area.

Do not climb or step on any part of the forage box at any time.

Turn on level ground. Slow down when turning.

Go up and down slopes, not across them.

Keep the heavy end of the machine uphill.

Do not overload the machine.

Check for adequate traction.



### 7.1 LOADING



Shutoff and lockout power before performing machine service, adjusting, maintaining, or clearing an obstruction from this machine. Refer to section 5.3 SHUTOFF & LOCKOUT POWER.



Overloading may cause failure of axles, tires, structural members, hitches, loss of vehicle control. **DO NOT** exceed maximum gross weight. (See 11.0 SPECIFICATIONS on page 63.)



Filling the forage box evenly from the front to rear will ensure there is downward force on the tractor hitch and provide traction for the tractor wheels.

**NOTE:** Heaping material over the sides of the box will add a significant amount of weight to the load.

**NOTE:** Overloading can have detrimental effects on the integrity of the implement and it's safe use. Some materials such as soybeans may not be able to be filled to struck level. Overloading will void warranty and increase risk to the operator's safety. Always be aware of your gross weight.

MAXIMUM FORAGE BOX GROSS WEIGHT	
MODEL	LBS

MATERIAL ESTIMATED WEIGHT PER CUBIC FOOT	
MATERIAL	LBS / CU.FT.
Soybeans	47 lbs.
Cotton Seed (Dry)	20 lbs.
Corn (Shelled)	45 lbs.
Corn Silage	30 lbs.
Haylage	20 lbs.
Sawdust	17 lbs.

**NOTE:** Maximum Gross Weight is the lesser value between the Implement, chassis, or tires.

## 7.2 NO ROOF IMPLEMENTS

Drive alongside the loading vehicle. Fill the forage box evenly to properly distribute the load while loading. When dumping into the box with an end-loader, center the bucket just forward of the axle to properly distribute the load while loading.

## 7.3 UNLOADING

### **WARNING**



**STAND CLEAR, the rear discharge door can spring open quickly and with extreme force.**

**Keep all persons well clear of the rear discharge door, forage box and unloading area.**

**The rear discharge door opens automatically by releasing its latches as the main aprons begin to move.**

**Pressure of forage against the rear door causes it to spring open very quickly.**

### **CAUTION**

**Shutoff and lockout power before performing machine service, adjusting, maintaining, or clearing an obstruction from this machine. Refer to section 5.3 SHUTOFF & LOCKOUT POWER.**

**Never enter the forage box without shutting power “OFF” to the machine. (See 5.3 SHUTOFF & LOCKOUT POWER on page 18.)**

**Never use “LIVE” power to aid in the clean-out of a clogged machine.**

### **IMPORTANT**

**The unloading process described is to be performed by the operator alone. This will eliminate unexpected “start-ups” and minimize other hazards that could result by more than one person in control.**

**NOTE: Unloading is best observed from the operator’s seat.**

**NOTE: The front of the forage box is open or is equipped with a mesh window to monitor forage level from the operator’s seat.**

Enter the tractor / truck, start the engine, release the parking brake.

Move the tractor / truck and forage box to the unloading area.

Place all tractor / truck controls in neutral, engage the parking brake and SLOWLY engage the apron chains to open the rear door.

Once the load has started to move, release the parking brake, move forward to prevent the silage from being carried underneath into the main apron chain return area. The front of the box has a see through mesh for convenient observation. Watch to verify the rear doors have properly latched.

**NOTE: Do not operate above the rated 1500 RPM engine speed.**

When finished unloading, reduce engine speed to idle and disengage the hydraulics. Move the forage box forward, away from the unloaded pile of forage. When free, gravity will allow the door to swing shut and the door latches to engage the apron chain links, securing the door(s) in the closed position.

Exit the tractor / truck and verify that the door latches have engaged the apron chain links properly, securing the door in the closed position.

## IMPORTANT

If the forage box becomes clogged, shut off all power to the forage box and wait until all rotating components are completely stopped. (See 5.3 SHUTOFF & LOCKOUT POWER on page 18.)

## IMPORTANT

If any component fails, shut off all power to the forage box and move the forage box to a safe work area. Repair or replace damaged components before proceeding with unloading of the forage.

### 7.4 UNHOOKING THE TRACTOR

1. Park the implement on level ground. Put the tractor controls in neutral, set the parking brake, and turn the engine off before dismounting.
2. Place wheel chocks in front and in back of the implement wheels on opposite sides to prevent the implement from rolling after the tractor is unhooked.
3. Remove the hydraulic hose ends from the tractor hydraulic ports and secure the hose ends on the front of the box to keep them clean.
4. Remove the light cords and any optional equipment connections.
5. Trailer Mounted Units: Remove the jack from the storage mount and install it on the hitch tongue. Crank the jack down until the hitch lifts off the tractor draw bar.



## WARNING

Keep hands, legs and feet from under tongue and hitch until jack is locked into place.

6. Remove the hitch pin.
7. Unhook safety chain from tractor drawbar and intermediate support.
8. Slowly drive the tractor away from the implement.

## **7.5 REAR DISCHARGE DOOR GATE DELAY (OPTIONAL)**

### *Opening The Door*

The rear discharge door opens automatically under load pressure and apron chain movement.

### *Closing The Door*

When finished unloading, reduce engine speed to idle and disengage hydraulic power.

Move the tractor and forage box forward, away from the unloaded forage. When the main hydraulic power has been turned off, hydraulic pressure will be relieved to allow the door to swing shut and the two outside latches to engage the apron chain links to secure the door in the closed position.

Looking through the front of the box, or using the front mesh window for viewing, verify the rear gate has properly latched. If the door latches are not automatically latching, move the washers on either side of the latch so that the latch is centered in the main apron chain link.

## 8.0 MAINTENANCE

### 8.1 LUBRICATION



**CAUTION**

Shutoff and lockout power before performing machine service, adjusting, maintaining, or clearing an obstruction from this machine. Refer to section 5.3 SHUTOFF & LOCKOUT POWER.

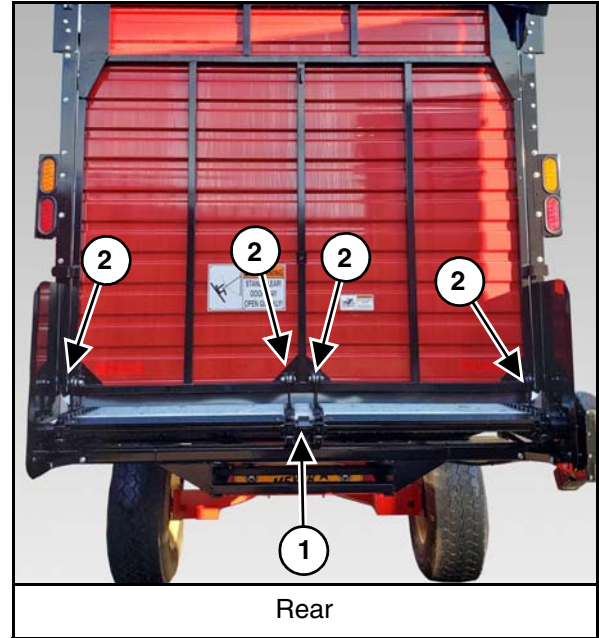
**IMPORTANT**

Fluid such as hydraulic fluid, grease, etc. must be disposed of in an environmentally safe manner. Some regulations require that certain spills and leaks on the ground must be cleaned in a specific manner. See local, state and federal regulations for the correct disposal.

**NOTE:** Use a grease type that is composed of a high quality lithium complex or better, unless otherwise stated. We recommend using a #1 grade in colder temperatures or a #2 grade in warmer temperatures.

**Monthly** or every **100-150 loads**:

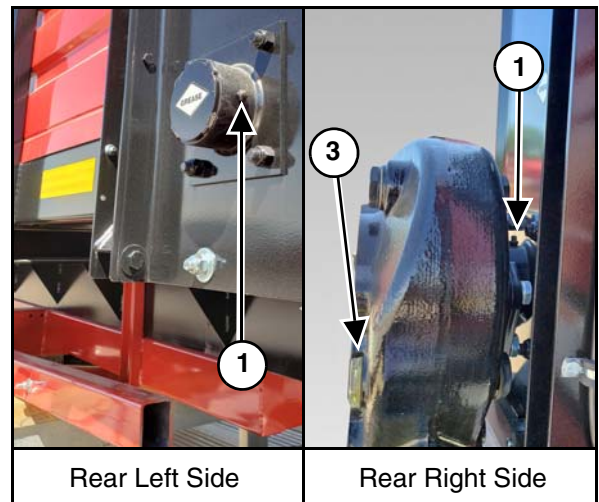
- Grease main apron shaft bearings (Item 1).
- Oil rear gate latch pivot bolts (Item 2).



- Using the visual indicator (Item 3) on the rear apron drive gearbox. The oil level should be at the top of the sight glass when parked on level ground.

Add EP 80-90 gear lube as needed (Lighter oil may be used in temperatures lower than 20° F.).

**NOTE: Change oil in the gear box after the first season of use and yearly thereafter.**





## 8.2 ADJUSTMENTS

### 8.2.1 Main Apron Cross Chains

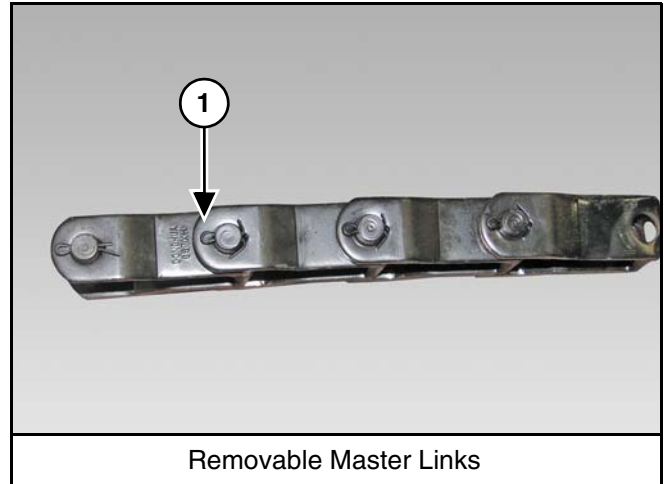
Check the main apron chain tension after unloading the first ten loads.

**IMPORTANT**

**Initial wear in of chain will require adjustment to maintain proper chain tension. FAILURE TO MAINTAIN PROPER CHAIN TENSION MAY VOID WARRANTY.**

Check chain tension daily for the next five days of operation, and weekly thereafter.

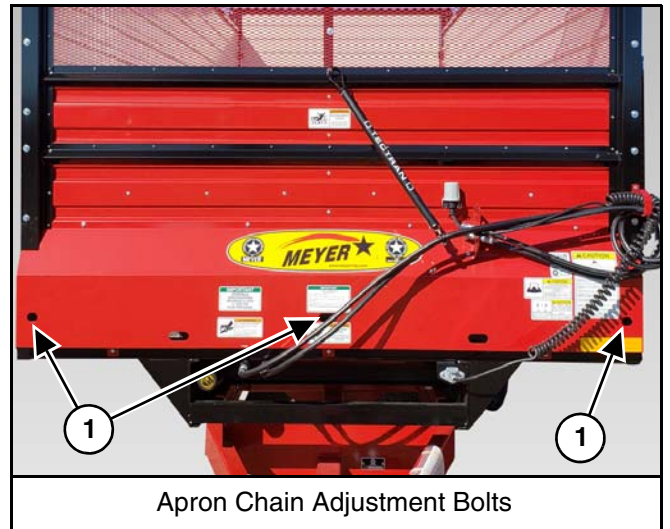
Locate the removable links by inspecting the chain and locating the section of links with cotter pins (Item 1).



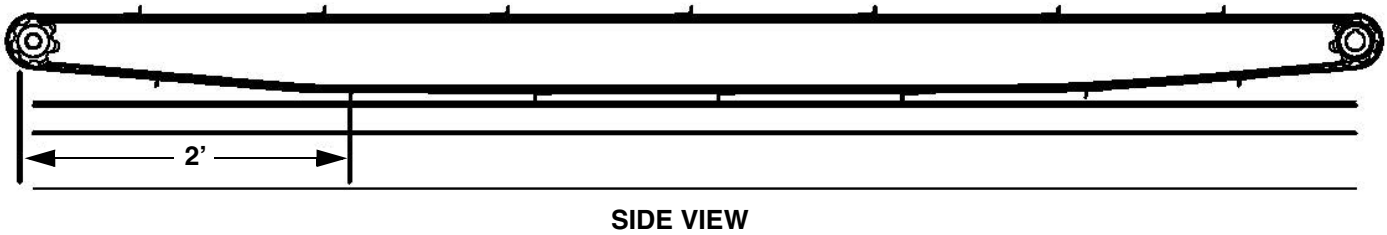
To tighten chains, tighten the adjuster bolts at each end and center of the front sprocket shaft (Item 1). Each apron chain has its own sprocket shaft. At the center cutout there is an adjuster bolt for each shaft. Tighten the adjuster bolts at each end of each shaft equally.

**NOTE: If adjuster bolt(s) reaches maximum travel, remove equal links from each strand. Removable links are provided in the chain.**

Removable master links are included in each of the four strands for shortening the chain after tightener travel is at its maximum. Remove a link from each of the four strands at the same time to assure proper timing, then re-adjust the adjuster bolts so the apron chain is at proper tension.



## TIGHTENER END OF BOX



SIDE VIEW

## IMPORTANT

Correct apron tension occurs when the return main apron slats ride 2" at mid span off of the front pair of slide rails and only one apron slat touches at mid span on the rear pair of slide rails.

### 8.3 STORING THE FORAGE BOX

LOCKOUT / TAGOUT the machine / forage box when preparing for storage. (See 5.3 SHUTOFF & LOCKOUT POWER on page 18.)

Sometimes it may be necessary to store your Meyer forage box for an extended period of time. Below is a list of items to perform before storage.

- Fully empty the forage from the box. (See 7.0 OPERATION on page 27.)
- Thoroughly clean the equipment inside & out.
  - Clean the inside of the drive shield.
- Lubricate the equipment. (See 8.1 LUBRICATION on page 31.)
- Apply oil to the main apron chains and inspect all forage box components for wear or damage. Repair and replace components as necessary.
- Make appropriate adjustments to equipment. (See 8.2 ADJUSTMENTS on page 33.)
- Place hydraulic hoses and 7-pin connector in the storage brackets (if equipped).
- Inspect the hitch and all welds on the equipment for wear and damage.
- Check for loose hardware, missing guards, or damaged parts.
- Check for damaged or missing safety signs (decals). Replace if necessary.
- Replace worn or damaged parts.
- Touch up all paint nicks and scratches to prevent rusting.
- Place the equipment in a dry protected shelter.
- Place the equipment flat on the ground.

#### **8.4 RETURNING THE FORAGE BOX TO SERVICE**

After the Meyer forage box has been in storage, it is necessary to follow a list of items to return the equipment to service.

- Be sure all shields and guards are in place.
- Lubricate the equipment.
- Connect to a truck (if required) and operate the truck and equipment, verify all functions operate correctly.
- Connect to a tractor (if required) and operate equipment, verify all functions operate correctly.
- Check for leaks. Repair as needed.
- Verify that all adjustments have been made.



## 9.0 PARTS REPAIR AND REPLACEMENT

### 9.1 REPLACEMENT PARTS



#### WARNING

Before servicing this equipment, ensure that all personnel, including family members are familiar with the equipment and the safety hazards that are present, along with the safety practices that should be observed while working in this equipment.



#### CAUTION

Inspect the axles, o-beams, spindles, tires, hitches and all safety shielding, safety signs and safety lighting regularly. These parts if not watched closely, could pose potential injury or death. If any part is found in need of repair, follow the SHUTOFF & LOCKOUT POWER recommendations and have qualified personnel repair immediately.

Shutoff and lockout power before performing machine service, adjusting, maintaining, or clearing an obstruction from this machine. Refer to section 5.3 SHUTOFF & LOCKOUT POWER.

#### IMPORTANT

It is important that everyone who works on this equipment is properly trained to help ensure that they are familiar with this procedure and that they follow the steps outlined above. This manual will remind you when to Shutoff & Lockout Power.

At times, parts on this implement will become worn or damaged. Performing repairs on this implement can pose a risk of injury including death. To reduce risk, the party that will be doing the repair should be very knowledgeable of the implement and the equipment that they will be using to do the repair.

- Review the repair so that a plan can be put together and the proper equipment can be used to repair this implement safely and correctly.
- Personal safety equipment may include items such as safety glasses, protective footwear, hearing protection, gloves, fire retardant clothes, etc.



#### WARNING

##### Crushing Hazard

Do Not work under suspended or blocked parts.



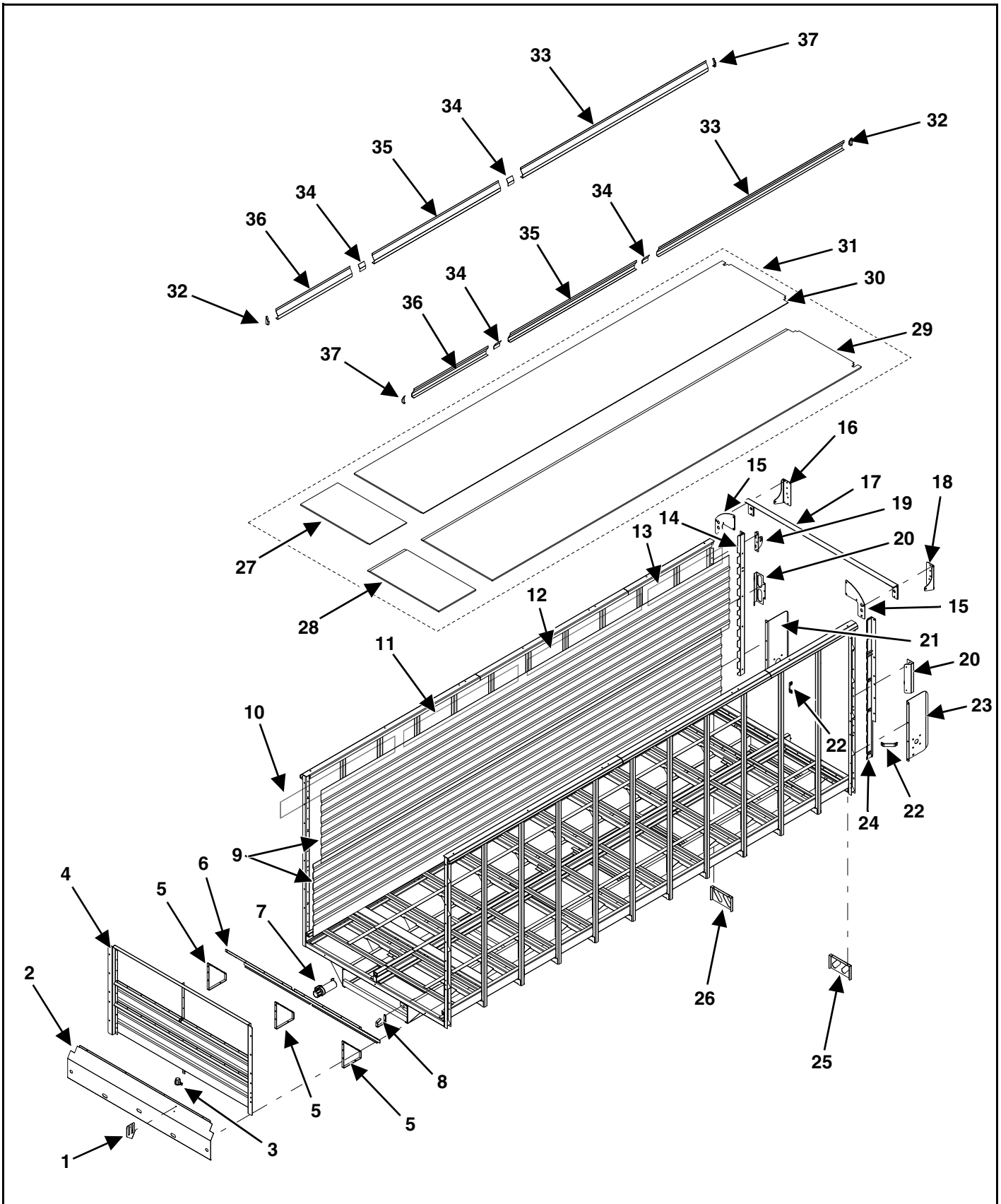
- The use of hoists and/or supports may be needed to handle heavy components.
- If the implement is being repaired in the field, make sure the parking brake of the tractor is engaged, the implement is on solid and level ground.
- Welding and torching should be done by properly trained individuals who have proven their skills.

#### IMPORTANT

Call the factory for any additional details you may need to perform the repair. Some parts may come with instruction sheets to assist in the repair. Instruction sheets may be provided with your parts order. Otherwise, if available, instruction sheets can be e-mailed or faxed for your convenience. Call Meyer Manufacturing Corporation toll free at 1-800-325-9103 or email [parts@meyermfg.com](mailto:parts@meyermfg.com).

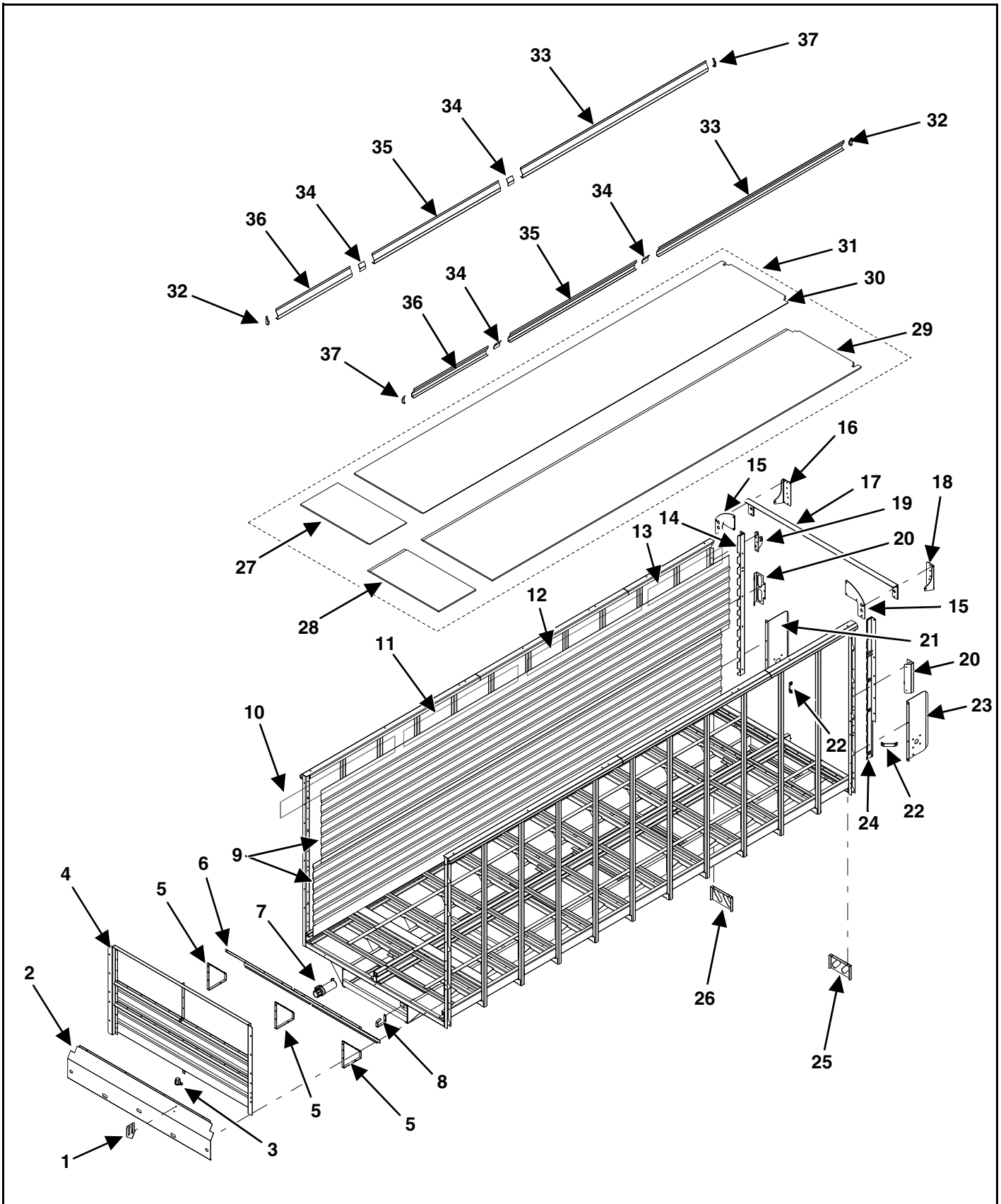
**NOTE:** Be environmentally friendly and dispose of any waste materials properly. Recycle when appropriate.

# MAIN FRAME



KEY	PART NUMBER	QTY	DESCRIPTION
1	25-0970	1	Hydraulic Hose Holder Bracket
2	24-0360	1	Front Main Apron Shield
3	56-0009	1	Plug Holder
4	See Page 42	1	Front Enclosure
5	25-0765	3	Gate Deflector Shield Support Bracket Weldment
6	24-0316-1	1	Deflector Shield
7	33-0063	1	Manual Holder
8	25-0209	1	Hydraulic Hose Hanger
9	761III-40.75-16	4	Painted Galvanized Panel 40-3/4" x 192" (RT116)
	761III-40.75-18	4	Painted Galvanized Panel 40-3/4" x 216" (RT118)
	761III-40.75-20	4	Painted Galvanized Panel 40-3/4" x 240" (RT120)
	761III-40.75-22	4	Painted Galvanized Panel 40-3/4" x 264" (RT122)
	761III-40.75-24	4	Painted Galvanized Panel 40-3/4" x 288" (RT124)
10	25-0772	2	Extension Screen 9" x 74"
11	25-0772	2	Extension Screen 9" x 74"
12	25-0749	2	Extension Screen 9" x 48" (RT116)
	25-0770	2	Extension Screen 9" x 72" (RT118)
	25-0773	2	Extension Screen 9" x 96" (RT120)
	25-0772	2	Extension Screen 9" x 74" (RT122, RT124)
13	25-0749	2	Extension Screen 9" x 48" (RT122)
	25-0770	2	Extension Screen 9" x 72" (RT124)
14	25-0972	1	Right Side Frame Gate Cap Weldment
	25-0974	1	Right Side Frame Gate Cap Weldment (12" Higher Sides)
15	25-0744	2	Rear Roof End Cap Mount Plate (With Roof)
16	25-0743	1	Right Gate Mount
17	25-0885	1	Rear Gate Stabilizer Weldment (Without Roof)
18	25-0742	1	Left Gate Mount
19	25-0722	1	Lower Gate Delay Cylinder Mount Bracket (Optional)
20	See Page 56	2	Highway Light Package Kit
21	25-0718	1	Right Apron Shaft Bearing Mount Bracket Weldment
22	25-0179	2	Main Roller Bearing Brace
23	25-0719	1	Left Apron Shaft Bearing Mount Plate
24	25-0971	1	Left Side Frame Gate Cap Weldment
	25-0973	1	Left Side Frame Gate Cap Weldment (12" Higher Sides)
25	See Page 56	1	Highway Light Package Kit
26	See Page 56	1	Highway Light Package Kit
27	705-44.69-24-T	1	Front Right Plywood Floor (RT122)
	705-44.69-48-T	1	Front Right Plywood Floor (RT124)
28	705-46.06-24-B	1	Front Left Plywood Floor (RT122)
	705-46.06-48-B	1	Front Left Plywood Floor (RT124)

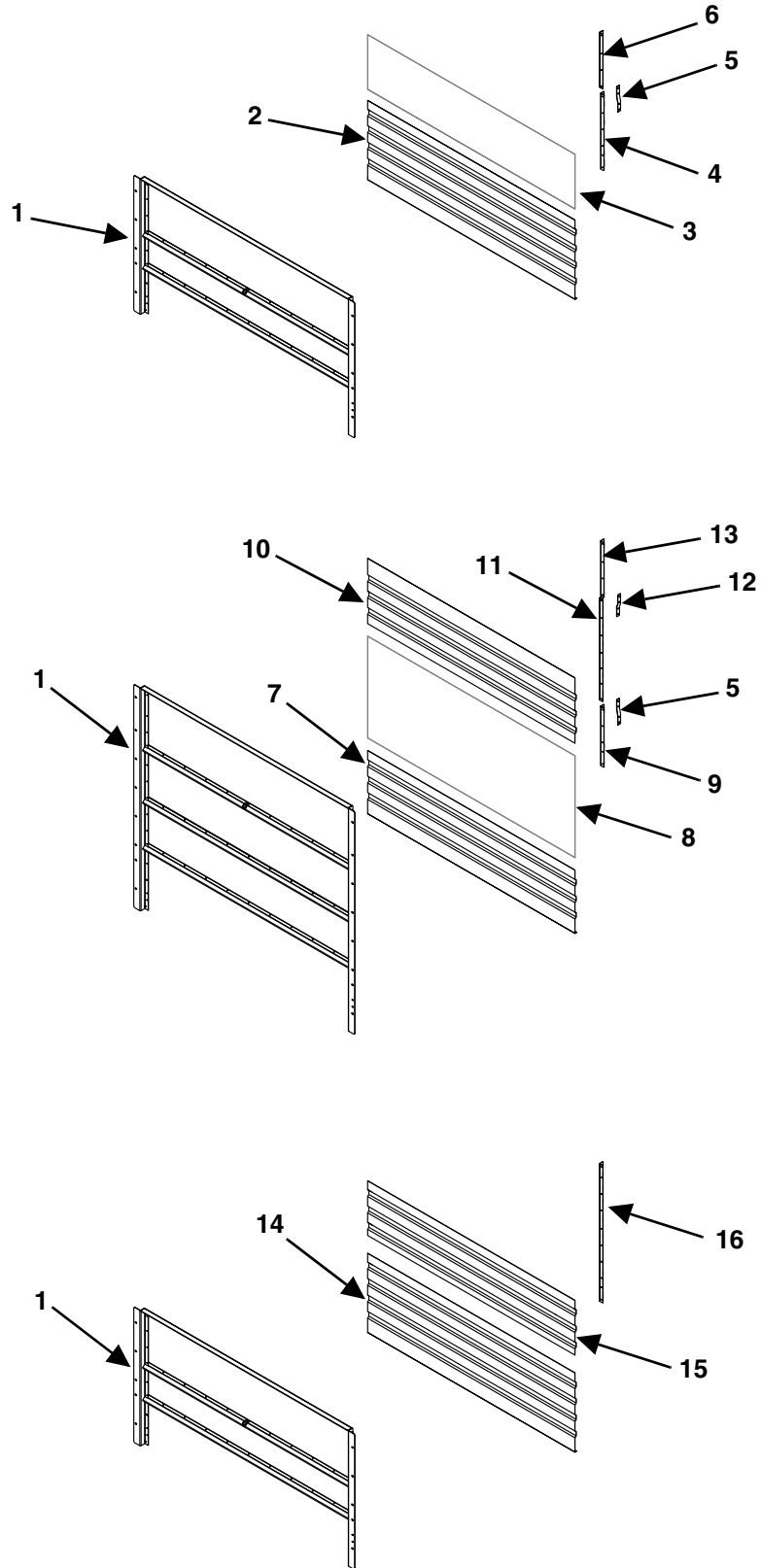
MAIN FRAME (CONT'D)





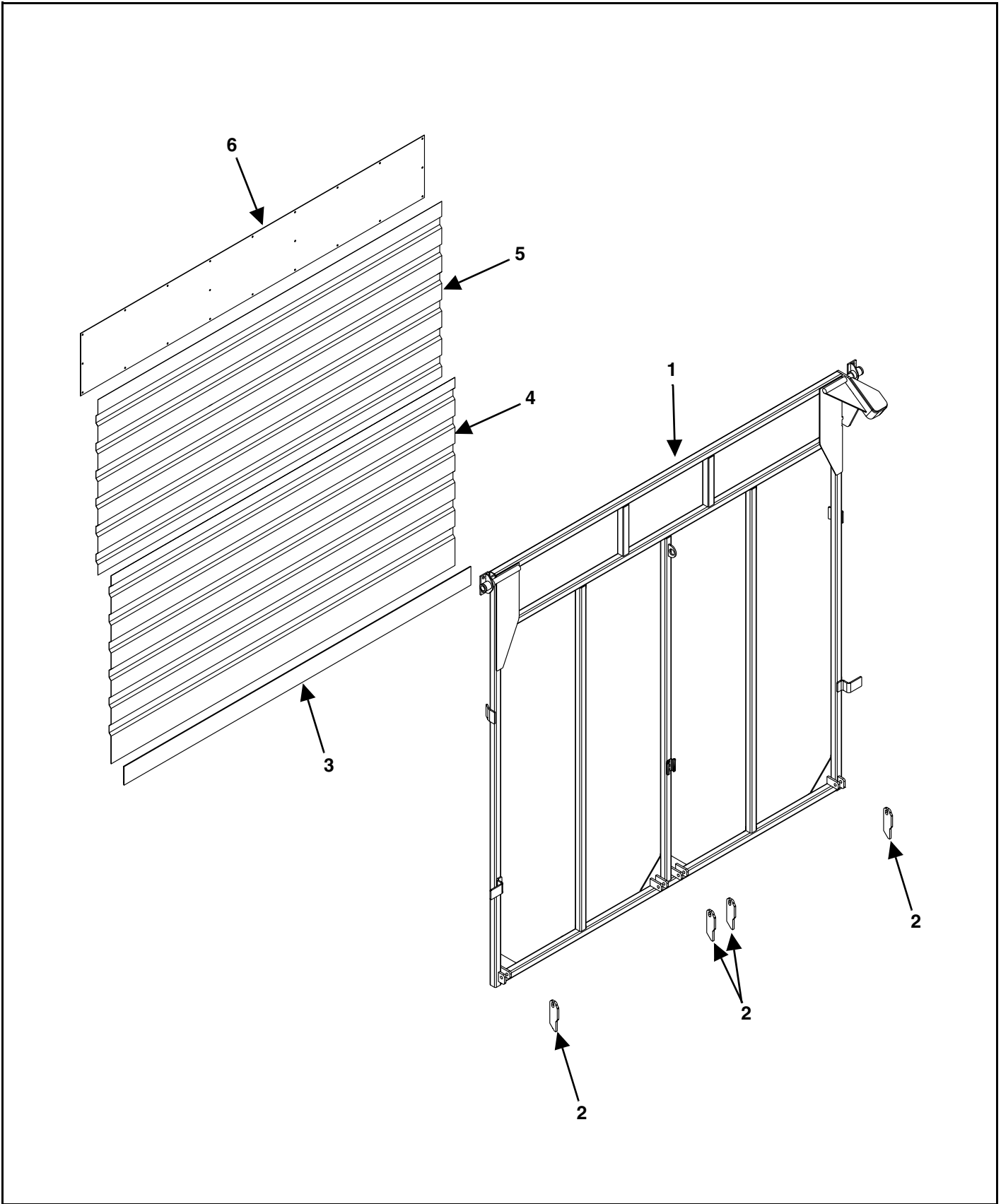
KEY	PART NUMBER	QTY	DESCRIPTION
29	400-1533-1	1	Left Plywood Floor (RT116)
	400-1527-1	1	Left Plywood Floor (RT118)
	400-1528-1	1	Left Plywood Floor (RT120, RT122, RT124)
30	400-1533-2	1	Right Plywood Floor (RT116)
	400-1527-2	1	Right Plywood Floor (RT118)
	400-1528-2	1	Right Plywood Floor (RT120, RT122, RT124)
31	400-1534	1	Poly Floor (RT116)
	400-1530	1	Poly Floor (RT118)
	400-1531	1	Poly Floor (RT120)
	400-1532	1	Poly Floor (RT122)
	500-1517	1	Poly Floor (RT124)
32	400-1501-3	2	Chain Guide End Cap
33	400-1501-1	2	96" Chain Guide (RT116, RT124)
	400-1503-1	2	120" Chain Guide (RT118, RT120, RT122)
34	400-1501-2	2/4	Chain Guide Splice Support (RT116, RT118, RT120/RT122, RT124)
35	400-1501-1	2	96" Chain Guide (RT116, RT118, RT124)
	500-1502-1	2	105-3/4" Chain Guide (RT120)
	500-1501-1	2	81-3/4" Chain Guide (RT122)
36	400-1501-7	2	48" Chain Guide (RT122)
	500-1501-1	2	81-3/4" Chain Guide (RT124)
37	400-1501-4	2	Chain Guide End Cap

# FRONT ENCLOSURE



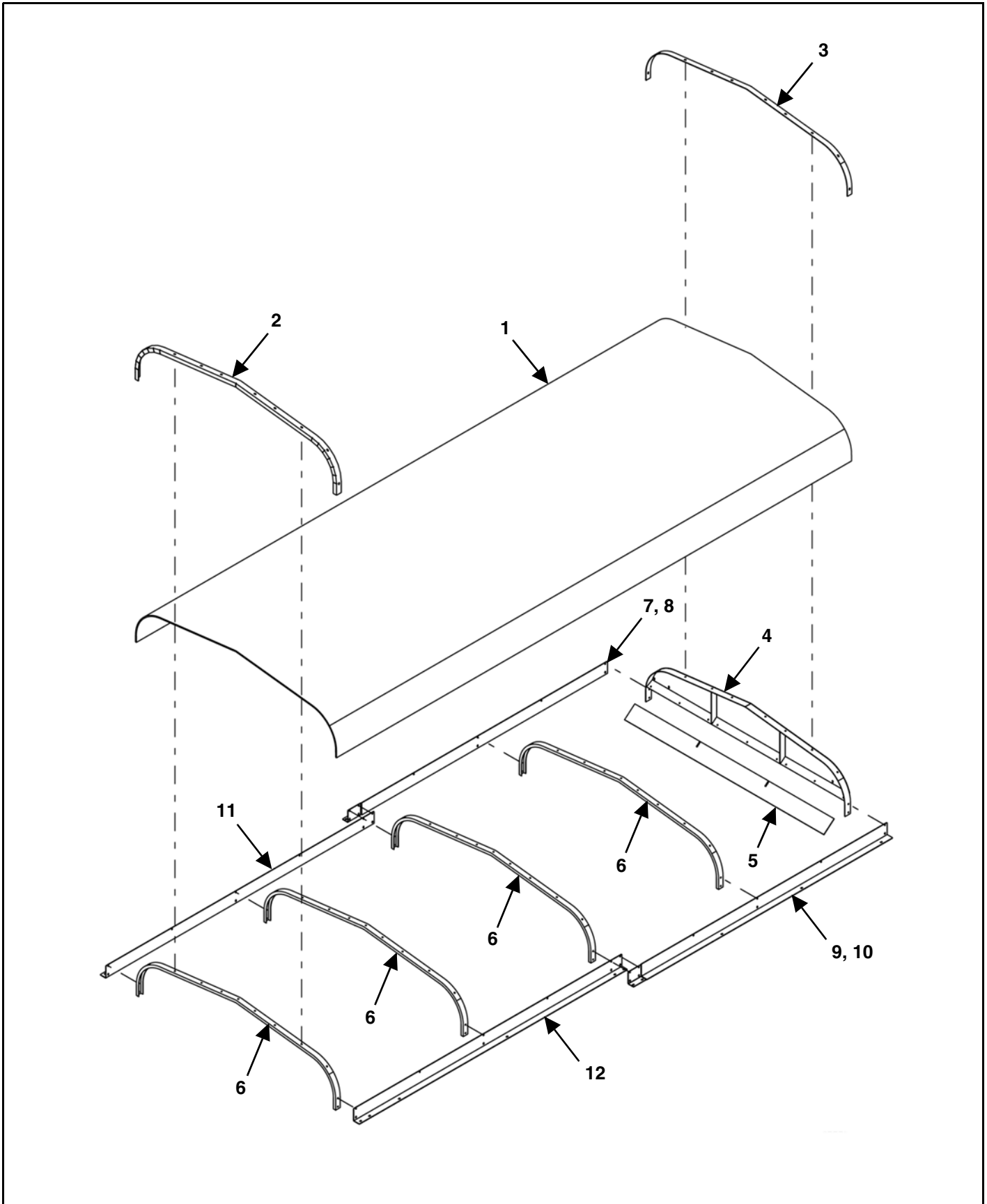
KEY	PART NUMBER	QTY	DESCRIPTION
0	400-1408	1	49-1/2" Mesh Front Enclosure Assembly
	400-1407	1	69-1/2" Mesh Front Enclosure Assembly
	400-1409	1	81-1/2" Mesh Front Enclosure Assembly
	400-1413	1	49-1/2" Solid Front Enclosure Assembly
	400-1414	1	69-1/2" Solid Front Enclosure Assembly
	400-1415	1	81-1/2" Solid Front Enclosure Assembly
1	400-1408-1	1	49-1/2" Front Enclosure Frame Weldment
	400-1407-1	1	69-1/2" Front Enclosure Frame Weldment
	400-1409-1	1	81-1/2" Front Enclosure Frame Weldment
2	400-1407-2	1	Front Enclosure Panel
	400-1406-2	1	Front Enclosure Panel (81-1/2") (Prior to SN 17R1221)
3	400-1408-2	1	Viewing Screen (49-1/2")
	400-1407-3	1	Viewing Screen (69-1/2")
	400-1409-3	1	Viewing Screen (81-1/2") (Prior to SN 17R1221)
4	400-1408-3	1	Formed Angle Bracket
	400-1409-2	1	Formed Angle Bracket (81-1/2") (Prior to SN 17R1221)
5	400-1407-6	1	Bottom Formed Angle Splice
	400-1409-5	1	Bottom Formed Angle Splice (81-1/2") (Prior to SN 17R1221)
6	400-1408-4	1	Top Formed Angle Bracket (49-1/2")
	400-1407-5	1	Top Formed Angle Bracket (69-1/2")
	400-1409-4	1	Top Formed Angle Bracket (81-1/2") (Prior to SN 17R1221)
7	400-1409-6	1	Front Enclosure Panel (SN 17R1221 & Later)
8	400-1409-7	1	Viewing Screen (SN 17R1221 & Later)
9	400-1409-9	1	Bottom Formed Angle Bracket (SN 17R1221 & Later)
10	400-1409-8	1	Front Enclosure Panel (SN 17R1221 & Later)
11	400-1409-10	1	Middle Formed Angle Bracket (SN 17R1221 & Later)
12	400-1409-11	1	Top Formed Angle Splice (SN 17R1221 & Later)
13	400-1408-4	1	Top Formed Angle Bracket (SN 17R1221 & Later)
14	400-1407-2	1	Front Enclosure Panel (49-1/2", 69-1/2")
	400-1406-2	1	Front Enclosure Panel (81-1/2")
15	400-1413-1	1	Front Enclosure Panel (49-1/2")
	761III-40.75-87.5	1	Front Enclosure Panel (69-1/2", 81-1/2")
16	400-1413-2	1	Center Formed Angle (49-1/2")
	400-1410-2	1	Center Formed Angle (69-1/2")
	400-1406-3	1	Center Formed Angle (81-1/2")

# REAR GATE



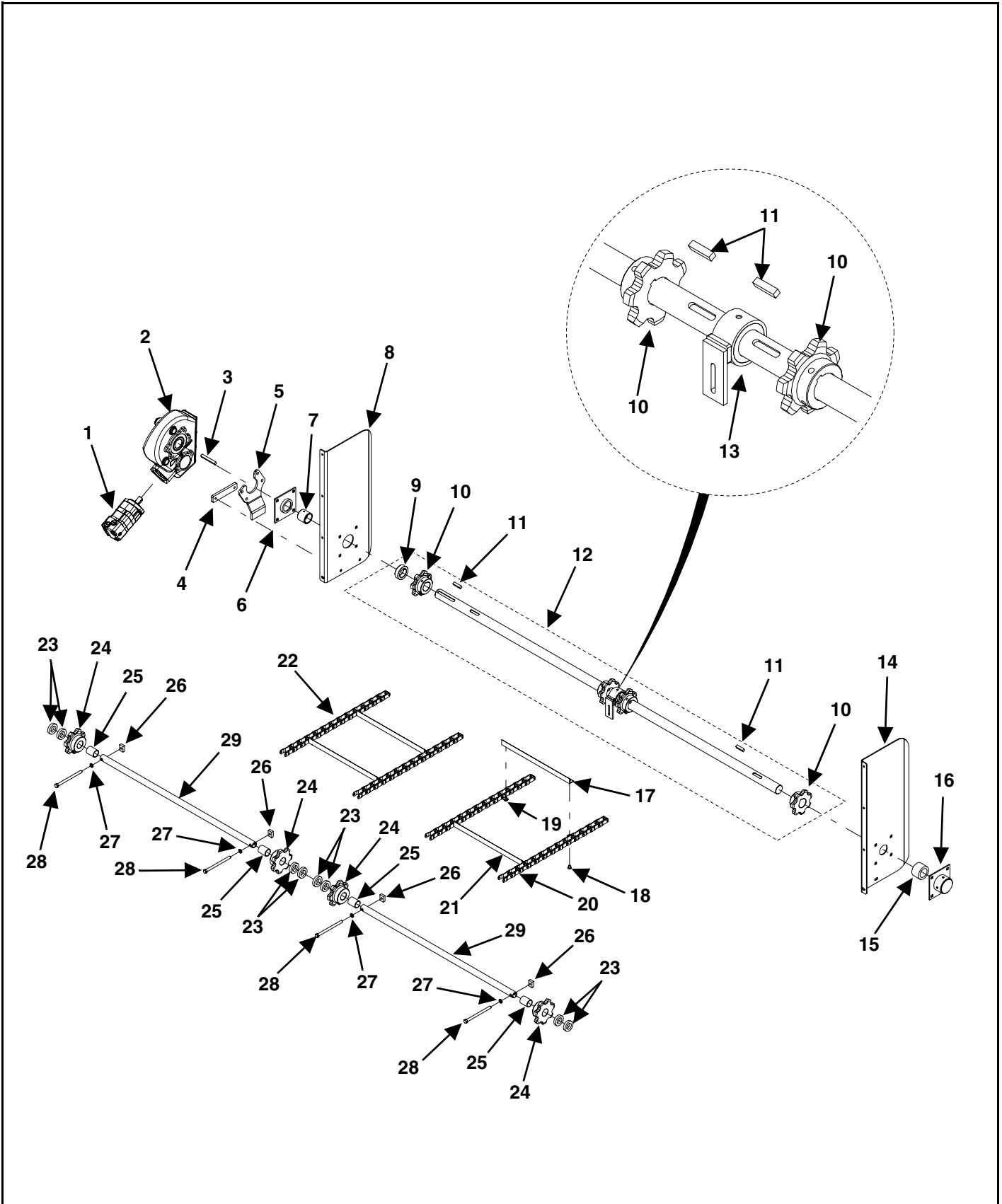
KEY	PART NUMBER	QTY	DESCRIPTION
0	400-1419	1	Complete Rear Swing Gate
	400-1420	1	Complete Rear Swing Gate (12" Higher Sides Option)
1	400-1419-1	1	Rear Swing Gate Frame With Latches
	400-1420-1	1	Rear Swing Gate Frame With Latches (12" Higher Sides Option)
2	100-9990-25-12	4	Gate Latch
	851-5013-2.75Z	4	1/2"-13 x 2-3/4" Bolt
	814-5013-Z	4	1/2"-13 Center Lock Nut
	805-0050-Z	24	1/2" Flat Washer
3	49-0324	1	Belting
4	7611I-40.75-86	1	Panel
5	400-1420-2	1	Panel
6	400-1401-3	1	Upper Panel (12" Higher Sides Option)

# ROOF ASSEMBLY



KEY	PART NUMBER	QTY	DESCRIPTION
0	400-1338	1	Complete Roof Assembly (16')
	400-1334	1	Complete Roof Assembly (18')
	400-1335	1	Complete Roof Assembly (20')
	400-1336	1	Complete Roof Assembly (22')
1	100-9990-14-2	4	17'2" Ribbed Steel Roof Sheet (16')
	100-9990-15-8	4	19'2" Ribbed Steel Roof Sheet (18')
	100-9990-51-1	4	21'2" Ribbed Steel Roof Sheet (20')
	100-9990-54-1	4	23'2" Ribbed Steel Roof Sheet (22')
2	400-1313-2	1	Front Roof Cap
3	400-1313-8	1	Roof Guard Strap
4	400-1313-7	1	Rear Roof End Cap
5	49-0313	1	Rear Roof Cap Belt
6	400-1313-1	4	Roof Bow (RT116, RT118)
	400-1313-1	5	Roof Bow (RT120)
	400-1313-1	6	Roof Bow (RT122)
7	400-1313-6	1	Rear Right Roof Rail (16')
	400-1314-4	1	Rear Right Roof Rail (18')
	400-1315-4	1	Rear Right Roof Rail (20')
	400-1316-6	1	Rear Right Roof Rail (22')
8	400-1315-2	1	Center Right Roof Rail (20') (Not Illustrated)
	400-1316-4	1	Center Right Roof Rail (22') (Not Illustrated)
9	400-1313-5	1	Rear Left Roof Rail (16')
	400-1314-3	1	Rear Left Roof Rail (18')
	400-1315-3	1	Rear Left Roof Rail (20')
	400-1316-5	1	Rear Left Roof Rail (22')
10	400-1315-1	1	Center Left Roof Rail (20') (Not Illustrated)
	400-1316-3	1	Center Left Roof Rail (22') (Not Illustrated)
11	400-1335-2	1	Front Right Roof Rail (16', 20')
	400-1334-2	1	Front Right Roof Rail (18')
	400-1336-2	1	Front Right Roof Rail (22')
12	400-1335-1	1	Front Left Roof Rail (16', 20')
	400-1334-1	1	Front Left Roof Rail (18')
	400-1336-1	1	Front Left Roof Rail (22')

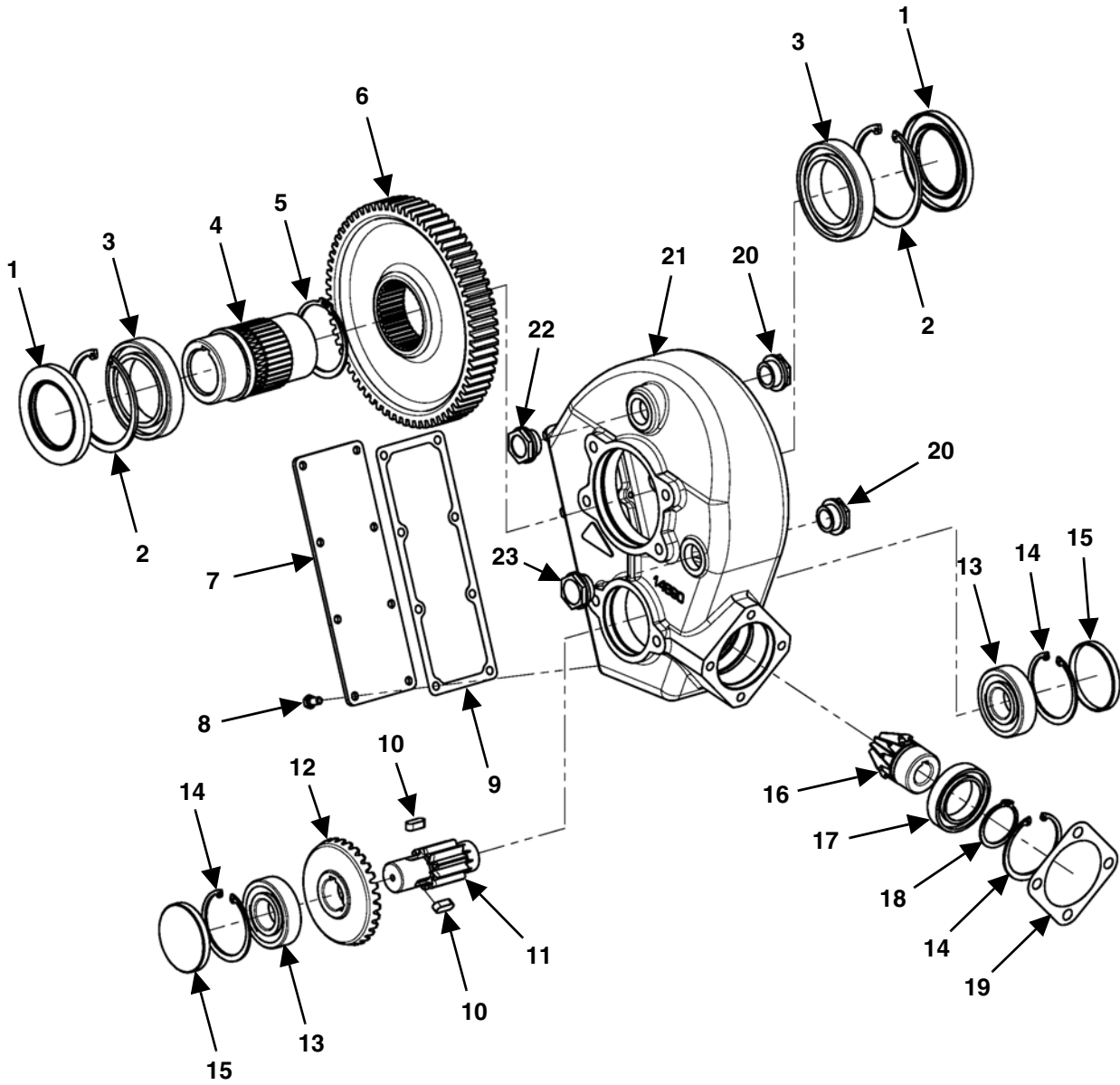
# MAIN APRON DRIVE SYSTEM





KEY	PART NUMBER	QTY	DESCRIPTION
1	See Page 52	1	Hydraulic System (Prior to SN 17R1221, Excluding SN 17R1214)
	See Page 54	1	Hydraulic System (SN 17R1221 & Later, Including SN 17R1214)
2	See Page 50	1	Main Apron Gearbox
3	135-5050-4-1	1	1/2" x 1/2" x 4" Square Machine Key
4	25-0872	1	Torque Arm Retainer
5	25-0783	1	Rear Drive Torque Arm
6	14-0310	1	Rear Apron Bearing Assembly With Bushing
7	13-0029	1	Bronze Bushing
8	25-0718	1	Right Rear Apron Shaft Bearing Bracket Weldment
9	921-0008	1	2" ID Set Screw Collar
10	110-667B7-2.00-3	4	667B7 2.25" Pitch Sprocket 2.00" Bore / 0.500" Key
11	35-0008	4	1/2" x 1/2" x 2" Square Key
12	23-0319	1	Rear Main Roller Assembly
13	14-0054	1	Center Main Drive Bearing Assembly With Nylon Bearing
	14-0053-2	1	Nylon Bearing
14	25-0719	1	Left Rear Apron Shaft Bearing Bracket
15	14-0053-2	1	Nylon Bearing
16	14-0061	1	Rear Apron Bearing Assembly With Nylon Bearing
17	11-0400-1	AR	Main Apron Slat
18	11-0008-2	AR	Rivet, 3/8" x 1"
19	11-0008-3-D	AR	Attachment Link-D667X
20	11-0008-1-D	AR	Pintle Chain Link-D667X
21	11-0400	AR	Chain Slat With Attachments-667X
22	11-0405-1	2	Main Apron Chain Assembly
	11-0406-1	2	Chain Extension (RT118, RT124) (Used In Conjunction With 11-0405-1)
	11-0407-1	2	Chain Extension (RT120) (Used In Conjunction With 11-0405-1)
	11-0408-1	2	Chain Extension (RT122, RT124) (Used In Conjunction With 11-0405-1)
23	33-0310	8	Front Idler Pipe Spacer
24	110-667B7-1.38-1	4	667B7 2.25" Pitch Sprocket 1.38" Bore With Bushing
25	13-0030	4	Bushing
26	25-0147	4	Main Apron Tightener Nut
27	822-0050-Z	4	1/2" Split Lock Washer
28	830-5013-7Z	4	1/2"-13 x 7" Fully Threaded Bolt
29	23-0317-1	2	Front Idler Pipe

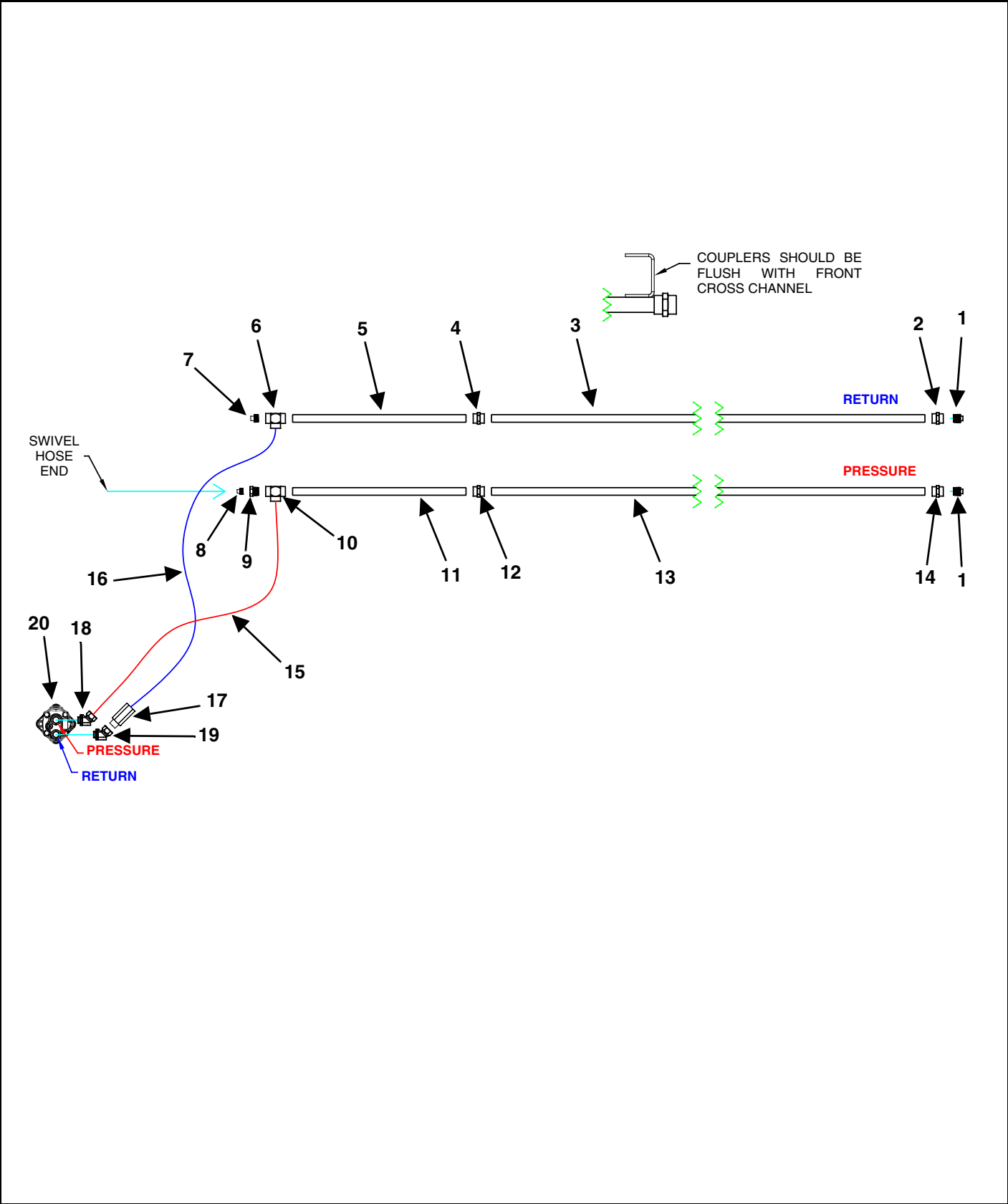
# MAIN APRON GEARBOX



USE EP 80W-90 OIL

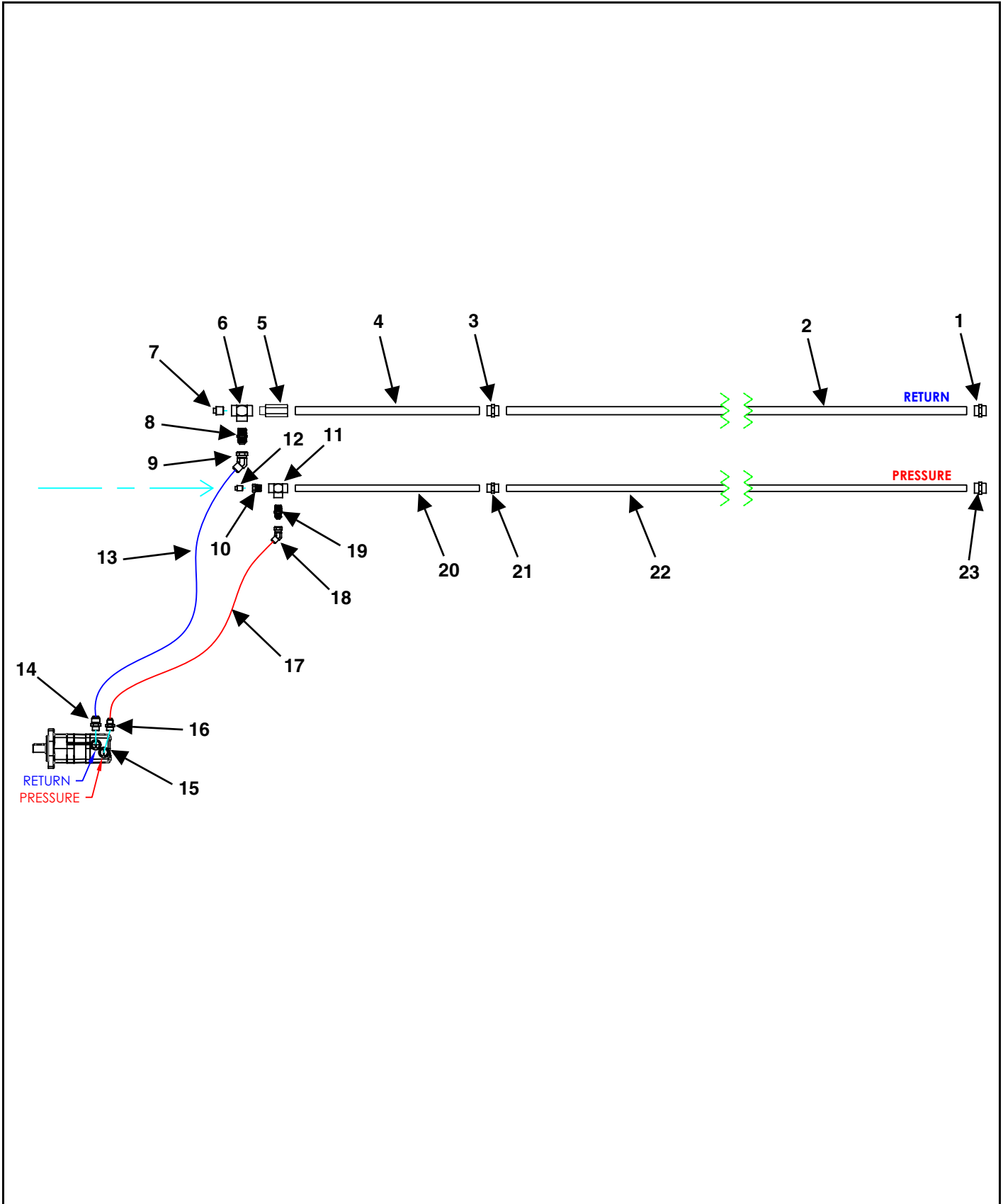
KEY	PART NUMBER	QTY	DESCRIPTION
0	19-0201	1	21.1:1 Berma Gearbox
1	19-0201-11	2	Oil Seal
2	19-0201-6	2	Snap Ring
3	19-0201-5	2	Bearing
4	19-0201-2	1	Hub 2"
5	19-0201-4	1	Snap Ring
6	19-0201-3	1	Gear
7	19-0201-14	1	Cover
8	619-0001-27	8	M8 x 16 Hex Head Screw
9	19-0201-13	1	Gasket
10	19-0201-9	2	Key
11	19-0201-7	1	Pinion
12	19-0201-8	1	Gear
13	619-0001-15	2	Bearing
14	619-0001-16	3	Snap Ring
15	619-0001-22	2	Cap Plug
16	19-0201-10	1	Pinion
17	619-0012-2	1	Bearing
18	619-0001-19	1	Snap Ring
19	619-0001-28	1	Gasket
20	19-0201-12	2	Fill Plug
21	19-0201-1	1	Housing
22	619-0001-20	1	Breather Plug
23	619-0001-21	1	Sight Plug

**HYDRAULIC SYSTEM  
(PRIOR TO SN 17R1221, EXCLUDING SN17R1214)**



KEY	PART NUMBER	QTY	DESCRIPTION
1	55-0075	2	3/4" Poly Plug (Trailer/Truck Models)
2	155-5000-12-12	1	Straight Coupler
3	55-0319	1	3/4" Schedule 40 Pipe 204" Long (RT118)
	55-0317	1	3/4" Schedule 40 Pipe 228" Long (RT120, RT122)
4	155-5000-12-12	1	Straight Coupler (RT122)
5	655-0008	1	3/4" Schedule 40 Pipe 24" Long (RT122)
6	55-0027	1	3/4" 90° Elbow (Wagon Models)
	55-0079	1	3/4" Tee (Trailer/Truck Models)
7	55-0081	1	Square Head Plug (Trailer/Truck Models)
8	955-3809	1	3/8" Square Head Plug (Without Gate Delay Only)
9	155-5406-08-06	1	1/2"-3/8" Pipe Reducer Bushing (Wagon Models)
	155-5406-12-6	1	3/4"-3/8" Pipe Reducer Bushing (Trailer/Truck Models)
10	55-0011	1	1/2" Tee (Wagon Models)
	55-0079	1	3/4" Tee (Trailer/Truck Models)
11	55-0074	1	1/2" Schedule 40 Pipe 24" Long (RT122) (Wagon Models)
	655-0008	1	3/4" Schedule 40 Pipe 24" Long (RT122) (Trailer/Truck Models)
12	155-5000-08-08	1	Straight Coupler (RT122) (Wagon Models)
	155-5000-12-12	1	Straight Coupler (RT122) (Trailer/Truck Models)
13	55-0321	1	1/2" Schedule 40 Pipe 204" Long (RT118) (Wagon Models)
	55-0322	1	1/2" Schedule 40 Pipe 228" Long (RT120, RT122) (Wagon Models)
	55-0319	1	3/4" Schedule 40 Pipe 204" Long (RT118) (Trailer/Truck Models)
	55-0317	1	3/4" Schedule 40 Pipe 228" Long (RT120, RT122) (Trailer/Truck Models)
14	55-0039	1	Straight Coupler (Wagon Models)
	155-5000-12-12	1	Straight Coupler (Trailer/Truck Models)
15	155-08R17-48-1	1	1/2" x 48" Hose (Wagon Models)
	655-0025	1	3/4" x 48" Hose (Trailer/Truck Models)
16	655-0025	1	3/4" x 48" Hose
17	55-0007-B	1	3/4" Check Valve
18	155-6902-10-08	1	45° Bulkhead Adaptor (Wagon Models)
	155-6902-10-12	1	45° Bulkhead Adaptor (Trailer/Truck Models)
19	155-6902-10-12	1	45° Bulkhead Adaptor
20	RT-WHITE-KIT	1	White Motor Update Kit (Wagon Models)
	RT-WHITE-KIT-TR	1	White Motor Update Kit (Trailer/Truck Models)

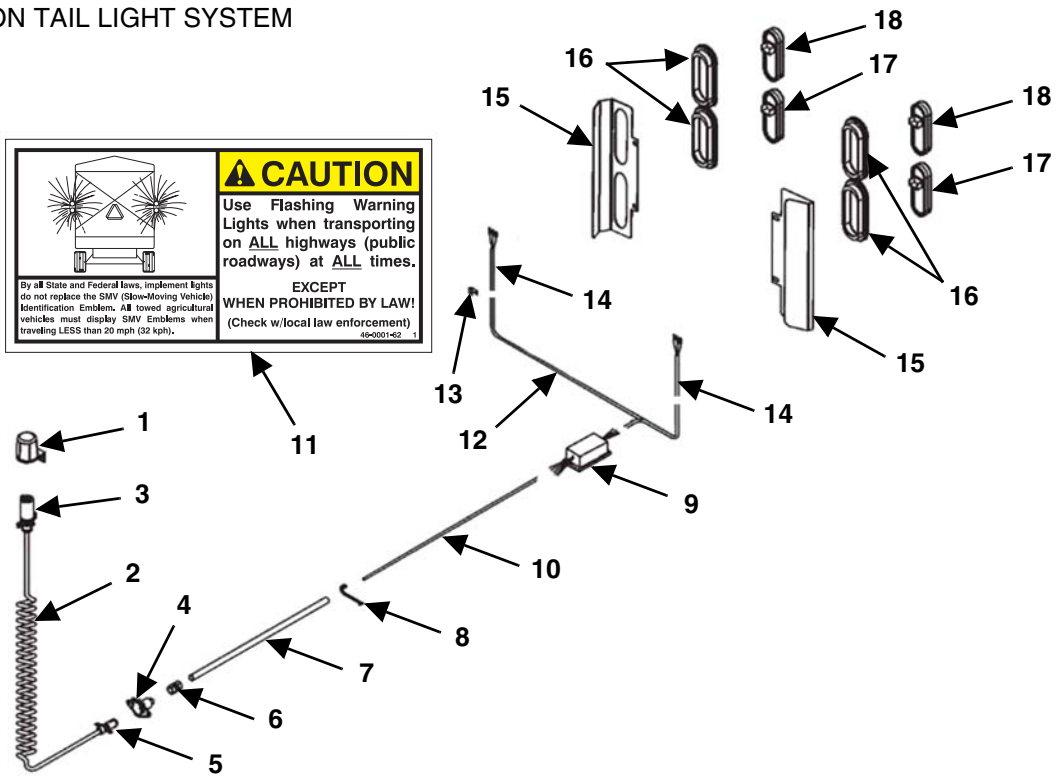
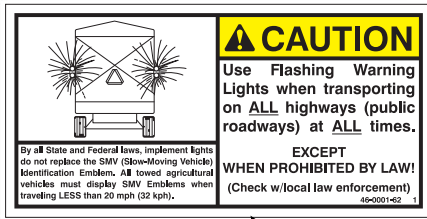
HYDRAULIC SYSTEM  
(SN 17R1221 & LATER, INCLUDING SN17R1214)



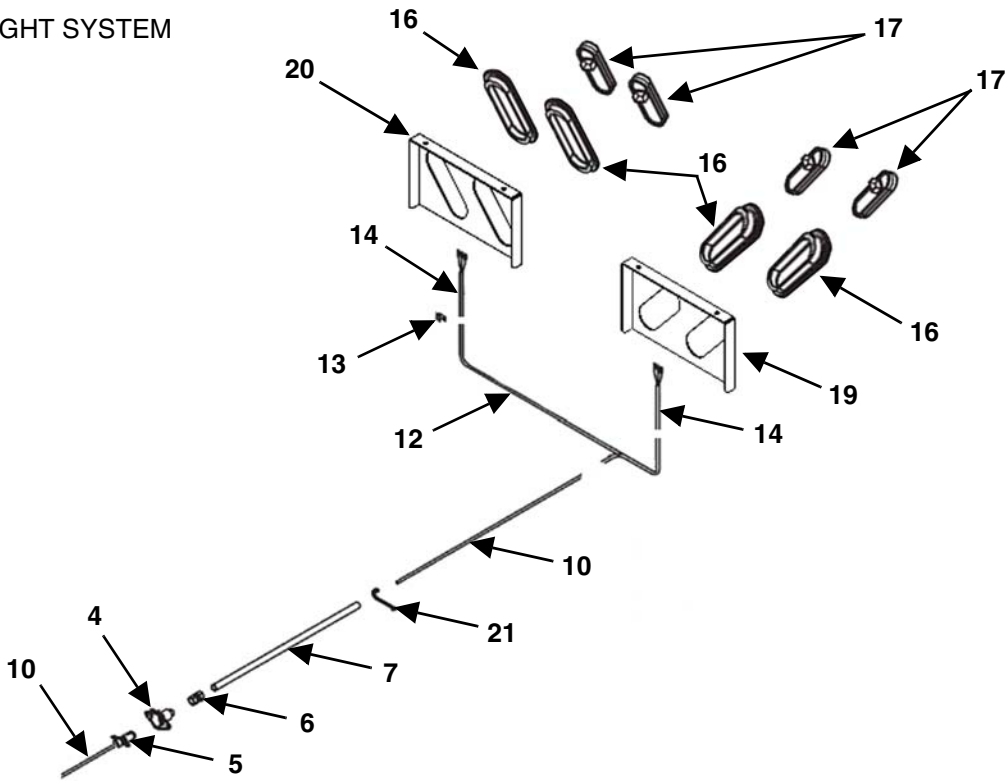
KEY	PART NUMBER	QTY	DESCRIPTION
1	155-5000-12-12	1	Straight Coupler
2	55-0318	1	3/4" Schedule 40 Pipe 180" Long (RT116)
	55-0319	1	3/4" Schedule 40 Pipe 204" Long (RT118)
	55-0317	1	3/4" Schedule 40 Pipe 228" Long (RT120, RT122, RT124)
3	155-5000-12-12	1	Straight Coupler (RT122, RT124)
4	655-0008	1	3/4" Schedule 40 Pipe 24" Long (RT122)
	55-0070	1	3/4" Schedule 40 Pipe 48" Long (RT124)
5	55-0007-B	1	3/4" Check Valve
6	55-0079	1	3/4" Tee
7	55-0081	1	Square Head Plug
8	155-2404-12-12	1	Straight Adapter Union
9	155-6502-12	1	45° Swivel Elbow
10	155-5406-08-06	1	1/2"-3/8" Pipe Reducer Bushing (Wagon Models)
	155-5406-12-6	1	3/4"-3/8" Pipe Reducer Bushing (Trailer/Truck Models)
11	55-0011	1	1/2" Tee (Wagon Models)
	55-0079	1	3/4" Tee (Trailer/Truck Models)
12	955-3809	1	3/8" Square Head Plug (Without Gate Delay Only)
13	155-12R17-37.5-1	1	3/4" x 37-1/2" Hose
14	155-6400-12-10	1	Straight Adapter
15	155-WS-12.3-1	1	White WS Series Hydraulic Motor 12.3 Cubic Inches
	155-WS-SK-1	1	White Hydraulic Motor 12.3 Cubic Inches Seal Kit
16	155-6400-08-10	1	Straight Adapter (Wagon Models)
	155-6400-12-10	1	Straight Adapter (Trailer/Truck Models)
17	155-08R17-35.5-1	1	1/2" x 35-1/2" Hose (Wagon Models)
	155-12R17-35.5-1	1	3/4" x 35-1/2" Hose (Trailer/Truck Models)
18	155-6502-08-08	1	45° Swivel Elbow (Wagon Models)
	155-6502-12	1	45° Swivel Elbow (Trailer/Truck Models)
19	155-2404-08-08	1	Straight Adapter Union (Wagon Models)
	155-2404-12-12	1	Straight Adapter Union (Trailer/Truck Models)
20	55-0074	1	1/2" Schedule 40 Pipe 24" Long (RT122)(Wagon Models)
	55-0071	1	1/2" Schedule 40 Pipe 48" Long (RT124)(Wagon Models)
	655-0008	1	3/4" Schedule 40 Pipe 24" Long (RT122)(Trailer/Truck Models)
	55-0070	1	3/4" Schedule 40 Pipe 48" Long (RT124)(Trailer/Truck Models)
21	155-5000-08-08	1	Straight Coupler (RT122, RT124)(Wagon Models)
	155-5000-12-12	1	Straight Coupler (RT122, RT124)(Trailer/Truck Models)
22	55-0320	1	1/2" Schedule 40 Pipe 180" Long (RT116)(Wagon Models)
	55-0321	1	1/2" Schedule 40 Pipe 204" Long (RT118)(Wagon Models)
	55-0322	1	1/2" Schedule 40 Pipe 228" Long (RT120, RT122, RT124)(Wagon Models)
	55-0318	1	3/4" Schedule 40 Pipe 180" Long (RT116)(Trailer/Truck Models)
	55-0319	1	3/4" Schedule 40 Pipe 204" Long (RT118)(Trailer/Truck Models)
	55-0317	1	3/4" Schedule 40 Pipe 228" Long (RT120, RT122, RT124) (Trailer/Truck Models)
23	55-0039	1	Straight Coupler (Wagon Models)
	155-5000-12-12	1	Straight Coupler (Trailer/Truck Models)

# HIGHWAY LIGHT PACKAGE KIT

## TRAILER / WAGON TAIL LIGHT SYSTEM



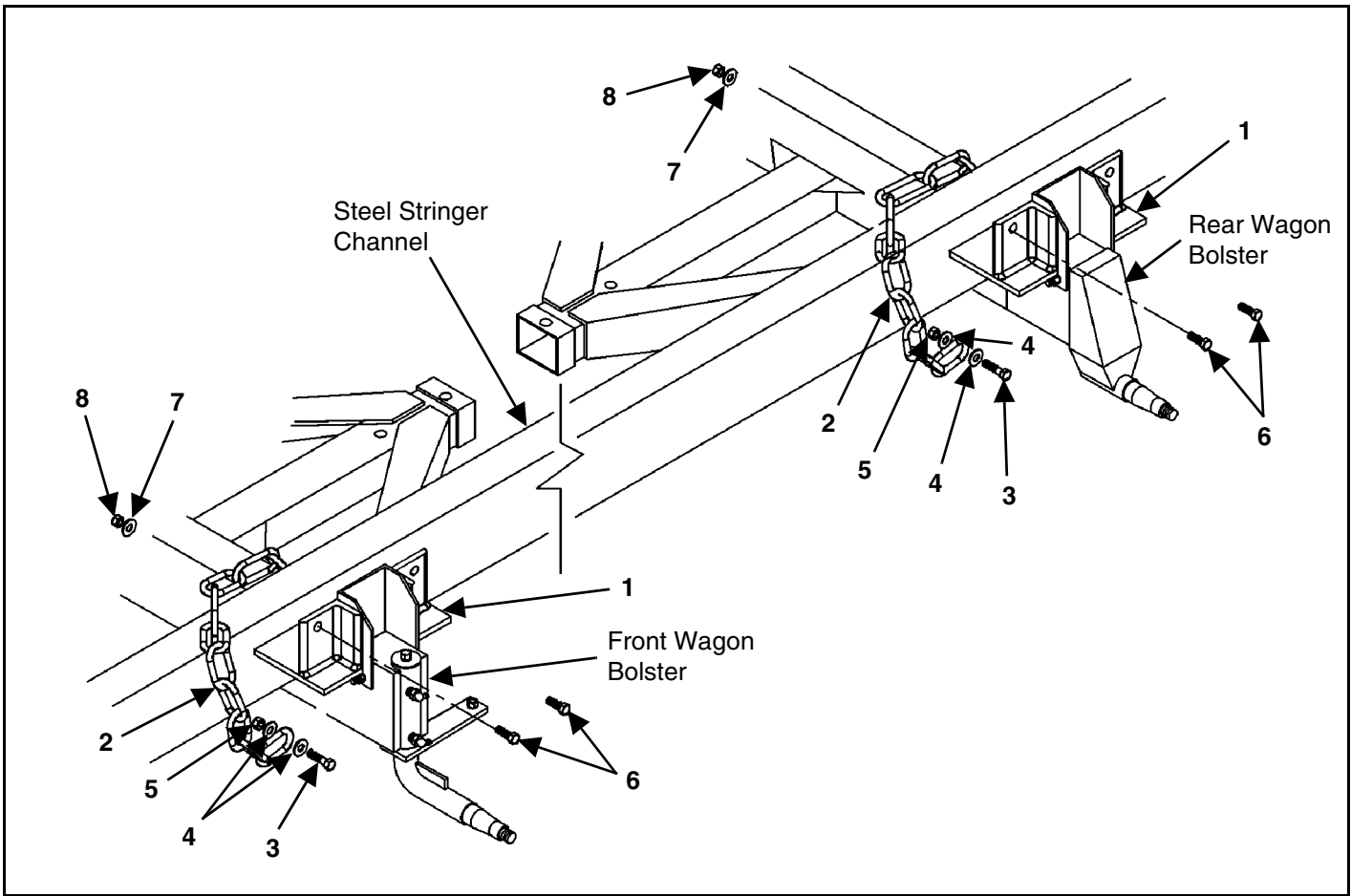
## TRUCK TAIL LIGHT SYSTEM





KEY	PART NUMBER	QTY	DESCRIPTION
0	52-0019-LED-PKG	1	Trailer/Wagon LED Light Package
	52-0035-RT-LED-PKG	1	Truck LED Light Package
1	56-0009	1	Store-A-Way Plug Holder (7 Pole Plug)
2	56-0005	1	Coil Cable Assembly
3	56-0005-4	1	7-Contact Plug Only
4	56-0004	1	4-Pin Socket
5	56-0005-1	1	4 Pole Plug
6	56-0007	1	1/2" EMT Coupler
7	56-0056	1	Light Wire Tube 1/2" Diameter x 24-5/16" Long
8	56-0033	2	3/4" Loom Clamp
9	56-0084	1	LED Enhancer Module With Connectors
10	56-0037	AR	4 Conductor Trailer Cable
11	46-0001-62	1	Caution Tail Light Decal
12	56-0130-1	1	Y-Harness Less Light Plug Leads
13	32-0024	2	3/8" Plated Loom Clamp
14	56-0130-2	2	Right/Left Light Pigtail Lead
15	25-0259	2	Light Mount Bracket
16	56-0082	4	Oval Grommet
	56-0115	2	6" 7-Diode Oval Lamp With Red LED Lumen (Trailer/Wagon Mount)
	56-0115	4	6" 7-Diode Oval Lamp With Red LED Lumen (Truck Mount)
18	56-0081	2	6" 7-Diode Oval Lamp With Amber LED Lumen
19	25-0854	1	Rear Left Light Mount
20	25-0853	1	Rear Right Light Mount
21	56-0053	2	1/4" Vinyl Coated Steel Clamp

## STEEL STRINGER TIE DOWN KIT



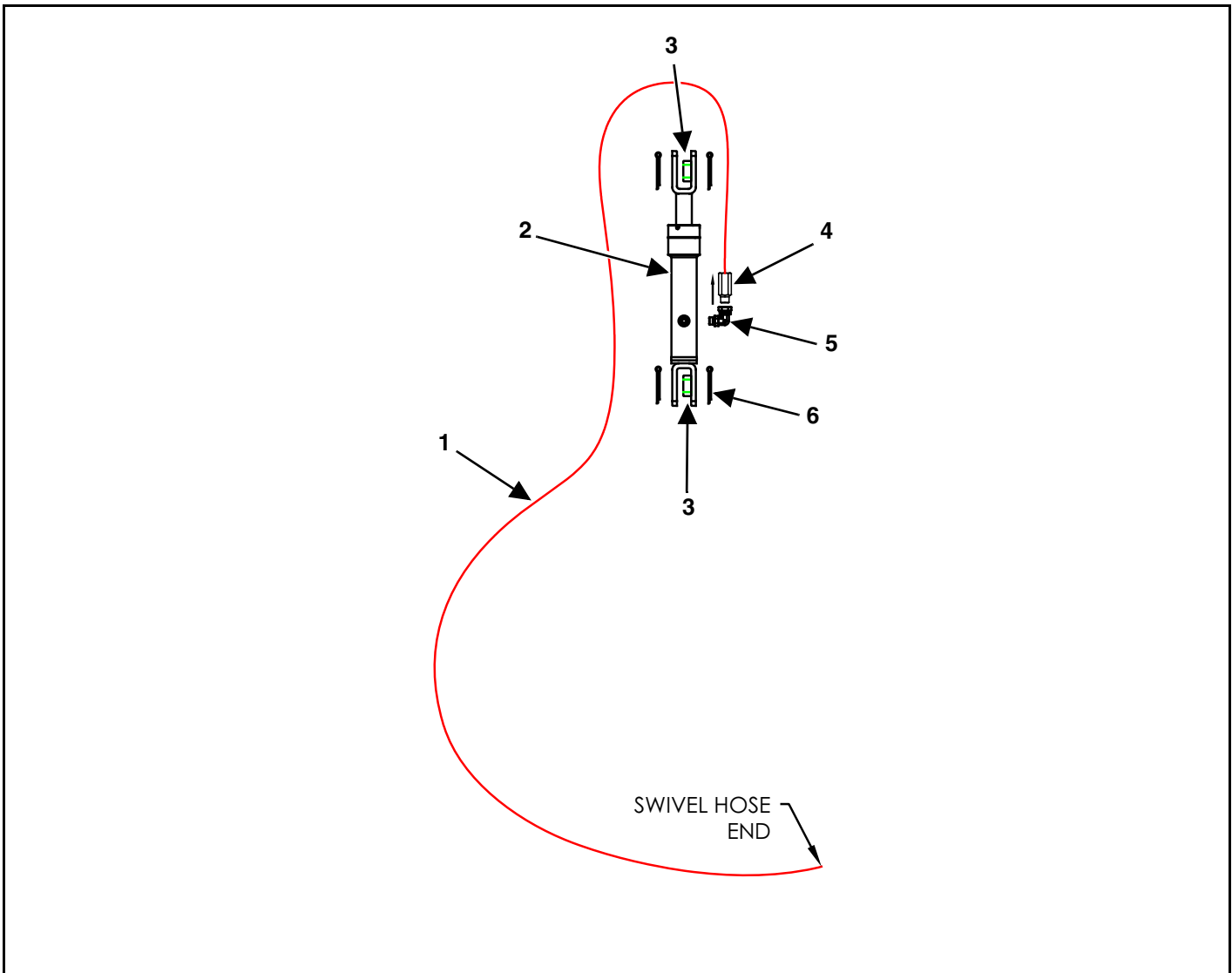
KEY	PART NUMBER	QTY	DESCRIPTION
0	52-0003S	1	Tie Down Kit (Steel Stringers)
1	75-5015	4	Standard Tie Down Bracket
2	75-0341-4-HD	4	61" Heavy Duty Tie Down Chain
	75-5006-3	4	68" Heavy Duty Tie Down Chain For Riser Option
3	851-3816-1.5Z	4	Bolt, Hex Machine - 3/8" x 1-1/2"
4	805-0038-Z	8	3/8" Flat Washer
5	815-3816-Z	4	3/8" Lock Nut
6	851-5013-1.5-Z	8	1/2" x 1-1/2" Hex Machine Bolt
7	805-0050-Z	8	1/2" Flat Washers
8	815-5013-Z	8	1/2" Lock Nuts

## 10.0 OPTIONAL EQUIPMENT



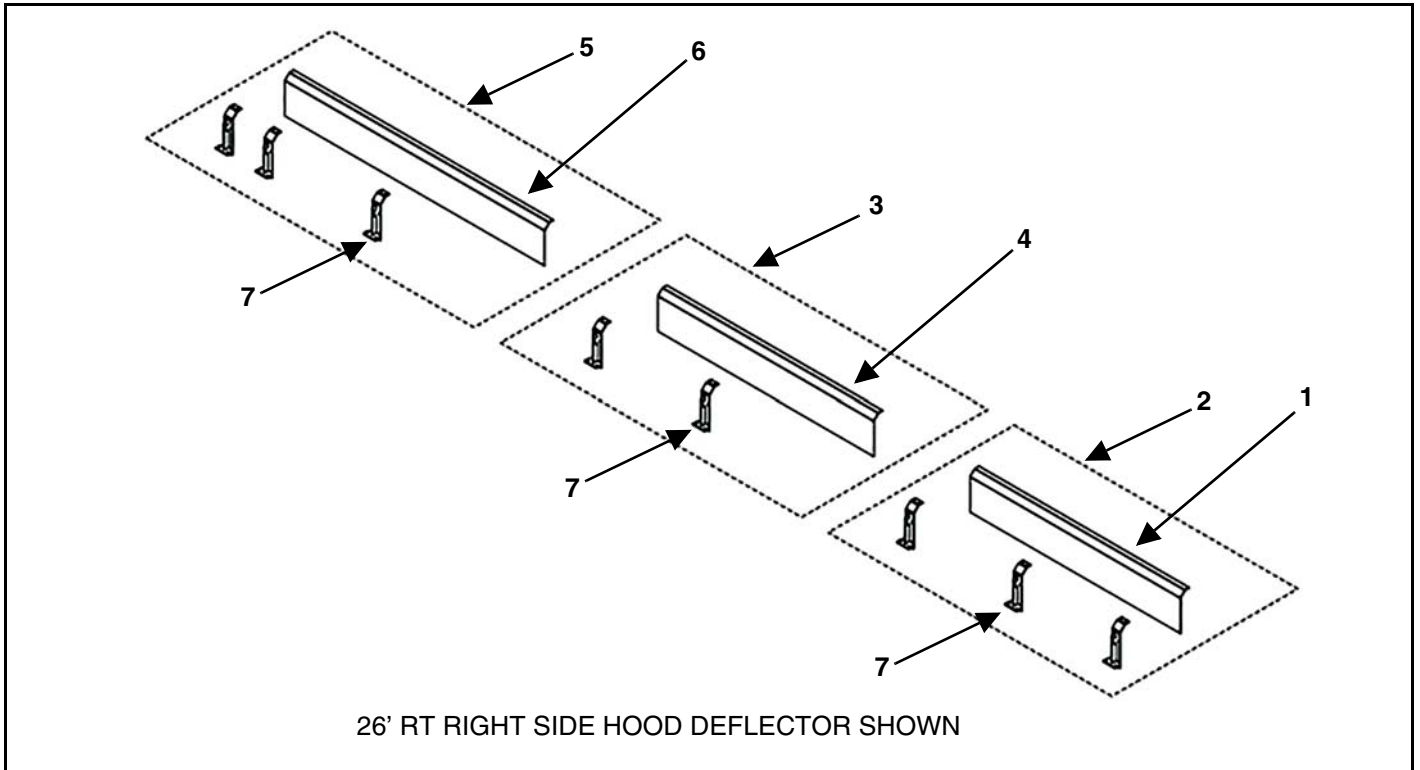
DESCRIPTION	PAGE #
REAR GATE DELAY	See Page 60
SIDE HOOD DEFLECTOR	See Page 61

## REAR GATE DELAY



KEY	PART NUMBER	QTY	DESCRIPTION
0	RT-GDS-P-KIT	1	Pressure Side Rear Gate Delay Closing Option
1	155-04R17-158-1	1	1/4" x 158" Hose
2	155-D-1.25-8-1	1	1-1/4" x 8" Hydraulic Cylinder With Pins Update (Prior to SN 18R1219)
	155-D-1.25-8-1	1	1-1/4" x 8" Hydraulic Cylinder With Pins (SN 18R1219 & Later)
	155-D-1.25-SK	1	Displacement Hydraulic Cylinder Seal Kit
3	33-0309	2	Cylinder Pin Spacer
4	55-CV-375-1	1	Check Valve
5	155-6901-06-06	1	90 Degree Adapter Fitting
6	823-19-2	4	3/16" x 2" Cotter Pin
NS	32-0033	4	1/2" Loom Clamp
NS	65-0006-5	5	14" Nylon Tie Strap
NS	810-2520-Z	4	1/4" Spin Locknut
NS	851-2520-.75Z	4	1/4" x 3/4" Machine Bolt

## SIDE HOOD DEFLECTOR



KEY	PART NUMBER	QTY	DESCRIPTION
0	RT-SHD-16-RS	1	16' RT Side Hood Deflector (Right Side) (Swing Gate)
	RT-SHD-18-RS	1	18' RT Side Hood Deflector (Right Side) (Swing Gate)
	RT-SHD-20-RS	1	20' RT Side Hood Deflector (Right Side) (Swing Gate)
	RT-SHD-22-RS	1	22' RT Side Hood Deflector (Right Side) (Swing Gate)
	RT-SHD-24-RS	1	24' RT Side Hood Deflector (Right Side) (Swing Gate)
1	25-0891	1	Right Side Hood Deflector Front Assembly
2	25-0891-1	1	Side Hood Deflector Front Panel
3	25-0892	1	Right Side Hood Deflector Middle Assembly (18', 20', 22', 24')
4	25-0892-1	1	Side Hood Deflector Middle Panel (18', 20', 22', 24')
5	25-0895	1	Right Side Hood Deflector Rear Assembly (16', 24')
	25-0897	1	Right Side Hood Deflector Rear Assembly (18')
	25-0893	1	Right Side Hood Deflector Rear Assembly (20')
	25-0894	1	Right Side Hood Deflector Rear Assembly (22')
6	25-0895-1	1	Side Hood Deflector Rear Panel (16', 24')
	25-0897-1	1	Side Hood Deflector Rear Panel (18')
	25-0893-1	1	Side Hood Deflector Rear Panel (20')
	25-0894-1	1	Side Hood Deflector Rear Panel (22')
7	25-0890	5	Side Hood Deflector Support Bracket Weldment (16')
	25-0890	6	Side Hood Deflector Support Bracket Weldment (18', 20')
	25-0890	7	Side Hood Deflector Support Bracket Weldment (22', 24')



## 11.0 SPECIFICATIONS

SPECIFICATIONS	RT116	RT118	RT120	RT122
Floor Length	16' 6"	18' 6"	20' 6"	22' 6'
Overall Length - std roof	17' 6"	19' 6"	21' 6"	23' 6"
Main Apron	667 X	667 X	667 X	667 X
Overall Width	101"			
Inside Width	89.5"			
Power Source	Hydraulic Gear Drive			
Drive Shaft Diameter	2"			
Removable Roof System	Standard			
<b>Overall Height</b>				
Standard sides / roof	114.5"			
- 12" taller sides / roof	126.5"			
- Std. sides / no roof	95"			
- 12" taller sides / no roof	107"			
<b>Inside Height</b>				
Standard sides / roof	94.5			
- 12" taller sides / roof	106.5			
- Std. sides / no roof	75"			
- 12" taller sides / no roof	87"			













**Meyer Manufacturing Corporation**

674 W. Business Cty Rd A

Dorchester, WI 54425

Phone: 1-800-325-9103

Fax: 715-654-5513

Email: [sales@meyermfg.com](mailto:sales@meyermfg.com)

Website: [www.meyermfg.com](http://www.meyermfg.com)