

OPERATOR'S AND PARTS MANUAL NO. PB-TSS-AHD-SUP
FOR
TSS SERIES

MEYER

Electric/Hydraulic Controls For TSS Series Forage Boxes



DO NOT OPERATE EQUIPMENT UNTIL THIS MANUAL HAS BEEN READ AND UNDERSTOOD.



MANUFACTURED BY
Meyer Mfg. Corp.

County Hwy. A West
P.O. Box 405
Dorchester, Wisconsin 54425-0405
Phone 715-654-5132 • FAX 715-654-5513
1-800-325-9103
www.meyermfg.com
E-mail: sales@meyermfg.com



GENERAL INFORMATION

This supplement document is to be used in addition to the standard Operators and Parts Manual that was shipped with your machine. The operation, maintenance and parts that are unique to the electric/hydraulic drive and controls are included in this supplement and supercedes the information included in the standard Operators and Parts Manual. Information not shown in this supplement is as indicated in the standard manual.

Where to Find and How to Read Your Serial Number

Your Serial Number is stamped above the discharge opening on the unit discharge end frame.

Example: 11T5242

Model Year / TSS / Series / Sequence of Build




↓ ↓ ↓ ↓
11 T 5 242

FOR PROPER OPERATION HYDRAULIC REQUIREMENTS AS FOLLOWS: MINIMUM-30 GPM @ 3000 PSI



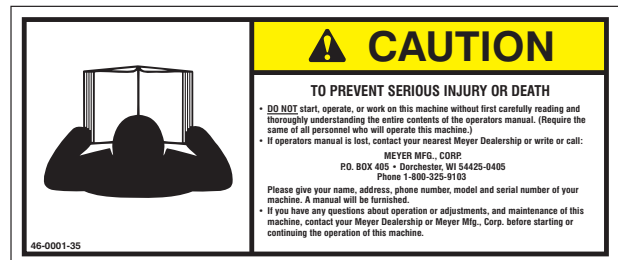
SAFETY FIRST

A brief definition of signal words that are used in this manual is as follows:

-  **DANGER** indicates an imminently hazardous situation which, if not avoided, WILL result in death or serious injury.
-  **WARNING** indicates a potentially hazardous situation which, if not avoided, COULD result in death or serious injury and includes hazards that are exposed when guards are removed.
-  **CAUTION** indicates a potentially hazardous situation which, if not avoided, MAY result in minor or moderate injury. It is also used to alert against unsafe practices.



Decal A. Part No. 46-8500-7



Decal Part No. 46-0001-35


-  **CAUTION:** READ ALL DECALS ON THE FORAGE BOX, IN THIS SUPPLEMENT MANUAL ALONG WITH YOUR STANDARD MANUAL. KEEP THESE DECALS CLEAN AND REPLACE ANY LOST OR DESTROYED DECALS. BECOME FAMILIAR WITH ALL TRACTOR AND FORAGE BOX CONTROLS.

TABLE OF CONTENTS

GENERAL INFORMATION	2
TRACTOR HOOK UP	5
OPERATION	5
EMERGENCY TRIP CABLE OPERATION AND RESET	6
MAINTENANCE	7
LUBRICATION	7
ELECTRICAL COMPONENTS	10
HYDRAULIC COMPONENTS	12
HYDRAULIC COMPONENTS	14
MECHANICAL COMPONENTS	16
MECHANICAL COMPONENTS	18
MECHANICAL COMPONENTS	20
MECHANICAL COMPONENTS (CONTINUED)	22
19-0158-HYD UPPER GEAR BOX ASSEMBLY	24
19-0206 RT160 UPPER GEAR BOX ASSEMBLY	26
MAINTENANCE RECORD	31



Meyer Manufacturing Corporation

574 West Center Avenue

Dorchester, WI 54425

Phone: 1-800-325-9103

Fax: 715-654-5513

Email: sales@meyermfg.com

Website: www.meyermfg.com

TRACTOR HOOK UP

Hydraulic Hoses

1. Connect the two hydraulic hoses from the selector valve (the valve with the safety trip cable connected to it) to a set of tractor hydraulic ports. The forage box hydraulic circuit has a check valve in it to prevent reverse operation, but it is recommended to mark the hoses so they are connected the same each time resulting in familiar operation of the tractor spool valve lever.
2. If an optional cross conveyor extension is used, connect the second pair of hoses to another set of tractor hydraulic ports. It is recommended to mark the hoses so they are connected the same each time resulting in familiar operation of the tractor spool valve lever.

Electric Controller

1. Plug the controller cable into the electric connector on the forage box. See Figure 1.
2. Place or mount the controller in the tractor cab and connect the power cable into the tractor power outlet. See Figure 2.

OPERATION

Start Up

1. If your forage box has an optional cross conveyor extension, lower it with tractor remote valve lever.
2. Using the tractor remote lever that is supplying power to the forage box start unloading the cross conveyor.
3. After the cross conveyor has been unloaded turn the power on/off toggle switch to the on position. The indicator light should be illuminated to indicate power to the box.
4. Tractor RPM should be at 3/4 full RPM for proper operation.
5. Start moving the middle switch upward (Variable speed) to start the augers turning. After the augers are cleared of material shift into Lo range. Hold the range switch in the Lo direction until the shifting indicator is fully engaged into Lo range. Shift only when the forage box is running. Adjust the variable speed switch to obtain a satisfactory unloading speed. There is a slotted notch in the front shield to indicate speed.

6. As the load is almost fully unloaded and the load starts to fall rearward in the box shift the Hi/Lo switch to the Hi position for faster cleanout.



Figure 1. Controller Implement Connection



Figure 2. Controller Power Cable

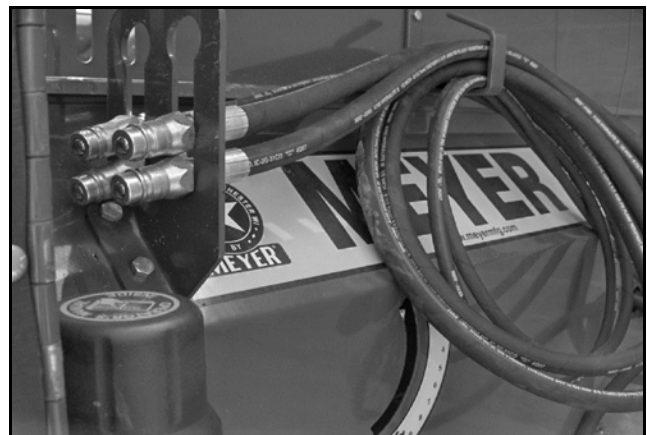


Figure 3. Hydraulic Hose Storage and Variable Speed Rate Indicator

Shut Down

1. After the forage box is completely unloaded move the Hi/Lo range to the neutral position. Note: The toggle switch is a momentary switch. Shifting from Hi to Lo or Neutral you have to hold the switch and watch the indicator until it shows in neutral. Shift only when box is running.
2. Move the variable speed to the slowest position. Turn off power to the control box and disengage hydraulic power to the forage box.
3. If the forage box is equipped with a hydraulic extension raise to the transport or up position.
4. For continual use it is not necessary to unhook hoses or electrical from the tractor.

Disconnecting From the Tractor

1. Unhook all hydraulic hoses from the tractor and store them on the hydraulic hose hanger brackets on the front of the forage box. See Figure 3.
2. Unhook the controller cable from the electrical socket on the forage box and store the electrical cable in the tractor cab. For out of season storage keep controller box with the forage box or in a dry location so it is available for the following season.

EMERGENCY TRIP CABLE OPERATION AND RESET

! WARNING: DO NOT RESET THE EMERGENCY STOP MECHANISM UNTIL ALL PEOPLE, TOOLS AND OTHER OBJECTS ARE WELL CLEAR OF THE FORAGE BOX. FAILURE TO HEED MAY RESULT IN SERIOUS PERSONAL INJURY OR DEATH.

Reset Emergency Stop Mechanism

1. Shut down the machine.
2. Lift the belt flap on the front shield and push the selector valve knob back down. See Figure 4.



Figure 4. Emergency Trip Cable - Hydraulic Selector Valve

Test Emergency Stop Mechanism

1. Check frequently to be assured that the emergency stop mechanism is in proper operating condition. Slowly engage the hydraulic drive and operate the forage box at low speed to ensure it is operating properly. Push the emergency stop bar across the upper edge of the front unloading unit, to ensure that the forage box can be shut down in an emergency.
2. Reset the emergency stop and recheck using the emergency stop trip cables at various locations to ensure that the forage box can be shut down in an emergency.
3. Periodically repeat emergency stop inspections during the operating season and at all times keep excessive slack out of the emergency stop trip cables.

MAINTENANCE

Range Control Clutch Adjustment

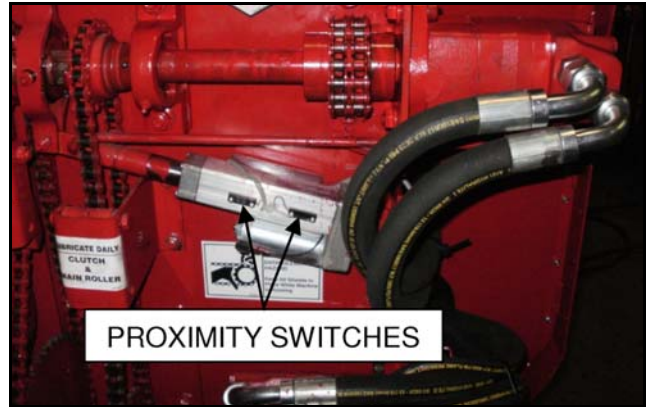
(Prior to Serial #'s 13T3242, 13T7201, 13T2234, 13T5316, 13T6243)

NOTE: Actuators on models after the serial numbers listed are preset and only have minor adjustment in the mounting tab.

The two proximity switches mounted to the body of the electric actuator limit the stroke extension and retraction of the actuator.

Loosen the two mounting screws on each switch and move the switches as follows:

With the range control switch on the controller set to center OFF position, the sliding splined jaw clutch should be at midspan between the “LO” and “HI” sprocket clutch jaws on the splined gear cluster shaft. Neither “LO” nor “HI” should be engaged. When the switch is moved to “LO”, the engaging jaw clutch should mate with the “LO” range sprocket clutch and have about 1/16” of clearance. Likewise for the “HI” range when the switch is moved to “HI.” Tighten the switch mounting screws to maintain the adjustments.



LUBRICATION



WARNING: DISCONNECT PTO DRIVE SHAFT (OR HYDRAULIC POWER SOURCE) BEFORE CLEANING, ADJUSTING, LUBRICATING OR SERVICING THIS MACHINE. FAILURE TO HEED MAY RESULT IN SERIOUS PERSONAL INJURY OR DEATH.

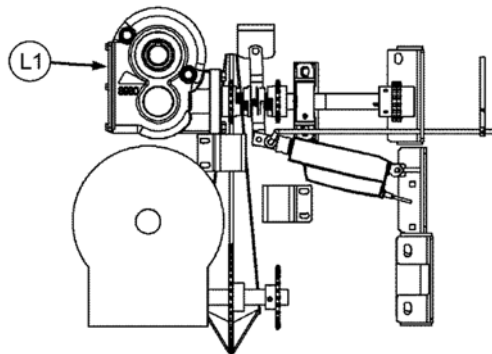
BEGINNING OF CROP MAINTENANCE

(Approximately 100 - 150 loads)



Maintain oil in the auger drive upper gearbox at the check plug level. Change oil in the gearbox after the first season of use and yearly thereafter. 19- 0158-HYD Gearbox use ONLY Synthetic ISO 460 Gear Oil AGMA 7 (Non EP) or equivalent. 19-0206 Gearbox use ONLY 80W90 weight.

Equivalent Viscosity of ISO-VG Grades at 104°F and SAE Gear Lube Grades



ISO-VG Grade	SAE Gear Lube Grade
46	75W
100	80W-90
220	90
460	85W-140
1500	250

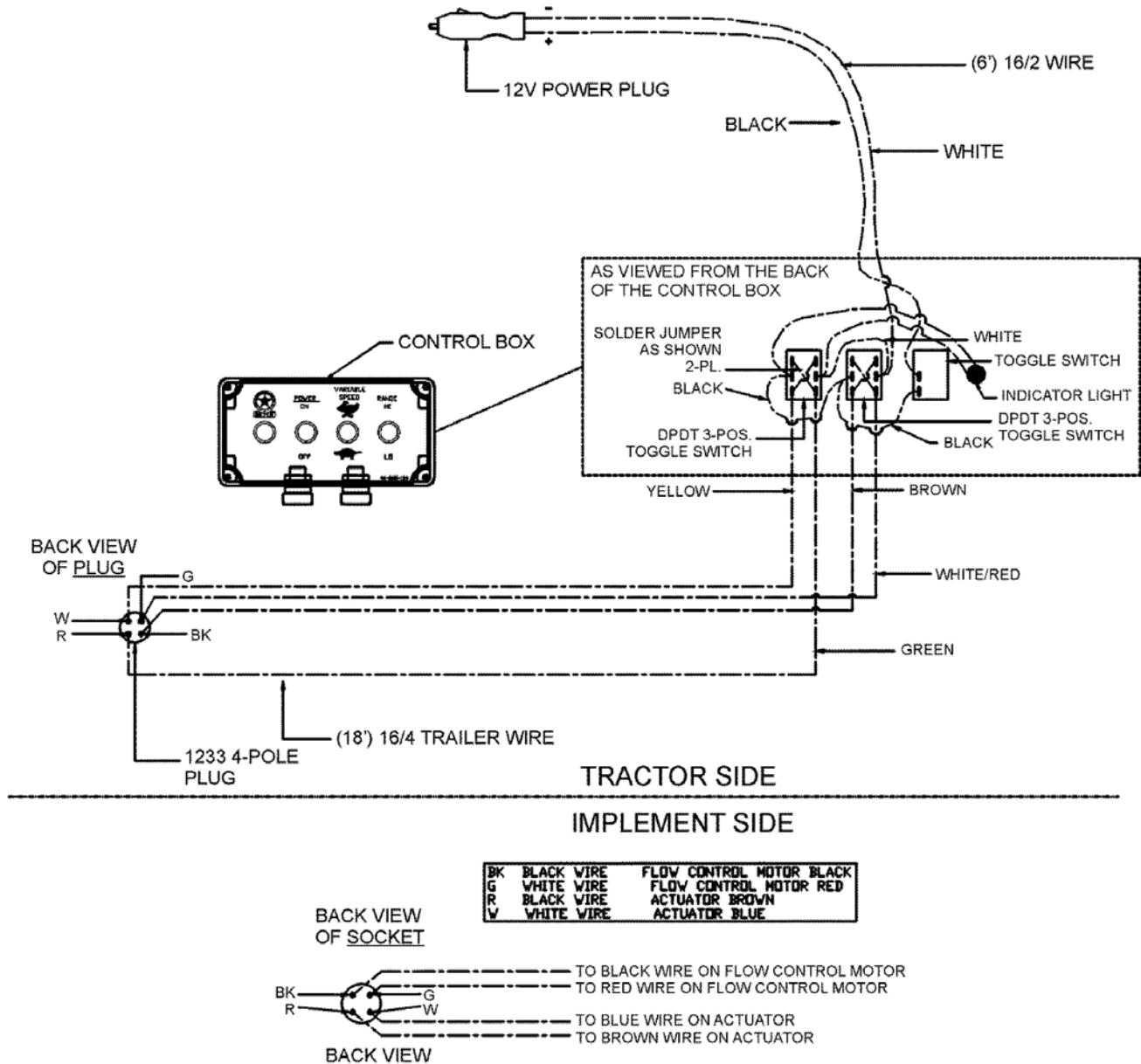
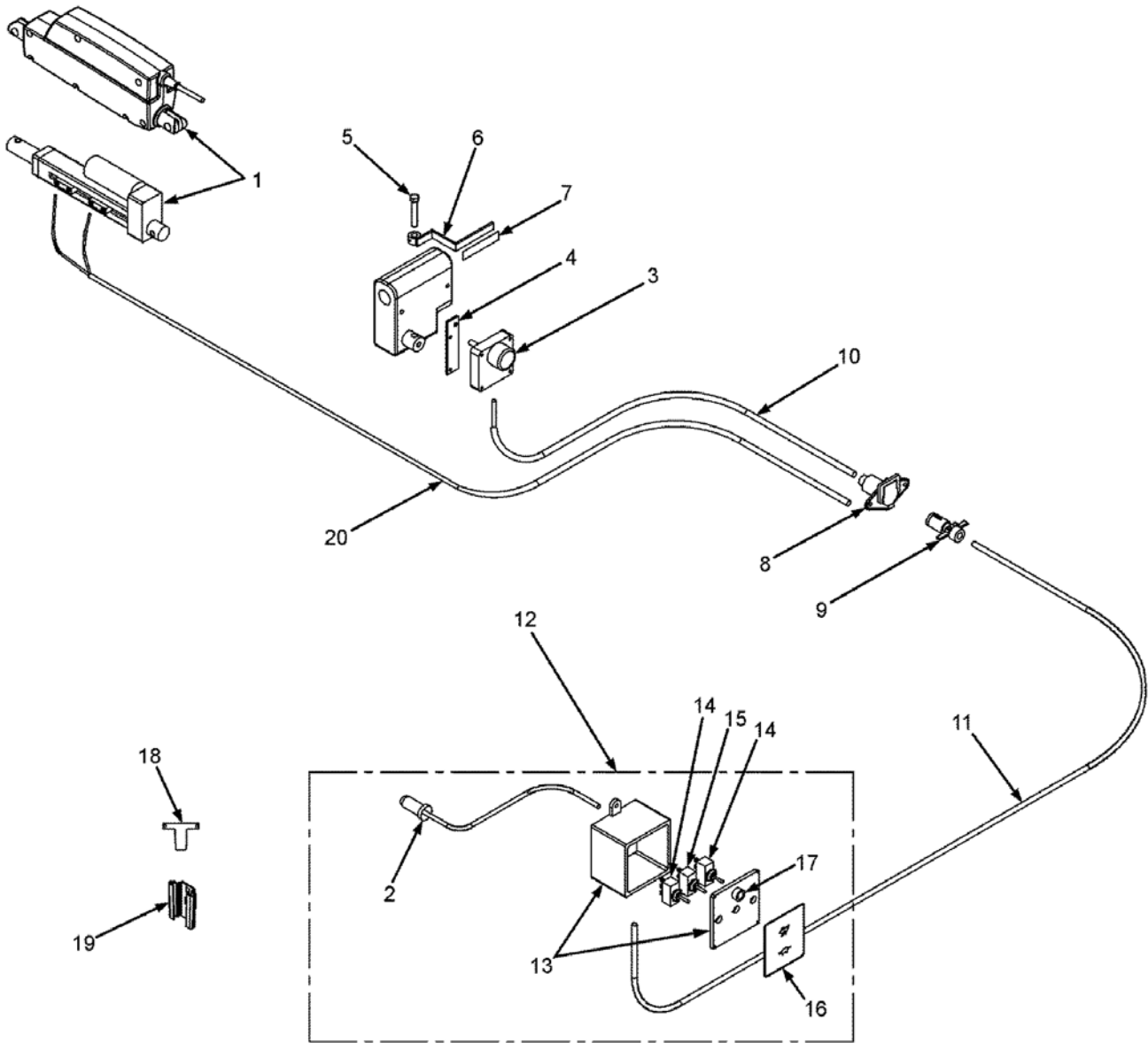


Figure 6. Electrical Schematic

This Page Intentionally Blank

ELECTRICAL COMPONENTS



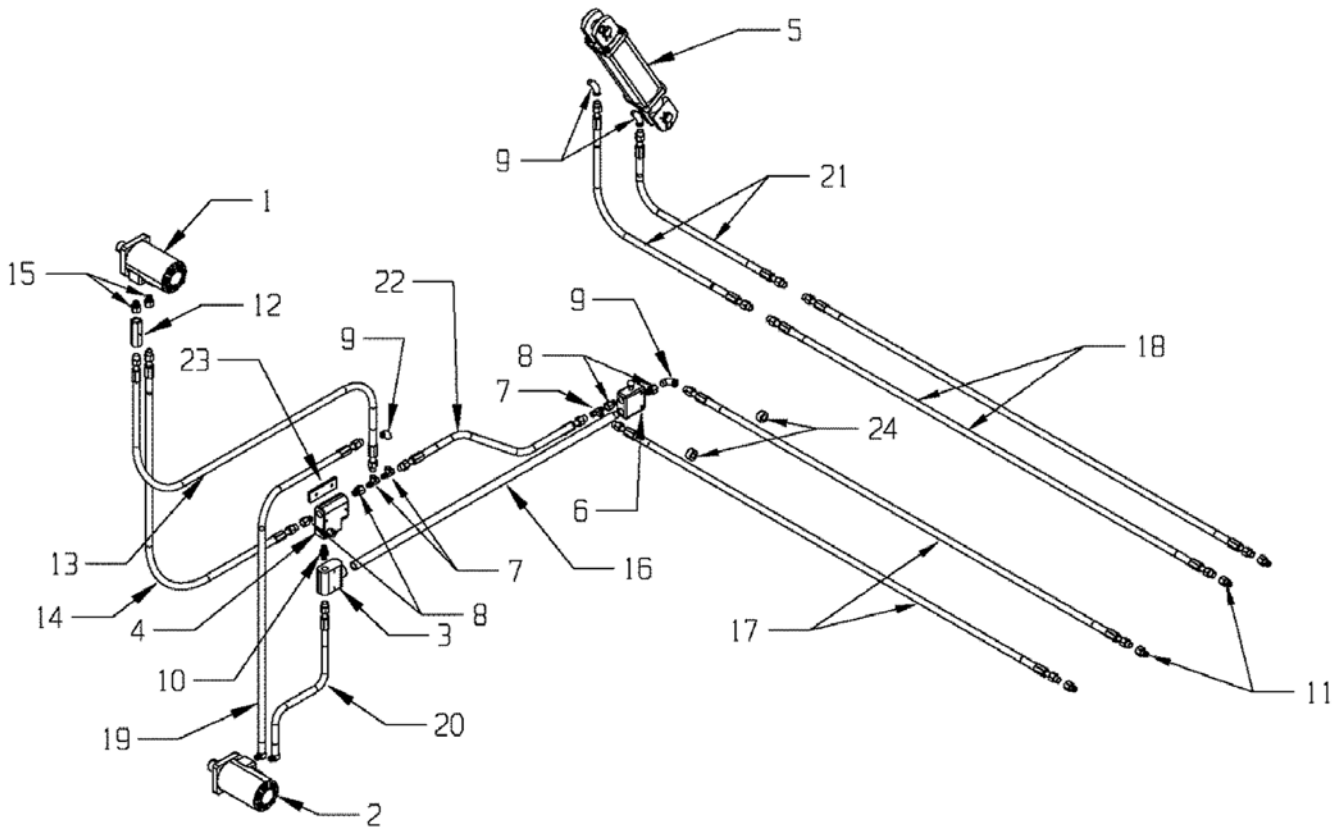
ELECPARTS-HYDELEC.CDR

ELECTRICAL COMPONENTS

KEY	PART NO.	QTY.	DESCRIPTION
1	56-0059-UP	1	4" LINEAR ACTUATOR 12V (PRIOR TO SERIAL #13T3242, 13T7201, 13T2234, 13T5316, 13T6243)
	56-0108	1	2.24" LINEAR ACTUATOR 12V (SERIAL #13T3242, 13T7201, 13T2234, 13T5316, 13T6243 AND LATER)
2	656-0001	1	12V MALE AUX POWER PLUG CARQUEST #82759
3	55-0197	1	12V DC PARALLEL SHAFT GEARMOTOR
4	25-0252	1	TSS MFC GEAR MOTOR BRK
5	851-3816-2.5Z	1	3/8-16 x 2-1/2" M.B. ZINC
6	25-0314	1	TSS HYD SPEED INDICATOR ARM ASSY
7	46-0002-2	1	AMBER REFLECTOR DECAL
8	56-0004	1	4-WAY PLUG FEMALE
9	56-0005-1	1	4-POLE PLUG MALE
10	56-0017	3'	16/2 WIRE
11	56-0037	18'	16/4 WIRE
12	56-0088	1	TSS ELEC CONTROL BOX DUAL MOTOR SYSTEM
13	955-0109-1	1	JUNCTION BOX, 4X4X2 PVC PRIOR TO 11T2255, 11T3236, 11T5287, 11T6262, 11T7203
	56-0088-2	1	JUNCTION BOX, 6X3X2 11T2255, 11T3236, 11T5287, 11T6262, 11T7203 AND LATER
14	56-0060-4	2	SWITCH, DPDT 3 POSITION TOGGLE
15	08-0089	1	TOGGLE SWITCH
16	46-0001-106	1	TSS CAB CONTROL POWER/VAR SPD, HI/LOW RANGE DECAL PRIOR TO 11T2255, 11T3236, 11T5287, 11T6262, 11T7203
	46-0001-120	1	TSS CAB CONTROL POWER/VAR SPD, HI/LOW RANGE DECAL 11T2255, 11T3236, 11T5287, 11T6262, 11T7203 AND LATER
17	56-0060-5	1	2935-1-11-38340 GREEN INDICATOR LIGHT 12V SPEMCO
18	56-0085	1	AHD CONTROL BOX MOUNTING BRACKET PRIOR TO 11T2255, 11T3236, 11T5287, 11T6262, 11T7203
	56-0088-1	1	AHD CONTROL BOX MOUNTING BRACKET 11T2255, 11T3236, 11T5287, 11T6262, 11T7203 AND LATER
19	33-1002	1	S.M.V. MOUNTING BRACKET
20	56-0017	4'	16/2 WIRE (PRIOR TO SERIAL #13T3242, 13T7201, 13T2234, 13T5316, 13T6243)
	56-0109	1	ACTUATOR WIRE ASSEMBLY (SERIAL #13T3242, 13T7201, 13T2234, 13T5316, 13T6243 AND LATER)

HYDRAULIC COMPONENTS

Prior to Serial Numbers 11T2231, 11T3221, 11T5254, 11T6228 & 11T7201; Excluding 11T3216



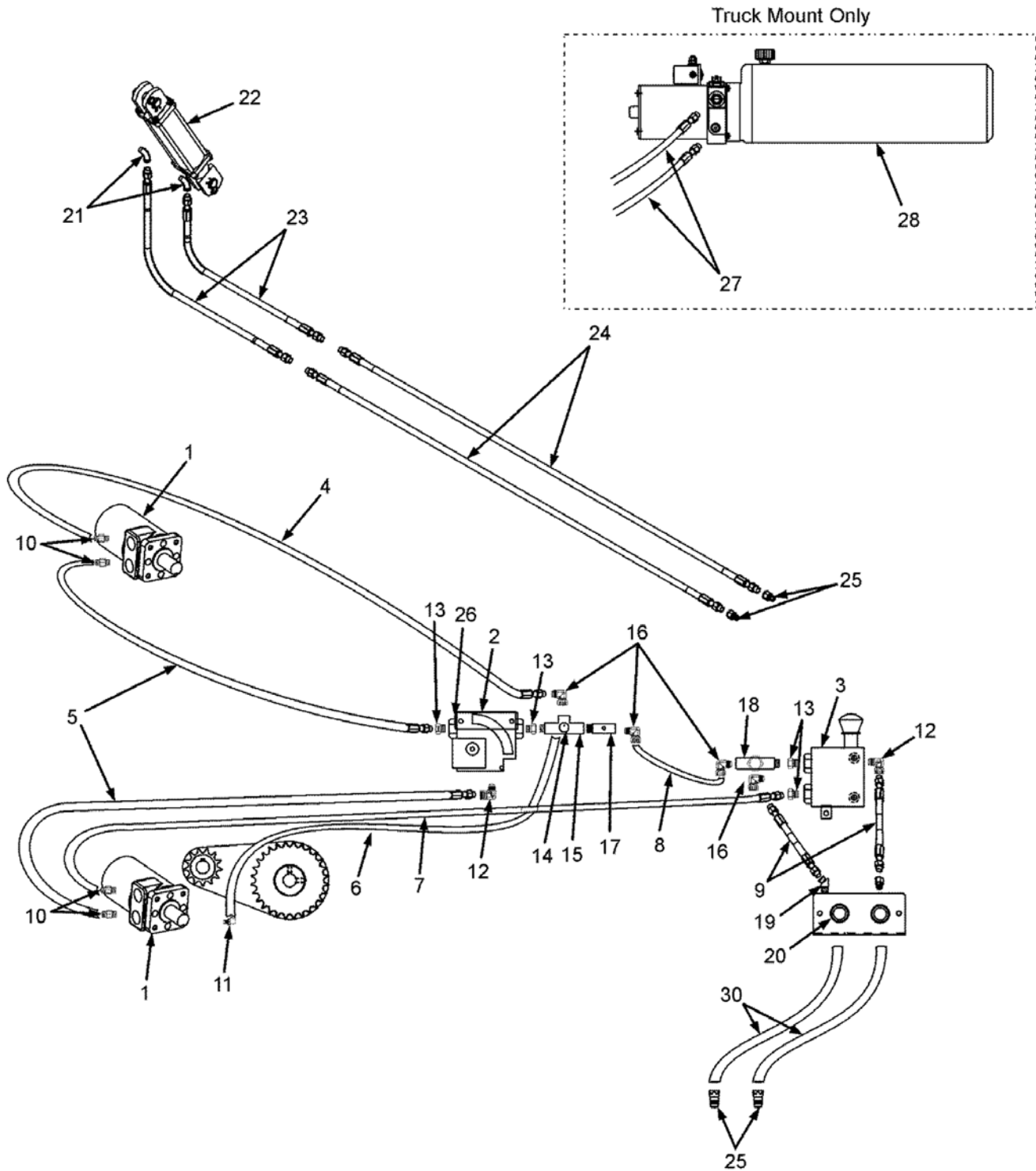
HYDRAULIC COMPONENTS

Prior to Serial Numbers 11T2231, 11T3221, 11T5254, 11T6228 & 11T7201; Excluding 11T3216

KEY	PART NO.	QTY.	DESCRIPTION
1	55-0099		T-SERIES HYD MOTOR
2	55-0211	1	H-SERIES MANIFOLD MOUNT MOTOR 4.5 CU. IN.
3	55-0198	1	PRIORITY DIVIDER
4	55-0076-DT	1	3/4" FLOW CONTROL
5	55-0093	1	CYLINDER, 2B x 18.25S HYDRAULIC
6	55-0018-DETENT	1	DETENT SELECTOR VALVE
7	55-0205	3	#5602-8-8 8MP-8FP-8FP 1/2 x 1/2 x 1/2" HYD TEE
8	55-0044	4	3/4 x 1/2" REDUCER
9	55-0004	4	1/2" 90 DEG STREET ELBOW BM #66231
10	55-0204	1	5404-12-12 3/4" HYD NIPPLE
11	55-0013	4	PIONEER COUPLER MALE TIP (PULL TYPE ONLY)
12	55-0007	1	1/2" NPT CHECK VALVE
13	55-0207	1	8G2-8 MP-8 MP x 90-31 1/2-2W HOSE 1/2 MP x 1/2-90
14	55-0209	1	8G2-8 MP-8 MP-22 1/2-2W HOSE 1/2 MP x 1/2 MP
15	55-0085	2	1/2 x 7/8" ORB ST. FITTING
16	55-0135	1	9126 FRONT HYD PIPE 3/4" SCH40 PIPE x 22"
17	55-0034	2	1/2" x 132" HOSE ASSEMBLY (PULL TYPE ONLY)
18	55-0051	2	1/4" x 130" HOSE ASSEMBLY (PULL TYPE ONLY)
19	55-0208	1	8G2-8 MP-8 MP-31 1/2-2W HOSE 1/2 MP x 1/2 MP
20	55-0206	1	6C2-6 MP-8 MPX-90-19 3/8-2W HOSE 3/8 MP x 1/2-90
21	955-0002	2	HOSE, 3/8 x 27 HYDRAULIC
22	55-0210	1	8G2-8 MP-8 MPX-16-1/2 1/2-2W HOSE 1/2 MP x 1/2 MPS
23	25-0250	1	FLOW CONTROL SPACER
24	33-0050	2	1-3/4" RUBBER GROMMET

HYDRAULIC COMPONENTS

Serial Number 11T2231, 11T3221, 11T5254, 11T6228, 11T7201 & Later; Including 11T3216



HYDPARTS-HYDELEC-2.CDR

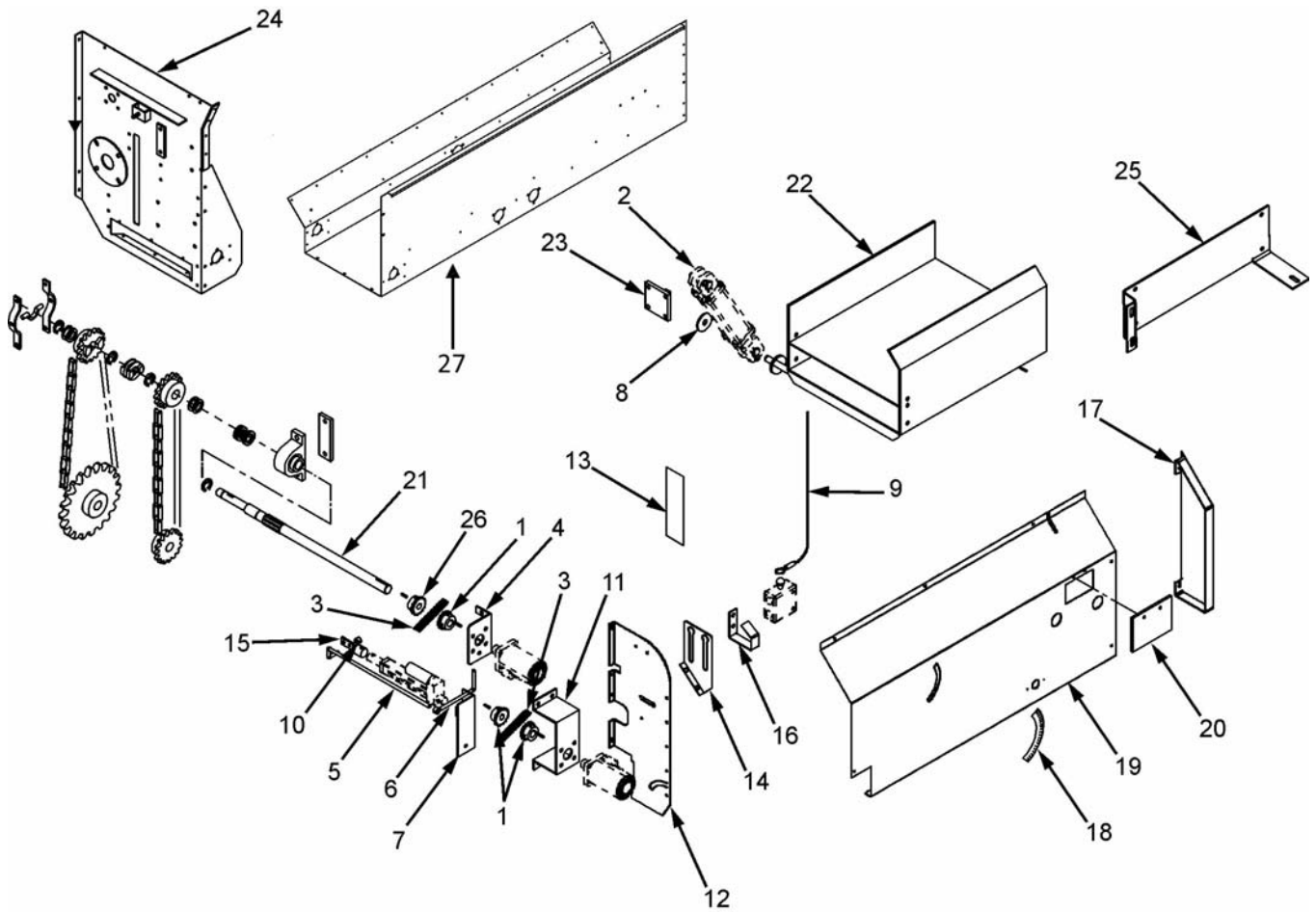
HYDRAULIC COMPONENTS

Serial Number 11T2231, 11T3221, 11T5254, 11T6228, 11T7201 & Later; Including 11T3216

KEY	PART NO.	QTY.	DESCRIPTION
1	55-0220	2	7.97 CU. IN. MOTOR
2	55-0076-SAE-DT	1	3/4" FLOW CONTROL DRILLED & TAPPED W/SAE PORTS
3	55-0018-D-SAE	1	DETENT SELECTOR VALVE W/ SAE PORTS
4	55-12G2-42-1	1	3/4" x 42" 90 HOSE ASSEMBLY
5	155-12G2-35-1	2	3/4" x 35" 90 HOSE ASSEMBLY
6	55-0193	1	1/4" x 52" HOSE ASSEMBLY
7	155-12G2-60-1	1	3/4" x 60" 90 HOSE ASSEMBLY
8	655-0012	1	3/4" x 12" HOSE ASSEMBLY
9	655-0011	2	3/4" x 12.5" HOSE ASSEMBLY
10	155-6400-12-10	4	12MJ-10ORB ADAPTER FITTING
11	155-6805-4-4	1	4ORB-4FNPT 90
12	155-6901-12-12	2	3/4" 90 DEGREE BULKHEAD ADAPTER FITTING
13	955-3830	4	3/4" STRAIGHT ADAPTER FITTING
14	55-0191	1	1/4" MALE x 1/4" FEMALE ADAPTER FITTING
15	55-0201-DT	1	3/4" ADAPTER TEE FITTING DRILLED 1/4" PORT
16	55-0129	4	3/4" 90 DEGREE FITTING
17	55-0007-B	1	3/4" CHECK VALVE
18	55-0201	1	3/4" ADAPTER TEE FITTING
19	155-57-12-12	1	3/4" 45 DEGREE SWIVEL ADAPTER
20	55-0156	2	3/4" TO 1/2" REDUCER (TRAILER MOUNTS ONLY)
21	55-0004	2	1/2" 90 DEG STREET ELBOW BM #66231
22	55-0093	1	CYLINDER, 2B x 18.25S HYDRAULIC
23	955-0002	2	HOSE, 3/8 x 27 HYDRAULIC
24	55-0051	2	1/4" x 130" HOSE ASSEMBLY (PULL TYPE ONLY)
25	55-0013	2/4	PIONEER COUPLER MALE TIP (PULL TYPE ONLY)
26	25-0250	1	FLOW CONTROL SPACER
27	955-3839	2	3/8" x 40" HYDRAULIC HOSE (TRUCK MOUNT ONLY)
28	955-0205	1	POWER UNIT, 12V DOUBLE ACTING W/REMOTE (TRUCK MOUNT ONLY)
29	25-0288	1	POWER UNIT MOUNTING BRKT (TRUCK MOUNT ONLY)
30	55-0034	2	1/2" x 132" HOSE ASSEMBLY (PULL TYPE ONLY)

MECHANICAL COMPONENTS

Prior to Serial Numbers 11T2231, 11T3221, 11T5254, 11T6228 & 11T7201; Excluding 11T3216



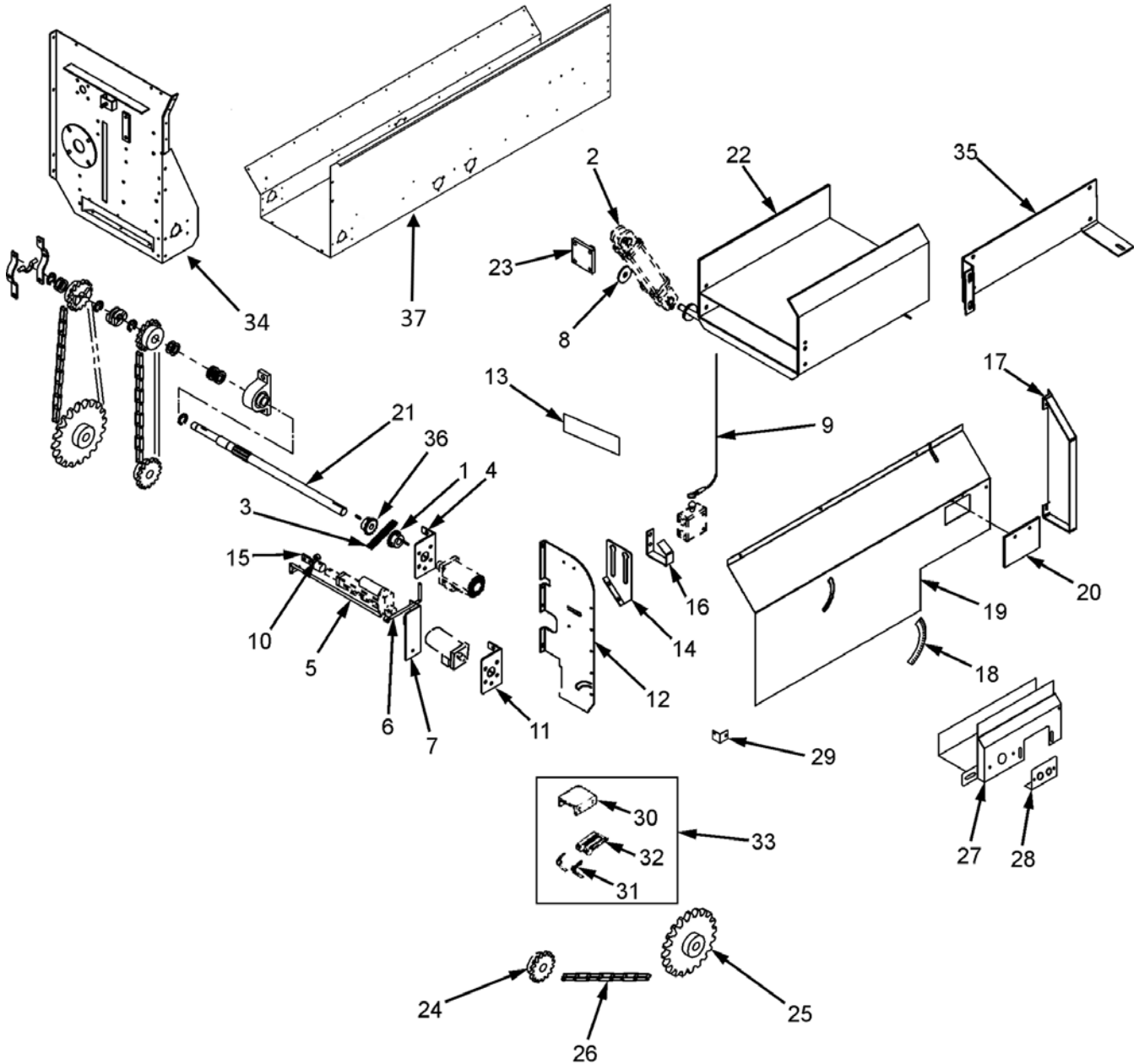
MECHANICAL COMPONENTS

Prior to Serial Numbers 11T2231, 11T3221, 11T5254, 11T6228 & 11T7201; Excluding 11T3216

KEY	PART NO.	QTY.	DESCRIPTION
1	37-0013-1	3	1" BORE 1/4" KEYWAY CHAIN COUPLER
2	55-0093	2	2 x 8" HYDRAULIC CYLINDER
3	37-0013-2	2	UNIT COUPLER CHAIN #50 16 DOUBLE W/CONNECTOR
4	25-0311-1	1	AUGER MOTOR MOUNT BRACKET
5	25-0315	1	TSS HYD HI/LO LINKAGE ROD 3/8 x 20"
6	25-0316	1	TSS HYD HI/LO IND ROD
7	25-0312	1	12V CYLINDER BRK ASSY
8	805-0010	1	1" FLAT WASHER
9	36-0002	1	EMERG STOP FRONT CABLE W/CLAMPS
10	14-0036	1	LOCKCOLLAR 3/8" ID x 3/4" OD
11	25-0310-1	1	CROSS APRON MOTOR MOUNT BRACKET
12	25-0198-HYD	1	TSS HYD CLUSTER SHIELD MT
	25-6014-HYD	1	66/6200 AHD CLUSTER SHIELD MOUNT ASSEMBLY
13	46-0001-103	1	TSS HI/LO DECAL (NOT SHOWN)
14	25-0249-1	1	HYD HOSE HANGER BRKT
15	25-0317	1	TSS HYD HI/LO SHIFT SLV WELDED ASSY
16	25-0209	1	2-WAY HYD HOSE HANGER
17	25-0318	1	TSS HYD FRONT SHIELD END CAP
18	46-0001-102	1	TSS HYD MOTORIZED FLOW CONTROL SPEED DECAL
19	25-0319	1	TSS-HYD FRONT SHIELD
20	49-0107	1	FRONT SHIELD SAFETY TRIP COVER, BELT
21	19-0015-1-HYD	1	TSS HYD A21 INPUT SHAFT 1.375 x 21-7/16"
22	45-0002-FB	1	12" FOLD DOWN EXTENSION HYD LIFT
	45-0002-FB-RH	1	12" FOLD DOWN EXTENSION HYD LIFT-R.H.
	45-0003-FB	1	24" FOLD DOWN EXTENSION HYD LIFT
	45-0003-FB-RH	1	24" FOLD DOWN EXTENSION HYD LIFT-R.H.
	45-0004-FB	1	36" FOLD DOWN EXTENSION HYD LIFT
	45-0004-FB-RH	1	36" FOLD DOWN EXTENSION HYD LIFT-R.H.
	45-0006-FB	1	48" FOLD DOWN EXTENSION HYD LIFT
	45-0006-FB-RH	1	48" FOLD DOWN EXTENSION HYD LIFT-R.H.
23	25-0235	1	FEEDER BOX CYLINDER MOUNT PLATE
24	39-0021-AHD	1	TSS AHD RH SIDE END FRAME ASSEMBLY (32/42/35/45/4600 MODELS)
	39-0023-AHD	1	TSS AHD RH SIDE END FRAME ASSEMBLY (66/6200 MODELS)
25	25-0288	1	POWER UNIT MOUNTING BRACKET (TRUCK MOUNT ONLY)
26	37-0017-1	1	1-1/4" BORE 1/4" KEYWAY CHAIN COUPLER
27	27-0031-AHD	1	TSS AHD APRON PAN BENT

MECHANICAL COMPONENTS

Serial Numbers 11T2231-13T2233; 11T5254-13T5315; 11T6228-13T6242; 11T7201- 12T7213; 11T3221-13T3241 Including 11T3216



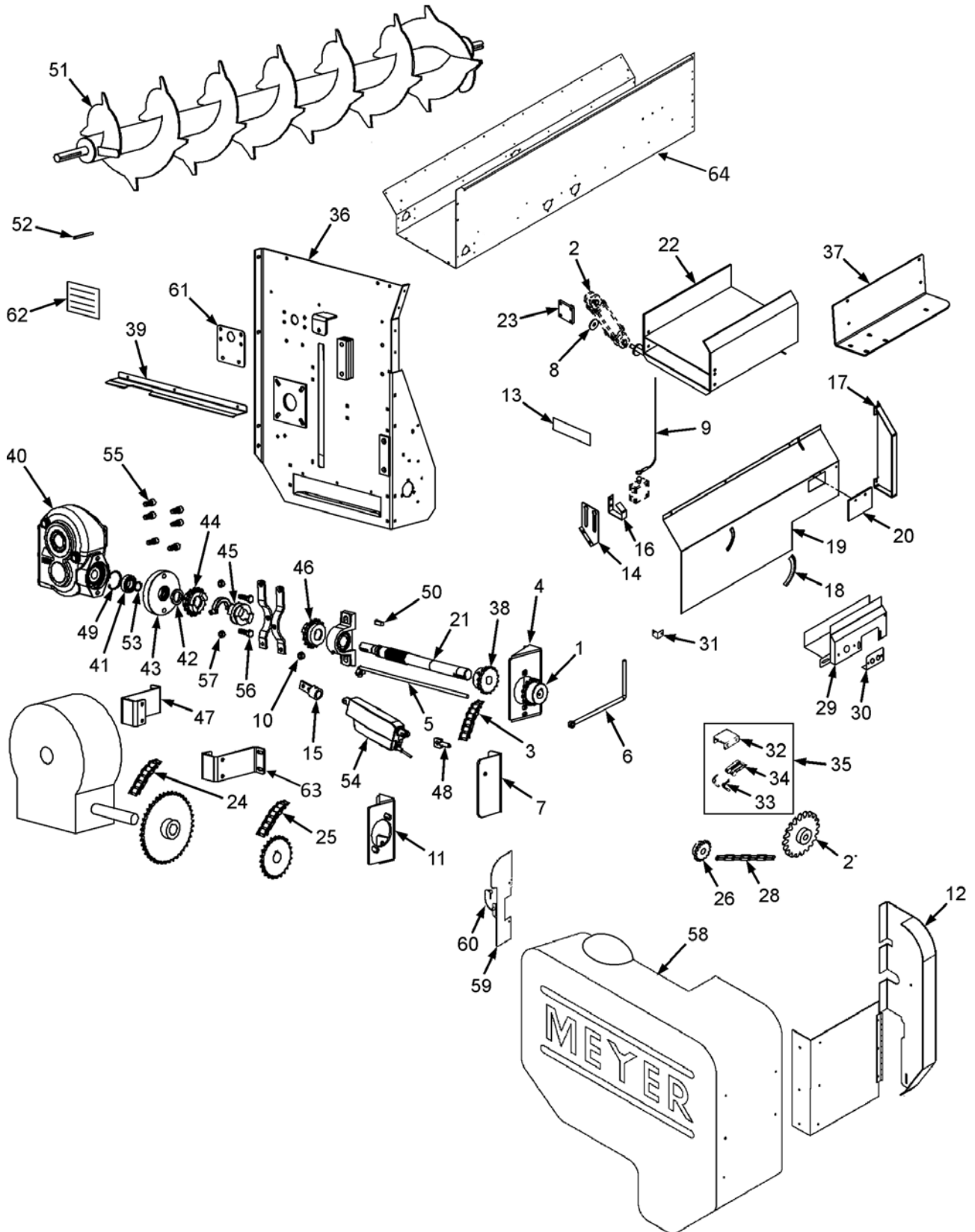
MECHANICAL COMPONENTS

Serial Numbers 11T2231-13T2233; 11T5254-13T5315; 11T6228-13T6242; 11T7201- 12T7213; 11T3221-13T3241 Including 11T3216

KEY	PART NO.	QTY.	DESCRIPTION
1	37-0013-1	1	1" BORE 1/4" KEYWAY CHAIN COUPLER
2	55-0093	1	2 x 8" HYDRAULIC CYLINDER
3	37-0013-2	1	UNIT COUPLER CHAIN #50 16 DOUBLE W/CONNECTOR
4	25-0398	1	AUGER MOTOR MOUNT BRACKET
5	25-0315	1	TSS HYD HI/LO LINKAGE ROD 3/8 x 20"
6	25-0316	1	TSS HYD HI/LO INDICATOR ROD
7	25-0312	1	12V CYLINDER BRKT ASSEMBLY
8	805-0010	1	1" FLAT WASHER
9	36-0002	1	EMERGENCY STOP FRONT CABLE W/CLAMPS
10	14-0036	1	LOCKCOLLAR 3/8" ID x 3/4" OD
11	25-0399	1	CROSS APRON MOTOR MOUNT BRACKET
12	25-0419	1	66/6200 TSS AHD CLUSTER SHIELD MOUNT PLATE ASSEMBLY
	25-0419-1-AS	1	45/46/42 TSS AHD CLUSTER SHIELD MOUNT PLATE ASSEMBLY
13	46-0001-103	1	TSS HI/LO DECAL (NOT SHOWN)
14	25-0249-1	1	HYD HOSE HANGER BRACKET (TRALER MOUNTS)
15	25-0317	1	TSS HYD HI/LO SHIFT SLEEVE WELDED ASSY
16	25-0209	1	2-WAY HYD HOSE HANGER BRACKET (TRAILER MOUNTS)
17	25-0318	1	TSS HYD FRONT SHIELD END CAP
18	46-0001-102	1	TSS HYD MOTORIZED FLOW CONTROL SPEED DECAL
19	25-0418	1	TSS-AHD FRONT SHIELD ASSEMBLY
20	49-0107	1	FRONT SHIELD SAFETY TRIP COVER, BELT
21	19-0015-1-HYD	1	TSS HYD A21 INPUT SHAFT 1.375 x 21-7/16"
22	45-0002-FB	1	12" FOLD DOWN EXTENSION HYD LIFT
	45-0002-FB-RH	1	12" FOLD DOWN EXTENSION HYD LIFT-RH
	45-0003-FB	1	24" FOLD DOWN EXTENSION HYD LIFT
	45-0003-FB-RH	1	24" FOLD DOWN EXTENSION HYD LIFT-RH
	45-0004-FB	1	36" FOLD DOWN EXTENSION HYD LIFT
	45-0004-FB-RH	1	36" FOLD DOWN EXTENSION HYD LIFT-RH
	45-0006-FB	1	48" FOLD DOWN EXTENSION HYD LIFT
	45-0006-FB-RH	1	48" FOLD DOWN EXTENSION HYD LIFT-RH
23	25-0235	1	FEEDER BOX CYLINDER MOUNT PLATE
24	10-0001	1	SPROCKET 50B13 1" B
25	10-0007	1	SPROCKET 50B28 1" B
26	111-0050-49	1	#50-49 ROLLER CHAIN
27	25-0417-1	1	TSS AHD REMOTE HYD HOOKUP WELDMENT
28	25-0417-2	1	AHD REMOTE HYD COUPLER WELDMENT
29	24-0010-2	1	TSS FRONT ANGLE SHIELD CLIP
30	25-0011	1	TIGHTENER BRACKET W/NUT
31	29-0002	2	CHAIN TIGHTENER SPRING
32	41-0002	1	3" CHAIN TIGHTENER PADDLE
33	41-0030	1	AHD TIGHTENER ASSEMBLY
34	39-0021-AHD	1	TSS AHD RH SIDE END FRAME ASSEMBLY (32/42/35/45/4600 MODELS)
	39-0023-AHD	1	TSS AHD RH SIDE END FRAME ASSEMBLY (66/6200 MODELS)
35	25-0288	1	POWER UNIT MOUNTING BRACKET (TRUCK MOUNT ONLY)
36	37-0017-1	1	1-1/4" BORE 1/4" KEYWAY CHAIN COUPLER
37	27-0031-AHD	1	TSS AHD APRON PAN BENT

MECHANICAL COMPONENTS

Serial Numbers 13T2234, 13T5316, 13T6243, 13T7201, 13T3242 & Later



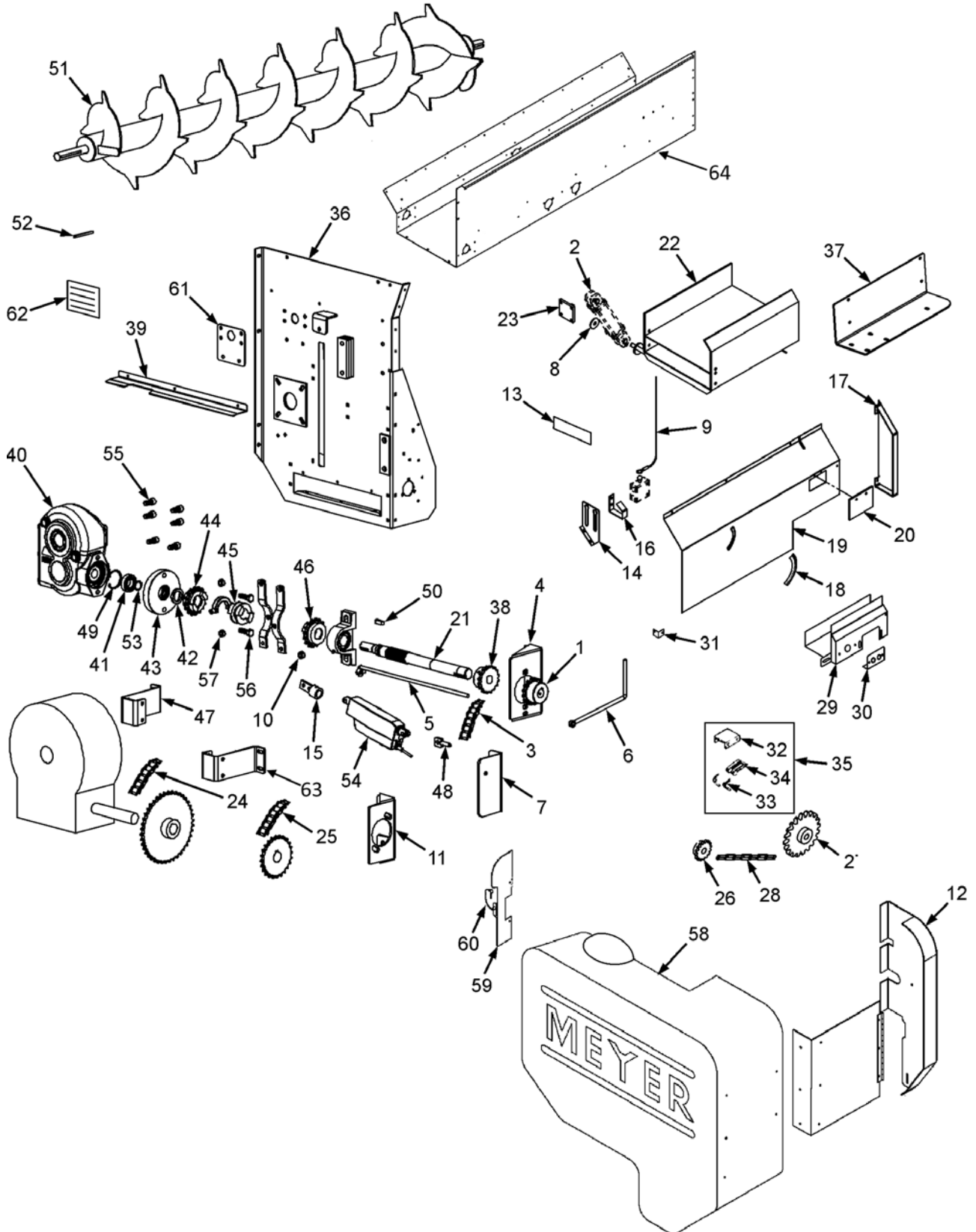
MECHANICAL COMPONENTS

Serial Numbers 13T2234, 13T5316, 13T6243, 13T7201, 13T3242 & Later

KEY	PART NO.	QTY.	DESCRIPTION
1	37-0013-1	1	1" BORE 1/4" KEYWAY CHAIN COUPLER
2	55-0093	1	2 x 8" HYDRAULIC CYLINDER
3	37-0013-2	1	UNIT COUPLER CHAIN #50 16 DOUBLE W/CONNECTOR
4	25-0427	1	RT160 MOTOR MOUNT BRACKET
5	25-0315	1	RT160 HI/LO INDICATOR ROD
6	25-0316-HCC	1	RT160 HI/LO INDICATOR ROD
7	25-0429-1	1	CYLINDER BRACKET ASSEMBLY
8	805-0010	1	1" FLAT WASHER
9	36-0002	1	EMERGENCY STOP FRONT CABLE W/CLAMPS
10	14-0036	1	LOCKCOLLAR 3/8" ID x 3/4" OD
11	25-0399	1	CROSS APRON MOTOR MOUNT BRACKET
12	25-0419	1	CLUSTER SHIELD MOUNT PLATE ASSEMBLY
13	46-0001-103	1	TSS HI/LO DECAL (NOT SHOWN)
14	25-0249-1	1	HYD HOSE HANGER BRACKET (TRAILER MOUNTS)
15	25-0397	1	ACTUATOR YOKE/SLEEVE WELDMENT SHIFTING END
16	25-0209	1	2-WAY HYD HOSE HANGER BRACKET (TRAILER MOUNTS)
17	25-0318	1	TSS HYD FRONT SHIELD END CAP
18	46-0001-102	1	TSS HYD MOTORIZED FLOW CONTROL SPEED DECAL
19	25-0418	1	TSS AHD FRONT SHIELD ASSEMBLY
20	49-0107	1	FRONT SHIELD SAFETY TRIP COVER, BELT
21	23-0166	1	TSS RT160 INPUT SHAFT SPLINED
22	45-0002-FB	1	12" FOLD DOWN EXTENSION HYD LIFT
	45-0002-FB-RH	1	12" FOLD DOWN EXTENSION HYD LIFT- RH
	45-0003-FB	1	24" FOLD DOWN EXTENSION HYD LIFT (OPTIONAL)
	45-0003-FB-RH	1	24" FOLD DOWN EXTENSION HYD LIFT- RH (OPTIONAL)
	45-0004-FB	1	36" FOLD DOWN EXTENSION HYD LIFT (OPTIONAL)
	45-0004-FB-RH	1	36" FOLD DOWN EXTENSION HYD LIFT- RH (OPTIONAL)
	45-0006-FB	1	48" FOLD DOWN EXTENSION HYD LIFT (OPTIONAL)
	45-0006-FB-RH	1	48" FOLD DOWN EXTENSION HYD LIFT- RH (OPTIONAL)
23	25-0235	1	FEEDER BOX CYLINDER MOUNT PLATE
24	111-0050-81	1	#50 81 LINK ROLLER CHAIN W/CONNECTOR
25	111-0050-69	1	#50 69 LINK ROLLER CHAIN W/CONNECTOR
26	10-0001	1	SPROCKET 50B13 1" BORE
27	10-0007	1	SPROCKET 50B28 1" BORE
28	111-0050-49	1	#50-49 ROLLER CHAIN
29	25-0417-1	1	TSS AHD REMOTE HYD HOOKUP WELDMENT
30	25-0417-2	1	AHD REMOTE HYD COUPLER WELDMENT
31	24-0010-2	1	TSS FRONT ANGLE SHIELD CLIP
32	25-0011	1	TIGHTENER BRACKET W/NUT
33	29-0002	2	CHAIN TIGHTENER SPRING
34	41-0002	1	3" CHAIN TIGHTENER PADDLE
35	41-0030	1	AHD TIGHTENER ASSEMBLY
36	39-0026	1	TSS AHD RH SIDE END FRAME ASSEMBLY (32/42/35/45/4600 MODELS)
	39-0027	1	TSS AHD RH SIDE END FRAME ASSEMBLY (66/6200 MODELS)

MECHANICAL COMPONENTS (CONTINUED)

Serial Numbers 13T2234, 13T5316, 13T6243, 13T7201, 13T3242



MECHANICAL COMPONENTS (CONTINUED)

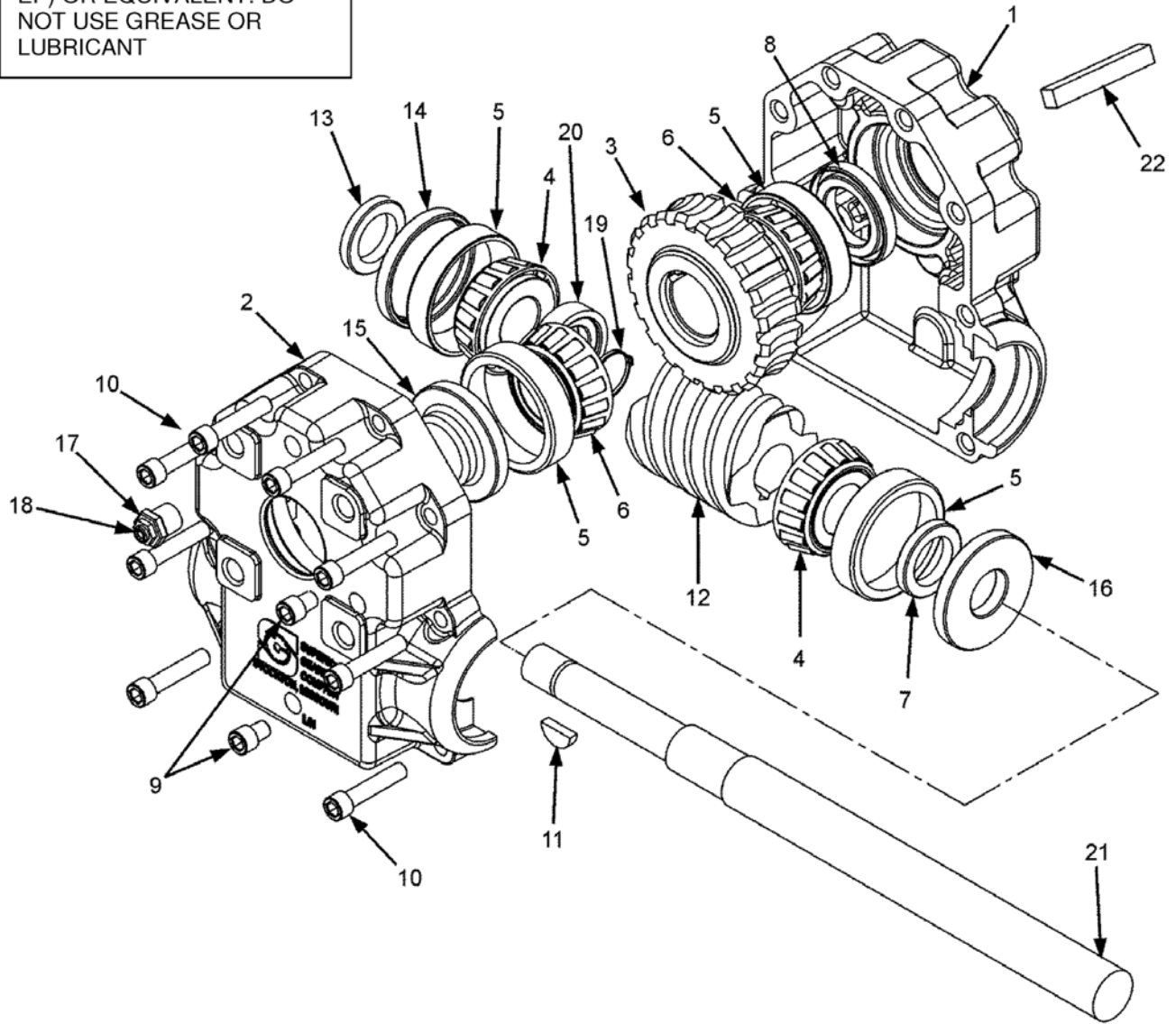
Serial Numbers 13T2234, 13T5316, 13T6243, 13T7201, 13T3242

KEY	PART NO.	QTY.	DESCRIPTION
37	25-0288	1	POWER UNIT MOUNTING BRACKET (TRUCK MOUNT ONLY)
38	37-0017-1	1	1-1/4" BORE 1/4" KEYWAY CHAIN COUPLER
39	25-0430	1	CLUSTER SHIELD TOP CAP - BOLT ON
40	19-0206	1	RT160 GEARBOX 8.4:1 W/GASKET
41	14-0308	1	1" BEARING
42	19-0206-1-2	1	SEAL
43	19-0206-1-1	1	RT160 INPUT HOUSING
44	10-0104	1	HIGH SPEED SPIRAL PIE JAW CLUTCH SPROCKET
45	15-0007	1	CENTER SPIRAL PIE JAW CLUTCH
46	10-0103	1	LOW SPEED SPIRAL PIE JAW CLUTCH SPROCKET
47	25-0423	1	CHAIN TIGHTENER BRACKET
48	25-0396	1	ACTUATOR MOUNT WELDMENT, FIXED END
49	33-0053	1	SNAP RING 2.21" INTERNAL
50	135-2525-1.25-1	1	1/4 x 1/4" x 1.25" SQUARE KEY 1045 W/ROUNDED ENDS
51	26-0037	1	RT160 BOTTOM AUGER ASSEMBLY 5/16" KEY
	26-0037-FB	1	RT160 FEEDER BOX BOTTOM AUGER ASSEMBLY 5/16" KEY
52	135-3131-4-1	1	5/16 x 5/16 x 4" SQUARE KEY 1045 W/SQUARE ENDS
53	19-0055-4-19	1	SNAP RING 1" SHAFT EXTERNAL
54	-----	----	SEE ELECTRICAL COMPONENTS
55	831-M12-1.75-25	6	SOCKET HEAD CAP SCREW M12-1.75 x 25
56	851-M12-1.75-40-Z	2	HEX HEAD BOLT M12-1.75 x 40 MM
57	822-0050-Z	2	1/2" SPLIT LOCK WASHER
58	24-0112-1-HCC	1	RT160 PLASTIC SHIELD ONLY
59	25-6015	1	DOOR CATCH ASSEMBLY
60	823-0003	1	LYNCH PIN
61	25-0428	1	RT160 SPACER PLATE
62	46-0001-124	1	IMPORTANT HCC UPPER & LOWER GEARBOX DECAL
63	25-0161-1	1	CHAIN TIGHTENER BRACKET (4500/4200 MODELS)
	25-0423	1	CHAIN TIGHTENER BRACKET (6200/6600/4600 MODELS)
64	27-0031-AHD	1	TSS AHD APRON PAN BENT

19-0158-HYD UPPER GEAR BOX ASSEMBLY

(PRIOR TO SERIAL NUMBER 13T3242, 13T7201, 13T2234, 13T5316, 13T6243)

USE ONLY SYNTHETIC ISO
460 GEAR OIL AGMA 7 (NON
EP) OR EQUIVALENT. DO
NOT USE GREASE OR
LUBRICANT



HydElec-UpperGearBoxAssembly.cdr

19-0158-HYD UPPER GEAR BOX ASSEMBLY

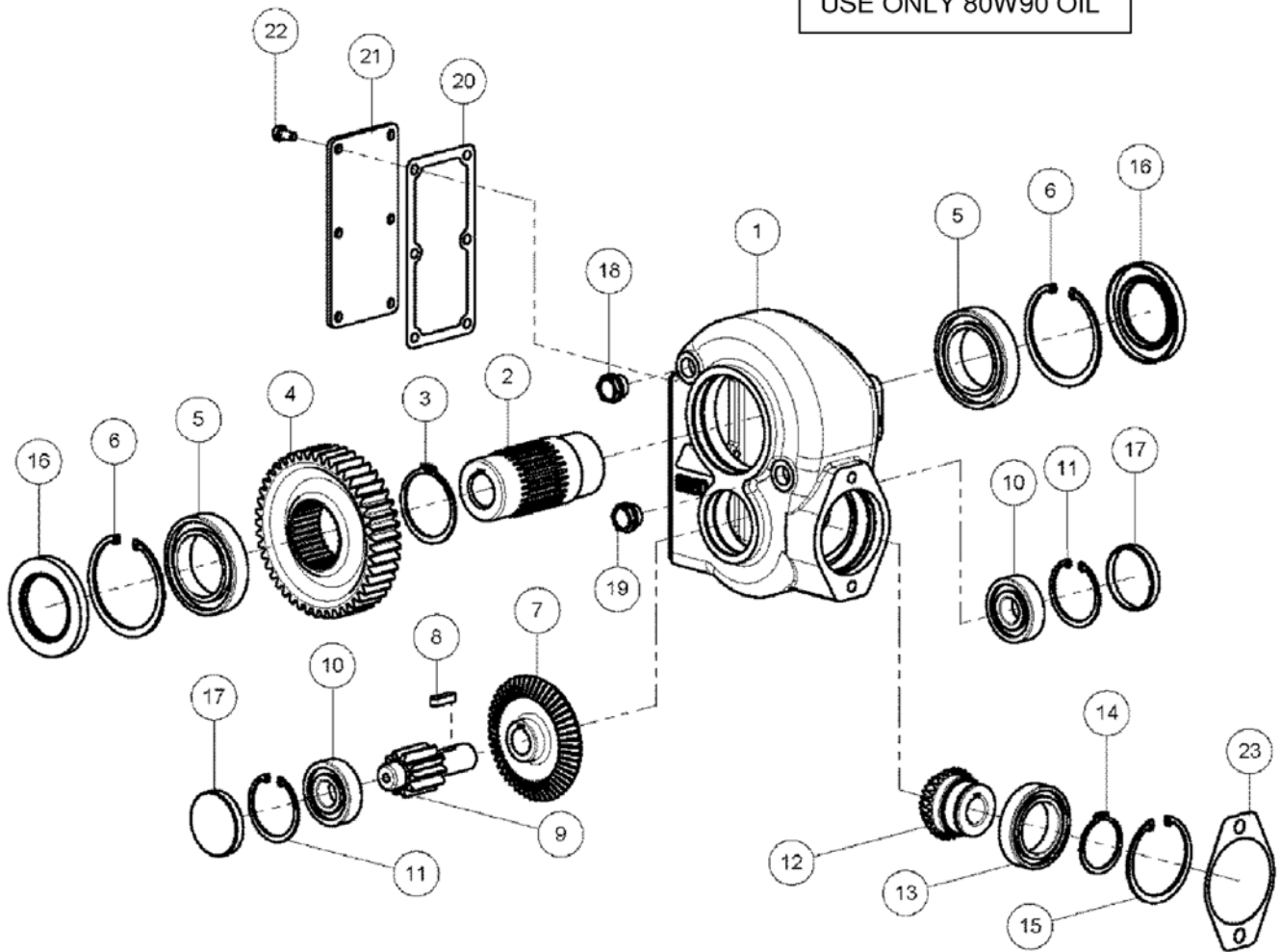
(PRIOR TO SERIAL NUMBER 13T3242, 13T7201, 13T2234, 13T5316, 13T6243)

KEY	PART NO.	QTY.	DESCRIPTION
	19-0158-HYD	1	UPPER GEARBOX W/AHD INPUT SHAFT, 10:1 5/16" KEY
	19-0158-4	1	UPPER GEARBOX W/O INPUT SHAFT, 10:1 5/16" KEY
1	19-0055-4-1	1	TAPPED GEARBOX CASTING
2	19-0055-4-2	1	THRU HOLE CASTING
3	19-0058-GS	1	10:1 GEAR SET, 4140 GEAR, BRONZE WORM, 5/16" KEY (PRIOR TO SN 12T2229)
	19-0058-4-2-4140	1	10:1 4140 GEAR, 5/16" KEY (SERIAL # 12T2229 & LATER)
4	19-0055-4-4	2	BEARING CONE
5	19-0055-4-5	4	BEARING CUP
6	19-0055-4-6	2	BEARING CONE
7	19-0024-12	1	SEAL 1" I.D. X 1-1/2" O.D.
8	19-0016-10	1	SEAL 1-1/4 I.D. x 2" O.D.
9	19-0055-4-9	2	PLUG, 1/4-18 NPT PLUG
10	19-0055-4-10	AR	BOLT, 5/16-18 x 1-1/2" SHCS
	19-0055-4-11	AR	BOLT, 5/16-18 x 1-3/4" SHCS
	19-0055-4-21	AR	BOLT, 5/16-18 x 1-1/4" SHCS
11	19-0003-6	1	WOODRUFF KEY
12	19-0058-GS	1	10:1 GEAR SET, 4140 GEAR, BRONZE WORM, 5/16" KEY (PRIOR TO SN 12T2229)
	19-0058-4-3-BR	1	BRONZE ROLLED WORM GEAR 10:1 (SERIAL # 12T2229 & LATER)
13	19-0024-28	1	END CAP 1-1/2"
14	19-0024-19	1	END CAP 2-5/16"
15	19-0055-4-15	1	END CAP 2"
16	19-0024-27	1	SEAL 1" I.D. x 2-5/16" O.D.
17	19-0055-4-17	1	BUSHING, 1/4" NPT x 1/8" NPT
18	19-0055-4-18	1	VENT PLUG 5-PSI
19	19-0055-4-19	1	EXTERNAL RETAINING RING 1.0 SHAFT
20	19-0055-4-20	1	1" I.D. SPACER
21	19-0015-1-HYD	1	TSS INPUT SHAFT
22	35-0030-H	1	KEY, 5/16" x 5/16" x 1-1/4" HARDENED (PRIOR TO 11T5241, 11T6217, 11T3222, 11T2221, 11T7201)
	135-31W-1.25-1	1	KEY, WOODRUFF 5/16 x 1-1/4" HARDENED (SERIAL #11T5241, 11T6217, 11T3222, 11T2221, 11T7201 & LATER)

19-0206
RT160
UPPER GEAR BOX ASSEMBLY

(SERIAL NUMBER 13T3242, 13T7201, 13T2234, 13T5316, 13T6243 & Later)

USE ONLY 80W90 OIL



19-0206
RT160
UPPER GEAR BOX ASSEMBLY
(SERIAL NUMBER 13T3242, 13T7201, 13T2234, 13T5316, 13T6243 & Later)

KEY	PART NO.	QTY.	DESCRIPTION
1	19-0206-1	1	Housing
2	19-0206-2	1	1-1/4" Hub
3	19-0206-3	1	Retaining Ring
4	19-0206-4	1	Gear
5	19-0206-5	2	Bearing
6	19-0206-6	2	Retaining Ring
7	19-0206-7	1	Gear
8	19-0206-8	1	Key
9	19-0206-9	1	Pinion
10	19-0206-10	2	Bearing
11	19-0206-11	2	Retaining Ring
12	19-0206-12	1	Pinion
13	619-0001-18	1	Bearing
14	619-0001-19	1	Retaining Ring
15	619-0001-16	1	Retaining Ring
16	19-0206-13	2	Oil Seal
17	19-0206-14	2	Plug
18	19-0203-16	1	Oil Breather Plug
19	19-0203-14	1	Oil Level Indicator
20	19-0206-15	1	Gasket
21	19-0206-16	1	Cover
22	619-0001-27	1	M8 x 16 Hex Head Bolt
23	19-0203-17	1	Gasket



Meyer Manufacturing Corporation

574 West Center Avenue
Dorchester, WI 54425
Phone: 1-800-325-9103
Fax: 715-654-5513
Email: sales@meyermfg.com
Website: www.meyermfg.com

MAINTENANCE RECORD

MODEL NO. _____

SERIAL NO. _____

DATE	SERVICE PERFORMED

DATE	SERVICE PERFORMED



Manufactured by:
Meyer Mfg. Corp.
574 West Center Avenue
Dorchester, WI 54425
Phone: 1-800-325-9103
Fax: 715-654-5513

Email: sales@meyermfg.com
Website: www.meyermfg.com

Farm Equipment Buyers Trust the Name Meyer!





Meyer Manufacturing Corporation

574 West Center Avenue

Dorchester, WI 54425

Phone: 1-800-325-9103

Fax: 715-654-5513

Email: sales@meyermfg.com

Website: www.meyermfg.com