

MEYER

SUPPLEMENTAL PARTS LISTING

FOR

TWIN EXPELLER SUPER SPREADER

SERIES: S, SB and SH

**MODELS: 2636
 3245
 3954**

Manufactured by

Meyer Mfg. Corp.

Phone 715-654-5132

Fax 715-654-5513

Dorchester, Wisconsin 54425



INTRODUCTION

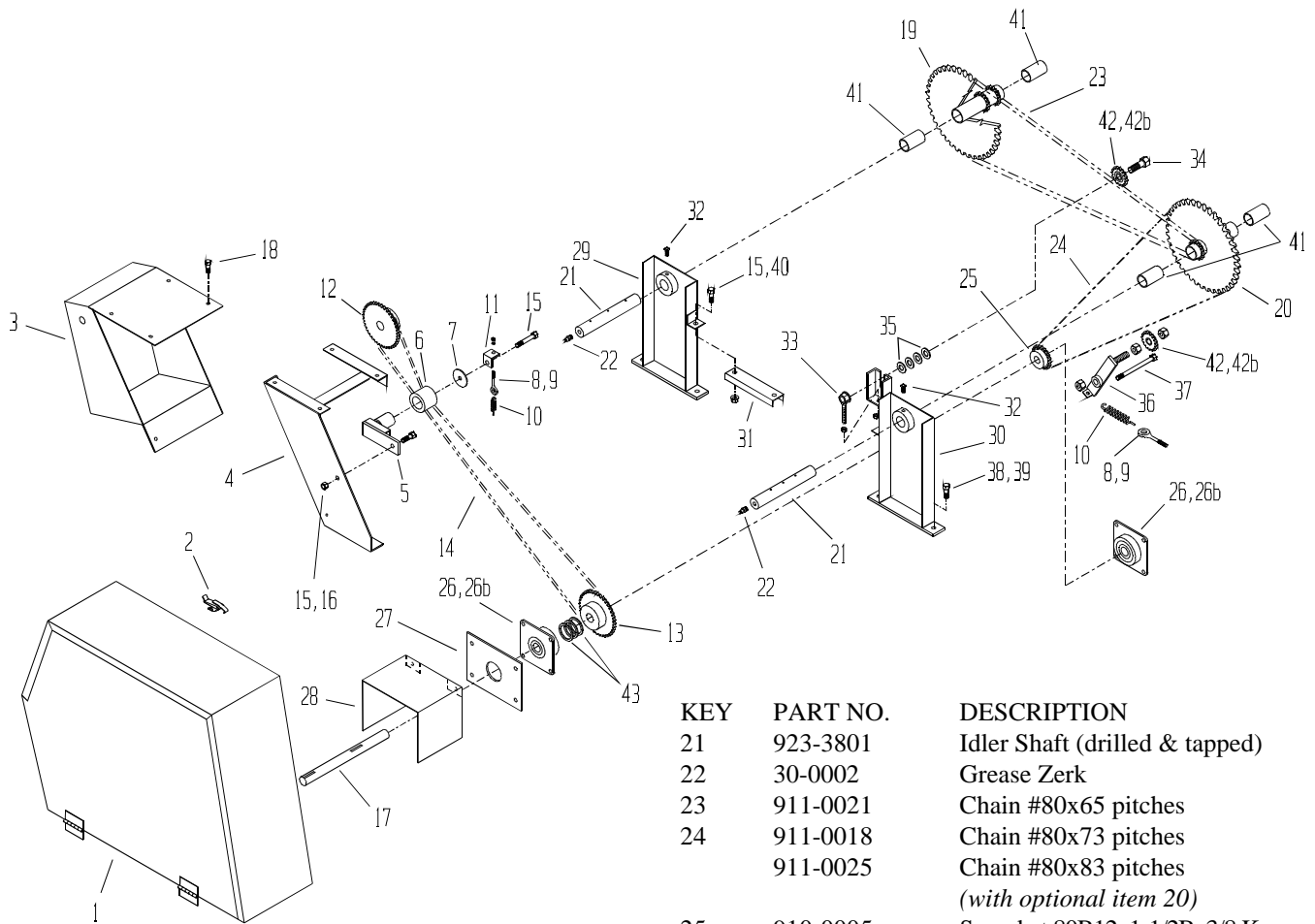
This supplemental parts listing is supplied to document all repair parts used for series S, SB and SH Meyer Super Spreaders.

The first series was S and is easiest identified by sleeve bearings on both of the large top sprockets at the front of the drive. It also has #100 auger drive chain.

The SB series is identified by the introduction of an optional third auger and four bolt flange bearings on the left hand, large top sprocket. It also has #100 auger drive chain.

The SH series is identified by having a large bearing mounting plate at the front of the drive, replacing the upright bearing channels used on previous models. It also has #120 drive chain.

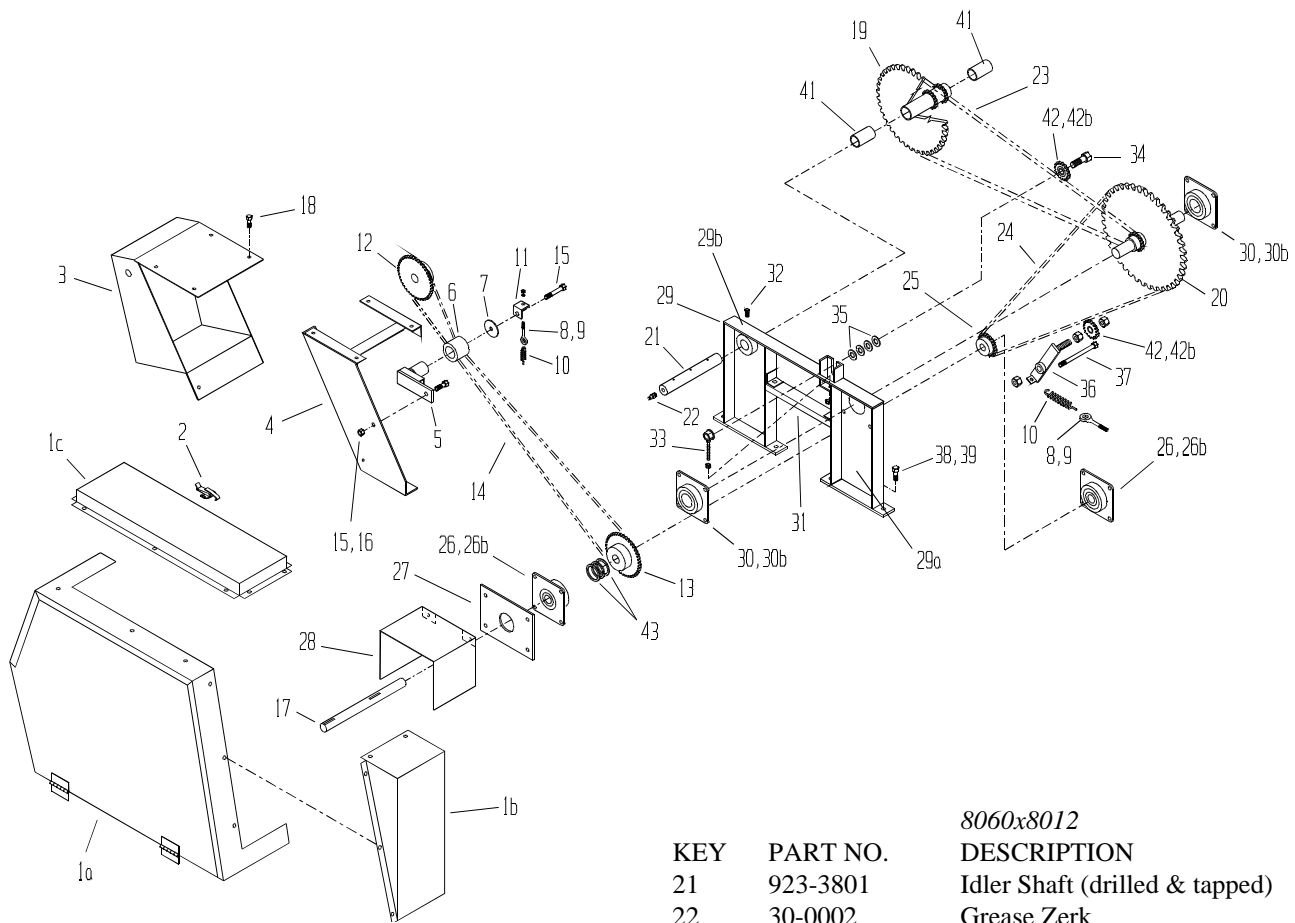
Some models may have been retrofitted with sprocket and chain used on later models. When this is the case; review the parts listing for those items where optional is stated.



KEY	PART NO.	DESCRIPTION
1	924-3801	*Front Shield Assembly, Center
2	32-0018-1	Heavy Duty Latch
3	924-3802	Front Shield Assembly, RH
4	925-3803	Front Bearing Bracket, RH
5	925-3807	Chain Tightener Assembly, RH
6	912-0001	Nylon Roller
7	925-3807-3	Retaining Washer
8	933-3804	5/16x3 Full Thread Eye Bolt
9	813-3118-Z	Nut 5/16
10	929-3601	Spring
11	901-3817-1	Tightener Clip
12	910-0014	Sprocket 80B18x1-1/4B, 3/8 Key
13	910-0015	Sprocket 80B18x1-1/2B, 3/8 Key
14	911-0011	Chain #80x88 pitches
15	801-5013-1.25Z	HHCS 1/2x1-1/4
16	815-5013-Z	Nut 1/2 Lock
17	923-3803	Input Drive Shaft
18	801-3118-.75Z	HHCS 5/16x3/4
19	910-0020	Welded Sprocket Assembly, RH 8045x10011x10011
20	910-0019	Welded Sprocket Assembly, LH 8045x8012
	910-0038	Welded Sprkt Assm, LH-optional 8060x8012

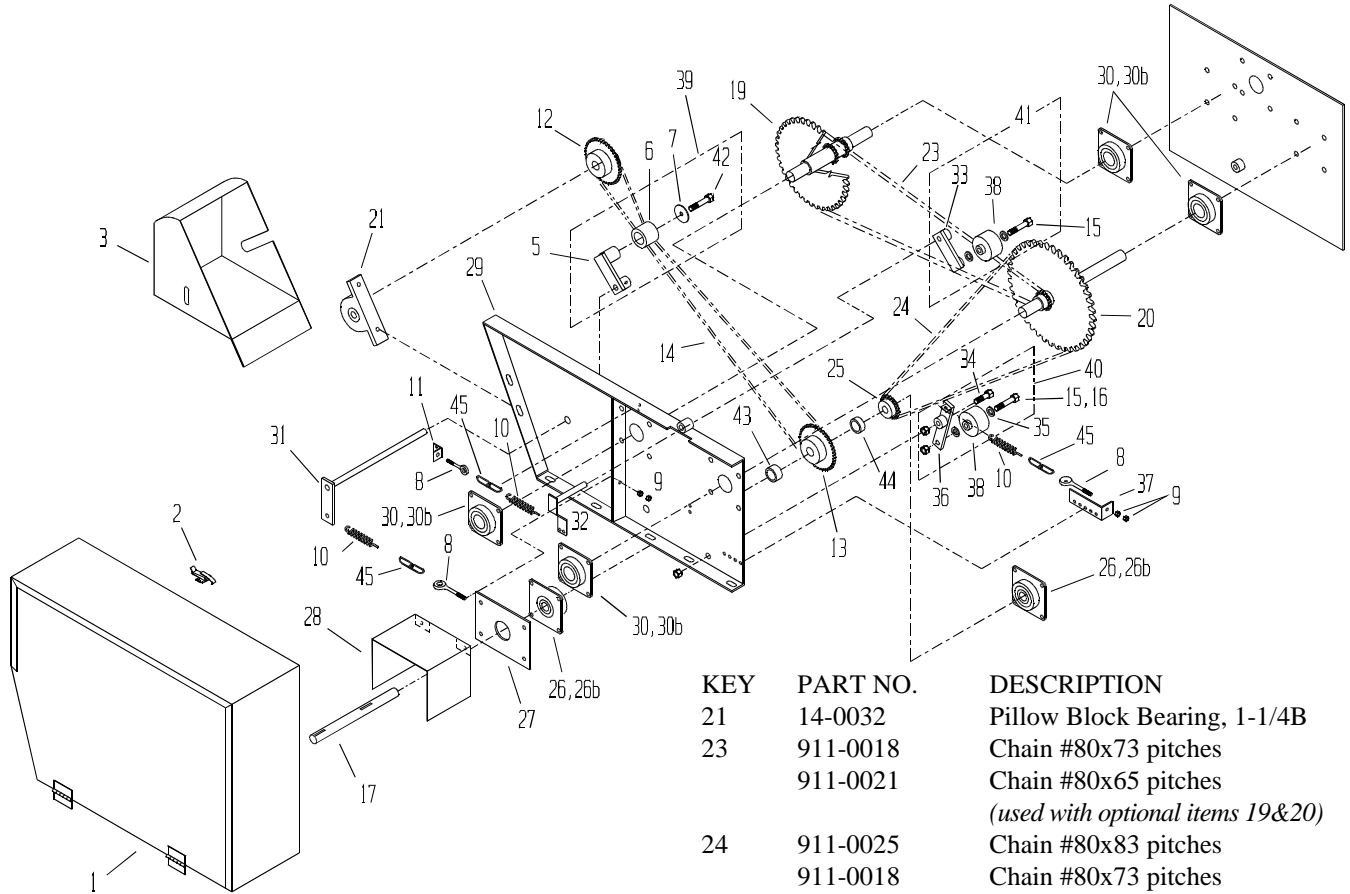
KEY	PART NO.	DESCRIPTION
21	923-3801	Idler Shaft (drilled & tapped)
22	30-0002	Grease Zerk
23	911-0021	Chain #80x65 pitches
24	911-0018	Chain #80x73 pitches
	911-0025	Chain #80x83 pitches (with optional item 20)
25	910-0005	Sprocket 80B12x1-1/2B, 3/8 Key
26	914-3602	Bearing 4 Bolt Flange, 1-1/2B
26B	914-3602-1	1-1/2" Greasable Bearing Only
27	925-3601	Front Bearing Plate
28	931-3601	PTO Shield
29	901-3606-6	Right Front Channel Upright
30	901-3606-7	Left Front Channel Upright
31	901-3823-2	Support Channel
32	933-3620	Set Screw Sq. Hd. 3/8x1
33	925-3804-2	Tightener Bolt Adjuster
34	801-7510-2.5Z	HHCS 3/4x2-1/2
35	805-0075-Z	Washer 3/4 Flat
36	901-3612	Lower Tightener Brkt Assy, LH
37	801-7510-6Z	HHCS 3/4x6
38	801-6311-2Z	HHCS 5/8x2
39	810-6311-Z	Nut 5/8 Flange
40	810-5013-Z	Nut 1/2 Flange
41	913-3603	Welded Sprkt Sleeve Bushing
42	910-0006	8012 Idler Sprocket W/ Bearing
42B	910-0006-1	Bearing Only 3/4"Bx2" OD
	910-0006-1B	Bearing Only 3/4"Bx1-5/8 OD
43	808-150-300-10	Center Shaft Spacer

*If Key 20, Optional Sprocket, is installed; order shield extensions from Series SB listing.

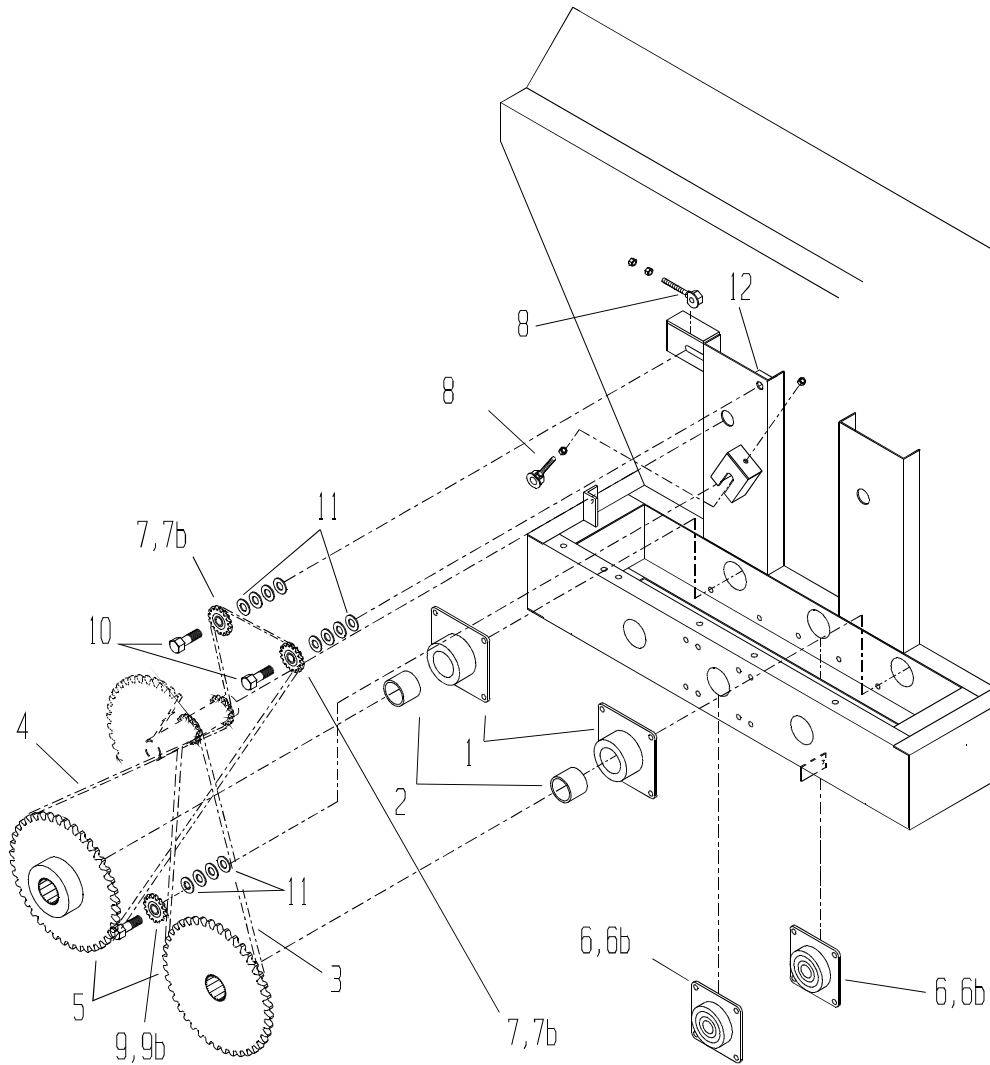


KEY	PART NO.	DESCRIPTION
1A	924-3801	Main Shield
1B	924-3801-7	Side Shield Extension
1C	924-3801-10	Top Shield Extension
2	32-0018-1	Heavy Duty Latch
3	924-3802	Front Shield Assembly, RH
4	925-3803	Front Bearing Bracket, RH
5	925-3807	Chain Tightener Assembly, RH
6	912-0001	Nylon Roller
7	925-3807-3	Retaining Washer
8	933-3804	5/16x3 Full Thread Eye Bolt
9	813-3118-Z	Nut 5/16
10	929-3601	Spring
11	901-3817-1	Tightener Clip
12	910-0014	Sprocket 80B18x1-1/4B, 3/8 Key
13	910-0015	Sprocket 80B18x1-1/2B, 3/8 Key
14	911-0011	Chain #80x88 pitches
15	801-5013-1.25Z	HHCS 1/2x1-1/4
16	815-5013-Z	Nut 1/2 Lock
17	923-3803	Input Drive Shaft
18	801-3118-.75Z	HHCS 5/16x3/4
19	910-0020	Welded Sprocket Assembly, RH 8045x10011x10011
20	910-0045	Welded Sprocket Assembly, LH 8045x8012
	910-0037	Welded Sprkt Assm, LH-optional

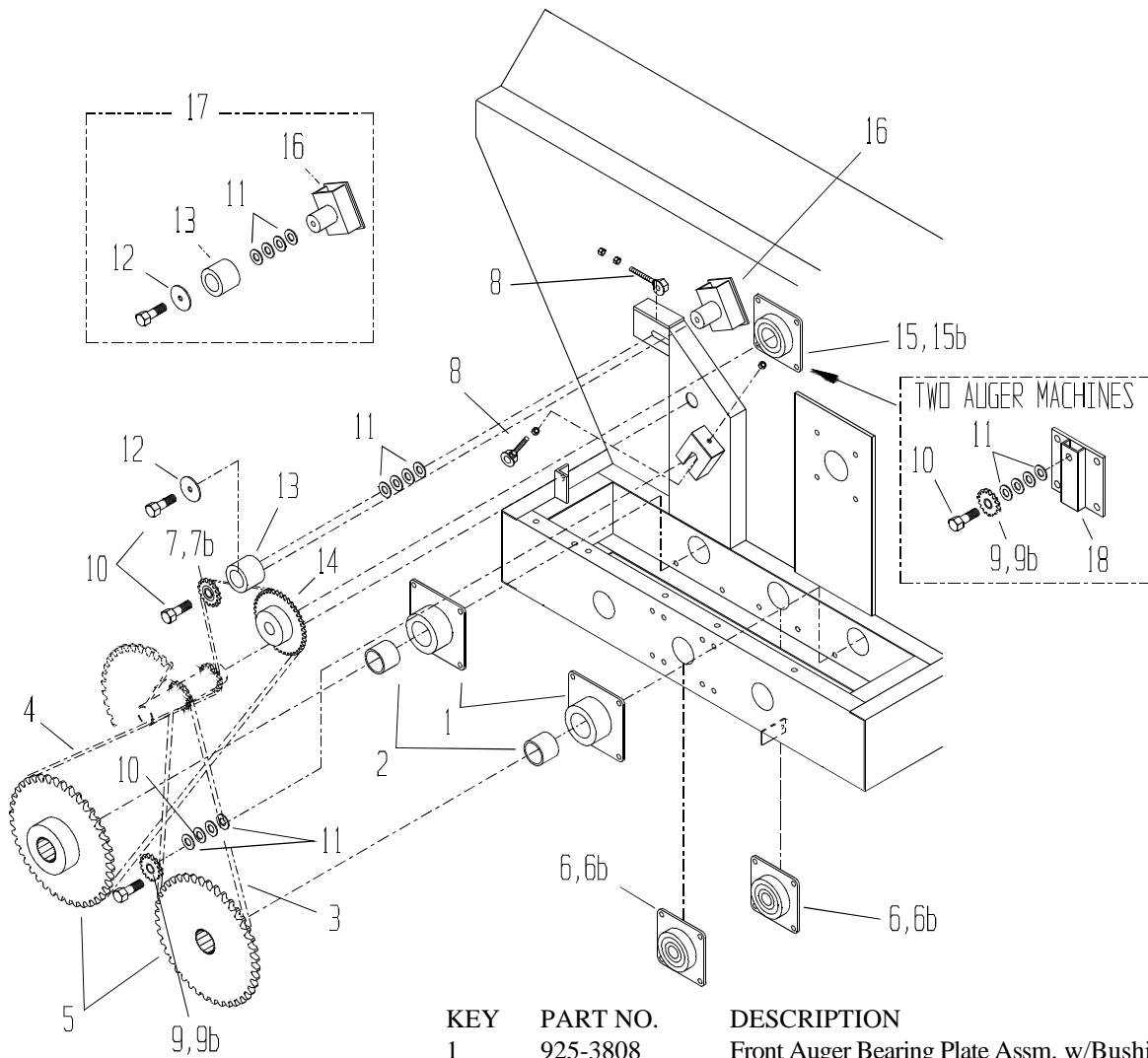
KEY	PART NO.	DESCRIPTION
21	923-3801	Idler Shaft (drilled & tapped)
22	30-0002	Grease Zerk
23	911-0021	Chain #80x65 pitches
24	911-0018	Chain #80x73 pitches
	911-0025	Chain #80x83 pitches (with optional item #20)
25	910-0005	Sprocket 80B12x1-1/2B, 3/8 Key
26	914-3602	Bearing 4 Bolt Flange, 1-1/2B
26B	914-3602-1	1-1/2" Greasable Bearing Only
27	925-3601	Front Bearing Plate
28	931-3601	PTO Shield
29	901-3606-6	Channel Upright Weldment
29A	901-3606-7	Modified Channel Upright Wldmt
29B	901-3831	Channel Upright Top Support
30	14-0031	Bearing, 4 Bolt Flange, 2B
30B	14-0031-1	2" Greasable Bearing Only
31	901-3823-2	Support Channel
32	933-3620	Set Screw Sq. Hd. 3/8x1
33	925-3804-2	Tightener Bolt Adjuster
34	801-7510-2.5Z	HHCS 3/4x2-1/2
35	805-0075-Z	Washer 3/4 Flat
36	901-3612	Lower Tightener Brkt Assy, LH
37	801-7510-6Z	HHCS 3/4x6
38	801-6311-2Z	HHCS 5/8x2
39	810-6311-Z	Nut 5/8 Flange
41	913-3603	Welded Sprkt Sleeve Bushing
42	910-0006	8012 Idler Sprocket W/ Bearing
42B	910-0006-1	Bearing Only 3/4"Bx2" OD
43	808-150-300-10	Center Shaft Spacer



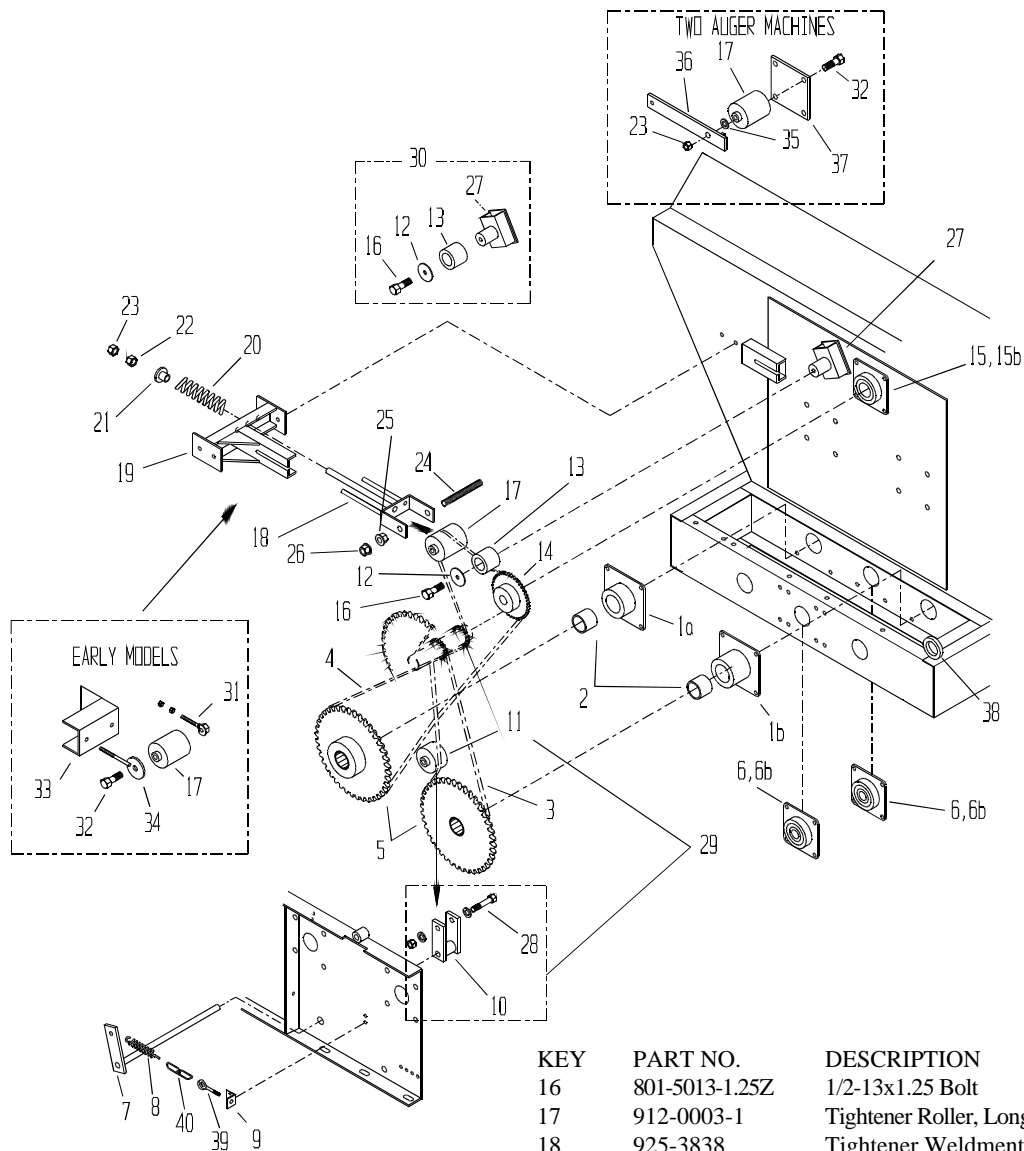
KEY	PART NO.	DESCRIPTION	KEY	PART NO.	DESCRIPTION
1	924-3808	Front Shield Assembly, Center	21	14-0032	Pillow Block Bearing, 1-1/4B
2	32-0018-1	Heavy Duty Latch	23	911-0018	Chain #80x73 pitches
3	924-3809	Front Shield Assembly, RH		911-0021	Chain #80x65 pitches <i>(used with optional items 19&20)</i>
5	925-3832-1	Chain Tightener Brkt Assy, RH	24	911-0025	Chain #80x83 pitches
6	912-0001	Nylon Roller		911-0018	Chain #80x73 pitches <i>(with optional item 20)</i>
7	925-3807-3	Retaining Washer	25	910-0033	Sprocket 80B15x1-1/2B
8	933-3804	5/16x3 Full Thread Eye Bolt		910-0005	Sprocket 80B12x1-1/2B <i>(used with optional item 20)</i>
9	813-3118-Z	Nut 5/16	26	914-3602	Bearing 4 Bolt Flange, 1-1/2B
10	929-3601	Spring	26B	914-3602-1	1-1/2" Greasable Bearing Only
11	925-3825	Tightener Clip (3 hole)	27	925-3601	Front Bearing Plate
12	910-0014	Sprocket 80B18x1-1/4B, 3/8 Key	28	931-3601	PTO Shield
13	910-0015	Sprocket 80B18x1-1/2B, 3/8 Key	29	925-3819	Front Bearing Mount Plate
14	911-0011	Chain #80x88 pitches	30	14-0031	Bearing, 4 Bolt, 2B
15	851-7510-4Z	HHCS 3/4-10x4 Grade 5	30B	14-0031-1	2" Greaseable Bearing Only
16	815-7510-Z	Nut 3/4 Lock	31	925-3835	Tightener Pivot Weldment
17	923-3812	Input Drive Shaft	32	925-3823	Offset Tightener Arm
19	910-0041	Welded Sprocket, RH 8060x12009	33	925-3824-4	Tightener Arm Welded Assy
	910-0042	Welded Sprocket, RH-optional 8045x12009	34	801-7510-2.5Z	HHCS 3/4x2-1/2
20	910-0040	Welded Sprocket, LH 8060x8012	35	805-0075-Z	Washer 3/4 Flat
	910-0043	Welded Sprocket, LH-optional 8045x8012	36	925-3818-2	Tightener Arm Welded Assy
			37	925-3819-5	Tightener Adjust, Bracket
			38	912-0002-1	Tightener Roller 2" (rubber)
			39	925-3832	Tightener Assembly, Complete
			40	925-3818	Tightener Assembly, Complete
			41	925-3824	Tightener Assembly, Complete
			42	801-5013-1.25Z	Bolt 1/2-13x1.25
			43	933-3805	Center Shaft Spacer 1-1/16
			44	933-3806	Center Shaft Spacer 3/4
			45	925-3822-6	2 Links 3/16 Proof Coil Chain



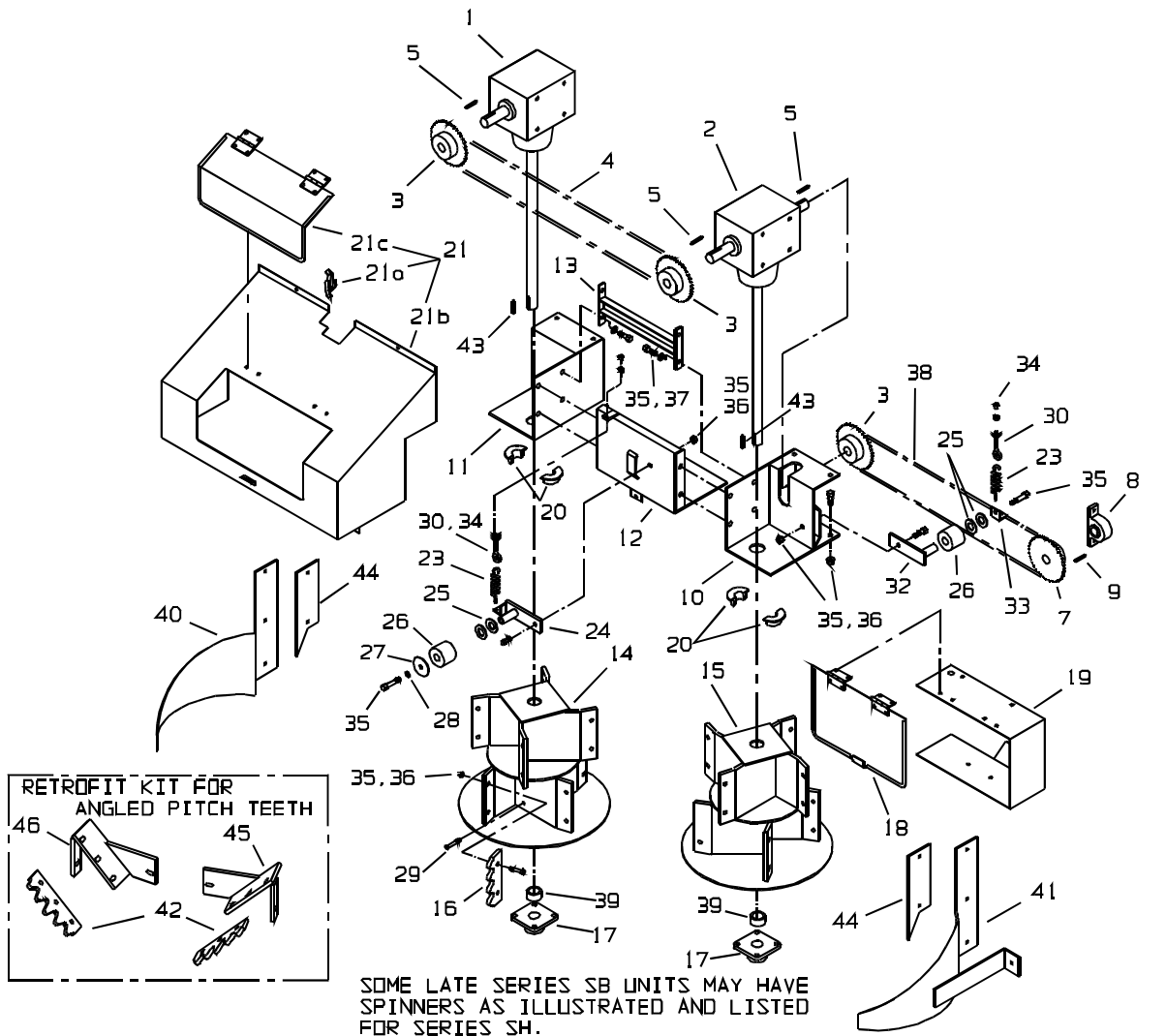
KEY	PART NO.	DESCRIPTION
1	925-3808	Front Auger Bearing Plate Assm. w/Bushing
2	913-3801-1	Auger Bushing Only 2-1/2 IDx2-3/4 ODx2 Long
3	911-0019	Chain #100x68 pitches
4	911-0020	Chain #100x78 pitches
5	910-0012	Sprocket 100B40, Splined
6	914-3602	Bearing 4 Bolt Flange, 1-1/2B
6B	914-3602-1	1-1/2" Greasable Bearing Only
7	910-0017	#10010x3/4"B Idler Sprocket
7B	910-0017-1	Bearing Only 3/4"Bx2-9/16" O.D.
8	925-3804-2	Tightener Bolt Adjuster
9	910-0021	#10016x3/4"B Idler Sprocket
9B	910-0006-1B	Bearing Only 3/4"Bx1-5/8" O.D.
10	801-7510-2.5Z	HHCS 3/4x2-1/2
11	805-0075-Z	Washer 3/4 Flat
12	901-3606-2	3/4 Tapped Channel Block



KEY	PART NO.	DESCRIPTION
1	925-3808	Front Auger Bearing Plate Assm. w/Bushing
2	913-3801-1	Auger Bushing Only 2-1/2 IDx2-3/4 ODx2 Long
3	911-0019	Chain #100x68 pitches
4	911-0020	Chain #100x78 pitches
5	910-0012	Sprocket 100B40, Splined
6	914-3602	Bearing 4 Bolt Flange, 1-1/2B
6B	914-3602-1	1-1/2" Greasable Bearing Only
7	910-0017	#10010x3/4"B Idler Sprocket
7B	910-0017-1	Bearing Only, 3/4"Bx2-9/16" OD
8	925-3804-2	Tightener Bolt Adjuster
9	910-0021	#10016x3/4"B Idler Sprocket
9B	910-0006-1B	Bearing Only, 3/4"Bx1-5/8" OD
10	801-7510-2.5Z	HHCS 3/4x2-1/2
11	805-0075-Z	Washer 3/4 Flat
12	925-3807-3	Nylon Roller Retaining Washer
13	912-0001	Nylon Roller
14	910-0023	Third Auger Sprocket 100B24
15	14-0031	Bearing, 4 Bolt Flange, 2B
15B	14-0031-1	2 " Greaseable Bearing Only
16	925-3816-2	Chain Holddown Welded Brkt Assembly
17	925-3816	Hold Down Assembly Complete
18	925-3817	Adapter Welded Plate Assembly

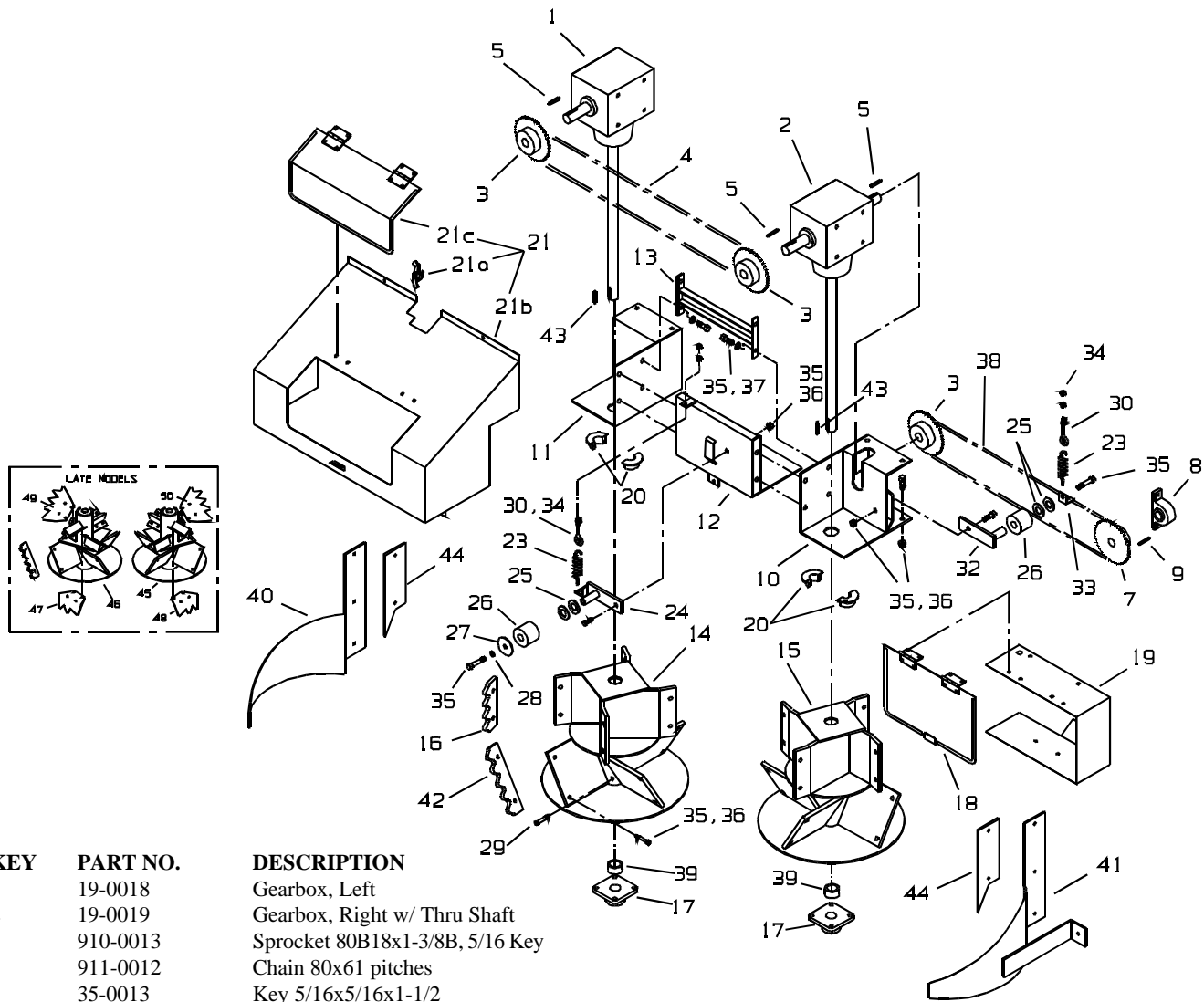


KEY	PART NO.	DESCRIPTION	KEY	PART NO.	DESCRIPTION
1A	925-3833	Front Auger Bearing Plate Assm. with Bushing, RH	16	801-5013-1.25Z	1/2-13x1.25 Bolt
1B	925-3834	Front Auger Bearing Plate Assm. with Bushing, LH	17	912-0003-1	Tightener Roller, Long, 4" (rubber)
2	913-3801-1	Auger Bushing Only 2-1/2 IDx2-3/4 ODx2 Long	18	925-3838	Tightener Weldment Yoke
3	911-0023	Chain #120x56 pitches	19	925-3837	Tightener Mount Weldment
4	911-0024	Chain #120x74 pitches	20	29-0009	Spring, Compression
5	911-0028	Sprocket 120B33, Splined	21	925-3841	Spring Tightener Guide
6	914-3602	Bearing 4 Bolt Flange, 1-1/2B	22	813-7510-Z	3/4 Nut, Regular
6B	914-3602-1	1-1/2" Greasable Bearing Only	23	933-3621	3/4 Jam Nut
7	925-3821	Tightener Pivot Weldment	24	925-3839	3/4x8" Mtg. Bolt Welded Assm
8	929-3601	Spring	25	925-3843	Inner Slide Nut Assembly
9	925-3825	Tightener Clip (3 hole)	26	925-3842	Outer Slide Nut Assembly
10	925-3822-7	Tightener Roller Fork	27	925-3816-2	Chain Hold Down Bracket
11	912-0002-1	Tightener Roller, 2" (rubber)	28	801-7510-4Z	Bolt, 3/4-10x4
12	925-3807-3	Nylon Roller Retaining Washer	29	925-3822	Tightener Assembly, Complete
13	912-0001	Nylon Roller	30	925-3816	Hold Down Assm Complete
14	910-0029	Third Auger Sprocket 120B20	31	925-3804-2	Tightener Bolt Adjuster
15	14-0031	Bearing, 4 Bolt Flange, 2B	32	851-7510-6Z	3/4-10x6 Bolt
15B	14-0031-1	2" Greaseable Bearing Only	33	925-3830-1	Bracket Only
			34	925-3830	Adjuster Bolt
			35	828-0075Z	3/4" SAE Washer
			36	925-3831	Tie Bar
			37	925-3817-1	Adapter Plate
			38	901-3801-41	Hydraulic Hose Holder Ring
			39	933-3804	5/16x3 Full Thread Eye Bolt
			40	925-3822-6	2 Links 3/16" Proof Coil Chain



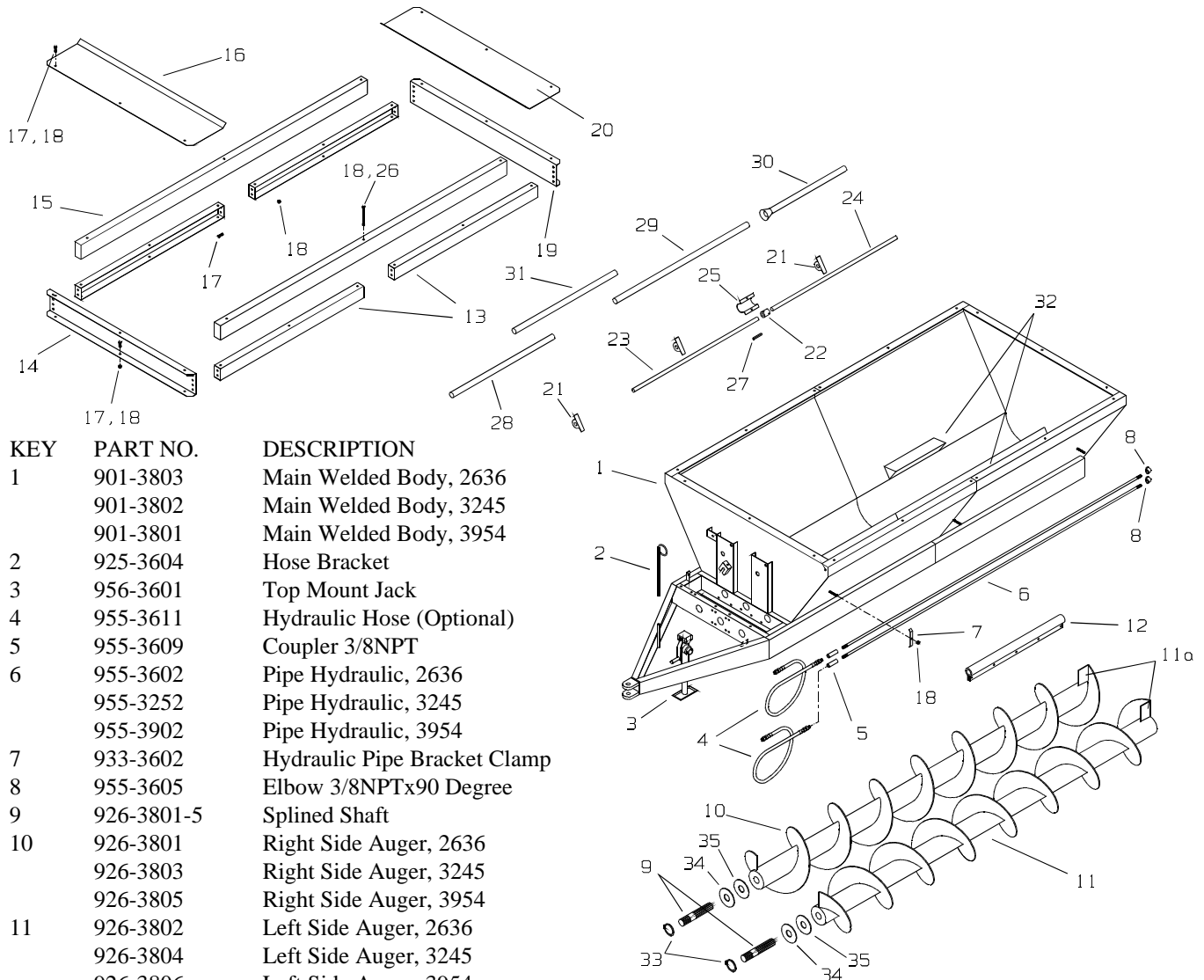
KEY	PART NO.	DESCRIPTION
1	19-0018	Gearbox, Left
2	19-0019	Gearbox, Right w/ Thru Shaft
3	910-0013	Sprocket 80B18x1-3/8B, 5/16 Key
4	911-0012	Chain 80x61 pitches
5	35-0013	Key 5/16x5/16x1-1/2
7	910-0014	Sprocket 80B18x1-1/4B, 3/8 Key
8	14-0032	Pillow Block Bearing 1-1/4B
8B	14-0002-3G	1-1/4" Bearing Only
9	35-0004	Key 3/8x3/8x2
10	925-3802	Gearbox Bracket, Right
11	925-3801	Gearbox Bracket, Left
12	901-3820	Gearbox Support Assembly
13	901-3819	Gearbox Brace Assembly
14	901-3804-13	Spinner Weldment, Left
15	901-3804-14	Spinner Weldment, Right
16	901-3804-1	Spinner Tooth, 3"x8"
17	914-3603	Bearing 4 Bolt Flange 1-3/8B
17B	914-3603-1	1-3/8" Bearing Only
18	924-3803-4	Shield Door, Rear Side
19	924-3803-5	Shield Assembly, Rear Side
20	921-0002	Seal Protector Collar (2 piece)
21	924-3804	Shield Assembly, Rear w/Door
21A	32-0018	Heavy Duty Latch, W/ Catch
21B	924-3804-5	Rear Chain Shield Weldment

KEY	PART NO.	DESCRIPTION
21C	924-3804-6	Door w/Hinge
23	929-3601	Spring
24	901-3813-2	Tightener Assembly, LH
25	808-1.25-1.875-10	Bushing 1-1/4x1-7/8x10GA.
26	912-0001	Nylon Roller
27	925-3807-3	Retaining Washer
28	806-0050-Z	Internal Lock Washer 1/2
29	933-3620	HHCS 3/8x1
30	933-3804	5/16x3 Full Thread Eye Bolt
32	901-3813-3	Tightener Assembly, RH
33	901-3817-1	Tightener Angle Clip, (2 hole)
34	813-3118-Z	Nut 5/16
35	801-5013-1.75Z	HHCS 1/2x1-3/4
36	810-5013-Z	Nut 1/2 Flange
37	805-0050-Z	Washer 1/2 Flat
38	911-0017	#80 Heavy 58 Pitch Chain
39	933-3803	Spacer
40	925-3827	Material Guide, LH
41	925-3828	Material Guide, RH
42	901-3804-16	Spinner Tooth, Long (curved)
43	35-0004	3/8x2" Square Key
44	925-3829	Material Guide Top Filler Plate
45	901-3804-20	Retrofit Mounting Bracket, RH
46	901-3804-21	Retrofit Mounting Bracket, LH



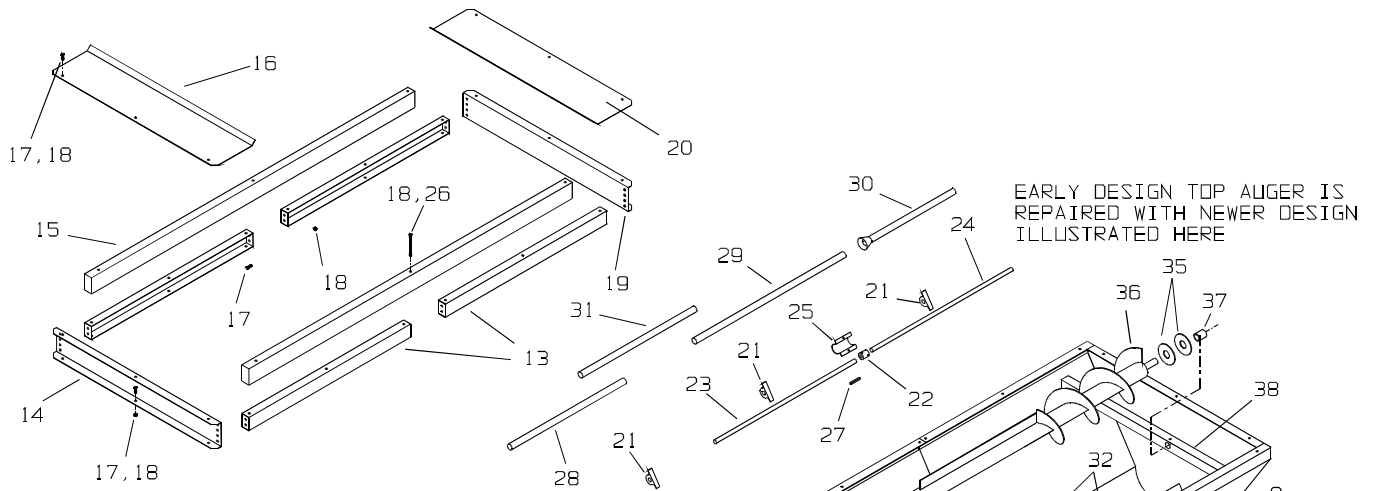
KEY	PART NO.	DESCRIPTION
1	19-0018	Gearbox, Left
2	19-0019	Gearbox, Right w/ Thru Shaft
3	910-0013	Sprocket 80B18x1-3/8B, 5/16 Key
4	911-0012	Chain 80x61 pitches
5	35-0013	Key 5/16x5/16x1-1/2
7	910-0014	Sprocket 80B18x1-1/4B, 3/8 Key
8	14-0032	Pillow Block Bearing 1-1/4B
8B	14-0002-3G	1-1/4" Bearing Only
9	35-0004	Key 3/8x3/8x2
10	925-3802	Gearbox Bracket, Right
11	925-3801	Gearbox Bracket, Left
12	901-3820	Gearbox Support Assembly
13	901-3819	Gearbox Brace Assembly
14	901-3804-13	Spinner Weldment, Left
15	901-3804-14	Spinner Weldment, Right
16	901-3804-1	Spinner Tooth, 3"x8"
17	914-3603	Bearing 4 Bolt Flange 1-3/8B
17B	914-3603-1	1-3/8" Bearing Only
18	924-3803-4	Shield Door, Rear Side
19	924-3803-5	Shield Assembly, Rear Side
20	921-0002	Seal Protector Collar (2 piece)
21	924-3804	Shield Assembly, Rear w/Door
21A	32-0018	Heavy Duty Latch, W/ Catch
21B	924-3804-5	Rear Chain Shield Weldment
21C	924-3804-6	Door w/Hinge
23	929-3601	Spring
24	901-3813-2	Tightener Assembly, LH
25	808-1.25-1.875-10	Bushing 1-1/4x1-7/8x10GA.
26	912-0001	Nylon Roller

KEY	PART NO.	DESCRIPTION
27	925-3807-3	Retaining Washer
28	806-0050-Z	Internal Lock Washer 1/2
29	933-3620	HHCS 3/8x1
30	933-3804	5/16x3 Full Thread Eye Bolt
32	901-3813-3	Tightener Assembly, RH
33	901-3817-1	Tightener Angle Clip, (2 hole)
34	813-3118-Z	Nut 5/16
35	801-5013-1.75Z	HHCS 1/2x1-3/4
36	810-5013-Z	Nut 1/2 Flange
37	805-0050-Z	Washer 1/2 Flat
38	911-0017	#80 Heavy 58 Pitch Chain
39	933-3803	Spacer
40	925-3827	Material Guide, LH
41	925-3828	Material Guide, RH
42	901-3804-16	Spinner Tooth, Long (curved)
43	35-0004	3/8x2" Square Key
44	925-3829	Material Guide Top Filler Plate
45	901-3804-14	Spinner Weldment, RH
46	901-3804-13	Spinner Weldment, LH
47	901-3835-1-S	3-Point Tooth Paddle, LH
48	901-3834-1-S	3-Point Tooth Paddle, RH
49	901-3835-1	4-Point Tooth Paddle, LH
50	901-3834-1	4-Point Tooth Paddle, RH



KEY	PART NO.	DESCRIPTION
1	901-3803	Main Welded Body, 2636
	901-3802	Main Welded Body, 3245
	901-3801	Main Welded Body, 3954
2	925-3604	Hose Bracket
3	956-3601	Top Mount Jack
4	955-3611	Hydraulic Hose (Optional)
5	955-3609	Coupler 3/8NPT
6	955-3602	Pipe Hydraulic, 2636
	955-3252	Pipe Hydraulic, 3245
	955-3902	Pipe Hydraulic, 3954
7	933-3602	Hydraulic Pipe Bracket Clamp
8	955-3605	Elbow 3/8NPTx90 Degree
9	926-3801-5	Splined Shaft
10	926-3801	Right Side Auger, 2636
	926-3803	Right Side Auger, 3245
	926-3805	Right Side Auger, 3954
11	926-3802	Left Side Auger, 2636
	926-3804	Left Side Auger, 3245
	926-3806	Left Side Auger, 3954
11A	926-3801-8	Auger Flighting Support Gusset
12	901-3809	Auger Hold Down Pipe Wldmt
13	901-3816-17	Extension Side Rail, 2636
	901-3816-19	Extension Side Rail, 3245
	901-3816-21	Extension Side Rail, 3954
14	901-3816-3	Extension Front Rail
15	931-3603	Oak Top Rail, 2636
	931-3604	Oak Top Rail, 3245
	931-3605	Oak Top Rail, 3954
16	901-3830-1	Front Splash Guard
17	801-5013-1.25Z	HHCS 1/2x1-1/4
18	810-5013-Z	Nut 1/2 Flange
19	901-3816-4	Extension Back Rail
20	901-3830-2	Rear Splash Guard
21	14-0032	Pillow Block Bearing 1-1/4B
21B	14-0002-3G	1-1/4" Bearing Only
22	37-0007	Shaft Coupler 1-1/4
23	923-3805	Shaft Front Side, 2636
	923-3806	Shaft Front Side, 3245
	923-3807	Shaft Front Side, 3954

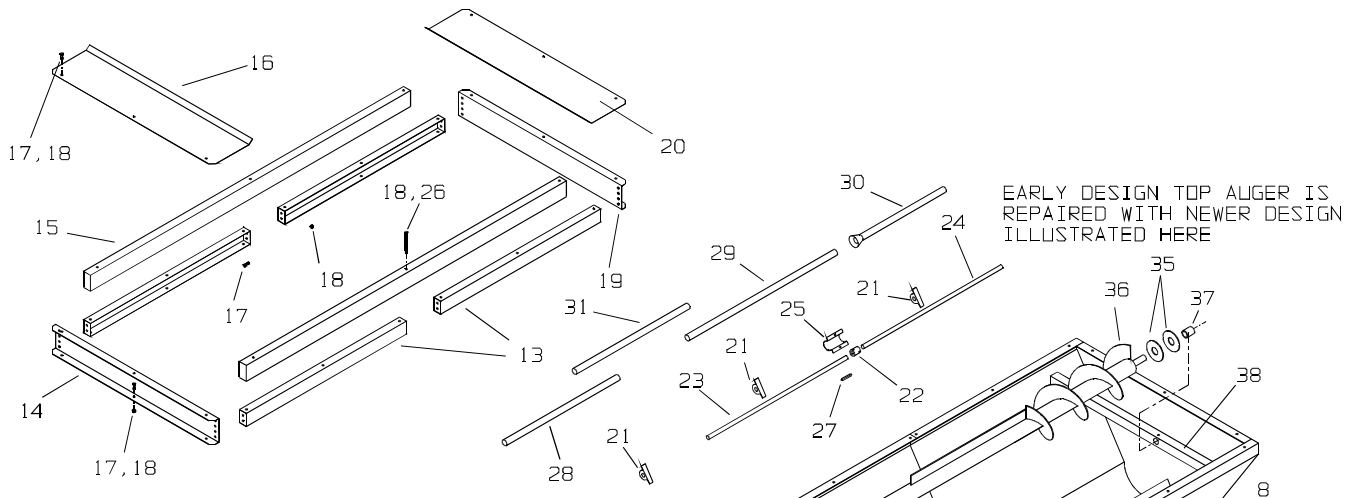
KEY	PART NO.	DESCRIPTION
24	923-3804	Shaft Rear Side
25	924-3807	Shaft Coupler Shield
26	800-3816-4.5Z	Carriage Bolt 3/8x4-1/2
27	35-0014	1/4x1/4x4-1/2" Key
28	931-3804	Side Shaft Front Guard, 2636
	931-3801	Side Shaft Front Guard, 3245
	931-3804	Side Shaft Front Guard, 3954
29	931-3806	Side Shaft Center Guard
30	931-3803	Side Shaft Rear Guard, 2636
	931-3803	Side Shaft Rear Guard, 3245
	931-3803	Side Shaft Rear Guard, 3954
31	931-3805	Side Shaft Front Center Guard, 3245
	931-3807	Side Shaft Front Center Guard, 3954
32	901-3808	Side, Auger Hold Down Wldmt
33	33-0025	2-1/2" Retaining Ring
34	933-3802	Auger Washer
35	933-3801	Bronze Washer



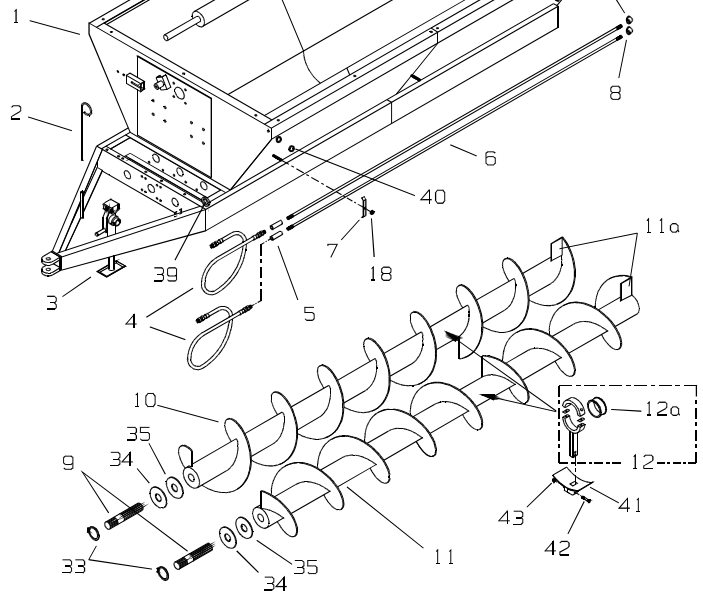
KEY	PART NO.	DESCRIPTION
1	901-3803	Main Welded Body, 2636
	901-3802	Main Welded Body, 3245
	901-3801	Main Welded Body, 3954
2	925-3604	Hose Bracket
3	956-3601	Top Mount Jack
4	955-3611	Hydraulic Hose (Optional)
5	955-3609	Coupler 3/8NPT
6	955-3602	Pipe Hydraulic, 2636
	955-3252	Pipe Hydraulic, 3245
	955-3902	Pipe Hydraulic, 3954
7	933-3602	Hydraulic Pipe Bracket Clamp
8	955-3605	Elbow 3/8NPTx90 Degree
9	926-3801-5	Splined Shaft
10	926-3801	Right Side Auger, 2636
	926-3803	Right Side Auger, 3245
	926-3805	Right Side Auger, 3954
11	926-3802	Left Side Auger, 2636
	926-3804	Left Side Auger, 3245
	926-3806	Left Side Auger, 3954
11A	926-3801-8	Auger Flighting Support Gusset
12	901-3809	Auger Hold Down Pipe Wldmt
13	901-3816-17	Extension Side Rail, 2636
	901-3816-19	Extension Side Rail, 3245
	901-3816-21	Extension Side Rail, 3954
14	901-3816-3	Extension Front Rail
15	931-3603	Oak Top Rail, 2636
	931-3604	Oak Top Rail, 3245
	931-3605	Oak Top Rail, 3954
16	901-3830-1	Front Splash Guard
17	801-5013-1.25Z	HHCS 1/2x1-1/4
18	810-5013-Z	Nut 1/2 Flange
19	901-3816-4	Extension Back Rail
20	901-3830-2	Rear Splash Guard
21	14-0032	Pillow Block Bearing 1-1/4B
21B	14-0002-3G	1-1/4" Bearing Only
22	37-0007	Shaft Coupler 1-1/4
23	923-3805	Shaft Front Side, 2636
	923-3806	Shaft Front Side, 3245
	923-3807	Shaft Front Side, 3954
24	923-3804	Shaft Rear Side

EARLY DESIGN TOP AUGER IS REPAIRED WITH NEWER DESIGN ILLUSTRATED HERE

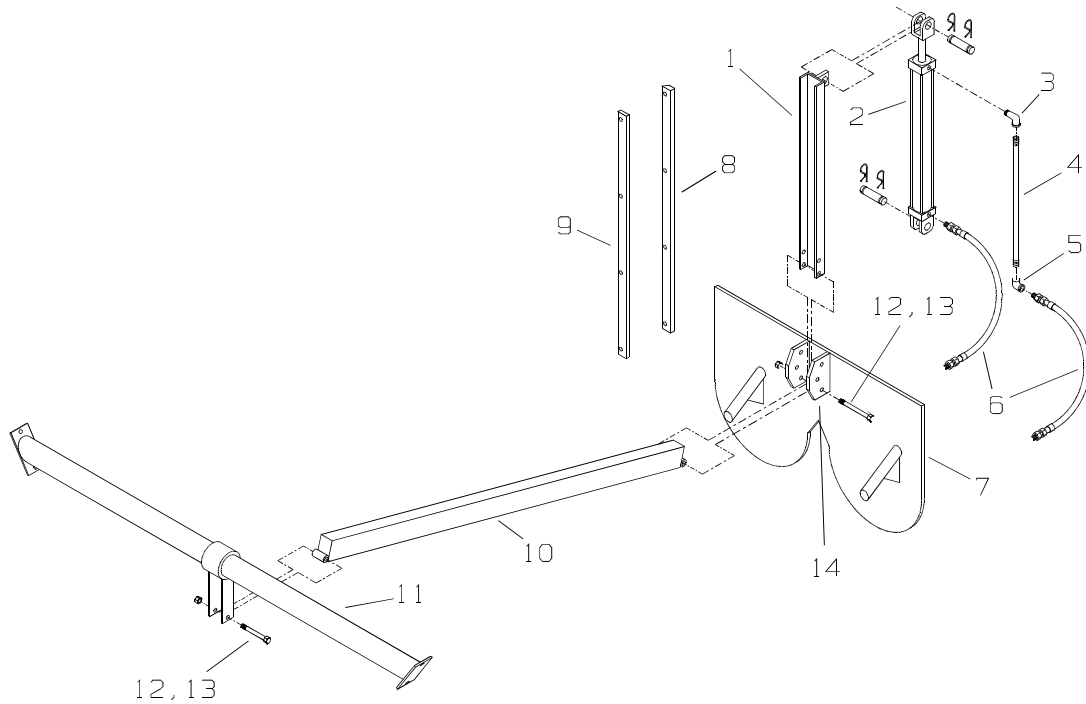
KEY	PART NO.	DESCRIPTION
25	924-3807	Shaft Coupler Shield
26	800-3816-4.5Z	Carriage Bolt 3/8x4-1/2
27	35-0014	1/4x1/4x4-1/2" Key
28	931-3804	Side Shaft Front Guard, 2636
	931-3801	Side Shaft Front Guard, 3245
	931-3804	Side Shaft Front Guard, 3954
29	931-3806	Side Shaft Center Guard
	931-3803	Side Shaft Rear Guard, 2636
	931-3803	Side Shaft Rear Guard, 3245
30	931-3803	Side Shaft Rear Guard, 3954
	931-3805	Side Shaft Front Center Guard, 3245
	931-3807	Side Shaft Front Center Guard, 3954
31	901-3808	Side Auger Hold Down Wldmt
	33-0025	2-1/2" Retaining Ring
	933-3802	Auger Washer
32	933-3606	Bronze Washer
	926-3810	Third Auger, 2636
	926-3811	Third Auger, 3245
33	926-3812	Third Auger, 3954
	913-3601-2	Third Auger Bronze Bushing
	925-3815	Third Auger Rear Support Assy



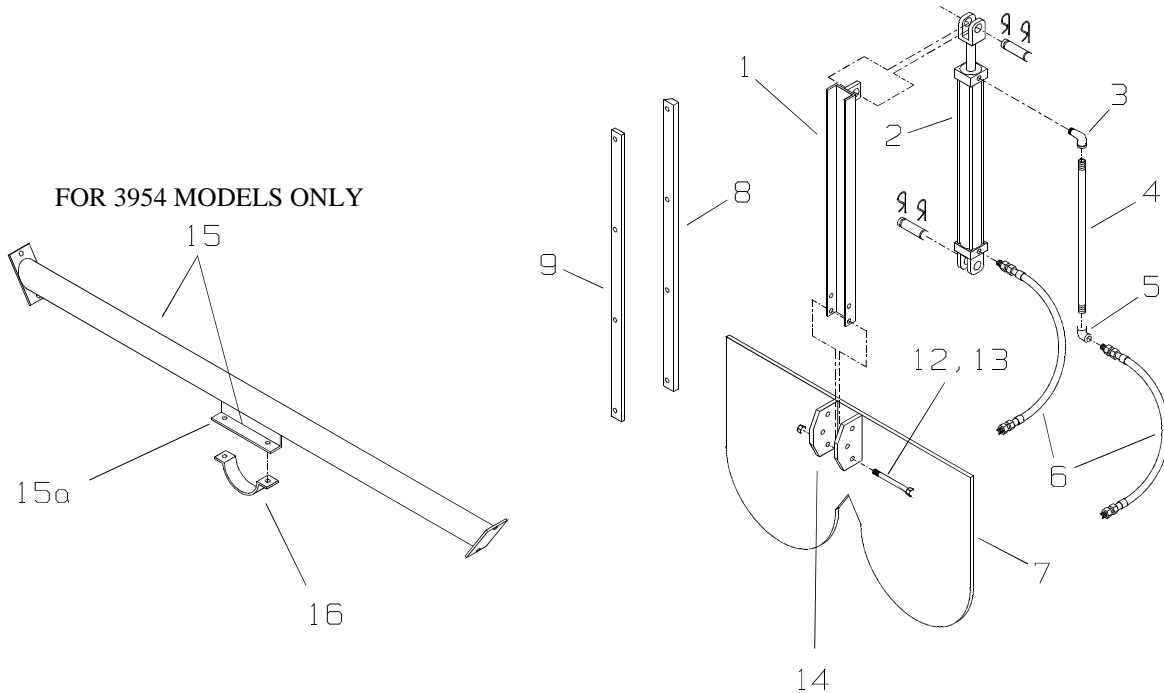
KEY	PART NO.	DESCRIPTION
1	901-3803	Main Welded Body, 2636
	901-3802	Main Welded Body, 3245
	901-3801	Main Welded Body, 3954
2	925-3604	Hose Bracket
3	956-3601	Top Mount Jack
4	955-3611	Hydraulic Hose (Optional)
5	955-3609	Coupler 3/8NPT
6	955-3602	Pipe Hydraulic, 2636
	955-3252	Pipe Hydraulic, 3245
	955-3902	Pipe Hydraulic, 3954
7	933-3602	Hydraulic Pipe Bracket Clamp
8	955-3605	Elbow 3/8NPTx90 Degree
9	926-3801-5	Splined Shaft
10	926-3801	Right Side Auger, 2636
	926-3803	Right Side Auger, 3245
	926-3805	Right Side Auger, 3954
11	926-3802	Left Side Auger, 2636
	926-3804	Left Side Auger, 3245
	926-3806	Left Side Auger, 3954
11A	926-3801-8	Auger Flighting Support Gusset
12	901-3840	Auger Hold Down Wldmt w/brg.
12A	901-3840-1	Nylon Bearing
	901-3840-2	Nylon Bearing
13	901-3816-17	Extension Side Rail, 2636
	901-3816-19	Extension Side Rail, 3245
	901-3816-21	Extension Side Rail, 3954
14	901-3816-3	Extension Front Rail
15	931-3603	Oak Top Rail, 2636
	931-3604	Oak Top Rail, 3245
	931-3605	Oak Top Rail, 3954
16	901-3830-1	Front Splash Guard
17	801-5013-1.25Z	HHCS 1/2x1-1/4
18	810-5013-Z	Nut 1/2 Flange
19	901-3816-4	Extension Back Rail
20	901-3830-2	Rear Splash Guard
21	14-0032	Pillow Block Bearing 1-1/4B
21B	14-0002-3G	1-1/4" Bearing Only
22	37-0007	Shaft Coupler 1-1/4
23	923-3809	Shaft Front Side, 2636
	923-3810	Shaft Front Side, 3245
	923-3811	Shaft Front Side, 3954
24	923-3804	Shaft Rear Side
25	924-3807	Shaft Coupler Shield
26	800-3816-4.5Z	Carriage Bolt 3/8x4-1/2



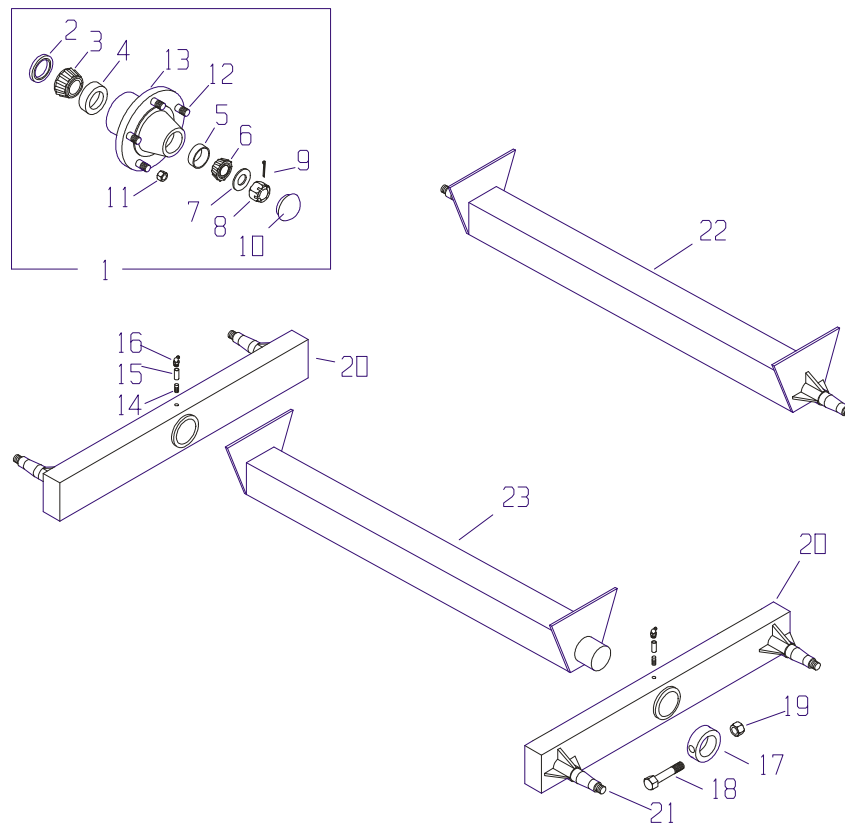
KEY	PART NO.	DESCRIPTION
27	35-0014	1/4x1/4x4-1/2" Key
28	931-3809	Side Shaft Front Guard, 2636
	931-3808	Side Shaft Front Guard, 3245
	931-3809	Side Shaft Front Guard, 3954
29	931-3806	Side Shaft Center Guard
30	931-3803	Side Shaft Rear Guard, 2636
	931-3803	Side Shaft Rear Guard, 3245
	931-3803	Side Shaft Rear Guard, 3954
31	931-3805	Side Shaft Front Center Guard, 3245
	931-3807	Side Shaft Front Center Guard, 3954
33	33-0025	2-1/2" Retaining Ring
34	933-3802	Auger Washer
35	933-3606	Bronze Washer
36	926-3810	Third Auger, 2636
	926-3811	Third Auger, 3245
	926-3812	Third Auger, 3954
37	913-3601-2	Third Auger Bronze Bushing
38	925-3815	Third Auger Rear Support Assy
39	901-3801-41	Hydraulic Hose Holder Ring
40	901-3801-40	Scraper Holder Ring
41	901-3841	Auger Hold Down Attaching Brkt
42	851-5013-3Z	1/2x3" Gr. 5 Bolt
43	815-5013-Z	1/2"-13 Lock Nut



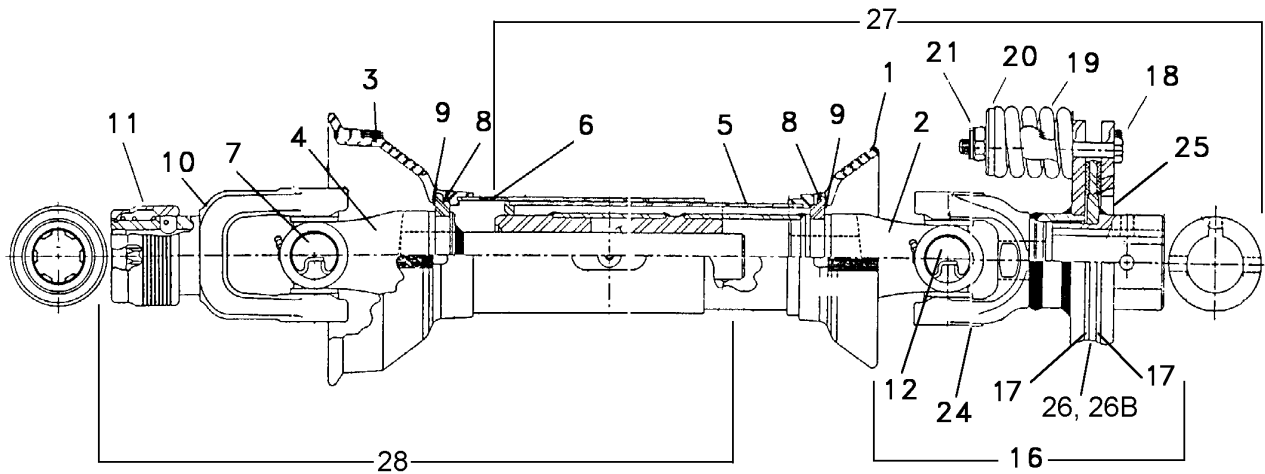
KEY	PART NO.	DESCRIPTION
1	901-3807	Hyd. Cylinder Channel Assembly
	901-3807-L	Hyd. Cylinder Channel Assembly <i>Late SH Models w/1" wider opening</i>
2	955-3613	Hyd. Cylinder 20" Stroke
3	955-0003	Street El 3/8NPTx90 Degree
4	901-3806-1	Hyd. Pipe 21"
5	955-3605	Elbow 3/8NPTx90 Degree
6	955-0002	Hyd. Hose
7	901-3805	Back Gate Welded Assembly
	901-3805-S	Back Gate Welded Assembly <i>Late SH Models w/1" wider opening</i>
8	925-3602	Back Gate Slide Spacer
9	925-3603	Back Gate Slide
10	901-3811	Anti Bridge Tube Assembly
11	901-3810	Anti Bridge Support Pipe Assembly
12	801-6311-3.5Z	HHCS 5/8x3-1/2
13	815-3816-Z	Nut 5/8 Inserted Lock
14	901-3805-1-L	Hydraulic Ram Channel Mount Tab



KEY	PART NO.	DESCRIPTION
1	901-3807	Hyd. Cylinder Channel Assembly
	901-3807-L	Hyd. Cylinder Channel Assembly <i>Late SH Models w/1" wider opening</i>
2	955-3613	Hyd. Cylinder 20" Stroke
3	955-0003	Street El 3/8NPTx90 Degree
4	901-3806-1	Hyd. Pipe 21"
5	955-3605	Elbow 3/8NPTx90 Degree
6	955-0002	Hyd. Hose
7	901-3805-3RD	Back Gate Welded Assembly
	901-3805-S-3RD	Back Gate Welded Assembly <i>Late SH Models w/1" wider opening</i>
8	925-3602	Back Gate Slide Spacer
9	925-3603	Back Gate Slide
12	801-6311-3.5Z	HHCS 5/8x3-1/2
13	815-3816-Z	Nut 5/8 Inserted Lock
14	901-3805-1-L	Hydraulic Ram Channel Mount Tab
15	901-3832	3rd Auger Front Support Assembly
15a	901-3832-1	1-3/4x1-3/4x9" Angle
16	901-3832-2	3rd Auger U Support Bracket



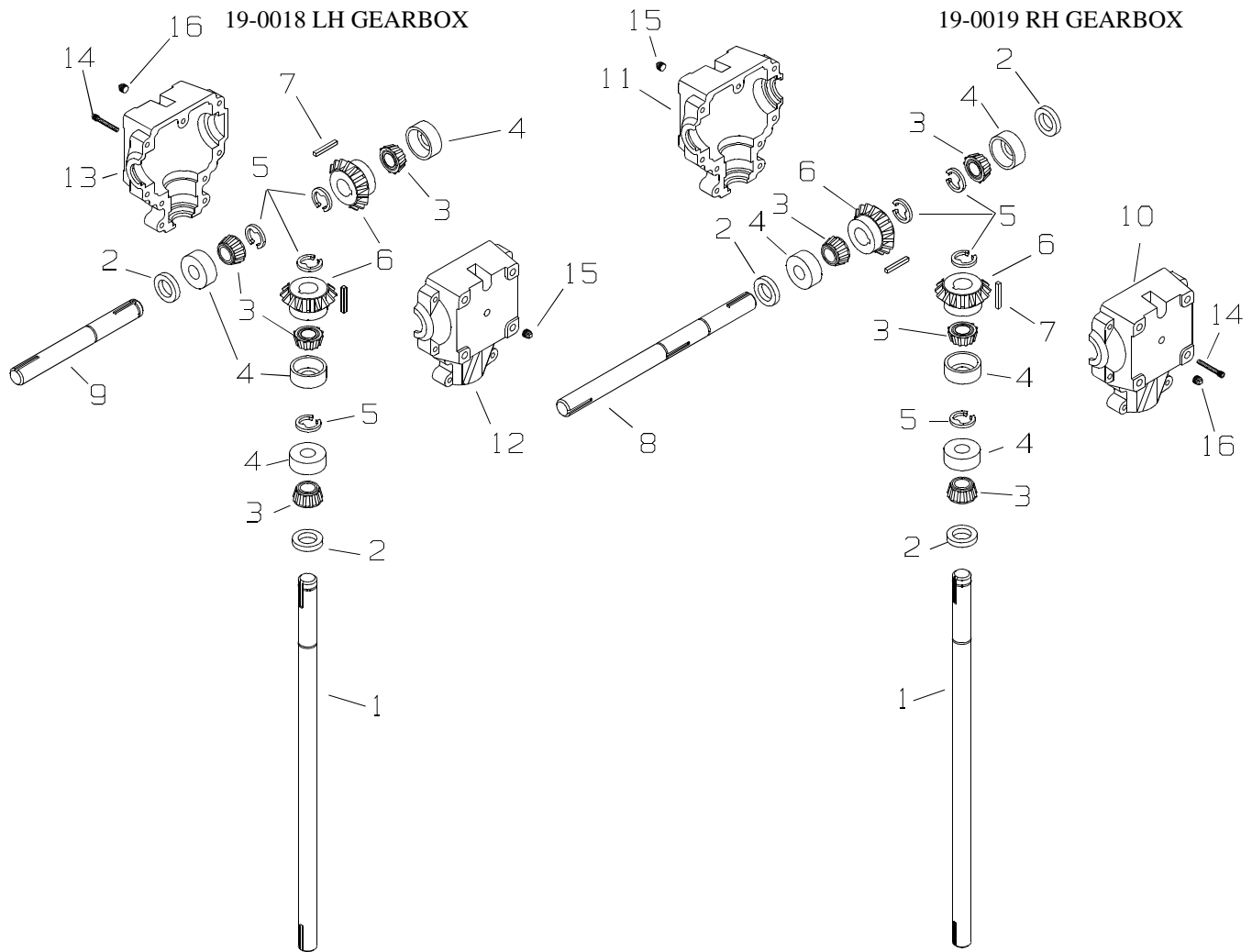
KEY	PART NO. 3954	PART NO. 2636&3245	DESCRIPTION
1	75-0207	75-0205	Hub Assembly (complete)
2	75-0207-2	75-0205-2	Seal
3	75-0207-3	75-0205-3	Bearing Cone
4	75-0207-4	75-0205-4	Bearing Cup
5	75-0202-4	75-0202-4	Bearing Cup
6	75-0202-3	75-0202-3	Bearing Cone
7	75-0205-7	75-0205-7	Washer
8	75-0205-8	75-0205-8	Nut
9	75-0205-9	75-0205-9	Cotter Pin
10	75-0205-10	75-0205-10	Hub Cap
11	75-0205-11	75-0205-11	Lug Nut
12	75-0207-12	75-0205-12	Stud Bolt
13	75-0207-1	75-0205-1	Hub Only w/Races & Studs
14	30-0008	30-0008	Nipple 1/8NPT
15	30-0009	30-0009	Coupler 1/8NPT
16	30-0006	30-0006	Zerk 1/8NPTx90°
17	901-3615-11	901-3615-11	Locking Collar
18	801-3816-5.5Z	801-3816-5.5Z	HHCS 3/8x5-1/2
19	813-3816-Z	813-3816-Z	Locknut 3/8 Center
20	901-3818-1	901-3616	Tandem w/Spindles
21	75-0107	75-0104	Spindle Only
22	not available	901-3828	Single Axle w/Spindles
23	901-3829	901-3829	Tandem Axle Assembly Only



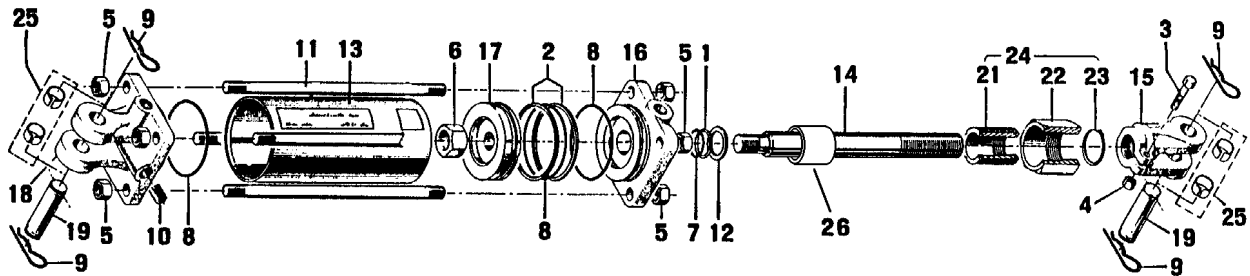
TRACTOR HALF

SPREADER HALF

KEY	PART NO.	DESCRIPTION
	918-0001	Assembly Complete
1	918-0001-1	Joint & Tube Half Asm. w/Guard (Spreader Half)
2	918-0001-2	Yoke & Tube
3	918-0001-3	Joint & Shft Asm. w/Guard (Tractor Half)
4	918-0001-4	Yoke & Shaft
5	918-0001-5	Inner Guard
6	918-0001-6	Outer Guard
7	918-0001-7	“W” Repair Kit
8	918-0001-8	Nylon Bearing
9	918-0001-9	Bearing Retaining Ring
10	918-0001-10	Slide Lock Yoke (540 RPM)
11	918-0001-11	Slide Lock Repair Kit
12	918-0001-12	Slide Lock Retaining Ring
13	918-0001-13	Slide Lock Spring
14	918-0001-14	Slide Lock Collar
15	918-0001-15	Slide Lock Dawl
16	918-0001-16	Friction Clutch Assembly
17	918-0001-17	Friction Disc
18	918-0001-18	Bolt
19	918-0001-19	Friction Clutch Spring
20	918-0001-20	Washer
21	918-0001-21	Nut
22	918-0001-22	Outer Safety Decal
23	918-0001-23	Inner Safety Decal
24	918-0001-24	Yoke & Inner Clutch Plate Assembly
25	918-0001-25	Outer Friction Clutch Plate
26	918-0001-26	Hub W/ Plate and Bushing
26B	918-0001-26B	Bushing Only for Hub
27	918-0001-27	Yoke & Tube w/ Joint and Clutch, less Guard
28	918-0001-28	Joint & Shaft Assembly, less Guard



KEY	PART NO.	DESCRIPTION
1	19-0018-1	Pinion Shaft
2	19-0018-2	Seal
3	19-0018-3	Bearing Cone
4	19-0016-3	Bearing Cup
5	19-0018-4	Retaining Ring
6	19-0018-5	Gear 1:1
7	19-0018-6	Key 5/16x5/16x1-1/2
8	19-0019-1	Right Side Gearbox Cross Shaft
9	19-0018-7	Left Side Gearbox Cross Shaft
10	19-0019-2	Right Side Gearbox Casting (thru holes)
11	19-0019-3	Right Side Gearbox Casting (tapped holes)
12	19-0016-8	Left Side Gearbox Casting (tapped holes)
13	19-0016-2	Left Side Gearbox Casting (thru holes)
14	19-0016-11	Bolt 2 1/4" SHCS
15	19-0016-12	Plug 1/2NPT Vented
16	19-0016-5	Plug 1/2NPT Plain



KEY	PART NO.	DESCRIPTION
	955-3613	Hydraulic Cylinder, Complete, 2"x20"
1	955-3613-1	Back Up Washer (Rod)
2	955-3613-2	Back Up Washer (Piston)
3	955-3613-3	Clevis Bolt
4	955-3613-4	Nut (Clevis Bolt)
5	955-3613-5	Nut (Tie Rod)
6	955-3613-6	Nut (Piston)
7	955-3613-7	O-Ring (Rod Seal)
8	955-3613-8	O-Ring (Piston & Tube Seal)
9	955-3613-9	Pin Clip
10	955-3613-10	Pipe Plug (Steel)
11	955-3613-11	Tie Rod
12	955-3613-12	Rod Wiper
13	955-3613-13	Tube
14	955-3613-14	Piston Rod
15	955-3613-15	Clevis
16	955-3613-16	Head
17	955-3613-17	Piston
18	955-3613-18	Base
19	955-3613-19	Clevis Pins (Rod & Base)
20	955-3613-20	Seal Kit (Contains items 1,2,7,8,12)
21	955-3613-21	Outside Stop Collar
22	955-3613-22	Inside Stop Collar
23	955-3613-23	Retaining Ring
24	955-3613-24	Mechanical Depth Stop Assembly
25	955-3613-25	Hardened Clevis Insert (optional)
26	955-3613-26	Inner Cylinder Spacer

Omit for late SH Series with 1" wider opening