

OPERATORS AND PARTS MANUAL NO. 02-1-QD  
FOR  
3100 & 4100 SERIES

# MEYER

## QUICK DUMP REAR UNLOAD BOX

<u>3100 SERIES</u>	<u>4100 SERIES</u>
3114	4116
3116	4118
3118	4120
3120	4122
	4124

DO NOT OPERATE EQUIPMENT UNTIL THIS MANUAL HAS BEEN READ AND UNDERSTOOD.



MEMBER



Over  
**65 years**  
of service  
to our customers

MANUFACTURED BY

## *Meyer Mfg. Corp.*

County Hwy. A West  
P.O. Box 405

Dorchester, Wisconsin 54425-0405  
Phone 715-654-5132 • FAX 715-654-5513

1-800-325-9103

[www.meyermfg.com](http://www.meyermfg.com)

E-mail: [sales@meyermfg.com](mailto:sales@meyermfg.com)





# TABLE OF CONTENTS

INTRODUCTION . . . . .	2
HOW TO READ YOUR SERIAL NUMBER . . . . .	2
MANUFACTURER’S WARRANTY . . . . .	4
SAFETY . . . . .	5
SAFETY DECALS. . . . .	6
PRE-OPERATION . . . . .	7
TRANSPORTING . . . . .	8
OPERATION . . . . .	9
ADJUSTMENTS . . . . .	11
APRON CHAIN. . . . .	11
ROLLER CHAIN DRIVES . . . . .	11
LUBRICATION. . . . .	12
REPAIR PARTS . . . . .	14
APRON - REAR UNLOAD QUICK DUMP . . . . .	14
3100-4100 SERIES HYDRAULIC REAR UNLOAD COMPONENTS . . . . .	18
19-0026 HYDRAULIC REAR GEARBOX . . . . .	22
19-0126 REAR GEARBOX. . . . .	24
19-0201 REAR GEARBOX. . . . .	26
19-0044 1:1 RATIO GEARBOX . . . . .	28
18-0119 UNIVERSAL JOINT TELESCOPING ASSEMBLY . . . . .	30
18-0019 12R UNIVERSAL JOINT TELESCOPING ASSEMBLY W/GUARD . . . . .	31
DRIVE TRAIN . . . . .	32
REAR DISCHARGE DOOR COMPONENTS . . . . .	34
DUMP BOX PARTS . . . . .	36
WELDED BOX PARTS. . . . .	42
HIGHWAY TRANSPORT AG LIGHTS. . . . .	46
GATE DELAY . . . . .	48
GATE DELAY/RETURN LINE (OPTIONAL) . . . . .	50
TIE DOWN KIT FOR STEEL BOX . . . . .	52
“TROUBLE SHOOTING”. . . . .	53
“SPECIFICATIONS” . . . . .	54

**NEW MEYER (REAR UNLOAD) FORAGE BOX**  
**MANUFACTURER'S WARRANTY**

MAY1, 2010

- I. The "Product Registration & Inspection Certificate" along with the original billing invoice "Owner's Registration Form" must be completed in full and promptly returned to Meyer Mfg. Corp. for this warranty to become both valid and effective. All warranties on New Meyer Forage Boxes shall apply only to the original retail customer from an authorized Meyer Mfg. Corp. dealership.
- II. This warranty shall not apply to any Meyer Forage Box which has been subjected to misuse, negligence, alteration, accident, incorrect operating procedures, or which shall have been repaired with parts other than those obtained through Meyer Mfg. Corp.
- III. Meyer Mfg. Corp. warrants New Meyer Forage Boxes to be free from defects in material and workmanship under recommended use and maintenance service, as stated in the Operator's and Parts Manual," as follows:
  - A. Meyer Mfg. Corp. will repair or replace F.O.B. Dorchester, WI, as Meyer Mfg. Corp. elects, any part of a new Meyer Forage Box which is defective in material or workmanship:
    1. Without charge for either parts or labor during the first (1) year from purchase date to the original retail customer.
    2. Without charge for parts only during the second (2) year from purchase date to the original retail customer.
  - B. In addition to the above basic warranty, Meyer Mfg. Corp. will repair or replace F.O. B. Dorchester, WI as Meyer Mfg. Corp. Elects:
    1. Any part of the following which is defective in material or workmanship (not neglect to recommended use and service) without charge for parts only (not labor) during the stated time periods from date of purchase to the original retail customer:

Two (2) Years: a. The 3100 and 4100 Series enclosed main apron drive Superior gearbox assembly, Meyer #19-0026 and #19-0126.

b. The D667X pintle main apron chain assembly.
    2. Any part of the following which is defective in material or workmanship (not neglect to recommended use and service) with a "pro-rated" charge for parts only (not labor) during the stated time period from date of purchase to the original retail customer:

Ten (10) Years: a. The all bolted or all welded steel frame box structure.


b. The aluminized steel or galvaneal steel painted panels which comprise the sides and rear of the box portion (not front unit) of the forage box, upon evidence satisfactory to Meyer Mfg. Corp., that any such panel either rusted or corroded through or cracked or split.


c. The pressure treated XL-10 industrial plywood floor, upon evidence satisfactory to Meyer Mfg. Corp., that the plywood either decayed or rotted or had insect damage or became delaminated. Does not include poly bonded floor – 2 year warranty (See III A)
- IV. COMMERCIAL USE: Coverage as in paragraph III A1 ONLY, except warranty coverage is for (90) days for parts and labor to the original commercial retail customer.
- V. Repairs eligible for labor warranty must be made by Meyer Mfg. Corp. or an authorized Meyer dealership. The original retail customer is responsible for the transportation of the forage box to the dealership for warranty service or for any service call expenses.
- VI. Except as stated above, Meyer Mfg. Corp. shall not be liable for injuries or damages of any kind or nature, direct, consequential, or contingent, to persons or property. This warranty does not extend to loss of crop or for any other reasons.
- VII. No person is authorized to give any other warranties or to assume any other obligation on Meyer Mfg. Corp.'s behalf unless made or assumed in writing by Meyer Mfg. Corp. This warranty is the sole and exclusive warranty which is applicable in connection with the manufacture and sale of this product and Meyer Mfg. Corp.'s responsibility is limited accordingly.
- VIII. This warranty is effective on all sales of Meyer Forage Boxes made after serial #QD95201.


\*\*Tires, optional scales and tarps fall under the original manufacturer's warranty\*\*

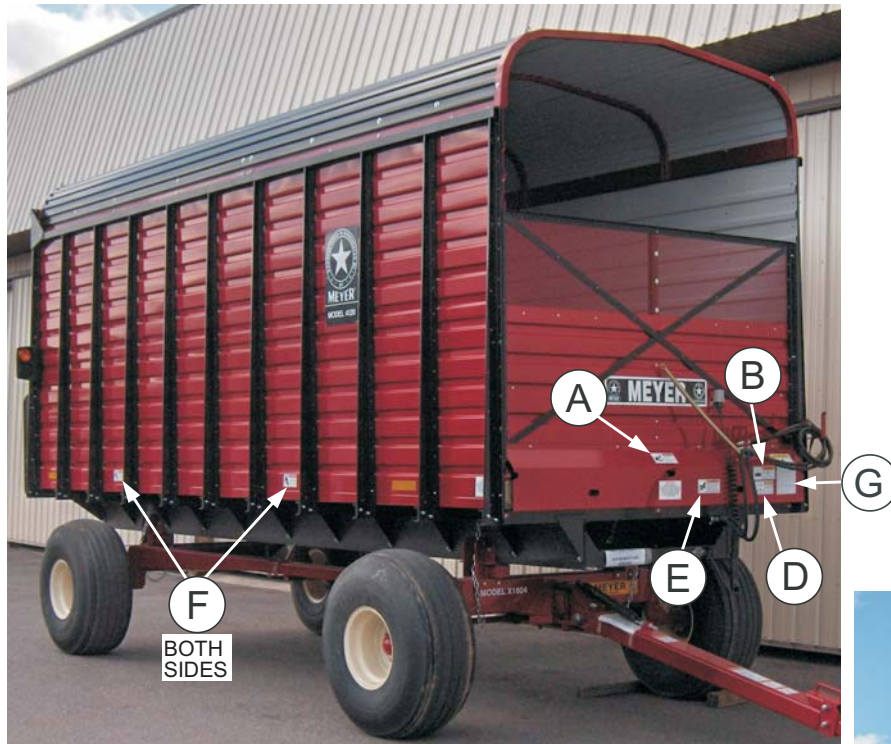
## SAFETY

A brief definition of signal words that are used in this manual as follows:

 **DANGER** indicates an imminently hazardous situation which, if not avoided, WILL result in death or serious injury.

 **WARNING** indicates a potentially hazardous situation which, if no avoided COULD result in death or serious injury and includes hazards that are exposed when guards are removed.

 **CAUTION** indicates a potentially hazardous situation which, if not avoided, MAY result in minor or moderate injury. It is also used to alert against unsafe practices.

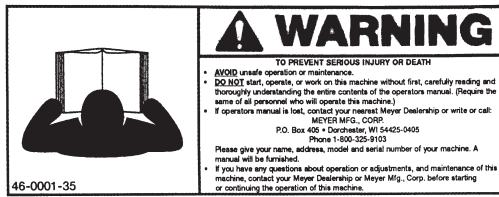


 **CAUTION: READ ALL DECALS ON THE FORAGE BOX AND IN THIS MANUAL. KEEP THESE DECALS CLEAN AND REPLACE ANY LOST OR DESTROYED DECALS. BECOME FAMILIAR WITH ALL TRACTOR AND DUMP BOX CONTROLS.**

# SAFETY DECALS



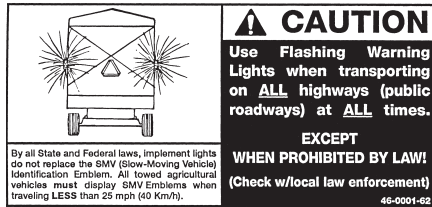
DECAL A.  
PART #46-0001-26



DECAL B.  
PART #46-0001-35



DECAL C.  
PART #46-0011-D



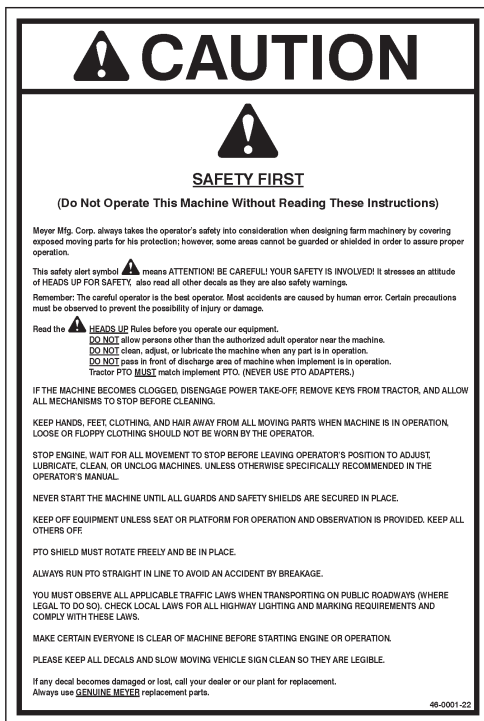
DECAL D.  
PART #46-0001-62



DECAL E.  
PART #46-8500-7



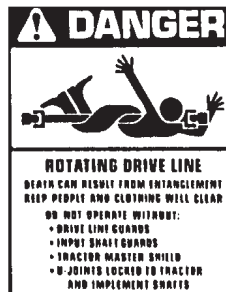
DECAL F.  
PART #46-0001-20



DECAL G.  
PART #46-0001-22



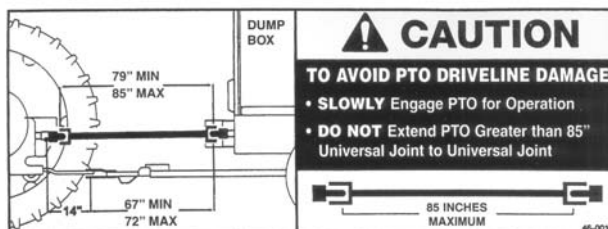
DECAL H. (PTO)  
PART #46-0001-4



DECAL I. (PTO ONLY)  
PART #918-0208-1-10



DECAL K. (PTO ONLY)  
PART #46-0001-33



DECAL J. (PTO ONLY)  
PART #46-0012

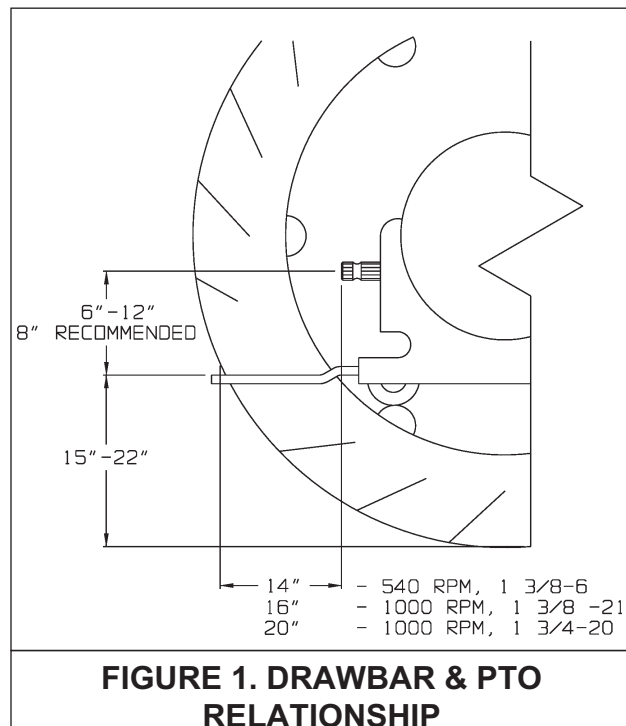
## PRE-OPERATION

Be sure your dump box is properly mounted to the running gear. Consult your dealer if you have any questions about the tie down kit from the manufacturer and illustrated in the parts listing of this manual.

This dump box is to be operated with 540 rpm PTO only. Set your tractor drawbar to conform to the standard dimensions shown on figure 1. This will ensure that the PTO drive shaft will not be over extended.

**! DANGER: DO NOT OPERATE WITHOUT PTO GUARD ON MACHINE AND ON TRACTOR. MAINTAIN PTO DRIVE SHAFT GUARD TUBES IN OPERATING CONDITION. REPLACE THEM IF DAMAGED AND NOT TURNING FREELY. FAILURE TO HEED MAY RESULT IN SERIOUS PERSONAL INJURY OR DEATH.**

**! WARNING: INSPECT REGULARLY THAT ALL CONNECTIONS AND BOLTS ARE TIGHT AND SECURE BEFORE OPERATING. FAILURE TO HEED MAY RESULT IN SERIOUS PERSONAL INJURY OR DEATH.**



Inspect all adjustments on the machine to be sure they are proper and to provide maximum performance. Lube the machine if it is required.

**! WARNING: DO NOT OPERATE WITHOUT ALL SHIELDS, GUARDS AND COVERS INSTALLED. FAILURE TO HEED MAY RESULT IN SERIOUS PERSONAL INJURY OR DEATH.**

Before operation and after hitching the tractor to the wagon, connect the PTO. Slowly engage the tractor PTO and operate box at idle speed to ensure it is operating properly.



**FIGURE 2. DUMP BOX**

## TRANSPORTING

**⚠ WARNING: DO NOT TOW AT SPEEDS GREATER THAN 20 MPH. FAILURE TO HEED MAY RESULT IN SERIOUS PERSONAL INJURY OR DEATH.**

Operating speed is dictated by the terrain over which you are traveling. Always use caution. Avoid traveling on slopes or hills that are unsafe.

Always disconnect the PTO drive shaft from the tractor and return it to its storage bracket on the front of the box for transporting, see figure 3. Failure to do this may result in equipment damage.

Your running gear probably has a telescoping tongue for convenience to hitch up. Always back up and lock this tongue in the operating position after hitching.

**⚠ WARNING: INSTALL A SMV EMBLEM ON REAR OF DUMP BOX FOR TRANSPORTING ON ROADWAYS AND KEEP THIS EMBLEM CLEAN. FAILURE TO HEED MAY RESULT IN SERIOUS PERSONAL INJURY OR DEATH.**

If you will travel on public roads and it is legal to do so, you must know all rules governing such operation. This will include lighting and brake requirements in addition to traffic rules. You may also be required to install a safety chain device on the running gear.

Check for traffic constantly. Be sure you can see that no one is attempting to pass you and that all traffic is sufficiently clear from you before making any turns.



**FIGURE 3. PTO STORAGE**

**⚠ WARNING: YOU MUST OBSERVE ALL APPLICABLE TRAFFIC LAWS WHEN TRANSPORTING ON PUBLIC ROADWAYS. CHECK LOCAL LAWS FOR ALL HIGHWAY LIGHTING AND MARKING REQUIREMENTS.**

Be sure and observe that the rear discharge door is latched closed before traveling on roadways.

# OPERATION

**⚠ WARNING: MAKE CERTAIN EVERYONE IS CLEAR OF EQUIPMENT BEFORE APPLYING POWER. FAILURE TO HEED MAY RESULT IN SERIOUS PERSONAL INJURY OR DEATH.**

Pull the dump box into position.

Always park as straight ahead as possible so there is a minimum angle on the PTO shaft U-joints when it is connected to the tractor. Set the brakes and shut the tractor off.

**NOTE:** Normal operation is using a tractor. If using some other vehicle exercise caution when parking and exiting this vehicle.

Remove drive shaft from the storage bracket and connect it to the tractor PTO. Be sure the PTO yoke is securely locked to the tractor PTO. If using an optional hydraulic drive, couple the hydraulic hoses to the power supply.

Make sure all persons are clear of the dump box and the unloading area.

The rear door, figure 4, is opened automatically as forage is forced against it. The door can spring open with extreme force when the latches release, figure 5. This is caused by the pressure of the forage against the door.

**⚠ WARNING: DISCHARGE DOOR CAN SPRING OPEN QUICKLY AND WITH FORCE. KEEP ALL PERSONS WELL CLEAR OF THE DUMP BOX AND UNLOADING AREA. FAILURE TO HEED MAY RESULT IN SERIOUS PERSONAL INJURY OR DEATH.**




**FIGURE 4. REAR OPENING DISCHARGE DOOR**




**FIGURE 5. DOOR LATCH  
(Typical both sides)**

Return to the tractor, restart, and slowly engage the PTO to start the apron chains and open the rear door. Once the door opens, regulate the discharge flow with the tractor PTO speed (or tractor hydraulic flow control for hydraulic driven). Do not operate above rated speed of 540 RPM.


 **WARNING: DO NOT STEP UP ON ANY PART OF THE DUMP BOX AT ANY TIME. FAILURE TO HEED MAY RESULT IN SERIOUS PERSONAL INJURY OR DEATH.**

Unloading is best observed from the tractor seat. If you are at ground level, the front of the box has a top section of expanded metal for convenient observation.


When finished unloading reduce speed to idle and disengage the PTO drive. Pull the dump box straight ahead to pull the door away from the unloaded pile of forage. When free gravity will allow the door to swing shut and the door latches will engage the apron chain links to secure it shut. Observe that this happens properly. Set the brakes and turn the tractor "OFF". When all movement has stopped, disconnect the PTO drive shaft from the tractor and return it to its storage bracket. Secure it with the rubber tie down strap.

 **WARNING: DO NOT STEP OVER THE POWER TAKE-OFF SHAFT. STAY CLEAR OF POWER TAKE-OFF SHAFT AT ALL TIMES. FAILURE TO HEED MAY RESULT IN SERIOUS PERSONAL INJURY OR DEATH.**

The unloading process described is to be accomplished by the operator alone. This will eliminate unexpected startups and minimize other hazards that can result by more than one person in control. If the dump box becomes clogged, shut off all power to the dump box. Wait for all motion to stop. Disconnect PTO shaft or hydraulic supply hoses. Then clean out machine. Never use power to aid clean out. If any mechanism fails, remove dump box to safe work area and repair the mechanism before proceeding with unloading.

 **DANGER: NEVER ENTER THE DUMP BOX WITHOUT FIRST DISCONNECTING PTO SHAFT FROM POWER SUPPLY OR DISCONNECTING OPTIONAL HYDRAULIC HOSES FROM POWER SUPPLY. FAILURE TO HEED MAY RESULT IN SERIOUS PERSONAL INJURY OR DEATH.**

Never enter the dump box for any reason if there is any possibility of power being applied to the unit.

 **WARNING: DISCONNECT PTO DRIVE SHAFT (OR OPTIONAL HYDRAULIC POWER SOURCE) BEFORE CLEANING, ADJUSTING, LUBRICATING OR SERVICING THIS MACHINE. FAILURE TO HEED MAY RESULT IN SERIOUS PERSONAL INJURY OR DEATH.**

Allow box to completely clean out the last load of forage. It is recommended to lube the dump box before storage to exclude moisture from bearings. Apply oil to roller chain drives and to the apron chains. It is also a good time to inspect all adjustments and check for parts that need repair or replacement. Performing these tasks now will guarantee that the box is ready for use at the beginning of the next season.

# ADJUSTMENTS

**⚠ WARNING: DISCONNECT PTO DRIVE SHAFT (OR OPTIONAL HYDRAULIC POWER SOURCE) BEFORE CLEANING, ADJUSTING, LUBRICATING OR SERVICING THIS MACHINE. FAILURE TO HEED MAY RESULT IN SERIOUS PERSONAL INJURY OR DEATH.**

## APRON CHAIN

Correct tension on the apron chains is when about three feet of chain does not touch the return slides at the rear of the box. To tighten chains, tighten the adjuster bolts at each end and center of the front sprocket shaft, see figure 6. Each apron chain has its own sprocket shaft. At the center cutout there is an adjuster bolt for each shaft. Tighten the adjuster bolts at each end of each shaft equally.

## ROLLER CHAIN DRIVES

The roller chain drives are tensioned by automatic spring loaded tension blocks.



**FIGURE 6. ADJUST APRON CHAINS**

# LUBRICATION

**WARNING:** DISCONNECT PTO DRIVE SHAFT (OR OPTIONAL HYDRAULIC POWER SOURCE) BEFORE CLEANING, ADJUSTING, LUBRICATING OR SERVICING THIS MACHINE. FAILURE TO HEED MAY RESULT IN SERIOUS PERSONAL INJURY OR DEATH.

(L1) Grease (2) PTO drive (not shown) shaft joints daily.

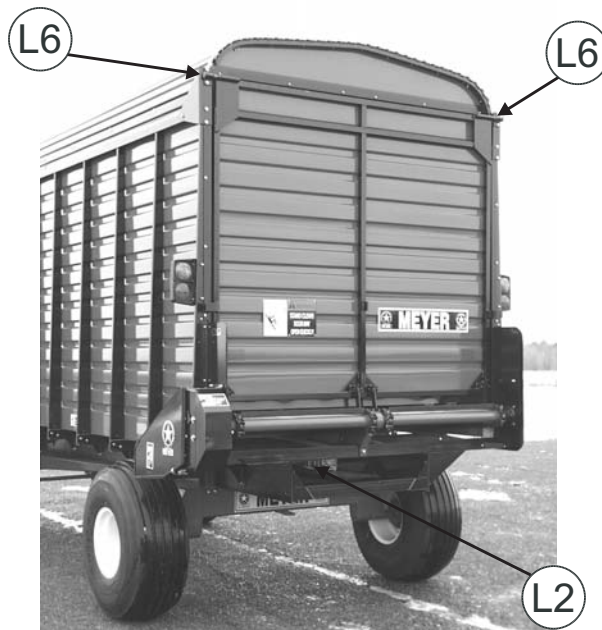
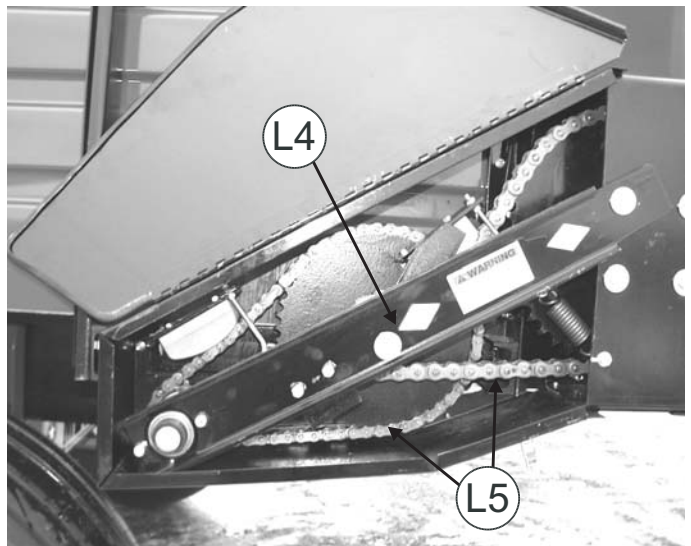
(L2) Maintain oil in gearbox to centerline of shafts. Use Multi purpose 80-90 transmission lube. Lighter oil may be used in temperatures lower than 20 degrees.

(L3) Grease the (3) main apron drive shaft bearings at rear, weekly.

(L4) Grease jack shaft at rear, weekly.

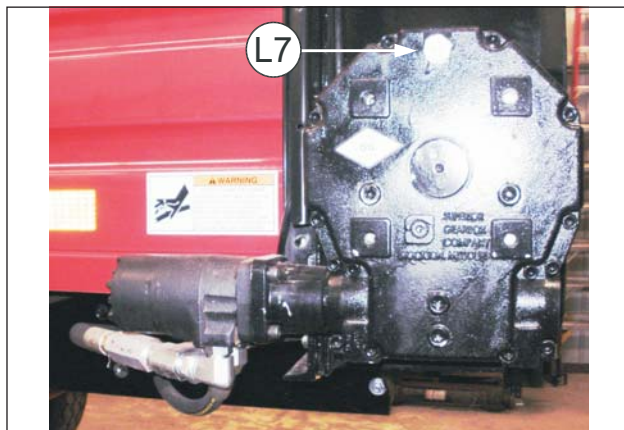
(L5) Use light machine oil periodically on the roller chain drives weekly. (PTO Drive)

(L6) Grease (2) door hinges annually.

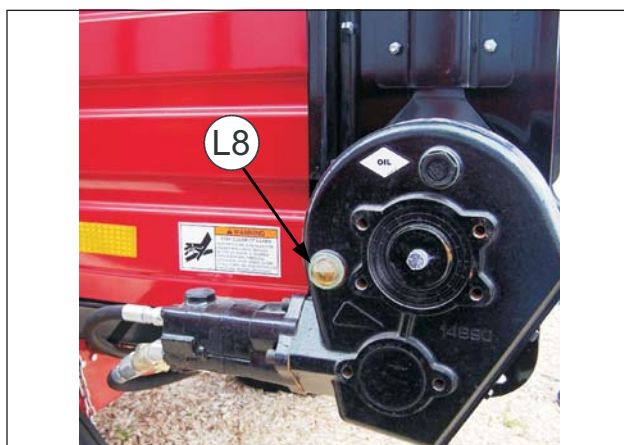


(L7) I-260/W-260--Maintain oil in the rear main apron drive gearbox at the check plug level. Change oil in the gearbox after the first season of use and yearly thereafter. Use #85W140 wt. Gear Lube Oil. Lighter oil may be used in temperatures below 20° F. See Figure 7.

(L8) RT250--Maintain the lube level visible in the apron drive gearbox sight glass. Check regularly for any observable leakage. If oil leakage is excessive, replace required input/output shaft oil seals. Use ONLY EP #80-90 wt. gear lube oil or an equivalent. A fill plug is provided. Change oil in the gearboxes after the first season of use and regularly thereafter. See Figure 8.



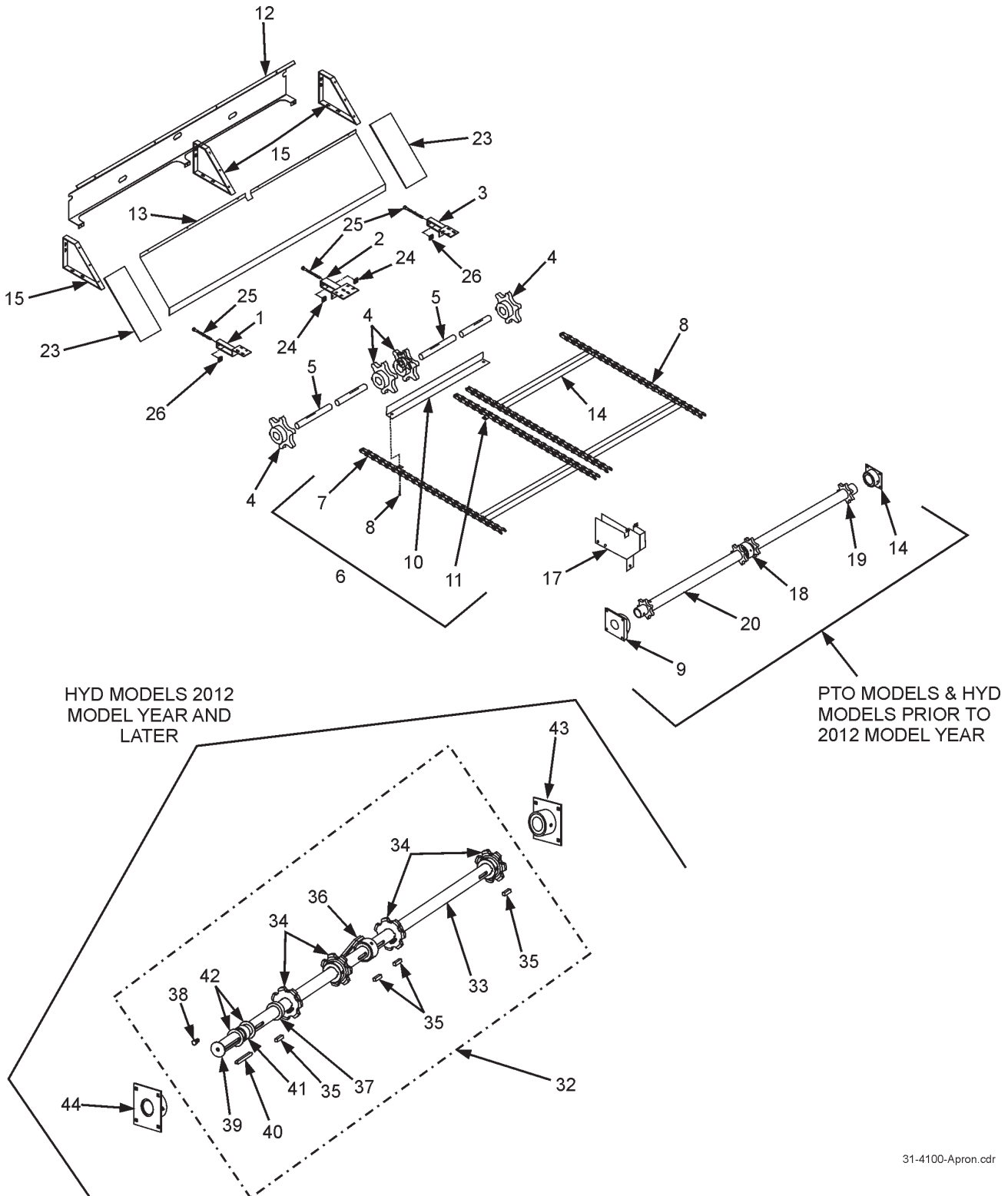
**FIGURE 7. HYDRAULIC DRIVE PRIOR TO 2012 MODEL YEAR**



**FIGURE 8. HYDRAULIC DRIVE 2012 MODEL YEAR AND LATER**

# REPAIR PARTS

## APRON - REAR UNLOAD QUICK DUMP

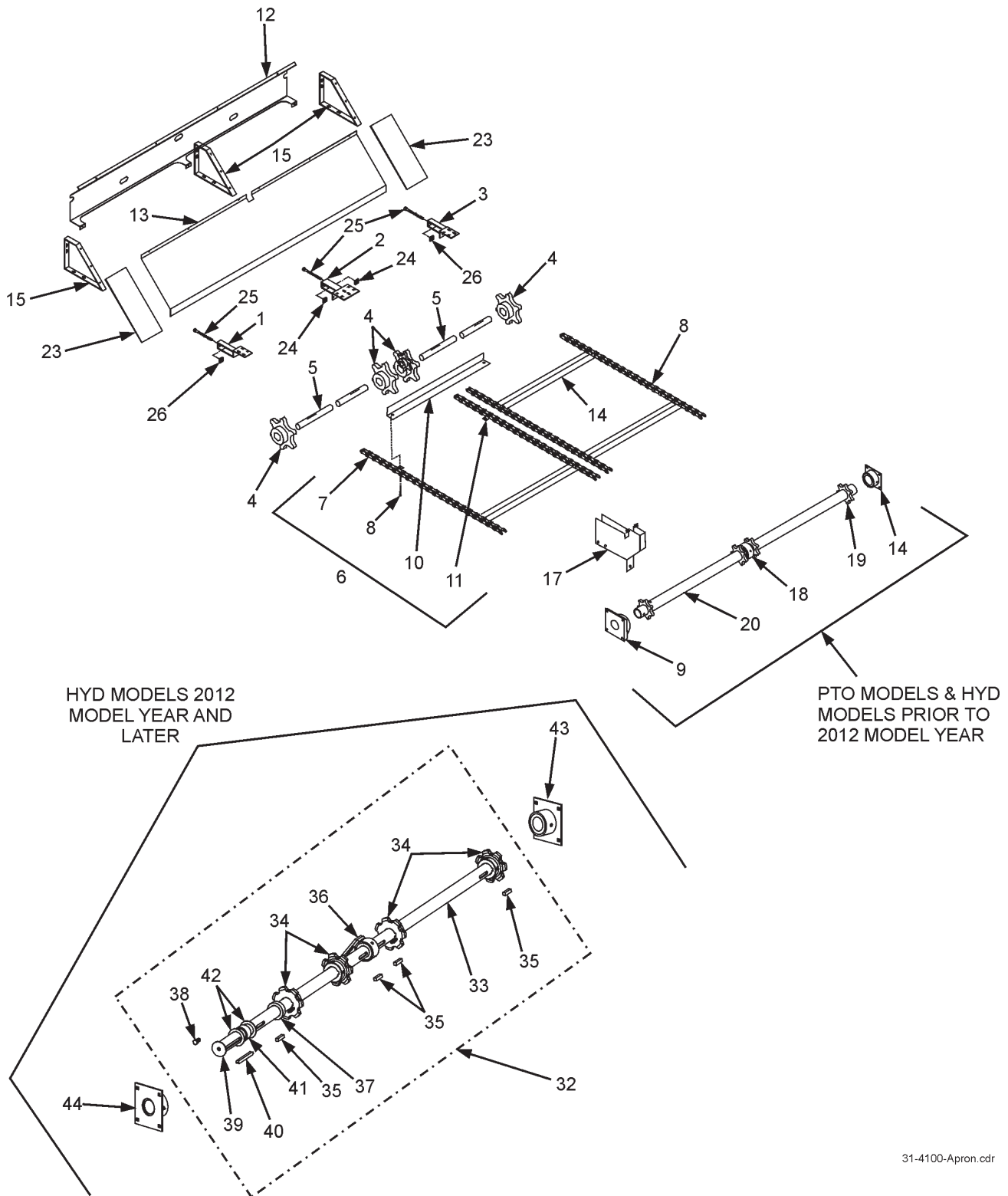


31-4100-Apron.cdr

## APRON - REAR UNLOAD QUICK DUMP

KEY	PART NO.	DESCRIPTION
1	25-0244	TIGHTENER BRACKET LH
2	25-0245	TIGHTENER BRACKET CENTER
3	25-0246	TIGHTENER BRACKET RH
4	10-0054	SPROCKET #67-6
	13-0015	BRONZE BUSHING
5	23-0043	IDLER SHAFT
6	11-0081	CHAIN ASSY 14' FLOOR, 667H
	11-0082	CHAIN ASSY 16' FLOOR, 667H
	11-0083	CHAIN ASSY 18' FLOOR, 667H
	11-0114	CHAIN ASSY 20' FLOOR, 667H
	11-0084	CHAIN ASSY 16' FLOOR, 667X
	11-0085	CHAIN ASSY 18' FLOOR, 667X
	11-0098	CHAIN ASSY 20' FLOOR, 667X
	11-0129	CHAIN ASSY 22' FLOOR, 667X
	11-0127	CHAIN ASSY 24' FLOOR, 667X
7	11-0068-3	PINTLE CHAIN LINK-D667H
	11-0008-1	PINTLE CHAIN LINK-D667X
7A	11-0068-4	PINTLE CHAIN PIN (667H)
	11-0008-8	PINTLE CHAIN PIN (667X)
8	11-0008-2	RIVET, 3/8X7/8
9	14-0009	MAIN ROLLER BEARING ASSY W/HOLE (ALL PTO MODELS & HYD MODELS - PRIOR TO QD12201)
	14-0043-1	BEARING (ALL PTO MODELS & HYD MODELS - PRIOR TO QD12201)
10	11-0080	SLAT
11	11-0068-2	D667H ATTACHMENT LINK W/PINS & COTTER KEYS
	11-0008-3	D667X ATTACHMENT LINK W/PINS & COTTER KEYS
12	24-0127	FRONT SHIELD
13	24-0090	DEFLECTOR SHIELD
14	14-0009-T	MAIN ROLLER BEARING ASSY W/O HOLE (ALL PTO MODELS & HYD MODELS - PRIOR TO QD12201)
	14-0043-1	BEARING (ALL PTO MODELS & HYD MODELS - PRIOR TO QD12201)
15	25-0141	BRKT, DEFLECTOR SHIELD SUPPORT
16	11-0008-4	CHAIN SLAT
	11-0068-1	W/ATTACHMENT LINKS - 667H
	11-0008-6	W/ATTACHMENT LINKS - 667X
17	25-0205	BEARING SUPPORT BRACKET
18	14-0035	MAIN DRIVE SHAFT REPLACEABLE SPLIT BEARING ASSY (ALL PTO MODELS & HYD MODELS - PRIOR TO QD12201)
	14-0035-1	BEARING SPLIT (ALL PTO MODELS & HYD MODELS - PRIOR TO QD12201)
19	23-0012-2	SPROCKET, MAIN ROLLER (ALL PTO MODELS & HYD MODELS - PRIOR TO QD12201)

# APRON - REAR UNLOAD QUICK DUMP (CONT'D)

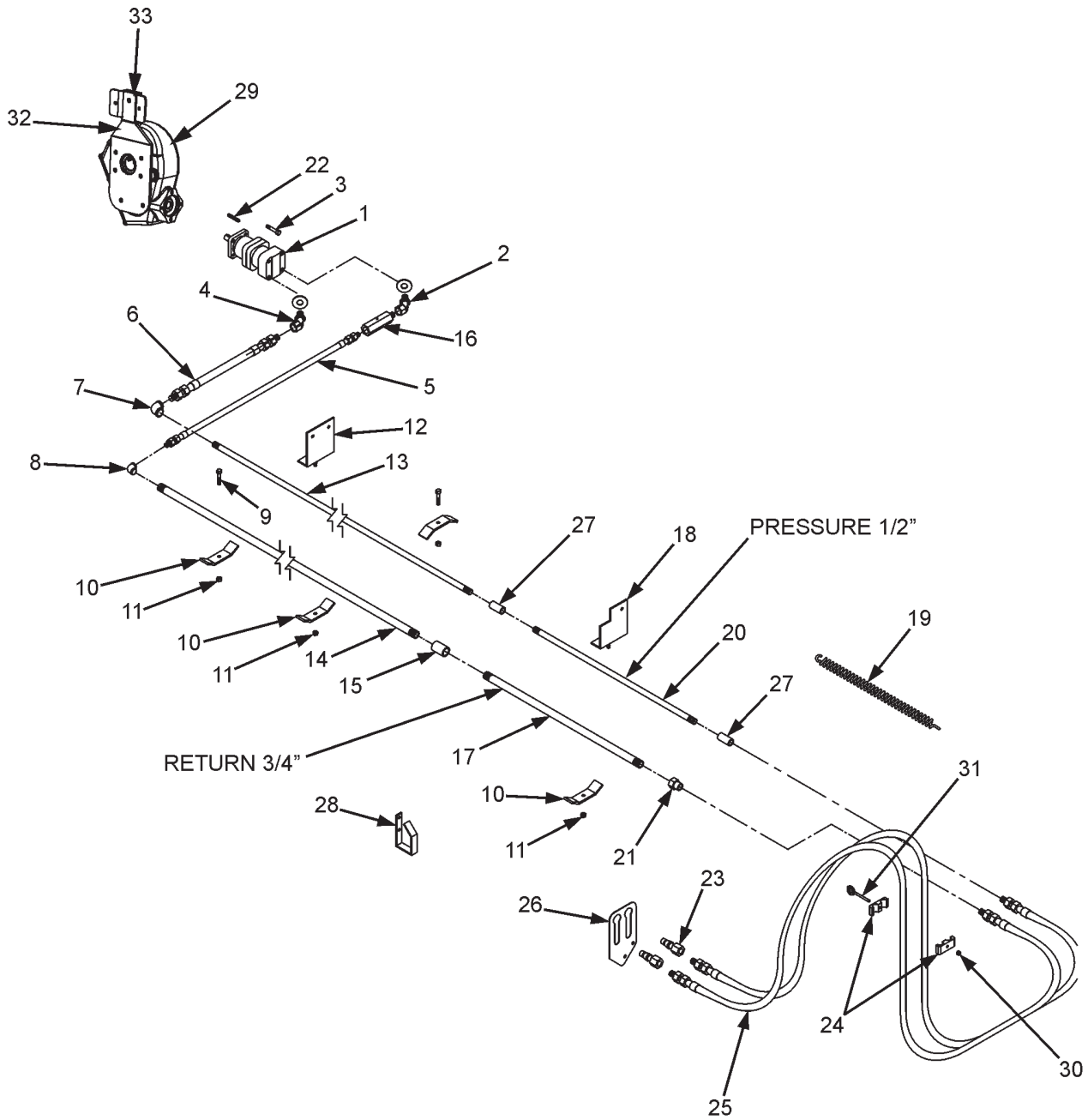


31-4100-Apron.cdr

## APRON - REAR UNLOAD QUICK DUMP

KEY	PART NO.	DESCRIPTION
20	23-0050	PRE '94 DUMP BOX MAIN ROLLER SHAFT W/67 SPROCKETS
	23-0049	PRE '94 DUMP DRIVE STUB SHAFT
	23-0076	MAIN ROLLER COMPLETE W/STUB SHAFT (1994 MODELS & LATER)
	23-0076-1	2002 DUMP DRIVE STUB SHAFT (1994 MODELS & LATER)
	23-0057	PRE '96 HYD MAIN ROLLER COMPLETE W/STUB SHAFT
	23-0057-1	PRE '96 HYD DUMP DRIVE STUB SHAFT
	23-0062	HYD MAIN ROLLER COMPLETE W/O STUB SHAFT (1996 MODELS THRU 2011 MODELS)
23	49-0006	FRONT DEFLECTOR SHIELD BELTING
24	25-0147	TIGHTENER NUT, CENTER
25	830-5013-7	TIGHTENER BOLT
26	25-0152	TIGHTENER NUT, OUTER
32	23-0161	HYD SOLID MAIN DRIVE SHAFT ASSEMBLY W/CNTR BRG, SPROCKETS, COLLAR, SPACER, KEYS & WASHERS (SN QD12201 & LATER)
33	23-0161-1	REAR MAIN DRIVE SHAFT
34	10-0094-F	FRONT MAIN DRIVE SPROCKET
35	35-0008	1/2"X1/2"X2" 1045 SQUARE KEY
36	14-0054	CENTER MAIN DRIVE BEARING ASSEMBLY
37	921-0008	2" ID STEEL COLLAR
38	851-5013-1Z	1"-13X1" BOLT
39	601-0001-65	DRIVE SHAFT CAP WASHER 10GA
40	135-5050-5-1	1/2"X1/2"X5" KEY ROUNDED
41	43-0025	DRIVE PLATE SPACER
42	808-2-3-10	2"IDX3"OD 10GA MACHINE BUSHING
43	14-0053	DRIVE SHAFT BEARING ASSEMBLY
	14-0053-2	2"X3"X1-15/16" BEARING ONLY
44	14-0056	DRIVE SHAFT BEARING ASSEMBLY W/THRU HOLE
	14-0053-2	2"X3"X1-15/16" BEARING ONLY

# 3100-4100 SERIES HYDRAULIC REAR UNLOAD COMPONENTS



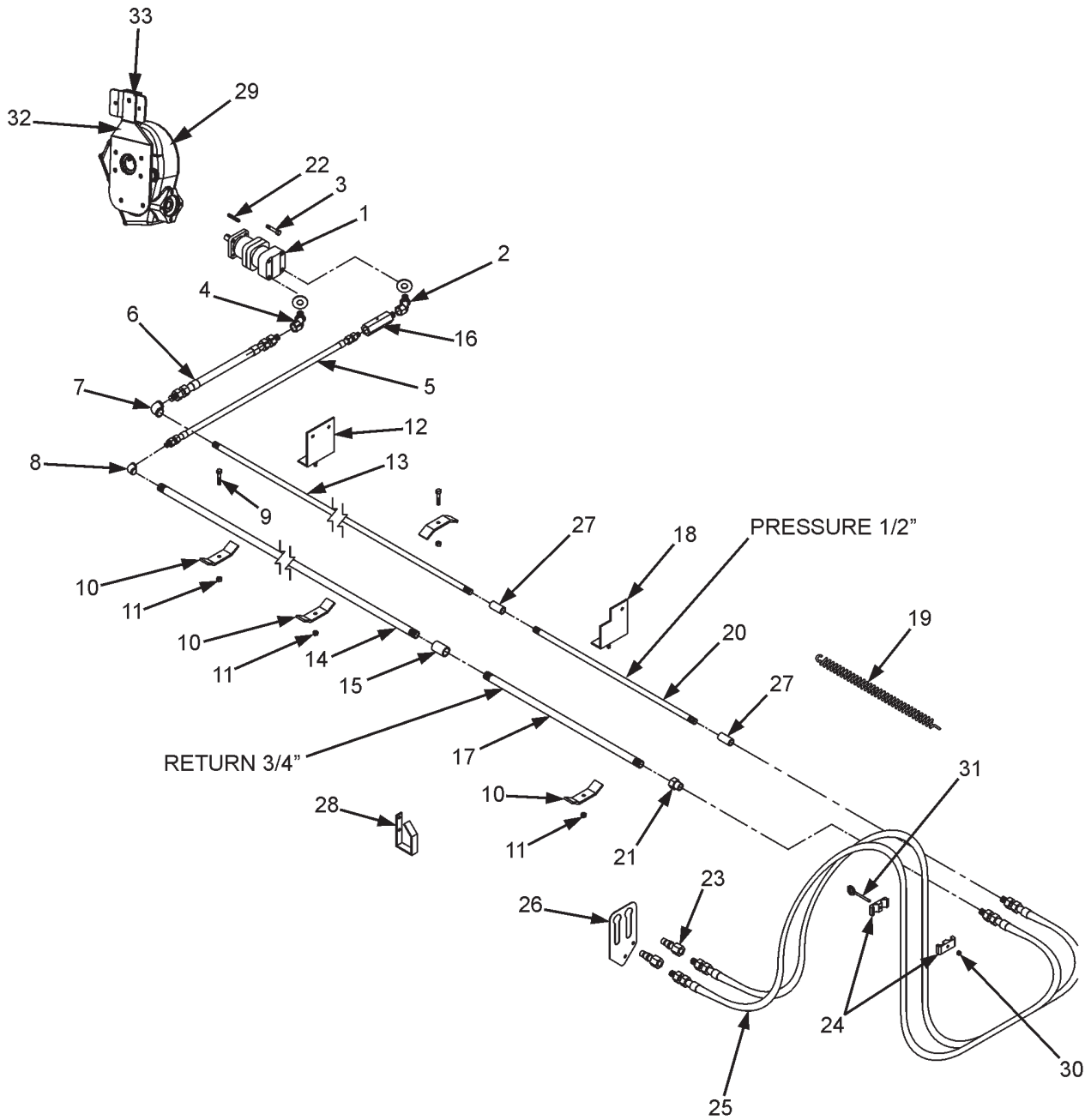
Truck Mounts: Pressure & Return Lines Are Both 3/4"

3100-4100-HydRearUnloadComponents.cdr

### 3100-4100 SERIES HYDRAULIC REAR UNLOAD COMPONENTS

KEY	PART NO.	QTY	DESCRIPTION
1	55-0099	1	HYDRAULIC MOTOR FOR 18' BOXES & UNDER (PRIOR TO SN QD12201)
	55-0099-HD	1	HYDRAULIC MOTOR FOR 20' BOXES & LONGER (PRIOR TO SN QD12201)
	155-2000-11.9-1	1	HYDRAULIC MOTOR (SN QD12201 AND LATER)
2	55-0083	1	3/4" 45 NPSM SWIVEL ORB
3	831-3816-1.25	4	3/8"-16X1-1/4" AHCS GR5
4	55-0059	1	1/2" 45 NPSM SWIVEL ORB (PRIOR TO SN QD12201)
	55-0085		1/2"STRAIGHT FITTING ORB (SN QD12201 AND LATER)
	55-0083		3/4" 45 NPSM SWIVEL ORB (TRUCK MOUNT MODELS)
5	55-0029	1	3/4" HOSE ASSEMBLY X 36" LONG
	55-0047	1	3/4" HOSE ASSEMBLY X 42" LONG
6	55-0028	1	1/2" HOSE ASSEMBLY X 36" LONG (PRIOR TO SN QD12201)
	55-0085	1	1/2" HOSE ASSEMBLY X 42" LONG (SN QD12201 & LATER)
	55-0047	1	3/4" HOSE ASSEMBLY X 42" LONG (TRUCK MOUNT MODELS)
7	55-0010	1	1/2" 90 BM ELBOW
8	55-0027	1	3/4" 90 BM ELBOW
9	851-3816-1.5Z	2	3/8"-16X1-1/2" GR 5 MB
10	25-0210-4	AR	HYD PIPE HOLDER CLAMP
11	815-3816-Z	4	3/8"-16 NYLON INSERT LOCK NUT
12	25-0210-5	2	BOX HYD PIPE HOLDER
13	55-0063	1	14' FLOOR 1/2"X159" HYD PIPE
	55-0025	1	16' FLOOR 1/2"X183" HYD PIPE
	55-0023	1	18' FLOOR 1/2"X207" HYD PIPE
	55-0021	1	20' FLOOR & LONGER 1/2"X231" HYD PIPE
14	55-0062	1	14' FLOOR 3/4"X161" HYD PIPE
	55-0024	1	16' FLOOR 3/4"X185" HYD PIPE
	55-0022	1	18' FLOOR 3/4"X209" HYD PIPE
	55-0020	1	20' FLOOR & LONGER 3/4"X233" HYD PIPE
15	55-0030		3/4" BM COUPLER FOR 22' & LONGER
16	55-0007-B	1	3/4" CHECK VALVE
17	55-0073	1	22' FLOOR 3/4"X24" EXT PIPE
	55-0070	2	24' FLOOR 3/4"X48" TRUCK MT EXT PIPE
18	25-0210-2	1	UNIT HYD PIPE HOLDER
19	29-0012	1	SPRING
20	55-0074	1	22' FLOOR 1/2"X24" EXT PIPE
21	55-0039	1	1/2"X3/4" FEMALE REDUCER
22	35-0021	1	1/4"X1/4"X1-3/4" KEY SQUARE
23	55-0013	2	PIONEER COUPLER
24	55-0033	1	CLAMP ASSEMBLY
25	55-0034	2	1/2" 2-WIRE X120" MALE HOSE ASSY
26	25-0249-1	1	HYD HOSE HOLDER BRACKET
27	55-0006	2	1/2" BM COUPLING
28	25-0209	1	HOLDER FOR HYD HOSE ENDS

# 3100-4100 SERIES HYDRAULIC REAR UNLOAD COMPONENTS (CONT'D)

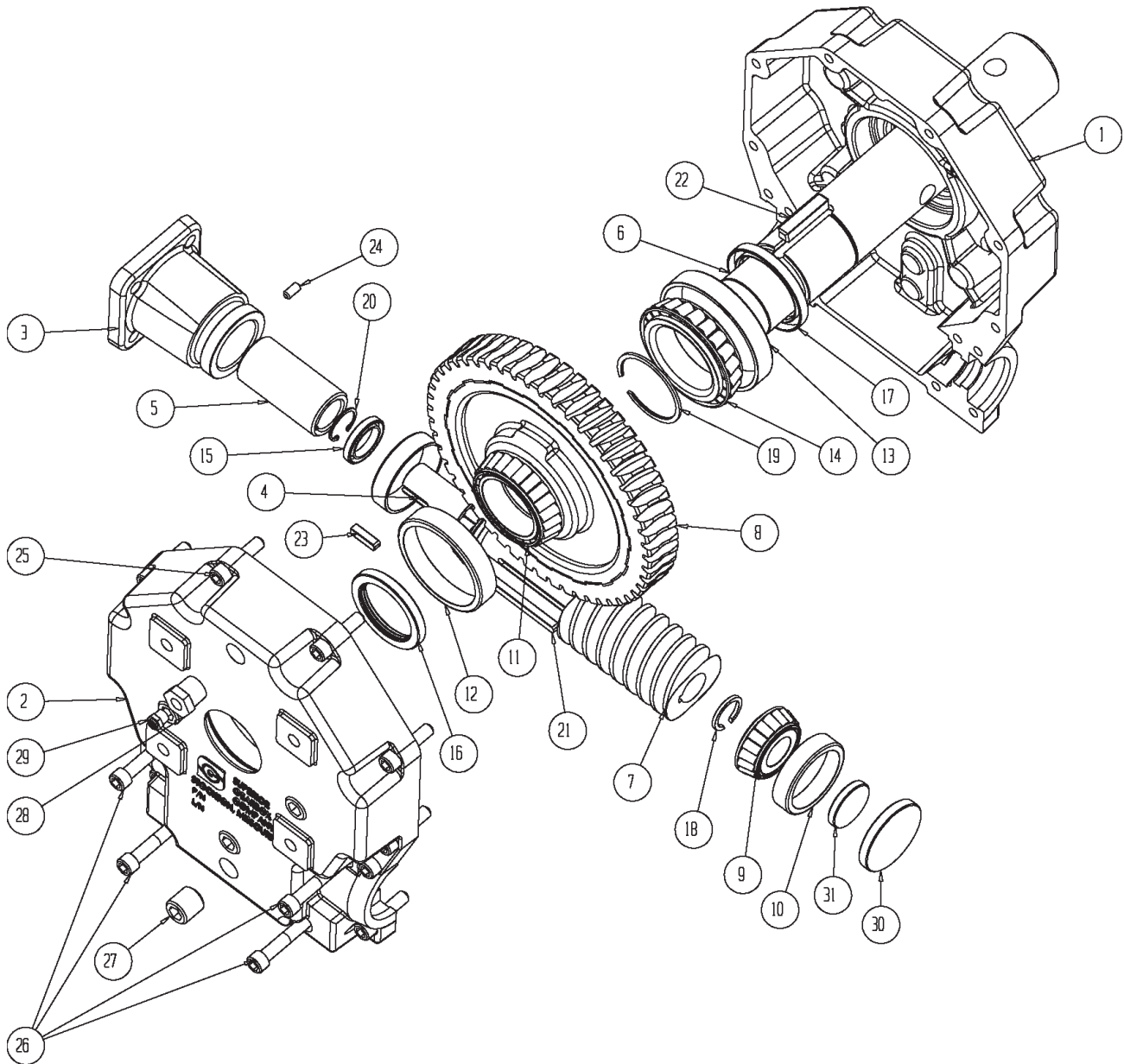


3100-4100-HydRearUnloadComponents.cdr

### 3100-4100 SERIES HYDRAULIC REAR UNLOAD COMPONENTS

KEY	PART NO.	QTY	DESCRIPTION
29	19-0026	1	W-260 GEARBOX W/OUTPUT SHAFT(PRIOR TO SN QD08201, AND SN QD10208 AND LATER)(HYD MODELS PRIOR TO SN QD08201, AND SN QD10208 THRU QD12201)
	19-0126	1	I-260 GEARBOX W/O OUTPUT SHAFT (SN QD08201 THRU QD10207)
	19-0126-8	1	I-260 OUTPUT SHAFT (SN QD08201 THRU QD10207)
	19-0201	1	RT250 GEARBOX (SN QD12201 AND LATER)
30	810-3118-Z	1	5/16" SPIN LOCK NUT
31	811-3118-2Z	1	5/16" EYEBOLT
32	100-9990-195	1	RT250 GEARBOX TORQUE ARM
33	25-0416	1	TORQUE ARM HOLDOWN BRACKET

**19-0026 HYDRAULIC REAR GEARBOX**  
**3100 & 4100 SERIES**  
**(USED PRIOR TO SERIAL NUMBER QD08201, AND SERIAL NUMBER QD10208**  
**THRU 2011 MODEL YEAR)**

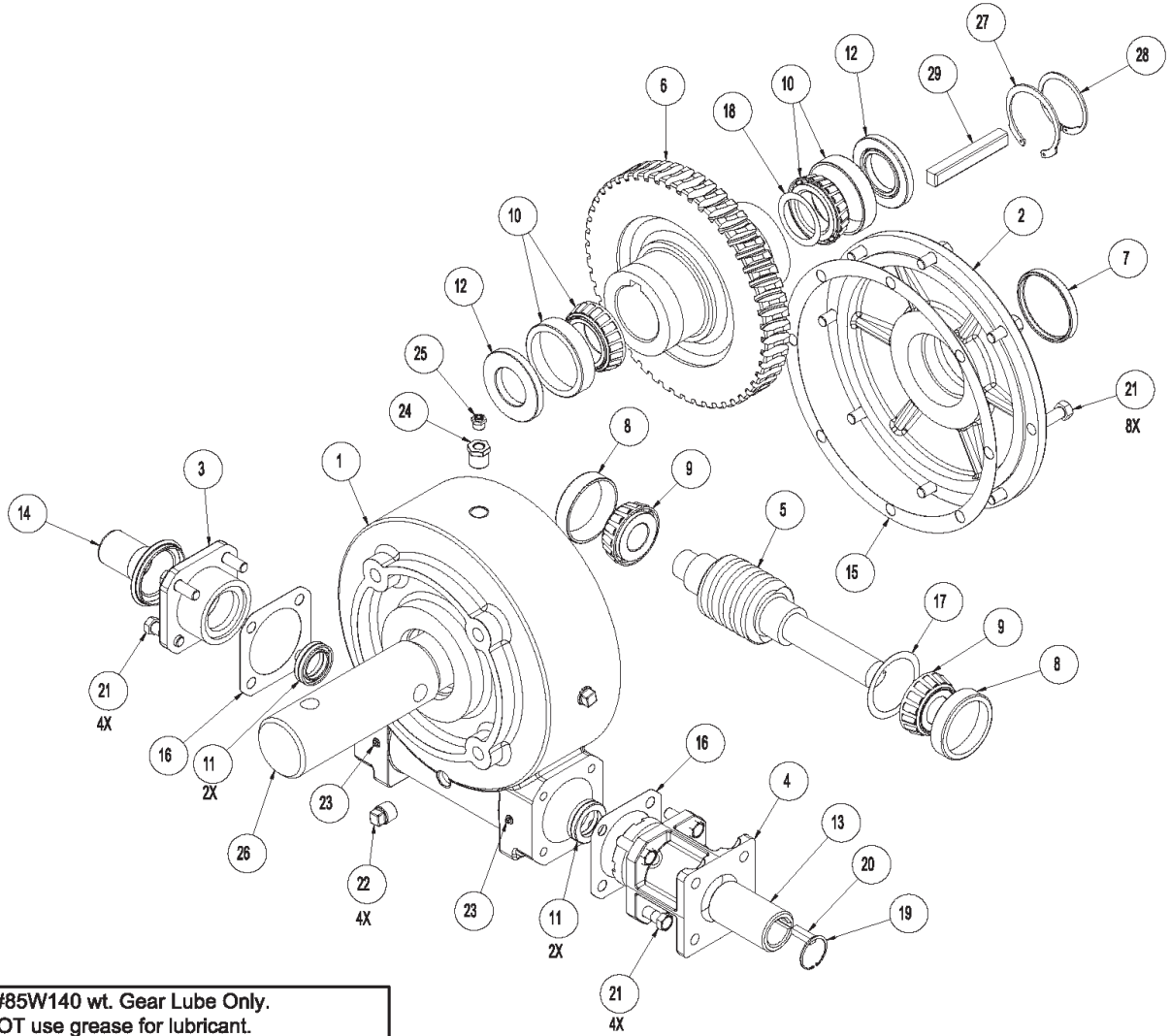


USE #85W140 Gear Lube Only.  
DO NOT use grease for lubricant.

**19-0026 HYDRAULIC REAR GEARBOX  
3100 & 4100 SERIES  
(USED PRIOR TO SERIAL NUMBER QD08201, AND SERIAL NUMBER QD10208 THRU  
2011 MODEL YEAR)**

KEY	PART NO.	QTY	DESCRIPTION
1	19-0026-3	1	CASTING, TAPPED HOLES W260
2	19-0026-4	1	CASTING, THRU HOLES W260
3	19-0025-2	1	ADAPTER, HYD 4-BOLT
4	19-0026-2	1	INPUT SHAFT W260
5	19-0025-3	1	HYDRAULIC SLEEVE COUPLER
6	19-0026-1	1	OUTPUT SHAFT
7	19-0025-7	1	WORM 2 LEAD RH
8	19-0025-8	1	WORM GEAR RH 25:1
9	19-0002-3	2	BEARING CONE 1" I.D.
10	19-0002-4	2	BEARING CUP
11	19-0004-7	1	BEARING CONE 2" I.D.
12	19-0024-8	1	BEARING CUP
13	19-0024-23	1	BEARING CUP
14	19-0024-24	1	BEARING CONE 2.25" I.D.
15	19-0024-12	1	SEAL 1" SHAFT
16	19-0024-13	1	SEAL 2" SHAFT
17	19-0024-22	1	SEAL 2.25" SHAFT
18	19-0024-11	1	RETAINING RING 1" SHAFT
19	19-0024-25	1	RETAINING RING 2.25" SHAFT
20	19-0025-4	1	RETAINING RING 1" BORE
21	19-0024-14	1	KEY 1/4X1/4X2.73"
22	19-0024-15	1	KEY 3/8X3/8X1.80"
23	19-0025-6	1	KEY 1/4X1/4X1.46" HEAT TREATED
24	827-2528-.5	1	SET SCREW 1/4-28X.5
25	19-0024-20	10	SH CAP SCREW 3/8X1-1/2"
26	19-0016-11	4	SH CAP SCREW 3/8X2.25"
27	19-0016-5	9	DRAIN PLUG 1/2"-14 NPT
28	19-0023-2	8	BUSHING, 1/2 NPT TO 1/8 NPT
29	19-0002-17	1	VENT 5PSI
30	19-0024-19	1	SEAL, END PLUG - INPUT SHAFT
31	19-0024-28	1	SEAL, END CAP RUBBER COVER

**19-0126 REAR GEARBOX  
3100 & 4100 SERIES  
(USED SN QD08201 THRU QD10207)**

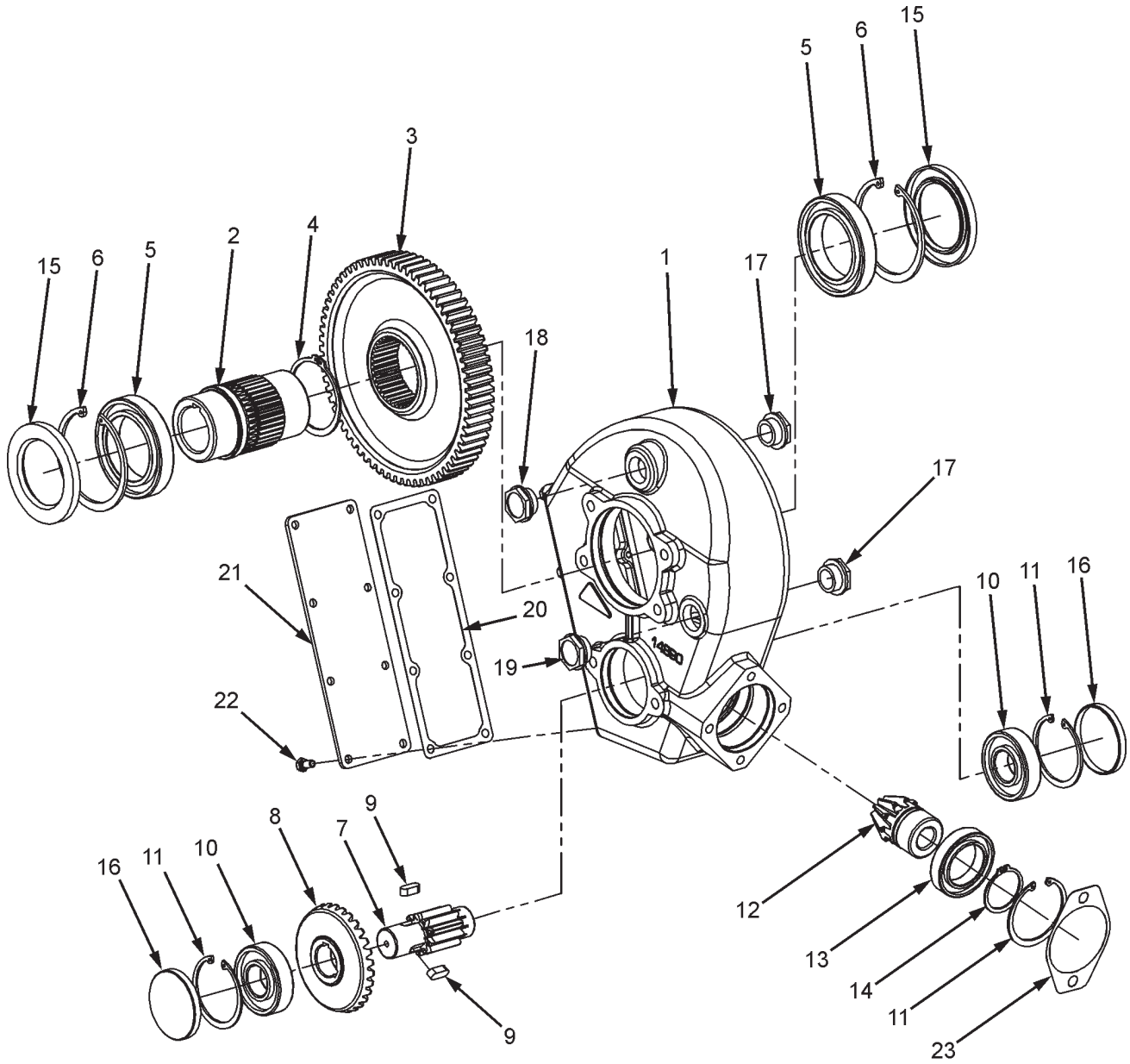


**USE #85W140 wt. Gear Lube Only.  
DO NOT use grease for lubricant.**

**#19-0126 REAR GEARBOX  
3100 & 4100 SERIES  
(USED SN QD08201 THRU QD10207)**

KEY	PART NO.	QTY.	DESCRIPTION
0	19-0126	1	I-260 REAR GEARBOX W/O OUTPUT SHAFT
1	19-0157-1	1	HOUSING
2	19-0157-2	1	COVER
3	19-0126-1	1	ENDCAP
4	19-0126-2	1	HYDRAULIC ADAPTER
5	19-0126-3	1	INPUT SHAFT / WORM ASSY.
6	19-0157-6	1	GEAR
7	19-0157-7	1	COVER CAP
8	19-0157-8	2	INPUT BEARING CUP
9	19-0157-9	2	INPUT BEARING CONE
10	19-0157-10	2	OUTPUT BEARING CUP/CONE
11	19-0057-13	4	INPUT SHAFT SEAL
12	19-0157-11	2	OUTPUT SEAL
13	19-0126-4	1	COUPLER
14	19-0126-5	1	SHAFT GUARD
15	19-0157-12	1	COVER GASKET
16	19-0157-13	2	ENDCAP GASKET
17	19-0057-19	AR	INPUT SHIM
18	19-0157-14	AR	OUTPUT SHIM
19	19-0126-6	1	RETAINING RING
20	19-0126-7	1	KEY
21	851-3816-1Z	16	3/8-16X1" MACHINE BOLT GRADE 5
22	19-0057-22	4	PLUG, 3/8-18 NPT
23	19-0157-15	2	PLUG, 1/8-27 NPT
24	19-0057-23	1	BUSHING 3/8-18/1/8-27
25	19-0057-24	1	PLUG, 5PSI BREATHER
26	19-0126-8	1	OUTPUT SHAFT
27	19-0157-16	1	OUTPUT SHAFT RETAINING RING
28	19-0157-17	1	HOLLOW BORE RETAINING RING
29	19-0126-9	1	KEY

**19-0201 REAR GEARBOX  
3100 & 4100 SERIES  
(USED SN QD12201 & LATER)**



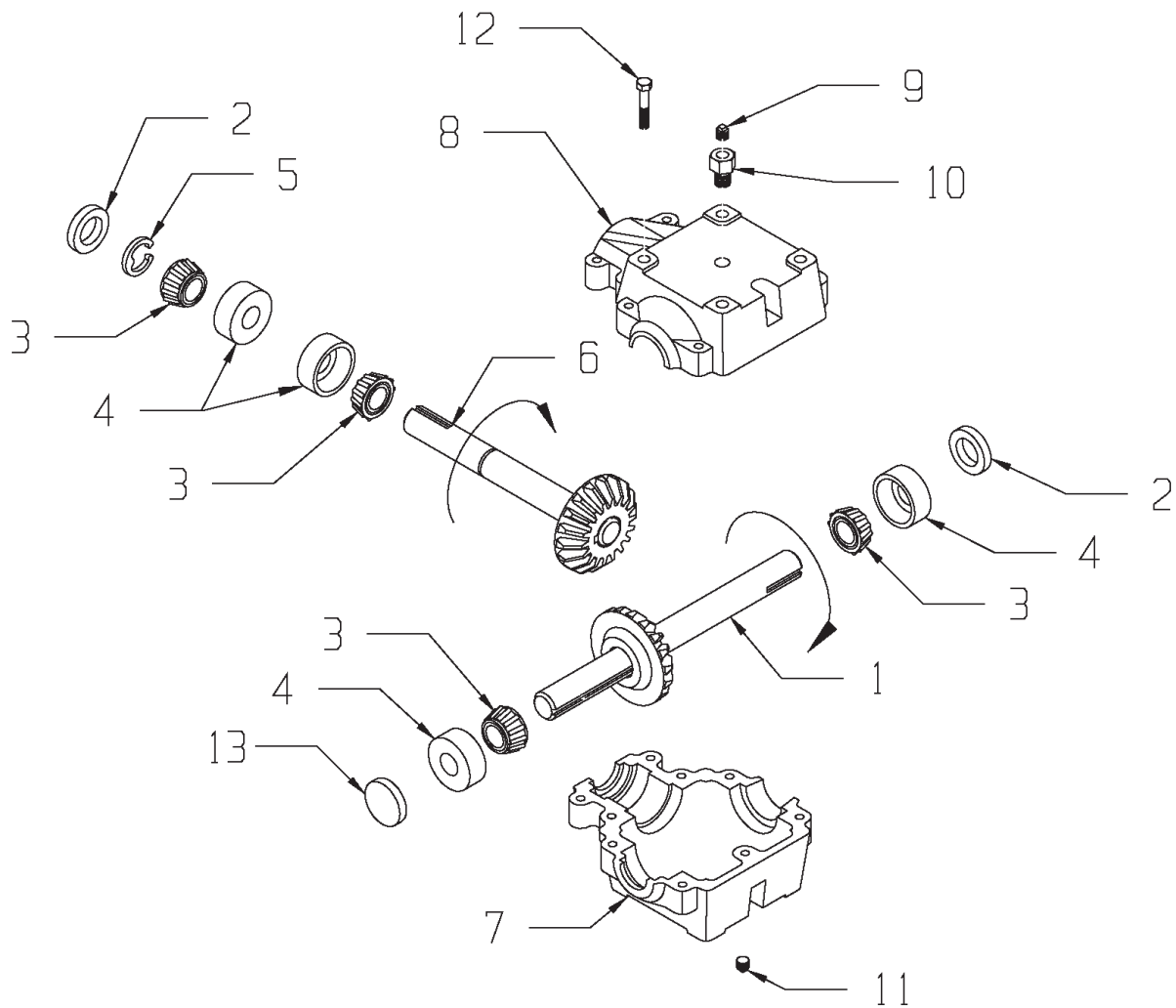
USE ONLY EP 80-90 WT GEAR LUBE OIL

31-4100-RearGearbox.cdr

**19-0201 REAR GEARBOX  
3100 & 4100 SERIES  
(USED SN QD12201 & LATER)**

KEY	PART NO.	QTY.	DESCRIPTION
1	19-0201-1	1	HOUSING
2	19-0201-2	1	HUB 2"
3	19-0201-3	1	GEAR
4	19-0201-4	1	SNAP RING
5	19-0201-5	2	BEARING
6	19-0201-6	2	SNAP RING
7	19-0201-7	1	PINION
8	19-0201-8	1	GEAR
9	19-0201-9	2	KEY
10	619-0001-15	2	BEARING
11	619-0001-16	3	SNAP RING
12	19-0201-10	1	PINION
13	619-0001-18	1	BEARING
14	619-0001-19	1	SNAP RING
15	19-0201-11	2	OIL SEAL
16	619-0001-22	2	CAP PLUG
17	19-0201-12	2	FILL PLUG
18	619-0001-20	1	FILL PLUG
19	619-0001-21	1	SIGHT PLUG
20	19-0201-13	1	GASKET
21	19-0201-14	1	COVER
22	619-0001-27	8	M8X16 HEX HEAD SCREW
23	19-0201-15	1	GASKET

**19-0044**  
**1:1 RATIO GEARBOX**



Use 80W90 Gear Lube Oil **ONLY**. **DO NOT USE GREASE** FOR LUBRICANT.



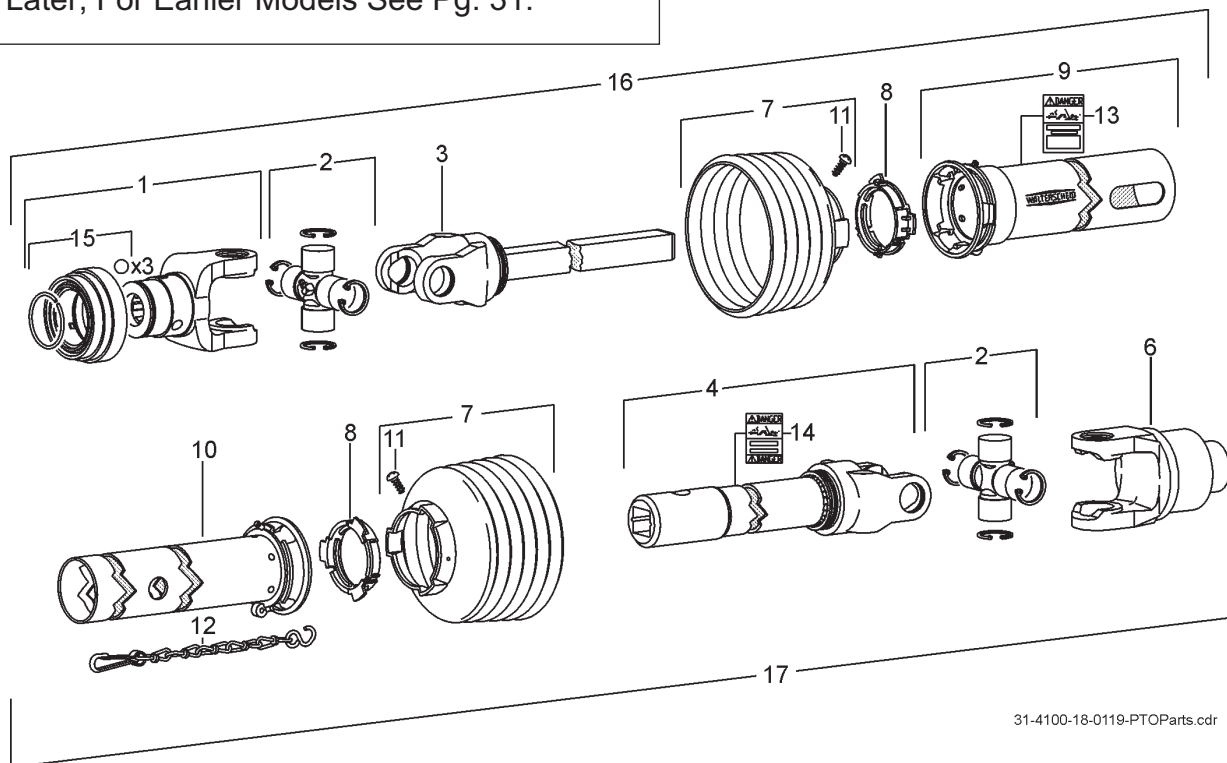
**CAUTION: VERIFY CORRECT DRIVE ROTATION BEFORE OPERATING. FAILURE TO DO SO MAY RESULT IN SEVERE EQUIPMENT DAMAGE.**

**19-0044**  
**1:1 RATIO GEARBOX**

<b>KEY</b>	<b>PART NO</b>	<b>DESCRIPTION</b>
0	19-0044	1:1 RATIO RIGHT ANGLE GEARBOX
	80W90	GEAR LUBE OIL - 28 OZ.
1	19-0044-2	SHAFT/GEAR ASSEMBLY
2	19-0018-2	SEAL
3	19-0018-3	BEARING CONE
4	19-0016-3	BEARING CUP
5	19-0018-4	RETAINING RING
6	19-0044-1	SHAFT/GEAR ASSEMBLY
7	19-0043-1	GEARBOX CASTING (TAPPED HOLES)
8	19-0041-2	GEARBOX CASTING (THRU HOLES)
9	19-0002-17	VENT PLUG, 5 PSI
10	19-0023-2	BUSHING, 1/2"-14 NPT
11	19-0016-5	PLUG, 1/2"-14 NPT
12	19-0024-20	BOLT, 3/8-16 X 1.50 SHCS
13	19-0041-3	GEARBOX END CAP

## 18-0119 UNIVERSAL JOINT TELESCOPING ASSEMBLY

Walterscheid PTO used on SN QD05201 and Later, For Earlier Models See Pg. 31.

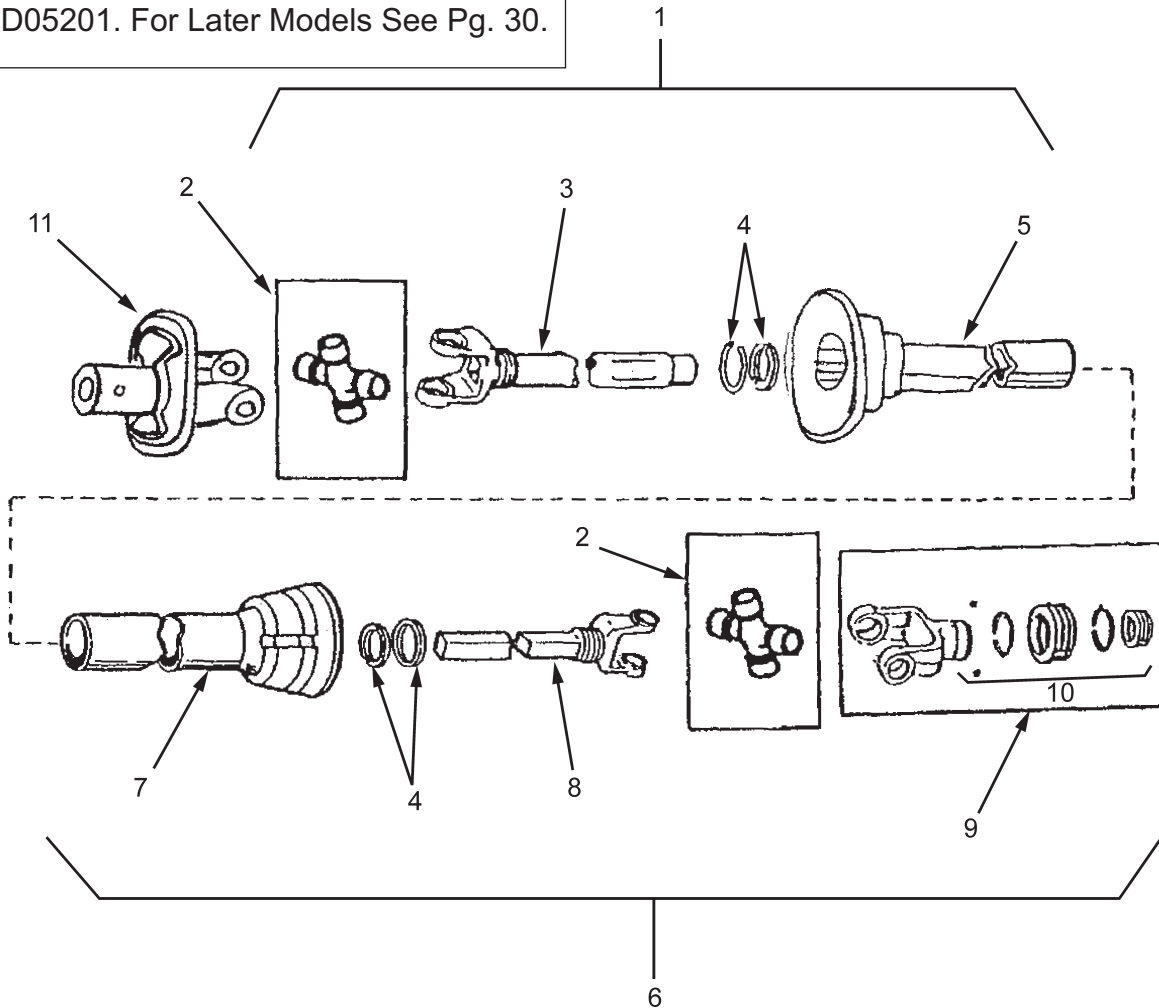


31-4100-18-0119-PTOParts.cdr

KEY	PART NO	QTY.	DESCRIPTION
	18-0119	1	PTO ASSEMBLY COMPLETE
1	18-0117-1-1	1	1 3/8-6 SPLINE YOKE ASGE
2	18-0117-1-2	2	CROSS AND BEARING KIT
3	18-0117-1-3	1	INBOARD YOKE AND BAR WELDED ASSY.
4	18-0117-2-1	1	INBOARD YOKE, TUBE AND SLEEVE WELDED ASSY.
6	18-0119-1-1	1	OVERRUNNING CLUTCH ASSEMBLY
7	18-0117-1-4	2	SHIELD CONE 5-RIB
8	918-0208-2-4	2	BEARING RING SC25
9	18-0117-1-6	1	OUTER SHIELD TUBE OVAL
10	18-0117-2-3	1	INNER SHIELD TUBE ROUND
11	918-0208-2-9	2	SCREW-INCLUDED IN ITEM #7
12	918-0208-2-7	1	SAFETY CHAIN
13	918-0208-2-8	1	DECAL OUTER-INCLUDED IN ITEM #9
14	918-0208-1-10	1	DECAL INNER-INCLUDED IN ITEM #4
15	18-0117-1-1-1	1	ASGE COLLAR KIT-INCLUDED IN ITEM #1
16	18-0117-1	1	TRACTOR MALE HALF COMPLETE
17	18-0119-1	1	IMPLEMENT FEMALE HALF SHAFT COMPLETE

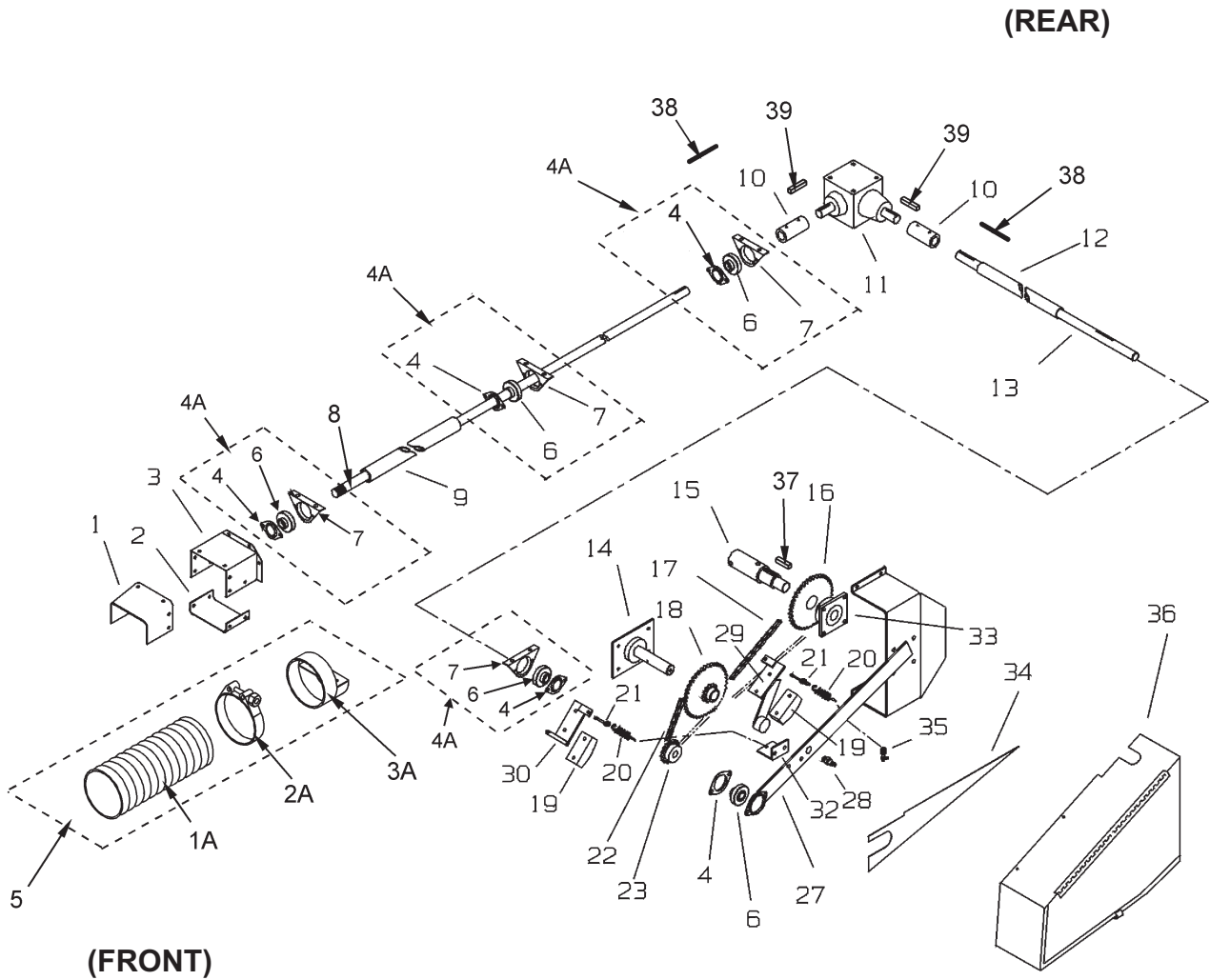
## 18-0019 12R UNIVERSAL JOINT TELESCOPING ASSEMBLY W/GUARD

Weasler PTO used Prior To SN QD05201. For Later Models See Pg. 30.



KEY	PART NO.	QTY.	DESCRIPTION
	18-0019	1	JOINT ASSEMBLY 12R UNIVERSAL #222-19688
1	18-0019-4	1	JOINT & TUBE HALF W/GUARD (IMPLEMENT HALF)
2	18-0017-9	2	12R CROSS & BEARING KIT
3	18-0017-6	1	YOKE, TUBE & SLIP SLEEVE
4	18-0017-10	2	NYLON REPAIR KIT
5	18-0019-12	1	INNER GUARD W/BEARING & RETAINER
6	18-0017-1	1	JOINT & SHAFT HALF W/GUARD (TRACTOR HALF)
7	18-0017-11	1	OUTER GUARD W/BEARING AND RETAINER
8	18-0017-3	1	YOKE & SHAFT
9	18-0017-7	1	SPRING - LOCK YOKE ASSEMBLY
10	18-0005-16	1	SPRING - LOCK REPAIR KIT
11	18-0019-13	1	YOKE, 1-1/4" BORE, 1/4"KWY, W/RP HOLE

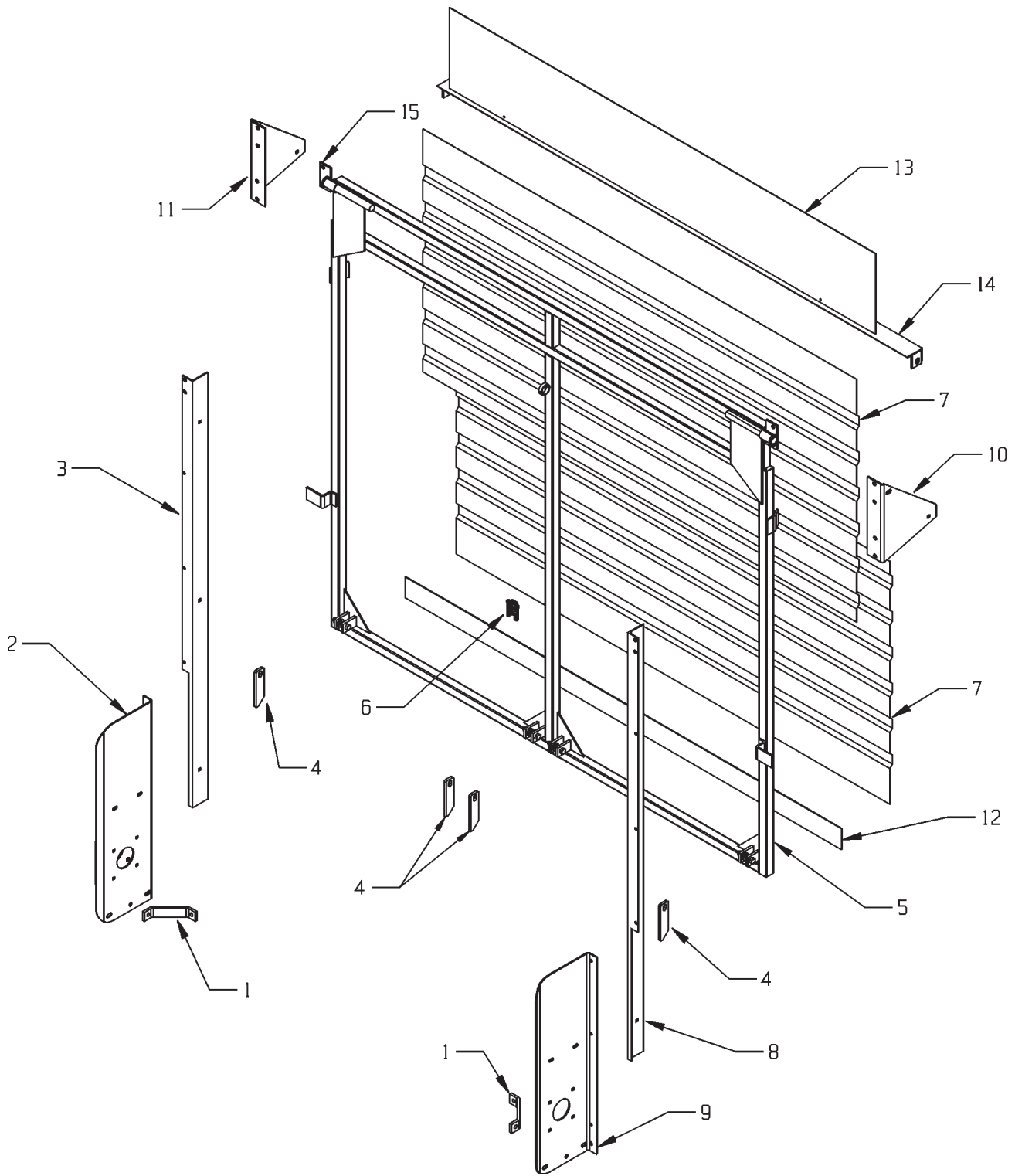
# DRIVE TRAIN QUICK DUMP REAR UNLOAD



**DRIVE TRAIN  
QUICK DUMP REAR UNLOAD**

KEY	PART NO.	DESCRIPTION	KEY	PART NO.	DESCRIPTION
1	24-0113-2	PTO BELTING 8"X24-1/2" 2001 (PRIOR TO 2002 SERIAL NUMBERS)	8 (CONT'D)	23-0055	94-'00 20' MAIN DRIVE SHAFT 214-3/4"
1A	49-0032	6" HOSE (2002 SERIAL NUMBERS AND LATER)		23-0074	2001 20' MAIN DRIVE SHAFT 218-1/2"
2	24-0113-1	PTO BELTING 3-1/2"X11" 2001 (PRIOR TO 2002 SERIAL NUMBERS)		23-0058	94-'00 22' MAIN DRIVE SHAFT 238-3/4"
2A	32-0025	HOSE CLAMP (2002 SERIAL NUMBERS AND LATER)		23-0039	22' MAIN DRIVE SHAFT EXTENSION 48"
3	24-0105-1	PTO SHIELD ASSEMBLY (PRIOR TO 2002 SERIAL NUMBERS)		23-0038	24' MAIN DRIVE SHAFT EXTENSION 96"
3A	24-0118-1	2002 PTO SHIELD MOUNT BRACKET (2002 SERIAL NUMBERS AND LATER)	9	31-0011	PVC PIPE GUARD 71-1/2"
4	14-0003-2	1-1/4" TWO BOLT FLANGE	10	37-0007	SHAFT COUPLER
	14-0002-3	1-1/4" BEARING W/LOCK COLLAR	11	19-0044	RIGHT ANGLE GEARBOX
	14-0003-1	1-1/4" PILLOW BLOCK FLANGE	12	31-0009	PVC PIPE GUARD 30"
4A	14-0032	CAST PILLOW BLOCK BEARING AND ZERK	13	23-0037	CROSS DRIVE SHAFT 42-3/8"
5	24-0113	2001 DUMPBOX PTO SHIELD ASSY (PRIOR TO 2002 SERIAL NUMBERS)	14	23-0041	IDLER SHAFT WELDMENT
	24-0118	2002 DUMPBOX PTO SHIELD ASSY (2002 SERIAL NUMBERS AND LATER)	15	23-0052-2	PTO OUTPUT SHAFT (PRIOR TO 1994)
6	14-0002-3	1-1/4" BEARING W/LOCK COLLAR		23-0052-2-HD	PTO OUTPUT SHAFT (1994-2001)
7	14-0003-1	1-1/4" PILLOW BLOCK FLANGE		23-0076-1	PTO OUTPUT SHAFT (2002 AND LATER)
8	23-0077	2001 12' MAIN DRIVE SHAFT 122-1/2"	16	910-0003	80B45 SPROCKET
	23-0067	94-'00 14' MAIN DRIVE SHAFT 142-3/4"	17	11-0115	80-61 ROLLER CHAIN
	23-0075	2001 14' MAIN DRIVE SHAFT 146-1/2"		911-0004-HD	80HD-62 ROLLER CHAIN
	23-0036	PRE '94 16'&24' MAIN DRIVE SHAFT 170-1/2"	18	10-0065	SPROCKET WELDMENT 80A 12/60A48
	23-0053	94-'00 16'&24' MAIN DRIVE SHAFT 166-3/4"	19	901-3618-6	WOOD TIGHTENER BLOCK
	23-0072	2001 16'&24' MAIN DRIVE SHAFT 170-1/2"	20	929-3601	SPRING
	23-0035	PRE '94 18'&22' MAIN DRIVE SHAFT 194-1/2"	21	933-3804	EYE BOLT
	23-0054	94-'00 18' MAIN DRIVE SHAFT 190-3/4"	22	11-0041	60-65 ROLLER CHAIN
	23-0073	2001 18'&22' MAIN DRIVE SHAFT 194-1/2"	23	10-0062	60B15 SPROCKET
	23-0042	PRE '94 20' MAIN DRIVE SHAFT 218-1/2"	27	25-0176	SUPPORT ARM
			28	100-9990-22	IDLER SHAFT BOLT W/ZERK
			29	25-0196-3	IDLER TIGHTENER WELDMENT
			30	25-0195-3	DRIVE TIGHTENER WELDMENT
			32	25-0194	SPRING TIGHTENER ANGLE
			33	914-3602	FOUR BOLT FLANGE BEARING 1-1/2"
			34	24-0106-5	REAR SHIELD FRAME
			35	25-0196-4	TIGHTENER CATCH
			36	24-0106	CLUSTER SHIELD (RED OR BLACK)
				24-0106-7	CLUSTER SHIELD DOOR W/HINGE (RED OR BLACK)
			37	35-0008	1/2"X1/2"X2" KEY
			38	35-0014	1/4"X1/4"X4-1/2" KEY
			39	35-0021	1/4X1/4X1-3/4 KEY

# REAR DISCHARGE DOOR COMPONENTS



31-4100 RearDischargeDoorComponents.cdr

## REAR DISCHARGE DOOR COMPONENTS

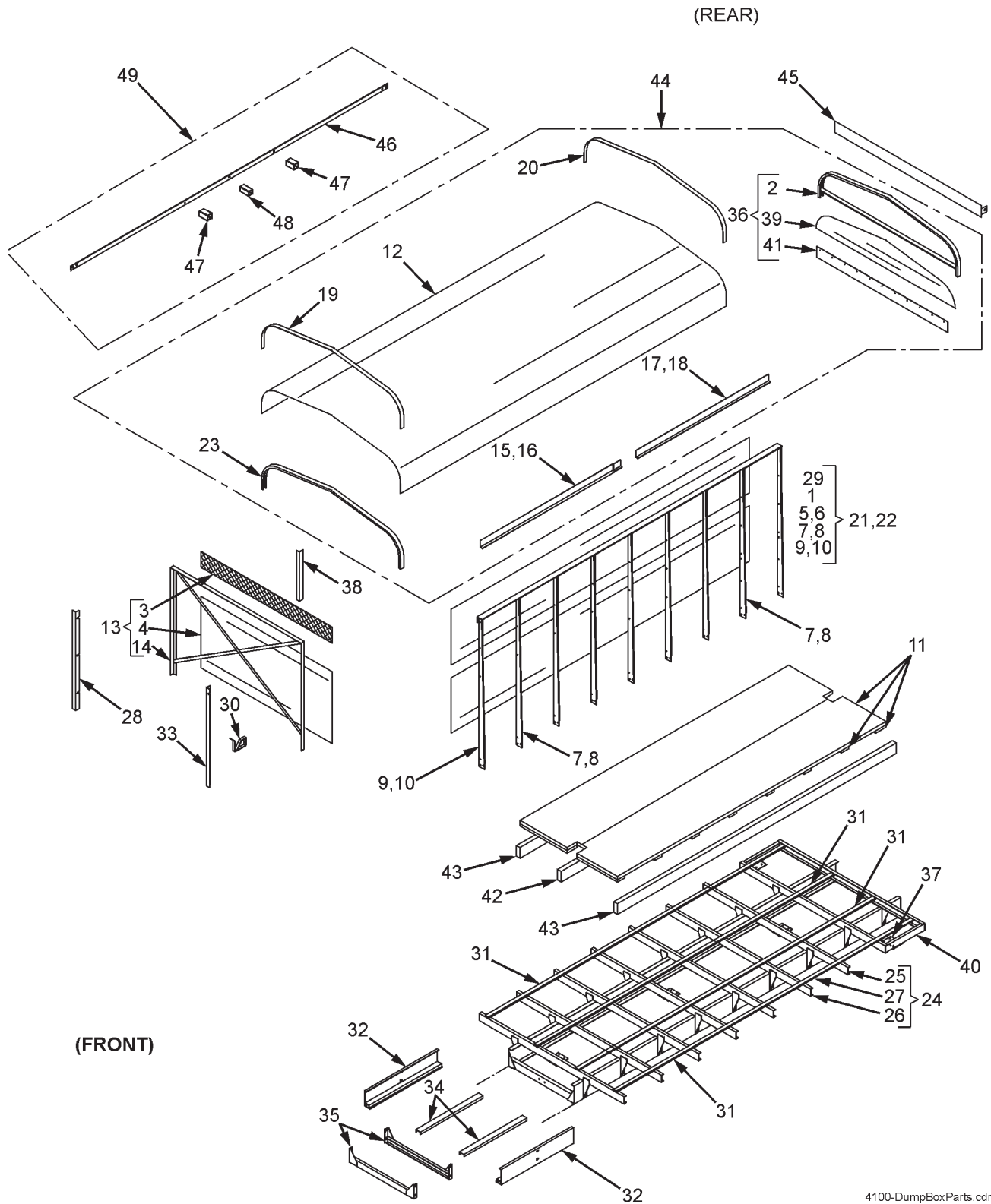
KEY	PART NO.	DESCRIPTION
0	100-9994-55	3100 DUMPBOX BACKGATE COMPLETE
	100-9994-55-HD-L	3100 DUMPBOX BACKGATE COMPLETE FOR 12" HIGHER SIDES
	100-9990-34	4100 DUMPBOX BACKGATE COMPLETE
	100-9990-34-HD-L	4100 DUMPBOX BACKGATE COMPLETE FOR 12" HIGHER SIDES
1	25-0179	BEARING BRACKET BRACE (RED OR BLACK)
2	25-0190-1	LEFT MAIN ROLLER BRACKET (RED OR BLACK)(ALL PTO MODELS AND HYD MODELS SN QD12201 & LATER)
	25-0190	HYD LEFT MAIN ROLLER BRACKET (RED OR BLACK) (PRIOR TO SN QD12201)
3	100-9990-23	LEFT GATE SIDE FRAME (RED OR BLACK)
	100-9990-23-12	LEFT GATE SIDE FRAME 12" HIGHER (RED OR BLACK)
4	100-9990-25-12	LATCH CATCH (RED OR BLACK)
5	100-9990-34-1	BACK GATE FRAME ONLY (RED OR BLACK)
	100-9990-34-1-HD-L	BACK GATE FRAME ONLY FOR 12" HIGHER SIDES (RED OR BLACK)
6	33-1002	SLOW MOVING VEHICLE BRACKET
7	100-9994-11	3100 ALUMINIZED BACK GATE PANEL 40-3/4" X 84"
	761II-40.75-84	4100 PAINTED BACK GATE PANEL 40-3/4" X 84"
8	100-9990-24	RIGHT GATE SIDE FRAME (RED OR BLACK)
	100-9990-24-12	RIGHT GATE SIDE FRAME 12" HIGHER (RED OR BLACK)
9	25-0218-1	RIGHT MAIN ROLLER BRACKET (RED OR BLACK)
10	100-9990-115	REAR GATE PIVOT, RH (RED OR BLACK)
11	100-9990-116	REAR GATE PIVOT, LH (RED OR BLACK)
12	49-0022	REAR GATE BELTING 3-1/2" X 84-1/2"
13	100-9990-34-6	12" HIGHER GATE TOP PANEL
14	100-9990-87	NO ROOF ANGLE WELDED ASSEMBLY
15	100-9990-25-15	BACKGATE HINGE BRACKET WELDMENT W/PIVOT SHAFT STOP WASHER(SHIP LOOSE)



**DUMP BOX PARTS  
4100 SERIES**

KEY	PART NO.	DESCRIPTION
1	761II-40.75-16	16' SIDE PANEL, 20 GA X 40-3/4" PAINTED
	761II-40.75-18	18' SIDE PANEL, 20 GA X 40-3/4" PAINTED
	761II-40.75-20	20' SIDE PANEL, 20 GA X 40-3/4" PAINTED
	761II-40.75-22	22' SIDE PANEL, 20 GA X 40-3/4" PAINTED
	761II-40.75-24	24' SIDE PANEL, 20 GA X 40-3/4" PAINTED
2	100-9990-37-1	REAR ROOF BOW WELDED ASSEMBLY (RED OR BLACK)
3	100-9990-26-10	FRONT GATE PANEL - SCREEN (STD)
4	100-9994-26-7	20 GA FRONT END GATE PANEL PAINTED
5	100-9990-8-3	DUMP FRONT RIGHT (TSS REAR LEFT UPRIGHT) 10 GA X 82-1/2"
6	100-9990-8-4	DUMP FRONT LEFT (TSS REAR RIGHT UPRIGHT) 10 GA X 82-1/2"
7	100-9990-8-5	DUMP CENTER RIGHT (TSS CENTER LEFT UPRIGHT) 10 GA X 82-1/2"
8	100-9990-8-6	DUMP CENTER LEFT (TSS CENTER RIGHT UPRIGHT) 10 GA X 82-1/2"
9	100-9990-8-1	DUMP REAR RIGHT (TSS FRONT LEFT UPRIGHT) 10 GA X 82-1/2"
10	100-9990-8-2-1	DUMP REAR LEFT (TSS FRONT RIGHT UPRIGHT) 10 GA X 82-1/2"
11	100-9990-161	FLOOR COMPLETE 16'
	100-9990-10	FLOOR COMPLETE 18' (PRIOR TO 2003 MODELS)
	100-9990-162	FLOOR COMPLETE 18'
	100-9990-53	FLOOR COMPLETE 20' (PRIOR TO 2003 MODELS)
	100-9990-163	FLOOR COMPLETE 20'
	100-9990-164	FLOOR COMPLETE 22'
	100-9990-165	FLOOR COMPLETE 24'
12	100-9990-14-2	16' ROOF PANEL PAINTED 17'2" (4)
	100-9990-123-1	16' ROOF PANEL PAINTED FLUSH (4)
	100-9990-15-8	18' ROOF PANEL PAINTED 19'2" (4)
	100-9990-124-1	18' ROOF PANEL PAINTED FLUSH (4)
	100-9990-51-1	20' ROOF PANEL PAINTED 21'2" (4)
	100-9990-125-1	20' ROOF PANEL PAINTED FLUSH (4)
	100-9990-54-1	22' ROOF PANEL PAINTED 23'3" (4)
	100-9990-126-1	22' ROOF PANEL PAINTED FLUSH (4)
13	100-9990-26	FRONT END GATE COMPLETE
14	100-9990-26-5	FRONT END GATE FRAME ONLY (RED OR BLACK)
15	100-9990-120	ROOF ANGLE LEFT
	100-9990-126-2	ROOF ANGLE LEFT 130" (22')
16	100-9990-121	ROOF ANGLE RIGHT
	100-9990-126-3	ROOF ANGLE RIGHT 130" (22')
17	100-9990-64-1	LEFT ROOF ANGLE EXT. 16'
	100-9990-63-1	LEFT ROOF ANGLE EXT. 18'
	100-9990-69	LEFT ROOF ANGLE EXT. 20', 22'
18	100-9990-65-1	RIGHT ROOF ANGLE EXT. 16'
	100-9990-62-1	RIGHT ROOF ANGLE EXT. 18'
	100-9990-70	RIGHT ROOF ANGLE EXT. 20', 22'
19	100-9990-14-4	FRONT ROOF STRAP/CAP
20	100-9990-14-3	REAR ROOF GUARD STRAP

# DUMP BOX PARTS (CONT'D) 4100 SERIES



4100-DumpBoxParts.cdr

**DUMP BOX PARTS  
4100 SERIES**

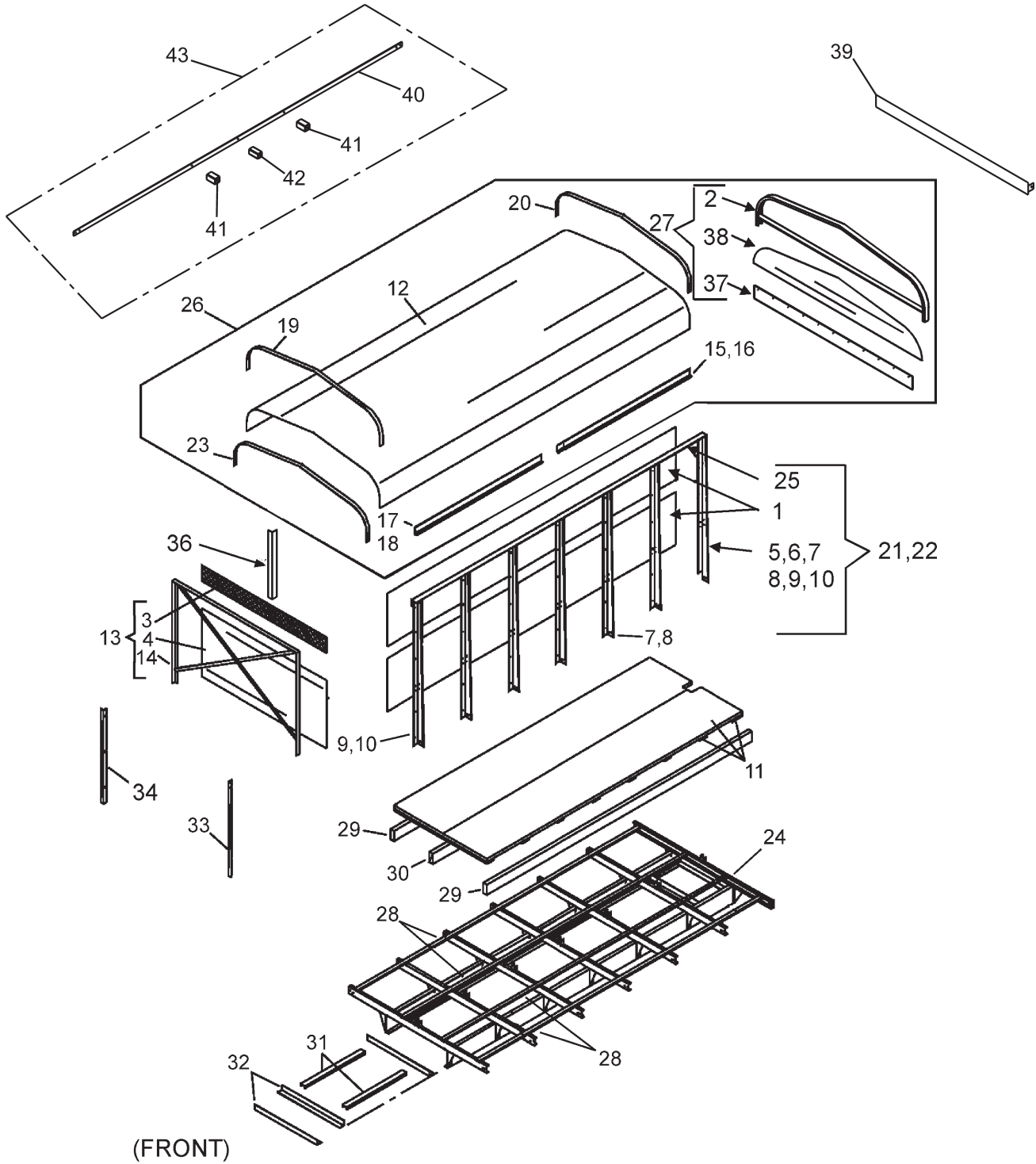
<b>KEY</b>	<b>PART NO.</b>	<b>DESCRIPTION</b>
21	100-9990-100	LEFT SIDE, COMPLETE 16'
	100-9990-102	LEFT SIDE, COMPLETE 18'
	100-9990-104	LEFT SIDE, COMPLETE 20' (ILLUSTRATED)
	100-9990-117	LEFT SIDE, COMPLETE 22'
	100-9990-127	LEFT SIDE, COMPLETE 24'
22	100-9990-101	RIGHT SIDE, COMPLETE 16'
	100-9990-103	RIGHT SIDE, COMPLETE 18'
	100-9990-105	RIGHT SIDE, COMPLETE 20'
	100-9990-118	RIGHT SIDE, COMPLETE 22'
	100-9990-128	RIGHT SIDE, COMPLETE 24'
23	100-9990-15-1	ROOF BOW
24	100-9990-140	BOTTOM FRAME COMPLETE HYD 16'
	100-9990-40	BOTTOM FRAME COMPLETE PTO 16'
	100-9990-141	BOTTOM FRAME COMPLETE HYD 18'
	100-9990-41	BOTTOM FRAME COMPLETE PTO 18'
24	100-9990-142	BOTTOM FRAME COMPLETE HYD 20'
	100-9990-42	BOTTOM FRAME COMPLETE PTO 20'
	100-9990-143	BOTTOM FRAME COMPLETE HYD 22'
	100-9990-43	BOTTOM FRAME COMPLETE PTO 22'
	100-9990-129-TR	BOTTOM FRAME, TRUCK MT COMPLETE PTO 24'
25	100-9990-1-11	REAR CROSS CHANNEL WELDED ASSEMBLY
	100-9990-1-11-TR	REAR CROSS CHANNEL WELDED ASSEMBLY FOR TRUCK MOUNT
26	100-9990-1-5	CROSS CHANNELS 94-1/2" W/ GUSSETS
27	100-9990-2-1	10" CHANNEL BED PIECE (15'10")
	100-9990-1-1	10" CHANNEL BED PIECE (17'10")
	100-9990-50-1	10" CHANNEL BED PIECE (19'10")
	100-9990-53-1	10" CHANNEL BED PIECE (21'10")
	100-9990-59-1	6" CHANNEL BED PIECE TRUCK MOUNT (23' 10")
28	100-9990-33	SIDE END GATE CAP RIGHT 49-1/2" (RED OR BLACK)
	100-9990-16	SIDE END GATE CAP 69-1/2" (RED OR BLACK)
	100-9990-16-L-12	SIDE END GATE CAP DUMP RIGHT (TSS LEFT) 81-1/2" (RED OR BLACK)
29	100-9990-6-2	TOP RAIL 16' (RED OR BLACK)
	100-9990-8-8	TOP RAIL 18' (RED OR BLACK)
	100-9990-52-1	TOP RAIL 20' (RED OR BLACK)
	100-9990-97-7	TOP RAIL 22' (RED OR BLACK)
	100-9990-96-1	TOP RAIL 24' (RED OR BLACK)
30	25-0006	PTO HANGER BRACKET
	33-0032	PTO SECURING TARP STRAP
31	701-.75-1.75-16	CHAIN RETURN SLIDE RAIL 16'
	701-.75-1.75-18	CHAIN RETURN SLIDE RAIL 18'
	701-.75-1.75-20	CHAIN RETURN SLIDE RAIL 20' & 22'
	706-1X3-10.25	CHAIN RETURN SLIDE RAIL EXTENSION 24'
	709-1X3-16.25	CHAIN RETURN SLIDE RAIL 24'



**DUMP BOX PARTS  
4100 SERIES**

KEY	PART NO.	DESCRIPTION
32	100-9990-1-10	10" REAR STEEL STRINGER, REINFORCING PLATE (18' + FLOOR LENGTHS)
33	100-9990-32	SIDE END GATE CAP LEFT 49-1/2" (RED OR BLACK)
	100-9990-16	SIDE END GATE CAP 69-1/2" (RED OR BLACK)
	100-9990-16-R-12	SIDE END GATE CAP DUMP LEFT (TSS RIGHT) 81-1/2" (RED OR BLACK)
34	100-9999-39	3" SIDE CHANNEL SUPPORT
35	100-9999-38	MAIN STRINGER SUPPORT
	100-9999-38-TR	TRUCK MOUNT MAIN STRINGER SUPPORT ASSEMBLY
36	100-9990-37	DUMP REAR ROOF BOW PANEL ASSEMBLY
37	100-9990-1-11-1-1	REAR CROSS CHANNEL UPRIGHT SUPPORT
38	100-9990-26-8	CENTER GATE SUPPORT ANGLE
39	100-9990-37-3	REAR ROOF BOW PANEL
40	25-0175	DRIVE CHANNEL BRACKET
41	49-0019	REAR ROOF PANEL BELTING
42	701-2X6-16-S	CENTER FLOOR SUPPORT 16'
	701-2X6-18-S	CENTER FLOOR SUPPORT 18'
	701-2X6-20-S	CENTER FLOOR SUPPORT 20'
	701-2X6-24-S	CENTER FLOOR SUPPORT 22' & 24'
43	701-3X6-16-S	OUTER FLOOR SUPPORT 16'
	701-3X6-18-S	OUTER FLOOR SUPPORT 18'
	701-3X6-20-S	OUTER FLOOR SUPPORT 20'
	701-3X6-24-S	OUTER FLOOR SUPPORT 22' & 24'
44	100-9990-123	16' FLUSH ROOF COMPLETE (STD)
	100-9990-47	16' CROP SAVER ROOF COMPLETE
	100-9990-124	18' FLUSH ROOF COMPLETE (STD)
	100-9990-48	18' CROP SAVER ROOF COMPLETE
	100-9990-125	20' FLUSH ROOF COMPLETE (STD)
	100-9990-51	20' CROP SAVER ROOF COMPLETE
	100-9990-126	22' FLUSH ROOF COMPLETE (STD)
	100-9990-49	22' CROP SAVER ROOF COMPLETE
45	100-9990-87	NO ROOF ANGLE
46	100-9990-8-11	16' & 18' BOX, SIDE SUPPORT STRAP 171"
	100-9990-52-2	20' & 22' BOX, SIDE SUPPORT STRAP 219"
47	100-9990-52-4	SIDE SUPPORT END TUBE
48	100-9990-52-3	SIDE SUPPORT CENTER TUBE
49	TSS-SS-16-PKG	16' & 18' SIDE SUPPORT PACKAGE
	TSS-SS-20-PKG	20' & 22' SIDE SUPPORT PACKAGE

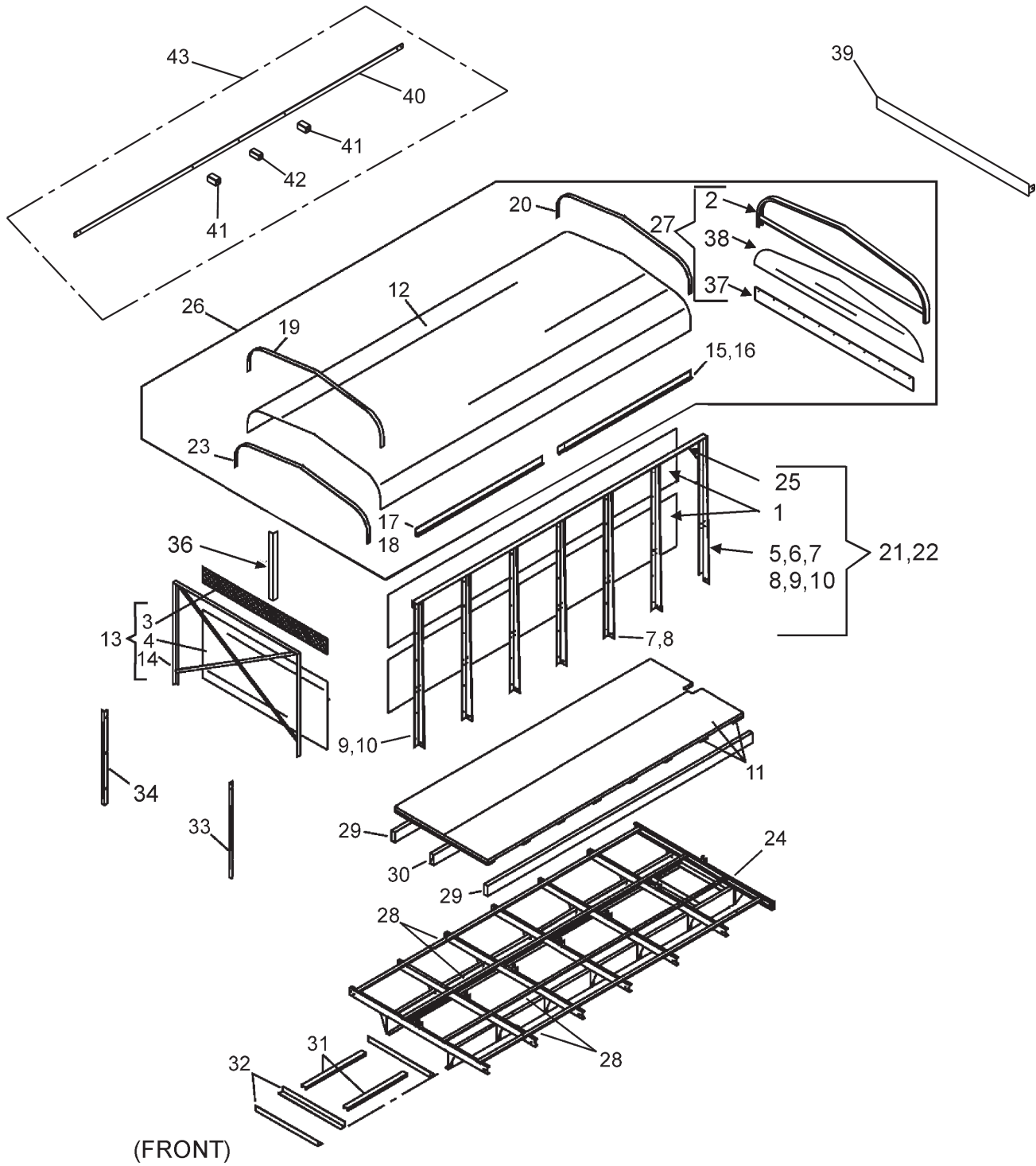
# WELDED BOX PARTS 3100 SERIES



**WELDED BOX PARTS  
3100 SERIES**

KEY	PART NO.	DESCRIPTION
1	100-9995-19	14' SIDE PANEL 20 GA X 40-3/4" ALUMINIZED
	100-9995-18	16' SIDE PANEL 20 GA X 40-3/4" ALUMINIZED
	100-9995-17	18' SIDE PANEL 20 GA X 40-3/4" ALUMINIZED
	100-9994-10	20' SIDE PANEL 20 GA X 40-3/4" ALUMINIZED
2	100-9990-37-1	REAR ROOF BOW WELDED ASSEMBLY (RED OR BLACK)
3	100-9990-26-10	FRONT GATE SCREEN PAINTED
4	100-9994-50-1	20 GA FRONT END GATE PANEL ALUMINIZED
5	100-9990-8-3	FRONT RIGHT (TSS REAR LEFT) UPRIGHT 10 GA X 82-1/2"
6	100-9990-8-4	FRONT LEFT (TSS REAR RIGHT) UPRIGHT 10 GA X 82-1/2"
7	100-9990-8-5	CENTER RIGHT (TSS CENTER LEFT) UPRIGHT 10 GA X 82-1/2"
8	100-9990-8-6	CENTER LEFT (TSS CENTER RIGHT) UPRIGHT 10 GA X 82-1/2"
9	100-9990-8-1	REAR RIGHT (TSS FRONT LEFT) UPRIGHT 10 GA X 82-1/2"
10	100-9990-8-2	REAR LEFT (TSS FRONT RIGHT) UPRIGHT 10 GA X 82-1/2"
11	100-9990-12	FLOOR COMPLETE 14' PRIOR TO 2003
	100-9990-160	FLOOR COMPLETE 14'
	100-9990-11	FLOOR COMPLETE 16' PRIOR TO 2003
	100-9990-161	FLOOR COMPLETE 16'
	100-9990-10	FLOOR COMPLETE 18' PRIOR TO 2003
	100-9990-162	FLOOR COMPLETE 18'
	100-9990-163	FLOOR COMPLETE 20'
12	100-9990-13-2	14' ROOF PANEL PAINTED 15'2" (4)
	100-9990-122-1	14' ROOF PANEL PAINTED FLUSH (4)
	100-9990-14-2	16' ROOF PANEL PAINTED 17'2" (4)
	100-9990-123-1	16' ROOF PANEL PAINTED FLUSH (4)
	100-9990-15-8	18' ROOF PANEL PAINTED 19'2" (4)
	100-9990-124-1	18' ROOF PANEL PAINTED FLUSH (4)
	100-9990-51-1	20' ROOF PANEL PAINTED 21'2" (4)
	100-9990-125-1	20' ROOF PANEL PAINTED FLUSH (4)
13	100-9994-50	FRONT GATE ASSEMBLY COMPLETE
14	100-9990-26-5	FRONT GATE FRAME ONLY (RED OR BLACK)
15	100-9990-120	ROOF ANGLE LEFT
16	100-9990-121	ROOF ANGLE RIGHT
17	100-9990-66-1	LEFT ROOF ANGLE EXT 14'
	100-9990-64-1	LEFT ROOF ANGLE EXT 16'
	100-9990-62-1	LEFT ROOF ANGLE EXT 18'
	100-9990-69	LEFT ROOF ANGLE EXT 20'
18	100-9990-67-1	RIGHT ROOF ANGLE EXT 14'
	100-9990-65-1	RIGHT ROOF ANGLE EXT 16'
	100-9990-63-1	RIGHT ROOF ANGLE EXT 18'
	100-9990-70	RIGHT ROOF ANGLE EXT 20'
19	100-9990-14-4	FRONT ROOF STRAP/CAP
20	100-9990-14-3	ROOF GUARD STRAP
21	100-9994-32	LEFT SIDE, COMPLETE 14'
	100-9994-26	LEFT SIDE, COMPLETE 16'
	100-9994-28	LEFT SIDE, COMPLETE 18'
	100-9994-30	LEFT SIDE, COMPLETE 20'
22	100-9994-31	RIGHT SIDE COMPLETE 14'
	100-9994-25	RIGHT SIDE COMPLETE 16'
	100-9994-27	RIGHT SIDE COMPLETE 18'
	100-9994-29	RIGHT SIDE COMPLETE 20'
23	100-9990-15-1	ROOF BOW

**WELDED BOX PARTS (CONT'D)  
3100 SERIES**



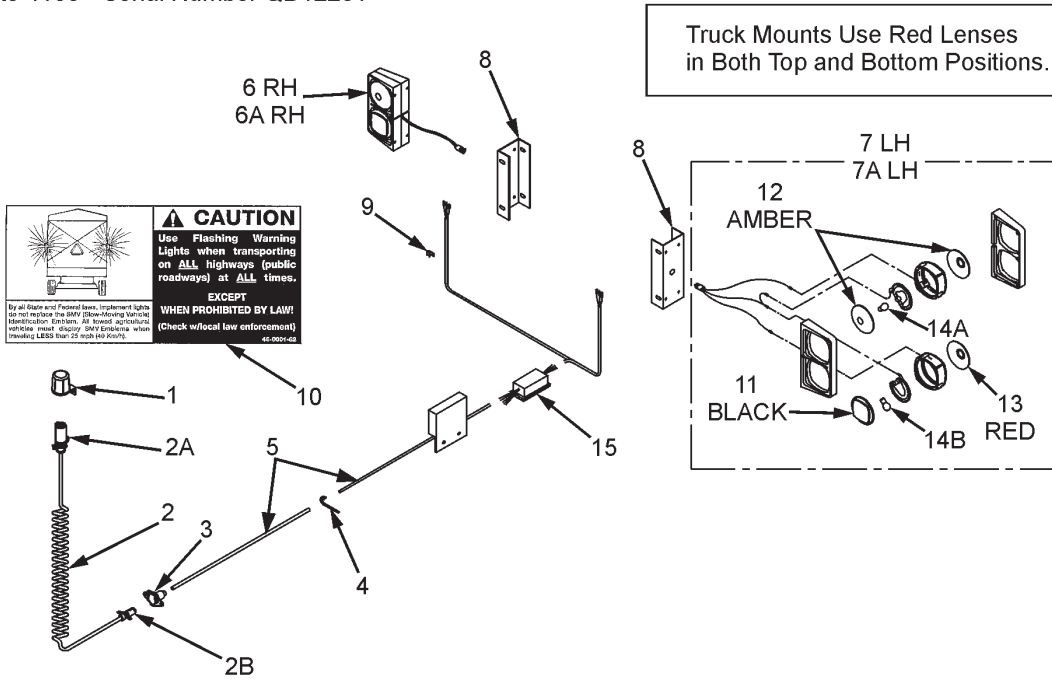
**WELDED BOX PARTS  
3100 SERIES**

<b>KEY</b>	<b>PART NO.</b>	<b>DESCRIPTION</b>
24	100-9994-16	BOTTOM FRAME COMPLETE 14'
	100-9994-23	HYD BOTTOM FRAME COMPLETE 14'
	100-9994-23-TR	HYD BOTTOM FRAME COMPLETE 14' TRUCK MOUNT
	100-9994-12	BOTTOM FRAME COMPLETE 16'
	100-9994-20	HYD BOTTOM FRAME COMPLETE 16'
	100-9994-20-TR	HYD BOTTOM FRAME COMPLETE 16' TRUCK MOUNT
	100-9994-13	BOTTOM FRAME COMPLETE 18'
	100-9994-21	HYD BOTTOM FRAME COMPLETE 18'
	100-9994-21-TR	HYD BOTTOM FRAME COMPLETE 18' TRUCK MOUNT
	100-9994-15	BOTTOM FRAME COMPLETE 20'
	100-9994-22	HYD BOTTOM FRAME COMPLETE 20'
25	100-9990-4-2	TOP RAIL 14' (RED OR BLACK)
	100-9990-6-2	TOP RAIL 16' (RED OR BLACK)
	100-9990-8-8	TOP RAIL 18' (RED OR BLACK)
	100-9990-52-1	TOP RAIL 20' (RED OR BLACK)
26	100-9990-122	14' FLUSH ROOF COMPLETE (STD)
	100-9992-22	14' CROP SAVER ROOF COMPLETE
	100-9990-123	16' FLUSH ROOF COMPLETE (STD)
	100-9992-23	16' CROP SAVER ROOF COMPLETE
	100-9990-124	18' FLUSH ROOF COMPLETE (STD)
	100-9992-24	18' CROP SAVER ROOF COMPLETE
	100-9990-125	20' FLUSH ROOF COMPLETE (STD)
	100-9992-25	20' CROP SAVER ROOF COMPLETE
27	100-9995-120	REAR ROOF BOW ASSEMBLY COMPLETE
28	701-.75-1.75-16	14' & 16' CHAIN SLIDE RAILS
	701-.75-1.75-18	18' CHAIN SLIDE RAILS
	701-.75-1.75-20	20' CHAIN SLIDE RAILS
29	701-3X6-16-S	OUTER FLOOR SUPPORT 3X6X16' (14' & 16')
	701-3X6-18-S	OUTER FLOOR SUPPORT 3X6X18' (18')
	701-3X6-20-S	OUTER FLOOR SUPPORT 3X6X20' (20')
30	701-2X6-16-S	CENTER FLOOR SUPPORT 2X6X16' (14' & 16')
	701-2X6-18-S	CENTER FLOOR SUPPORT 2X6X18' (18')
	701-2X6-20-S	CENTER FLOOR SUPPORT 2X6X20' (20')
31	100-9999-39	STRINGER SUPPORT CHANNEL
32	100-9994-1-2	STRINGER SUPPORT CROSS ANGLE
33	100-9990-32	SIDE END GATE CAP LEFT 49-1/2" (RED OR BLACK)
	100-9990-16	SIDE END GATE CAP 69-1/2" (RED OR BLACK)
	100-9990-16-R-12	SIDE END GATE CAP DUMP LEFT (TSS RIGHT) 81-1/2" (RED OR BLACK)
34	100-9990-33	SIDE END GATE CAP RIGHT 49-1/2" (RED OR BLACK)
	100-9990-16	SIDE END GATE CAP 69-1/2" (RED OR BLACK)
	100-9990-16-L-12	SIDE END GATE CAP DUMP RIGHT (TSS LEFT) 81-1/2" (RED OR BLACK)
35	25-0006	PTO HANGER BRACKET
36	100-9990-26-8	CENTER GATE SUPPORT ANGLE
37	49-0019	REAR ROOF PANEL BELTING
38	100-9990-37-3	BACK ROOF PANEL, 20-3/8"X86 ALUMINIZED
39	100-9990-87	NO ROOF ANGLE
40	100-9990-8-11	16' & 18' BOX, SIDE SUPPORT STRAP 171"
	100-9990-52-2	20' & 22' BOX, SIDE SUPPORT STRAP 219"
41	100-9990-52-4	SIDE SUPPORT END TUBE
42	100-9990-52-3	SIDE SUPPORT CENTER TUBE
43	TSS-SS-16-PKG	16' & 18' SIDE SUPPORT PACKAGE
	TSS-SS-20-PKG	20' & 22' SIDE SUPPORT PACKAGE

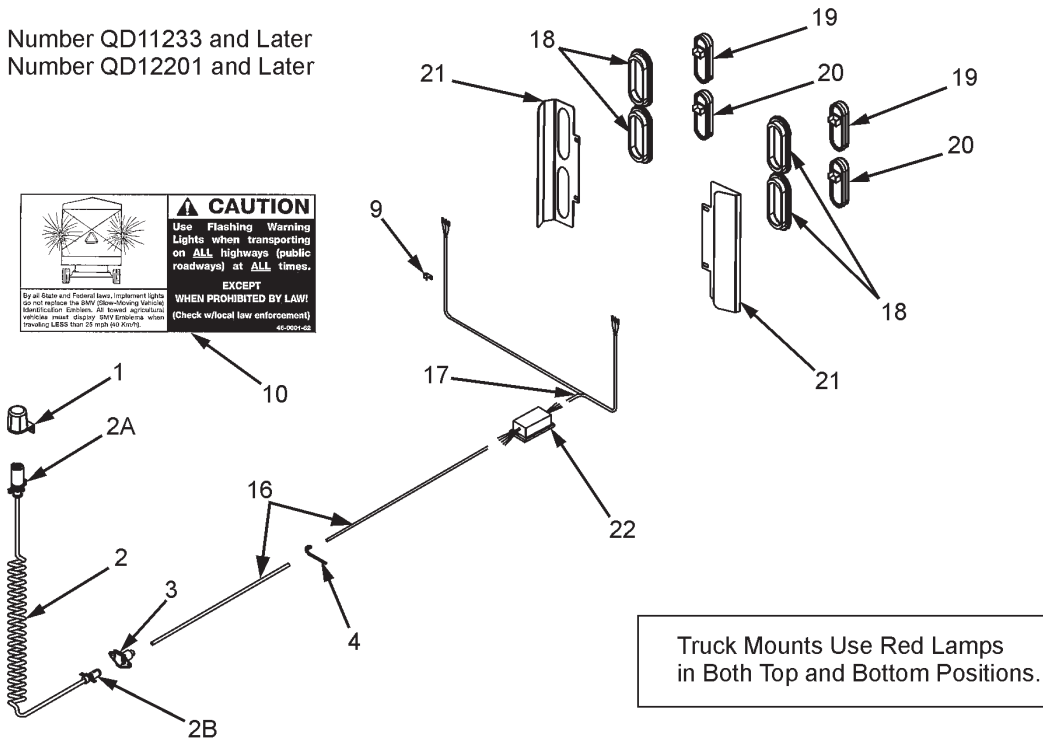
# HIGHWAY TRANSPORT AG LIGHTS

## #52-0020-LED-PKG

Prior to 3100 - Serial Number QD11233  
 Prior to 4100 - Serial Number QD12201



3100 - Serial Number QD11233 and Later  
 4100 - Serial Number QD12201 and Later

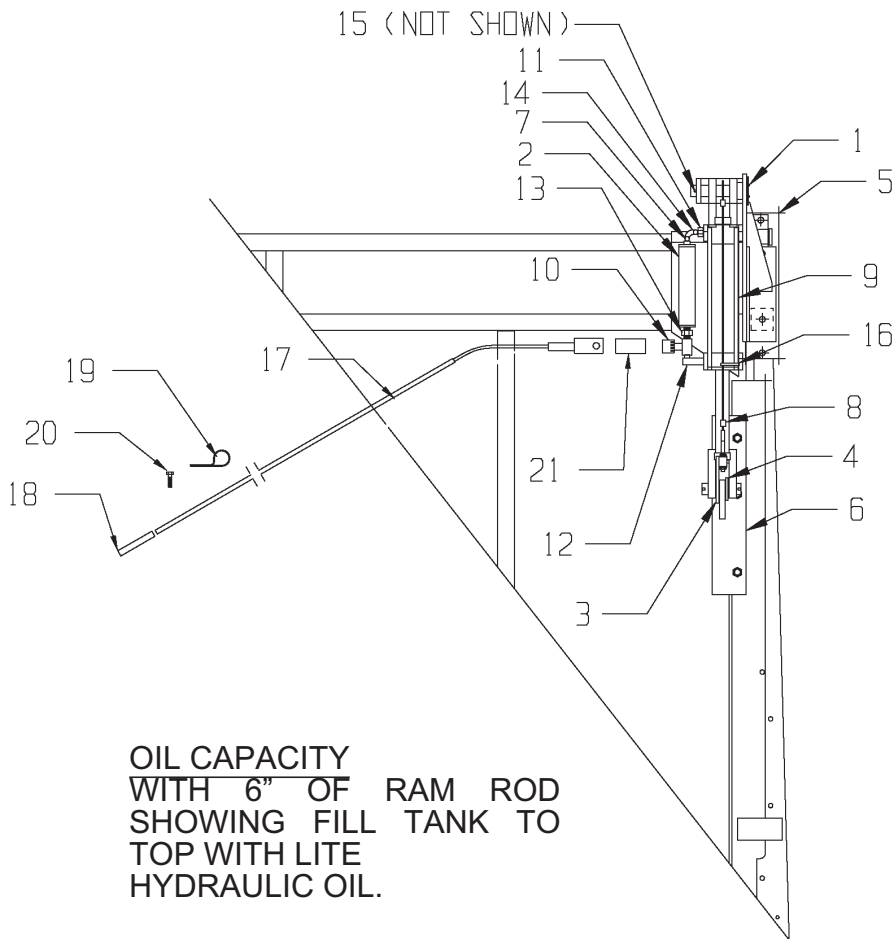


31-4100-HighwayTransportAGLights.cdr

**HIGHWAY TRANSPORT AG LIGHTS  
#52-0020-LED-PKG**

KEY	PART NO.	QTY.	DESCRIPTION
0	52-0020-LED-PKG	AR	LED LIGHT PACKAGE
1	56-0009	1	7-WAY "STOR-A-WAY"
2	56-0005	1	COIL CABLE ASSEMBLY
2A	56-0005-2	1	7-CONTACT PLUG END ONLY
2B	56-0005-1	1	4 HOLE PLUG
3	56-0004	1	#1232 4-WAY SOCKET (4 PIN)
4	32-0026	8	14" NYLON TIE STRAP
5	56-0032	1	AG LIGHT HARNESS W/MODULE
6	56-0031	1	DUAL LIGHT RH W/4-PLUG
6A	56-0031-TR	1	TRUCK MOUNT DUAL LIGHT RH W/4-PLUG
6/6A	56-0034	AR	ADAPTER HARNESS 3-PLUG TO 4-PLUG (NEEDED IN ADDITION TO LIGHT FOR SERIAL #'S PRIOR TO QD06201 WITH 3-PLUG LIGHTS)
7	56-0031	1	DUAL LIGHT LH W/4-PLUG
7A	56-0031-TR	1	TRUCK MOUNT DUAL LIGHT LH W/4-PLUG
7/7A	56-0034	AR	ADAPTER HARNESS 3-PLUG TO 4-PLUG (NEEDED IN ADDITION TO LIGHT FOR SERIAL #'S PRIOR TO QD06201 WITH 3-PLUG LIGHTS)
8	25-0255	2	LIGHT MOUNT BRACKET (UNIVERSAL)
9	32-0024	4	3/8" PLATED LOOM CLAMP
10	46-0001-62	1	CAUTION TAIL LIGHT DECAL
11	56-0001-3	2	BEZEL BLANK, BLACK (FIT INSIDE HOUSING)
	56-0030-3	2	BEZEL BLANK, BLACK (FIT OVER HOUSING)
12	56-0001-1	4	AMBER LENS (FIT INSIDE HOUSING)
	56-0030-1	4	AMBER LENS (FIT OVER HOUSING)
13	56-0001-2	2	RED LENS (FIT INSIDE HOUSING)
	56-0030-2	2	RED LENS (FIT OVER HOUSING)
14	56-0001-4	4	#1157 BULB
14A	56-0001-5	2	#1156 SINGLE FILAMENT BULB
14B	56-0001-4	2	#1157 DUAL FILAMENT BULB
15	56-0032-1	1	AG MODULE W/CONNECTORS
16	56-0037	AR	4 CONDUCTOR TRAILER CABLE
17	56-0083	1	LED LIGHT Y-HARNESS LESS MODULE PLUGS
18	56-0065	4	6" OVAL GROMMET
19	56-0064	2	6" OVAL AMBER LED LIGHT
20	56-0063	2/4	6" OVAL RED LED LIGHT
21	25-0259	2	LED LIGHT BRACKET
22	56-0084	1	LED AG ENHANCER MODULE

## GATE DELAY 3100 & 4100 SERIES



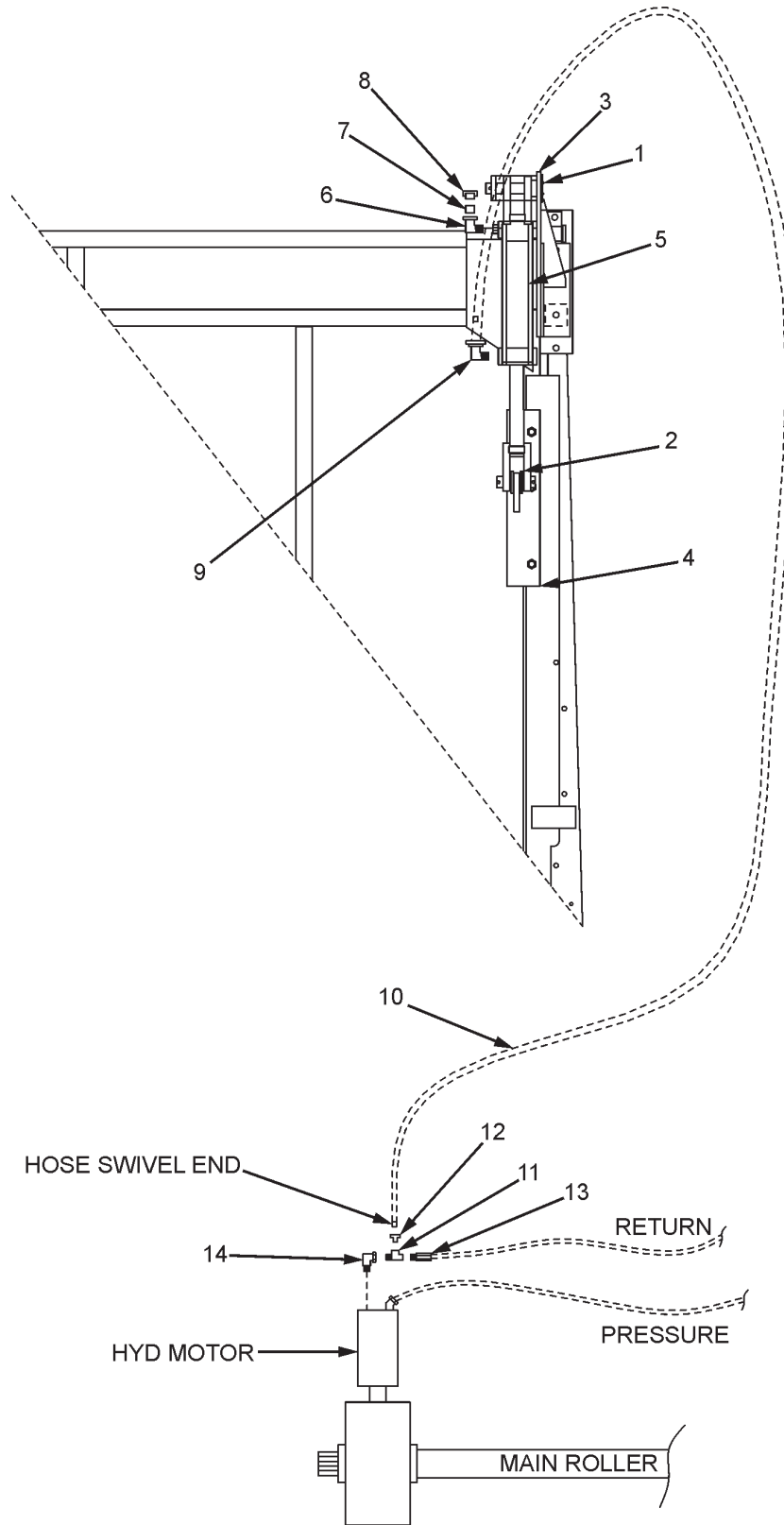
### GATE DELAY ADJUSTMENTS

When the gate is completely closed (Tight to rear upright) cable and eyebolt assembly should be adjusted so cable has no slack. Cable should be tight but not overtightened. If cable and eyebolt is overtightened lower cylinder will trip out of the L-shaped slot on the lower bracket too soon and the gate will try to close before the cylinder is stroked out. If the cable and eyebolt is too loose the lower cylinder will not trip out of the L-shaped slot and the cylinder will reach its maximum stroke and the gate will still not be in the closed position. The gate will be held open by the top cylinder bracket and the bracket may become damaged over time. Eyebolt and cable will need to be adjusted periodically to maintain proper operation.

**GATE DELAY  
3100 & 4100 SERIES**

<b>KEY</b>	<b>PART NO.</b>	<b>DESCRIPTION</b>
	4200-GATE	GATE DELAY CLOSING OPTION
1	25-8092-1	GATE REGULATOR TOP SHAFT
2	25-8095	OIL RESERVOIR ASSEMBLY
3	25-8096	GATE RELEASE TRIP ARM ASSEMBLY
4	25-8097-1	LOWER SLEEVE SPACER
5	25-8099	TOP CYLINDER BRACKET
6	25-8100	LOWER MOUNT PLATE WELDED ASSEMBLY
7	30-0015	1/4" FITTING X 90 DEGREE ELBOW
8	25-8098	CABLE EYEBOLT ASSEMBLY
9	55-0093	HYDRAULIC CYLINDER
10	55-0094	FLOW CONTROL
11	55-0095	1/8" TO 3/8" NPT REDUCER
12	55-0096	3/8" NPTF X 90 DEGREE MALE PIPE ELBOW
13	55-0097	3/8" TO 3/8" NIPPLE
14	735-.25CT	1/4" COPPER TUBING (.25 FT. REQ)
15	823-19-2	3/16 X 2" COTTER PIN
16	952-0001-7	NYLON TIE STRAP
17	25-8101	GROUND CONTROL ROD ASSY. W/GRIP
18	51-0007	HANDLE GRIP
19	933-3804	5/16 X 4" EYEBOLT
20	825-25-1Z	1/4X1" SELF TAPPING SCREW
21	25-8102-2	DRAG SLEEVE (HOSE)

# GATE DELAY/RETURN LINE (OPTIONAL) 3100 & 4100 SERIES

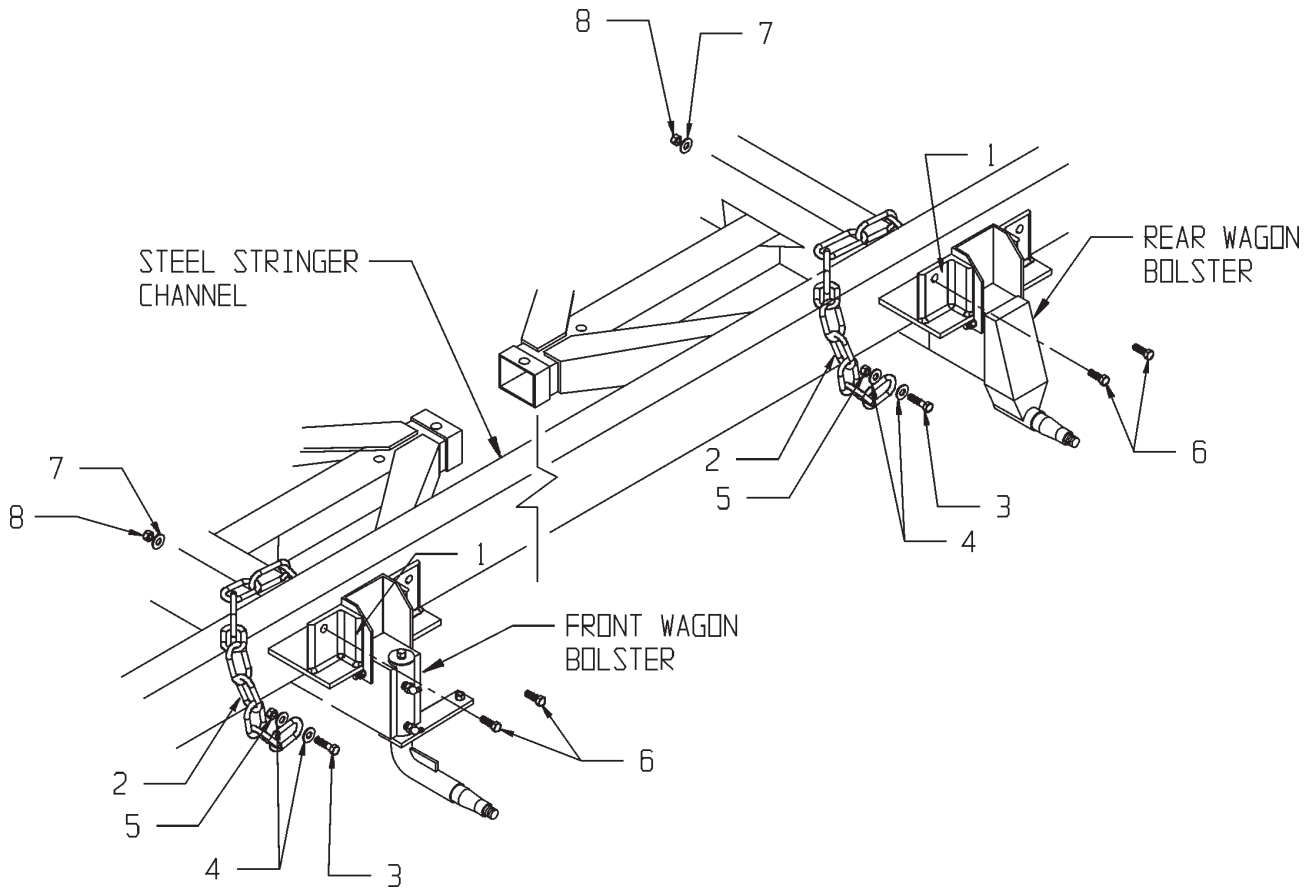


4200-GDS-RL-GATEPARTS.CDR

**GATE DELAY/RETURN LINE (OPTIONAL)  
3100 & 4100 SERIES**

<b>KEY</b>	<b>PART NO.</b>	<b>DESCRIPTION</b>
	4200-GDS-RL-PKG	RETURN LINE GATE DELAY CLOSING OPTION
	4200-GDS-RL-KIT	UPDATE PACKAGE TO SWITCH FROM GROUND CONTROL ROD TO RETURN LINE
1	25-8092-1	GATE REGULATOR TOP SHAFT
2	25-8097-1	LOWER SLEEVE SPACER
3	25-8099	TOP CYLINDER BRACKET
4	25-8112	LOWER MOUNT PLATE WELDED ASSEMBLY
5	55-0093	HYDRAULIC CYLINDER
6	55-0195	3/8 MALE X 1/4" FEMALE STREET ELBOW
7	55-0108	1/4 X 1/8" MALE TO FEMALE BUSHING
8	55-0107	1/8" NPT VENT
9	55-0196	3/8M X 1/4" SWIVEL FEMALE X 90 DEGREE ELBOW
10	55-0202	1/4X228" HOSE
11	55-0201	3/4" TEE FITTING
12	55-0174	3/4 X 1/4" BUSHING
13	55-0007-B-RF-GDRL	REVERSE FLOW CHECK VALVE W/BACK PRESSURE SPRING
14	655-0015-1	64-10-12 90 DEGREE ADAPTOR
NS	32-0033	1/2" LOOM CLAMP VINYL COATED
NS	810-2520-Z	1/4-20 SPIN LOCKNUTS
NS	851-2520-.75Z	1/4-20 X 3/4" M.B. ZINC
NS	65-0006-5	14" NYLON TIE STRAP

## TIE DOWN KIT FOR STEEL BOX



KEY	PART NO.	DESCRIPTION
	52-0003S	TIE DOWN KIT (STEEL STRINGERS)
1	25-0084	BRACKET
2	52-0003-1	STANDARD 51" CHAIN
	75-0341-4-HD	61" CHAIN FOR RISER PACKAGE
3	801-3816-1.5Z	BOLT, HEX MACHINE-3/8X1-1/2
4	805-0038-Z	3/8 FLAT WASHER
5	815-3816-Z	3/8 LOCK NUT
6	851-5013-1.5Z	1/2"X1-1/2" HEX MACHINE BOLT
	805-0050-Z	1/2 FLAT WASHERS
8	815-5013-Z	1/2 LOCK NUTS

**MEYER QUICK DUMP REAR UNLOAD FORAGE BOXES**  
**“TROUBLE SHOOTING”**

	<b>SYMPTOM</b>	<b>PROBLEM</b>	<b>SOLUTION</b>
<b>GEAR BOXES</b>	CLUNKING SOUNDS. EXCESSIVE GEAR WEAR.  BROKEN GEARS.	GEARS/BEARINGS WEARING — LOW OIL  FULL LOAD “HI” RANGE UN- LOADING.  WRONG GEAR LUBE OIL.  HIGH SPEED START-UP/NO OIL. WORN OUT GEARS.	REPLACE GEARS/BEARINGS — FILL WITH OIL  START FULL LOADS IN “LO” RANGE.  SEE LUBRICATION SECTION FOR PROPER OIL.  SLOW START-UP/FILL WITH OIL. REPLACE GEARS.
<b>MAIN APRON</b>	JUMPING LINKS. BENT APRON SLATS. BROKEN PINTLE CHAIN.	LOOSE MAIN APRON. WORN/BROKEN CHAIN.	TIGHTEN MAIN APRON. CLEAN/TIGHTEN/REPLACE APRON.
<b>PTO DRIVE SHAFT</b>	WHIPS/SHAKES.  VIBRATES UP AND DOWN.  WORN UNIVERSAL JOINTS.	OVER EXTENDED OR BENT PTO.  FORAGE BOX CENTER SHAFT BENT.  LACK OF LUBRICATION/USED	SHORTEN WAGON GEAR HITCH LENGTH. STRAIGHTEN/REPLACE PTO.  REPLACE CENTER SHAFT.  LUBRICATE JOINTS REGULARLY/REPLACE
<b>ROLLER CHAINS AND SPROCKETS</b>	EXCESSIVE CHAIN WEAR.  ROLLER CHAIN BREAKAGE.  SPROCKET TEETH TIPPED OVER.	LACK OF LUBRICATION. OUT OF ALIGNMENT/LOOSE.  LOOSE ROLLER CHAIN. WORN SPROCKETS.  WORN ROLLER CHAIN. BAD ROLLER BEARINGS.	LUBRICATE/ALIGN/TIGHTEN.  TIGHTEN ROLLER CHAINS. REPLACE SPROCKETS.  REPLACE ROLLER CHAIN. REPLACE BEARINGS.

**MEYER QUICK DUMP REAR UNLOAD FORAGE BOXES**  
**“SPECIFICATIONS”**

MODEL	3116	3118	3120	4116	4118	4120	4122
Floor Length	16' 6"	18' 6"	20' 6"	16' 6"	18' 6"	20' 6"	22' 6"
Overall Length	18' 4"	20' 4"	22' 4"	18' 4"	20' 4"	22' 4"	24' 4"
Weight	3540#	3820#	4100#	3840#	4120#	4400#	4680#
Main Apron	667H	667H	667H	667X	667X	667X	667X
Overall Width	All Models 97"						
Inside Width	All Models 87"						
Overall Height	All Models 113-1/2" w/Standard Roof						
Inside Height	All Models 94" w/Standard Roof						
Power Source	540 RPM PTO or Hydraulic Drive Motor						
Flared Side	Left or Right or Both - Optional (used w/ High Lift Dump Boxes)						
Optional	Side Support System, 12" Higher Sides - 6" Higher Roof - Rear Gate Delay						

SPECIFICATIONS SUBJECT TO CHANGE WITHOUT NOTICE OR OBLIGATION.

# Notes

MEMBER



**Manufactured by:**  
**Meyer Mfg. Corp.**

County Hwy. A West  
P.O. Box 405

Dorchester, Wisconsin 54425-0405  
Phone 715-654-5132 • FAX 715-654-5513

1-800-325-9103  
[www.meyermfg.com](http://www.meyermfg.com)

E-mail: [sales@meyermfg.com](mailto:sales@meyermfg.com)

Farm Equipment Buyers Trust the Name Meyer!



