

OPERATORS AND PARTS MANUAL NO. 01-4-SI

MEYER

**INDUSTRIAL SERIES
TWIN EXPELLER SUPER SPREADER
MODEL 5570**

**PATENTED
U.S. PATENT NO.
5,368,236
5,501,404**



DO NOT OPERATE EQUIPMENT UNTIL THIS MANUAL HAS BEEN READ AND UNDERSTOOD

MEMBER



**MANUFACTURED BY
*Meyer Mfg. Corp.***

County Hwy. A West
P.O. Box 405
Dorchester, Wisconsin 54425-0405
Phone 715-654-5132 • FAX 715-654-5513
1-800-325-9103
www.meyermfg.com
E-mail: sales@meyermfg.com



03/03

TABLE OF CONTENTS

MANUFACTURER'S WARRANTY	2
INTRODUCTION	3
SAFETY PRECAUTIONS	4
SAFETY FIRST	5
PRE-OPERATION	7
TRANSPORTING	8
FREEZING WEATHER OPERATION	8
OPERATION	9
LOADING	9
UNLOADING	9
STORAGE AFTER USE	10
ADJUSTMENTS	11
"RUN IN" READJUSTING THE <u>WEASLER</u> "MULTI DISC" PTO SLIP CLUTCH	11
4 DISC, 6 SPRINGS (1000 RPM ONLY)	11
4 DISCS, 9 SPRINGS, (540 RPM ONLY).	11
ADJUSTMENTS	13
FRONT DRIVE ROLLER CHAINS	13
SPINNER MATERIAL GUIDES	15
LUBRICATION	16
REPAIR PARTS	18
918-0004 PTO DRIVE SHAFT ASSEMBLY 35R (CAT 4 80° C.V., 540 RPM)	18
918-0006 PTO DRIVE SHAFT ASSEMBLY 35R (CAT 4 80 C.V., 1000 RPM).	19
AUGER DRIVE THIRD REDUCTION	20
FRONT SHIELD & SIDE SHAFT DRIVE	21
AUGER DRIVE FIRST REDUCTION	22
AUGER DRIVE SECOND REDUCTION	23
RH AUGER DRIVE FINAL REDUCTION	24
LH AUGER DRIVE FINAL REDUCTION	25
BOX, AUGERS & SIDE SHAFT	26
UNLOADING GATE AND GATE INDICATOR	27
SPINNERS & GEARBOX SHAFT DRIVE	28
#19-0029 SPINNER GEAR REDUCER - LEFT HAND (1:1)	29
#19-0030 SPINNER GEAR REDUCER - CENTER (1:1)	30
CORNER GEAR REDUCER - RIGHT HAND	31
HUBS, AXLE & TANDEM ASSEMBLY	32
LADDER, THIRD AUGER & GATE INDICATOR	33
INSTRUCTIONS FOR AUTOMATIC CHAIN OILER	34
MEYER INDUSTRIAL SPREADER "TROUBLE SHOOTING"	36
MEYER INDUSTRIAL SPREADER "MAINTENANCE RECORD"	37
MEYER EQUIPMENT WHEEL TORQUE	38
MEYER INDUSTRIAL SPREADER "SPECIFICATIONS"	42

NEW MEYER INDUSTRIAL SPREADER

MANUFACTURER'S WARRANTY

- I. The "Product Registration & Inspection Certificate" along with the original billing invoice "Owners Registration Form" must be completed in full and promptly returned to Meyer Mfg. Corp. for this warranty to become both valid and effective. All warranties on New Meyer Super Spreaders shall apply only to the original retail customer from an authorized Meyer Mfg. Corp. dealership.
- II. This warranty shall not apply to any Meyer Super Spreader which has been subjected to misuse, negligence, alteration, accident, incorrect operating procedures, or which shall have been repaired with parts other than those obtained through Meyer Mfg. Corp.
- III. Meyer Mfg. Corp. warrants New Meyer Super Spreaders to be free from defects in material and workmanship under recommended use and maintenance service, as stated in the Operator's and Parts Manual," as follows:
 - A. Meyer Mfg. Corp. will repair or replace F.O.B. Dorchester, WI, as Meyer Mfg. Corp. elects, any part of a new Meyer Super Spreader which is defective in material or workmanship:
 1. Without charge for either parts or labor during the first (1) year from purchase date to the original retail customer.
 - B. In addition to the above basic warranty, Meyer Mfg. Corp. will repair or replace F.O. B. Dorchester, WI as Meyer Mfg. Corp. elects:

Ten (10) Years: After a period of (1) year, the spreader tank body is warranted against rust-through for an additional period of (9) years. (Pro-Rated Parts Only). Parts included, front and rear end panels, side panels, and auger trough.
- IV. COMMERCIAL USE: Coverage as in paragraph III A1 ONLY, except warranty coverage is for (90) days for parts and labor to the original commercial retail customer.
- V. Repairs eligible for labor warranty must be made by Meyer Mfg. Corp. or an authorized Meyer dealership. The original retail customer is responsible for the transportation of the super spreader to the dealership for warranty service or for any service call expenses.
- VI. Except as stated above, Meyer Mfg. Corp. shall not be liable for injuries or damages of any kind or nature, direct, consequential, or contingent, to persons or property. This warranty does not extend to loss of crop or for any other reasons.
- VII. No person is authorized to give any other warranties or to assume any other obligation on Meyer Mfg. Corp.'s behalf unless made or assumed in writing by Meyer Mfg. Corp. This warranty is the sole and exclusive warranty which is applicable in connection with the manufacture and sale of this product and Meyer Mfg. Corp.'s responsibility is limited accordingly.
- VIII. This warranty is effective on all sales of Meyer Super Spreaders made after January 1, 1992.

INTRODUCTION

Congratulations on your purchase of a new Meyer farm equipment product. Undoubtedly you have given much consideration to your purchase and we're proud that you have selected Meyer. Pride in craftsmanship, engineering and customer service have made Meyer products the finest in the farm equipment industry today.

There is no substitute for quality. That is why thousands of people like you have purchased Meyer farm equipment. They felt it was the best equipment to serve their farming needs, now and in years to come. We ask that you follow our policy of "safety first," and we strongly suggest that you read through the owner's manual before operating your Meyer farm equipment.

Meyer Manufacturing Corporation wants to thank you for not compromising quality. We are determined to offer excellence in customer service as well as provide you with the very best value for your dollar.

REMEMBER:

**FARM EQUIPMENT BUYERS
TRUST THE NAME MEYER!**

Sincerely,

All Employees of
MEYER MANUFACTURING CORPORATION

Meyer Mfg. Corp. reserves the right to make improvements in design, or changes in specifications at any time, without incurring any obligation to owners of units previously sold.

This supersedes all previous published instructions.

IMPORTANT:

At the front of this manual is a Product Registration and Inspection Certificate. Be sure your dealer has completed this certificate and promptly forwarded a copy to Meyer Mfg. to validate the manufacturer's warranty. The product model and serial number are recorded on this certificate and below for proper identification of your Meyer Industrial Spreader by your dealer and the manufacturer when ordering repair parts. The serial number plate is found on the upper left front corner of the spreader tank or stamped in the left front frame channel.

Model No. _____

Serial No. _____

Date of Purchase _____

At the back of this manual is the repair parts section. All replacement parts are to be obtained from or ordered through your Meyer dealership. When ordering repair parts, refer to the parts section and give complete information including quantity, correct part number, detailed description and even Model No. and Serial No. of the Meyer Industrial Spreader which needs repair parts.

NOTE: All references to right hand (RH), left hand (LH), front and rear apply to the product as viewed from the rear of the spreader.

SAFETY PRECAUTIONS



This symbol is used to call attention to instructions concerning personal safety. Be sure to observe and follow these instructions. Take time to be careful!



WARNING: BEFORE ATTEMPTING TO OPERATE THIS SPREADER, READ AND STUDY THE FOLLOWING SAFETY INFORMATION. IN ADDITION, MAKE SURE THAT EVERY INDIVIDUAL WHO OPERATES OR WORKS WITH THE SPREADER, WHETHER FAMILY MEMBER OR EMPLOYEE, IS FAMILIAR WITH THESE SAFETY PRECAUTIONS.

Require anyone who will operate this spreader to read and completely understand this Owner's Manual. Give necessary instructions!

DO NOT operate, service, inspect or otherwise handle this spreader until all operators have read this Owner's Manual and have been properly trained in the intended usage of the spreader.

Do not allow minors (children) or inexperienced persons to operate this spreader.

If the spreader becomes clogged, shut off the tractor engine and allow all mechanisms to stop. Disconnect PTO shaft and hydraulic hoses (relieve hydraulic pressure). Then, clean or work on the spreader as required.

Always shut off power and disconnect PTO drive shaft and unhook hydraulic hoses (relieve hydraulic pressure) from tractor to prevent accidental startup or unexpected movement before working on machine.

Do not clean, adjust, or lubricate while spreader is in motion.

Make sure all hydraulic fittings are tight and that all hoses are in good condition. Hydraulic fluid escaping under pressure can have sufficient force to penetrate skin and cause serious injury. Never investigate for hydraulic leaks by using a part of the body to feel for escaping fluid.

Inspect when first delivered and regularly thereafter; that all connections and bolts are tight and secure before operating.

Know how to stop the spreader before starting it!

Do not operate until all shields, covers, and guards are in place.

Make certain everyone is clear of the spreader before applying power.

Keep hands, feet and clothing away from moving parts. Loose or floppy clothing should not be worn by the operator.

Stay well clear of the spreader's rear discharge spinners while operating.

Do not step up on any part of the spreader at any time. Do not use PTO guard as a step.

Do not step over the power take-off shaft. Stay clear of the PTO at all times.

Keep PTO shaft telescoping tube shields turning freely. Keep PTO master shield on tractor. Replace shields missing or damaged.

Never operate PTO above normal 540 or 1000 RPM rating. Tractors PTO MUST match implement PTO.

Use only properly rated tires.

Do not tow at speeds in excess of 20 MPH when transporting this spreader. Never exceed a safe travel speed.

Observe all applicable traffic laws when transporting on public roadways (where legal to do so). Check local laws for all highway lighting and marking requirements.

Always install a SMV emblem on this spreader for transporting on roadways and keep the emblem clean and bright.

MEYER MFG. CORP. PROVIDES GUARDS FOR EXPOSED MOVING PARTS FOR THE OPERATOR'S PROTECTION; HOWEVER, SOME AREAS CANNOT BE GUARDED OR SHIELDED IN ORDER TO ASSURE PROPER OPERATION. THE OPERATOR'S MANUAL AND DECALS ON THE MACHINE ITSELF WARN YOU OF DANGERS AND MUST BE READ AND OBSERVED CLOSELY.

**STUDY THE ABOVE SAFETY RULES
FAILURE TO HEED MAY RESULT IN SERIOUS PERSONAL INJURY OR DEATH.**



SAFETY FIRST



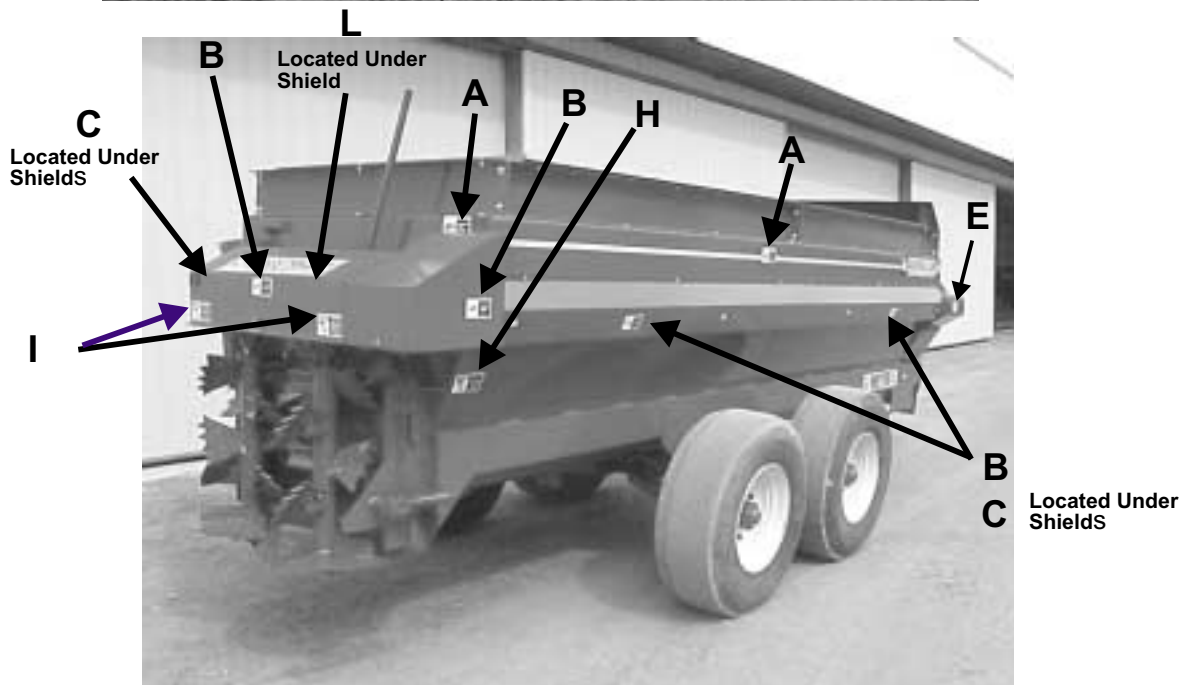
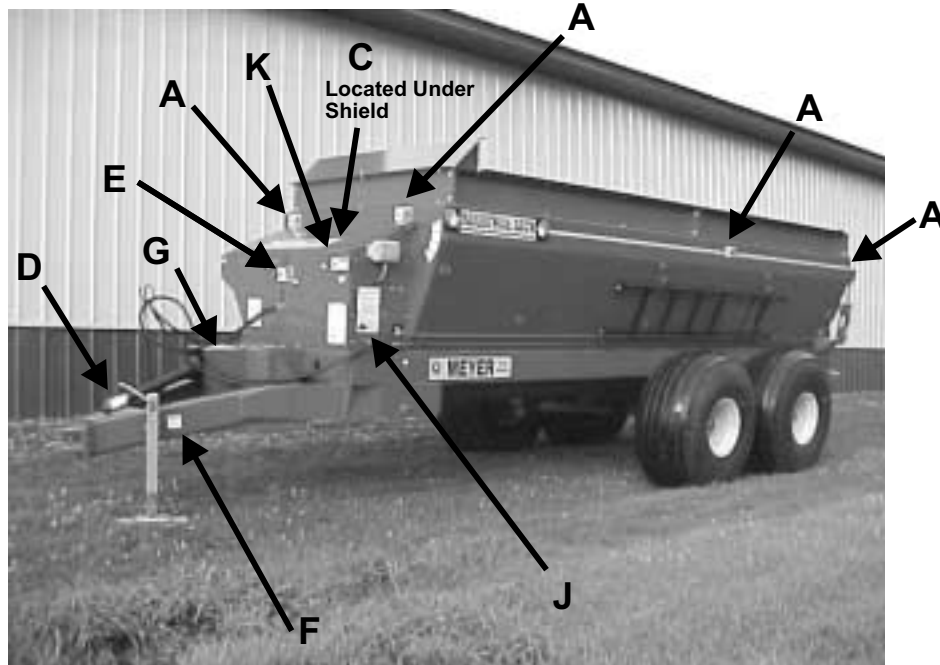
A brief definition of signal words that may be used in this manual is as follows:

DANGER Indicates an imminently hazardous situation which, if not avoided, WILL result in serious injury or death.

WARNING Indicates a potentially hazardous situ-

ation which, if not avoided, COULD result in death or serious injury, and includes hazards that are exposed when guards are removed.

CAUTION Indicates a potentially hazardous situation which, if not avoided, MAY result in minor or moderate injury. It is also used to alert against unsafe practices.



READ ALL DECALS ON THE SPREADER AND IN THIS MANUAL. KEEP THESE DECALS CLEAN AND REPLACE ANY LOST OR DESTROYED DECALS. BECOME FAMILIAR WITH ALL TRACTOR AND SPREADER CONTROLS.



SAFETY FIRST



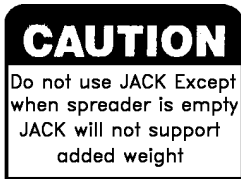
The Meyer Super Spreader is manufactured with operator safety in mind. Located on the manure spreader are various decals to aid in operation and warn of danger or caution areas. Pay close attention to all decals on the spreader.



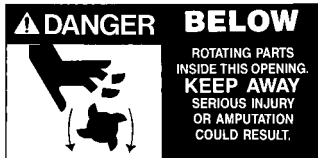
DO NOT REMOVE ANY DECALS. IF DECALS ARE LOST, DAMAGED OR IF MANURE SPREADER IS REPAINTED, REPLACE DECALS. REMEMBER: DECALS ARE FOR YOUR PROTECTION AND INFORMATION.



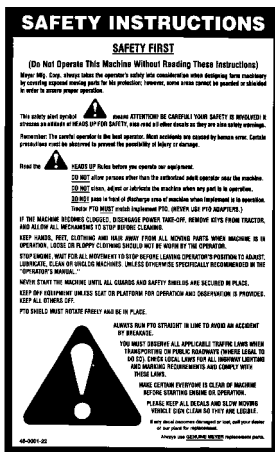
DECAL A. PART NO. 46-0001-5



DECAL F. PART NO. 46-3600-6



DECAL I. PART NO. 46-3600-1



DECAL J. PART NO. 46-0001-22



DECAL C. PART NO. 46-0001-26



DECAL D. PART NO. 46-001-13



DECAL G. PART NO. 46-004-2



DECAL B. PART NO. 46-3600-9



DECAL E. PART NO. 46-0001-4



DECAL H. PART NO. 46-3600-8



DECAL K. PART NO. 46-0001-35



DECAL L. PART NO. 46-5570-3

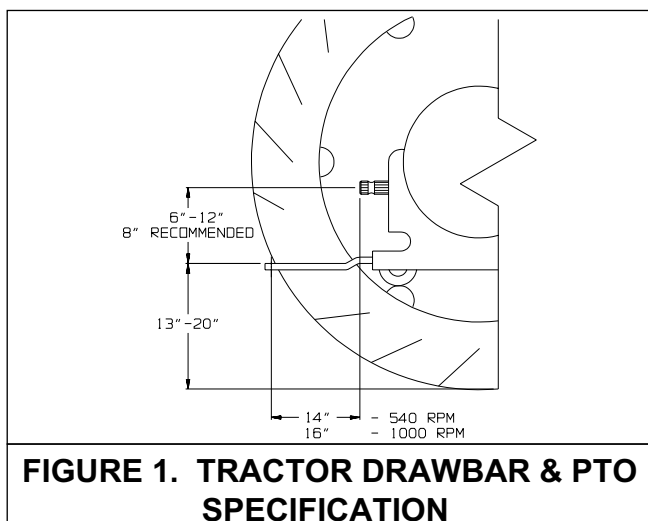
READ ALL DECALS ON THE SPREADER AND IN THIS MANUAL. KEEP THESE DECALS CLEAN AND REPLACE ANY LOST OR DESTROYED DECALS. BECOME FAMILIAR WITH ALL TRACTOR AND SPREADER CONTROLS

PRE-OPERATION

⚠ WARNING: BEFORE OPERATING, READ THIS OWNERS MANUAL COMPLETELY. PAY PARTICULAR ATTENTION TO THE “SAFETY PRECAUTION” AND “SAFETY FIRST” PAGES. READ ALL SAFETY MESSAGES HIGHLIGHTED BY “SAFETY ALERT SYMBOLS” THROUGHOUT THE MANUAL.

This spreader can be operated with 540 or 1000 RPM PTO. The hitch of the spreader is designed for a standard tractor drawbar. Adjust the drawbar at 13 to 20 inches above the ground. Extend or shorten the drawbar so horizontal distance from end of tractor PTO shaft to center of the hitch pin hole is 16 inches. Secure the drawbar so that the hitch pin hole is located directly below the PTO drive line. See figure 1 for location of standard measurements.

An improperly located hitch point may cause damage to the universal joints of the PTO drive shaft. Conforming



to the standard 16" drawbar & PTO relationship will ensure that the PTO drive shaft will not become over-extended.

⚠ DANGER: DO NOT OPERATE WITHOUT PTO GUARD ON SPREADER AND ON TRACTOR. MAINTAIN PTO DRIVE SHAFT GUARD TUBES IN OPERATING CONDITION. REPLACE THEM IF DAMAGED AND NOT TURNING FREELY. FAILURE TO HEED MAY RESULT IN SERIOUS PERSONAL INJURY OR DEATH.

⚠ WARNING: INSPECT REGULARLY THAT ALL CONNECTIONS AND BOLTS ARE TIGHT AND SECURE BEFORE OPERATING. FAILURE TO HEED MAY RESULT IN SERIOUS PERSONAL INJURY OR DEATH.

Check for proper assembly and adjustment and make sure that all bolts are tightened. Securely retighten after a few hours of operation, as bolts can loosen up on new

machinery. Check wheel lug nuts upon delivery and periodically thereafter. Lug nuts should be tightened at 250-265 ft./lbs. of torque. Check the tires and inflate to the recommended pressure (21.5Lx16.1 tires to 36 psi, 425/65x22.5 tubeless tire to 75 psi).

Inspect all adjustments on the spreader to be sure they are proper and to provide maximum performance. Lubricate the spreader completely if it is required and check the level of oil in the right rear corner gear box, and the gear grease in the expeller gear boxes.

⚠ WARNING: DO NOT OPERATE WITHOUT ALL SHIELDS, GUARDS AND COVERS INSTALLED. FAILURE TO HEED MAY RESULT IN SERIOUS PERSONAL INJURY OR DEATH.

Fasten the spreader hitch to the tractor drawbar with a hitch pin that cannot bounce out. Use a 1-1/4" to 1-3/8" diameter hitch pin to pull spreader.

Remove the weight from the jack (jack is not to be used when spreader is loaded). Remove the jack from square mount tube and move to the transport storage tube on the left front side of the frame channel. Store in a horizontal position.

Before operation and after hitching the tractor to the spreader, connect the PTO drive shaft to the tractor. Slide spring loaded locking collar on PTO yoke rearward, and slide yoke onto the tractor PTO shaft. Release spring loaded collar. Be sure pins fall into groove of tractor PTO shaft and collar snaps forward into locking position.

⚠ CAUTION: DO NOT USE A STEEL HAMMER TO AID IN JOINING PTO PARTS.

Route hydraulic hoses through the hose support rod which is mounted to the hitch frame, figure 2. Connect the hydraulic hoses for the flow control rear gate to the tractor's double acting valve hydraulic system. Move the tractor hydraulic controls to observe proper flow gate operation. If the controls operate the gate in opposite directions to what you expect, reverse the hydraulic hose connections at the tractor.

⚠️ WARNING: HYDRAULIC FLUID ESCAPING UNDER PRESSURE CAN HAVE SUFFICIENT FORCE TO PENETRATE SKIN. KEEP ALL HOSES AND CONNECTIONS IN GOOD SERVICEABLE CONDITION. FAILURE TO HEED MAY RESULT IN SERIOUS PERSONAL INJURY OR DEATH.

Before loading spreader, slowly engage the tractor PTO and operate machine at idle speed for several minutes to insure the spreader is lubricated and operating properly.

TRANSPORTING

Check that the flow control rear gate is completely closed. It is unlawful to allow slurry to splash or leak onto public roads.

⚠️ WARNING: DO NOT TOW AT SPEEDS GREATER THAN 20 MPH. FAILURE TO HEED MAY RESULT IN SERIOUS PERSONAL INJURY OR DEATH.

Operating speed is dictated by the terrain over which you are traveling. Always use caution. Avoid traveling on slopes or hills that are unsafe.

⚠️ WARNING: OBSERVE ALL APPLICABLE TRAFFIC LAWS WHEN TRANSPORTING ON PUBLIC ROADWAYS. CHECK LOCAL LAWS FOR ALL HIGHWAY LIGHTING AND MARKING REQUIREMENTS.

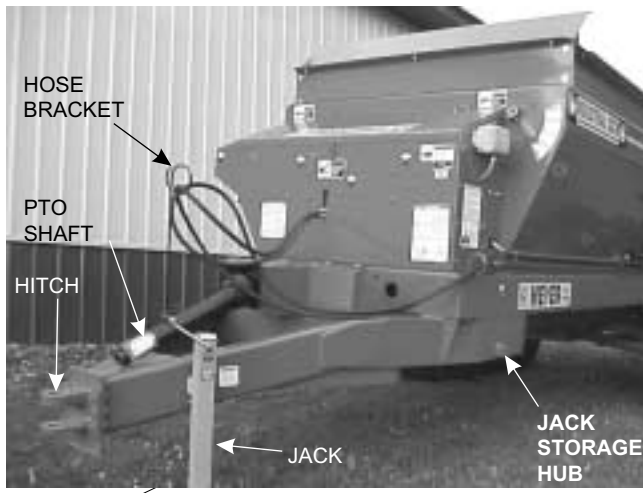


FIGURE 2. SPREADER HOOKUP

⚠️ WARNING: INSTALL A SMV EMBLEM ON REAR OF SPREADER FOR TRANSPORTING ON ROADWAYS AND KEEP THIS EMBLEM CLEAN AND BRIGHT. FAILURE TO HEED MAY RESULT IN SERIOUS PERSONAL INJURY OR DEATH.

If you will travel on public roads and it is legal to do so, you must know all rules governing such operation. This will include lighting and brake requirements in addition to traffic rules. You may also be required to install a safety chain device on the spreader.

Check for traffic constantly. Be sure you can see that no one is attempting to pass you and that all traffic is sufficiently clear from you before making any turns.

FREEZING WEATHER OPERATION

Allow spreader to completely empty last of manure contents and disengage tractor PTO. Shut off tractor, remove the ignition key and allow all movement to stop before attempting to clean the spreader.

⚠️ WARNING: DO NOT CLEAN, ADJUST OR LUBRICATE WHILE SPREADER IS IN MOTION. FAILURE TO HEED MAY RESULT IN SERIOUS PERSONAL INJURY OR DEATH.

Scrape clean any remaining manure from inside the rear of spreader. Clean all manure from ends of augers, flow control rear gate and spinners.

⚠️ WARNING: MAKE CERTAIN EVERYONE IS CLEAR OF THE SPREADER BEFORE APPLYING POWER. FAILURE TO HEED MAY RESULT IN SERIOUS PERSONAL INJURY OR DEATH.

Slowly engage the PTO. Operate the spreader several minutes to clean manure scrapings and to allow any remaining manure and the spreader to freeze dry. Hydraulically run the flow control rear gate up and down to clean gate slide guides. Park spreader with flow control rear gate approximately halfway open.

Before loading in freezing weather, make sure augers and spinners are free to rotate, and the flow control rear gate moves freely up and down.

⚠️ DANGER: KEEP AWAY AND KEEP OTHERS CLEAR OF ROTATING SPINNERS AT REAR OF SPREADER. SERIOUS INJURY OR AMPUTATION COULD RESULT. FAILURE TO HEED MAY RESULT IN PERSONAL INJURY OR DEATH.

OPERATION

LOADING

⚠ CAUTION: TO PREVENT DAMAGE TO AUGERS, SPINNERS, AND DRIVE LINES, FOREIGN OBJECTS (STONES, CONCRETE, TIMBER, METAL OR LARGE FROZEN CHUNKS OF MANURE) SHOULD NEVER BE LOADED INTO THE SPREADER.

⚠ DANGER: NEVER ENTER THE SPREADER BOX FOR ANY REASON WITHOUT FIRST DISCONNECTING PTO SHAFT FROM TRACTOR. DO NOT ALLOW OTHERS IN THE BOX. ROTATING AUGERS CAN CRUSH AND DISMEMBER. FAILURE TO HEED MAY RESULT IN SERIOUS PERSONAL INJURY OR DEATH.

⚠ CAUTION: DO NOT USE JACK EXCEPT WHEN SPREADER IS EMPTY. JACK WILL NOT SUPPORT ADDED WEIGHT. UNBALANCED WEIGHT MAY RESULT IN UNEXPECTED “TIP UP” OF SPREADER.

Before loading, especially in freezing weather, make sure the augers and spinners are free to rotate and the flow control rear gate moves freely up and down.

Check and be sure that the flow control rear gate is completely closed before loading.

When the spreader is parked for loading, shift the tractor to neutral or park and set the brakes. The moisture content of the manure will determine how full the spreader can be loaded so that no manure spills out.

You will probably be able to load solid manure at least level with the top of the box while semi-liquid and liquid manure will have to be less than full in the spreader box. It is unlawful to allow manure to splash or leak onto public roads.

A liquid manure kit is available for installation around the top of the box on your spreader which will aid in the containment of liquids.

UNLOADING

⚠ WARNING: MAKE CERTAIN EVERYONE IS CLEAR OF SPREADER BEFORE APPLYING POWER. FAILURE TO HEED MAY RESULT IN SERIOUS PERSONAL INJURY OF DEATH.

⚠ DANGER: KEEP AWAY AND KEEP OTHERS CLEAR OF ROTATING SPINNERS AT REAR OF SPREADER. SERIOUS INJURY OR AMPUTATION COULD RESULT. FAILURE TO HEED MAY RESULT IN SERIOUS PERSONAL INJURY OF DEATH.

When you are ready to begin spreading application on the field, open the hydraulic flow control rear gate and slowly engage the tractor PTO clutch. This can be done while traveling forward to avoid a heavier application of liquid manure at the edge of the field than desired.

For liquid and semi-liquid manure, the application rate can be controlled by the amount the flow control rear gate is opened. The height of the gate indicator bar above the rear edge of the box and the gate indicator on the front of the box will provide a ready reference for the amount of opening. For solid manure (dry, pen-packed or manure containing long straw or hay) the flow control rear gate MUST be completely open since this material is not free flowing.

The rear spinners have been designed and tested to provide the best spread pattern for most liquids and semi solid manure. However, the pattern will vary for each specific condition. The factors that contribute most to differing patterns will be moisture content and the



FIGURE 3. FLOW CONTROL GATE INDICATOR

amount and length of bedding material. For most typical conditions, the spread pattern should be uniform and about 15 ft. wide. When this is the case, plan your spreading patterns so you do not have to travel over previously spread manure which will be slippery, resulting in poor traction. Traction on wet grass is also poor. When the resulting pattern may require that you overlap during spreading, use precautions on slopes and hills where you could experience a loss of traction by traveling over ground with previously spread manure.

NOTE: Further control of the application rate is possible by the relationship of tractor engine speed to ground speed (transmission gear selection). For optimum, trouble-free performance it is recommended to operate at or near engine PTO speed.

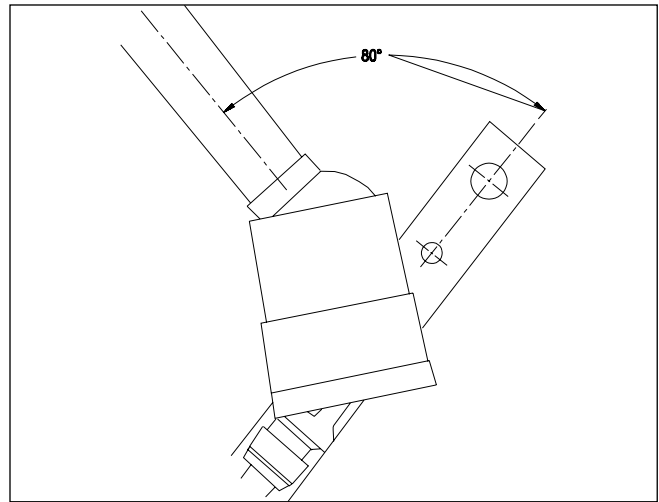
When the spreader is empty, idle the tractor and stop the PTO. Close the flow control rear gate.

⚠ WARNING: NEVER OPERATE PTO ABOVE ITS NORMAL 540 or 1000 RPM RATING. TRACTOR'S PTO MUST MATCH IMPLEMENT PTO.

NOTE: Failure to idle the tractor before disengaging the PTO will cause roller chain over-running and damage to the chain tighteners.

NOTE: Maximum life of the PTO shaft universal joints will result if you stop the PTO while making turns at the end of the field.

⚠ CAUTION: DO NOT EXCEED THE MAXIMUM 80° TURNING ANGLE ON THE CONSTANT VELOCITY PTO DRIVELINE. EXCEEDING THE TURNING ANGLE WILL DAMAGE THE CONSTANT VELOCITY "CENTER HOUSING" AND WILL EXERT EXCESSIVE PRESSURES ON THE PTO INPUT CENTER SHAFT AND RELATED BEARINGS.



STORAGE AFTER USE

⚠ WARNING: DISCONNECT PTO DRIVE SHAFT AND HYDRAULIC HOSES BEFORE CLEANING, ADJUSTING, OR SERVICING THIS MACHINE. FAILURE TO HEED MAY RESULT IN SERIOUS PERSONAL INJURY OR DEATH.

Before storing this spreader for an extended period of time perform the following:

Allow the spreader to completely clean out the last load. Thoroughly hose off all manure from the outside of the spreader and the inside of the box, particularly getting the flow control rear gate mechanism clean. The wash water can be drained into your manure storage pit, or if the gate is left closed, the water can be spread on the field. After cleaning, completely lubricate the entire spreader to exclude moisture from bearings and to prevent condensation from forming during storage. See "Lubrication" pages 15 and 16.

Oil the roller chains by running the spreader at idle speed while opening the rear gate to activate the automatic oiler system. It is also a good time to inspect all adjustments and check for parts that need repair or replacement. Performing these tasks now will guarantee that the spreader is ready for use at the beginning of the next season.

ADJUSTMENTS



WARNING: DISCONNECT PTO DRIVE SHAFT AND HYDRAULIC HOSES (RELIEVE HYDRAULIC PRESSURE) BEFORE CLEANING, ADJUSTING, LUBRICATING OR SERVICING THIS SPREADER. FAILURE TO HEED MAY RESULT IN SERIOUS PERSONAL INJURY OR DEATH.

“RUN IN”

READJUSTING THE WEASLER “MULTI DISC” PTO SLIP CLUTCH

“Run In” of the Multi Disc Clutch is necessary for all new clutches and any clutch which has not been used for approximately 30 days.

Before first use or after storage of more than one month, all spring adjusting cap screws should be loosened, the clutch slipped, discs smoked and cooled, and the clutch spring length readjusted. This procedure is to “run in” the clutch. If this is not performed, the setting of the clutch will increase by 15% after it slips enough from normal use and will alter your setting.

Tools required: 1/4” Hex Allen Wrench or hex extension for ratchet and Meyer Mfg. Corp. part number #918-0004-33 (2.170” Gauge)

4 DISC, 6 SPRINGS (1000 RPM ONLY)

Proceed as Follows:

1. Shut off the tractor and be certain the PTO is disengaged.
2. Disconnect the PTO drive line from the tractor.

NOTE: Clutch is accessible by flipping up PTO shield, figure 4.

3. Locate the six cap screws in the lock ring on the clutch. Reduce the load on the screws uniformly to avoid damaging the clutch. **Loosen the six cap screws ½ turn per screw at a time, until all screws are loosened.** DO NOT OVER LOOSEN! The six springs on the inside of the clutch canister can move out of position if the screws are loosened too much. If this should occur, reposition the springs so one spring is centered under each of the three, 3/8” access holes. Equally space the three remaining springs between the three centered springs and keep them as close to the wall of the can as possible.

Recheck and make sure all springs are pushed as close to the can wall as possible but do not contact the hub. The internal overrunning clutch must turn freely in one direction.



WARNING: STAY SEATED ON THE TRACTOR AND ALLOW NO ONE NEAR THE SPREADER WHILE PREFORMING THE FOLLOWING PROCEDURE. FAILURE TO HEED MAY RESULT IN SERIOUS PERSONAL INJURY OR DEATH.

4 DISCS, 9 SPRINGS, (540 RPM ONLY)

Proceed as Follows:

1. Shut off the tractor and be certain the PTO is disengaged.
2. Disconnect the PTO drive line from the tractor.

NOTE: Clutch is accessible by flipping up PTO shield, figure 4.

3. Locate the six cap screws in the lock ring on the clutch. Reduce the load on the screws uniformly to avoid damaging the clutch. **Loosen the six cap screws ½ turn per screw at a time, until all screws are loosened.** DO NOT OVER LOOSEN! The nine springs on the inside of the clutch canister can move out of position if the screws are loosened too much. If this should occur, reposition the springs so one spring is centered under each of the three, 3/8” access holes. Equally space the six remaining springs between the three centered springs and keep them as close to the wall of the can as possible.

Recheck and make sure all springs are pushed as close to the can wall as possible but do not contact the hub. The internal overrunning clutch must turn freely in one direction.



WARNING: STAY SEATED ON THE TRACTOR AND ALLOW NO ONE NEAR THE SPREADER WHILE PREFORMING THE FOLLOWING PROCEDURE. FAILURE TO HEED MAY RESULT IN SERIOUS PERSONAL INJURY OR DEATH.

4. Attach the drive line to the tractor PTO. Wedge a block of wood between the spinners at the rear of the spreader. **STAY CLEAR OF THE REAR OF THE SPREADER WHILE SLIPPING THE CLUTCH.** Start the tractor, engage the PTO drive line and run for a few minutes, or until the clutch visibly starts to smoke (3-5 seconds). Disengage the tractor PTO, shut off the tractor, and disconnect the PTO drive line from the tractor. Allow the clutch to cool.

5. **Retighten the six cap screws uniformly.** Tighten ½ turn per cap screw until the correct spring length is reached. The correct PTO horsepower setting on the Meyer Industrial Spreader is obtained by measuring a spring length of 2.170". Using the gauge, measure the spring length through the three, 3/8" access holes located at the rear of the clutch canister. Alternate inserting the 2.170" gauge between the three access holes while tightening the six cap screws until the head of the gauge starts to move away from the clutch canister. Recheck all three access holes with the gauge to make sure the cap screws are adjusted uniformly.

CAUTION: Be as accurate as possible. A measurement of 1/64" from the correct 2.170" spring length measurement can cause a difference of up to 15% in torque.

Loosen all six cap screws 1/4 turn and recheck to have equal spring length with the gauge through the three, 3/8" access holes. The clutch is set correctly when the gauge is inserted and the head of the gauge just makes contact with the clutch canister.

Remember to remove the block of wood from between the spinners at the rear of the spreader before operating.

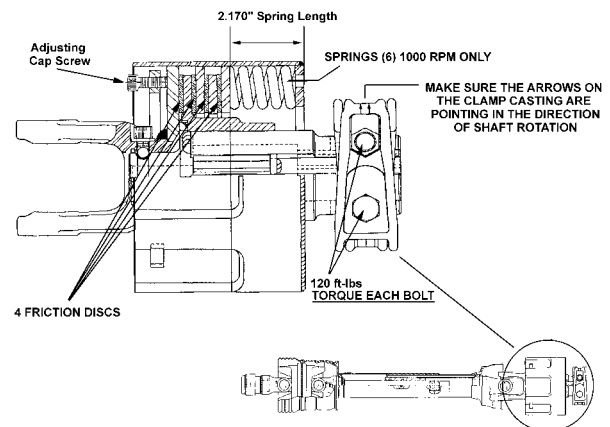
6. **IMPORTANT! Re-grease (1) integral overrunning clutch assembly at rear of the PTO drive line. See Lubrication section.**

If the clutch smokes during operation or if you observe very regular slippage, the springs require more tightening. If regular slippage is allowed to continue, the clutch will wear out.



FIGURE 4. PTO SHIELD FLIPPED UP

4 DISCS, 6 SPRINGS (1000 RPM)



4 DISCS, 9 SPRINGS (540 RPM)

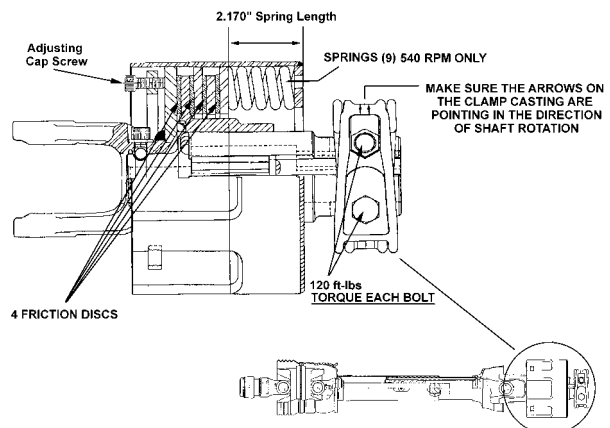


FIGURE 5. "MULTI DISC" PTO SLIP CLUTCH

ADJUSTMENTS

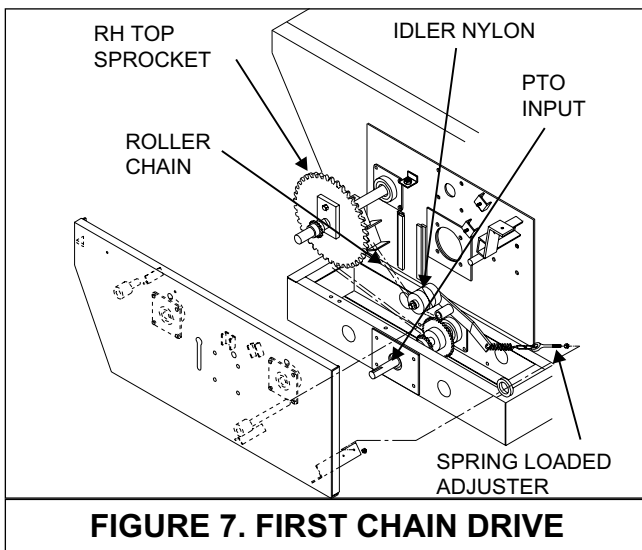


WARNING: DISCONNECT PTO DRIVE SHAFT AND HYDRAULIC HOSES (RELIEVE HYDRAULIC PRESSURE) BEFORE CLEANING, ADJUSTING, LUBRICATING OR SERVICING THIS SPREADER. FAILURE TO HEED MAY RESULT IN SERIOUS PERSONAL INJURY OR DEATH.

FRONT DRIVE ROLLER CHAINS

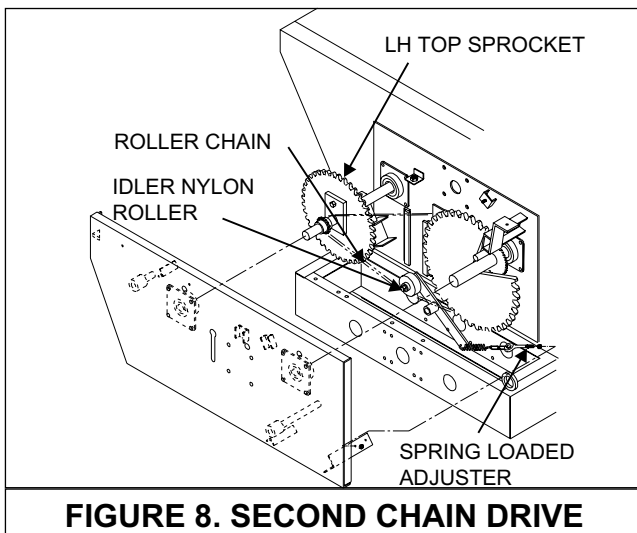
There are six roller chain drives located at the front of the spreader. Regularly check that all tensioning springs are in serviceable condition for automatic roller chain tightening. Manually adjust spring tensioners (as needed) by turning double locknuts on all tensioning bolt/idler assemblies. Proper roller chain tension is when 1/4" to 1/2" deflection occurs on the slack side of the chain or when there is about 1/16" to 1/8" gap between coils in the tightener springs. Regularly re-check all roller chain tensions. Keep all roller chains tight at all times! For clarity purposes, the following illustrations detail each roller chain reduction separately.

NOTE: The side bars of the roller chains will wear into the idler nylon rollers up to the rollers of the roller chain forming grooves. These grooves will serve as a guide when the roller chain loosens due to normal use. From this point on, after tightening, the idler nylon rollers should run for hundreds of hours without any noticeable wear.



The first chain drive (PTO input shaft to the large RH top sprocket, figure 7) is automatically tensioned by a spring loaded idler nylon roller. The extension spring should extend 3/4" from its neutral 4" total length.

Manual adjustment for the automatic tensioning idler, nylon roller assembly is located at the left rear of the spreader's front bearing mounting plate.



The second chain drive (large RH top sprocket to the large LH top sprocket, figure 8) is automatically tensioned by a spring loaded idler nylon roller. The extension spring should extend 3/4" from its neutral 4" total length.

Manual adjustment for the automatic tensioning idler, nylon roller assembly is located at the left rear of the spreader's front bearing mounting plate.

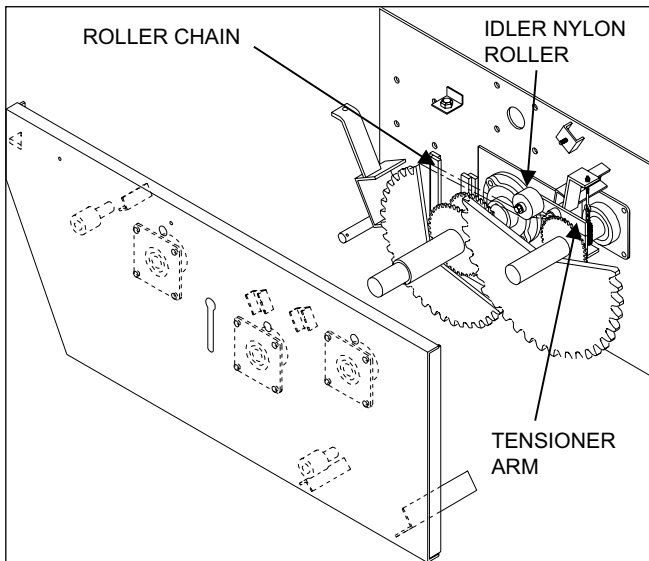


FIGURE 9 . THIRD CHAIN DRIVE

The third chain drive is automatically tensioned by a spring-loaded nylon idler roller. The extension spring should extend $3/4$ " from its neutral 4" total length. See figure 9.

Manual adjustment for the automatic tensioning idler, nylon roller assembly is located on the extended arm of the mount channel assembly.

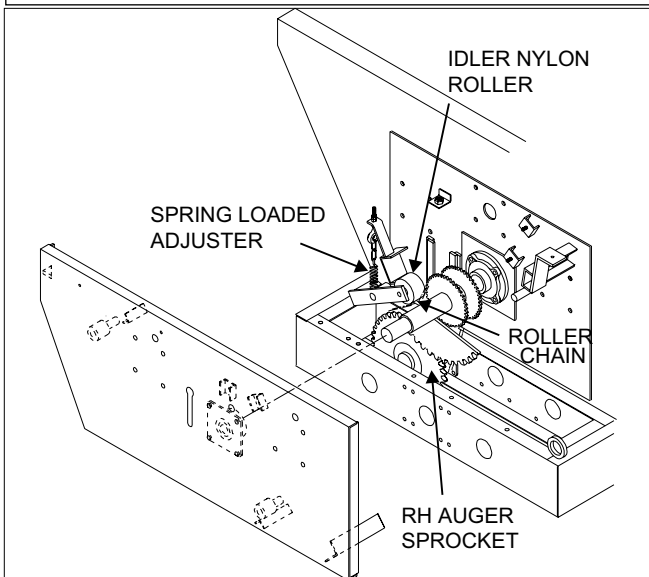


FIGURE 10. RH AUGER CHAIN DRIVE

The RH auger chain drive, figure 10, is automatically tensioned by a spring loaded idler nylon roller. The extension spring should extend $3/4$ " from its neutral 4" total length.

Manual adjustment for the automatic tensioning idler, nylon roller assembly is located at the right front lower corner of the spreader tank.

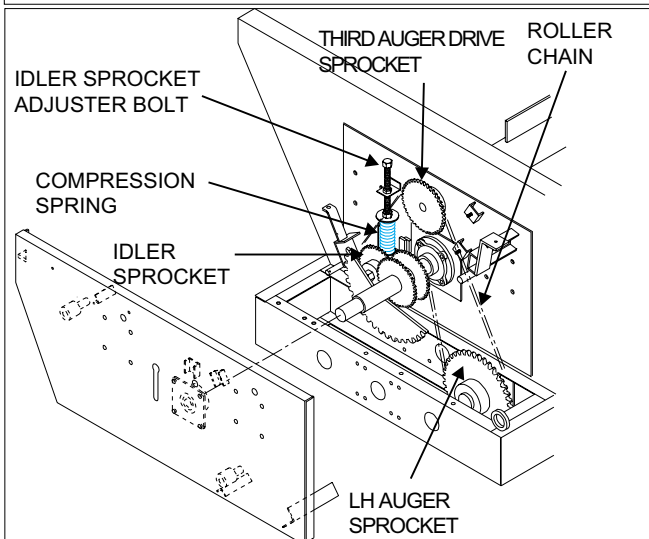


FIGURE 11. LH & THIRD AUGER CHAIN DRIVE

The LH and third auger chain drive is automatically tensioned by a spring loaded heavy compression spring and sliding idler sprocket assembly, figure 11. The heavy compression spring should be compressed to $3-1/2$ " to 4" in length.

Manual adjuster bolt for the automatic tensioning idler assembly is located at the right front upper corner of the spreader tank.

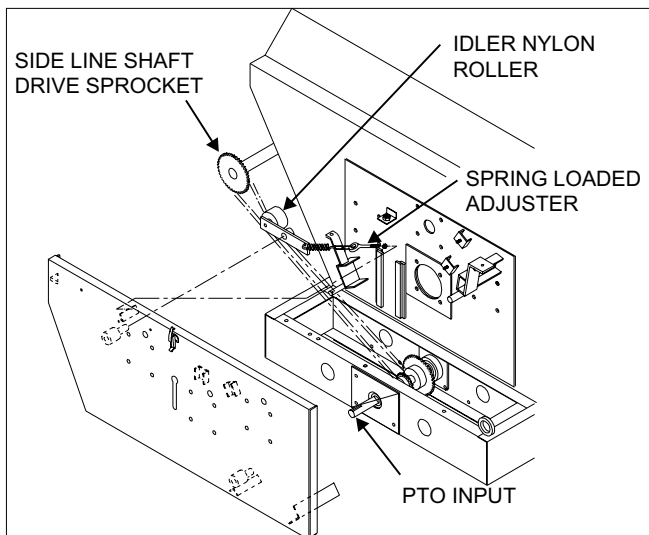


FIGURE 12. SIDE SHAFT CHAIN DRIVE

The side shaft chain drive (PTO input shaft to the side line shaft drive sprocket, figure 12) is automatically tensioned by a spring loaded idler nylon roller. The extension spring should extend $\frac{3}{4}$ " from its neutral 4" total length.

Manual adjustment for the automatic tensioning idler, nylon roller assembly is located at the right rear of the spreader's front bearing mounting plate.

SPINNER MATERIAL GUIDES

Regularly inspect and adjust two spinner material guides located at both the left rear and right rear of the spreader. Create a $\frac{1}{4}$ - $\frac{1}{2}$ " clearance between material guides and spinner teeth, figure 13. Maintain the recommended clearances for maximum spreading pattern. Adjust to prevent excessive manure build-up on material guide inner surfaces. Adjust to prevent manure chunks or foreign object lodging between material guides and spinner teeth.

NOTE: Excessive lodging can cause premature spinner tooth wear, "bent-over" or even breakage.

Adjustments for the $\frac{1}{4}$ - $\frac{1}{2}$ " clearance of each material guide to spinner tooth is made by tightening or loosening the 1" nut on the material guide spring linkage shaft assembly. Tighten nut to increase clearance and loosen nut to decrease clearance between the material guides. Once recommended clearance is obtained turn spinners over by hand in the direction by which the spreader would turn to check clearance. Do not turn in the opposite direction as front chain tightener damage could occur.

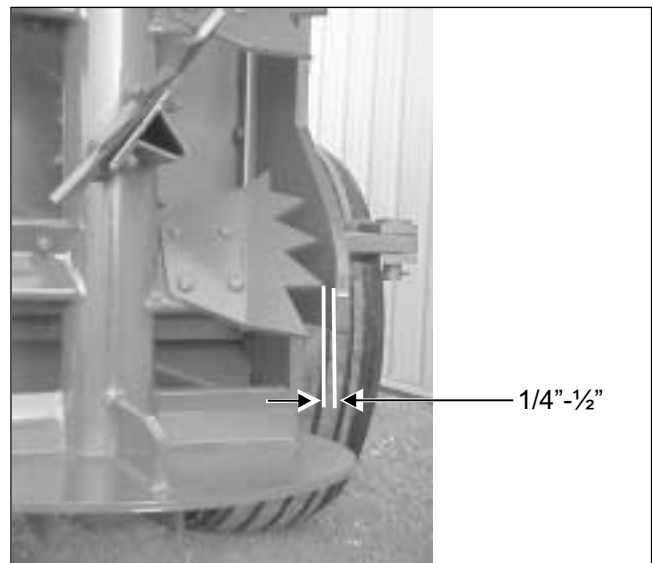


FIGURE 13. MATERIAL GUIDE CLEARANCE

LUBRICATION



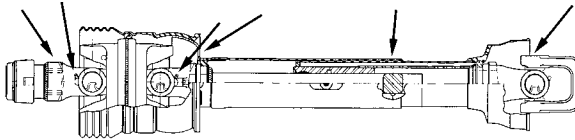
WARNING: DISCONNECT PTO DRIVE SHAFT AND HYDRAULIC HOSES (RELIEVE HYDRAULIC PRESSURE) BEFORE CLEANING, ADJUSTING, LUBRICATING OR SERVICING THIS SPREADER. FAILURE TO HEED MAY RESULT IN SERIOUS PERSONAL INJURY OR DEATH.

DAILY LUBRICATION (every 8-12 loads)

(L1) Grease (2) rear spinner lower bearings. These bearings are grease line fitted to the LR frame channel of the spreader.

(L2) Oil (6) roller chain drives with automatic oiler at the front of spreader with clean 30 weight oil. The roller chains are accessible by opening the front steel shielding cover.

(L3) Grease PTO Drive line (6) places with Moly grease every 8 hours.



(L4) Grease (7) bearings supporting the three large jack shaft reduction sprocket weldments, and the third auger drive shaft on the front drive. The zerks are accessible by opening the front steel shielding cover and through the access holes in front plate. Be careful not to over grease.

(L5) Grease (2) auger shaft bearings. These bearings are grease line fitted to the LF and RF frame channels of the spreader. Over greasing is not possible.

IMPORTANT: Check regularly for any observable lubricant leakage of the (3) gearboxes at the rear of the spreader. See L12 & L14 under *Monthly Lubrication*

WEEKLY LUBRICATION (every 25-30 loads)

(L6) Grease (2) PTO input shaft bearings. These bearings are grease line fitted to the RF frame channel of the spreader.

(L7)

Grease (5) bearings on the RH side line shaft. The front bearing is zerk accessible through the RF steel shielding. The remaining rear bearings are located along the RH side of the spreader tank, zerks accessible through the steel shielding.

(L8)

Grease (6) tandem wing pivots. Effectively grease by jacking up the spreader to relieve pressure points on the pivot shaft and tandem wing collar. Over greasing is not possible.

(L9)

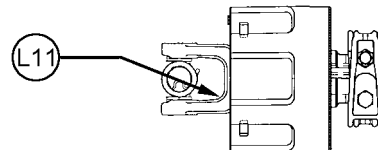
Grease (2) flow control rear gate and lifting arm pivot points. Grease gate pivot at center of flow control rear gate. Grease lifting arm pivot support at LR of spreader. Over greasing is not possible. Apply grease to slot in gate lift arm.

(L10)

Grease (2) flow control rear gate slide guides. With the flow control rear gate opened, grease the slide guides from top side. Allow grease to lubricate flow control rear gate ends and slide guide surfaces. In freezing weather dump used motor oil down each slide guide once a week or more often if needed. Over greasing is not possible.

(L11)

Grease (1) integral overrunning clutch at rear of the PTO drive line. The zerk is on the yoke of the friction slip clutch. Use Shell Super Duty or an equivalent lithium grease. Be careful not to over grease.



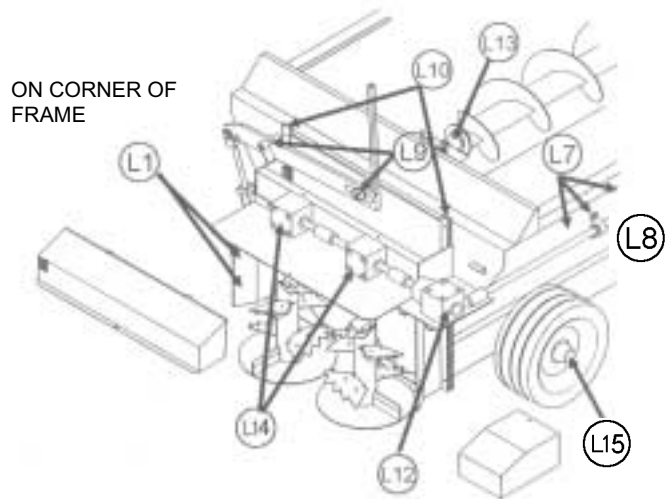
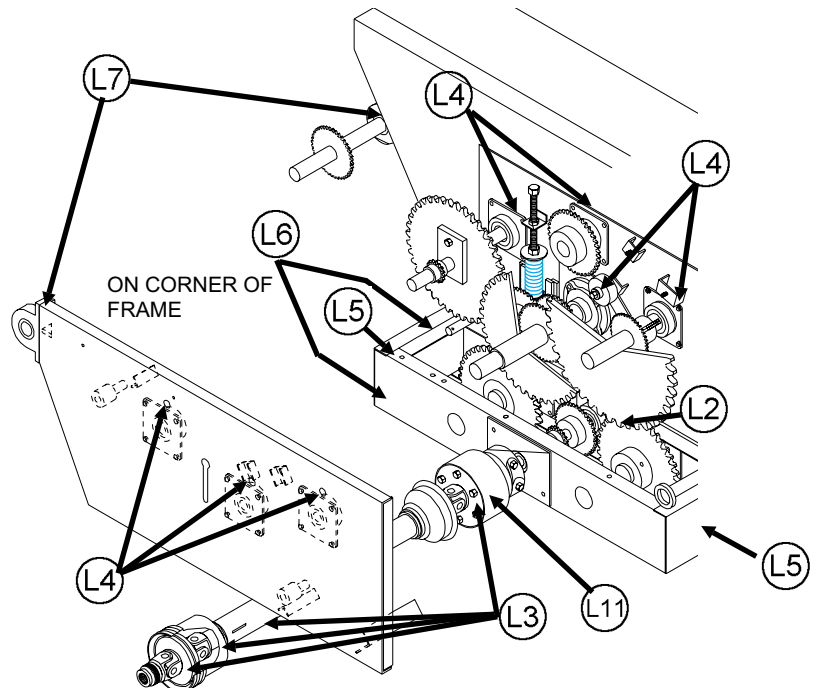
MONTHLY LUBRICATION

L12 Maintain oil level in the corner gearbox at the centerline of the input shafts. Check regularly for any observable oil leakage. If oil leakage is excessive, replace required input/output shaft oil seals. Use ONLY EP #80-90 wt. gear lube oil or an equivalent in corner box, only Lighter weight gear lube oil may be used in temperatures lower than 20°F. Change oil in the gearboxes after the first season of use and regularly thereafter.

L13 Grease (1) brass bushing supporting the rear shaft of the 3rd auger assembly. This zerk is located inside the rear spreader tank above the 3rd auger mounting bracket assembly.

L14 Maintain the lube level in the (2) spinner gearboxes at 3/4 full. Check regularly for any observable leakage. If leakage is excessive, replace required input/output shaft seals. Lubricate with Semi-Fluid, EP Lithium Base, Gear Grease.

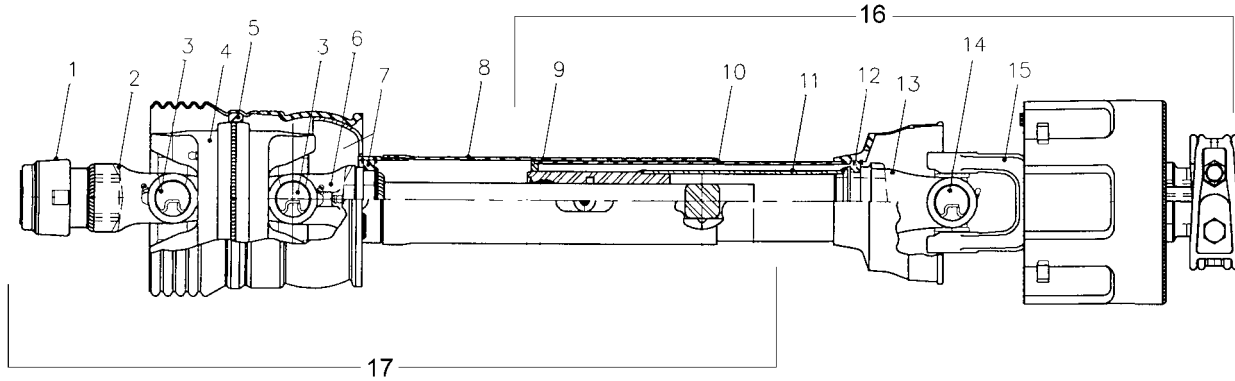
L15 Clean and repack the wheel hubs with axle grease annually.



(SHIELDS REMOVED FOR ILLUSTRATIVE PURPOSES ONLY.)

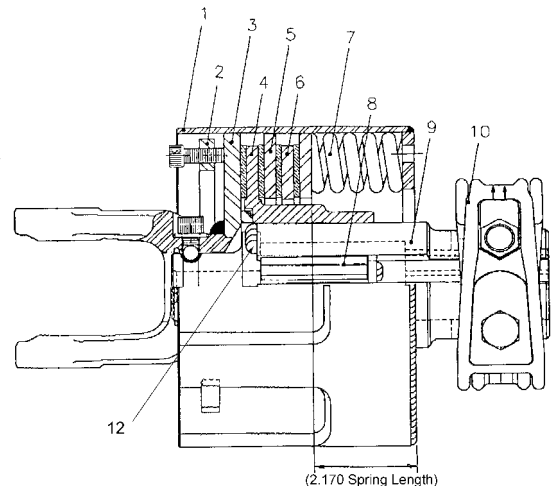
REPAIR PARTS

918-0004 PTO DRIVE SHAFT ASSEMBLY 35R (CAT 4 80° C.V., 540 RPM)



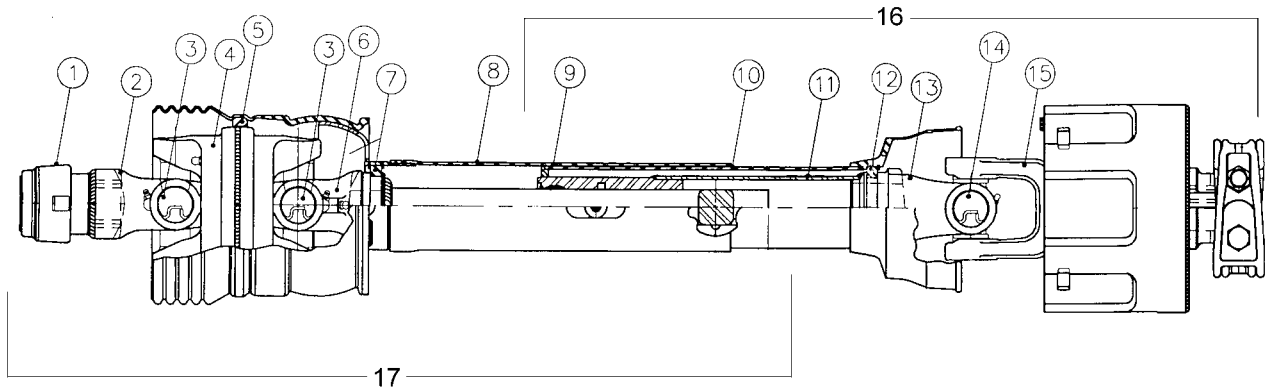
KEY	MEYER PART NO.	OEM PART NO.	DESCRIPTION
	918-0004	244-17880ASBL	Assembly Complete
1	918-0001-11	26-15120	Slide Lock Yoke, Lock Repair Kit
1A	918-0001-12	24-10013	Slide Lock Yoke, Lock Retaining Ring
1B	918-0001-13	23-10012	Slide Lock Yoke, Lock Spring
1C	918-0001-14	06-10011	Slide Lock Yoke, Lock Collar
1D	918-0001-15	33-10014	Slide Lock Yoke, Lock Pawl
2	918-0004-10	35181-1895	Slide Lock Yoke (540 RPM)
3	918-0004-7	03-14519	CAT 4 Cross & Bearing Kit
4	918-0004-30	26-10190	Center Housing
5	918-0004-31	36-13435	Bell Extension w/Nylon Centralizer
6	918-0004-4	99-17880	Yoke & Shaft
7	918-0004-8	19-11104	Nylon Repair Kit
8	918-0001-22	13-10021	Outer Safety Decal (<i>not illustrated</i>)
9	918-0004-6	97-17880	Outer Guard
10	918-0004-5	96-17880	Inner Guard
11	918-0001-23	13-10022	Inner Safety Decal (<i>not illustrated</i>)
12	918-0004-9	19-11105	Nylon Repair Kit
13	918-0004-2	98-17880	Yoke, Tube & Slip Sleeve
14	918-0001-7	03-10045	35R Cross & Bearing Kit
15	918-0004-16	38-10054	Multi-Disc Friction OR-Clutch
16	918-0004-1	92-17880	Joint & Tube Half Asm. w/Guard (Spreader Half)
17	918-0004-3	93-17880	Joint & Shft Asm. w/Guard (Tractor Half, 540 RPM)

KEY	MEYER PART NO.	OEM PART NO.	DESCRIPTION
	918-0004-16	38-10054	Multi-Disc Friction OR-Clutch
1	918-0004-17	26-11585	Housing Assembly
2	918-0004-18	20-12337	Lock Ring
3	918-0004-19	26-13076	Yoke & Plate
4	918-0004-20	06-12346	Overrunning Friction Clutch Outer Hub
5	918-0004-21	20-12341	Plate, Outer Engaged
6	918-0004-22	20-12342	Plate, Inner Engaged
7	918-0004-23	19-44421	Friction Disc Repair Kit
	918-0004-24	11-11167	Disc
	918-0004-25	23-10111	Spring
	918-0004-26	11-13429	Bolt, 5/16-18x.875" LG SHCS
8	918-0004-27	19-44411	Overrunning Clutch Repair Kit
9	918-0004-28	38-30004	Inner Drive Hub & Extension
10	918-0004-29	06-13492	*Clamp Hub
11	918-0004-33		2.170" Gauge
12	918-0004-32	11-12345	Seal Face



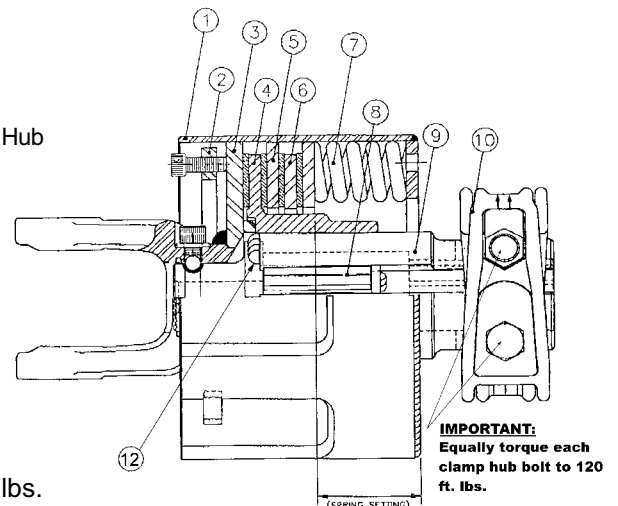
***IMPORTANT:** Equally torque each clamp hub bolt to 120 ft. lbs.

918-0006 PTO DRIVE SHAFT ASSEMBLY 35R (CAT 4 80° C.V., 1000 RPM)



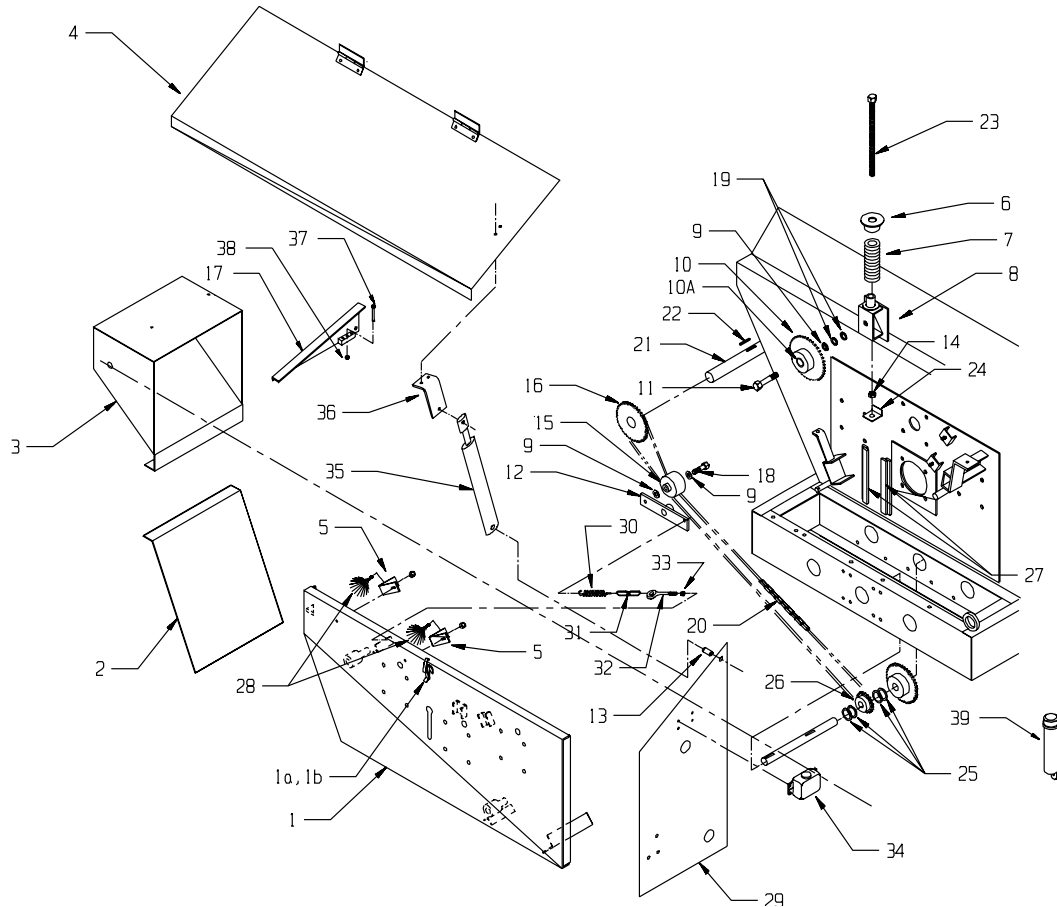
KEY	MEYER PART NO.	OEM PART NO.	DESCRIPTION
1	918-0001-11	26-15120	Slide Lock Yoke, Lock Repair Kit
1A	918-0001-12	24-10013	Slide Lock Yoke, Lock Retaining Ring
1B	918-0001-13	23-10012	Slide Lock Yoke, Lock Spring
1C	918-0001-14	06-10011	Slide Lock Yoke, Lock Collar
1D	918-0001-15	33-10014	Slide Lock Yoke, Lock Pawl
2	918-0006-10	35181-2318	Slide Lock Yoke, 1-3/8" Bore, 21 Spline (Standard)
	918-0006-10-SP	35181-2281	Slide Lock Yoke, 1-3/4" Bore, 20 Spline (Optional)
3	918-0004-7	03-14519	CAT 4 Cross & Bearing Kit
4	918-0004-30	26-10190	Center Housing
5	918-0004-31	36-13435	Bell Extension w/Nylon Centralizer
6	918-0004-4	99-17880	Yoke & Shaft
7	918-0004-8	19-11104	Nylon Repair Kit
8	918-0001-22	13-10021	Outer Safety Decal (not illustrated)
9	918-0004-6	97-17880	Outer Guard
10	918-0004-5	96-17880	Inner Guard
11	918-0001-23	13-10022	Inner Safety Decal (not illustrated)
12	918-0004-9	19-11105	Nylon Repair Kit
13	918-0004-2	98-17880	Yoke, Tube & Slip Sleeve
14	918-0001-7	03-10045	35R Cross & Bearing Kit
15	918-0006-16	38-10063	Multi-Disc Friction OR-Clutch
16	918-0006-1	92-17880	Joint & Tube Half Asm w/Guard (Spreader Half)
17	918-0006-3	93-18367	Joint & Shft Asm w/Guard (Tractor Half, 1000 RPM)

KEY	MEYER PART NO.	OEM PART NO.	DESCRIPTION
	918-0006-16	38-10063	Multi-Disc Friction OR-Clutch
1	918-0004-17	26-11585	Housing Assembly
2	918-0004-18	20-12337	Lock Ring
3	918-0004-19	26-13076	Yoke & Plate
4	918-0004-20	06-12346	Overrunning Friction Clutch Outer Hub
5	918-0004-21	20-12341	Plate, Outer Engaged
6	918-0004-22	20-12342	Plate, Inner Engaged
7	918-0004-23	19-44421	Friction Disc Repair Kit
	918-0004-24	11-11167	Disc
	918-0004-25	23-10111	Spring - Qty 6 per Clutch
	918-0004-26	11-13429	Bolt, 5/16-18 x .875" LG SHCS
8	918-0004-27	19-44411	Overrunning Clutch Repair Kit
9	918-0004-28	38-30004	Inner Drive Hub & Extension
10	918-0004-29	06-13492	*Clamp Hub
11	918-0004-33		2.170" Gauge
12	918-0004-32	11-12345	Seal Face



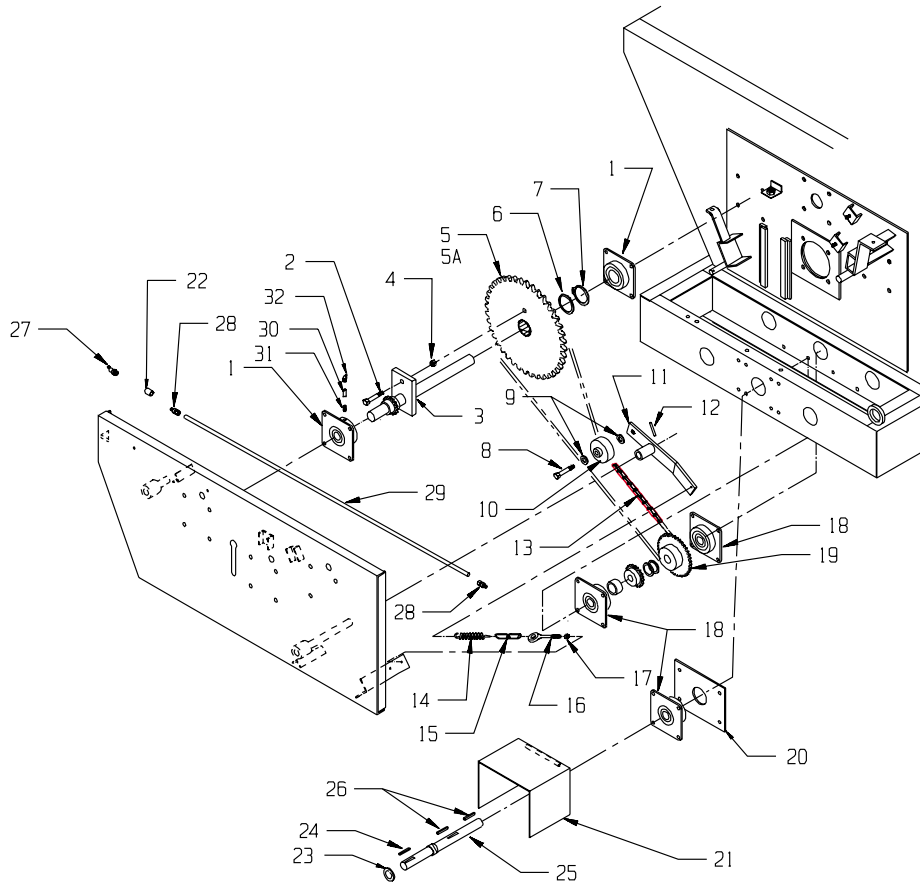
***IMPORTANT:** Equally torque each clamp hub bolt to 120 ft. lbs.

FRONT SHIELD & SIDE SHAFT DRIVE



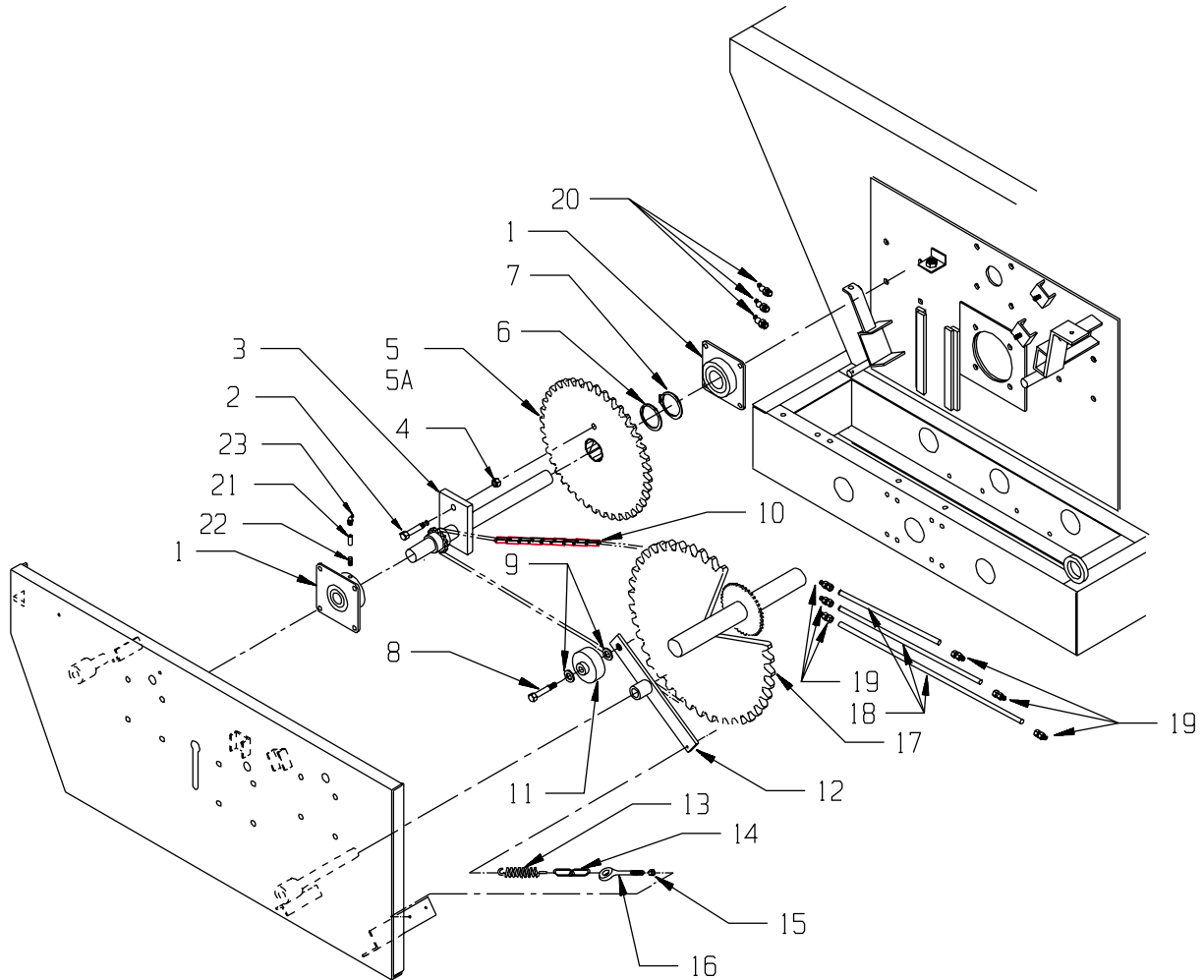
KEY	PART NO.	DESCRIPTION	KEY	PART NO.	DESCRIPTION
1	925-3703	Front Bearing Plate Assembly	18	851-7510-3.5Z	3/4-10 x 3-1/2" Machine Bolt Zinc
1A	32-0018-1	Heavy Duty Latch	19	805-0075-Z	3/4" Flat Washer Zinc
1B	32-0018-2	Keeper Latch	20	911-0039-D	#80-107 Pitch Chain
2	925-3706	Right Hand Front Support	21	923-3705	1-1/2" Front Side Shaft
3	924-3701	Right Front Shield Assembly	22	35-0010	3/8 x 3/8 x 1-1/2" Square Key
4	924-3702	Front Top Cover W/Hinges & Latches	23	925-3732	#140 Chain Tightener Bolt Assembly
5	952-0001-3	Oil Brush Holder	24	925-3731	#140 Chain Tightener Adjust-Angle
6	925-3841	Outer Spring Tightener Guide	25	808-150-300-10	10 Ga. X 1.5 I.D. x 3 O.D. Machine Bushing
7	29-0009	Compression Spring	26	910-0036	80B24 Sprocket 1-1/2" Bore, 3/8" Keyway
8	925-3719	#140 Tightener Bracket Assembly	27	901-3701-36	#140 Chain Tightener Slide Weldment
9	808-.75-1.25-14	3/4"ID x 1-1/4"OD Machine Bushing 14 Ga.	28	952-0001-1-25	Oiler Brush Assembly
10	912-0008	#140 Reverse Idler Assembly W/Bearings	29	925-3704	Left Hand Side Support Plate
10A	910-0006-1	Bearing 3/4" ID x 2" OD (2-Required)	30	929-3601	Extension Spring
11	925-3719-4	3/4-10 x 3-1/2" Machine Bolt Lathed	31	925-3822-6	2-Chain Link For Tightener
12	925-3718	Side Shaft Tightener Arm	32	933-3804	Eyebolt, 5/16 x 5" / 4" Thread Length
13	924-3702-3	Gas Shock Spacer/Hinge Sleeve	33	813-3118-Z	5/16" Regular Nut
14	933-3621	3/4-10 Jam Nut	34	952-0001-1-18	Oil Reservoir Two Quart Tank
15	912-0013	2" Nylon Roller Complete	35	955-3703	Front Cover Gas Lift Assist Spring
15A	912-0013-1	2" Nylon Roller Only	36	925-3734	Cover Spring Mount Bracket
15B	912-0013-2	Inner Sleeve	37	851-2520-2Z	1/4-20 x 2" Grade 5 Shear Bolt
16	910-0015	80B18 Sprocket 1-1/2" Bore, 3/8" Keyway	38	815-2520-Z	1/4-20 Nylon Insert Locknut
17	925-3705	Right Hand Top Side Support	39	33-0044	Manual Holder W/Caps

AUGER DRIVE FIRST REDUCTION



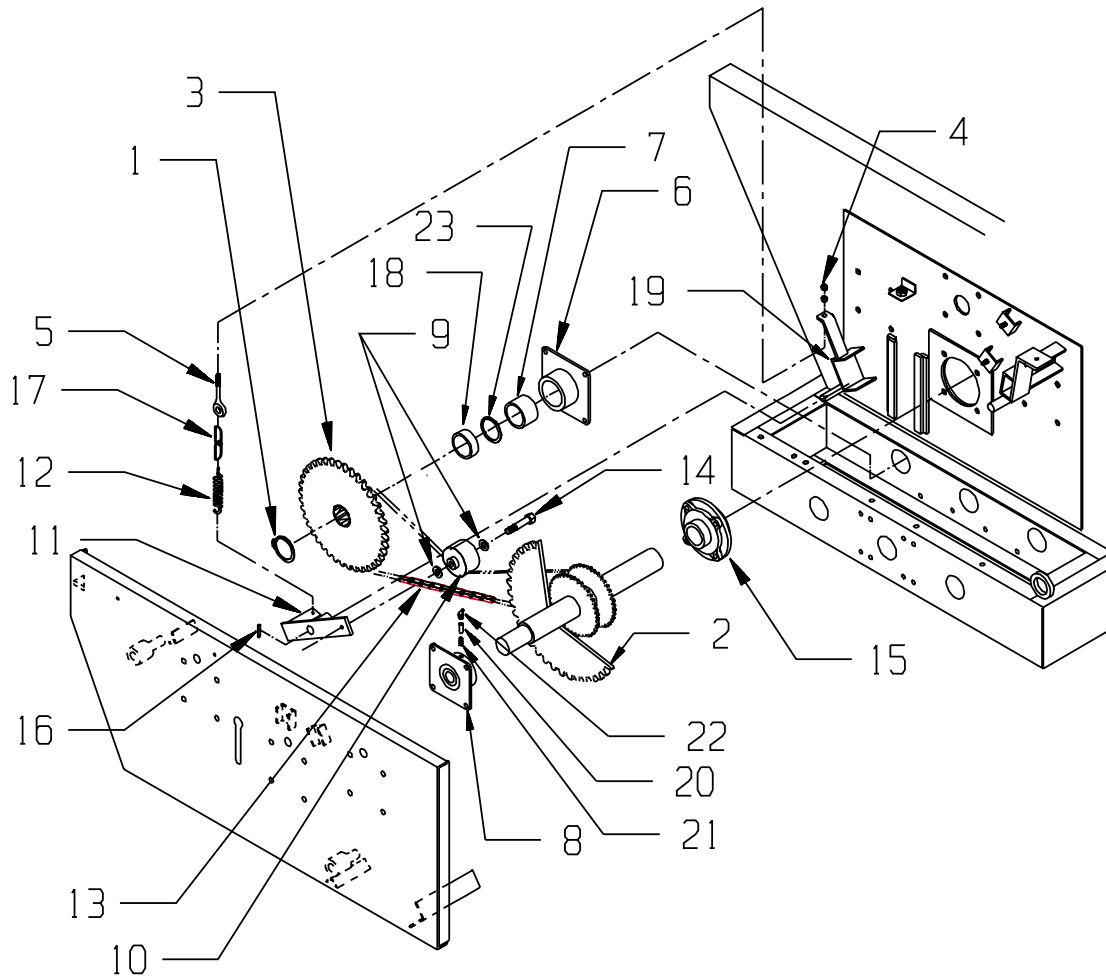
KEY	PART NO.	DESCRIPTION	KEY	PART NO.	DESCRIPTION
1	14-0031	2" Bearing 4-Bolt	18	914-3602	1-1/2" Bearing, 4-Bolt
2	851-2520-2Z	1/4-20 x 2" Grade 5 Shear Bolt	19	910-0033	80B15 Sprocket 1-1/2" Bore, 3/8" Keyway 8.5 RPM Auger Speed
3	910-0058	2" Shear Sprocket Weldment		910-0015	80B18 Sprocket 1-1/2" Bore, 3/8" Keyway 10 RPM Auger Speed
4	815-2520-Z	1/4-20 Nylon Insert Locknut		910-0039	80B22 Sprocket 1-1/2" Bore, 3/8" Keyway 12 RPM Auger Speed (Standard)
5	910-0054	Shear Sprocket Assembly (1000 RPM)		910-0067	80B30 Sprocket 1-1/2" Bore, 3/8" Keyway 17 RPM Auger Speed
	910-0066	Shear Sprocket Assembly (540 RPM)	20	925-3601	Front Bearing Plate
5A	913-3602-2	2" I.D. x 2-1/4" O.D. x 2" Bronze Bushing	21	931-3810	CV/OR PTO Shield Assembly
6	808-2-3-14	2" I.D. x 3" O.D. x 14 Ga. Machine Bushing	22	30-0009	1/8" NPT Coupler
7	933-3702	2" Retaining Ring	23	808-1.5-2.25-10	1-1/2" ID x 2-1/4" OD Machine Bushing
8	851-7510-2Z	3/4-10 x 2" Machine Bolt	24	35-0015	3/8 x 3/8 x 3" Square Key
9	808-.75-1.25-14	3/4" I.D. x 1-1/4" O.D. Machine Bushing 14 Ga.	25	923-3706	1-1/2" Input Drive Shaft
10	912-0015	1-3/8" Nylon Roller Complete	26	35-0010	3/8 x 3/8 x 1-1/2" Square Key
10A	912-0015-1	1-3/8" Nylon Roller Only	27	30-0002	1/8" NPT Straight Zerk
10B	912-0015-2	Inner Sleeve	28	930-3602	Male Connector Brass Compression Fitting
11	925-3717	Tightener Arm Assembly (1000 RPM)	29	735-.25CT	1/4" Copper Tube Grease Line (By The Foot)
	925-3739	Tightener Arm Assembly (540 RPM)	30	30-0009	1/8" NPT Coupler
12	38-0013	5/16 x 1-3/4" Roll Pin	31	30-0016	1/8" NPT Close Nipple
13	911-0040-D	#80-90 Pitch Chain (1000 RPM)	32	30-0006	1/8" NPT x 90 Degree Zerk
	911-0046-D	#80-76 Pitch Chain (540 RPM)			
14	929-3601	Extension Spring			
15	925-3822-6	2-Chain Link For Tightener			
16	933-3804	Eyebolt, 5/16 x 5" / 4" Thread Length			
17	813-3118-Z	5/16" Regular Nut			

AUGER DRIVE SECOND REDUCTION



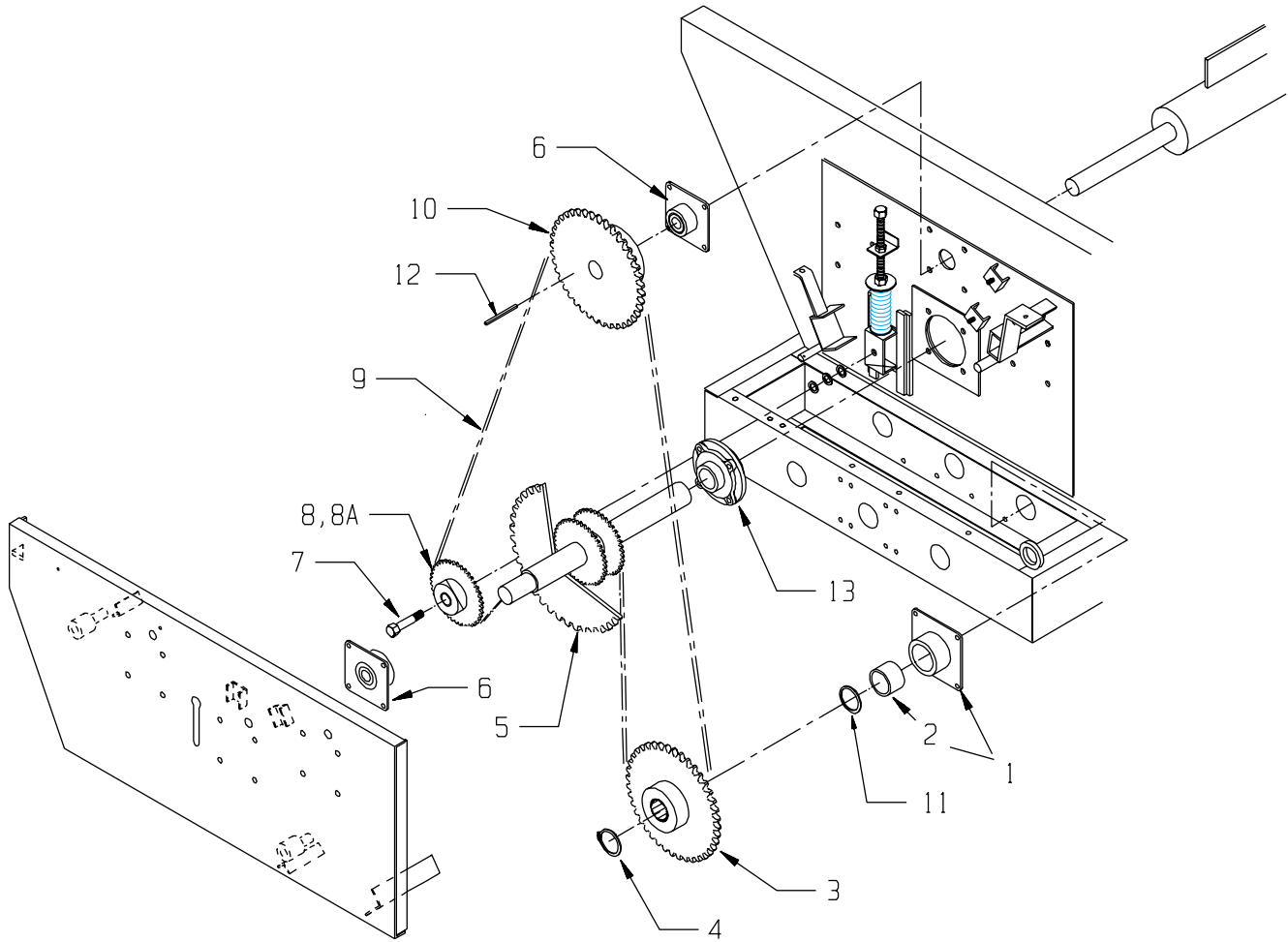
KEY	PART NO.	DESCRIPTION	KEY	PART NO.	DESCRIPTION
1	14-0031	2" Bearing 4-Bolt	16	933-3804	Eyebolt, 5/16 x 5" / 4" Thread Length
2	851-2520-2Z	1/4-20 x 2" Grade 5 Shear Bolt	17	910-0056-HD	Second Reduction Sprocket Weldment
3	910-0058	2" Shear Sprocket Weldment	18	735-.25CT	1/4" Copper Tube Grease Line (By The Foot)
4	815-2520-Z	1/4-20 Nylon Insert Locknut	19	930-3602	Male Connector Brass Compression Fitting
5	910-0054	Shear Sprocket Assembly (1000 RPM)	20	30-0002	1/8" NPT Straight Zerk
	910-0066	Shear Sprocket Assembly (540 RPM)	21	30-0009	1/8" NPT Coupler
5A	913-3602-2	2" I.D. x 2-1/4" O.D. x 2" Bronze Bushing	22	30-0016	1/8" NPT Close Nipple
6	808-2-3-14	2" I.D. x 3" O.D. x 14 Ga. Machine Bushing	23	30-0006	1/8" NPT x 90 Degree Zerk
7	933-3702	2" Retaining Ring			
8	851-7510-3Z	3/4-10 x 3" Machine Bolt Zinc			
9	808-.75-1.25-14	3/4"ID x 1-1/4"OD Machine Bushing 14 Ga.			
10	911-0041-D	#80-91 Pitch Chain			
11	912-0013	2" Nylon Roller Complete			
11A	912-0013-1	2" Nylon Roller Only			
11B	912-0013-2	Inner Sleeve			
12	925-3720	Second Reduction Tightener Arm Assembly			
13	929-3601	Extension Spring			
14	925-3822-6	2-Chain Link For Tightener			
15	813-3118-Z	5/16" Regular Nut			

RH AUGER DRIVE FINAL REDUCTION



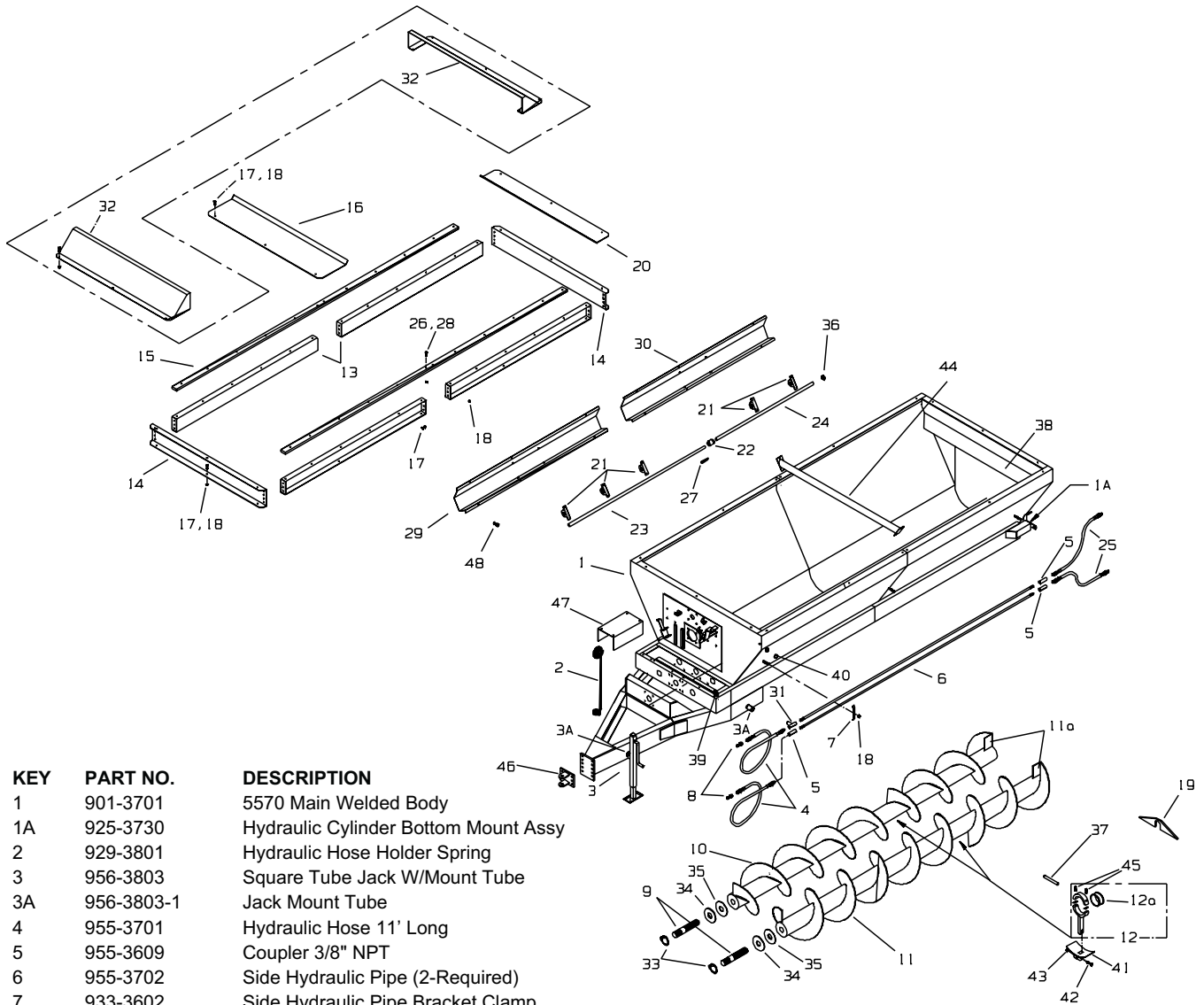
KEY	PART NO.	DESCRIPTION	KEY	PART NO.	DESCRIPTION
1	933-3701	3" Retaining Ring	19	925-3711	#140 Right Auger Chain Tightener Channel Assy.
2	910-0057	2-1/2" Auger Drive Sprocket Weldment	20	30-0009	1/8" NPT Coupler
3	910-0055	140B28 Splined Auger Drive Sprocket	21	30-0016	1/8" NPT Close Nipple
4	813-3118-Z	5/16" Regular Nut	22	30-0006	1/8" x 90 Degree Zerk
5	933-3804	Eyebolt, 5/16 x 5" / 4" Thread Length	23	933-3704	Front Auger Washer Steel
6	925-3701	Right/Left Auger Bearing Assy. W/Bushing			
7	913-3701	Auger Bushing 3"ID x 4"OD x 3-3/8" Long			
8	14-0031	2" Bearing 4-Bolt			
9	808-.75-1.25-14	3/4"ID x 1-1/4"OD Machine Bushing 14 Ga.			
10	912-0015	1-3/8" Nylon Roller Complete			
10A	912-0015-1	1-3/8" Nylon Roller Only			
10B	912-0015-2	Inner Sleeve			
11	925-3716	#140 Right Auger Chain Tightener Bracket			
12	929-3601	Extension Spring			
13	911-0044-D	#140-42 Pitch Chain			
14	851-7510-2Z	3/4-10 x 2" Machine Bolt Zinc			
15	914-3807A	2-1/2" Round 4-Bolt Bearing			
16	38-0013	5/16" x 1-3/4" Roll Pin			
17	925-3822-6	2-Chain Link For Tightener			
18	933-3710	Auger Sprocket Spacer 3.031ID x 4OD x 1"			

LH AUGER DRIVE FINAL REDUCTION



KEY	PART NO.	DESCRIPTION
1	925-3701	Right/Left Auger Bearing Assy. W/Bushing
2	913-3701	Auger Bushing 3"ID x 4"OD x 3-3/8" Long
3	910-0055	140B28 Splined Auger Drive Sprocket
4	933-3701	3" Retaining Ring
5	910-0057	2-1/2" Auger Drive Sprocket Weldment
6	14-0031	2" Bearing 4-Bolt
7	851-7510-3.5Z	3/4-10 x 3-1/2" Machine Bolt
8	912-0008	#140 Reverse Idler Assembly W/Bearings
8A	910-0006-1	Bearing 3/4" ID x 2" OD (2-Required)
9	911-0043-D	#140-70 Pitch Chain
10	910-0061	140B16 Sprocket 2" Bore, 1/2" Keyway
11	933-3704	Front Auger Washer Steel
12	35-0024	1/2 x 1/2 x 2-1/2" Square Key
13	914-3807A	2-1/2" Round 4-Bolt Bearing

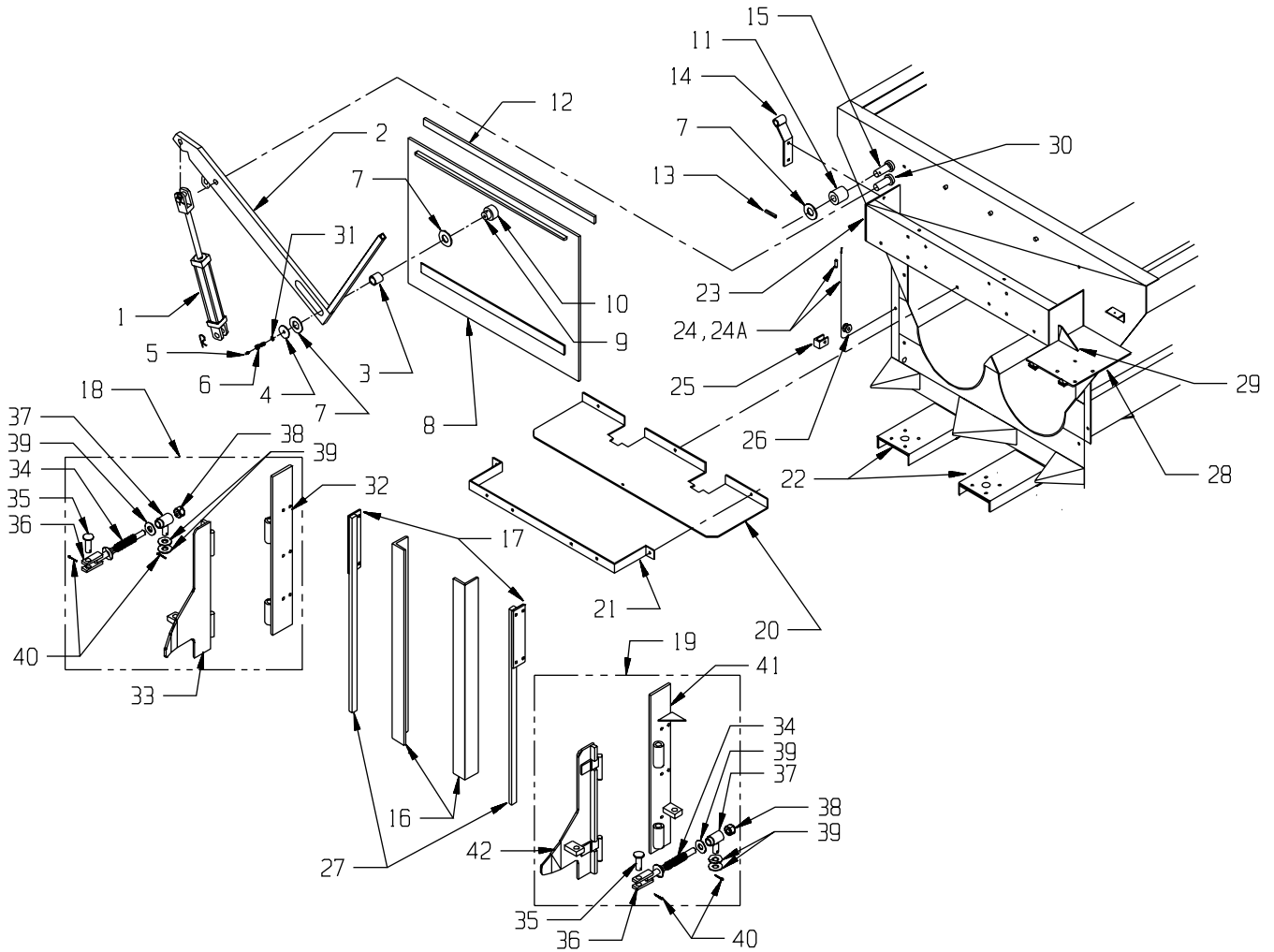
BOX, AUGERS & SIDE SHAFT



KEY	PART NO.	DESCRIPTION
1	901-3701	5570 Main Welded Body
1A	925-3730	Hydraulic Cylinder Bottom Mount Assy
2	929-3801	Hydraulic Hose Holder Spring
3	956-3803	Square Tube Jack W/Mount Tube
3A	956-3803-1	Jack Mount Tube
4	955-3701	Hydraulic Hose 11' Long
5	955-3609	Coupler 3/8" NPT
6	955-3702	Side Hydraulic Pipe (2-Required)
7	933-3602	Side Hydraulic Pipe Bracket Clamp
8	55-0013	Pioneer Coupler Male Tip
9	926-3701-1	Splined Auger Shaft, 23T, 3" Diameter
10	926-3702	Right Side Auger
11	926-3701	Left Side Auger
11A	926-3801-8	Rear Auger Flighting Support Gusset
12	901-3887	Auger Hold Down Weldment W/Bearings
12A	901-3840-1	Nylon Bearing (2-Per Auger)
13	901-3816-22	9" Extension Side Rail
14	901-3816-30	Extension End rail
15	706-1X3-16.25	Poly Board Top Rail
16	901-3830-1	Flat Front Splash Guard, Optional
17	851-5013-1.25Z	1/2"-13 x 1-1/4" Machine Bolt
18	810-5013-Z	1/2" Flange Lock Nut
19	901-3840-7	Hold Down Shaft Support Gusset
20	901-3830-5	Rear Splash Guard
21	914-3804	1-1/2" Pillow Block Bearing
22	937-0004	1-1/2" Shaft Coupler W/4-Set Screws
23	923-3705	1-1/2" Front Side Shaft
24	923-3704	1-1/2" Rear Side shaft
25	955-3833	3/8" Hydraulic Hose x 27"
26	803-3816-1.5Z	3/8-16 x 1-1/2" FHSCS
27	35-0022	3/8 x 3/8 x 4-1/2" Square Key

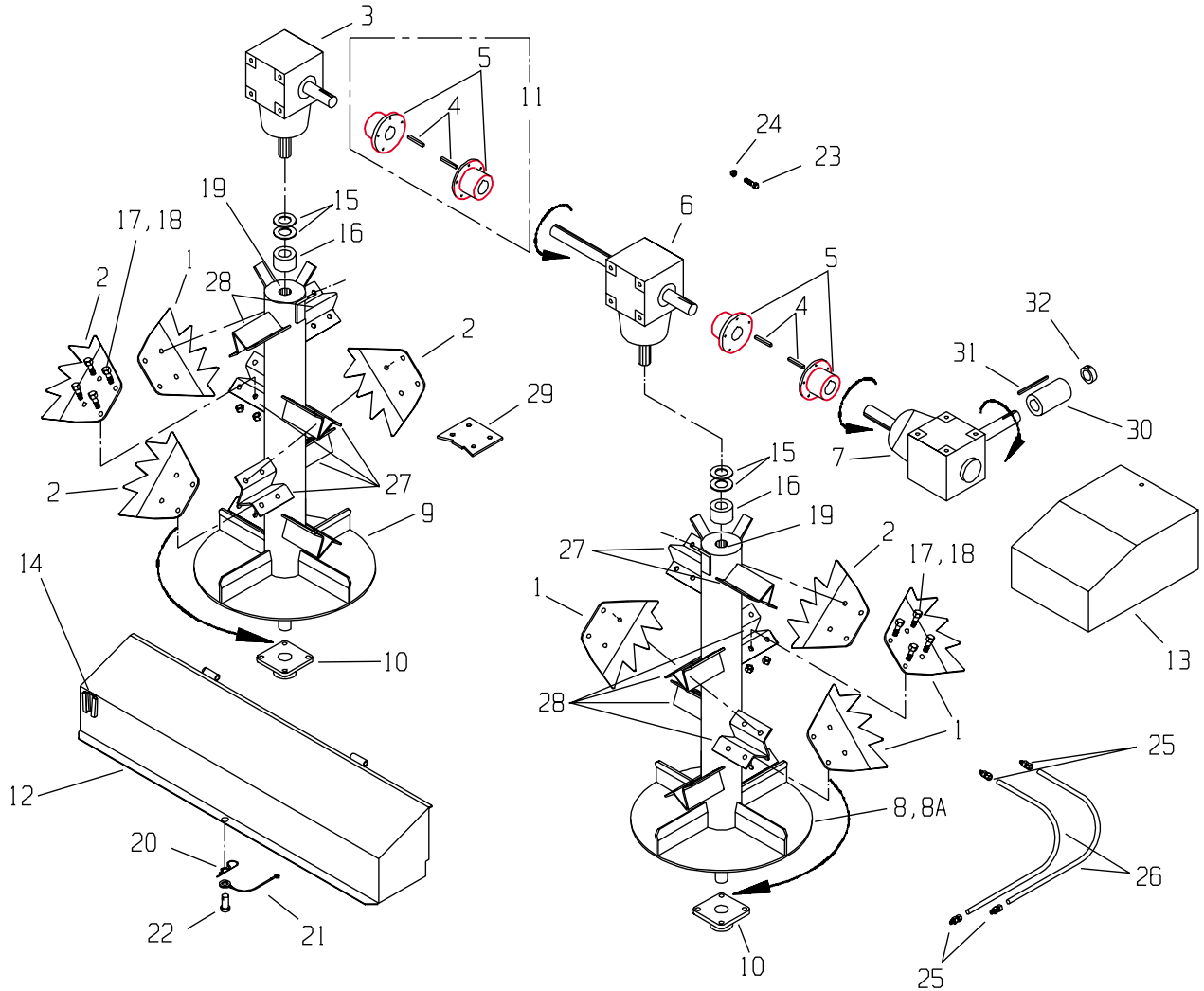
KEY	PART NO.	DESCRIPTION
28	844-3816-Z	3/8" Top Lock Nut
29	924-3710	Front Side Shaft Shield Assembly
30	924-3711	Rear Side Shaft Shield
31	955-3803	Black Male Pipe Tee 3/8 x 3/8 x 3/8"
32	901-3830-8	45 Splash Guards, Optional On Rear
33	933-3701	3" Retaining Ring
34	933-3704	Front Auger Washer Steel
35	933-3703	Bronze Washer
36	921-0005	1-1/2" Locking Set Collar
37	901-3840-6	Hold Down Shaft Support
38	901-3701-21	Inner Rear Panel Support
39	901-3801-41	Hydraulic Hose Holder Ring
40	901-3801-40	Scraper Holder Ring
41	901-3888	Auger Hold Down Attaching Bracket
42	881-6311-3	5/8-13 x 3" Grade 8 Machine Bolt
43	814-6311-Z	5/8-13 Indented Lock Nut
44	901-3711	Cross Support Pipe W/Tabbs
45	831-5013-1.5	1/2x1-1/2" Allen Head Cap Screw Grade 8
46	75-0074	Adjustable Hitch Plate Welded Assembly
47	901-3801-59	Center Shaft Shield
48	803-2520-.75Z	1/4-20 x 3/4" Socket Flat Cap Screw

UNLOADING GATE AND GATE INDICATOR



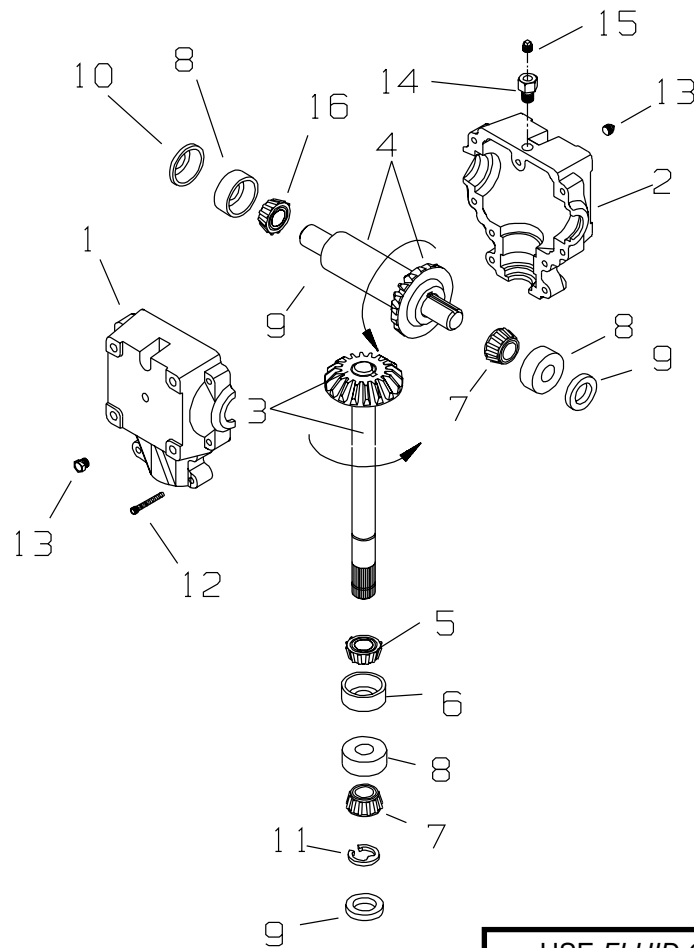
KEY	PART NO.	DESCRIPTION	KEY	PART NO.	DESCRIPTION
1	955-3802-1	Hydraulic Cylinder	24	36-0009	1/8" Stainless Steel Cable, 25' Required
2	901-3712	Gate Lift Arm W/Indicator	24A	36-0010	1/8" Swage Cable Crimp
3	913-3807	Bushing, 954 Bronze	25	901-3701-31	Cable Guide Insulator Bracket
4	925-3807-3	Punchout Retaining Washer	26	901-3701-30	Cable Guide Insulator
5	30-0001	1/4-28 Straight Grease Zerk	27	901-3706-4	Outer Gate Guide Plate
6	33-0030-RH	1/2 x 3/4" Drilled Grease Bolt	28	925-3702	Corner Gearbox Mount Plate
7	805-0125	1-1/4" I.D. Washer	29	901-3853	Gearbox Mount Plate Gusset
8	901-3705	Back Gate Assembly	30	925-3729	Back Gate Arm Pivot Shaft Assembly
9	901-3838-2	Arm Shaft, Gate Pivot	31	822-0050-Z	1/2" Split Lock-Washer
10	901-3838-3	Shaft Sleeve, Gate Pivot	32	925-3743-1	Left Mount Plate Assembly
11	912-0001	Nylon Roller	33	925-3743-2	Left Material Guide Assembly
12	949-3702	Poly Gate Seal	34	29-0009	Spring, Adjustment
13	38-0010	Roll Pin 1/4 x 2"	35	925-3768-2	Spring Pivot Pin Assembly
14	925-3853	Gate Pivot Arm Support	36	925-3768-3	Spring Shaft Assembly
15	925-3728	Gate Guide Roller Shaft Assy. W/Roller	37	925-3768-4	Spring Pivot Sleeve Assembly
16	949-3701	Back Gate Slide Poly Slick	38	815-1008-Z	1-8 Nylon Insert Locknut
17	901-3706-9	Upper Back Gate Guide Plate	39	805-0010-Z	1" Flat Washer Zinc
18	925-3743	Left Material Guide Assembly Complete	40	823-.18-1.25Z	3/16 x 1-1/4" Cotter Pin
19	925-3744	Right Material Guide Assembly Complete	41	925-3744-1	Right Mount Plate Assembly
20	925-3727	Rear Shield Mount Plate	42	925-3744-2	Right Material Guide Assembly
21	925-3707	Gearbox Mount Strap			
22	901-3701-20	Spinner Bearing Mount Channel			
23	901-3701-13	Gearbox Mounting Channel			

SPINNERS & GEARBOX SHAFT DRIVE



KEY	PART NO.	DESCRIPTION	KEY	PART NO.	DESCRIPTION
1	901-3834-1	RH, 4-Point Tooth Paddle, 3/8" 6-Per RH Spinner (Lower) 2-Per LH (Upper)	15	808-1.75-2.5-14	1-3/4I.D. x 2-1/2O.D. x 14 Ga. M.B.
2	901-3835-1	LH, 4-Point Tooth Paddle, 3/8" 6-Per LH Spinner (Lower) 2-Per RH (Upper)	16	933-3709	Gearbox Spinner Spacer
1	901-3834-1-AR	RH, 4-Point Tooth Paddle, 3/8" 6-Per RH Spinner (Lower) 2-Per LH (Upper)(Optional)	17	851-5013-1.5Z	½-13 x 1-1/2" Grade 5 Machine Bolt
2	901-3835-1-AR	LH, 4-Point Tooth Paddle, 3/8" 6-Per LH Spinner (Lower) 2-Per RH (Upper)(Optional)	18	815-5013-Z	½-13 Nylon Insert Locknut
3	19-0029	Left Spinner Gearbox	19	901-3704-1	1-3/4" Bore x 3" Long Splined Hub
4	35-0004	3/8 x 3/8 x 2" Square Key	20	32-0021	2" Hair Pin Clip
5	937-0005	Shaft Coupler 1-3/4" Bore, (4-Required)	21	32-0022	6" Lanyard
6	19-0030	Right Spinner Gearbox	22	32-0023	3/8 x 3/4" Clevis Pin
7	19-0036	Corner Gearbox, (1000 RPM) Standard	23	851-3824-1.5Z	3/8-24 x 1-1/2" Fine Thread Grade 5 Bolt
	19-0035	Corner Gearbox, (540 RPM) Optional	24	815-3824-Z	3/8-24 Nylon Insert Locknut
8	901-3704	R.H. Spinner Assembly Less Paddles	25	930-3602	Male Connector Brass Compression Fitting
8A	901-3704-6	Bottom Spinner Shaft Only (Welded In)	26	735-.25CT	Copper Tube Grease Line (By The Foot)
9	901-3703	L.H. Spinner Assembly Less Paddles	27	901-3834-2	Left Hand Paddle Mount Brackets
10	914-3602	1-1/2" 4-Bolt Bearing	28	901-3835-2	Right Hand Paddle Mount Brackets
11	937-0005K	1-1/2" Coupler Assy. Kit W/Bolts & Keys	29	901-3704-8	Paddle Reinforcing Bracket (8-Per Spinner)
12	924-3703	Rear Main Shield Assembly	30	937-0004	Shaft Coupler, 1-1/2" Bore, 3/8 Keyway, W/4 Set Screws
13	924-3704	Right Rear Gearbox Shield Assembly	31	35-0022	3/8 x 3/8 x 4-1/2" Key
14	33-1002	SMV Sign Bracket	32	921-0005	1-1/2" Set Collar One Piece

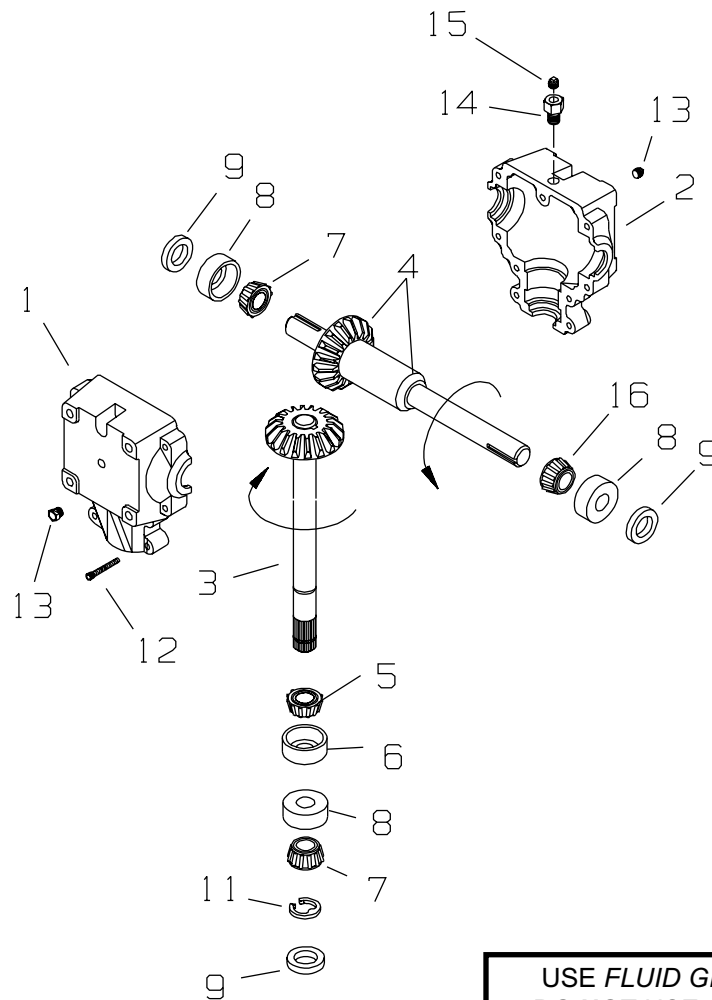
#19-0029
SPINNER GEAR REDUCER - LEFT HAND (1:1)



USE FLUID GEAR GREASE ONLY.
DO NOT USE OIL FOR LUBRICANT.

KEY	PART NO.	DESCRIPTION
1	19-0029-2	Casting, Machined (Thru Holes)
2	19-0029-1	Casting, Machined (Tapped Holes)
3	19-0029-3	Assy, Pinion Shaft/Gear
4	19-0029-4	Assy, Cross Shaft/Gear
5	19-0029-5	Bearing Cone
6	19-0029-6	Bearing Cup
7	19-0029-7	Bearing Cone
8	19-0029-8	Bearing Cup
9	19-0029-9	Seal 1-3/4"
10	19-0029-10	End Plug, Rubber Cover
11	19-0029-11	Retaining Ring, 1.750
12	19-0016-11	Bolt, 3/8-16 x 2.250 SHCS
13	19-0016-5	Plug, 1/2 NPT
14	19-0029-14	Bushing, 1/4 NPT to 1/8 NPT
15	19-0002-17	Plug, Pressure Relief, 5 PSI
16	19-0029-16	Bearing Cone

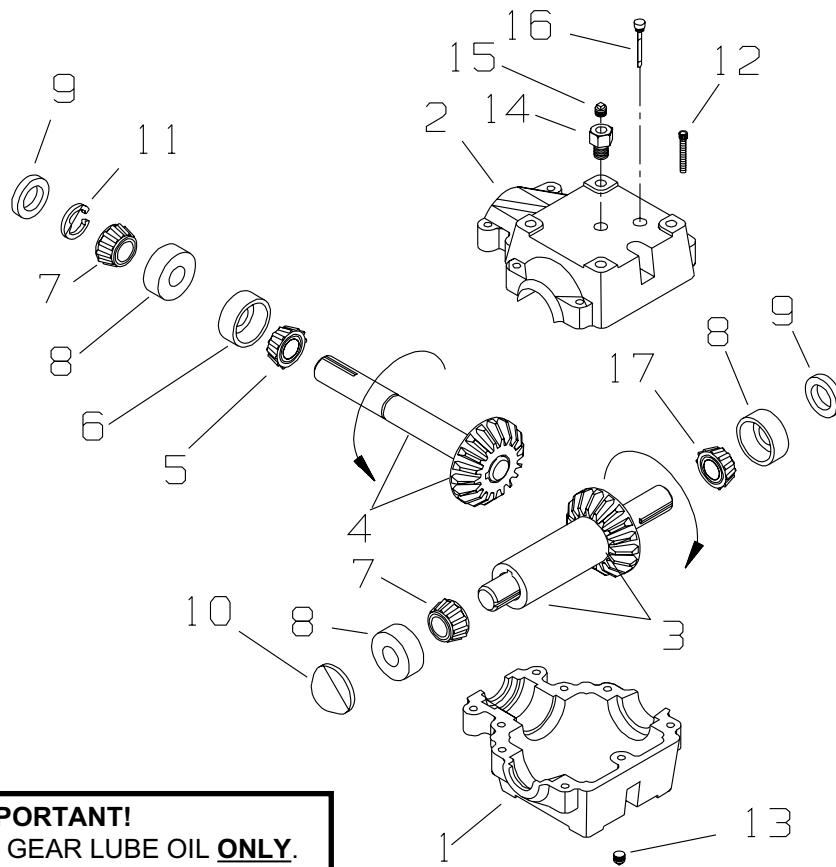
#19-0030 SPINNER GEAR REDUCER - CENTER (1:1)



**USE FLUID GEAR GREASE ONLY.
DO NOT USE OIL FOR LUBRICANT.**

KEY	PART NO.	DESCRIPTION
1	19-0029-2	Casting, Machined (Thru Holes)
2	19-0029-1	Casting, Machined (Tapped Holes)
3	19-0029-3	Assy, Pinion Shaft/Gear
4	19-0030-1	Assy, Cross Shaft/Gear
5	19-0029-5	Bearing Cone
6	19-0029-6	Bearing Cup
7	19-0029-7	Bearing Cone
8	19-0029-8	Bearing Cup
9	19-0029-9	Seal 1-3/4"
11	19-0029-11	Retaining Ring, 1.750
12	19-0016-11	Bolt, 3/8-16 x 2.250 SHCS
13	19-0016-5	Plug, 1/2 NPT
14	19-0029-14	Bushing, 1/4 NPT to 1/8 NPT
15	19-0002-17	Plug, Pressure Relief, 5 PSI
16	19-0029-16	Bearing Cone

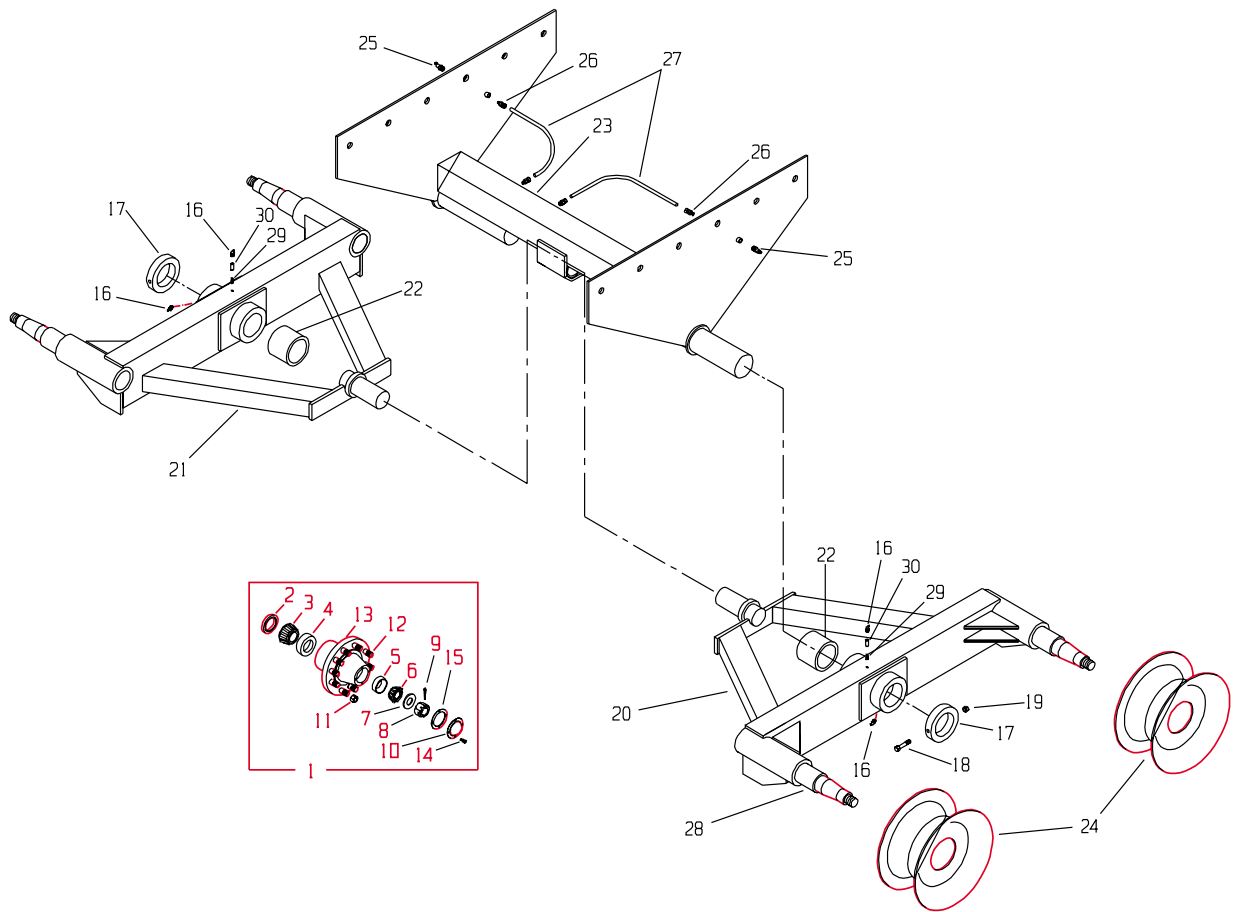
CORNER GEAR REDUCER - RIGHT HAND



IMPORTANT!
 USE #80-90 WT. GEAR LUBE OIL **ONLY**.
DO NOT USE GREASE FOR LUBRICANT.

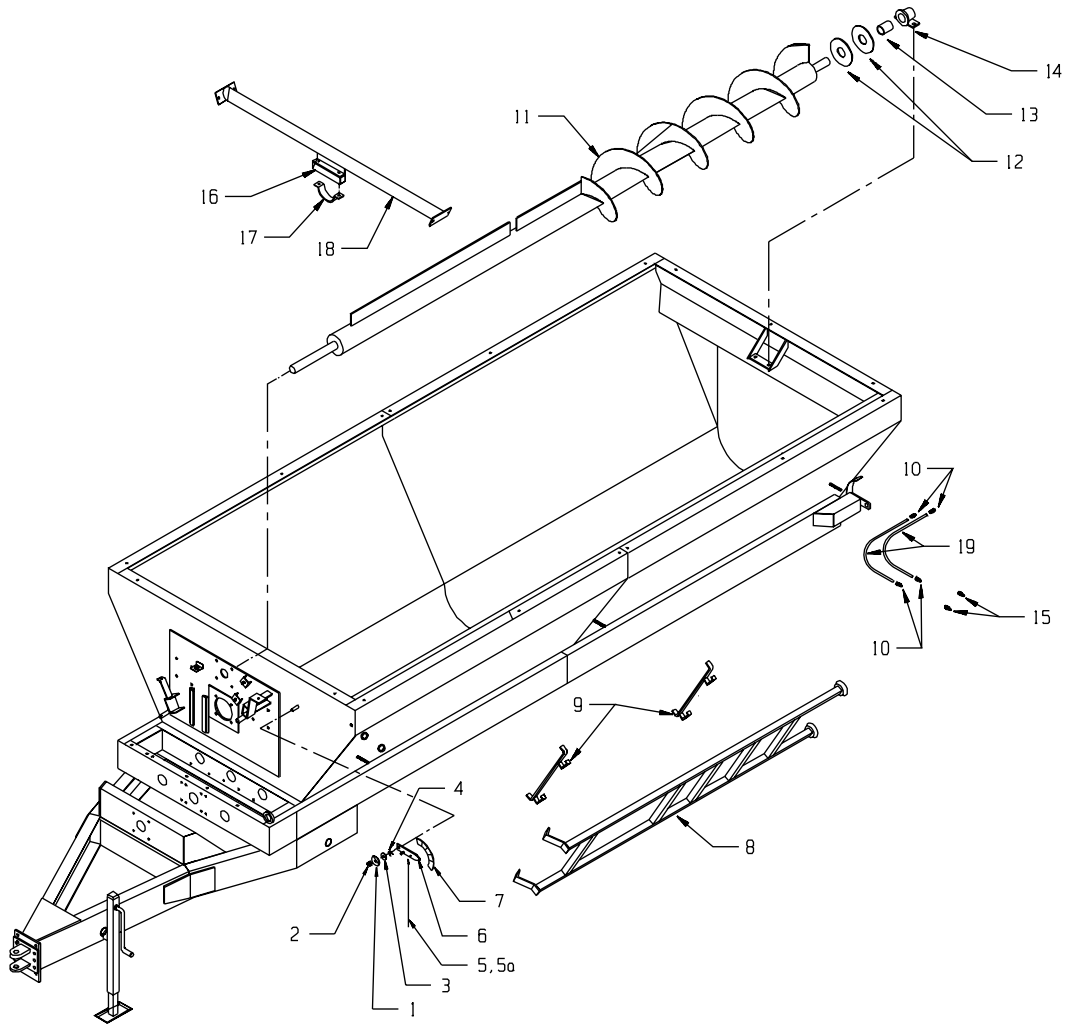
KEY	1000 RPM DRIVE PART NO.	540 RPM DRIVE PART NO.	DESCRIPTION
	19-0036	19-0035	Complete Gearbox
1	19-0031-1	19-0031-1	Casting, Machined (Tapped Holes)
2	19-0031-2	19-0031-2	Casting, Machined (Thru Holes)
3	19-0036-1	19-0035-1	Assy, Cross Shaft/Gear
4	19-0031-4	19-0035-2	Assy, Pinion Shaft/Gear
5	19-0029-5	19-0029-5	Bearing Cone
6	19-0029-6	19-0029-6	Bearing Cup
7	19-0029-7	19-0029-7	Bearing Cone
8	19-0029-8	19-0029-8	Bearing Cup
9	19-0029-9	19-0029-9	Seal 1-3/4"
10	19-0029-10	19-0029-10	End Plug, Rubber Cover
11	19-0029-11	19-0029-11	Retaining Ring, 1.750
12	19-0016-11	19-0016-11	Bolt, 3/8-16 x 2.250 SHCS
13	19-0016-5	19-0016-5	Plug, 1/2 NPT
14	19-0023-2	19-0023-2	Bushing, 1/2 NPT to 1/8 NPT
15	19-0002-17	19-0002-17	Plug, Pressure Relief, 5 PSI
16	19-0031-5	19-0031-5	Dip Stick
17	19-0029-16	19-0029-16	Bearing Cone

HUBS, AXLE & TANDEM ASSEMBLY



KEY	PART NO.	DESCRIPTION	KEY	PART NO.	DESCRIPTION
1	75-0211	Hub Assembly (complete), 15,000 lbs	24	75-0269	Wheel Rim, 12.25 x 22.5 - 10 Hole (Used 425/65/R22.5 Tire)
2	75-0211-2	Seal		75-0270	Wheel Rim, SW18C x 16.1 - 10 Hole (21.5 x 16.1 Tire)
3	75-0211-3	Bearing Cone	25	30-0002	Zerk, 1/8" NPT Straight
4	75-0211-4	Bearing Cup	26	930-3602	Male Connector Brass Com pression
5	75-0208-5	Bearing Cup	27	735-.25CT	Grease Line (By the foot)
6	75-0208-6	Bearing Cone	28	75-0111	Spindle Assembly
7	75-0208-7	Washer	29	30-0008	Nipple 1/8" NPT
8	75-0208-8	Nut	30	30-0009	Coupler 1/8" NPT
9	75-0208-9	Cotter Pin			
10	75-0208-10	Hub Cap			
11	75-0208-11	Lug Nut - Flanged			
12	75-0208-12	Stud Bolt			
13	75-0211-1	Hub Only w/Races & Studs			
14	75-0208-13	Hub Cap Bolt			
15	75-0208-14	Hub Cap Gasket			
16	30-0006	Zerk 1/8"NPTx90°			
17	901-3867-2	Locking Collar			
18	881-5013-6.5	HHCS, 1/2-13 x 6.5" GR8			
19	814-5013-Z	Locknut 1/2-13 Center			
20	901-3873-3	Left O-Beam, w/o Hubs			
21	901-3874-3	Right O-Beam, w/o Hubs			
22	901-3864-2	Nylon Bushing			
23	901-3872	Tandem Axle Assembly Only			

LADDER, THIRD AUGER & GATE INDICATOR



KEY	PART NO.	DESCRIPTION
1	925-3807-3	Punchout Retaining Washer
2	815-5013-Z	1/2" -13 Nylon Insert Lock Nut
3	805-0050	Washer, 1/2" Flat
4	933-3706	Spring
5	36-0009	1/8" Stainless Steel Cable (25' Required)
5A	36-0010	1/8" Crimp Sleeve
6	925-3723	Gate Indicator
7	46-5570-2	Gate Indicator Decal
8	901-3707	Ladder
9	901-3701-38	Ladder Hanger Weldment
10	930-3602	Male Connector Brass Compression
11	926-3703	3rd Auger Complete
12	933-3606	Bronze Washer
13	913-3602-2	Bronze Bushing
14	925-3865	3rd Auger Bushing Assy (Includes Item 13)
15	30-0002	Zerk, Straight
16	901-3810-8	3rd Auger Spacer Channel
17	901-3832-2	Support Pipe Strap
18	901-3711	3rd Auger Support Pipe
19	735-.25CT	Grease Line, Spinner Shaft (By the foot)

INSTRUCTIONS FOR AUTOMATIC CHAIN OILER



WARNING: DISCONNECT PTO DRIVE SHAFT AND HYDRAULIC HOSES (RELIEVE HYDRAULIC PRESSURE) BEFORE CLEANING, ADJUSTING, LUBRICATING OR SERVICING THIS SPREADER. FAILURE TO HEED MAY RESULT IN SERIOUS PERSONAL INJURY OR DEATH.

The automatic chain oiler attachment gives a squirt of clean oil to all roller chains every time that the spreaders rear gate, hydraulic cylinder is activated. In this way, the spreaders roller chains get oiled in direct proportion to the number of hydraulic cylinder cycles of the rear gate. This assures adequate lubrication.

New 30 weight oil, which is placed in the reservoir tank mounted on the spreader, is all that is needed to properly lubricate all roller chains and sprockets. The automatic chain oiler does not use any oil from the tractors hydraulic system. The hydraulic hose connected to the bottom of the oiler pump only serves to power the piston in the pump every time that the spreaders rear gate is opened.

Should the oil reservoir tank run dry, pour about a ½ cup of clean 30 weight oil into the tank. Allow time for the oil to run down into the oiler pump slowly and allow air to escape. After thirty minutes to one hour has passed, finish filling the reservoir tank. Make sure that all fittings and brackets are tight when finished filling the tank.



WARNING: HYDRAULIC FLUID ESCAPING UNDER PRESSURE CAN HAVE SUFFICIENT FORCE TO PENETRATE SKIN. KEEP ALL HOSES AND CONNECTIONS IN GOOD SERVICEABLE CONDITION. FAILURE TO HEED MAY RESULT IN SERIOUS PERSONAL INJURY OR DEATH.

While running the tractors hydraulics only, open and close the spreaders rear gate several times. This will cycle the hydraulic cylinder leading to the oiler pump. Keep cycling until oil can be seen in all of the oil lines leading to the oiler brushes. (If you experience problems priming the oiler pump, you may need to bleed air out of the hydraulic hose where it is connected to the pump. Crack the fitting until oil comes out then re-tighten.) The hydraulic cylinder that the oiler pump is tied into is double acting and must reach 300 PSI of pressure to actuate the pump.

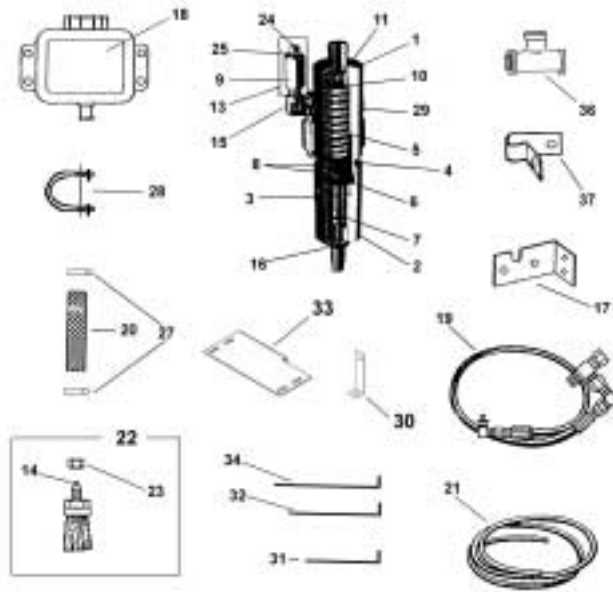
When replacing oiler brushes into brush holders, use regular ½"-20 nuts. Tighten nut finger tight initially as some adjustment may be needed later. For best results, place brush holders over top of roller chains and directly on top of sprockets. Adjust brush holders so oiler brushes are pushed down into the roller chain approximately ½". Carefully tighten up the ½"-20 nuts on the oiler brushes. DO NOT over tighten as damage to the brush will occur. The plastic threads of the oiler brush will crack and then break off from the brush body.

IMPORTANT! The 5/32" oil line tubing can only be removed from an oiler brush by pushing in on the red plastic ring and pulling the tubing out while holding the ring down.

The oiler pump is set at the factory to deliver the maximum amount of oil per cycle. If less oil is desired, loosen the jam nut on the bottom of the pump and screw in the adjusting shaft 1/4" or approximately 5 turns. It is not recommended to screw the shaft into the bottom of the oiler pump more than 15 turns as this may not allow for proper lubrication of the roller chains.

IMPORTANT! Always use new 30 weight oil. In cold weather, use a SAE 10 or a mixture of two parts of 30 weight oil to one part diesel fuel.

OIL-KIT



KEY	PART NO.	OEM PART NO.	DESCRIPTION
1	952-0001-1-1	1001-6-B	Oiler Body 6 Port Black
2	952-0001-1-2	1518-B	Adj End Cap Oil Black
3	952-0001-1-3	4511	Plunger, Brass Adj End Cap
4	952-0001-1-4	1033	Piston, 2 Groove Alum, Short
5	952-0001-1-5	1004	Spring, Oiler
6	952-0001-1-6	1006	Washer, Rubber Lube Minder
7	952-0001-1-7	5011	O Ring, Adj End Cap Plunger
8	952-0001-1-8	1008	O Ring, Oiler Piston 2-022 90 Dur
9	952-0001-1-9	1012	One Way Valve (Schrader Valve)
10	952-0001-1-10	1019	Screen Flat Oiler .906 Dia
11	952-0001-1-11	3520	Bearing, 7/16" Stainless
12	952-0001-1-12	1017	Decal, Lube Minder Body
13	952-0001-1-33	4515	Holder, Manifold Valve Assembly
14	952-0001-1-14	2511	5/32 Push In Insert (Nycoil)
15	952-0001-1-15	6002	90° Degree 1/8" St Elbow
16	952-0001-1-16	6010	1/2-20 Jam Nut
17	952-0001-1-17	2016	Bracket Oiler Mtg Pump
18	952-0001-1-18	2550	Reservoir Two Quart Tank
19	952-0001-1-19	M-4555	Hydraulic Hose Assembly Meyer Mfg.
20	952-0001-1-20	7010	Tubing 5/8" ID Clear Polybraid
21	952-0001-1-21	7012	Tubing 5/32" Nylon (Feet)
22	952-0001-1-25	4514	Brush Assembly No 5/32 Insert
22A	813-5020-Z		1/2 20 Plated Nut
24	952-0001-1-27	576895	Sleeve Nut Brass
25	952-0001-1-28	576894	5/32 Brass Ferrule
27	952-0001-1-30		1" Hose Clamp
28	952-0001-1-31	4517	U-Bolt Assembly #13
29	952-0001-1-32	219P-2	1/8" Hex Head Pipe Plug
30	952-0001-2		#80 Brush Holder
31	952-0001-3		Left #120 Auger Chain Brush Holder
32	952-0001-4		Right #120 Auger Chain Brush Holder
33	952-0001-5		Oiler Tank Mount Plate
34	952-0001-6		#80 Center Shaft Chain Brush Holder
36	955-3803		BM Pipe Tee 3/8 x 3/8 x 3/8
37	08-0050		5/16" Closed "J" Clip

MEYER INDUSTRIAL SPREADER

“TROUBLE SHOOTING”

	SYMPTOM	PROBLEM	SOLUTION
AUGERS	Augers shake or chatter	Stiff roller chains - dry Loose roller chains Worn sprockets/chain Dry auger trough	Lubricate roller chains Tighten roller chains Replace sprockets/chains Load auger trough w/manure
	Augers wobble/lift up & down	Worn auger shaft bushings Worn auger hold down nylon bearings	Replace auger shaft bushings Replace auger hold down nylon bearings
FLOW CONTROL GATE	Will not lift	No hydraulic supply Froze tight w/build-up	Supply hydraulic power Thaw frozen build-up
	Will not close/seal	Lodged foreign object/dirty	Remove foreign object/clean
	Sticks/binds	Dirty/dry slide guides Worn slide guides Worn out slide guide polyslick	Clean/lubricate slide guides Replace slide guides Replace slide guide polyslick
GEAR BOXES	Clunking sounds	Gears/bearings wearing Low oil or fluid gear grease	Replace gears/bearings Fill with #80-#90 wt. Gear lube oil or fluid gear grease
	Excessive oil use	Worn out oil seals Dry manure & twine wrapping	Replace oil seals Clean & remove build-up at seal areas
	Gear damage	High speed/full load start-up Worn out gears	Slow start-up, fill with oil Replace gears
MATERIAL GUIDES	Dirty/build-up	Too slow spinner RPM's	Operate spreader at recommended RPM's
PTO SHAFT	Whips/shakes	Over extended or bent PTO	Adjust tractor drawbar length - See Page 7
	Vibrates up & down	Spreader center shaft bent	Replace center shaft
	Worn Universal Joints	Lack of lubrication/used	Lubricate joints daily replace joint
ROLLER CHAINS AND SPROCKETS	Excessive chain wear	Lack of lubrication Out of alignment/loose	Lubricate/align/tighten
	Roller chain breakage	Loose roller chain Worn sprockets	Tighten roller chains Replace sprockets
	Sprocket teeth tipped over	Worn roller chain Bad roller bearings	Replace roller chain Replace bearings
SPINNERS PADDLES/ TEETH	Spinners turn hard/squeak	Bad lower spinner bearings	Replace lower spinner bearings
	Shake at high RPM's (excessive vibration)	Spinner bent/out of balance	Straighten/balance/replace spinner
	Excessive paddle damage	Wobbled out lower spinner shaft Too slow spinner RPM's Lodging of manure Spreading foreign objects	Replace or reweld lower spinner shaft Operate spreader at recommended RPM's Adjust material guides Straighten/replace paddles Avoid loading foreign objects

MEYER EQUIPMENT WHEEL TORQUE

BOLT/STUD SIZE	SOCKET SIZE	PRESS FORMED WHEEL CENTER	BOLT TYPE	HEAVY DUTY WHEEL CENTER
1/2	3/4	80 ft lbs	Lug Bolt	85 ft lbs
9/16	7/8	80 ft lbs	Lug Bolt	120 ft lbs
5/8	15/16	100 ft lbs	Bevel or Flange Nut	160 ft lbs
3/4	1-1/8		Flange Nut	265 ft lbs

TIRE INFLATION

TIRE SIZE	PLY	PSI
11L-15	6	28
11L-15	8	36
11L-15	10	44
11L-15	12	52
12.5L-15	8	36
12.5L-15	10	44
12.5L-15	12	52
14L-16.1	8	32
14L-16.1	12	52
16.5L-16.1	8	28
16.5L-16.1	10	36
21.5L-16.1	10	36
21.5L-16.1	14	40
11R/22.5	used truck	75
425/65x22.5	used truck	75

This Page Intentionally Blank

This Page Intentionally Blank

This Page Intentionally Blank

MEYER INDUSTRIAL SPREADER “SPECIFICATIONS”

Standard Equipment Specifications		
	Model 5570	
Bushels	550 (no ht. ext.)	700 (with ht. ext.)
Gallon	2630	3400
Cubic Foot	350	454
Weight	10,975 lbs	11,445 lbs.
Overall Height w/21.5L Tire	81" (No ht. ext.)	90" (with ht. ext.)
Tank Length	18'	
Overall Width w/21.5L Tire	110"	
Main Drive Chain	#140	
Tank Steel - copper bearing	1/4"	
Frame construction (channel)	8"	
Spindle Size	3 1/2"	
Hub Size	10 Bolt 15,000 lbs.	
Expeller Size	20"	
Expeller Speed	665 RPM Standard	
Auger Speed	12.5 RPM Standard	
Tractor PTO Speed (Max.)	1000 or 540 RPM	
Auger Diameter	20"	
Overall Length	26'5"	
Automatic Oiler	Standard	
3rd Auger (tough pen manure)	Standard	

SPECIFICATIONS SUBJECT TO CHANGE WITHOUT NOTICE.

MEMBER



**Manufactured by:
Meyer Mfg. Corp.**

County Hwy. A West
P.O. Box 405
Dorchester, Wisconsin 54425-0405
Phone 715-654-5132 FAX 715-654-5513
1-800-325-9103



www.meyermfg.com

E-mail: sales@meyermfg.com

Farm Equipment Buyers Trust the Name Meyer!



MEYER