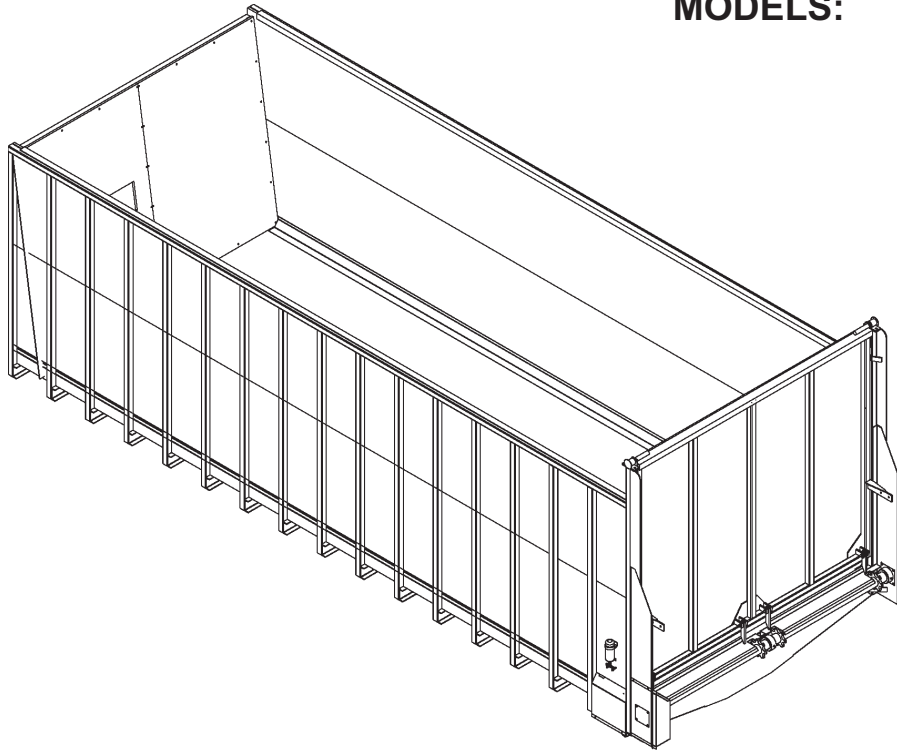


OPERATORS AND PARTS MANUAL NO. 02-05-8100
FOR
8100 SERIES

MEYER

“BOSS”
REAR UNLOAD FORAGE BOX

MODELS: 8118
8120
8122
8124



DO NOT OPERATE EQUIPMENT UNTIL THIS MANUAL HAS BEEN READ AND UNDERSTOOD.

MEMBER



Over
65 years
of service
to our customers

MANUFACTURED BY
Meyer Mfg. Corp.

County Hwy. A West
P.O. Box 405
Dorchester, Wisconsin 54425-0405
Phone 715-654-5132 • FAX 715-654-5513
1-800-325-9103
www.meyermfg.com
E-mail: sales@meyermfg.com



INTRODUCTION

Congratulations on your purchase of a new Meyer Rear Unload Forage Box. Undoubtedly you have given much consideration to your purchase and we're proud that you have selected Meyer. Pride in craftsmanship, engineering and customer service have made Meyer products the finest in the farm equipment industry today.

There is no substitute for quality. That is why thousands of people like you have purchased Meyer farm equipment. They felt it was the best equipment to serve their farming needs, now and in years to come. We ask that you follow our policy of "safety first," and we strongly suggest that you read through the owner's manual before operating your Meyer farm equipment.

Meyer Manufacturing Corporation wants to thank you for not compromising quality. We are determined to offer excellence in customer service as well as provide you with the very best value for your dollar.

Sincerely,

All Employees of
MEYER MANUFACTURING CORPORATION

The Model 8100 is available as a truck mounted unit or mounted to a wagon running gear pulled and powered by a farm tractor. When the PTO is referred to, it means power takeoff from the truck or from the tractor, whichever applies. If you have a wagon model, the PTO drive is by a rotating drive shaft connecting the tractor PTO to the forage box drive line. This is referred to as the PTO drive shaft. The PTO drive shaft is connected to the tractor for unloading, and disconnected and placed in a storage bracket when traveling and filling the forage box.

The Model 8100 may be referred to as rear unload box, forage box, box or rear unload forage box in this manual.



This SAFETY ALERT SYMBOL means ATTENTION! BE CAREFUL! YOUR SAFETY IS INVOLVED! It stresses an attitude of HEADS UP FOR SAFETY. When you see this symbol, be alert to the possibility of PERSONAL INJURY and carefully read the message that follows.



WARNING: NEVER OPERATE WITHOUT ALL COVERS, SHIELDS AND GUARDS IN PLACE. KEEP HANDS, FEET AND CLOTHING AWAY FROM MOVING PARTS. SOME COVERS AND GUARDS HAVE BEEN REMOVED FOR ILLUSTRATIVE PURPOSES ONLY IN THIS MANUAL. FAILURE TO HEED MAY RESULT IN SERIOUS PERSONAL INJURY OR DEATH.

Meyer Manufacturing Corporation reserves the right to make improvements in design, or changes in specifications at any time, without incurring any obligation to owners of units previously sold.

This supersedes all previous published instructions.

IMPORTANT:

At the front of this manual is a Product Registration and Inspection Certificate. Be sure your dealer has completed this certificate and promptly forwarded a copy to Meyer Manufacturing to validate the manufacturer's warranty. The product model and serial number are recorded on this certificate and below for proper identification of your Meyer Forage Box by your dealer and the manufacturer when ordering repair parts. The serial number is stamped in the front upright of the left-hand side.

Model No. _____

Serial No. _____

Date of Purchase _____

At the back of this manual is the repair parts section. All replacement parts are to be obtained from or ordered through your Meyer dealership. When ordering repair parts, refer to the parts section and give complete information including quantity, correct part number, detailed description and even Model No. and Serial No. of the forage box which needs repair parts.

HOW TO READ YOUR SERIAL NUMBER

Your serial number is stamped on the front left hand vertical tube.

Example: 1281253

Model Year / Model / Sequence of Build

↓ ↓ ↓
12 81 253

NOTE: All references to right hand (RH), left hand (LH), front and rear apply to the product as viewed from the rear of the box.

You are urged to study this manual and follow the instructions carefully. Your efforts will be repaid in better operation and service as well as a savings in time and repair expense. Failure to read this manual and understand the machine could lead to serious injury. If you do not understand instructions in this manual, contact either your dealer or Meyer Manufacturing Corp. at Dorchester, WI 54425.

TABLE OF CONTENTS

INTRODUCTION	2
HOW TO READ YOUR SERIAL NUMBER	2
TABLE OF CONTENTS	3
MANUFACTURER'S WARRANTY	4
SAFETY PRECAUTIONS	5
SAFETY FIRST	6
PRE-OPERATION	8
TRANSPORTING	9
<u>REAR UNLOAD</u> OPERATION	11
LUBRICATION	14
ADJUSTMENTS	16
REPAIR PARTS	17
#19-0038 2:1 RATIO GEARBOX	17
MAIN DRIVE SHAFT (PTO DRIVE).....	18
GEARBOX & CHAIN DRIVE	20
HYDRAULIC PLUMB TO THE FRONT	22
HYDRAULIC DRIVE (OPTIONAL FRONT MOUNT) #8100 - HYD	24
APRON	26
8100 MAIN BODY	30
8100 MAIN BODY (CONTINUED).....	32
REAR DOOR	34
OPTIONAL DOUBLE DOOR	36
HIGHWAY TRANSPORT AG LIGHTS.....	38
HIGHWAY TRANSPORT AG LIGHTS.....	39
8100 OPTIONAL GRAIN KIT	40
8100-GDS GATE DELAY PACKAGE (PRIOR TO SN 0781253).....	42
8100-GDS-SM & 8100-GDS-SME GATE DELAY PACKAGE W/SIDE MOUNT CONTROL (SN #0781253 & LATER)	44
8100-GDS-RL-PKG HYDRAULIC RETURN LINE GATE DELAY (HYDRAULIC UNLOAD SN 1081213 & LATER).....	46
ROLLER CHAIN OILER.....	48
OPTIONAL TRUCK MOUNT FENDER & MUD FLAP.....	49
OPTIONAL WAGON MOUNT KIT (#8100 - WAGON)	50
MEYER FORAGE BOX "MAINTENANCE RECORD"	51
"SPECIFICATIONS"	52

NEW MEYER REAR UNLOAD FORAGE BOX MANUFACTURER'S WARRANTY

- I. The "Product Registration & Inspection Certificate" along with the original billing invoice "Owners Registration Form" must be completed in full and promptly returned to Meyer Mfg. Corp. for this warranty to become both valid and effective. All warranties on New Meyer Forage Boxes shall apply only to the original retail customer from an authorized Meyer Mfg. Corp. dealership.

- II. This warranty shall not apply to any Meyer Forage Box which has been subjected to misuse, negligence, alteration, accident, incorrect operating procedures, or which shall have been repaired with parts other than those obtained through Meyer Mfg. Corp.

- III. Meyer Mfg. Corp. warrants New Meyer Forage Boxes to be free from defects in material and workmanship under recommended use and maintenance service, as stated in the Operator's and Parts Manual," as follows:
 - A. Meyer Mfg. Corp. will repair or replace F.O.B. Dorchester, WI, as Meyer Mfg. Corp. elects, any part of a new Meyer Forage Box which is defective in material or workmanship:
 1. Without charge for either parts or labor during the first (1) year from purchase date to the original retail customer.
 2. Without charge for parts only during the second (2) year from purchase date to the original retail customer.

 - B. In addition to the above basic warranty, Meyer Mfg. Corp. will repair or replace F.O. B. Dorchester, WI as Meyer Mfg. Corp. elects:
 1. Any part of the following which is defective in material or workmanship (not neglect to recommended use and service) without charge for parts only (not labor) during the stated time periods from date of purchase to the original retail customer:

Two (2) Years: The D667XH pintle main apron chain assembly.
 2. Any part of the following which is defective in material or workmanship (not neglect to recommended use and service) with a "pro-rated" charge for parts only (not labor) during the stated time period from date of purchase to the original retail customer:

Ten (10) Years: a. The all welded steel frame box structure.

- IV. COMMERCIAL USE: Coverage as in paragraph III A1 ONLY, except warranty coverage is for (90) days for parts and labor to the original commercial retail customer.

- V. Repairs eligible for labor warranty must be made by Meyer Mfg. Corp. or an authorized Meyer dealership. The original retail customer is responsible for the transportation of the forage box to the dealership for warranty service or for any service call expenses.

- VI. Except as stated above, Meyer Mfg. Corp. shall not be liable for injuries or damages of any kind or nature, direct, consequential, or contingent, to persons or property. This warranty does not extend to loss of crop or for any other reasons.

- VII. No person is authorized to give any other warranties or to assume any other obligation on Meyer Mfg. Corp.'s behalf unless made or assumed in writing by Meyer Mfg. Corp. This warranty is the sole and exclusive warranty which is applicable in connection with the manufacture and sale of this product and Meyer Mfg. Corp.'s responsibility is limited accordingly

Optional Equipment-Tarp, scales etc. warranty-See original equipment warranty.

SAFETY PRECAUTIONS



This symbol is used to call attention to instructions concerning personal safety. Be sure to observe and follow these instructions. Take time to be careful!



WARNING: BEFORE ATTEMPTING TO OPERATE THIS FORAGE BOX, READ AND STUDY THE FOLLOWING SAFETY INFORMATION. IN ADDITION, MAKE SURE THAT EVERY INDIVIDUAL WHO OPERATES OR WORKS WITH THE FORAGE BOX, WHETHER FAMILY MEMBER OR EMPLOYEE, IS FAMILIAR WITH THESE SAFETY PRECAUTIONS.

Require anyone who will operate this forage box to read and completely understand this owner's manual. Give necessary instructions.

DO NOT operate, service, inspect or otherwise handle this forage box until all operators have read this Owner's Manual and have been properly trained in its intended usage.

DO NOT allow minors (children) or inexperienced persons to operate this forage box.

DO NOT clean, adjust or lubricate while the forage box is in motion.

Inspect when first delivered and regularly thereafter; that all connections and bolts are tight and secure before operating.

Know how to stop operation of the forage box before starting it!

DO NOT operate until all shields and guards are in place and securely fastened.

Make certain everyone is clear of the forage box before applying power.

Keep hands, feet and clothing away from moving parts. Loose or floppy clothing should not be worn by the operator.

Observe all applicable traffic laws when transporting on public roadways (where legal to do so). Check local laws for all highway lighting and marking requirements.

Always install a SMV emblem on forage box for transporting on roadways and keep this emblem clean and bright.

DO NOT step up on any part of the forage box at any time. DO NOT use the PTO guard as a step.

Keep the forage box away from power lines. Contact with electric lines may result in serious injury or death by electrocution!

There are additional Safety precautions associated with Truck mounted units:

If the forage box becomes clogged, shut off the truck, set park brake, remove keys, keep keys in your possession, and allow all mechanism to stop. Then, clean or work on the forage box as required.

Always shut off the truck, remove keys, keep keys in your possession to prevent accidental startup or unexpected movement before working on forage box.

There are additional Safety precautions associated with Tractor towed units:

If the forage box becomes clogged, shut off the tractor engine and allow all mechanisms to stop. Disconnect PTO shaft. Then, clean or work on the forage box as required.

Always shut off power and disconnect PTO shaft from tractor to prevent accidental startup or unexpected movement before working on forage box.

DO NOT step over the power take-off shaft. Stay clear of the PTO at all times.

Keep PTO shaft telescoping tube shields turning freely. Keep PTO master shield on tractor. Replace damaged or missing shields.

Never operate PTO above normal 540 RPM rating. Never connect forage box PTO shaft to a 1000 RPM tractor PTO.

Use only properly rated running gear and tires.

DO NOT tow at speeds in excess of 20 MPH when transporting this forage box. Never exceed a safe travel speed.

MEYER MFG. CORP. PROVIDES GUARDS FOR EXPOSED MOVING PARTS FOR THE OPERATOR'S PROTECTION; HOWEVER, SOME AREAS CANNOT BE GUARDED OR SHIELDED IN ORDER TO ASSURE PROPER OPERATION. THE OPERATOR'S MANUAL AND DECALS ON THE FORAGE BOX ITSELF WARN YOU OF DANGERS AND MUST BE READ AND OBSERVED CLOSELY!

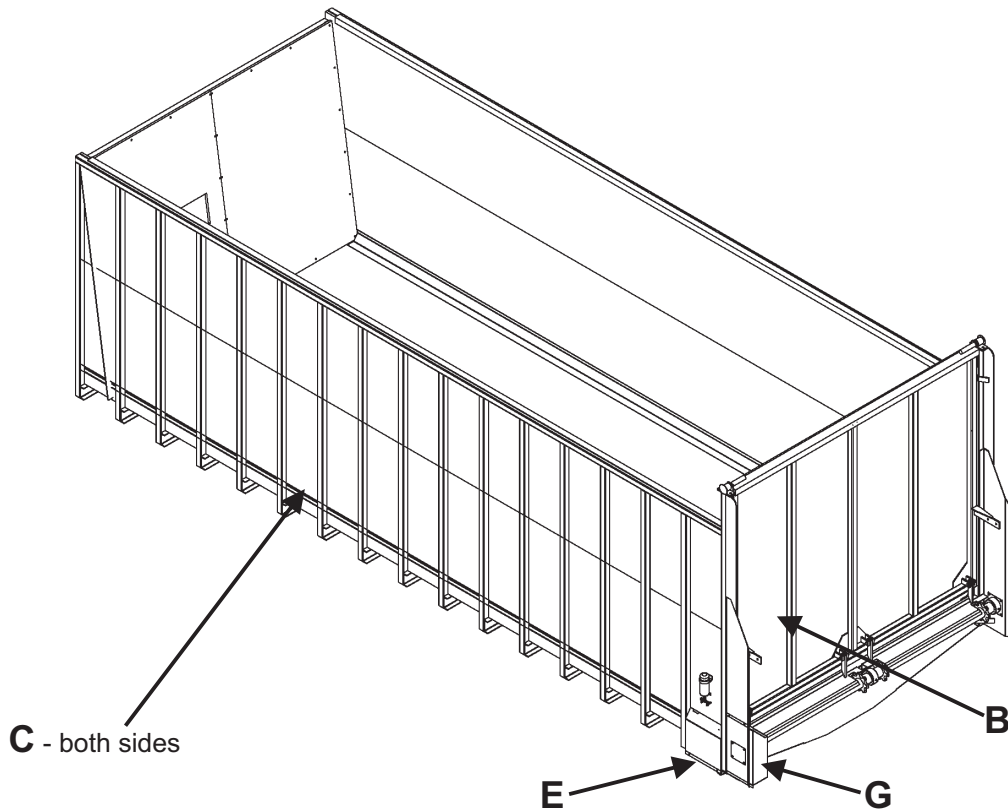
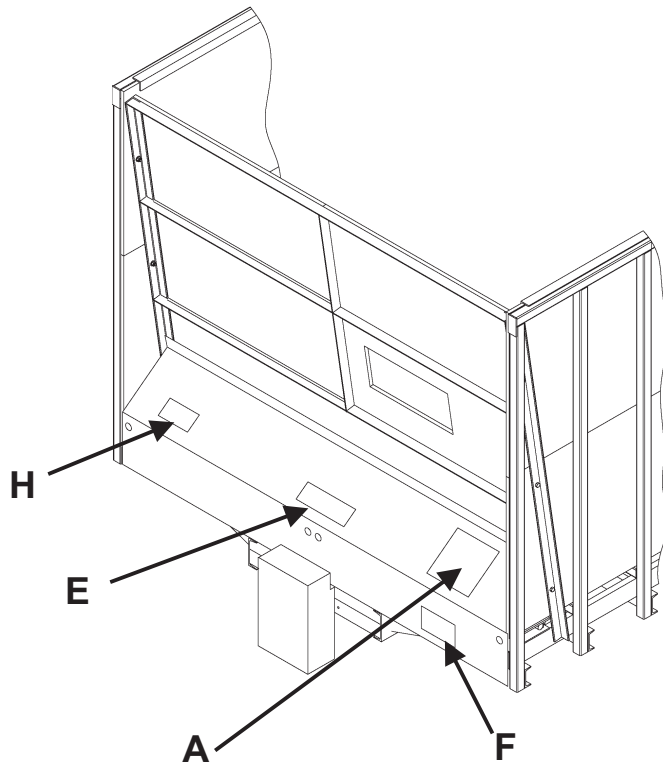
Study the Above Safety Rules

FAILURE TO HEED MAY RESULT IN SERIOUS PERSONAL INJURY OR DEATH.



SAFETY FIRST

D - on PTO Drive Shaft Guard - Tractor Pulled MODELS (not shown).



CAUTION: READ ALL DECALS ON THE FORAGE BOX AND IN THIS MANUAL. KEEP THESE DECALS CLEAN AND REPLACE ANY LOST OR DESTROYED DECALS. BECOME FAMILIAR WITH ALL TRUCK OR TRACTOR AND FORAGE BOX CONTROLS.



SAFETY FIRST



The Meyer Forage Box is manufactured with operator safety in mind. Located on the forage box are various decals to aid in operation and warn of danger or caution areas. Pay close attention to all decals on the forage box.



DO NOT REMOVE ANY DECALS. IF DECALS ARE LOST, DAMAGED OR IF FORAGE BOX IS REPAINTED, REPLACE DECALS. REMEMBER: DECALS ARE FOR YOUR PROTECTION AND INFORMATION.

A brief definition of signal words that are used in this manual is as follows:



DANGER Indicates an imminently hazardous situation that, if not avoided, will result in death or serious injury.



WARNING Indicates a potentially hazardous situation that, if not avoided could result in death or serious injury, and includes hazards that are exposed when guards are removed.



CAUTION Indicates a potentially hazardous situation that, if not avoided may result in minor or moderate injury.

CAUTION

SAFETY FIRST

(Do Not Operate This Machine Without Reading These Instructions)

Meyer Mfg. Corp. always takes the operator's safety into consideration when designing farm machinery by covering exposed moving parts for his protection; however, some areas cannot be guarded or shielded in order to assure proper operation.

This safety alert symbol means ATTENTION! BE CAREFUL! YOUR SAFETY IS INVOLVED! It stresses an attitude of HEADS UP FOR SAFETY, also read all other decals as they are also safety warnings.

Remember: The careful operator is the best operator. Most accidents are caused by human error. Certain precautions must be observed to prevent the possibility of injury or damage.

Read the **HEADS UP** Rules before you operate our equipment.

DO NOT allow persons other than the authorized adult operator near the machine.
DO NOT clean, adjust, or lubricate the machine when any part is in operation.
DO NOT pass in front of discharge area of machine when implement is in operation.
 Tractor PTO **MUST** match implement PTO. (NEVER USE PTO ADAPTERS.)

IF THE MACHINE BECOMES CLOGGED, DISENGAGE POWER TAKE-OFF; REMOVE KEYS FROM TRACTOR, AND ALLOW ALL MECHANISMS TO STOP BEFORE CLEANING.

KEEP HANDS, FEET, CLOTHING, AND HAIR AWAY FROM ALL MOVING PARTS WHEN MACHINE IS IN OPERATION. LOOSE OR FLOPPY CLOTHING SHOULD NOT BE WORN BY THE OPERATOR.

STOP ENGINE, WAIT FOR ALL MOVEMENT TO STOP BEFORE LEAVING OPERATOR'S POSITION TO ADJUST, LUBRICATE, CLEAN, OR UNLOAD MACHINES, UNLESS OTHERWISE SPECIFICALLY RECOMMENDED IN THE OPERATOR'S MANUAL.

NEVER START THE MACHINE UNTIL ALL GUARDS AND SAFETY SHIELDS ARE SECURED IN PLACE.

KEEP OFF EQUIPMENT UNLESS SEAT OR PLATFORM FOR OPERATION AND OBSERVATION IS PROVIDED. KEEP ALL OTHERS OFF.

PTO SHIELD MUST ROTATE FREELY AND BE IN PLACE.

ALWAYS RUN PTO STRAIGHT IN LINE TO AVOID AN ACCIDENT BY BREAKAGE.

YOU MUST OBSERVE ALL APPLICABLE TRAFFIC LAWS WHEN TRANSPORTING ON PUBLIC ROADWAYS (WHERE LEGAL TO DO SO), CHECK LOCAL LAWS FOR ALL HIGHWAY LIGHTING AND MARKING REQUIREMENTS AND COMPLY WITH THESE LAWS.

MAKE CERTAIN EVERYONE IS CLEAR OF MACHINE BEFORE STARTING ENGINE OR OPERATION.

PLEASE KEEP ALL DECALS AND SLOW MOVING VEHICLE SIGN CLEAN SO THEY ARE LEGIBLE.

If any decal becomes damaged or lost, call your dealer or our plant for replacement.
 Always use **GENUINE MEYER** replacement parts.

46-0001-22

DECAL A.

PART NO. 46-0001-22



CAUTION: READ ALL DECALS ON THE FORAGE BOX AND IN THIS MANUAL. KEEP THESE DECALS CLEAN AND REPLACE ANY LOST OR DESTROYED DECALS. BECOME FAMILIAR WITH ALL TRUCK OR TRACTOR AND FORAGE BOX CONTROLS.



DECAL B. PART NO. 46-0011-D



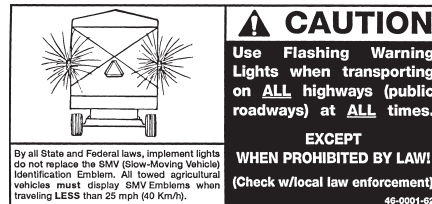
DECAL C. PART NO. 46-0001-20



DECAL D. PART NO. 46-0004-2



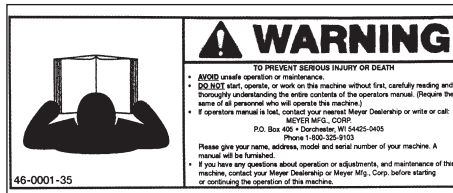
DECAL E. PART NO. 46-0001-4



DECAL F. PART NO. 46-0001-62



DECAL G. PART NO. 46-0001-33



DECAL H. PART NO. 46-0001-35

PRE-OPERATION

Whenever adjusting, cleaning, lubricating or otherwise servicing this forage box, you must shutoff and lockout power to the box. Because this box can be truck mounted or powered by a tractor, methods vary. On truck mounted units, the connection between the PTO and box is permanently installed and not intended to be disconnected. On trucks, disengage the PTO drive, turn off the engine, set the parking brake, remove the ignition keys and keep them in your possession to prevent anyone else from accidentally applying power to the box unexpectedly. On tractor pulled units, the connection between the tractor PTO and box is by a removable PTO drive shaft. For tractors, disengage the PTO drive, turn off the engine, set the brakes and disconnect the PTO drive shaft from the tractor.

Throughout this manual, when directed to shutoff and lockout power, be familiar with the previously described procedures for the type of machine you are operating.

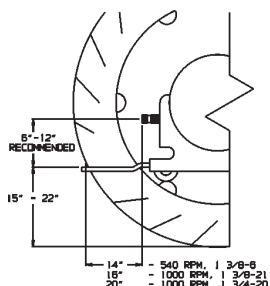
References in this manual are made to the PTO drive shaft and are applicable to tractor pulled MODELS.

Be sure your forage box is properly mounted to the truck frame or to the wagon running gear. Consult your dealer if you have any questions about proper installation. A tie down kit from the manufacturer and illustrated in the parts listing of this manual is available for wagon applications.

Input speed to the forage box line shaft must be 540 rpm maximum. On trucks the PTO drive must be reduced to obtain this speed. For tractors, select the 540 rpm option according to manufacturers instructions.

For tractor pull model, set your tractor drawbar to conform to the standard dimensions shown on the following illustration. This will ensure that the PTO drive shaft will not be over extended.

Before filling the box, slowly engage the PTO and operate box at idle speed to ensure it is operating properly.



DRAWBAR & PTO RELATIONSHIP

! DANGER: DO NOT OPERATE WITHOUT PTO GUARD ON MACHINE AND ON TRACTOR OR TRUCK. FAILURE TO HEED MAY RESULT IN SERIOUS PERSONAL INJURY OR DEATH.

! DANGER: MAINTAIN PTO DRIVE SHAFT GUARDS IN OPERATING CONDITION. REPLACE THEM IF DAMAGED AND NOT TURNING FREELY. FAILURE TO HEED MAY RESULT IN SERIOUS PERSONAL INJURY OR DEATH.

! WARNING: INSPECT REGULARLY THAT ALL CONNECTIONS AND BOLTS ARE TIGHT AND SECURE BEFORE OPERATING. FAILURE TO HEED MAY RESULT IN SERIOUS PERSONAL INJURY OR DEATH.

Inspect the forage box for proper adjustments as this will ensure maximum machine performance. See "Adjustments" section. Grease and oil the forage box as required. See "Lubrication" section.

! WARNING: DO NOT OPERATE UNTIL ALL SHIELDS AND GUARDS ARE IN PLACE AND SECURELY FASTENED. FAILURE TO HEED MAY RESULT IN SERIOUS PERSONAL INJURY OR DEATH.

TRANSPORTING

On tractor pulled MODELS, always disconnect the PTO drive shaft from the tractor and return it to the PTO storage bracket on the box front before transporting. Failure to do this may result in equipment damage.



WARNING: INSTALL A SMV EMBLEM ON REAR OF FORAGE BOX FOR TRANSPORTING ON ROADWAYS. KEEP THIS EMBLEM CLEAN AND BRIGHT. FAILURE TO HEED MAY RESULT IN SERIOUS PERSONAL INJURY OR DEATH.

WARNING

To prevent serious injury or death:

- Read and understand owner's manual before using. Review safety precautions annually.
- No riders allowed when transporting.
- Securely attach to towing unit. Use a high strength appropriately sized hitch pin with a mechanical retainer and attach safety chain.
- Do not exceed 20 mph (33 kph). Slow down for corners and rough terrain.
- Do not drink and drive.
- Before moving running gear, be sure required lights and reflectors are installed and working.
- Before maintenance or repair, stop vehicle, set parking brake, and remove ignition key.
- Place safety stands under frame and chock wheels before working on tires or running gear.
- Maintain wheel bolts at torque as recommended in the manual.
- If equipped with brakes, maintain proper adjustment.

46-0800-8

WARNING

CRUSHING HAZARD

To prevent serious injury or death:

- Keep hands and body out of hitch area when attaching towing vehicle.
- Keep body clear of crush point between towing vehicle and load.

46-0800-6

WARNING

RUN-AWAY HAZARD

To prevent serious injury or death:

- Shift to lower gear before going down steep grades.
- Keep towing vehicle in gear at all times.
- Never exceed a safe travel speed.

46-0800-7

TRACTOR TOWING SIZE REQUIREMENTS

Use the following chart for calculating the minimum tractor weight.

MODEL	FORAGE BOX EMPTY WEIGHT + LOAD = GW	MINIMUM TRACTOR WEIGHT UP TO 20 MPH
8118	5,200 + _____ = _____	2/3 OF BOX GROSS WEIGHT
8120	5,400 + _____ = _____	2/3 OF BOX GROSS WEIGHT
8122	5,700 + _____ = _____	2/3 OF BOX GROSS WEIGHT
8124	6,200 + _____ = _____	2/3 OF BOX GROSS WEIGHT

MATERIAL ESTIMATED WEIGHT PER CUBIC FOOT

MATERIAL	LBS / CU. FT.
SOYBEANS	47 LBS.
COTTON SEED DRY	20 LBS.
CORN (SHELLED)	45 LBS.
CORN SILAGE	30 LBS.
HAYLAGE	20 LBS.
SAWDUST	17 LBS.

SOURCE: ASAE

NOTE: HEAPED LOADS HAVE SIGNIFICANTLY HIGHER CAPACITIES



WARNING: MAKE CERTAIN EVERYONE IS CLEAR OF EQUIPMENT BEFORE APPLYING POWER. FAILURE TO HEED MAY RESULT IN SERIOUS PERSONAL INJURY OR DEATH.

Your running gear for tractor pulled model probably has a telescoping tongue for convenience to hitch up. Always back up and lock this tongue in the operating position after hitching.



WARNING: YOU MUST OBSERVE ALL APPLICABLE TRAFFIC LAWS WHEN TRANSPORTING ON PUBLIC ROADWAYS. CHECK LOCAL LAWS

FOR ALL HIGHWAY LIGHTING AND MARKING REQUIREMENTS. FAILURE TO HEED MAY RESULT IN SERIOUS PERSONAL INJURY OR DEATH.

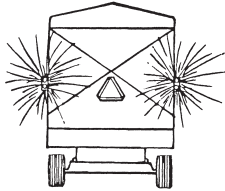


WARNING: DO NOT TOW AT SPEEDS IN EXCESS OF 20 MPH. FAILURE TO HEED MAY RESULT IN SERIOUS PERSONAL INJURY OR DEATH.

Operating speed is dictated by the terrain over which you are traveling. Always use caution. Avoid traveling on slopes or hills that are unsafe.



CAUTION: USE FLASHING WARNING LIGHTS WHEN TRANSPORTING ON ALL PUBLIC ROADWAYS, EXCEPT WHEN PROHIBITED BY LAW.

	<p>CAUTION</p> <p>Use Flashing Warning Lights when transporting on ALL highways (public roadways) at ALL times.</p> <p>EXCEPT</p> <p>WHEN PROHIBITED BY LAW!</p> <p>(Check w/local law enforcement)</p> <p>46-0001-62</p>
<p><small>By all State and Federal laws, implement lights do not replace the SMV (Slow-Moving Vehicle) Identification Emblem. All towed agricultural vehicles must display SMV Emblems when traveling LESS than 25 mph (40 Km/h).</small></p>	

Check for traffic constantly. Be sure you can see that no one is attempting to pass you and that all traffic is sufficiently clear from you before making any turns.

TRUCK MOUNT FORAGE BOXES

Depending on the make and model of truck it may be necessary to install a light converter (MEYER PART #56-0028). Converter will allow signal lights and brake lights to operate according to DOT lighting standard. Call factory for more information.

REAR UNLOAD OPERATION

Whenever adjusting, cleaning, lubricating or otherwise servicing this forage box, you must shutoff and lockout power to the box. Because this box can be truck mounted or powered by a tractor, methods vary. On truck mounted units, the connection between the PTO and box is permanently installed and not intended to be disconnected. On trucks, disengage the PTO drive, turn off the engine, set the parking brake, remove the ignition keys and keep them in your possession to prevent anyone else from accidentally applying power to the box unexpectedly. On tractor pulled units, the connection between the tractor PTO and box is by a removable PTO drive shaft. For tractors, disengage the PTO drive, turn off the engine, set the brakes and disconnect the PTO drive shaft from the tractor.

Throughout this manual, when directed to shutoff and lockout power, be familiar with the previously described procedures for the type of machine you are operating.

References in this manual are made to a PTO drive shaft and are applicable to tractor pulled MODELS.



WARNING: MAKE CERTAIN EVERYONE IS WELL CLEAR OF EQUIPMENT BEFORE APPLYING POWER. FAILURE TO HEED MAY RESULT IN SERIOUS PERSONAL INJURY OR DEATH.

Tractor Pulled:

Always park the forage box and unloading tractor in a straight line. Minimize the unloading angle on the PTO drive shaft to prevent wearing of universal joints when connected to the unloading tractor PTO. Shift the unloading tractor to “Neutral” or “Park”. Set the brakes and turn power off. Remove the PTO drive shaft from the forage box PTO storage bracket and connect it to the tractor PTO. Be sure the PTO yoke is securely locked to the tractor PTO.

Make sure all persons are well clear of the forage box and the unloading area.

The rear discharge door opens automatically by releasing its latches as the main aprons begin to move. The rear discharge door can spring open with extreme force when its latches release. See figure 1. Pressure of forage against the rear door causes it to spring open very quickly.



WARNING: THE REAR DISCHARGE DOOR CAN SPRING OPEN QUICKLY AND WITH EXTREME FORCE. KEEP ALL PERSONS WELL CLEAR OF THE

FORAGE BOX AND UNLOADING AREA. FAILURE TO HEED MAY RESULT IN SERIOUS PERSONAL INJURY OR DEATH.

From the operator’s seat, restart, and **SLOWLY** engage the PTO to start the apron chains and to open the rear door. Once the door opens, regulate the discharge flow with the engine speed. Do not operate above rated engine PTO speed.

Double Door Option:

During unloading, load pressure and chain movement will force the doors to open. Oil will be forced out of the cylinder and into the hydraulic return line. After the box is unloaded, reverse the control lever in the tractor and the return line will become pressurized and force oil back into the cylinder to close the doors. A check valve in the system will keep the box from running backwards. This check valve should be set at 1/4 turn open. **NOTE:** Never force the doors open when the line is pressurized. To open the doors with the box empty, **Shut the Tractor OFF** and move the control lever into the unloading position and pull the doors open slowly. Another option would be to remove the return hose from the tractor, release pressure in the system, remove the hydraulic tip from the hose and let the oil drain into a container while opening the doors. Approximately 1-cup will come out from the cylinder travel.

Unloading is best observed from the operator’s seat. Keep moving the forage box forward to prevent silage from being carried underneath into the main apron chain return area.

The front of the box has a plexiglass window for convenient observation.



WARNING: DO NOT STEP OVER THE PTO DRIVE SHAFT. STAY WELL CLEAR OF THE PTO AT ALL TIMES. FAILURE TO HEED MAY RESULT IN SERIOUS PERSONAL INJURY OR DEATH.



WARNING: DO NOT STEP UP ON ANY PART OF THE FORAGE BOX AT ANY TIME. FAILURE TO HEED MAY RESULT IN SERIOUS PERSONAL INJURY OR DEATH.


The unloading process described is to be performed by the operator alone. This will eliminate unexpected “start-ups” and minimize other hazards that could result by more than one person in control. If the forage box

should become clogged, shut off all power to the forage box and wait for all motion to stop. Shut off and lockout power. Then clean out the machine.

When finished unloading reduce engine speed to idle and disengage the PTO drive. Pull the rear unload box straight ahead to pull the door away from the unloaded pile of forage. When free, gravity will allow the door to swing shut and the door latches will engage the apron chain links to secure it shut. Observe that this happens properly.


Tractor Pulled:

Set the brakes and turn the tractor "OFF". When all movement has stopped, disconnect the PTO drive shaft from the tractor and return it to its storage bracket. Secure it with the rubber tie down strap.

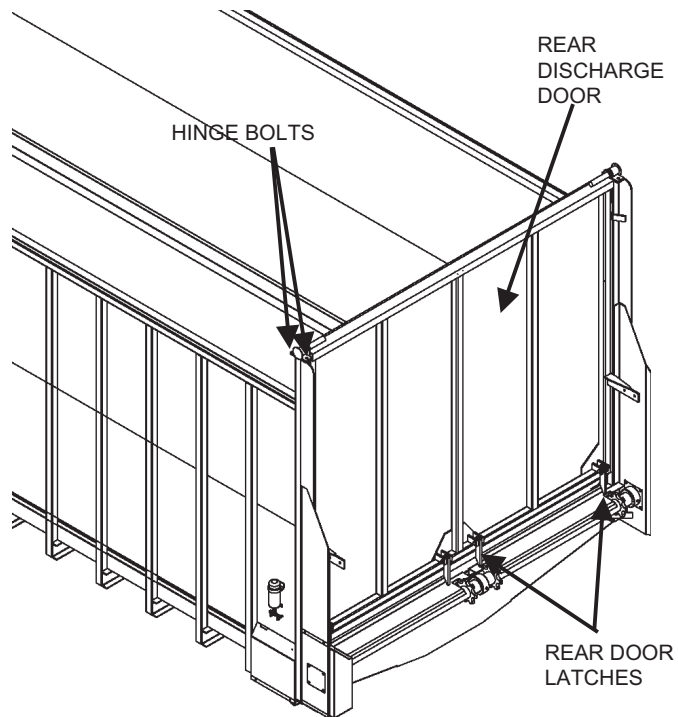
 **WARNING: DISCONNECT PTO DRIVE SHAFT BEFORE CLEANING, ADJUSTING, LUBRICATING OR SERVICING THIS MACHINE. FAILURE TO HEED MAY RESULT IN SERIOUS PERSONAL INJURY OR DEATH.**

Allow box to completely clean out the last load of forage. It is recommended to lube the rear unload box before storage to exclude moisture from bearings. Apply oil to roller chain drives with gravity oil luber and to the apron chains with a brush. This is also a good time to inspect all adjustments and check for parts that need repair or replacement. Performing these tasks now will guarantee that the box is ready for use at the beginning of the next season.

Never use "live" power to aid in the clean-out of a clogged machine. If any mechanism fails, move the forage box to a safe work area and then repair the mechanism before proceeding with unloading of the forage. If repairs require removal of forage from inside the forage box, remove the rear discharge door (bolted hinges on top of each side) and empty the forage manually by hand through the rear opening.

 **DANGER: NEVER ENTER THE FORAGE BOX FOR ANY REASON WITHOUT FIRST SHUTTING OFF AND LOCKING OUT POWER. FAILURE TO HEED MAY RESULT IN SERIOUS PERSONAL INJURY OR DEATH.**

Never enter the forage box for any reason if there is any possibility of power being applied to the unit.



 **FIGURE 1. REAR OPENING DISCHARGE DOOR CAUTION - QUICK RELEASE**

This Page Intentionally Blank

LUBRICATION



WARNING: SHUT OFF AND LOCK OUT POWER BEFORE CLEANING, ADJUSTING, LUBRICATING OR SERVICING THIS MACHINE. FAILURE TO HEED MAY RESULT IN SERIOUS PERSONAL INJURY OR DEATH.

DAILY LUBRICATION

(every 8-10 loads)

L1

Grease (2) PTO drive shaft universal joints (not illustrated). Grease (1) PTO drive shaft telescoping Shaft and tube. Zerk accessible through the plastic guards (not illustrated)

L2

Oil (2) roller chains on apron drive. This is done by opening the ball valve on the gravity oiler while unloading, once per day.



WARNING: DO NOT STAND BEHIND UNIT WHILE PERFORMING THIS OPERATION.

L3

Refill the gravity oiler at the beginning of each day.

L4

Grease two jack shaft bearings. Lube line for bearing under box is routed to the side of the box for convenience.

L5

Oil (4) rear gate latch pivot bolts.

L6

Maintain oil in the gear box at the check plug level.

L7

Grease (3) main apron shaft bearings.

BEGINNING OF CROP MAINTENANCE

(approximately 100-150 loads)

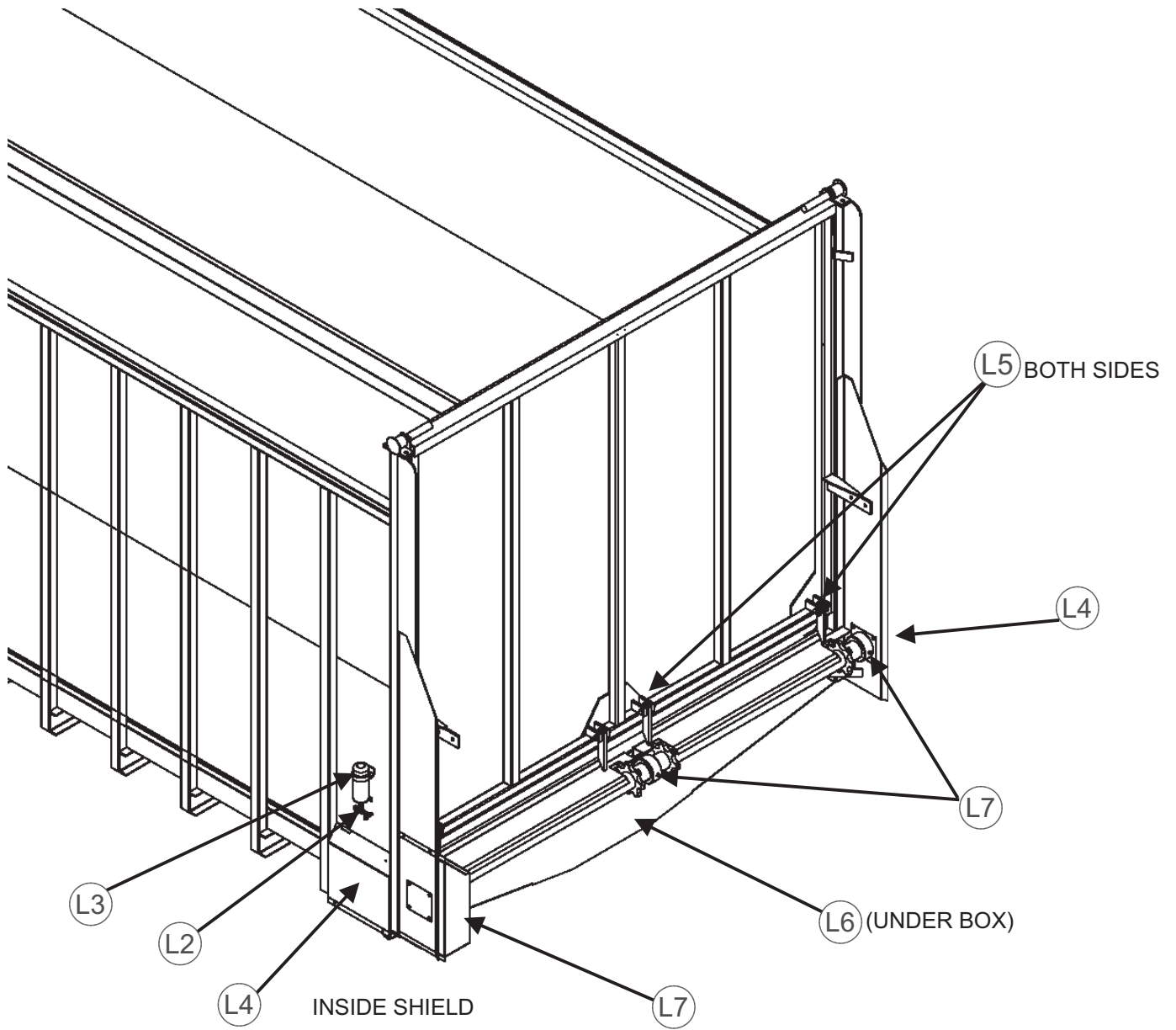
Change oil in the gear box after the first season of use and yearly thereafter. Use #80-90 wt. Gear Lube Oil. Lighter oil may be used in temperatures lower than 20° F.

END OF CROP CLEANUP AND MAINTENANCE

Allow box to completely clean out last load of forage. Clean out all forage material from inside the box and on the outside of the box.

It is recommended to lube the forage box before storage to exclude moisture from bearings. Apply oil to roller chain drives with the gravity oil luber and to the main apron chains with a brush.

It is also a good time to inspect all adjustments and check for parts that need repair or replacement. Performing these tasks now will guarantee that the forage box is ready for use at the beginning of the next season.



LUBRICATION DIAGRAM

ADJUSTMENTS



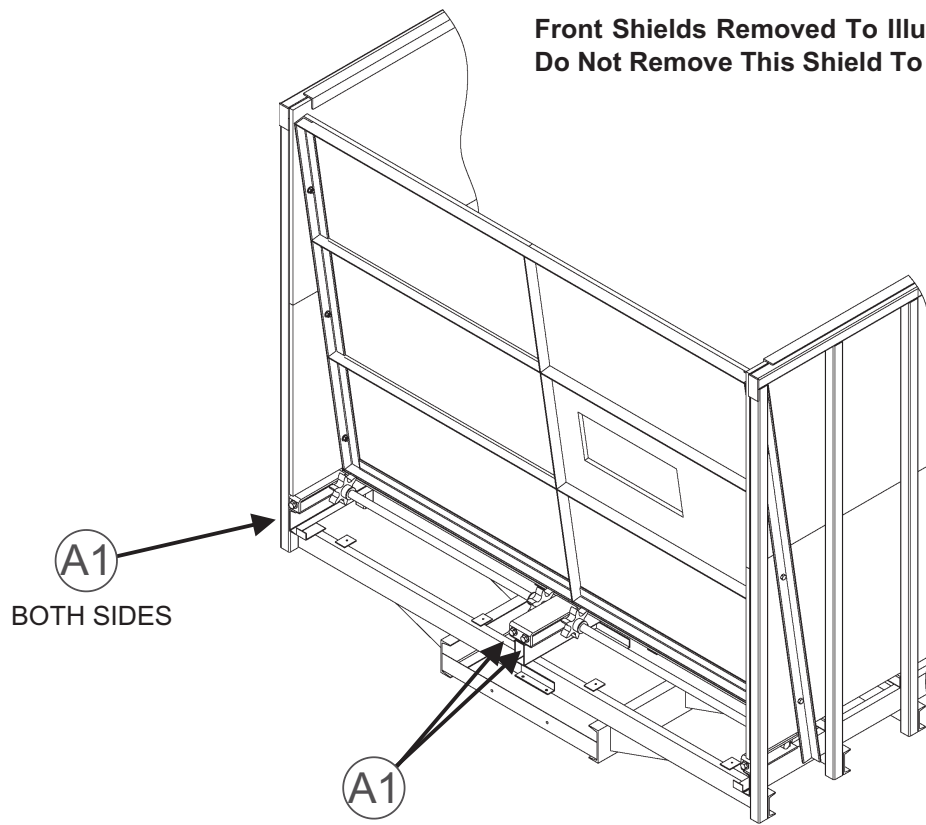
WARNING: SHUT OFF AND LOCK OUT POWER BEFORE CLEANING, ADJUSTING, LUBRICATING OR SERVICING THIS MACHINE. FAILURE TO HEED MAY RESULT IN SERIOUS PERSONAL INJURY OR DEATH.

(A1)

Correct tension on the apron chains is when the apron chain slat is 1/8" to 1/4" off the return slides (three feet from the front of the box). To tighten chains, tighten the adjuster bolts at each end of the front sprocket shafts. Each apron chain has its own sprocket shaft. Tighten the adjuster bolts at each end of the shaft equally. If adjuster bolt reaches maximum travel, remove equal links from each strand. Removable links are provided in the chain.

The roller chain drives are tensioned by automatic spring loaded tension blocks. Periodically eye bolts will need to be adjusted to maintain proper spring tension. Springs should be stretched to obtain approximately 1/16" gap between windings.

**Front Shields Removed To Illustrate Service Components.
Do Not Remove This Shield To Perform The Service.**

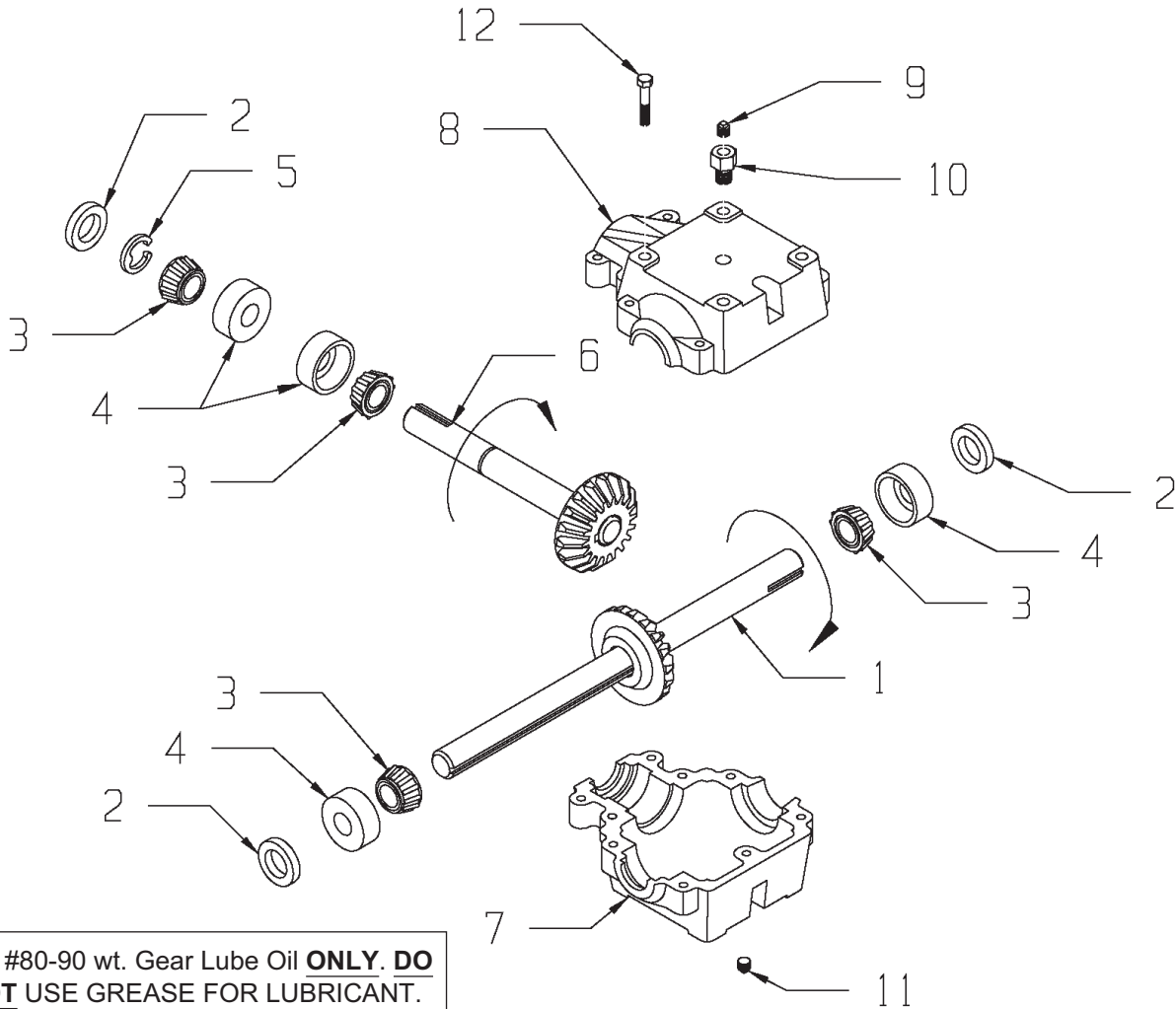


BOTH SIDES

ADJUSTMENT DIAGRAM

REPAIR PARTS

#19-0038 2:1 RATIO GEARBOX



Use #80-90 wt. Gear Lube Oil **ONLY**. **DO NOT** USE GREASE FOR LUBRICANT.

KEY	PART NO.	DESCRIPTION
1	19-0034-4	OUTPUT SHAFT/GEAR ASSEMBLY
2	19-0018-2	SEAL
3	19-0018-3	BEARING CONE
4	19-0016-3	BEARING CUP
5	19-0018-4	RETAINING RING
6	19-0034-3	INPUT SHAFT/GEAR ASSEMBLY
7	19-0043-1	GEARBOX CASTING (TAPPED HOLES)
8	19-0041-2	GEARBOX CASTING (THRU HOLES)
9	19-0002-17	VENT PLUG, 5 PSI
10	19-0023-2	BUSHING, 1/2-14 NPT
11	19-0016-5	PLUG, 1/2-14 NPT

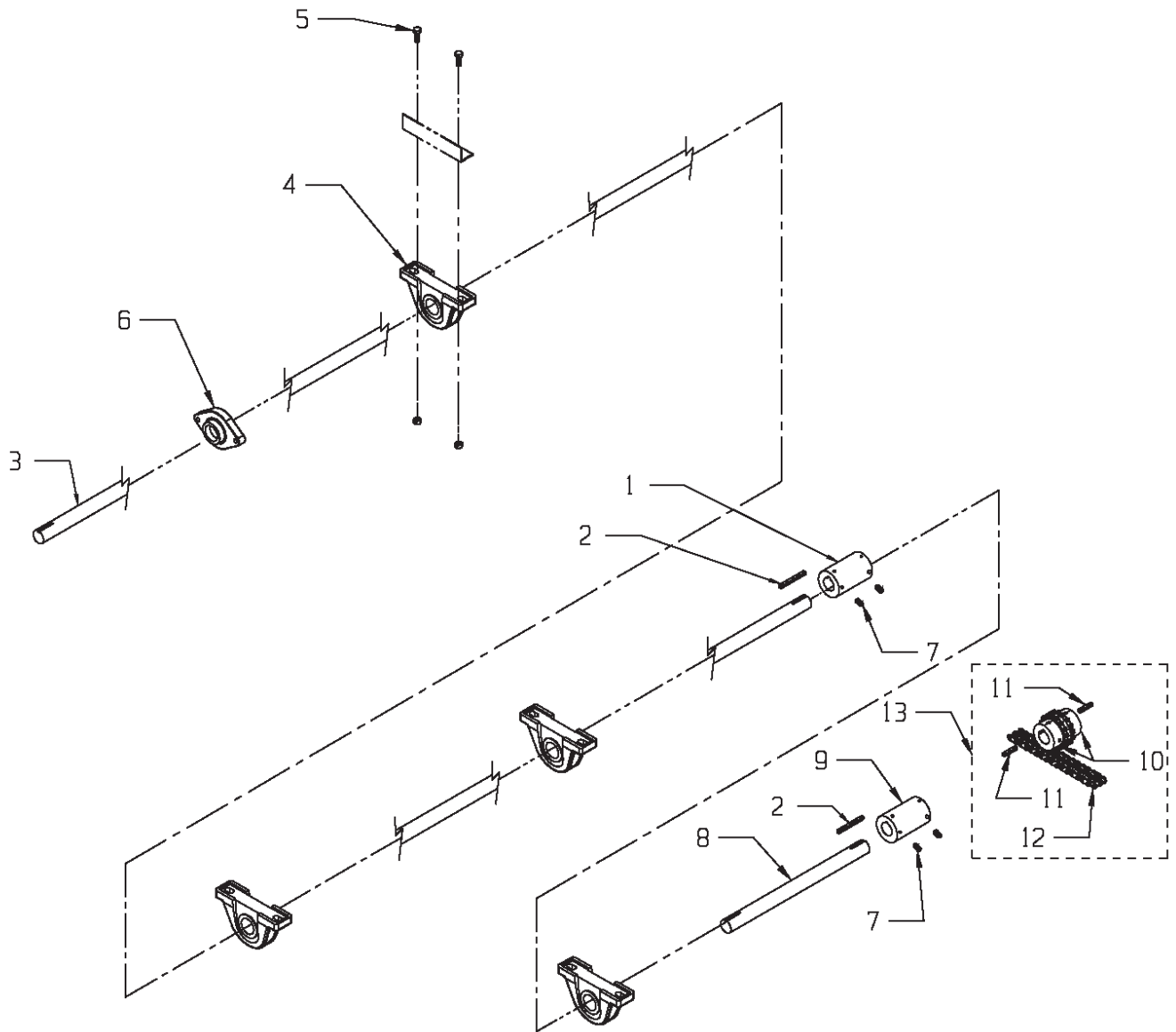
KEY	PART NO.	DESCRIPTION
12	19-0024-20	BOLT, 3/8-16 X 1.50 SHCS

NOTE: Gearbox may be flipped 180 degrees if input power rotation is opposite standard rotation.



CAUTION: VERIFY CORRECT DRIVE ROTATION BEFORE OPERATING. FAILURE TO DO SO MAY RESULT IN SEVERE EQUIPMENT DAMAGE.

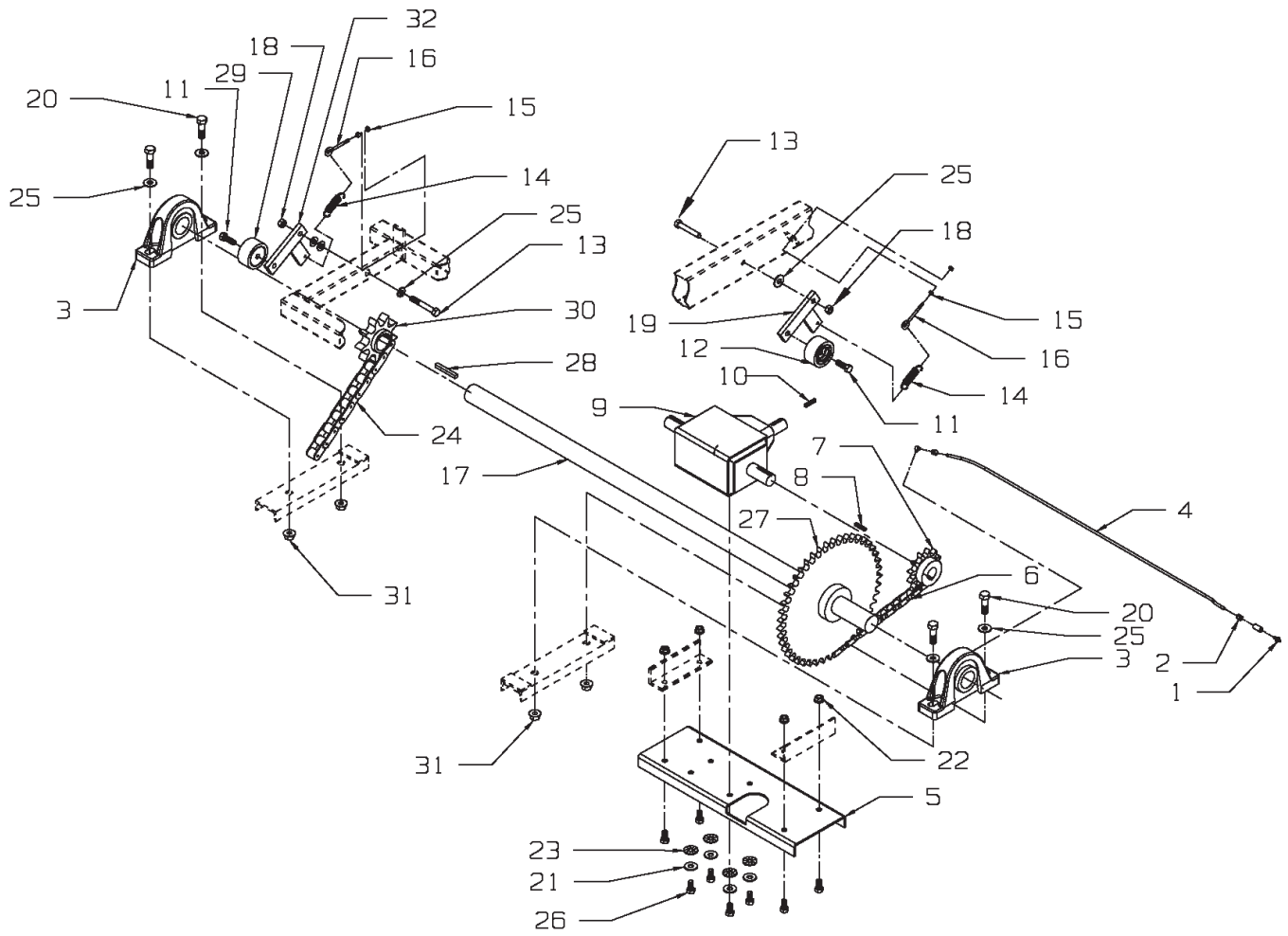
MAIN DRIVE SHAFT (PTO DRIVE)



MAIN DRIVE SHAFT (PTO DRIVE)

KEY	PART NO.	DESCRIPTION
1	37-0007	SHAFT COUPLER 1-1/4" BORE
2	35-0014	KEY, 1/4 X 1/4 X 4-1/2"
3	23-0094	8118 CENTER DRIVE SHAFT, 1-1/4" X 186"
	23-0100	8120 CENTER DRIVE SHAFT, 1-1/4" X 202"
	23-0091	8122/8124 CENTER DRIVE SHAFT, 1-1/4" X 234"
4	14-0032	1-1/4" CAST PILLOW BLOCK BEARING
5	851-3816-1Z	BOLT, 3/8-16 X 1, MACHINE BOLT GRADE 5
6	14-0046	1-1/4" TWO HOLE FLANGE CAST BEARING
7	827-3118-.38	SET SCREW, 5/16-18 X .375
8	23-0098	8124 CENTER DRIVE SHAFT EXT, 1-1/4" X 32"
9	37-0007	SHAFT COUPLER 1-1/4" BORE (PRIOR TO SERIAL #0781227)
10	37-0017-1	1-1/4" BORE CHAIN COUPLER
11	35-0012	KEY, 1/4X1/4X1-1/2"
12	37-0013-2	COUPLER CHAIN
13	37-0020	CHAIN COUPLER ASSEMBLY 1-1/4" W/KEYS (SERIAL #0781227 & LATER)

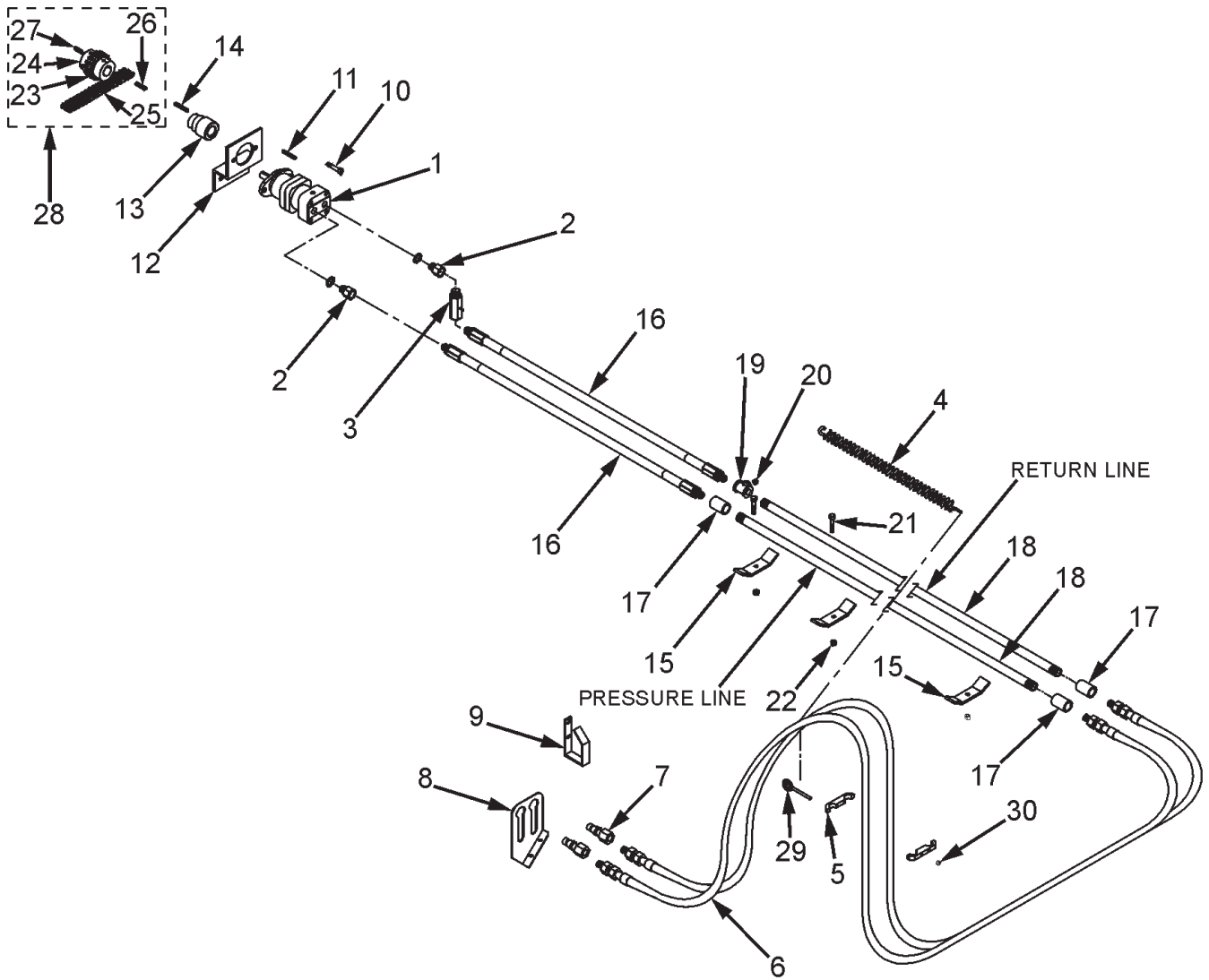
GEARBOX & CHAIN DRIVE



GEARBOX & CHAIN DRIVE

KEY	PART NO.	DESCRIPTION
1	30-0002	ZERK, 1/8 NPT STRAIGHT
2	930-3602	68F-04X02 MALE CONNECTOR BRASS COMPRESSION
3	14-0044	BEARING, 2" PILLOW BLOCK
4	933-3636	46" COPPER GREASE LINE
5	25-8006-1	GEARBOX MOUNT CHANNEL
6	11-0117	#80-59 ROLLER CHAIN
7	10-0080	80B12 1-3/8" BORE 5/16" KWY SPROCKET
8	35-0013	KEY, 5/16 X 5/16 X 1.5
9	19-0038	SUPERIOR GEARBOX 2:1
10	35-0014	KEY, 1/4 X 1/4 X 4.5
11	851-7510-1.75Z	BOLT, 3/4-10 X 1-3/4" HEX HEAD MACHINE BOLT
12	912-0017	1-3/8" NYLON ROLLER COMPLETE
12A	912-0015-1	NYLON ROLLER ONLY
12B	912-0015-2	INNER SLEEVE
13	851-7510-4Z	BOLT, 3/4-10 X 4 HEX HEAD MACHINE BOLT
14	929-3601	SPRING, EXTENSION
15	813-3118-Z	NUT, 5/16-18
16	933-3804	5/16 X 5" EYEBOLT #124032, 5" OVERALL 3" THREADS ZN
17	23-0097	JACK SHAFT, 2" X 59"
18	814-7510-Z	NUT, 3/4-10 CENTER LOCKNUT
19	25-8007-1	80 CHAIN TIGHTENER WELDMENT
20	851-6311-2.5Z	BOLT, 5/8-11 X 2-1/2 HEX HEAD MACHINE BOLT
21	805-0063-Z	WASHER, 5/8" FLAT
22	810-5013-Z	NUT, 1/2-13 SPIN LOCKNUT
23	806-0050-Z	WASHER, 1/2 INTERNAL TOOTH
24	11-0123	#120-37 ROLLER CHAIN
25	805-0063-Z	WASHER, 5/8" FLAT
26	851-5013-1.25Z	BOLT, 1/2-13 X 1.25 HEX HEAD MACHINE BOLT
27	910-0003	SPROCKET, 80B45, 2" BORE, 1/2" KWY
28	35-0024	KEY, 1/2" X 1/2" X 2-1/2" (1045 MAT)
29	912-0016	7/8" NYLON ROLLER COMPLETE
29A	912-0016-1	NYLON ROLLER ONLY
29B	912-0016-2	INNER SLEEVE
30	10-0085	SPROCKET, 120B9, 2" BORE 1/2" KWY
31	810-6311-Z	NUT, 5/8-11 SPIN LOCKNUT
32	25-8031-1	120 CHAIN TIGHTENER WELDMENT

HYDRAULIC PLUMB TO THE FRONT

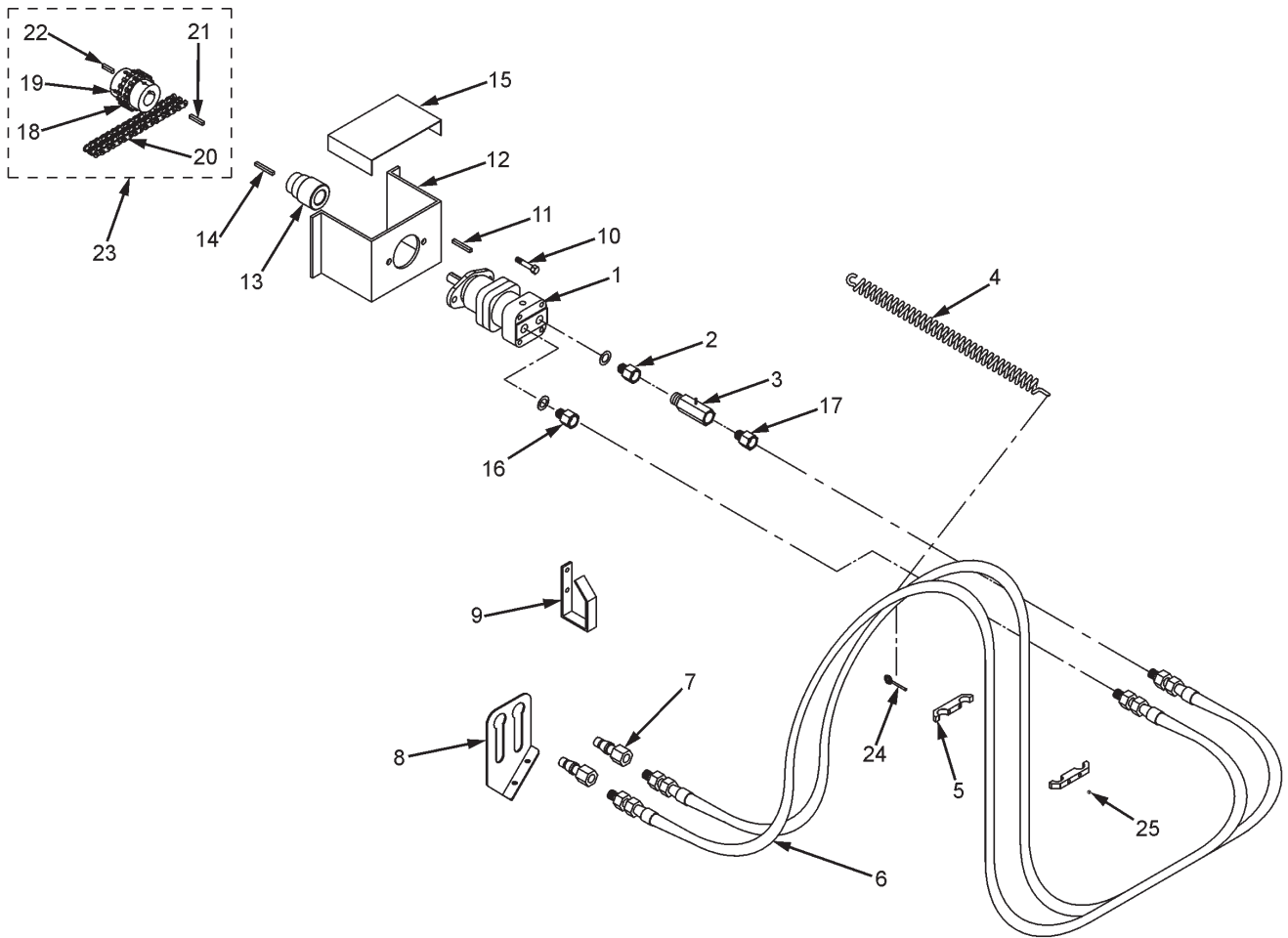


HydPlmgParts-8100

HYDRAULIC PLUMB TO THE FRONT

KEY	PART NO.	DESCRIPTION
1	55-0088	HYDRAULIC MOTOR
2	55-0048	5/8-3/4" ADAPTER O-RING BASE
3	55-0007-B	3/4" CHECK VALVE
4	29-0012	SPRING
5	55-0033	CLAMP ASSEMBLY
6	55-0034	1/2" 2-WIRE X 120" HOSE ASSY.
7	55-0013	PIONEER COUPLER MALE TIP
8	25-0249-1	HOLDER FOR HYDRAULIC HOSE ENDS
9	25-0209	HYDRAULIC HOSE BRACKET
10	851-3816-1Z	BOLT, 3/8-16 X 1" HEX HEAD
11	801	1/4X1" WOODRUFF KEY
12	25-8042-1	HYDRAULIC MOTOR MOUNT BRKT, REAR
13	37-0012	WELDED COUPLER 1" TO 1-1/4" (PRIOR TO SERIAL #0781227)
14	35-0021	KEY, 1/4 X 1/4 X 1-3/4"
15	25-0210-4	HYDRAULIC PIPE HOLDER CLAMP
16	55-0029	2-WIRE 3/4" HOSE X 36" LONG
17	55-0030	3/4" BLACK STEEL COUPLER
18	55-0062	3/4" HYDRAULIC PIPE X 161" - 8118
18	55-0024	3/4" HYDRAULIC PIPE X 185" - 8120
	55-0022	3/4" HYDRAULIC PIPE X 209" - 8122
	55-0020	3/4" HYDRAULIC PIPE X 233" - 8124
19	55-0079	3/4" BLACK TEE FITTING
20	55-0081	3/4" STEEL PLUG
21	851-3816-225	HHCS 3/8-16 X 2-1/4"
22	815-3816-Z	3/8-16 NYLON INSERT LOCKNUT
23	37-0013-1	1" BORE CHAIN COUPLER
24	37-0017-1	1-1/4" BORE CHAIN COUPLER
25	37-0013-2	COUPLER CHAIN
26	801	1/4X1" WOODRUFF KEY
27	35-0021	KEY, 1/4X1/4X1-3/4"
28	37-0019	CHAIN COUPLER ASSEMBLY 1" TO 1-1/4" W/KEYS (SERIAL #0781227 & LATER)
29	811-3118-2Z	5/16"-18 X 2" EYEBOLT
30	810-3118-Z	5/16"-18 SPINLOCK NUT

HYDRAULIC DRIVE (OPTIONAL FRONT MOUNT) #8100 - HYD

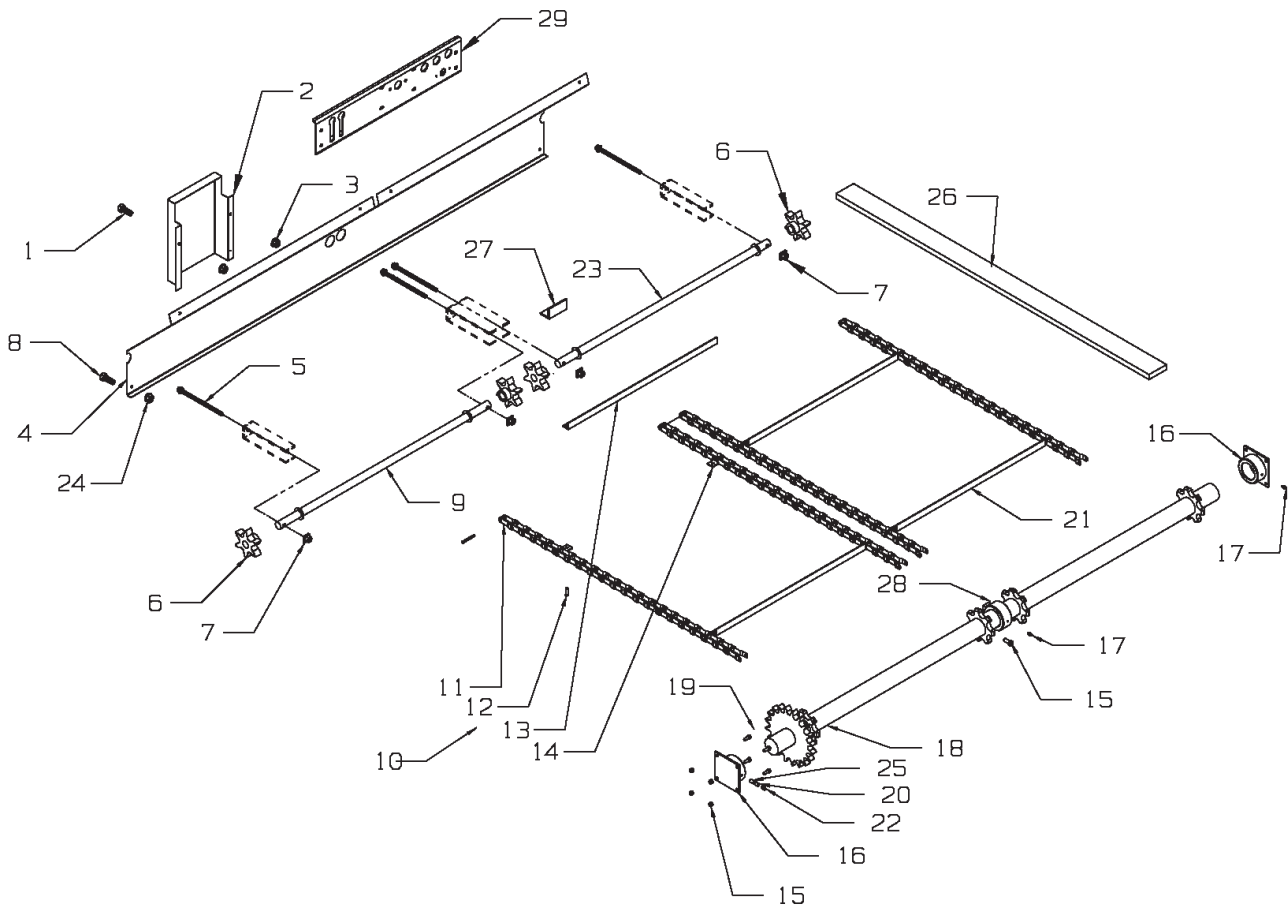


HydDrFitOptParts-8100

HYDRAULIC DRIVE (OPTIONAL FRONT MOUNT) #8100 - HYD

KEY	PART NO.	DESCRIPTION
1	55-0088	HYDRAULIC MOTOR
2	55-0048	5/8-3/4" ADAPTER O-RING BASE
3	55-0007-B	3/4" CHECK VALVE
4	29-0012	SPRING
5	55-0033	CLAMP ASSEMBLY
6	55-0034	1/2" 2-WIRE X 120" HOSE ASSY.
7	55-0013	PIONEER COUPLER MALE TIP
8	25-0249-1	HOLDER FOR HYDRAULIC HOSE ENDS
9	25-0209	HYDRAULIC HOSE BRACKET
10	851-3816-1Z	BOLT, 3/8-16 X 1" HEX HEAD
11	801	1/4X1" WOODRUFF KEY
12	25-8017-1	HYD MOTOR MTG BRKT (PRIOR TO SN 0281243)
	25-8041-1	HYD MOTOR MTG BRKT (SN 0281243 AND LATER)
13	37-0012	WELDED COUPLER 1" TO 1-1/4" (PRIOR TO SERIAL #0781227)
14	35-0021	KEY, 1/4 X 1/4 X 1-3/4"
15	25-8018-1	MOTOR BRACKET COVER (PRIOR TO SN 0281243)
	25-8040-1	MOTOR BRACKET COVER (SN 0281243 AND LATER)
16	55-0085	1/2X5/8" ORB STRAIGHT FITTING
17	55-0044	3/4X1/2" STEEL HEX BUSHING
18	37-0013-1	1" BORE CHAIN COUPLER
19	37-0017-1	1-1/4" BORE CHAIN COUPLER
20	37-0013-2	COUPLER CHAIN
21	801	1/4X1" WOODRUFF KEY
22	35-0021	KEY, 1/4 X 1/4 X 1-3/4"
23	37-0019	CHAIN COUPLER ASSEMBLY 1" TO 1-1/4" W/KEYS (SERIAL #0781227 & LATER)
24	811-3118-2Z	5/16"-18 X 2" EYEBOLT
25	810-3118-Z	5/16"-18 SPINLOCK NUT

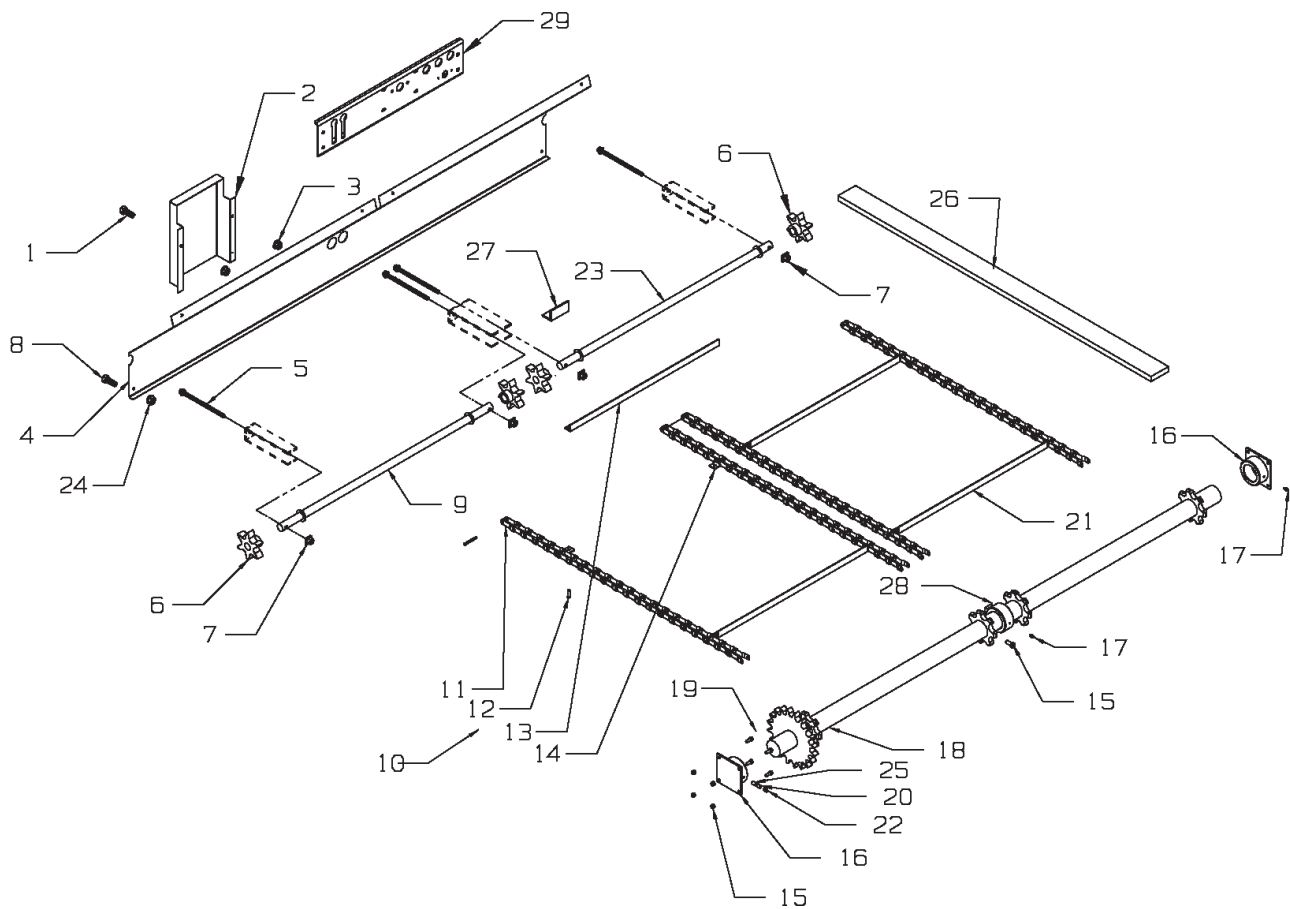
APRON



APRON

KEY	PART NO.	DESCRIPTION
1	851-3816-1Z	BOLT, 3/8-16 X 1" HEX HEAD
2	24-8002	FRONT DRIVE SHIELD (MECHANICAL TRUCK MOUNT)
3	815-3816-Z	3/8-16 NYLON LOCKNUT
4	24-8001	FRONT APRON CHAIN SHIELD (PRIOR TO SN 1281226)
	24-8006	FRONT APRON CHAIN SHIELD (SN 1281226 & LATER)
5	25-8009	APRON CHAIN TIGHTENER BOLT
6	10-0075	IDLER SPROCKET W/BUSHING
	13-0018	BUSHING, 1-1/4" ID X 1-5/8" OD X 1-1/2" LONG
7	25-8010	TIGHTENER BLOCK WELDMENT
8	851-3118-1Z	BOLT, 5/16-18X1" HEX HEAD
	805-0025-Z	WASHER
9	23-0095	LEFT HAND IDLER SHAFT ASSEMBLY (PRIOR TO SN 1281226)
	23-0108	LEFT HAND IDLER SHAFT ASSEMBLY (SN 1281226 & LATER)
10	11-0125-D	MAIN APRON CHAIN ASSY (24 FT.) 667XH (PRIOR TO SERIAL #0881276 & SERIAL # 1181278 AND LATER)
	11-0125-K-T	MAIN APRON CHAIN ASSY (24 FT.) 667K (SERIAL #0881276 THRU # 1181277)
	11-0107-D	MAIN APRON CHAIN ASSY (22 FT.) 667XH (PRIOR TO SERIAL #0881276 & SERIAL # 1181278 AND LATER)
	11-0107-K-T	MAIN APRON CHAIN ASSY (22 FT.) 667K (SERIAL #0881276 THRU #1181277)
	11-0131-D	MAIN APRON CHAIN ASSY (20 FT.) 667XH (PRIOR TO SERIAL #0881276 AND SERIAL #1181278 AND LATER)
	11-0131-K-T	MAIN APRON CHAIN ASSY (20 FT.) 667K (SERIAL #0881276 THRU 1181277)
	11-0121-D	MAIN APRON CHAIN ASSY (18 FT.) 667XH (PRIOR TO SERIAL #0881276 AND SERIAL #1181278 AND LATER)
11	11-0107-2-D	PINTLE CHAIN LINK-D667XH (PRIOR TO SERIAL #0881276 AND SERIAL #1181278 AND LATER)
	11-0160-1-2	PINTLE CHAIN LINK-D667K (SERIAL #0881276 THRU #1181277)
12	11-0107-6	RIVET, 7/16 X 1"
13	11-0107-5	SLAT
14	11-0107-3-D	ATTACHMENT LINK-D667XH (PRIOR TO SERIAL #0881276 AND SERIAL #1181278 AND LATER)
	11-0160-1-1	ATTACHMENT LINK-D667K (SERIAL #0881276 THRU #1181277)
15	810-5013-Z	1/2-20 SPIN LOCKNUT
16	14-0041	RH/LH MAIN DRIVE SHAFT BEARING ASSEMBLY
	14-0043-1	MAIN ROLLER BEARING ONLY
17	30-0002	1/8" NPT STRAIGHT ZERK
18	23-0096-HD	MAIN DRIVE SHAFT ASSEMBLY
19	851-5013-1.25Z	BOLT, 1/2-13 X 1-1/4" HEX HEAD
20	30-0009	COUPLER 1/8" NPT X 3/4" LONG
21	11-0107-1-D	667XH SLAT W/ATTACHMENT LINKS (PRIOR TO SERIAL #0881276 AND SERIAL #1181278 AND LATER)
	11-0107-1-K	667K SLAT W/ATTACHMENT LINKS (SERIAL #0881276 THRU #1181277)
22	30-0006	1/8" NPT X 90 DEGREE ZERK

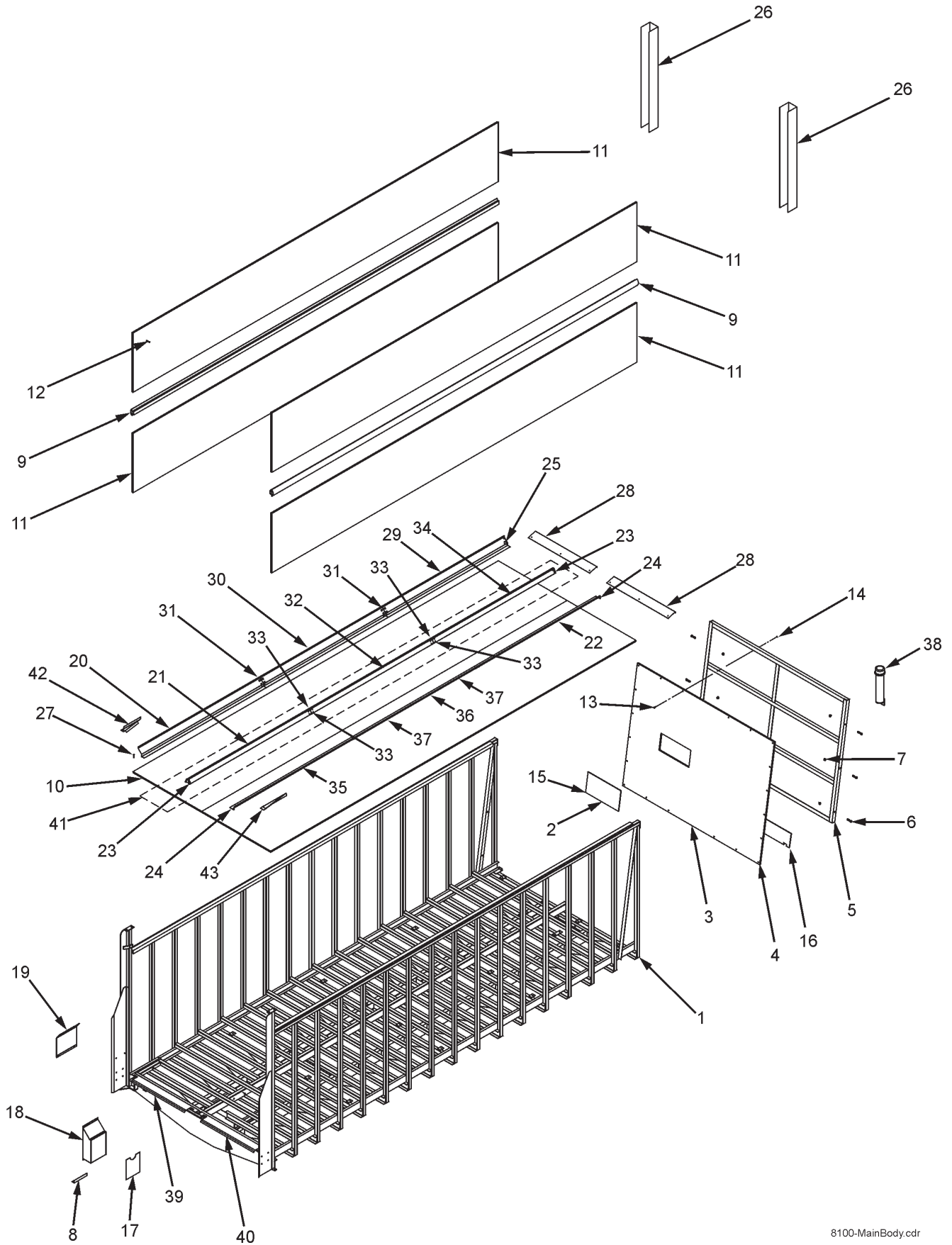
APRON



APRON

KEY	PART NO.	DESCRIPTION
23	23-0090	RH IDLER SHAFT ASSEMBLY (PRIOR TO SN 1281226)
	23-0107	RH IDLER SHAFT ASSEMBLY (SN 1281226 & LATER)
24	815-3118-Z	5/16-18 NYLOC NUT
25	30-0016	1/8" NPT CLOSE NIPPLE
26	701-.75-1.75-16	CHAIN RETURN SLIDE RAIL (AS REQUIRED)
	701-.75-1.75-18	CHAIN RETURN SLIDE RAIL (AS REQUIRED)
	701-.75-1.75-20	CHAIN RETURN SLIDE RAIL (AS REQUIRED)
27	25-8000-1	FRONT GATE CENTER SUPPORT (PRIOR TO SN 1281226)
	25-8000-2	FRONT GATE CENTER SUPPORT WELDMENT (SN 1281226 & LATER)
28	14-0048	REPLACEMENT SPLIT CENTER BEARING ASSEMBLY
29	100-8020-65	FRONT STRINGER SUPPORT PLATE

8100 MAIN BODY

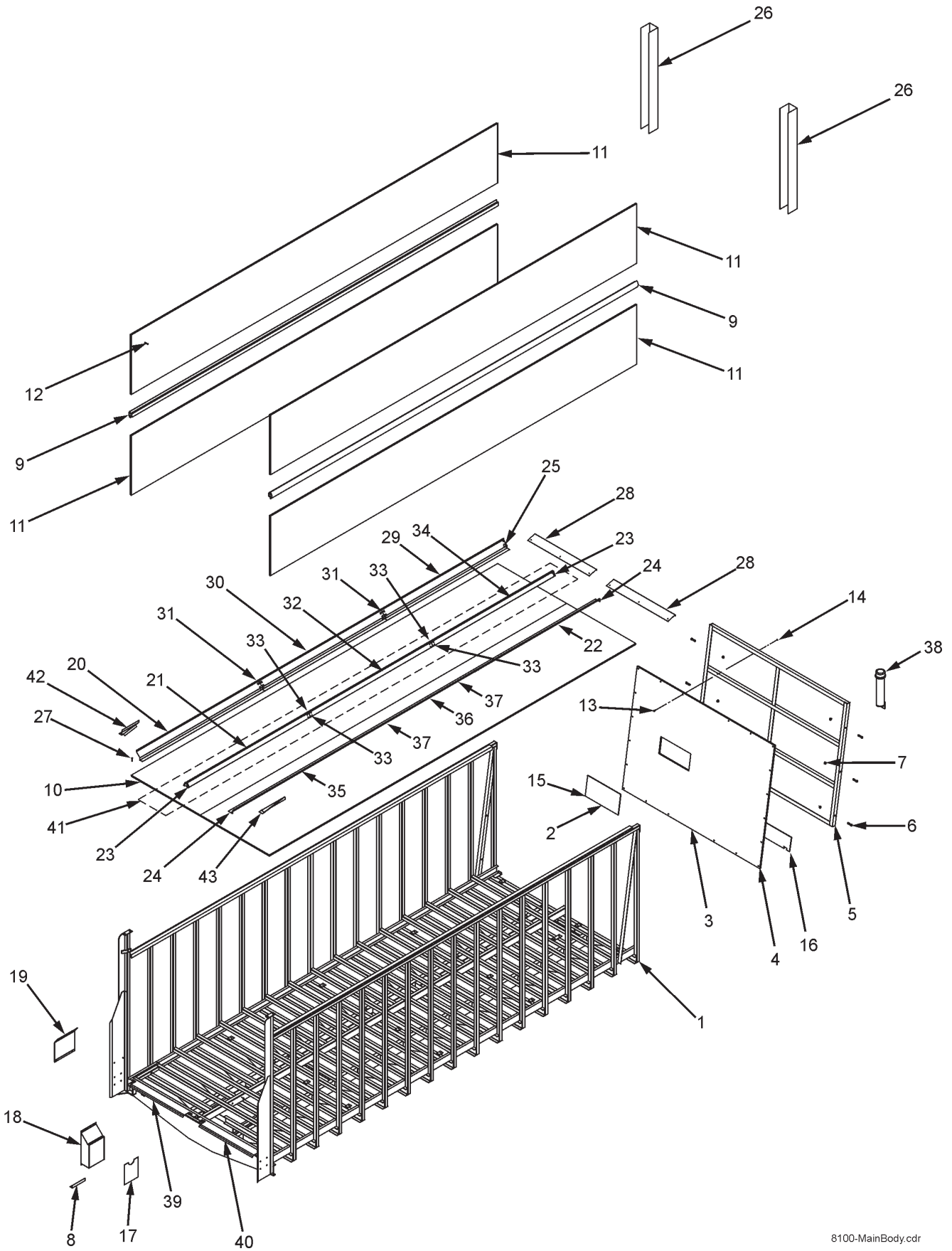


8100-MainBody.cdr

8100 MAIN BODY

KEY	PART NO.	DESCRIPTION
1	100-8022	8124 MAIN FRAME & SIDE ASSY
	100-8020	8122 MAIN FRAME & SIDE ASSY
	100-8023	8120 MAIN FRAME & SIDE ASSY
	100-8021	8118 MAIN FRAME & SIDE ASSY
2	49-0089	PLEXIGLASS VIEWING WINDOW
3	100-8010-8	FIBERGLASS PLYWOOD PANEL (WITH VIEWING HOLE) 96.5 X 69.75"
4	708-96.5-69.75	FIBERGLASS PLYWOOD PANEL 96.5 X 69.75"
5	100-8010	FRONT GATE ASSEMBLY COMPLETE
	100-8010-1	FRONT GATE WELDED FRAME ONLY
6	851-5013-1.5Z	1/2-13 X 1-1/2" HEX HEAD BOLT
7	810-5013-Z	1/2-13 SPIN LOCKNUT
8	24-8005-1	SHIELD BOTTOM SEAL, 120 DRIVE CHAIN
9	33-1008	PLYWOOD TEE MOLDING (BY THE FOOT)
10	709-48-206.5	8118 FLOOR PANEL 48 X 206-1/2"
	709-48-222.5	8120 FLOOR PANEL 48 X 222-1/2"
	709-48-254.5	8122 FLOOR PANEL 48 X 254-1/2"
	8100-SL-22-PKG	8122 UHMW POLY FLOOR TO REPLACE POLY BONDED PLYWOOD PKG
	709-48-287	8124 SUPERSLICK FLOOR PANEL 48 X 287"
	8100-SL-24-PKG	8124 UHMW POLY FLOOR TO REPLACE POLY BONDED PLYWOOD
11	708-70.75-264	FIBERGLASS PLYWOOD SIDE PANEL 70.75 X 264" (8118, 8120, 8122)
	708-70.75-296	FIBERGLASS PLYWOOD SIDE PANEL 70.75 X 296" (8124)
12	829-14-1.88	1/4-14 X 1-7/8" SELF TAPPING SCREW
13	850-25201.25Z	1/4-20 X 1-1/4" CARRIAGE BOLT
14	810-2520-Z	1/4-20 SPIN LOCKNUT
15	803-12-.63Z	#12 PHILLIPS PAN HEAD SCREW
16	49-0085	FRONT GATE BELTING
17	24-8005-2	SHIELD, 120 DRIVE CHAIN
18	24-8003	SHIELD, 120 DRIVE CHAIN
19	24-8004	SHIELD, JACK SHAFT
20	25-8020-1	LH REAR/CENTER/FRONT FLOOR CAP 96" (PRIOR TO 09 SERIAL #S)
	25-8125-1	LH REAR FLOOR CAP 120" (SERIAL #09 & LATER)
21	25-8024-1	CENTER REAR FLOOR CHAIN GUIDE 96" (PRIOR TO 09 SERIAL #S)
	25-8119-1	CENTER REAR FLOOR CHAIN GUIDE 120" (09 SERIAL # & LATER)
	25-8027-1	CENTER FLOOR CHAIN GUIDE 96" (PRIOR TO 09 SERIAL #S)
22	25-8144-1	8118 RIGHT FRONT FLOOR CAP 83-1/4" (09 SERIAL # & LATER)
	25-8145-1	8120 RIGHT FRONT FLOOR CAP 99-1/4" (09 SERIAL # & LATER)
	25-8146-1	8122 RIGHT FRONT FLOOR CAP 35-1/4" (09 SERIAL # & LATER)
22	25-8147-1	8124 RIGHT FRONT FLOOR CAP 43-1/4" (09 SERIAL # & LATER)
23	25-8021-1	CENTER FLOOR CHAIN GUIDE END CAP (PRIOR TO 09 SERIAL #S)
	25-8141-1	CENTER FLOOR CHAIN GUIDE END CAP (09 SERIAL # & LATER)
24	25-8023-1	RIGHT FLOOR END CAP
25	25-8019-1	LEFT FRONT FLOOR END CAP
26	100-8070	POLY BOARD END CAP
27	825-3118-1.5	5/16-18X1-1/2" SELF THREADING FLOOR SCREW
28	25-8203-1	FRONT FLOOR COVER

8100 MAIN BODY (CONTINUED)



8100-MainBody.cdr

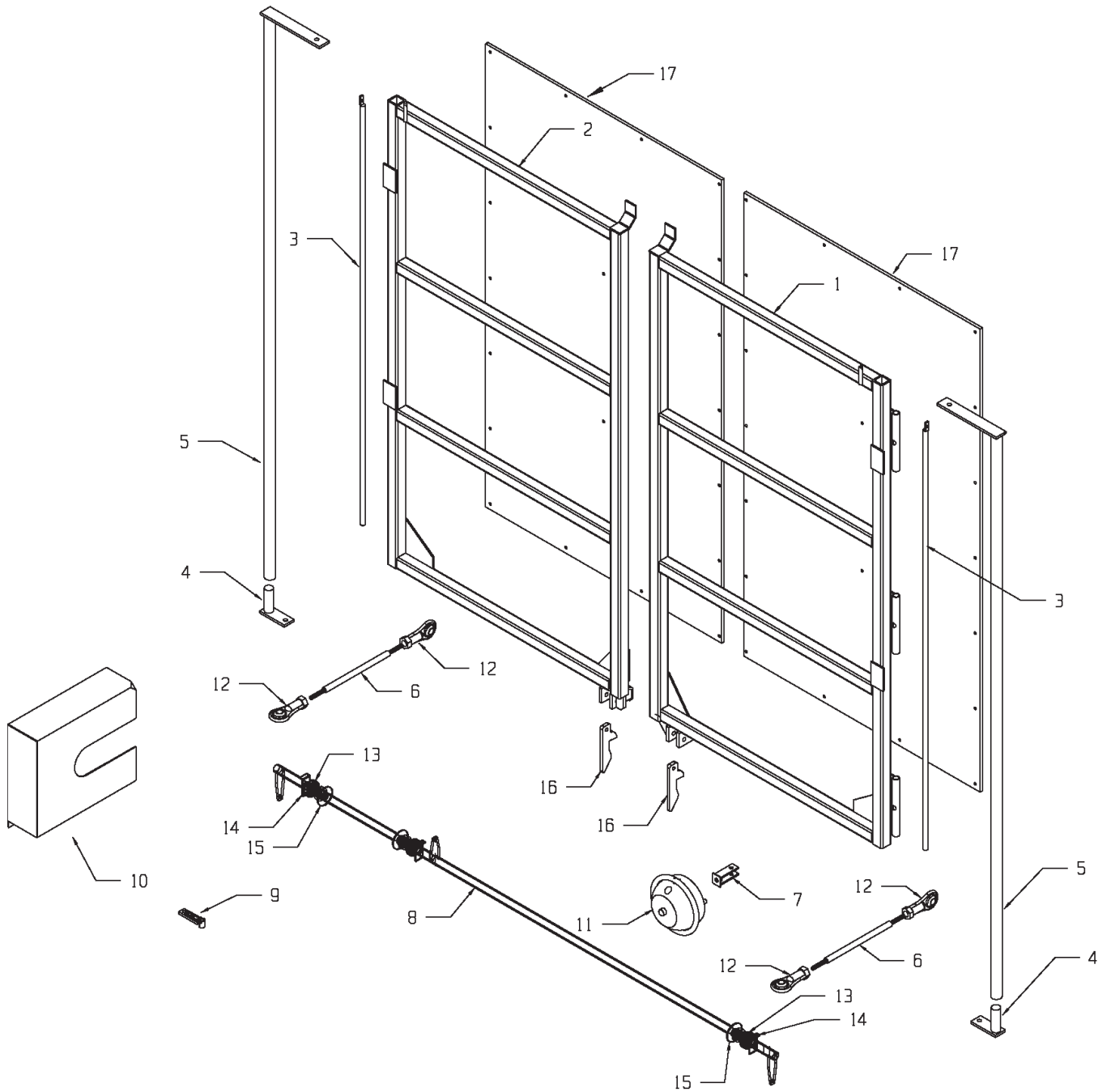
8100 MAIN BODY (CONTINUED)

KEY	PART NO.	DESCRIPTION
29	25-8121-1	8118 LEFT FRONT FLOOR CAP 83-1/4" (09 SERIAL # & LATER)
	25-8122-1	8120 LEFT FRONT FLOOR CAP 99-1/4" (09 SERIAL # & LATER)
	25-8124-1	8122 LEFT FRONT FLOOR CAP 35-1/4" (09 SERIAL # & LATER)
	25-8126-1	8124 LEFT FRONT FLOOR CAP 43-1/4" (09 SERIAL # & LATER)
30	25-8029-1	8118/8120 LH CENTER FLOOR CHAIN GUIDE 48" (PRIOR TO 09 SERIAL #S)
	25-8020-1	8122 CENTER FLOOR CAP 96" (09 SERIAL # & LATER)
	25-8125-1	8124 CENTER FLOOR CAP 120" (SERIAL #09 & LATER)
31	25-8143-1	LEFT FLOOR CAP SUPPORT PIECE (09 SERIAL #S & LATER)
32	25-8024-1	CENTER/REAR FLOOR CHAIN GUIDE 96" (PRIOR TO 09 SERIAL #S)
	25-8028-1	CENTER FLOOR CHAIN GUIDE 48" (PRIOR TO 09 SERIAL #S)
	25-8119-1	CENTER REAR FLOOR CHAIN GUIDE 120" (09 SERIAL # & LATER)
	25-8132-1	CENTER REAR FLOOR CHAIN GUIDE 96" (09 SERIAL # & LATER)
33	25-8149-1	CENTER V SUPPORT PIECE (09 SERIAL #S & LATER)
34	25-8133-1	8118 FRONT CENTER V 87-3/4" (09 SERIAL # & LATER)
	25-8134-1	8120 FRONT CENTER V 103-3/4" (09 SERIAL # & LATER)
	25-8135-1	8122 FRONT CENTER V 39-3/4" (09 SERIAL # & LATER)
	25-8136-1	8124 FRONT CENTER V 47-3/4" (09 SERIAL # & LATER)
35	25-8142-1	RIGHT REAR CHAIN GUIDE 120" (SERIAL # 09 & LATER)
	25-8022-1	RH CHAIN GUIDE 96"
36	25-8030-1	RH CENTER CHAIN GUIDE 48" (PRIOR TO 09 SERIAL #S)
	25-8142-1	8124 RIGHT CENTER CHAIN GUIDE 120" (SERIAL # 09 & LATER)
	25-8022-1	RH CHAIN GUIDE 96"
37	25-6006-1	RIGHT SIDE FLOOR CAP SPLICES (09 SERIAL #S & LATER)
38	33-0044	MANUAL HOLDER W/ CAP
39	100-8020-51	LEFT MAIN ROLLER COVER (WELDED ON)
40	100-8020-50	RIGHT MAIN ROLLER COVER (WELDED ON)
41	8100-CV-22-UPDATE	8122 CENTER V UPDATE KIT
	8100-CV-24-UPDATE	8124 CENTER V UPDATE KIT
42	24-8101-1	DOUBLE DOOR ONLY, REAR LEFT CHAIN RETURN END CAP
43	24-8102-1	DOUBLE DOOR ONLY, REAR RIGHT CHAIN RETURN END CAP
NS	25-8130-1	WELD IN CENTER V SUPPORT PIECE

REAR DOOR

KEY	PART NO.	DESCRIPTION
1	851-5013-2.5Z	1/2-13 X 2.5 HEX HEAD MACHINE BOLT
2	805-0050-Z	1/2" FLAT WASHER
3	100-8012-7	BACK GATE LATCH
4	814-5013-Z	1/2-13 CENTER LOCKNUT
5	851-2520-.75Z	1/4-20 X .75 HEX HEAD MACHINE BOLT
6	49-0086	BACK GATE BELTING
7	25-8005-1	BELTING ATTACHING STRIP, RIGHT HAND
8	25-8005-2	BELTING ATTACHING STRIP, LEFT HAND
9	100-8013	BACK GATE ASSEMBLY COMPLETE, (STANDARD HEIGHT GATE 82-1/2")
	100-8060	BACK GATE ASSEMBLY COMPLETE, (HIGH BACK GATE 94-1/2")
9A	100-8013-1	BACK GATE WELDED ASSEMBLY, (STANDARD HEIGHT GATE 82-1/2")
	100-8060-1	BACK GATE WELDED ASSEMBLY, (HIGH BACK GATE 94-1/2")
10	708-95.5-80.25	FIBERGLASS PLYWOOD PANEL, 95.5 X 80.25"
11	810-5013-Z	1/2-13 SPIN LOCKNUT
12	851-5013-1.5Z	1/2-13 X 1.5 HEX HEAD MACHINE BOLT
13	100-8012-15	BACK GATE HINGE WELDMENT
14	100-8013-6	GATE STOP
15	815-5013-Z	1/2-13 NYLON LOCKNUT
16	810-2520-Z	1/4-20 SPIN LOCKNUT
17	100-8062	RIGHT PIVOT EXTENSION ASSEMBLY (HIGH GATE ONLY)
18	100-8063	LEFT PIVOT EXTENSION ASSEMBLY (HIGH GATE ONLY)
19	100-8060-1-7	HIGH GATE TOP PANEL (HIGH GATE ONLY)

OPTIONAL DOUBLE DOOR



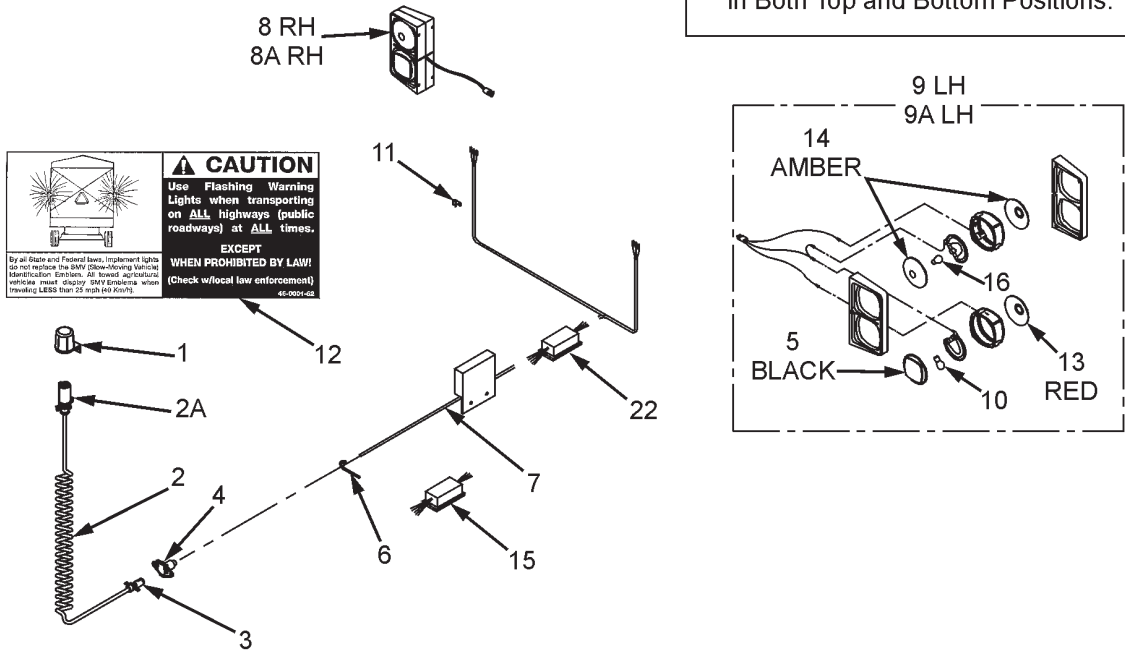
OPTIONAL DOUBLE DOOR

KEY	PART NO.	DESCRIPTION
1	100-8100-20	RIGHT HAND DOOR WELDED ASSEMBLY
	100-8100	RIGHT HAND DOOR COMPLETE
2	100-8101-20	LEFT HAND DOOR WELDED ASSEMBLY
	100-8101	LEFT HAND DOOR COMPLETE
3	100-8102	DOUBLE DOOR GATE HINGE PIN WELDMENT
4	100-8103	DOUBLE DOOR BOTTOM LINKAGE ARM WELDMENT
5	100-8104	DOUBLE DOOR LINKAGE PIPE WELDMENT
6	100-8105	DOUBLE DOOR LINKAGE TIE ROD WELDMENT
7	100-8106	DOUBLE DOOR LINKAGE CLEVIS WELDMENT
8	100-8107	DOUBLE DOOR LINKAGE PIVOT SHAFT WELDMENT
9	100-8108	DOUBLE DOOR SOLENOID MOUNT BRACKET
10	24-8100	DOUBLE DOOR #120 CHAIN SHIELD
11	55-0154	DOUBLE DOOR AIR CHAMBER
12	16-0027	DOUBLE DOOR 1/2" SWIVEL EYELET
13	14-0002-3	1-1/4" BEARING W/LOCK COLLAR
14	14-0003-1	1-1/4" 2-HOLE PILLOW BLOCK FLANGE
15	14-0003-2	1-1/4" 2-HOLE PLAIN FLANGE
16	100-8100-6	DOUBLE DOOR LATCH
	100-8100-6-ASSY	DOUBLE DOOR LATCH ASSY. W/SPRING, ROLL PIN, HARDWARE
17	100-8100-16	DOOR PANEL (PRIOR TO SERIAL NUMBER 1081227) (CLAD TOUGH)
	100-8055-2	DOOR PANEL (SERIAL NUMBER 1081227 AND LATER) (STAINLESS STEEL)
THE FOLLOWING ITEMS ARE NOT ILLUSTRATED		
	49-0033	DOUBLE DOOR BACK GATE BELTING 5" X 42"
	55-0150	3/8" AIR LINE (25' REQUIRED)
	55-0151	3/8" HEX PLUG
	55-0152	3/8 X 3/8 X 90 DEGREE ELBOW
	55-0153	3/8" X 1/8" CONNECTOR
	55-0155	12 VOLT SOLENOID VALVE

HIGHWAY TRANSPORT AG LIGHTS

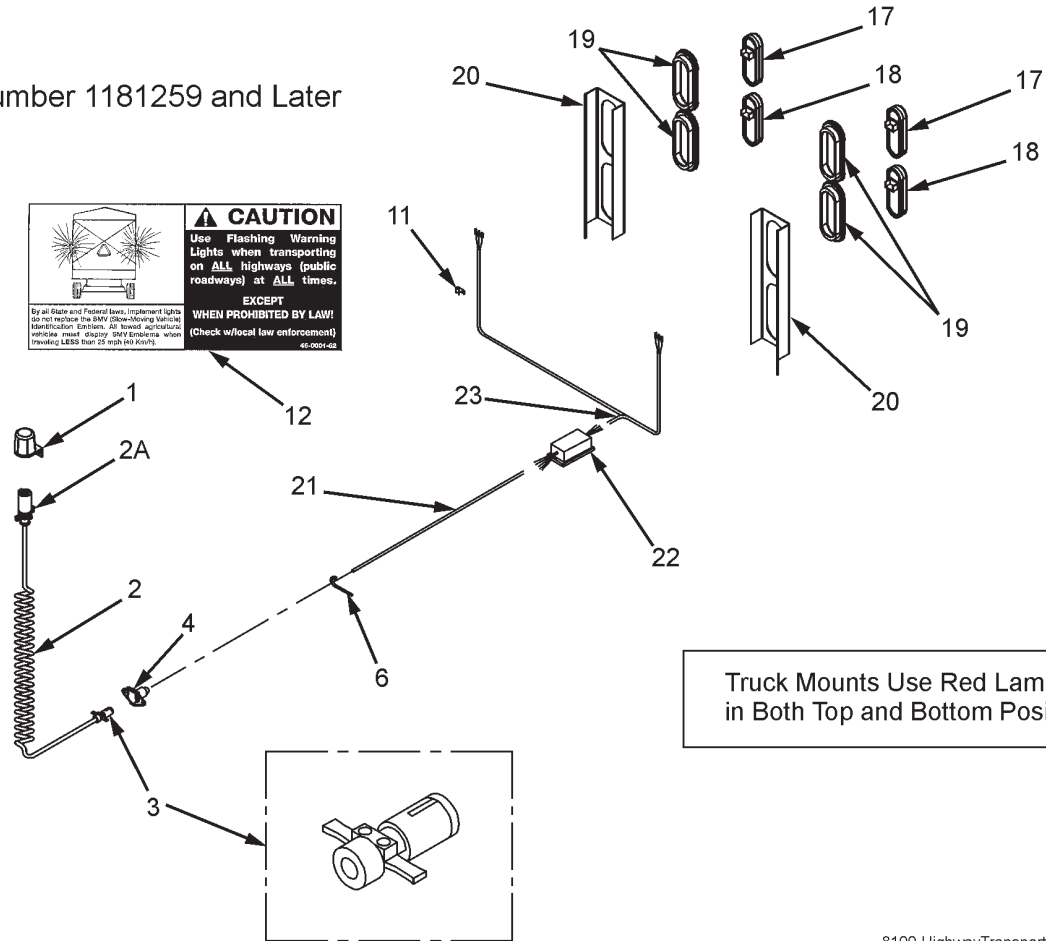
Prior to Serial Number 1181259

Truck Mounts Use Red Lenses in Both Top and Bottom Positions.



Serial Number 1181259 and Later

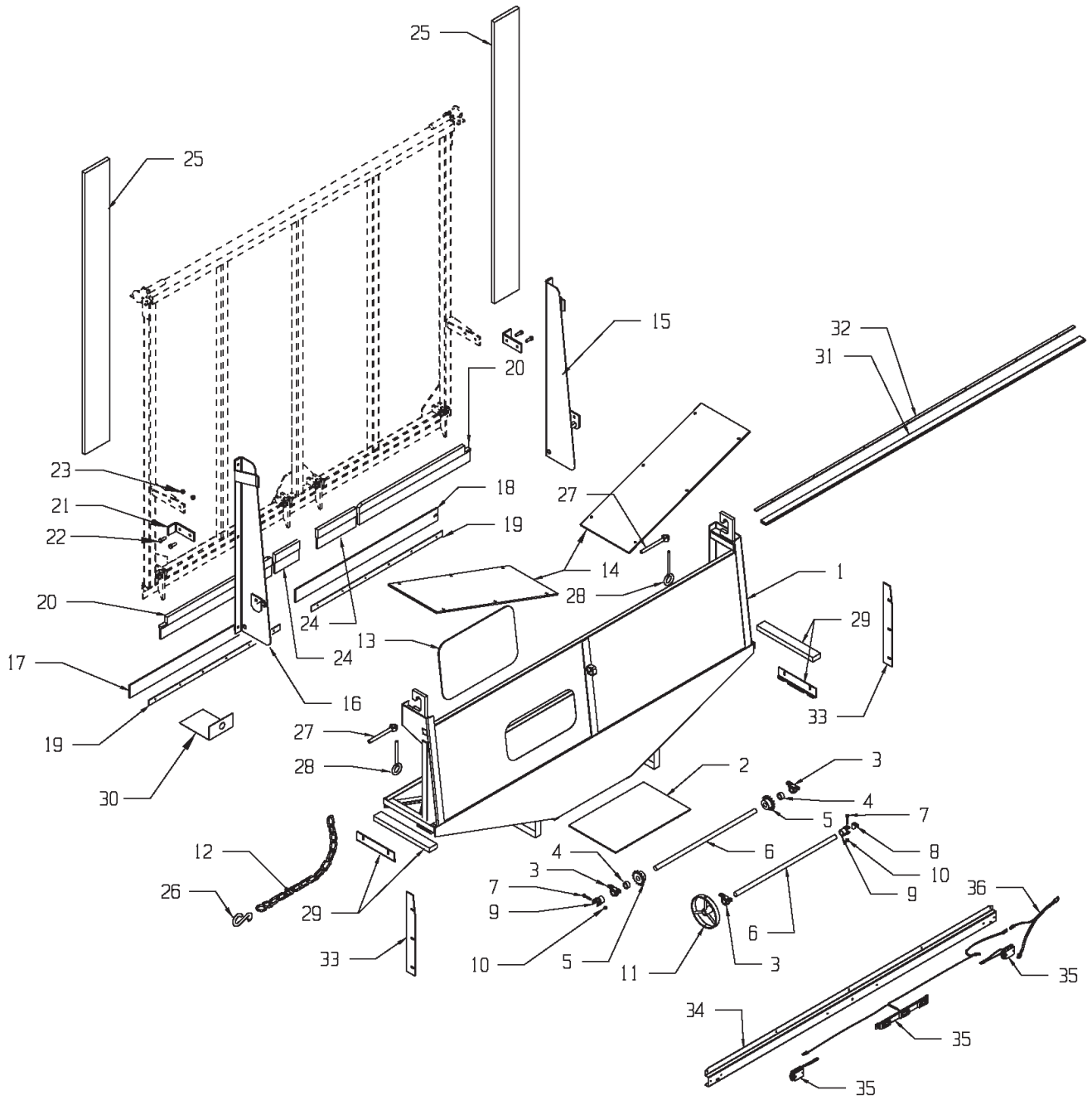
Truck Mounts Use Red Lamps in Both Top and Bottom Positions.



HIGHWAY TRANSPORT AG LIGHTS

KEY	PART NO.	DESCRIPTION
1	56-0009	7-WAY "STOR-A-WAY" (OPTIONAL)
2	56-0005	COIL CABLE ASSEMBLY (OPTIONAL)
2A	56-0005-4	7-CONTACT PLUG END W/SPRING
3	56-0005-1	4 POLE PLUG
4	56-0004	#1232 4-WAY SOCKET (4 PIN)
5	56-0001-3	BEZEL BLANK, BLACK (FIT INSIDE HOUSING) (PRIOR TO SERIAL # 0981255)
	56-0030-3	BEZEL BLANK, BLACK (FIT OVER HOUSING) (SERIAL #0981255 THRU 1181258)
6	32-0026	14" NYLON TIE STRAP
7	56-0003	AG LIGHT HARNESS W/TRI PLUGS (PRIOR TO SERIAL #0681201)
	56-0032	AG LIGHT HARNESS W/MODULE (SERIAL #0681201 THRU SERIAL #1181258)
8	56-0031	DUAL LIGHT RH W/4-PLUG
8A	56-0031-TR	TRUCK MOUNT DUAL LIGHT RH W/4-PLUG
8/8A	56-0034	TRI-PLUG TO 4-PLUG ADAPTER CORD (PRIOR TO SERIAL #0681201)
9	56-0030	DUAL LIGHT LH W/4-PLUG
9A	56-0030-TR	TRUCK MOUNT DUAL LIGHT LH W/4-PLUG
9/9A	56-0034	TRI-PLUG TO 4-PLUG ADAPTER CORD (PRIOR TO SERIAL #0681201)
10	56-0001-4	#1157 DUAL FILAMENT BULB
11	32-0024	3/8" PLATED LOOM CLIP
12	46-0001-62	CAUTION TAIL LIGHT DECAL
13	56-0001-2	RED LENS (FIT INSIDE HOUSING) (PRIOR TO SERIAL #0981255)
	56-0030-2	RED LENS (FIT OVER HOUSING) (SERIAL #0981255 THRU 1181258)
14	56-0001-1	AMBER LENS (FIT INSIDE HOUSING) (PRIOR TO SERIAL #0981255)
	56-0030-1	AMBER LENS (FIT OVER HOUSING) (SERIAL #0981255 THRU 1181258)
15	56-0028	TAIL LIGHT CONVERTER (TRUCK MOUNT ONLY)
16	56-0001-5	#1156 SINGLE FILAMENT BULB
17	56-0081	6" OVAL AMBER LED LIGHT
18	56-0080	6" OVAL RED LED LIGHT
19	56-0082	6" OVAL GROMMET
20	100-8025-72	LED LIGHT BRACKET L/R
21	56-0037	TRAILER CABLE BY THE FOOT (WITH LED LIGHT HARNESS)
22	56-0084	LED AG LIGHT MODULE W/CONNECTORS
	56-0032-1	AG LIGHT MODULE W/CONNECTORS
23	56-0083	LED LIGHT Y-HARNESS (SERIAL #1181259 & LATER)

8100 OPTIONAL GRAIN KIT

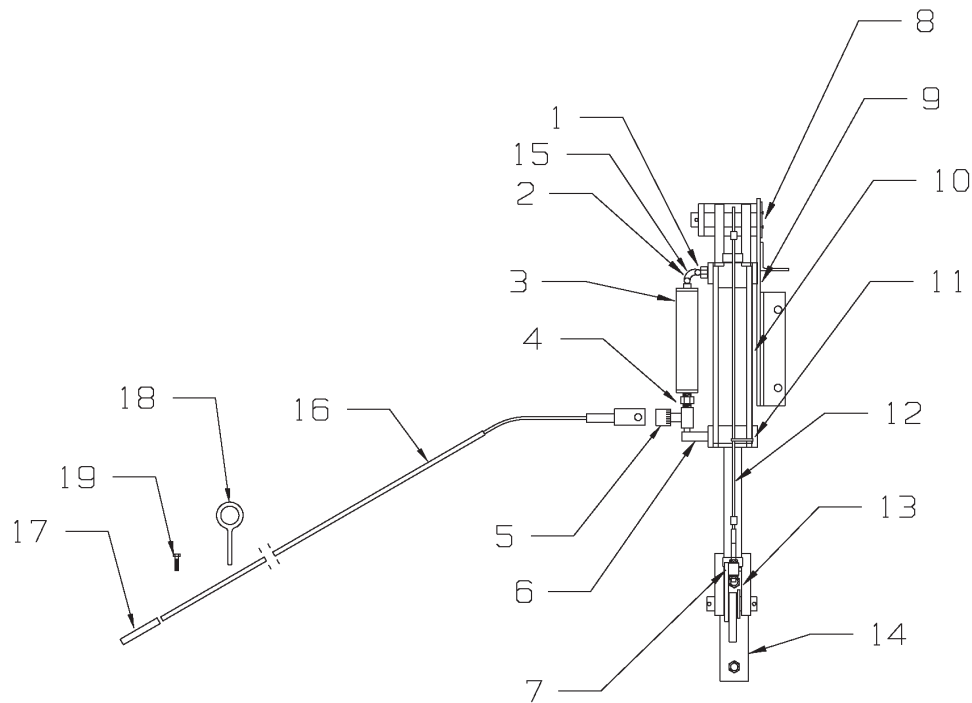


OPTIONAL GRAIN KIT

KEY	PART NO.	DESCRIPTION
1	25-8060	GRAIN KIT MAIN BODY
2	25-8061	GRAIN KIT GATE WELDMENT
3	124	1" PILLOW BLOCK BEARING
4	323	1" LOCK COLLAR
5	10-0001	SPROCKET 50B13, 1" BORE, 1/4" KEYWAY
6	23-0099	GATE SHAFT 1" X 32"
7	851-3816-2Z	3/8-16 X 2" M.B. ZINC
8	15-0006-1	UNIVERSAL KNUCKLE
9	15-0006-2	UNIVERSAL SLEEVE ASSEMBLY
	15-0006	COMPLETE UNIVERSAL KNUCKLE/SLEEVE ASSY.
10	815-3816-Z	3/8-16 NYLON INSERT LOCKNUT
11	25-8062	GRAIN KIT DOOR HANDLE
12	25-8027	HANDLE LOCK CHAIN
13	49-0089	PLEXIGLAS WINDOW 2-1/2" RADIUS
13A	33-0049	WINDOW WEATHER-STRIP (BY THE FOOT) (NOT SHOWN)
14	49-0087	POLY BOTTOM PANEL
15	25-8078	R.H. GATE STOP WELDMENT HI/LO GATE (PRIOR TO SERIAL #0781239)
	25-8178	R.H. GATE STOP HI/LO GATE (SERIAL #0781239 & LATER)
16	25-8079	L.H. GATE STOP WELDMENT HI/LO GATE (PRIOR TO SERIAL #0781239)
	25-8179	L.H. GATE STOP HI/LO GATE (SERIAL #0781239 & LATER)
17	49-0036	L.H. CHAIN RETURN SEAL
18	49-0035	R.H. CHAIN RETURN SEAL
19	25-8067-1	CHAIN RETURN SEAL MOUNT STRAP
20	52-0005-2	24" BROOM (PRIOR TO SERIAL#0781239)
	52-0005-6-1	35-1/2" BROOM NOTCHED (SERIAL #0781239 & LATER)
21	100-8013-6	REAR GATE STOP
22	851-5013-1.5Z	1/2-13 X 1-1/2" M.B. ZINC
23	815-5013-Z	1/2-13 NYLON INSERT LOCKNUT ZINC

KEY	PART NO.	DESCRIPTION
24	52-0005-3	18-1/2" BROOM (PRIOR TO SERIAL #0781239)
	52-0005-6-3	7-3/4" LEFT INNER BROOM (SERIAL #0781239 & LATER)
	52-0005-6-4	12-1/4" RIGHT INNER BROOM (SERIAL #0781239 & LATER)
	52-0005-4	RIGHT INNER 21" BROOM (PRIOR TO SERIAL #0781239)
25	49-0088	SIDE GATE BELTING SEAL 1/8 X 2 1/2 X 66"
26	57-0009-2	S-HOOK
27	33-0028	HANDLE NUT
28	811-5013-4Z	1/2 X4" EYEBOLT (6" OVER-ALL)
29	25-8065	SEAL GASKET (PRIOR TO SERIAL #0781239)
	25-8060-26	LOWER SIDE SEAL FILLER PANEL (SERIAL #0781239 & LATER)
30	25-8066	MAIN ROLLER CENTER MOUNT COVER
31	25-8060-21	REAR BELTING SEAL METAL STRIP
32	49-0042	REAR BELTING SEAL
33	25-8060-27	SIDE SEAL FILLER PANEL (SERIAL #0781239 & LATER)
34	25-8060-23	REAR LIGHT MOUNT BRACKET
35	56-0050	LIGHT HARNESS AND LAMP KIT
	56-0050-LED	LED LIGHT HARNESS AND LAMP KIT
	56-0050-1	CENTER LAMP BAR ONLY
	56-0050-1-LED	LED CENTER LAMP BAR ONLY
	56-0050-2	LEFT REAR LAMP ONLY
	56-0050-2-LED	LED LEFT REAR LAMP ONLY
	56-0050-3	HARNESS ONLY
	56-0050-3-LED	LED HARNESS ONLY
56-0050-4	RIGHT REAR LAMP ONLY	
56-0050-2-LED	LED RIGHT REAR LAMP ONLY	
36	56-0051	LIGHT HARNESS JUMPER-Y-PLUG ASSY.

8100-GDS GATE DELAY PACKAGE (PRIOR TO SN 0781253)



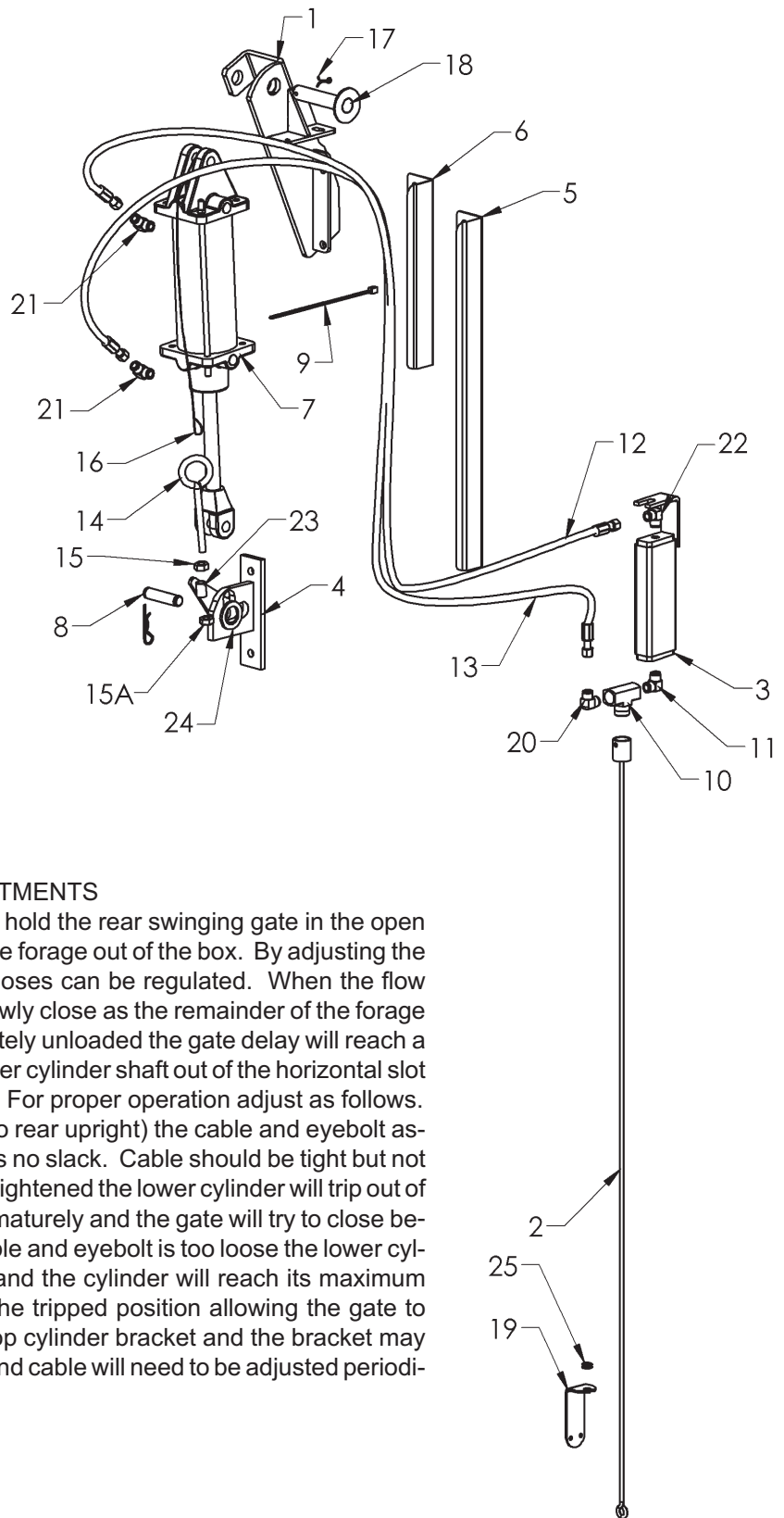
GATE DELAY INSTRUCTIONS & ADJUSTMENTS

The purpose of the gate delay system is to hold the rear swinging gate in the open position until the apron has cleaned all of the forage out of the box. By adjusting the flow control the speed in which the gate closes can be regulated. When the flow control is properly adjusted the gate will slowly close as the remainder of the forage is being unloaded. Once the box is completely unloaded the gate delay will reach a trip position with the trip arm moving the lower cylinder shaft out of the horizontal slot and allow the gate to trip closed and latch. For proper operation adjust as follows. When the gate is completely closed (tight to rear upright) the cable and eyebolt assembly should be adjusted so the cable has no slack. Cable should be tight but not over tightened. If cable and eyebolt is over tightened the lower cylinder will trip out of the L-shaped slot on the lower bracket prematurely and the gate will try to close before the cylinder is fully extended. If the cable and eyebolt is too loose the lower cylinder will not trip out of the L-shaped slot and the cylinder will reach its maximum stroke and the trip arm will still not be in the tripped position allowing the gate to close. The gate will be held open by the top cylinder bracket and the bracket may become damaged over time. The eyebolt and cable will need to be adjusted periodically to maintain proper operation.

8100-GDS GATE DELAY PACKAGE (PRIOR TO SN 0781253)

KEY	PART NO.	DESCRIPTION
0	8100-GDS	GATE DELAY W/ GROUND CONTROL ROD
1	55-0095	1/8" TO 3/8" NPT REDUCER
2	30-0015	1/4X90 DEGREE ELBOW
3	25-8095	OIL RESERVOIR ASSEMBLY
4	55-0097	3/8 TO 3/8" HYDRAULIC NIPPLE
5	55-0094	FLOW CONTROL VALVE
6	55-0096	3/8 NPT X 90 DEGREE MALE PIPE ELBOW
7	25-8096	GATE RELEASE TRIP ARM ASSEMBLY
8	25-8092-1	GATE REGULATOR TOP SHAFT ASSY.
9	25-8090-1	TOP CYLINDER BRACKET ASSY.
10	55-0093	HYD CYLINDER 2" BORE 8" STROKE 18-1/4"
	55-0050-1	CYLINDER SEAL KIT
11	952-0007-1	7-1/4" NYLON TIE STRAP
12	25-8098	CABLE/EYEBOLT ASSY.
13	25-8097-1	LOWER SLEEVE SPACER
14	25-8093-1	LOWER SHAFT PLATE ASSY.
15	25-8095-6	TOP COPPER LINE ASSY.
16	25-8101	GROUND CONTROL ROD ASSY. W/GRIP
17	51-0007	HANDLE GRIP
18	933-3804	5/16 X 4" EYEBOLT
19	825-25-1Z	1/4X1" SELF TAPPING SCREW

**8100-GDS-SM & 8100-GDS-SME
GATE DELAY PACKAGE W/SIDE MOUNT CONTROL
(SN #0781253 & LATER)**



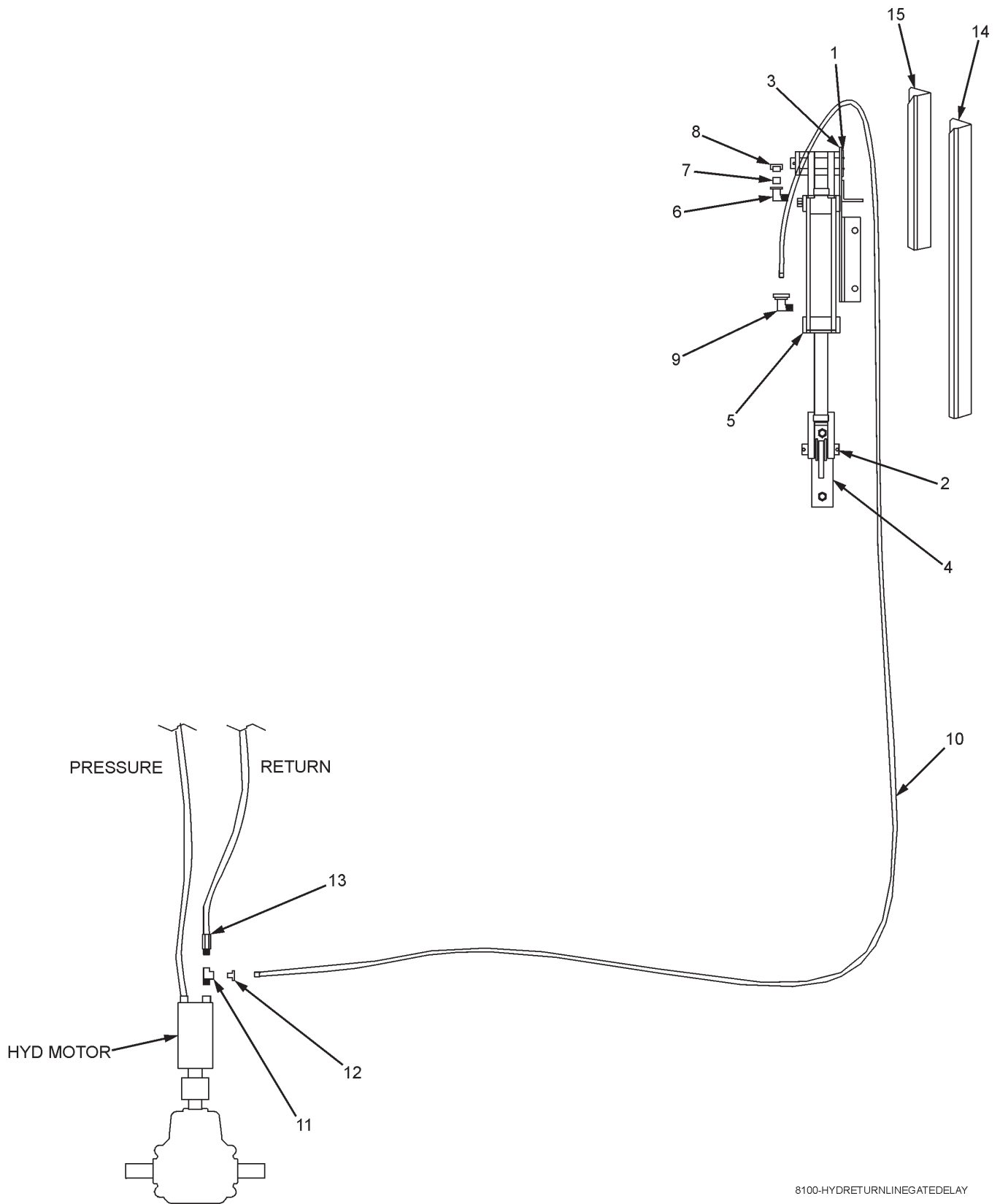
GATE DELAY INSTRUCTIONS & ADJUSTMENTS

The purpose of the gate delay system is to hold the rear swinging gate in the open position until the apron has cleaned all of the forage out of the box. By adjusting the flow control the speed in which the gate closes can be regulated. When the flow control is properly adjusted the gate will slowly close as the remainder of the forage is being unloaded. Once the box is completely unloaded the gate delay will reach a trip position with the trip arm moving the lower cylinder shaft out of the horizontal slot and allow the gate to trip closed and latch. For proper operation adjust as follows. When the gate is completely closed (tight to rear upright) the cable and eyebolt assembly should be adjusted so the cable has no slack. Cable should be tight but not over tightened. If cable and eyebolt is over tightened the lower cylinder will trip out of the L-shaped slot on the lower bracket prematurely and the gate will try to close before the cylinder is fully extended. If the cable and eyebolt is too loose the lower cylinder will not trip out of the L-shaped slot and the cylinder will reach its maximum stroke and the trip arm will still not be in the tripped position allowing the gate to close. The gate will be held open by the top cylinder bracket and the bracket may become damaged over time. The eyebolt and cable will need to be adjusted periodically to maintain proper operation.

**8100-GDS-SM & 8100-GDS-SME
GATE DELAY PACKAGE W/SIDE MOUNT CONTROL
(SN #0781253 & LATER)**

KEY	PART NO.	DESCRIPTION	QTY.
0	8100-GDS-SM	GATE DELAY W/ SIDE MOUNT CONTROL - NO EXTENSION BOX	1
	8100-GDS-SME	GATE DELAY W/ SIDE MOUNT CONTROL - EXTENSION BOX	1
	8100-GDS-SM-UP	UPDATE PACKAGE TO SWITCH FROM GROUND CONTROL ROD TO SIDE MOUNT CONTROL, NO EXTENSION BOX	1
	8100-GDS-SME-UP	UPDATE PACKAGE TO SWITCH FROM GROUND CONTROL ROD TO SIDE MOUNT CONTROL, EXTENSION BOX	1
1	25-8090-1	8100 GATE TOP CYLINDER BRACKET	1
2	25-8105	SIDE MOUNT GRND CONT ROL ROD	1
3	25-8104	SIDE MOUNT OIL RESEVOIR	1
4	25-8093-1	8100 GATE LOWER SHAFT BRACKET	1
5	24-8009	SIDE MT OIL RES 12" HOSE SHIELD 25-1/2"	AR
6	24-8010	SIDE MNT OIL RES HOSE SHIELD 13-1/2"	AR
7	55-0093	HYD CYLINDER 2" BORE 8" STROKE 18-1/4"	1
	55-0050-1	CYLINDER SEAL KIT	
8	955-3802-10	CYLINDER PIVOT PIN WITH CLIP	1
9	952-0001-7	NYLON TIE STRAPS	1
10	55-0094	FLOW CONTROL	1
11	55-0096	3/8" NPTF 90* MALE PIPE ELBOW	1
12	55-0193	1/4"X 52" LONG HOSE HI GATE W/EXT	AR
	55-0192	1/4"X 40" LONG HOSE REG GATE NO/EXT	AR
13	55-0194	1/4"X 62-1/2"" LONG HOSE HI GATE W/EXT	AR
	55-0193	1/4"X 52" LONG HOSE REG GATE NO/EXT	AR
14	811-3816-3Z	3/8-16X3" EYEBOLT ZINC	1
	25-8098	GATE TRIP CABLE ASSEMBLY W/EYEBOLT	1
15	810-3816-Z	3/8 SPIN LOCK NUT	1
15A	815-3816-Z	3/8" NYLOC NUT	1
16	36-0009	1/8" STAINLESS AIRCRAFT CABLE (BY THE FT)	2.41
17	823-19-2	3/16X2" COTTER PIN	1
18	25-8092-1	REAR GATE TOP SHAFT ASSY.	1
19	25-8106-1	GROUND CONTROL ROD BRACKET	1
20	55-0196	3/8MX1/4" SWIVEL FEMALEX90 ELBOW	1
21	55-0195	3/8 MALE-1/4FEMALE STREET ELBOW	2
22	55-0191	1/4" MALE TO 1/4" FEMALE SWIVEL COUPLER	1
23	25-8096	GATE RELEASE TRIP ARM ASSEMBLY	1
24	25-8097-1	GATE LOWER SLEEVE SPACER	1
25	33-1003	RUBBER GROMMET	1

**8100-GDS-RL-PKG
 HYDRAULIC RETURN LINE GATE DELAY
 (HYDRAULIC UNLOAD SN 1081213 & LATER)
 PTO UNLOAD SEE PAGE 44.**

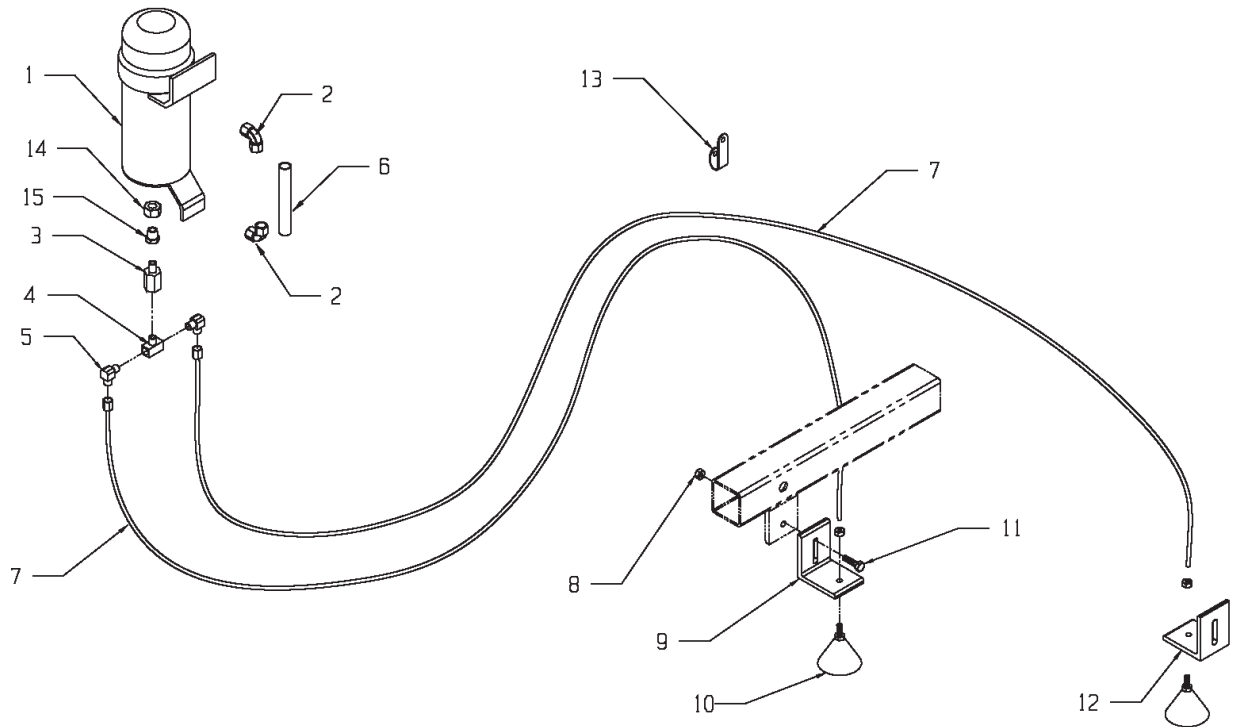


8100-HYDRETURNLINEGATEDELAY

**8100-GDS-RL-PKG
HYDRAULIC RETURN LINE GATE DELAY
(HYDRAULIC UNLOAD SN 1081213 & LATER
PTO UNLOAD SEE PAGE 44.**

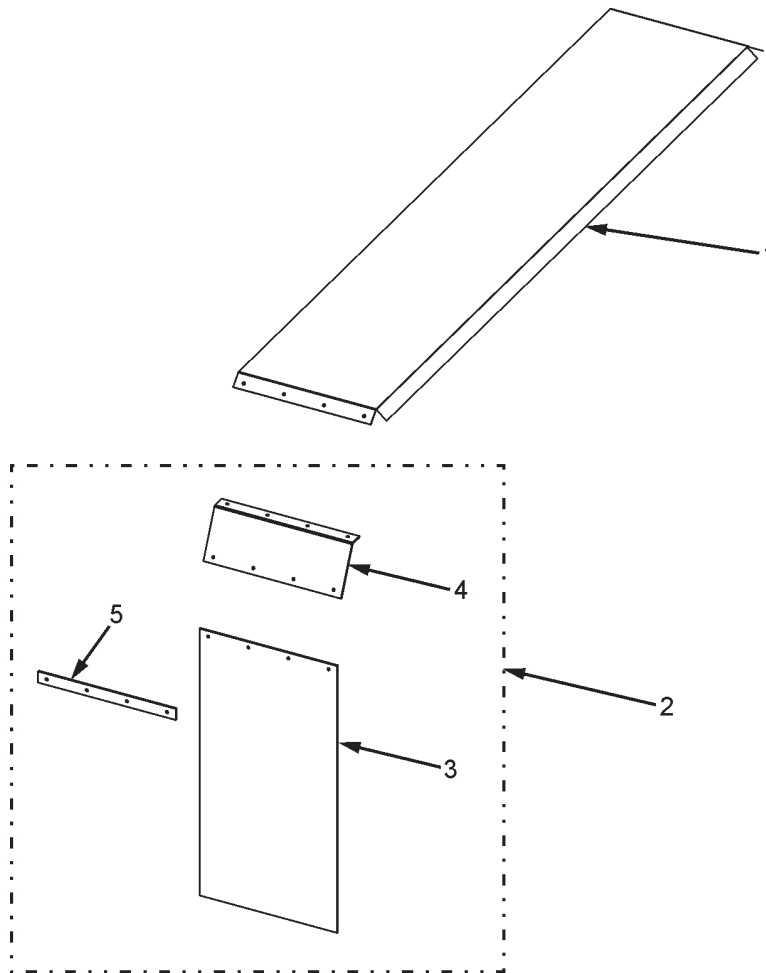
KEY	PART NO.	DESCRIPTION
0	8100-GDS-RL-PKG	RETURN LINE GATE DELAY CLOSING OPTION, NO EXTENSION BOX
	8100-GDS-RLE-PKG	RETURN LINE GATE DELAY CLOSING OPTION, EXTENSION BOX
	8100-GDS-RL-KIT	UPDATE PACKAGE TO SWITCH FROM GROUND CONTROL ROD TO RETURN LINE, NO EXTENSION BOX
	8100-GDS-RLE-KIT	UPDATE PACKAGE TO SWITCH FROM GROUND CONTROL ROD TO RETURN LINE, EXTENSION BOX
1	25-8092-1	GATE REGULATOR TOP SHAFT
2	25-8097-1	LOWER SLEEVE SPACER
3	25-8090-1	TOP CYLINDER BRACKET
4	25-8107	LOWER MOUNT PLATE WELDED ASSEMBLY -RETURN LINE
5	55-0093	HYD CYLINDER 2" BORE 8" STROKE 18-1/4"
	55-0050-1	CYLINDER SEAL KIT
6	55-0195	3/8 MALE X 1/4" FEMALE STREET ELBOW
7	55-0108	1/4 X 1/8" MALE TO FEMALE BUSHING
8	55-0107	1/8" NPT VENT
9	55-0196	3/8M X 1/4" SWIVEL FEMALE X 90 DEGREE ELBOW
10	55-0178	1/4 X 200" HOSE
11	55-0201	3/4" TEE FITTING
12	55-0174	3/4 X 1/4" BUSHING
13	55-0007-B-GDRL	CHECK VALVE W/BACK PRESSURE SPRING
14	24-8009	25-1/2" HOSE SHIELD
15	24-8010	13-1/2" HOSE SHIELD
NS	32-0033	1/2" LOOM CLAMP VINYL COATED
NS	65-0006-5	14" NYLON TIE STRAP
NS	24-8009	25-1/2" HOSE SHIELD
NS	24-8010	13-1/2" HOSE SHIELD
NS	56-0033	3/4" LOOM CLAMP
NS	823-19-2	3/16 X 2" COTTER PIN

ROLLER CHAIN OILER



KEY	PART NO.	DESCRIPTION
1	33-8001-1	OIL RESERVOIR
	33-8002	8100 OIL RESERVOIR COMPLETE W/FITTINGS
2	30-0015	1/4 X 90 DEGREE ELBOW
3	33-8000-6	BALL VALVE
4	33-8001-3	BRASS TEE
5	33-8000-5	90 DEGREE BRASS COMPRESSION FITTING
6	33-8001-2	OILER SITE TUBE
7	952-0001-1-21	TUBING, 5/32" NYLON
8	810-3118-Z	5/16-18 SPIN LOCKNUT
9	33-8000-10	BRUSH HOLDER
10	952-0001-1-25	BRUSH ASSEMBLY WITH 5/32" INSERT & 1/2-20 NUT
11	851-3118-1Z	5/16-18 X 1" HEX HEAD BOLT
12	33-8000-7	#80 CHAIN BRUSH HOLDER, 3/16X1-1/2X10-3/8"
13	08-0050	5/16" LOOM CLAMP
14	33-8001-4	1/8" NPT NUT
15	33-8001-5	1/8" NPT NIPPLE

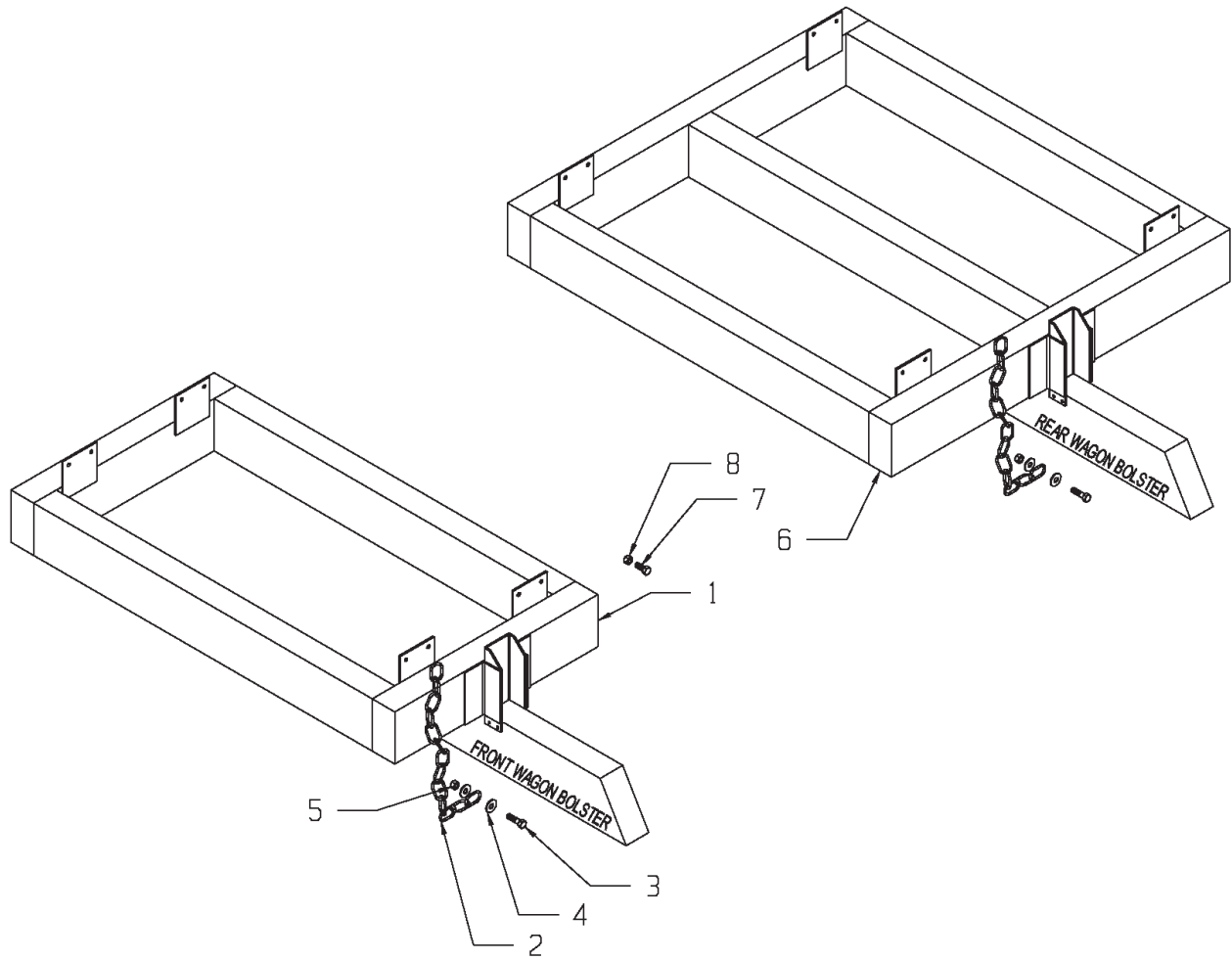
OPTIONAL TRUCK MOUNT FENDER & MUD FLAP



OptFender&MudFlap

KEY	PART NO.	DESCRIPTION	QTY.
1	8100-FENDER	RED FENDER KIT WITH MOUNTING HARDWARE, NO MUD FLAP	1
	25-8008	RED FENDER ONLY	2
2	8100-MUD-FLAP	8100 MUD FLAP & BRACKET KIT	1
3	49-0092	8100 MUD FLAP	2
4	25-8014-1	MUD FLAP MOUNTING BRACKET	2
5	25-8212	MUD FLAP ATTACHING STRIP	2

OPTIONAL WAGON MOUNT KIT (#8100 - WAGON)



KEY	PART NO.	DESCRIPTION
1	25-8025	WAGON MOUNT WELDMENT - FRONT
2	75-0341-4-HD	CHAIN, 61" LONG
3	851-3816-1.5Z	BOLT, 3/8-16 X 1.5 HEX HEAD MACHINE BOLT
4	805-0038-Z	WASHER, 3/8" FLAT
5	814-3816-Z	NUT, 3/8-16 CENTER LOCK
6	25-8026	WAGON MOUNT WELDMENT - REAR
7	851-5013-1.25Z	BOLT, 1/2-13 X 1.25 HEX HEAD MACHINE BOLT
8	815-5013-Z	1/2-13 NYLON LOCKNUT

“SPECIFICATIONS”

TRUCK MOUNT MODELS	8118	8120	8122	8124
DIMENSIONS				
INSIDE LENGTH	18'	20'	22'	24'8"
INSIDE WIDTH	97"	97"	97"	97"
INSIDE HEIGHT - NO EXTENSION	72.5"	72.5"	72.5"	72.5"
INSIDE HEIGHT W/14" EXTENSION	86.5"	86.5"	86.5"	86.5"
OVERALL LENGTH	18'9"	20'9"	22'9"	25'5"
OVERALL WIDTH	102"	102"	102"	102"
OVERALL HEIGHT - NO EXTENSION (TOP OF GATE)	104"	104"	104"	104"
OVERALL HEIGHT W/14" EXTENSION (TOP OF GATE)	115.5"	115.5"	115.5"	115.5"
OVERALL SIDE HEIGHT - NO EXT. / EXT.	90/104"	90/104"	90/104"	90/104"
STRINGER WIDTH (TRUCK/TRAILER MOUNT)	33.5"	33.5"	33.5"	33.5"
CAPACITY (STRUCK LEVEL) CU. FT. - W/O EXT.	880	960	1075	1200
CAPACITY (STRUCK LEVEL) CU. FT. - W14" EXT.	945	1110	1280	1400
SPECIFICATIONS				
MAXIMUM NET LOAD	25 TON	25 TON	25 TON	25 TON
FINAL DRIVE ROLLER CHAIN/CHAINS	#120	#120	#120	#120
APRON CHAINS (PINTLE)	667K	667K	667K	667K
REAR DRIVE SHAFT - 3" OUTSIDE DIAMETER	2.5" HVY TUBE	2.5" HVY TUBE	2.5" HVY TUBE	2.5" HVY TUBE
POWER SOURCE	PTO/HYD	PTO/HYD	PTO/HYD	PTO/HYD
UPRIGHT SPACING	16" ON CTR	16" ON CTR	16" ON CTR	16" ON CTR
UPRIGHT / CROSS MEMBER CONSTRUCTION	2X2 TUBING	2X2 TUBING	2X2 TUBING	2X2 TUBING
UNLOADING TIME (DEPENDENT OF HYD. SYSTEM)	30 SEC.-PTO	30 SEC.-PTO	30 SEC.-PTO	30 SEC.-PTO
FEATURES				
CLAD-TUFF FIBERGLASS WOVEN SIDE PANELS	STD	STD	STD	STD
STAINLESS STEEL SIDE PANELS	OPT	OPT	OPT	OPT
SOLID POLY FLOOR - HIGH MOLECULAR	STD	STD	STD	STD
AUTOMATIC REAR DOOR UNLATCH / LATCH	STD	STD	STD	STD
AUTOMATIC ROLLER CHAIN TIGHTENERS	STD	STD	STD	STD
REAR DRIVE SYSTEM (#120 ROLLER CHAIN)	SINGLE	SINGLE	SINGLE	SINGLE
HYDRAULIC DRIVE	OPT	OPT	OPT	OPT

“SPECIFICATIONS”

SEMI-AUTO ROLLER CHAIN OILER	STD	STD	STD	STD
FRONT GATE VIEWING WINDOW	STD	STD	STD	STD
REAR TRANSPORT LIGHTS W/CORD	STD	STD	STD	STD
PERSONALIZED FARM NAME ON SIDES	STD	STD	STD	STD
OPTIONS				
14" REMOVABLE SIDE EXTENSION (SCREEN OR SOLID)	OPT	OPT	OPT	OPT
FOLD-DOWN FRONT EXTENSION	OPT	OPT	OPT	OPT
REAR GATE DELAY SYSTEM W/GROUND CONTROL	OPT	OPT	OPT	OPT
STAINLESS STEEL SIDE PANELS	OPT	OPT	OPT	OPT
DOUBLE CENTER OPENING DOORS	OPT	OPT	OPT	OPT
HYDRAULIC DRIVE	OPT	OPT	OPT	OPT
GRAIN KIT ASSY (TOP PIVOT DOOR ONLY)	OPT	OPT	OPT	OPT
TRUCK MOUNT KIT W/STEEL FENDERS	OPT	OPT	OPT	OPT
FACTORY INSTALL OF TRUCK MOUNT KIT	OPT	OPT	OPT	OPT
WAGON/TRAILER MOUNT KIT	OPT	OPT	OPT	OPT
TARP SYSTEMS				
FRONT TO BACK SCISSOR TARP (ELECTRIC)	OPT	OPT	OPT	OPT
SIDE-TO-SIDE ROLL TARP (ELECTRIC)	OPT	OPT	OPT	OPT

MEMBER



Manufactured by:
Meyer Mfg. Corp.

County Hwy. A West
P.O. Box 405
Dorchester, Wisconsin 54425-0405
Phone 715-654-5132 • FAX 715-654-5513
1-800-325-9103



www.meyermfg.com

E-mail: sales @meyermfg.com

Farm Equipment Buyers Trust the Name Meyer!

This Page Intentionally Blank

This Page Intentionally Blank

