

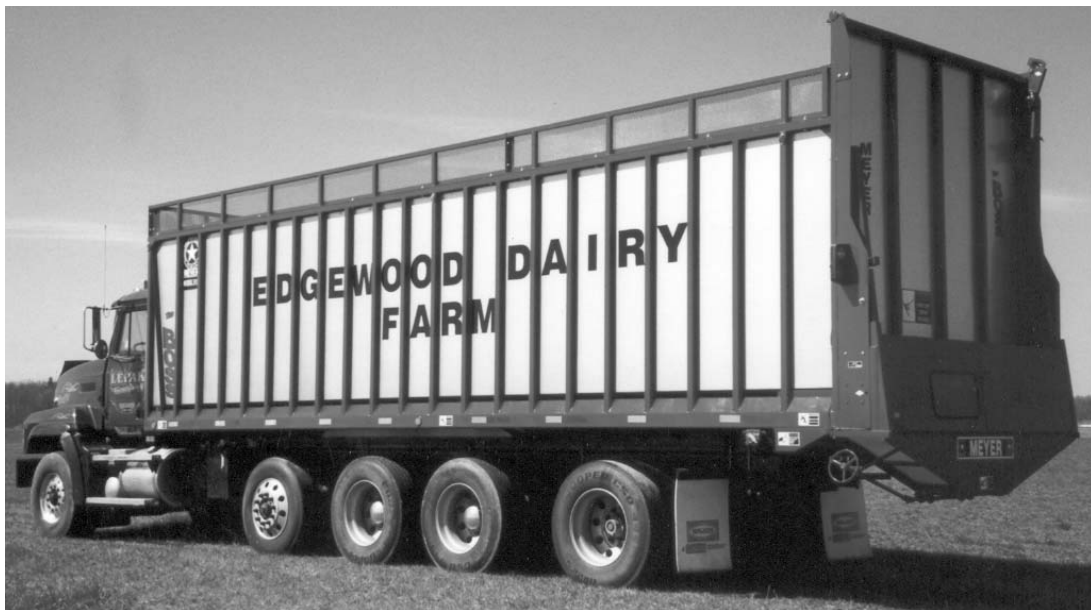
OPERATORS AND PARTS MANUAL NO. 04-01-9100
FOR
9100 SERIES

MEYER

“BOSS”

REAR UNLOAD FORAGE BOX
TRUCK AND TRAILER

MODELS:	9122	9124
	9126	9128
	9130	9130T
	9136T	9140T



DO NOT OPERATE EQUIPMENT UNTIL THIS MANUAL HAS BEEN READ AND UNDERSTOOD.

MEMBER



Over
65 years
of service
to our customers

MANUFACTURED BY

Meyer Mfg. Corp.

County Hwy. A West

P.O. Box 405

Dorchester, Wisconsin 54425-0405

Phone 715-654-5132 • FAX 715-654-5513

1-800-325-9103

www.meyermfg.com

E-mail: sales@meyermfg.com



INTRODUCTION

Congratulations on your purchase of a new Meyer Rear Unload Forage Box. Undoubtedly you have given much consideration to your purchase and we're proud that you have selected Meyer. Pride in craftsmanship, engineering and customer service have made Meyer products the finest in the farm equipment industry today.

There is no substitute for quality. That is why thousands of people like you have purchased Meyer farm equipment. They felt it was the best equipment to serve their farming needs, now and in years to come. We ask that you follow our policy of "safety first," and we strongly suggest that you read through the owner's manual before operating your Meyer farm equipment.

Meyer Manufacturing Corporation wants to thank you for not compromising quality. We are determined to offer excellence in customer service as well as provide you with the very best value for your dollar.

Sincerely,

All Employees of
MEYER MANUFACTURING CORPORATION

The Model 9100 is available as a truck/trailer mounted unit or mounted to a wagon running gear pulled and powered by a farm tractor. When the PTO is referred to, it means power takeoff from the truck.

The Model 9100 may be referred to as rear unload box, forage box, box or rear unload forage box in this manual.



This SAFETY ALERT SYMBOL means ATTENTION! BE CAREFUL! YOUR SAFETY IS INVOLVED! It stresses an attitude of HEADS UP FOR SAFETY. When you see this symbol, be alert to the possibility of PERSONAL INJURY and carefully read the message that follows.



WARNING: NEVER OPERATE WITHOUT ALL COVERS, SHIELDS AND GUARDS IN PLACE. KEEP HANDS, FEET AND CLOTHING AWAY FROM MOVING PARTS. SOME COVERS AND GUARDS HAVE BEEN REMOVED FOR ILLUSTRATIVE PURPOSES ONLY IN THIS MANUAL. FAILURE TO HEED MAY RESULT IN SERIOUS PERSONAL INJURY OR DEATH.

Meyer Manufacturing Corporation reserves the right to make improvements in design, or changes in specifications at any time, without incurring any obligation to owners of units previously sold.

This supersedes all previous published instructions.

IMPORTANT:

At the front of this manual is a Product Registration and Inspection Certificate. Be sure your dealer has completed this certificate and promptly forwarded a copy to Meyer Manufacturing to validate the manufacturer's warranty. The product model and serial number are recorded on this certificate and below for proper identification of your Meyer Forage Box by your dealer and the manufacturer when ordering repair parts. The serial number is stamped in the front upright of the left-hand side.

Model No. _____

Serial No. _____

Date of Purchase _____

At the back of this manual is the repair parts section. All replacement parts are to be obtained from or ordered through your Meyer dealership. When ordering repair parts, refer to the parts section and give complete information including quantity, correct part number, detailed description and even Model No. and Serial No. of the forage box which needs repair parts.

HOW TO READ YOUR SERIAL NUMBER

Your serial number is stamped on the front left hand vertical tube.

Example: 1291253

Model Year / Model / Sequence of Build

↓ ↓ ↓
12 91 253

NOTE: All references to right hand (RH), left hand (LH), front and rear apply to the product as viewed from the rear of the box.

You are urged to study this manual and follow the instructions carefully. Your efforts will be repaid in better operation and service as well as a savings in time and repair expense. Failure to read this manual and understand the machine could lead to serious injury. If you do not understand instructions in this manual, contact either your dealer or Meyer Manufacturing Corp. at Dorchester, WI 54425.

TABLE OF CONTENTS

INTRODUCTION	2
How to Read Your Serial Number	2
TABLE OF CONTENTS	3
MANUFACTURER'S WARRANTY	4
SAFETY PRECAUTIONS	5
Safety First	6
PRE-OPERATION	9
General	9
Light Hookup	10
Hydraulic Hookup	10
Air Brake Hookup	10
Start Up And Stopping	10
TRANSPORTING	11
Tractor Towing Size Requirements	11
Material Estimated Weight Per Cubic Foot	11
9100 Trailer Rear Bumper	11
Rear Unload Operation	12
LUBRICATION	15
Daily Lubrication	15
End Of Crop Cleanup And Maintenance	15
ADJUSTMENTS	16
REPAIR PARTS	17
Gearbox & Chain Drive	17
Hydraulic Plumb To The Front	19
Apron	21
9100 Main Body	25
Front Air Hook-Up & Front Fold Down Extension	31
Rear Door	33
Optional Double Door	35
Highway Transport Lights	37
Trailer Lighting	39
Trailer Suspension	41
Wheel End Parts	43
Roller Chain Oiler	45
9100 Optional Grain Kit	47
9100-GDS-RL-PKG	49
Gate Delay/Return Line	49
8100-GDS-SM & 8100-GDS-SME	51
GATE DELAY PACKAGE W/SIDE MOUNT CONTROL	51
8100-GDS-SM & 8100-GDS-SME	52
GATE DELAY PACKAGE W/SIDE MOUNT CONTROL	52
GATE DELAY PACKAGE 8100-GDS	53
"MAINTENANCE RECORD"	54
9100 TRAILER TIRE WHEEL TORQUE	55
TIRE INFLATION	55
WHEEL TORQUE TABLE	55
"SPECIFICATIONS"	56

NEW MEYER REAR UNLOAD FORAGE BOX MANUFACTURER'S WARRANTY

01/01/00

- I. The "Product Registration & Inspection Certificate" along with the original billing invoice "Owners Registration Form" must be completed in full and promptly returned to Meyer Mfg. Corp. for this warranty to become both valid and effective. All warranties on New Meyer Forage Boxes shall apply only to the original retail customer from an authorized Meyer Mfg. Corp. dealership.
- II. This warranty shall not apply to any Meyer Forage Box which has been subjected to misuse, negligence, alteration, accident, incorrect operating procedures, or which shall have been repaired with parts other than those obtained through Meyer Mfg. Corp.
- III. Meyer Mfg. Corp. warrants New Meyer Forage Boxes to be free from defects in material and workmanship under recommended use and maintenance service, as stated in the Operator's and Parts Manual," as follows:
 - A. Meyer Mfg. Corp. will repair or replace F.O.B. Dorchester, WI, as Meyer Mfg. Corp. elects, any part of a new Meyer Forage Box which is defective in material or workmanship:
 1. Without charge for either parts or labor during the first (1) year from purchase date to the original retail customer.
 2. Without charge for parts only during the second (2) year from purchase date to the original retail customer.
 - B. In addition to the above basic warranty, Meyer Mfg. Corp. will repair or replace F.O. B. Dorchester, WI as Meyer Mfg. Corp. elects:
 1. Any part of the following which is defective in material or workmanship (not neglect to recommended use and service) without charge for parts only (not labor) during the stated time periods from date of purchase to the original retail customer:

Two (2) Years: The D667XH/667K pintle main apron chain assembly.
 2. Any part of the following which is defective in material or workmanship (not neglect to recommended use and service) with a "pro-rated" charge for parts only (not labor) during the stated time period from date of purchase to the original retail customer:

Ten (10) Years: a. The all welded steel frame box structure.
- IV. COMMERCIAL USE: Coverage as in paragraph III A1 ONLY, except warranty coverage is for (90) days for parts and labor to the original commercial retail customer.
- V. Repairs eligible for labor warranty must be made by Meyer Mfg. Corp. or an authorized Meyer dealership. The original retail customer is responsible for the transportation of the forage box to the dealership for warranty service or for any service call expenses.
- VI. Except as stated above, Meyer Mfg. Corp. shall not be liable for injuries or damages of any kind or nature, direct, consequential, or contingent, to persons or property. This warranty does not extend to loss of crop or for any other reasons.
- VII. No person is authorized to give any other warranties or to assume any other obligation on Meyer Mfg. Corp.'s behalf unless made or assumed in writing by Meyer Mfg. Corp. This warranty is the sole and exclusive warranty which is applicable in connection with the manufacture and sale of this product and Meyer Mfg. Corp.'s responsibility is limited accordingly.

Optional Equipment-Tarp, scales etc. warranty-See original equipment warranty.

SAFETY PRECAUTIONS



THIS SYMBOL IS USED TO CALL ATTENTION TO INSTRUCTIONS CONCERNING PERSONAL SAFETY. BE SURE TO OBSERVE AND FOLLOW THESE INSTRUCTIONS. TAKE TIME TO BE CAREFUL!



WARNING: BEFORE ATTEMPTING TO OPERATE THIS FORAGE BOX, READ AND STUDY THE FOLLOWING SAFETY INFORMATION. IN ADDITION, MAKE SURE THAT EVERY INDIVIDUAL WHO OPERATES OR WORKS WITH THE FORAGE BOX, WHETHER FAMILY MEMBER OR EMPLOYEE, IS FAMILIAR WITH THESE SAFETY PRECAUTIONS.

Require anyone who will operate this forage box to read and completely understand this owner's manual. Give necessary instructions.

DO NOT operate, service, inspect or otherwise handle this forage box until all operators have read this Owner's Manual and have been properly trained in its intended usage.

DO NOT allow minors (children) or inexperienced persons to operate this forage box.

DO NOT clean, adjust or lubricate while the forage box is in motion.

Inspect when first delivered and regularly thereafter; that all connections and bolts are tight and secure before operating.

Know how to stop operation of the forage box before starting it!

DO NOT operate until all shields and guards are in place and securely fastened.

Make certain everyone is clear of the forage box before applying power.

Keep hands, feet and clothing away from moving parts. Loose or floppy clothing should not be worn by the operator.

Observe all applicable traffic laws when transporting on public roadways (where legal to do so). Check local laws for all highway lighting and marking requirements.

Tractor Models: Always install a SMV emblem on forage box for transporting on roadways and keep this emblem clean and bright.

DO NOT step up on any part of the forage box at any time.

Keep the forage box away from power lines. Contact with electric lines may result in serious injury or death by electrocution!

If the forage box becomes clogged, shut off the power, set park brake, remove keys, keep keys in your possession, and allow all mechanism to stop. Then, clean or work on the forage box as required.

Always shut off the power, remove keys, keep keys in your possession to prevent accidental startup or unexpected movement before working on forage box.

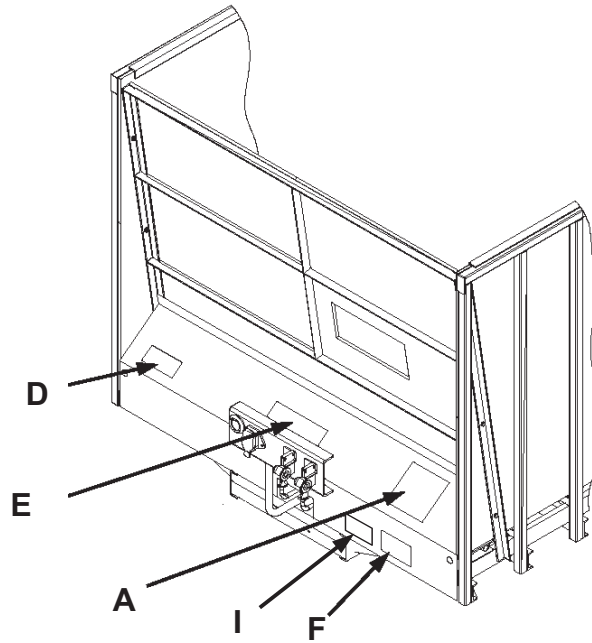
Tractor Models: DO NOT tow at speeds in excess of 20 MPH when transporting this forage box. Never exceed a safe travel speed.

MEYER MFG. CORP. PROVIDES GUARDS FOR EXPOSED MOVING PARTS FOR THE OPERATOR'S PROTECTION; HOWEVER, SOME AREAS CANNOT BE GUARDED OR SHIELDED IN ORDER TO ASSURE PROPER OPERATION. THE OPERATOR'S MANUAL AND DECALS ON THE FORAGE BOX ITSELF WARN YOU OF DANGERS AND MUST BE READ AND OBSERVED CLOSELY!

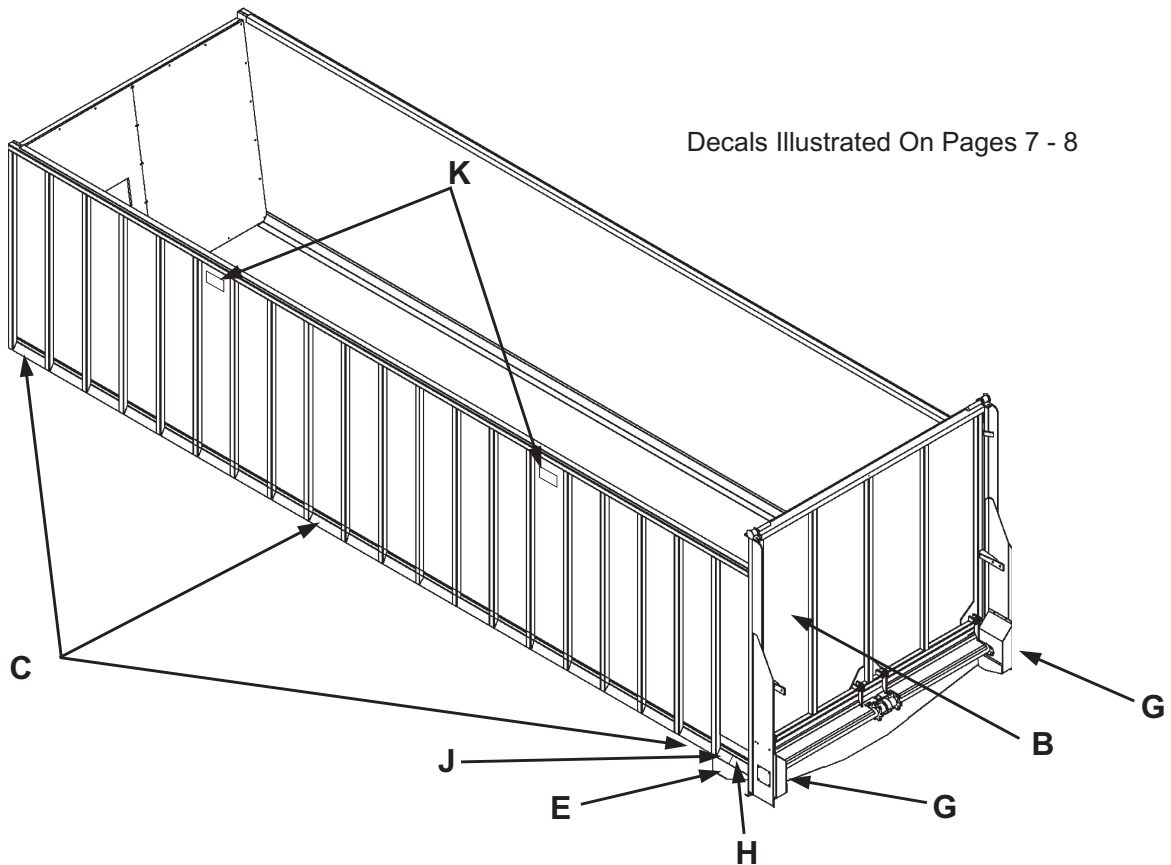
Study the Above Safety Rules


FAILURE TO HEED MAY RESULT IN SERIOUS PERSONAL INJURY OR DEATH.

 **SAFETY FIRST**



Decals Illustrated On Pages 7 - 8



 **CAUTION:** READ ALL DECALS ON THE FORAGE BOX AND IN THIS MANUAL. KEEP THESE DECALS CLEAN AND REPLACE ANY LOST OR DESTROYED DECALS. BECOME FAMILIAR WITH ALL TRUCK OR TRACTOR AND FORAGE BOX CONTROLS.



SAFETY FIRST



The Meyer Forage Box is manufactured with operator safety in mind. Located on the forage box are various decals to aid in operation and warn of danger or caution areas. Pay close attention to all decals on the forage box.

DO NOT REMOVE ANY DECALS. IF DECALS ARE LOST, DAMAGED OR IF FORAGE BOX IS REPAINTED, REPLACE DECALS. REMEMBER: DECALS ARE FOR YOUR PROTECTION AND INFORMATION.

A brief definition of signal words that are used in this manual is as follows:

- DANGER** Indicates an imminently hazardous situation that, if not avoided, will result in death or serious injury.
- WARNING** Indicates a potentially hazardous situation that, if not avoided could result in death or serious injury, and includes hazards that are exposed when guards are removed.
- CAUTION** Indicates a potentially hazardous situation that, if not avoided may result in minor or moderate injury.

CAUTION

SAFETY FIRST

(Do Not Operate This Machine Without Reading These Instructions)

Meyer Mfg. Corp. always takes the operator's safety into consideration when designing farm machinery by covering exposed moving parts for his protection; however, some areas cannot be guarded or shielded in order to assure proper operation.

This safety alert symbol means ATTENTION! BE CAREFUL! YOUR SAFETY IS INVOLVED! It stresses an attitude of HEADS UP FOR SAFETY. Also read all other decals as they are also safety warnings.

Remember: The careful operator is the best operator. Most accidents are caused by human error. Certain precautions must be observed to prevent the possibility of injury or damage.

Read the **HEADS UP** Rules before you operate our equipment.

DO NOT allow persons other than the authorized adult operator near the machine.

DO NOT clean, adjust, or lubricate the machine when any part is in operation.

DO NOT pass in front of discharge area of machine when implement is in operation.

Tractor PTO **MUST** match implement PTO. (NEVER USE PTO ADAPTERS.)

IF THE MACHINE BECOMES CLOGGED, DISENGAGE POWER TAKE-OFF, REMOVE KEYS FROM TRACTOR, AND ALLOW ALL MECHANISMS TO STOP BEFORE CLEANING.

KEEP HANDS, FEET, CLOTHING, AND HAIR AWAY FROM ALL MOVING PARTS WHEN MACHINE IS IN OPERATION. LOOSE OR FLOPPY CLOTHING SHOULD NOT BE WORN BY THE OPERATOR.

STOP ENGINE, WAIT FOR ALL MOVEMENT TO STOP BEFORE LEAVING OPERATOR'S POSITION TO ADJUST, LUBRICATE, CLEAN, OR UNLOAD MACHINES. UNLESS OTHERWISE SPECIFICALLY RECOMMENDED IN THE OPERATOR'S MANUAL.

NEVER START THE MACHINE UNTIL ALL GUARDS AND SAFETY SHIELDS ARE SECURED IN PLACE.

KEEP OFF EQUIPMENT UNLESS SEAT OR PLATFORM FOR OPERATION AND OBSERVATION IS PROVIDED. KEEP ALL OTHERS OFF.

PTO SHIELD MUST ROTATE FREELY AND BE IN PLACE.

ALWAYS RUN PTO STRAIGHT IN LINE TO AVOID AN ACCIDENT BY BREAKAGE.

YOU MUST OBSERVE ALL APPLICABLE TRAFFIC LAWS WHEN TRANSPORTING ON PUBLIC ROADWAYS (WHERE LEGAL TO DO SO). CHECK LOCAL LAWS FOR ALL HIGHWAY LIGHTING AND MARKING REQUIREMENTS AND COMPLY WITH THESE LAWS.

MAKE CERTAIN EVERYONE IS CLEAR OF MACHINE BEFORE STARTING ENGINE OR OPERATION.

PLEASE KEEP ALL DECALS AND SLOW MOVING VEHICLE SIGN CLEAN SO THEY ARE LEGIBLE.

If any decal becomes damaged or lost, call your dealer or our plant for replacement.
Always use **GENUINE MEYER** replacement parts.

46-0001-22

DECAL A.
PART NO. 46-0001-22



DECAL B.
PART NO. 46-0011-D



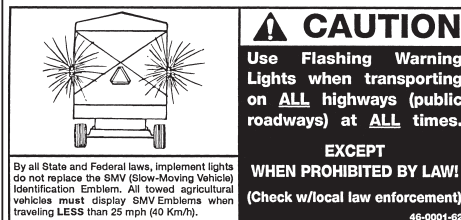
DECAL C.
PART NO. 46-0001-20



DECAL D.
PART NO. 46-0001-35



DECAL E.
PART NO. 46-0001-4



DECAL F.
PART NO. 46-0001-62
(PULL TYPE MODELS)



DECAL G.
PART NO.
46-0001-33

CAUTION: READ ALL DECALS ON THE FORAGE BOX AND IN THIS MANUAL. KEEP THESE DECALS CLEAN AND REPLACE ANY LOST OR DESTROYED DECALS. BECOME FAMILIAR WITH ALL TRUCK OR TRACTOR AND FORAGE BOX CONTROLS.



DECAL H.
PART NO. 46-9100-3



DECAL I.
PART NO. 46-8500-7



DECAL J.
PART NO. 46-0001-26



DECAL K.
PART NO. 46-9100-4

PRE-OPERATION

GENERAL

Whenever adjusting, cleaning, lubricating or otherwise servicing this forage box, you must shutoff and lockout power to the box. Because this box can be truck mounted or powered by a tractor, methods vary. On truck mounted units, the connection between the PTO and box is permanently installed and not intended to be disconnected. On trucks, disengage the PTO drive, turn off the engine, set the parking brake, remove the ignition keys and keep them in your possession to prevent anyone else from accidentally applying power to the box unexpectedly. For tractors, disengage the hydraulics, turn off the engine, set the brakes.

Throughout this manual, when directed to shutoff and lockout power, be familiar with the previously described procedures for the type of machine you are operating.

Be sure your forage box is properly mounted to the truck frame or to the wagon running gear. Consult your dealer if you have any questions about proper installation. A tie down kit from the manufacturer and illustrated in the parts listing of this manual is available for wagon applications.

Hydraulic input to the 9100 forage box requires 35GPM @ 3000 PSI. If truck mounted, install a relief valve set at

3000 PSI. Engine RPM should be 1500 RPM. Set up hydraulic system on truck mounted units with a 40 gallon reservoir minimum. Call factory for further information.



WARNING: INSPECT REGULARLY THAT ALL CONNECTIONS AND BOLTS ARE TIGHT AND SECURE BEFORE OPERATING. FAILURE TO HEED MAY RESULT IN SERIOUS PERSONAL INJURY OR DEATH.

Inspect the forage box for proper adjustments as this will ensure maximum machine performance. See "Adjustments" section. Grease and oil the forage box as required. See "Lubrication" section.



WARNING: DO NOT OPERATE UNTIL ALL SHIELDS AND GUARDS ARE IN PLACE AND SECURELY FASTENED. FAILURE TO HEED MAY RESULT IN SERIOUS PERSONAL INJURY OR DEATH.

LIGHT HOOKUP

A 7 pin electrical socket is provided to plug the electrical control plug from your truck or tractor. See figure 1.

This will operate signal, tail, clearance and brake lights.

Depending on make and model of truck, it may be necessary to install a light converter. (Meyer part #56-0028). Converter allows signal lights and brake lights to operate according to DOT lighting.

HYDRAULIC HOOKUP

Connect hydraulic pressure lines from the hydraulic power supply (Wet kit) to the pressure and return lines as illustrated on figure 1. The pressure relief on the wet kit pump must be adjusted to have 3500 PSI to the system under load. A gauge has been provided (Serial #0891231 & later) to provide an easy reference for pressure. Do not exceed 3500 PSI as motor failure could result.

AIR BRAKE HOOKUP

Connect the control line (blue) from your truck air supply to the blue gladhand on the trailer. Connect the tank supply line (red) to the red gladhand on the trailer. See figure 1.



WARNING: IF THE ABS INDICATOR LAMP COMES ON AND STAYS ON WHEN YOU APPLY BRAKES TO A MOVING TRAILER, THE TRAILER ABS IS NOT WORKING PROPERLY. THE ABS MUST BE SERVICED AS SOON AS POSSIBLE UPON COMPLETION OF YOUR TRIP TO ENSURE FULL ANTI-LOCK BRAKING CAPABILITY

START UP AND STOPPING

Operation of the forage box with truck begins when the PTO is engaged to run the hydraulic pump.

Operation for tractor pulled forage boxes begins when the tractor hydraulic system is engaged.

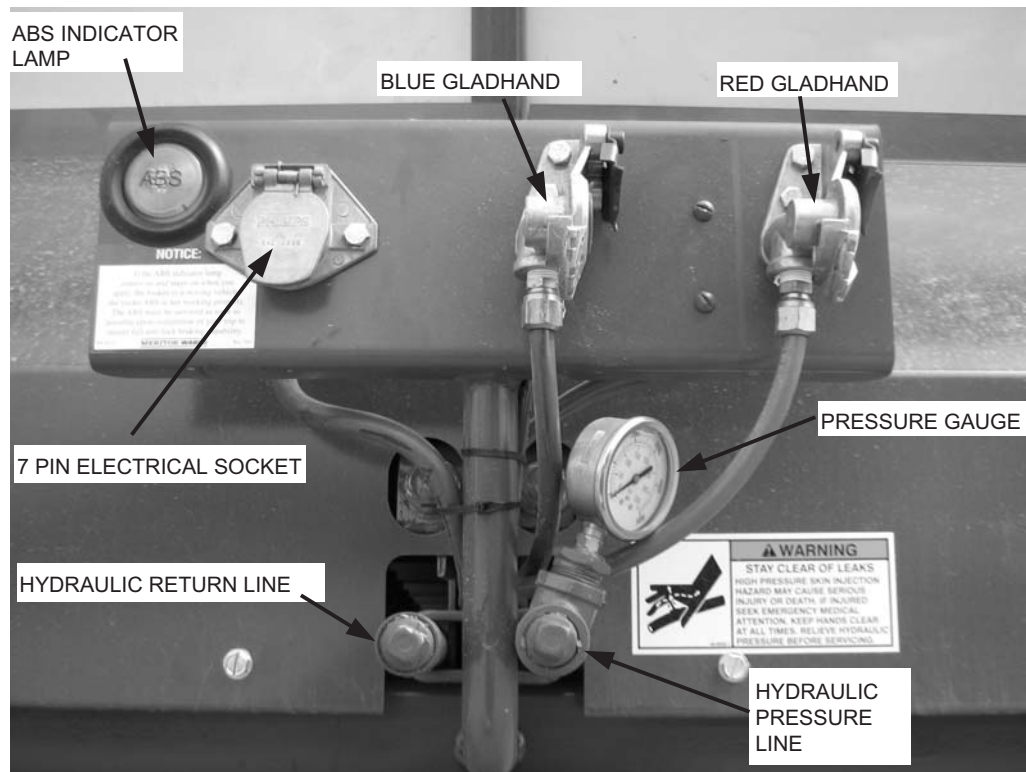


FIGURE 1. ELECTRICAL LIGHT AND AIR BRAKE HOOKUP

TRANSPORTING



WARNING: (TRACTOR POWERED) INSTALL A SMV EMBLEM ON REAR OF FORAGE BOX FOR TRANSPORTING ON ROADWAYS. KEEP THIS EMBLEM CLEAN AND BRIGHT. FAILURE TO HEED MAY RESULT IN SERIOUS PERSONAL INJURY OR DEATH.

Be sure and observe that the rear discharge door is latched closed before traveling on roadways.

If you will travel on public roads you must know all rules governing such operation. This will include lighting and brake requirements in addition to traffic rules. You may also be required to install a safety chain device on the trailer.

TRACTOR TOWING SIZE REQUIREMENTS

Use the following chart for calculating the minimum tractor weight.

MODEL	FORAGE BOX EMPTY WEIGHT + LOAD = GW	MINIMUM TRACTOR WEIGHT UP TO 20 MPH
9122	6,300 + _____ = _____	2/3 of box gross weight
9124	6,600 + _____ = _____	2/3 of box gross weight

MATERIAL ESTIMATED WEIGHT PER CUBIC FOOT

MATERIAL	LBS / CU. FT.
SOYBEANS	47 LBS.
COTTON SEED DRY	20 LBS.
CORN (SHELLED)	45 LBS.
CORN SILAGE	30 LBS.
HAYLAGE	20 LBS.
SAWDUST	17 LBS.

SOURCE: ASAE

NOTE: HEAPED LOADS HAVE SIGNIFICANTLY HIGHER CAPACITIES



WARNING: MAKE CERTAIN EVERYONE IS CLEAR OF EQUIPMENT BEFORE APPLYING POWER. FAILURE TO HEED MAY RESULT IN SERIOUS PERSONAL INJURY OR DEATH.



WARNING: (TRACTOR POWERED) DO NOT TOW AT SPEEDS IN EXCESS OF 20 MPH. FAILURE TO HEED MAY RESULT IN SERIOUS PERSONAL INJURY OR DEATH.

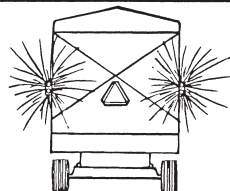


WARNING: YOU MUST OBSERVE ALL APPLICABLE TRAFFIC LAWS WHEN TRANSPORTING ON PUBLIC ROADWAYS. CHECK LOCAL LAWS FOR ALL HIGHWAY LIGHTING AND MARKING REQUIREMENTS. FAILURE TO HEED MAY RESULT IN SERIOUS PERSONAL INJURY OR DEATH.

Operating speed is dictated by the terrain over which you are traveling. Always use caution. Avoid traveling on slopes or hills that are unsafe.



CAUTION: FOR TRACTOR TOWED USE FLASHING WARNING LIGHTS WHEN TRANSPORTING ON ALL PUBLIC ROADWAYS, EXCEPT WHEN PROHIBITED BY LAW. CHECK FOR TRAFFIC CONSTANTLY. BE SURE YOU CAN SEE THAT NO ONE IS ATTEMPTING TO PASS YOU AND THAT ALL TRAFFIC IS SUFFICIENTLY CLEAR FROM YOU BEFORE MAKING ANY TURNS.



CAUTION

Use Flashing Warning Lights when transporting on ALL highways (public roadways) at ALL times.

EXCEPT WHEN PROHIBITED BY LAW!

(Check w/local law enforcement)

46-0001-62

By all State and Federal laws, implement lights do not replace the SMV (Slow-Moving Vehicle) Identification Emblem. All towed agricultural vehicles must display SMV Emblems when traveling LESS than 25 mph (40 Km/h).

9100 TRAILER REAR BUMPER

(Serial #0991201 & later)

For highway transport of 9100 trailers it is necessary to adjust the rear bumper to the most rearward position to comply with the REAR IMPACT PROTECTION (FMCSR 393.86). For unloading into baggers the rear bumper is designed to be slid forward and not interfere with the unloading operation. (See decal 46-9100-3, on page 8).

REAR UNLOAD OPERATION

Whenever adjusting, cleaning, lubricating or otherwise servicing this forage box, you must shutoff and lockout power to the box. Because this box can be truck mounted or powered by a tractor, methods vary. On truck mounted units, the connection between the PTO and box is permanently installed and not intended to be disconnected. On trucks, disengage the PTO drive, turn off the engine, set the parking brake, remove the ignition keys and keep them in your possession to prevent anyone else from accidentally applying power to the box unexpectedly. For tractors, disengage the hydraulics, turn off the engine and set the brakes.

Throughout this manual, when directed to shutoff and lockout power, be familiar with the previously described procedures for the type of machine you are operating.



WARNING: MAKE CERTAIN EVERYONE IS WELL CLEAR OF EQUIPMENT BEFORE APPLYING POWER. FAILURE TO HEED MAY RESULT IN SERIOUS PERSONAL INJURY OR DEATH.

Tractor Pulled:

Always park the forage box and unloading tractor in a straight line. Shift the unloading tractor to "Neutral" or "Park". Set the brakes and turn power off.

Make sure all persons are well clear of the forage box and the unloading area.

The rear discharge door opens automatically by releasing its latches as the main aprons begin to move. The rear discharge door can spring open with extreme force when its latches release. See figure 1. Pressure of forage against the rear door causes it to spring open very quickly.



WARNING: THE REAR DISCHARGE DOOR CAN SPRING OPEN QUICKLY AND WITH EXTREME FORCE. KEEP ALL PERSONS WELL CLEAR OF THE FORAGE BOX AND UNLOADING AREA. FAILURE TO HEED MAY RESULT IN SERIOUS PERSONAL INJURY OR DEATH.

From the operator's seat, restart, and **SLOWLY** engage the apron chains to open the rear door. Once the door opens, regulate the discharge flow with the engine speed. Do not operate above rated engine speed.

Double Door Option:

During unloading, load pressure and chain movement will force the doors to open. Oil will be forced out of the cylinder and into the hydraulic return line. After the box is unloaded, reverse the control lever in the tractor and the return line will become pressurized and force oil back into the cylinder to close the doors. A check valve in the system will keep the box from running backwards. This check valve should be set at 1/4 turn open. **NOTE:** Never force the doors open when the line is pressurized. To open the doors with the box empty, **Shut the Tractor OFF** and move the control lever into the unloading position and pull the doors open slowly. Another option would be to remove the return hose from the tractor, release pressure in the system, remove the hydraulic tip from the hose and let the oil drain into a container while opening the doors. Approximately 1-cup will come out from the cylinder travel.

Unloading is best observed from the operator's seat. Keep moving the forage box forward to prevent silage from being carried underneath into the main apron chain return area.

The front of the box has a plexiglass window for convenient observation.

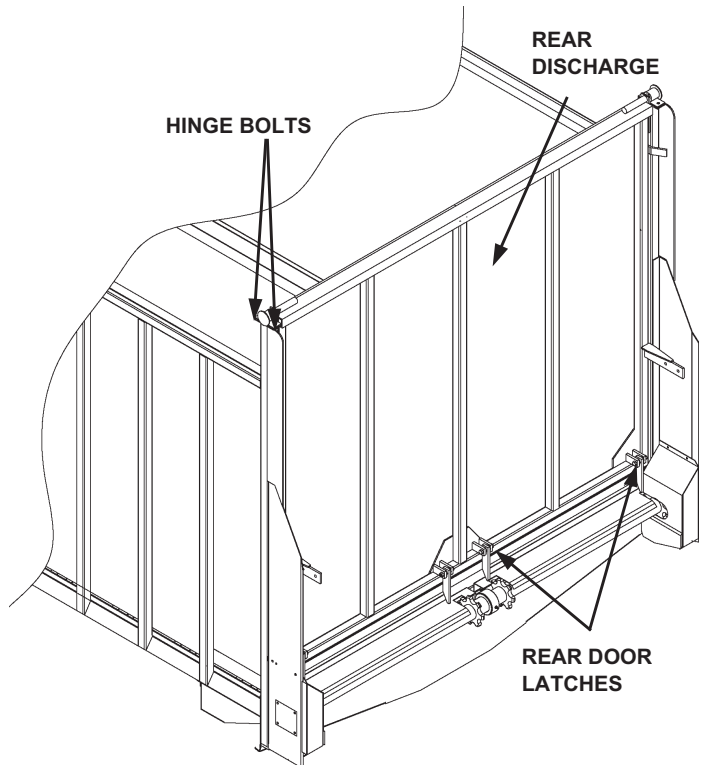


FIGURE 2. REAR OPENING DISCHARGE DOOR CAUTION - QUICK RELEASE



WARNING: DO NOT STEP UP ON ANY PART OF THE FORAGE BOX AT ANY TIME. FAILURE TO HEED MAY RESULT IN SERIOUS PERSONAL INJURY OR DEATH.

The unloading process described is to be performed by the operator alone. This will eliminate unexpected “start-ups” and minimize other hazards that could result by more than one person in control. If the forage box should become clogged, shut off all power to the forage box and wait for all motion to stop. Shut off and lockout power. Then clean out the machine.

When finished unloading reduce engine speed to idle and disengage the truck PTO drive or the tractor hydraulics. Pull the rear unload box straight ahead to pull the door away from the unloaded pile of forage. When free, gravity will allow the door to swing shut and the door latches will engage the apron chain links to secure it shut. Observe that this happens properly.



WARNING: SHUT OFF AND LOCK OUT POWER BEFORE CLEANING, ADJUSTING, LUBRICATING OR SERVICING THIS MACHINE. FAILURE TO HEED MAY RESULT IN SERIOUS PERSONAL INJURY OR DEATH.

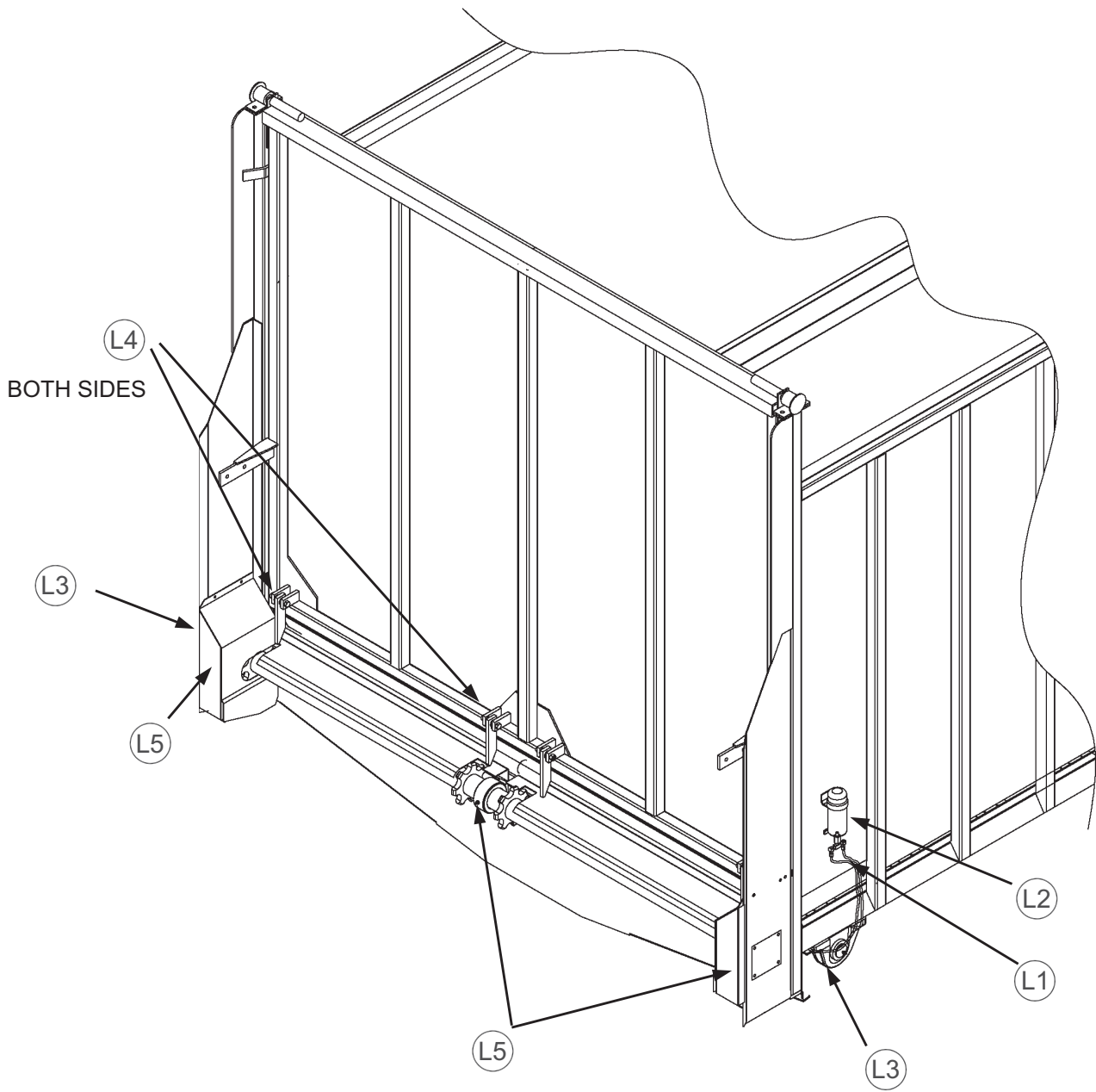
Allow box to completely clean out the last load of forage. It is recommended to lube the rear unload box before storage to exclude moisture from bearings. Apply oil to roller chain drives with gravity oil luber and to the apron chains with a brush. This is also a good time to inspect all adjustments and check for parts that need repair or replacement. Performing these tasks now will guarantee that the box is ready for use at the beginning of the next season.

Never use “live” power to aid in the clean-out of a clogged machine. If any mechanism fails, move the forage box to a safe work area and then repair the mechanism before proceeding with unloading of the forage. If repairs require removal of forage from inside the forage box, remove the rear discharge door (bolted hinges on top of each side) and empty the forage manually by hand through the rear opening.



DANGER: NEVER ENTER THE FORAGE BOX FOR ANY REASON WITHOUT FIRST SHUTTING OFF AND LOCKING OUT POWER. FAILURE TO HEED MAY RESULT IN SERIOUS PERSONAL INJURY OR DEATH.

Never enter the forage box for any reason if there is any possibility of power being applied to the unit.



LUBRICATION DIAGRAM

LUBRICATION



WARNING: SHUT OFF AND LOCK OUT POWER BEFORE CLEANING, ADJUSTING, LUBRICATING OR SERVICING THIS MACHINE. FAILURE TO HEED MAY RESULT IN SERIOUS PERSONAL INJURY OR DEATH.

DAILY LUBRICATION

(every 8-10 loads)

(L1) Oil (3) roller chains on apron drive. This is done by opening the ball valve on the gravity oiler while unloading, once per day.



WARNING: DO NOT STAND BEHIND UNIT WHILE PERFORMING THIS OPERATION.

(L2) Refill the gravity oiler at the beginning of each day.

(L3) Grease three jackshaft bearings on the rear driveshaft (each end, one @ center).

(L4) Oil (4) rear gate latch pivot bolts.

(L5) Grease (3) main apron shaft bearings.

END OF CROP CLEANUP AND MAINTENANCE

Allow box to completely clean out last load of forage. Clean out all forage material from inside the box and on the outside of the box.

It is recommended to lube the forage box before storage to exclude moisture from bearings. Apply oil to roller chain drives with the gravity oil luber and to the main apron chains with a brush.

It is also a good time to inspect all adjustments and check for parts that need repair or replacement. Performing these tasks now will guarantee that the forage box is ready for use at the beginning of the next season.

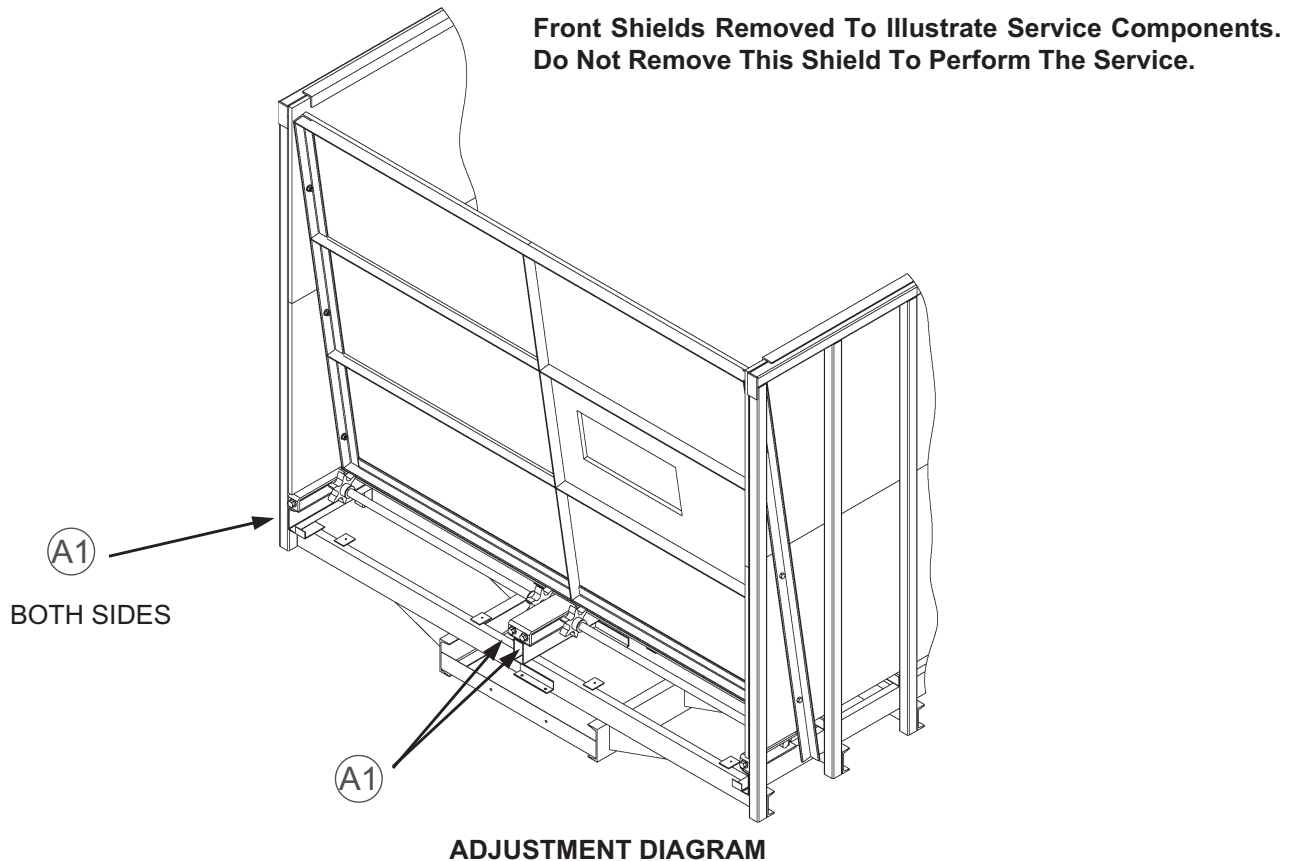
ADJUSTMENTS



WARNING: SHUT OFF AND LOCK OUT POWER BEFORE CLEANING, ADJUSTING, LUBRICATING OR SERVICING THIS MACHINE. FAILURE TO HEED MAY RESULT IN SERIOUS PERSONAL INJURY OR DEATH.

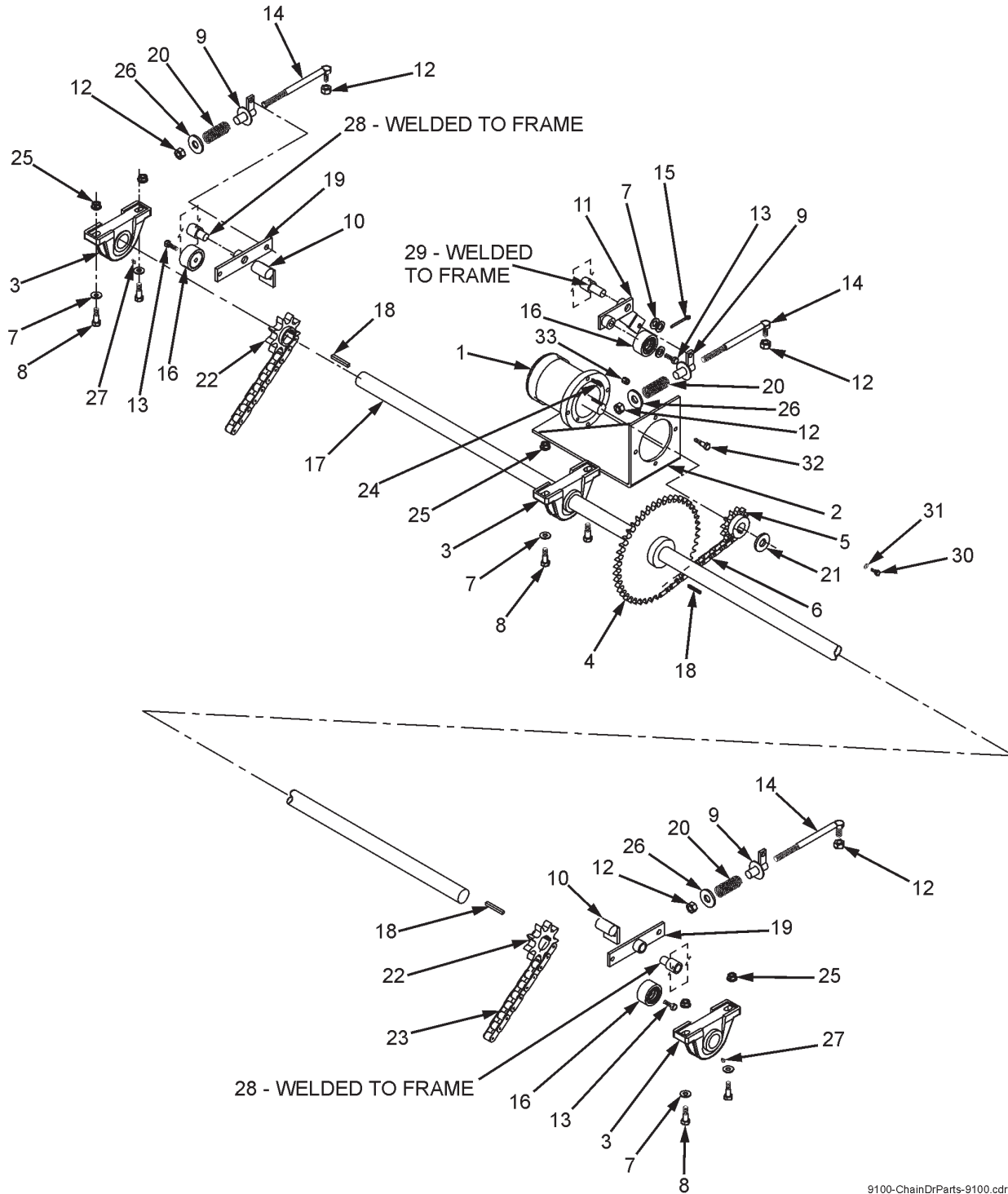
(A1) Correct tension on the apron chains is when the apron chain slat is 1/8" to 1/4" off the return slides (three feet from the front of the box). To tighten chains, tighten the adjuster bolts at each end of the front sprocket shafts. Each apron chain has its own sprocket shaft. Tighten the adjuster bolts at each end of the shaft equally. If adjuster bolt reaches maximum travel, remove equal links from each strand. Removeable links are provided in chain.

The roller chain drives are tensioned by automatic spring loaded tension blocks. Periodically tighteners will need to be adjusted to maintain proper spring tension. Springs should be compressed to obtain approximately 5" overall length.



REPAIR PARTS

GEARBOX & CHAIN DRIVE

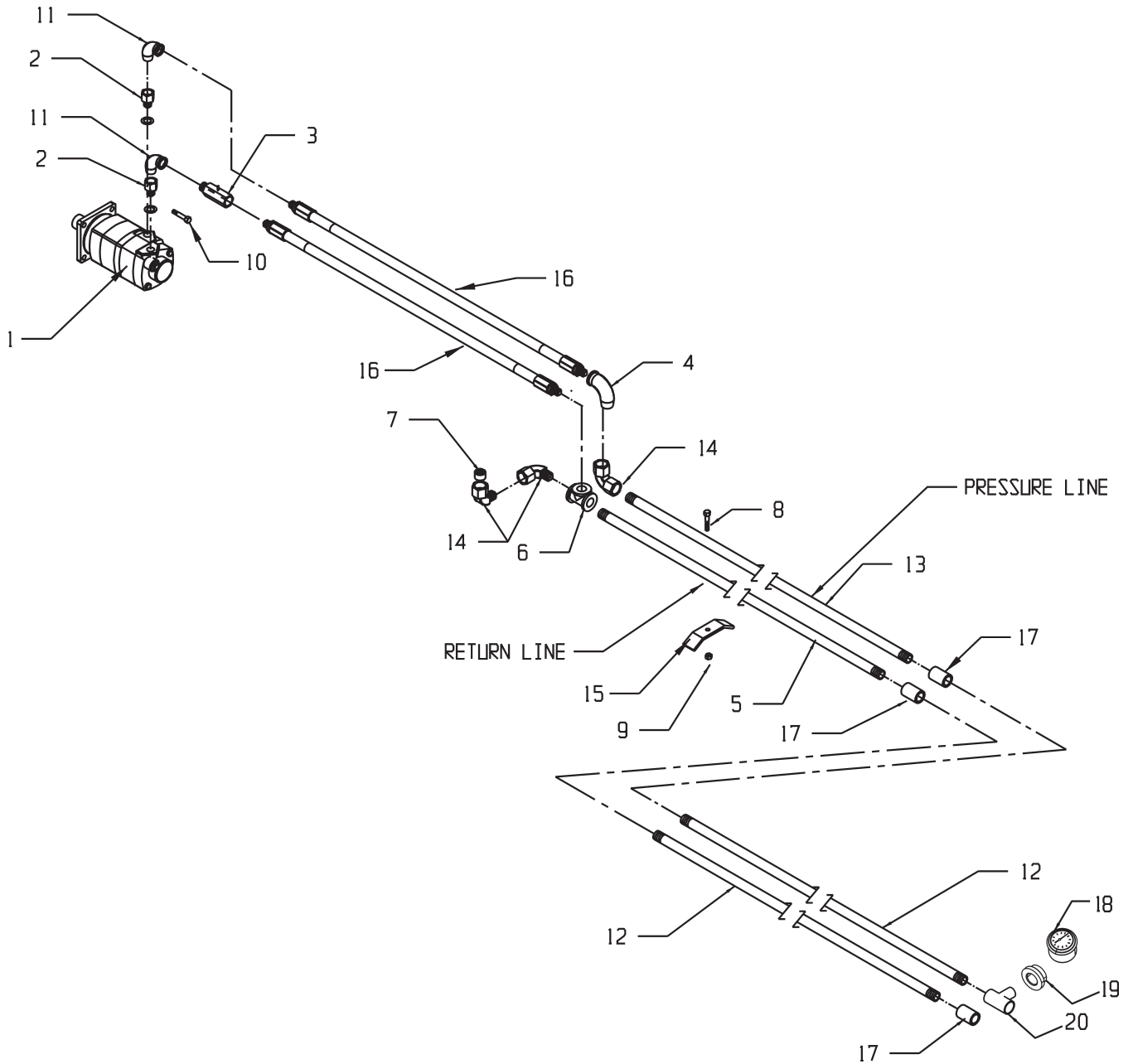


9100-ChainDrParts-9100.cdr

GEARBOX & CHAIN DRIVE

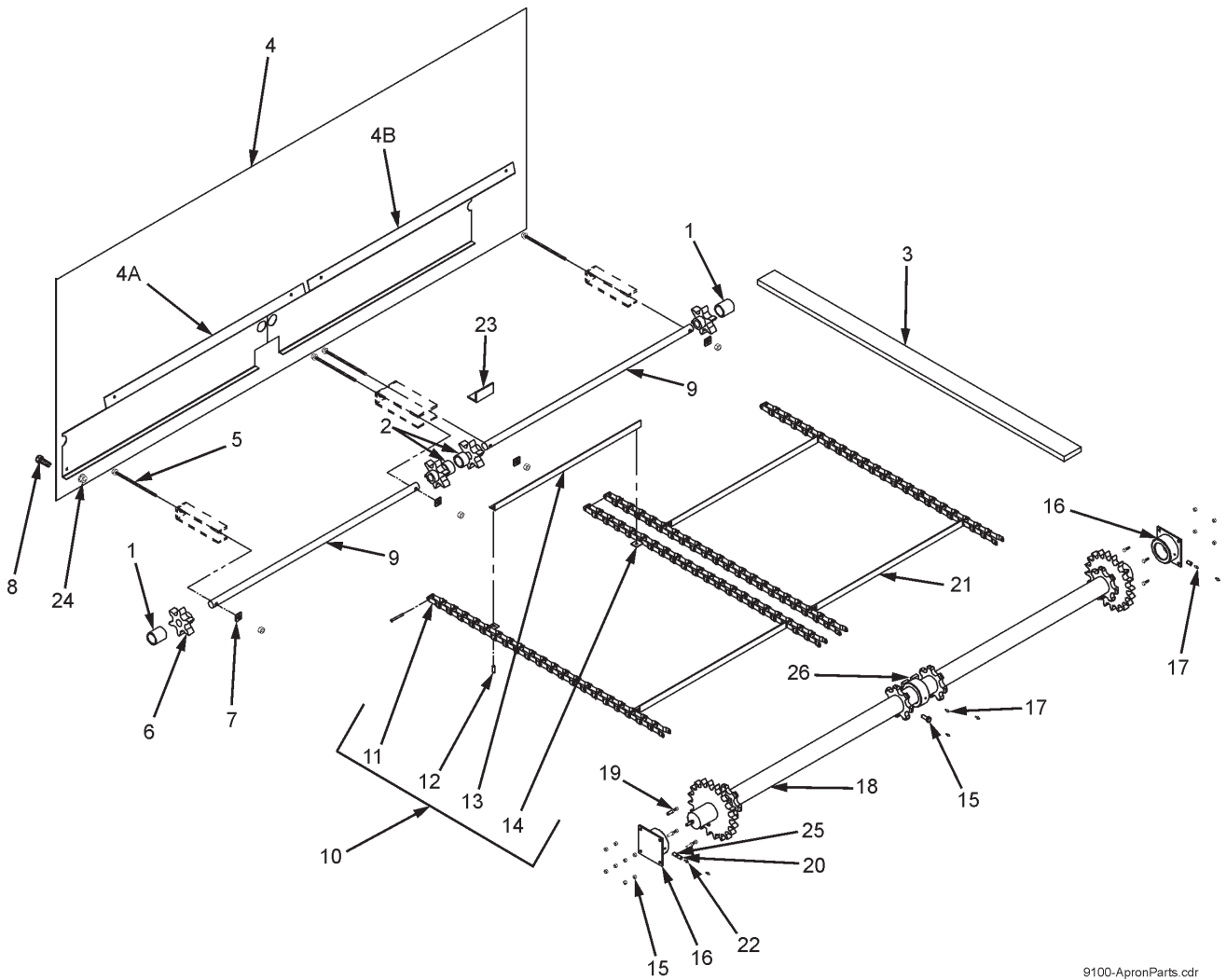
KEY	PART NO.	DESCRIPTION
1	55-0122	Hydraulic Motor
2	25-8202	Motor Bracket
3	14-0044	2" Pillow Block Bearing
4	10-0091	Sprocket, 120B30, 2" Bore, 1/2" Key
5	10-0090	Sprocket, 120B9, 1-1/2" Bore, 1/2" Key
6	11-0133	#120-50 Roller Chain
7	805-0063-Z	Washer, 5/8" Flat
8	851-6311-2.5Z	Bolt, 5/8-11 x 2-1/2 Hex Head Machine Bolt
9	25-8207	Chain Tightener Spring Sleeve Weldment
10	25-8209	Apron/Tightener Holder Assembly
11	25-8206-1	Center #120 Tightener Arm Less Roller
12	815-7510-Z	3/4-10 Nylon Insert Locknut
13	851-7510-3Z	3/4-10 x 3" M.B.
14	25-8204	Chain Tightener Adjuster Rod
15	38-0013	5/16 x 1-3/4" Roll Pin
16	912-0016	7/8" Nylon Roller Complete
16A	912-0016-1	Nylon Roller Only
16B	912-0016-2	Inner Sleeve
17	23-0102-1	Jackshaft, 2" x 96"
18	35-0024	Key, 1/2" x 1/2" x 2 1/2" (1045 Mat)
19	25-8205-1	Tightener Arm Assembly, Less Roller
20	29-0009	Compression Tightener Spring
21	75-0453	Spindle Washer Punchout
22	10-0085	Sprocket, 120B9, 2" Bore, 1/2" Key
23	11-0132	#120-46 Roller Chain
24	35-0009	3/8 x 3/8 x 2-1/4" Key (1045 Material)
25	810-6311-Z	5/8-11 Spin Locknut
26	805-0075-Z	Bolt Guide Sleeve Plate
27	30-0010	1/8" NPT Zerk
28	25-8208	Tightener Pivot Shaft
29	25-8210	Center Tightener Pivot Shaft
30	851-3816-1Z	Bolt, 3/8-16 x 1" Hex Head Machine Bolt
31	806-0038-Z	3/8" Internal Tooth Lockwasher
32	851-5013-2Z	Bolt, 1/2-13 x 2" Hex Head Machine Bolt
33	810-5013-Z	1/2-13 Spin Locknut

HYDRAULIC PLUMB TO THE FRONT



KEY	PART NO.	DESCRIPTION
1	55-0122	9100 Hydraulic Motor
2	55-0130	#59-16-12 Female Swivel Fitting
3	55-0007-B	3/4" Check Valve
4	55-0027	3/4 x 90 Degree Elbow
5	55-0138	3/4" Hydraulic Pipe x 233" (9122)
	55-0124	3/4" Hydraulic Pipe x 252" (9124/26/28/30/36)
6	55-0079	3/4" Black Steel Tee Fitting
7	55-0081	3/4" Steel Plug
8	851-3816-2Z	3/8-16 x 2" M.B. Zinc
9	815-3816-Z	3/8-16 Nylon Insert Locknut
10	851-5013-2Z	1/2-13 x 2" M.B. Zinc
11	55-0129	90 Degree Swivel Fitting
12	55-0136	3/4" Hydraulic Extension Pipes x 6" (9124)
	55-0135	3/4" Hydraulic Extension Pipes x 22" (9126)
	55-0134	3/4" Hydraulic Extension Pipes x 54" (9128)
	55-0133	3/4" Hydraulic Extension Pipes x 70" (9130)
	55-0125	3/4" Hydraulic Extension Pipes x 150" (9136)
	55-0143	3/4" Hydraulic Extension Pipe x 190" (9140)
13	55-0137	3/4" Hydraulic Pipe x 226" (9122)
	55-0126	3/4" Hydraulic Pipe x 249" (9124/26/28/30/36)
14	55-0082	3/4 x 90 Degree Street Elbow
15	100-8025-62	Hydraulic Pipe Clamp
16	55-0029	3/4" Hydraulic Hose x 36" Long
17	55-0030	3/4" Black Steel Coupler
18	55-0109	Pressure Gauge
	9100T-PGO	Pressure Gauge Option Kit
19	55-0174	3/4-1/4" Bushing
20	55-0079	3/4" Tee Fitting

APRON (1 of 2)



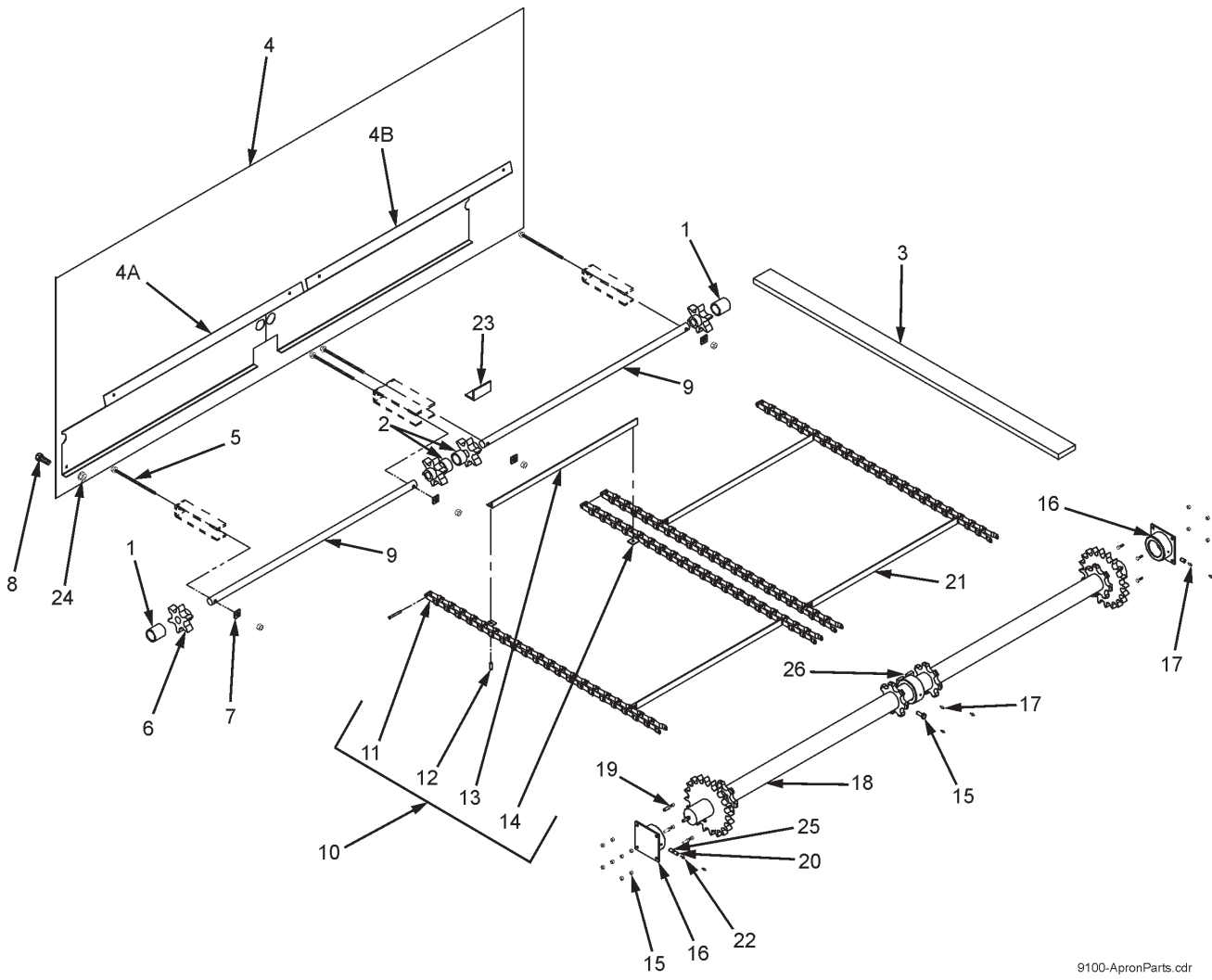
9100-ApronParts.cdr

APRON (1 OF 2)

KEY	PART NO.	DESCRIPTION
1	23-0103-2	Outer Sprocket Spacer 2-3/8" Long
2	23-0103-3	Inner Sprocket Spacer 1-3/8" Long
3	701-.75-1.75-16	Chain Return Slide Rail (As Required)
	701-.75-1.75-18	Chain Return Slide Rail (As Required)
	701-.75-1.75-20	Chain Return Slide Rail (As Required)
4	24-8206	9100 Front Apron Chain Shield Assembly
4A	24-8206-1-LH	9100 LH Front Apron Chain Shield Assembly
4B	24-8206-1-RH	9100 RH Front Apron Chain Shield Assembly
5	25-8201	Apron Chain Tightener Bolt
6	10-0092-1	Idler Sprocket w/Bushing
	13-0020	Bushing, 1-3/4" ID x 2" OD x 1-1/2" Long
7	25-8200	Tightener Block Weldment (9100 - Prior To Serial #1291231, 8100 - Prior to Serial # 1281238)
	25-8034	Tightener Block Weldment (9100 - Serial #1291231 and Later, 8100 - Serial #1281238 and Later)
8	851-3816-1Z	3/8-16 x 1" M.B. Zinc
9	23-0112-1	Idler Shaft
10	11-0107-D	Main Apron Assy. (22 Ft.) DH667XH (Prior to Serial # 0891238 and Serial # 1191237 and Later)
	11-0107-K-T	Main Apron Assy. (22 Ft.) 667K (Serial # 0891238 thru 1191236)
	11-0125-D	Main Apron Assy. (24 Ft.) DH667XH (Prior to Serial # 0891238 and Serial # 1191237 and Later)
	11-0125-K-T	Main Apron Assy. (24 Ft.) 667K (Serial # 0891238 thru 1191236)
	11-0134-D	Main Apron Assy. (26 Ft.) DH667XH (9126 - Prior to Serial # 0891238 and Serial # 1191237 and Later, 8126 - Prior to Serial #0881276 and Serial # 1181278 & Later)
	11-0134-K-T	Main Apron Assy. (26 Ft.) 667K (9126 - Serial # 0891238 thru 1191236, 8126 - Serial #0881276 thru 1181277)
	11-0135-D	Main Apron Assy. (28 Ft.) DH667XH (Prior to Serial # 0891238 and Serial # 1191237 and Later)
	11-0135-K-T	Main Apron Assy. (28 Ft.) 667K (Serial # 0891238 thru 1191236)
	11-0136-D	Main Apron Assy. (30 Ft.) DH667XH (Prior to Serial # 0891238 and Serial # 1191237 and Later)
	11-0136-K-T	Main Apron Assy. (30 Ft.) 667K (Serial # 0891238 thru 1191236)
	11-0137-D	Main Apron Assy. (36 Ft.) DH667XH (Prior to Serial # 0891238 and Serial # 1191237 and Later)
	11-0137-K-T	Main Apron Assy. (36 Ft.) 667K (Serial # 0891238 thru 1191236)
	11	11-0142-D
11-0142-K-T		Main Apron Assy. (40 Ft.) 667K (Serial # 0891238 thru 1191236)
11	11-0107-2	Pintle Chain Link - D667XH (Prior to Serial #0891238 and Serial # 1191237 and Later)
	11-0160-1-2	Pintle Chain Link - 667K (Serial # 0891238 thru 1191236)

APRON

(2 OF 2)

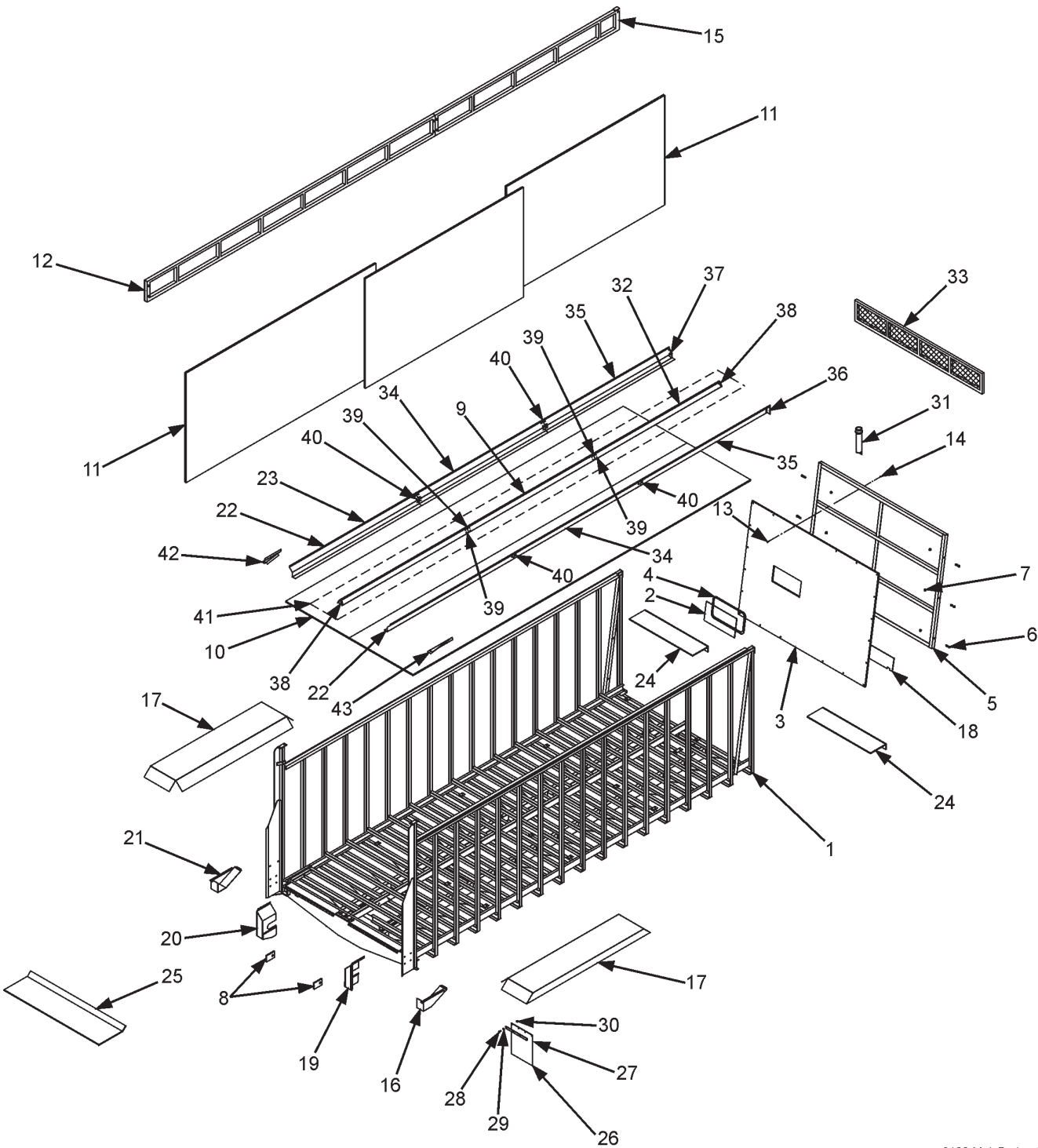


9100-ApronParts.cdr

APRON (2 OF 2)

KEY	PART NO.	DESCRIPTION
12	11-0107-6	Rivet, 7/16 x 1"
13	11-0107-5	Slat
14	11-0107-3	Attachment Link D667XH (Prior to Serial #0891238 and Serial #1191237 and Later)
	11-0160-1-1	Attachment Link 667K (Serial # 0891238 thru 1191236)
15	810-5013-Z	1/2-20 Spin Locknut
16	14-0041	RH/LH Main Drive Shaft Bearing Assembly
17	30-0002	1/8" NPT Straight Zerk
18	23-0101-HD	9100 Main Drive Shaft Assembly
19	851-5013-1.25Z	1/2-13 x 1-1/4" M.B. Zinc
20	30-0009	Coupler 1/8" NPT x 3/4" Long
21	11-0107-1	Slat w/Attachment Links D667XH (Prior to Serial #0891238 and Serial # 1191237 and Later)
	11-0107-1-K	Slat w/Attachment Links 667K (Serial #0891238 thru 1191236)
22	30-0006	1/8" NPT x 90 Degree Zerk
23	25-8000-1	Front Gate Center Support
24	810-3816-Z	3/8-16 Spin Locknut
25	30-0016	1/8" NPT Close Nipple
26	14-0051	Split Center Bearing (Replacement)

9100 MAIN BODY (1 of 3)



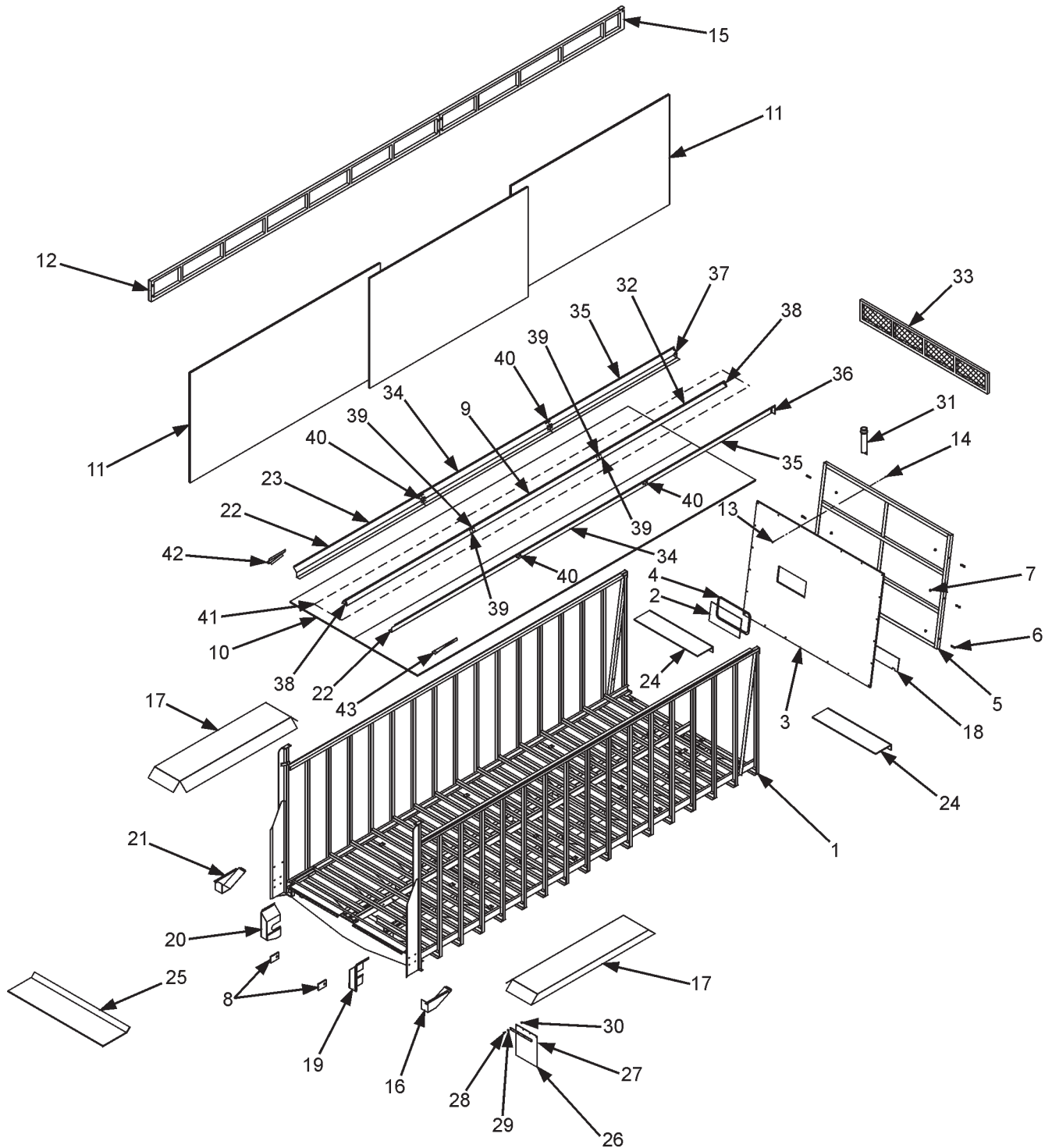
9100-MainBody.cdr

NOTE: All extensions are available in either screen or solid panel. Front extension is standard as a solid fold down. See page 30 for fold down hinged front extension.

9100 MAIN BODY (1 OF 3)

KEY	PART NO.	DESCRIPTION
1	100-8031	9122 Main Frame & Side Assembly
	100-8030	9124 Main Frame & Side Assembly
	100-8029	9126 Main Frame & Side Assembly
	100-8027	9128 Main Frame & Side Assembly
	100-8028	9130 Truck Main Frame & Side Assembly
	100-8026	9130 Trailer Main Frame & Side Assembly
	100-8025	9136 Trailer Main Frame & Side Assembly
	100-8036	9140 Trailer Main Frame & Side Assembly
2	49-0089	Plexiglas Viewing Window
3	100-8050-2	Front Gate Stainless Steel Panel
4	33-0045	Viewing Window Weather-strip (By the Foot)
5	100-8050	9100 Stainless Steel Front Gate Complete
	100-8050-1	9100 Front Gate Welded Assembly
6	851-5013-1.5Z	1/2-13 x 1-1/2" Machine Bolt Zinc
7	810-5013-Z	1/2-13 Spin Locknut
8	49-0093	Main Roller Belting Seal 1/8 x 5 x 12"
9	25-8027-1	Ctr Floor Chain Guide 96"-Center (Prior to 09 Serial #'s)
	25-8119-1	Ctr Floor Chain Guide 120"-Center (09 Serial #'s & Later)
	25-8132-1	Ctr Floor Chain Guide 96"-Center (09 Serial #'s & Later)
	25-8028-1	Center Floor Chain Guide 48"-9124 Middle (Prior to 09 Serial #'s)
10	709-48-254.5	9122 Superslick Floor Panel 48 x 254-1/2"
	709-48-287	9124 Superslick Floor Panel 48 x 287"
	709-49-302.5	9126 Superslick Floor Panel 49" x 302-1/2"
	709-49-334.5	9128 Superslick Floor Panel 49" x 334-1/2"
	709-49-350.5	9130 Superslick Floor Panel 49" x 350-1/2"
	709-49-382.5	9132 Superslick Floor Panel 49" x 382-1/2"
	709-49-431.5	9136 Superslick Floor Panel 49" x 431-1/2"
	709-49-471.5	9140 Superslick Floor Panel 49" x 471-1/2"
11	100-8042-1	Stainless Steel Side Panel 72 x 120" (9122/24/28/30/36/40)
	100-8042-2	Stainless Steel Side Panel 72 x 144" (9122/26/28/30/40)
	100-8043-1	Stainless Steel Side Panel 72 x 65" (9124)
	100-8057-1	Stainless Steel Side Panel 72 x 96" (9126/36/40)
	100-8042-3	Stainless Steel Side Panel 72 x 134-1/2" (9140)
12	25-8051	261-1/2" Left Screen Extension (9122/24)
	25-8051-S	261-1/2" Left Solid Extension (9122/24)
	25-8250	219-1/2" Left Rear Extension (9136)
	25-8250-S	219-1/2" Left Rear Solid Extension (9136)
	25-8254	139-1/2" Left Rear Screen Extension (9130)
	25-8254-S	139-1/2" Left Rear Solid Extension (9130)
	25-8256	123-1/2" Left Rear Screen Extension (9128)
	25-8256-S	123-1/2" Left Rear Solid Extension (9128)
	25-8258	91-1/2" Left Rear Screen Extension (9126)
	25-8258-S	91-1/2" Left Rear Solid Extension (9126)
	25-8262	239-5/8" Left Rear Screen Extension (9140)
	25-8262-S	239-5/8" Left Rear Solid Extension (9140)

9100 MAIN BODY (2 OF 3)



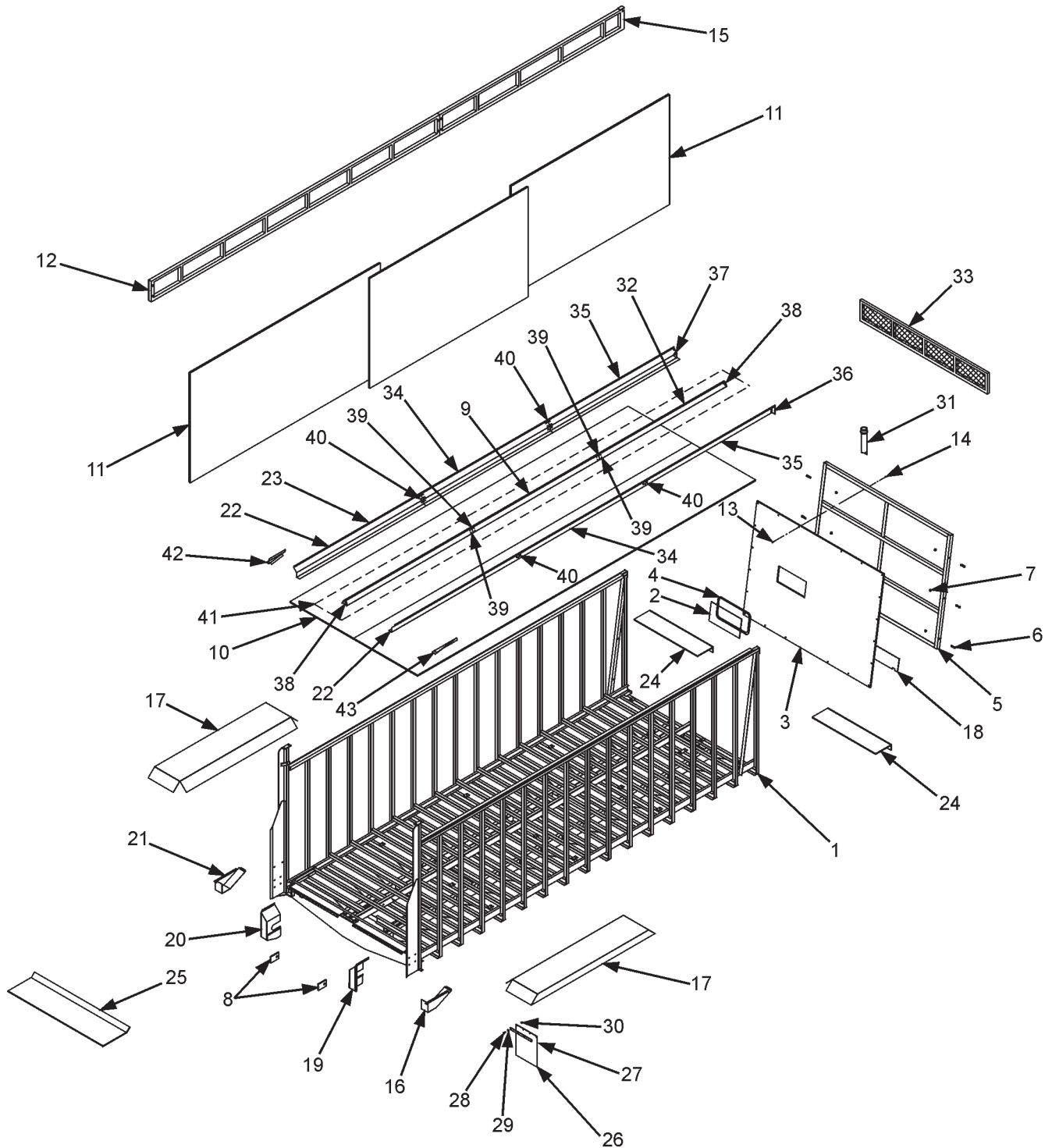
9100-MainBody.cdr

NOTE: All extensions are available in either screen or solid panel. Front extension is standard as a solid fold down. See page 30 for fold down hinged front extension.

9100 MAIN BODY (2 OF 3)

KEY	PART NO.	DESCRIPTION
NS	25-8052	261-1/2" Right Screen Extension (9122/24) (Not Shown)
NS	25-8052-S	261-1/2" Right Solid Extension (9122/24) (Not Shown)
NS	25-8053	32" Left/Right Screen Extension (8124) (Not Shown)
NS	25-8053-S	32" Left/Right Solid Extension (8124) (Not Shown)
NS	25-8251	219-1/2" Right Rear Screen Extension (9136) (Not Shown)
NS	25-8251-S	219-1/2" Right Rear Solid Extension (9136) (Not Shown)
NS	25-8255	139-1/2" Right Rear Screen Extension (9130) (Not Shown)
NS	25-8255-S	139-1/2" Right Rear Solid Extension (9130) (Not Shown)
NS	25-8257	123-1/2" Right Rear Screen Extension (9128) (Not Shown)
NS	25-8257-S	123-1/2" Right Rear Solid Extension (9128) (Not Shown)
NS	25-8259	91-1/2" Right Rear Screen Extension (9126) (Not Shown)
NS	25-8259-S	91-1/2" Right Rear Solid Extension (9126) (Not Shown)
NS	25-8263	239-5/8" Right Rear Screen Extension (9140) (Not Shown)
NS	25-8263-S	239-5/8" Right Rear Solid Extension (9140) (Not Shown)
13	851-2520-.75Z	1/4-20 x 3/4" M.B. Zinc
14	815-2520-Z	1/4-20 Nylon Insert Locknut
15	25-8252	218-1/2" Left Front Screen Extension (9126/28/30/36)
	25-8252-S	218-1/2" Left Front Solid Extension (9126/28/30/36)
	25-8264	238-1/8" Left Front Screen Extension (9140)
	25-8264-S	238-1/8" Left Front Solid Extension (9140)
NS	25-8265	238-1/8" Right Front Screen Extension (9140)
NS	25-8265-S	238-1/8" Right Front Solid Extension (9140)
NS	25-8253	218-1/2" Right Front Screen Extension (9126/28/30/36) (Not Shown)
NS	25-8253-S	218-1/2" Right Front Solid Extension (9126/28/30/36) (Not Shown)
16	24-8202	Right Hand Lower 120 Chain Shield
17	25-8008	Fender (Optional on Truck Mount Models)
18	49-0090	9100 Front Gate Belting
19	24-8204-3	Right Hand Upper 120 Chain Shield w/ Belting
20	24-8205-3	Left Hand Upper 120 Chain Shield w/ Belting
21	24-8203	Left Hand Lower 120 Chain Shield
22	25-8220-1	9100 Right/Left Side Chain Guide 120"
23	25-8024-1	Rear Center Floor Chain Guide 96" (Prior to 09 Serial #'s)
	25-8140-1	Rear Center Floor Chain Guide 120" (09 Serial #'s & Later)
24	25-8203-1	Front Floor Cover
25	24-8201-1	Rear Lower Frame Cover (Trailer Mount Only)(Prior to Ser.#0591210)
	24-8209-1	Rear Lower Frame Cover (Trailer Mount Only)(Ser.#0591210 & Later)
26	49-0100	20" Meyer Mud Flap 9100 (Prior to '09 Serial #'s)
	49-0092	30" Meyer Mud Flap 9100 ('09 Serial #'s and Later)
27	25-8212	Mud Flap Attaching Strap
28	851-3816-1.25Z	3/8-16 x 1-1/4" M.B. Zinc
29	805-0038-Z	3/8" Washer
30	815-3816-Z	3/8-16 Nylon Insert Locknut
31	33-0044	Manual Holder w/ Cap

9100 MAIN BODY (3 OF 3)



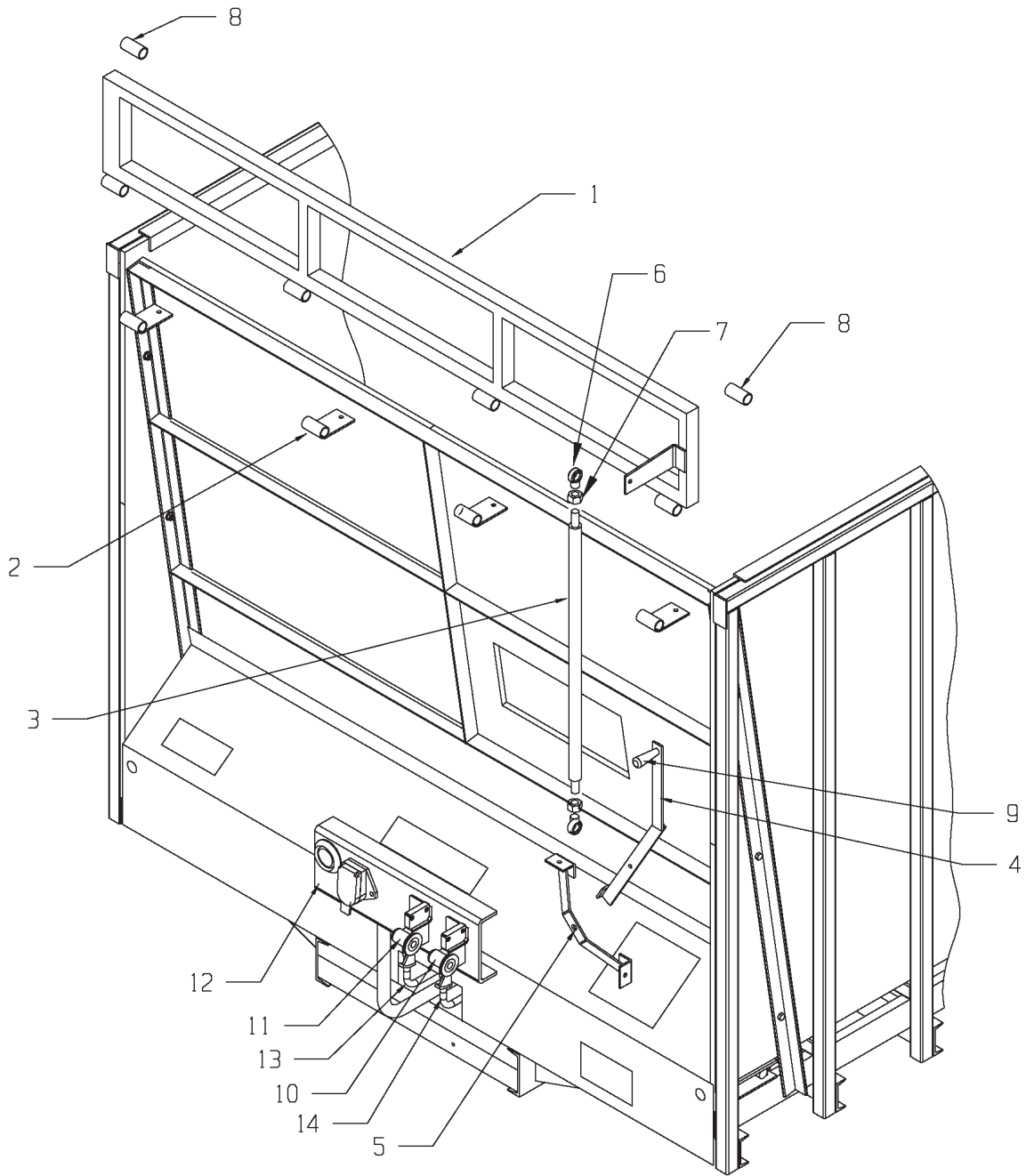
9100-MainBody.cdr

NOTE: All extensions are available in either screen or solid panel. Front extension is standard as a solid fold down. See page 30 for fold down hinged front extension.

9100 MAIN BODY (3 OF 3)

KEY	PART NO.	DESCRIPTION
32	25-8027-1	Ctr Floor Chain Guide 96"-Front (Prior to 09 Serial #'s)
	25-8135-1	Ctr Floor Chain Guide 39-3/4"-Front 9122 (09 Serial #'s & Later)
	25-8136-1	Ctr Floor Chain Guide 47-3/4"-Front 9124 (09 Serial #'s & Later)
	25-8133-1	Ctr Floor Chain Guide 87-3/4"-Front 9126 (09 Serial #'s & Later)
	25-8137-1	Ctr Floor Chain Guide 95-3/4"-Front 9128 (09 Serial #'s & Later)
	25-8138-1	Ctr Floor Chain Guide 111-3/4"-Front 9130/40 (09 Serial #'s & Later)
	25-8139-1	Ctr Floor Chain Guide 71-3/4"-Front 9132/36 (09 Serial #'s & Later)
33	25-8050-S	Front Solid Extension (All 9100's)(Optional Bolt In)
34	25-8220-1	9100 Right/Left Side Chain Guide 120"
	25-8123-1	9100 Right/Left Side Chain Guide 96"
35	25-8150-1	9122 R/L Front Floor Cap 35-1/4" (09 Serial #'s & Later)
	25-8127-1	9124 R/L Front Floor Cap 43-1/4" (09 Serial #'s & Later)
	25-8120-1	9126 R/L Front Floor Cap 83-1/4" (09 Serial #'s & Later)
	25-8128-1	9128 R/L Front Floor Cap 91-1/4" (09 Serial #'s & Later)
	25-8148-1	9132/36 R/L Front Floor Cap 67-1/4" (09 Serial #'s & Later)
	25-8129-1	9130/40 R/L Front Floor Cap 107-1/4" (09 Serial #'s & Later)
36	25-8220-2	Front Right Floor Cap End Cap
37	25-8220-3	Front Left Floor Cap End Cap
38	25-8021-1	Center V End Cap (Prior to 09 Serial #'s)
	25-8141-1	Center V End Cap (09 Serial #'s & Later)
39	25-8149-1	Center V Support Splice (09 Serial #'s & Later)
40	25-8143-1	L/R Floor Cap Support Piece (09 Serial #'s & Later)
41	9100-CV-30-UPDAT E	9130 Center V Update Kit
	9100-CV-36-UPDAT E	9136 Center V Update Kit
42	24-8101-1	Double Door Only, Left Rear Chain Return End Cap
43	24-8102-1	Double Door Only, Right Rear Chain Return End Cap
NS	25-8131-1	9100 Center V Weld in Support

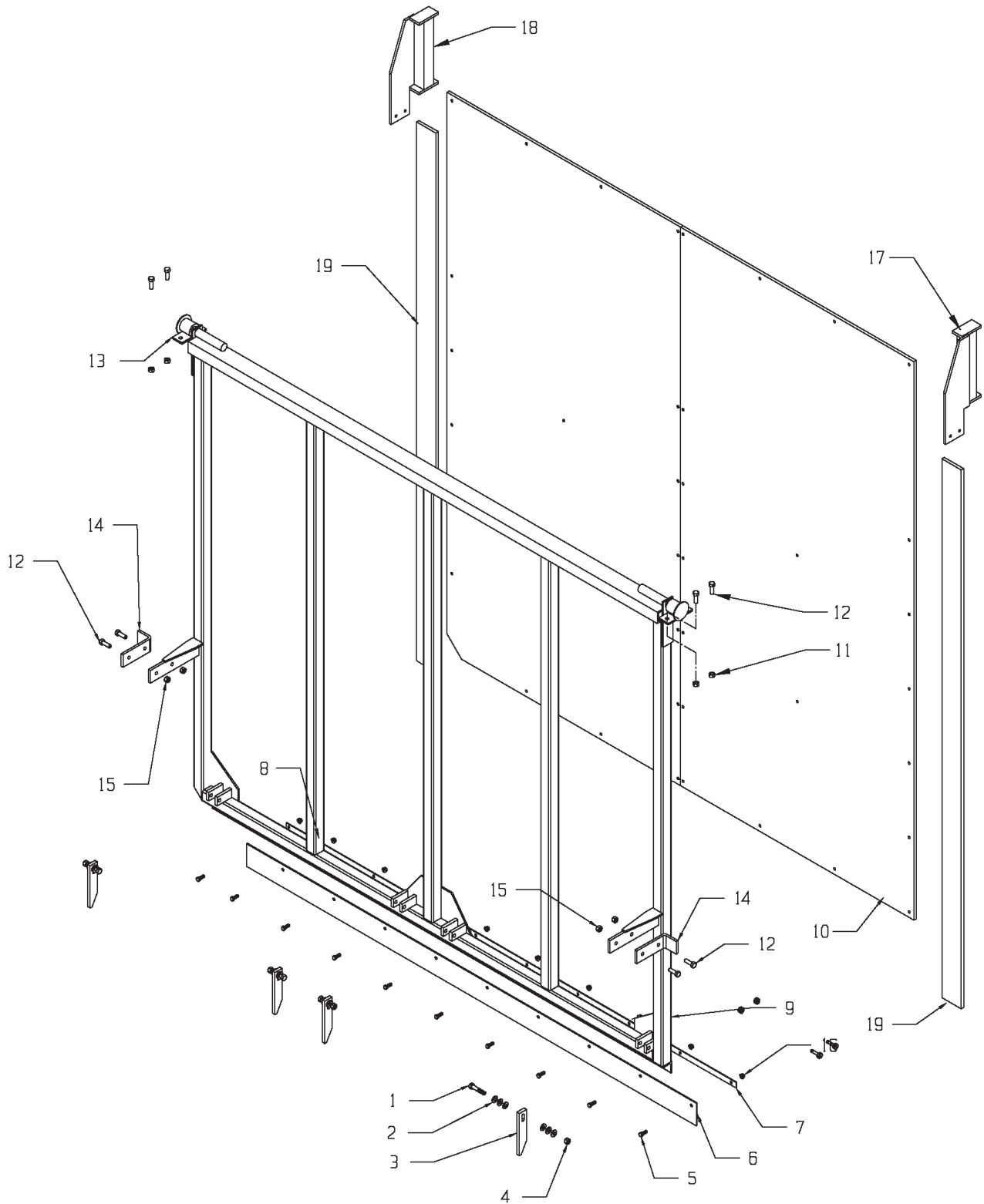
FRONT AIR HOOK-UP & FRONT FOLD DOWN EXTENSION



FRONT AIR HOOK-UP & FRONT FOLD DOWN EXTENSION

KEY	PART NO.	DESCRIPTION
1	25-8059-S	Solid Fold Down Front Extension
	25-8059	Fold Down Front Screen Extension-Optional
2	100-8016	Hinge Mount Tab
3	25-8081	Linkage Pipe Assembly
4	25-8082	Handle Welded Assembly
5	100-8014	Handle Pivot Bracket
6	16-0027	Swivel Eyelet
7	813-5020-Z	1/2-20 Fine Threaded Nut Zinc
8	100-8020-64	Gate Stop Sleeve
9	51-0003	Rubber Grip
10	100-9000-2	Emergency Glad Hand-Red
11	100-9000-3	Service Glad Hand-Blue
12	100-8025-47	Front Receptacle Bracket
13	55-0170	3/8" MPT x 3/8" Tube Connector
14	55-0171	3/8" MPT x 1/2" Tube Connector

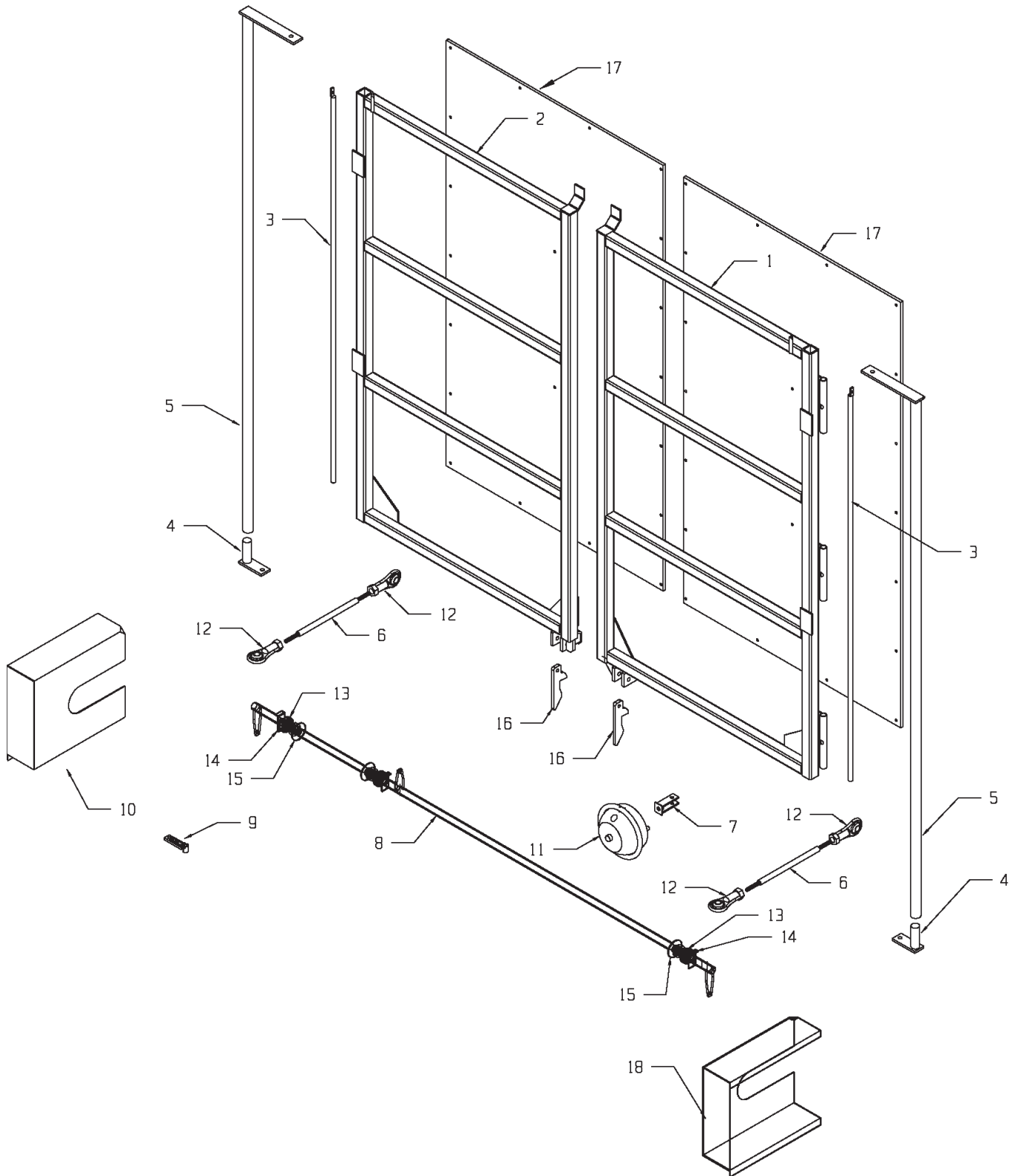
REAR DOOR



REAR DOOR

KEY	PART NO.	DESCRIPTION
1	851-5013-2.5Z	1/2-13 x 2.5 Hex Head Machine Bolt
2	805-0050-Z	1/2" Flat Washer
3	100-8012-7	Backgate Latch
4	814-5013-Z	1/2-13 Center Locknut
5	851-2520-.75Z	1/4-20 x 3/4" M.B. Zinc
6	49-0086	Backgate Belting
7	25-8005-1	Belting Attaching Strip, Right Hand
8	25-8005-2	Belting Attaching Strip, Left Hand
9	100-8055	Backgate Assembly Complete, (Standard Height Gate 82-1/2")
	100-8056	Backgate Assembly Complete, (High Back Gate 94-1/2")
9A	100-8015-1	Backgate Welded Assembly, (Standard Height Gate 82-1/2")
	100-8017-1	Backgate Welded Assembly, (High Back Gate 94-1/2")
10	100-8055-2	Standard Rear Gate Stainless Panel 48 x 80"
	100-8056-1	High Rear Gate Stainless Panel 48 x 92"
11	810-5013-Z	1/2-13 Spin Locknut
12	851-5013-1.5Z	1/2-13 x 1.5 Hex Head Machine Bolt
13	100-8012-15	Backgate Hinge Weldment
14	100-8013-6	Gate Stop
15	815-5013-Z	1/2-13 Nylon Locknut
16	810-2520-Z	1/4-20 Spin Locknut
17	100-8062	Right Pivot Extension Assembly for (All Models Prior to 0591212)(High Gate Truck Mount Only 0591212 thru Serial # 1191200)
	100-8066	Right Pivot Extension Assembly for Std Gate (Trailers 0591212 and Later) (Truck Mounts 1191201 and Later)
	100-8064	Right Pivot Extension Assembly for High Gate (Trailers 0591212 and Later) (Truck Mounts 1191201 and Later)
18	100-8063	Left Pivot Extension Assembly for (All Models Prior to 0591212)(High Gate Truck Mount Only 0591212 thru Serial # 1191200)
	100-8067	Left Pivot Extension Assembly for Std Gate (Trailers 0591212 and Later) (Truck Mounts 1191201 and Later)
	100-8065	Left Pivot Extension for High Gate (Trailers 0591212 and Later) (Truck Mounts 1191201 and Later)
19	49-0088	Side Gate Belting Seal 66"

OPTIONAL DOUBLE DOOR



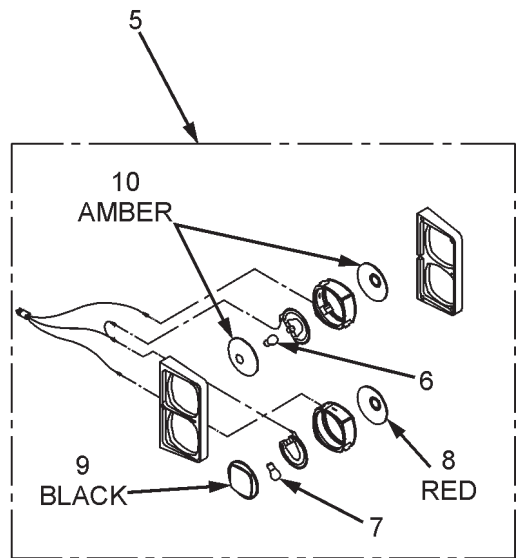
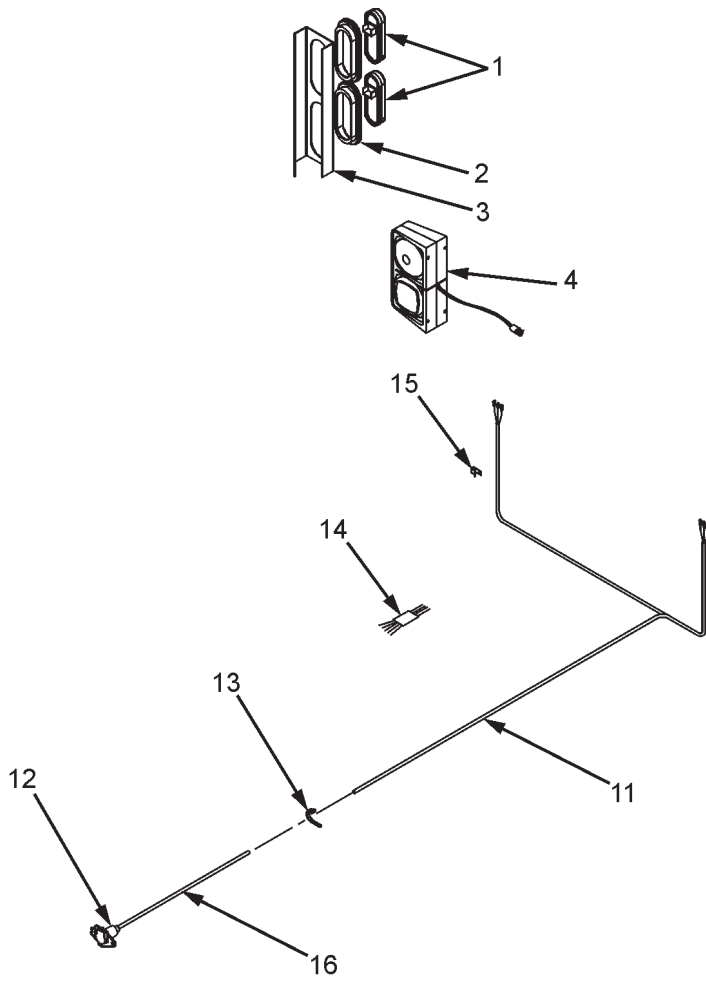
OPTIONAL DOUBLE DOOR

KEY	PART NO.	DESCRIPTION
1	100-8109-1	9100 Right Hand Door Welded Assembly
	100-8109	9100 Right Hand Door Complete
2	100-8110-1	9100 Left Hand Door Welded Assembly
	100-8110	9100 Left Hand Door Complete
3	100-8102	Double Door Gate Hinge Pin Weldment
4	100-8103	Double Door Bottom Linkage Arm Weldment
5	100-8104	Double Door Linkage Pipe Weldment
6	100-8111	9100 Double Door Linkage Tie Rod Weldment
7	100-8106	Double Door Linkage Clevis Weldment
8	100-8112	9100 Double Door Linkage Pivot Shaft Weldment
9	100-8108	Double Door Solenoid Mount Bracket
10	24-8208	Double Door Left #120 Chain Shield
11	55-0154	Double Door Air Chamber
12	16-0027	Double Door 1/2" Swivel Eyelet
13	14-0002-3	1-1/4" Bearing W/Lock Collar
14	14-0003-1	1-1/4" 2-Hole Pillow Block Flange
15	14-0003-2	1-1/4" 2-Hole Plain Flange
16	100-8100-6	Double Door Latch
17	100-8055-2	Door Panel
18	24-8207	Double Door Right #120 Chain Shield

THE FOLLOWING ITEMS ARE NOT ILLUSTRATED	
49-0033	Double Door Back Gate Belting 5" x 42"
55-0150	3/8" Air Line (25' Required)
55-0151	3/8" Hex Plug
55-0152	3/8 x 3/8 x 90 Degree Elbow
55-0153	3/8" x 1/8" Connector
55-0155	12 Volt Solenoid Valve

Note: On double door units the air supply needs to be plumbed in from the trucks. On trailer units a power supply needs to be supplied to the trailer front.

HIGHWAY TRANSPORT LIGHTS

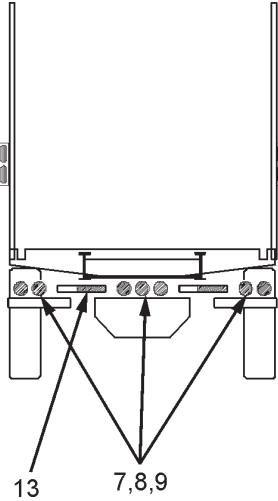
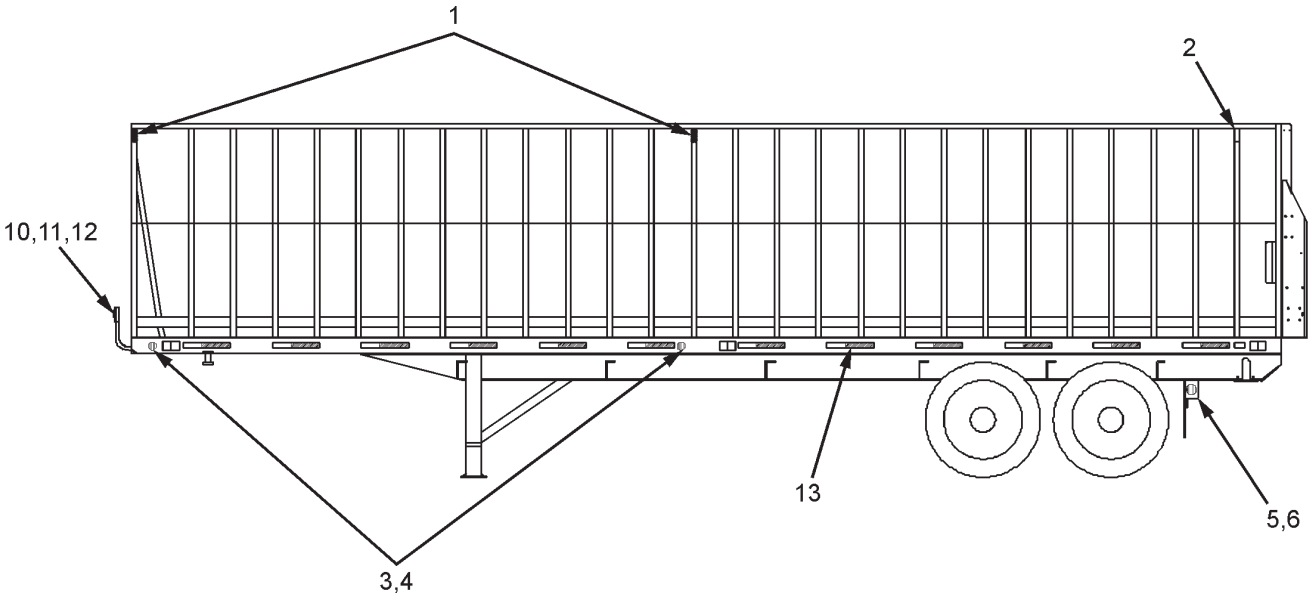


9100-LightsParts.cdr

HIGHWAY TRANSPORT LIGHTS

KEY	PART NO.	DESCRIPTION
1	56-0080	6" Oval Red LED Light
2	56-0082	6" Oval Grommet
3	100-8025-72	LED Light Bracket L/R (Trailers SN 1091221 & Later) (Truck Mounts SN 1191237 & Later)
4	56-0031-TR	Truck Mount Dual Light RH w/4-prong connector (Prior to Serial # 1191237)
4A	56-0034	Adapter Harness Tri-Plug to Quad Plug (Needed in addition to light for Serial #'s Prior to 0691201)
5	56-0030-TR	Truck Mount Dual Light LH w/4-Prong Connector (Prior to Serial #1191237)
5A	56-0034	Adapter Harness Tri-Plug to Quad Plug (Needed in addition to light for Serial #'s Prior to 0691201)
6	56-0001-5	#1156 Single Filament Bulb
7	56-0001-4	#1157 Dual Filament Bulb
8	56-0001-2	Red Lens (Fit Inside Housing)
	56-0030-2	Red Lens (Fit Over Housing)
9	56-0001-3	Bezel Blank, Black (Fit Inside Housing)
	56-0030-3	Bezel Blank, Black (Fit Over Housing)
10	56-0001-1	Amber Lens (Fit Inside Housing)
	56-0030-1	Amber Lens (Fit Over Housing)
11	56-0003	Ag Light Harness w/Tri Plugs (Prior to Serial #06T91201)
	56-0032	Ag Light Harness w/Module (Truck Mounts Only, Serial #0691201 thru 1191236)
	56-0083	LED Light Y-Harness (Truck Mounts Only, 1191237 & Later)
	56-0035	9100 Harness (Trailer Models Only Prior to Serial #1091221)
	56-0035-LED	9100 LED Harness (Trailer Models Serial #1091221 & Later) (Truck Mounts Serial #1191237 & Later)
12	56-0004	#1232 4-Way Socket 4-Pin (Truck Mounts Only)
13	32-0026	14" Nylon Tie Strap
14	56-0028	Tail Light Converter (Truck Mounts Only Prior to Serial #1191237)
15	32-0024	3/8" Plated Loom Clamp
16	56-0037	Trailer Cable by the foot (with LED Light Harness) (Truck Mounts Only (1191237 and Later)

TRAILER LIGHTING

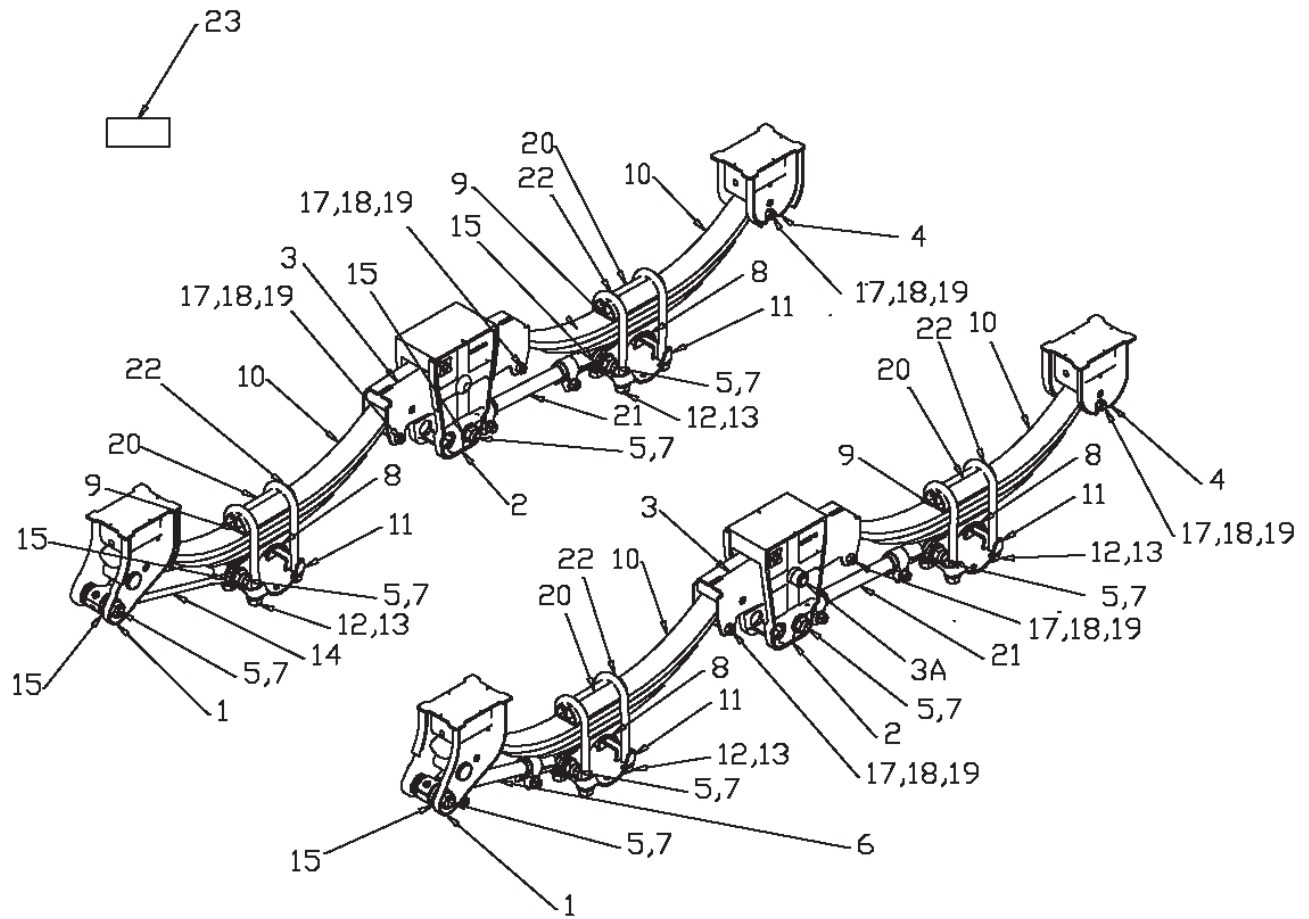


9100-TrailerLighting.cdr

TRAILER LIGHTING

KEY	PART NO.	DESCRIPTION
1	56-0023-LED	LED Amber Clearance Light
2	56-0024-LED	LED Red Clearance Light
3	56-0026	2.5" Round Grommet
4	56-0025-LED	LED Amber Marker Light
5	56-0076-2	2.5" Round Grommet (Trailer Models)
	56-0026	2.5" Round Grommet (Truck Mount Models)
6	56-0076-1	2.5" Red LED Marker Lamp (Trailer Models)
	56-0036-LED	2.5" LED Red Marker Lamp (Truck Mount Models)
7	56-0075-2	Large Round Grommet
8	56-0075-1	Stop/Tail/Turn 6 Diode LED Lamp
9	56-0078	Rear Bumper Light Harness w/ LED Lights
10	56-0077-3	Pigtail, Clearance Lamp
11	56-0077-2	Model 30 Grommet
12	56-0077-1	2" Clearance Lamp w/ABS Logo
13	46-8100-4	Red and White Reflective Tape (by the foot)

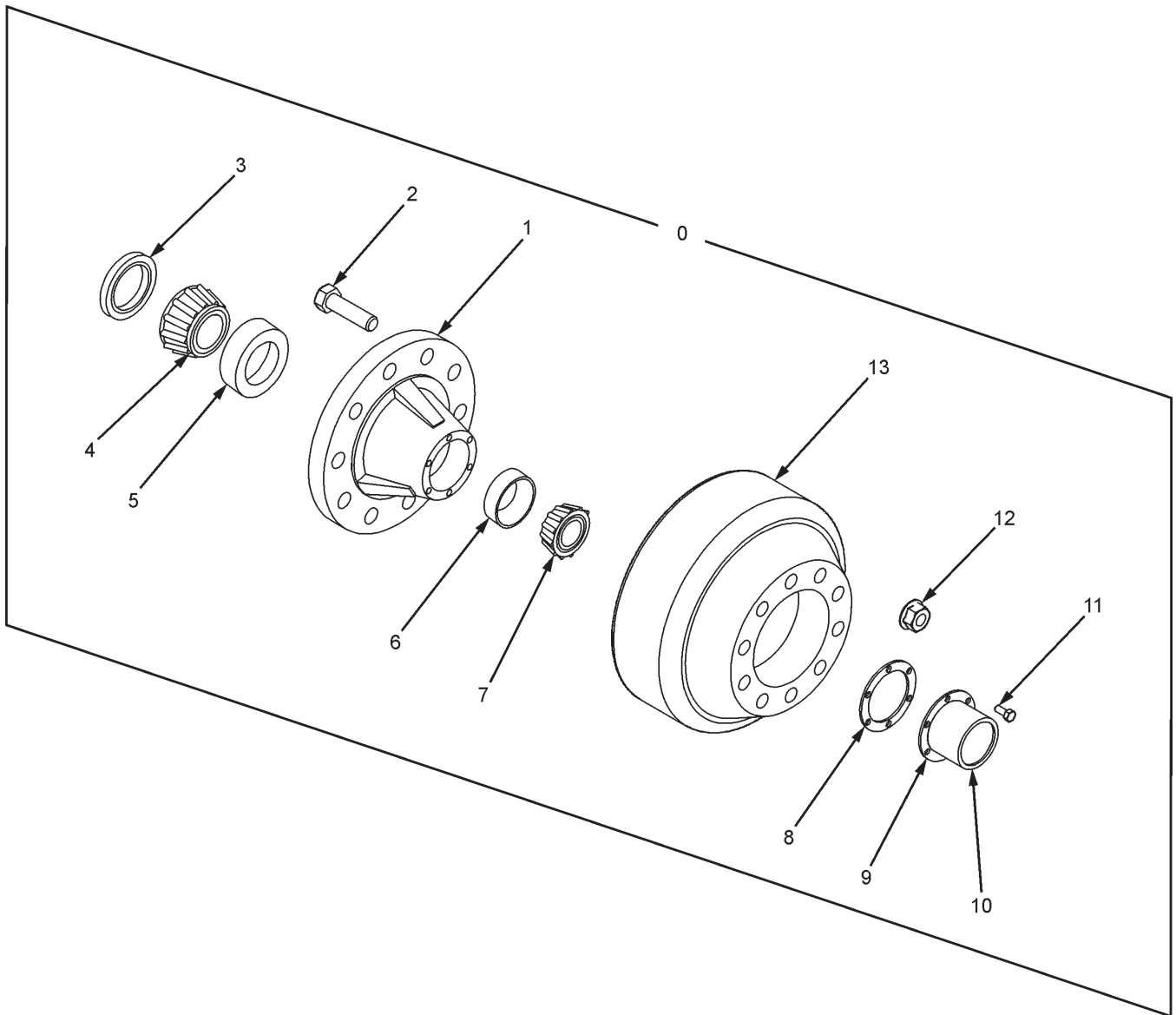
TRAILER SUSPENSION



TRAILER SUSPENSION

KEY	PART NO.	DESCRIPTION	QTY.
1	75-2433-3-1-1	Front Spring Hanger Assembly	2
2	75-2400-2-1	LH/RH Center Rocker Hanger Assembly 49"	2
3	75-2400-2-1-2	Rocker Assembly w/Bushing 49" LH/RH	2
	75-2433-3-2-1-2	Rubber Rocker Bushing Only	2
	75-2433-3-2-1-4	Rocker Replacement Bolt Kit	2
4	75-2433-3-1-2	Rear Spring Hanger Assembly2	2
5	75-2433-3-1-3	Radius Rod Bolt 1-14 UNS X 5"	8
6	75-2433-3-1-5	Radius Rod W/Bushing 19-1/4" Long	1
	75-2433-3-1-5-1	Radius Rod Bushing Only	2
7	75-2433-3-1-4	Flange Locknut 1-14 UNS	8
8	75-2433-3-1-8	Spring Seat	4
9	75-2400-2-2	Galvanized Liner	4
10	75-2400-3-3	Spring Assembly, High Arch	4
11	75-2433-3-1-6	Bottom Plate	4
12	75-2433-3-1-10	Washer	16
13	75-2433-3-1-9	Hex Nut 7/8-14	16
14	75-2433-3-1-12	Non-Adj. Radius Rod W/Bushings	1
	75-2433-3-1-5-1	Radius Rod Bushing Only	2
15	75-2400-2-3	Washer Bushing	8
17	75-2433-3-2-3	Hex Lock Nut 5/8-18 UNF	6
18	75-2433-3-2-4	Sleeve Spacer	6
19	75-2433-3-2-5	Hex Bolt 5/8-18 UNF X 4-1/2"	6
20	75-2433-3-1-7	Top Plate	4
21	75-2433-3-2-6	Radius Rod W/Bushing 20-1/4" Long	2
	75-2433-3-1-5-1	Radius Rod Bushing Only	4
22	75-2400-3-2	U-Bolt 7/8x3x12-1/4	8
23	75-2433-3-1-13	Decal Torque Value	1

WHEEL END PARTS

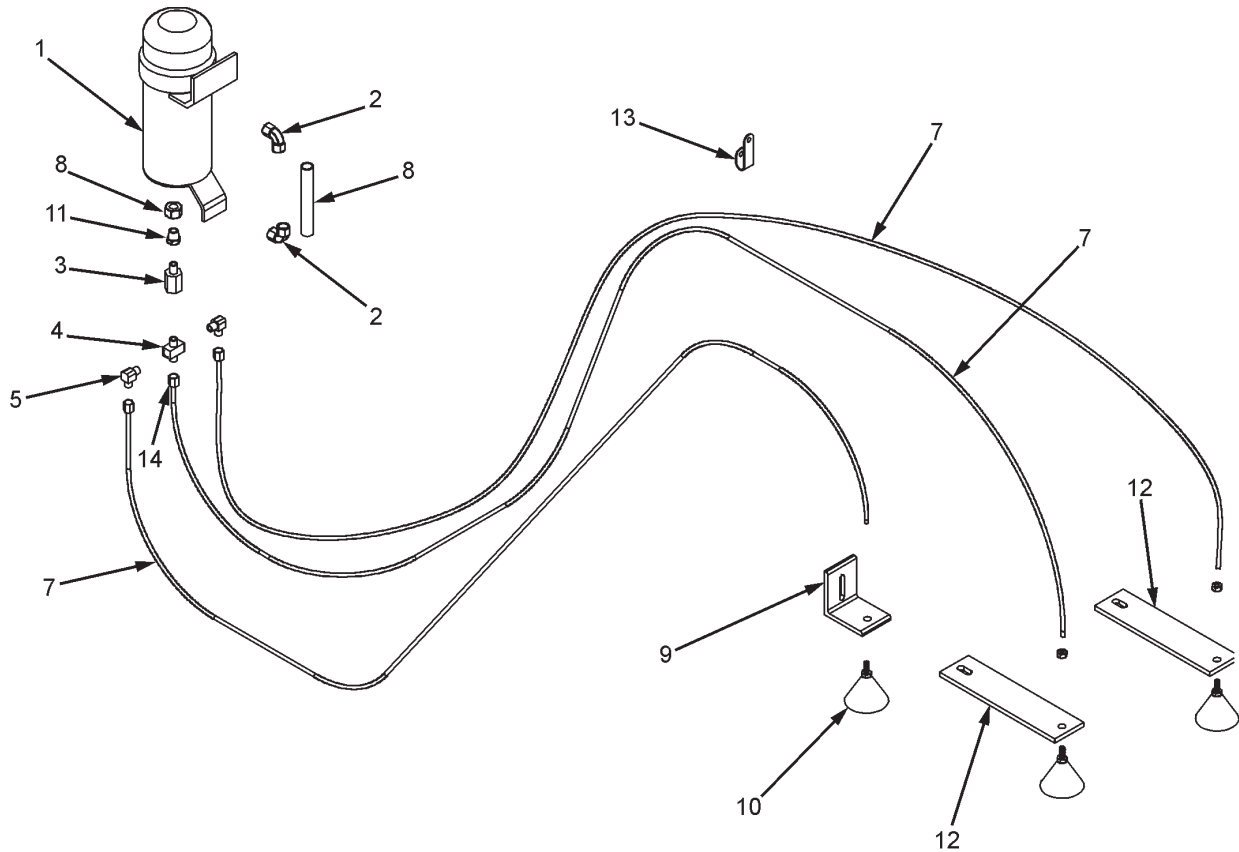


9100-WheelEndParts.cdr

WHEEL END PARTS

KEY	MEYER PART NO.	DESCRIPTION
0	75-2410-1-1-1	25K Hub & Drum Assembly with 3.94" Studs
	75-2410-1-1-1-L	25K Hub & Drum Assembly with 4.79" Studs
1	75-2410-1-1	25,000# Hub W/Races & 3.94" Studs
	75-2410-1-1-L	25,000# Hub W/Races & 4.79" Studs
	75-2410-1-HD-2	Brake Hardware Kit
2	75-0223-10	M22x1.5, 3.94" Studs
	75-0223-10-L	M22x1.5, 4.79" Studs
3	75-2410-1-1-1-4	Oil Seal 25,000# Hub
4	75-2410-1-1-1-5	Inner/Outer Bearing Timken 25,000# Hub
5	75-2410-1-1-1-6	Inner Race Timken 25,000# Hub
6	75-2410-1-1-1-7	Outer Race Timken 25,000# Hub
7	75-2410-1-1-1-5	Inner/Outer Bearing Timken 25,000# Hub
8	75-2410-1-1-1-9	Hub Cap Gasket 25,000# Hub
9	75-2410-1-1-1-3	Hub Cap 25,000# Hub Oil
10	75-2410-1-1-1-3-1	Hub Cap Oil Plug 25,000# Hub
11	851-3118-.75Z	5/16X3/4" Machine Bolt Zinc
12	75-0223-11	Flange Nut
13	75-2410-1-HD-1-2	Brake Drum
NS	53-9090-MFA	425-65R22.5 20PLY mtd. On 12.25x22.5 Machine Finished (Not Shown)
NS	53-9191	11R22.5 14PLY Mtd. On 8.25x22.5 Steel Wheels (Not Shown)

ROLLER CHAIN OILER

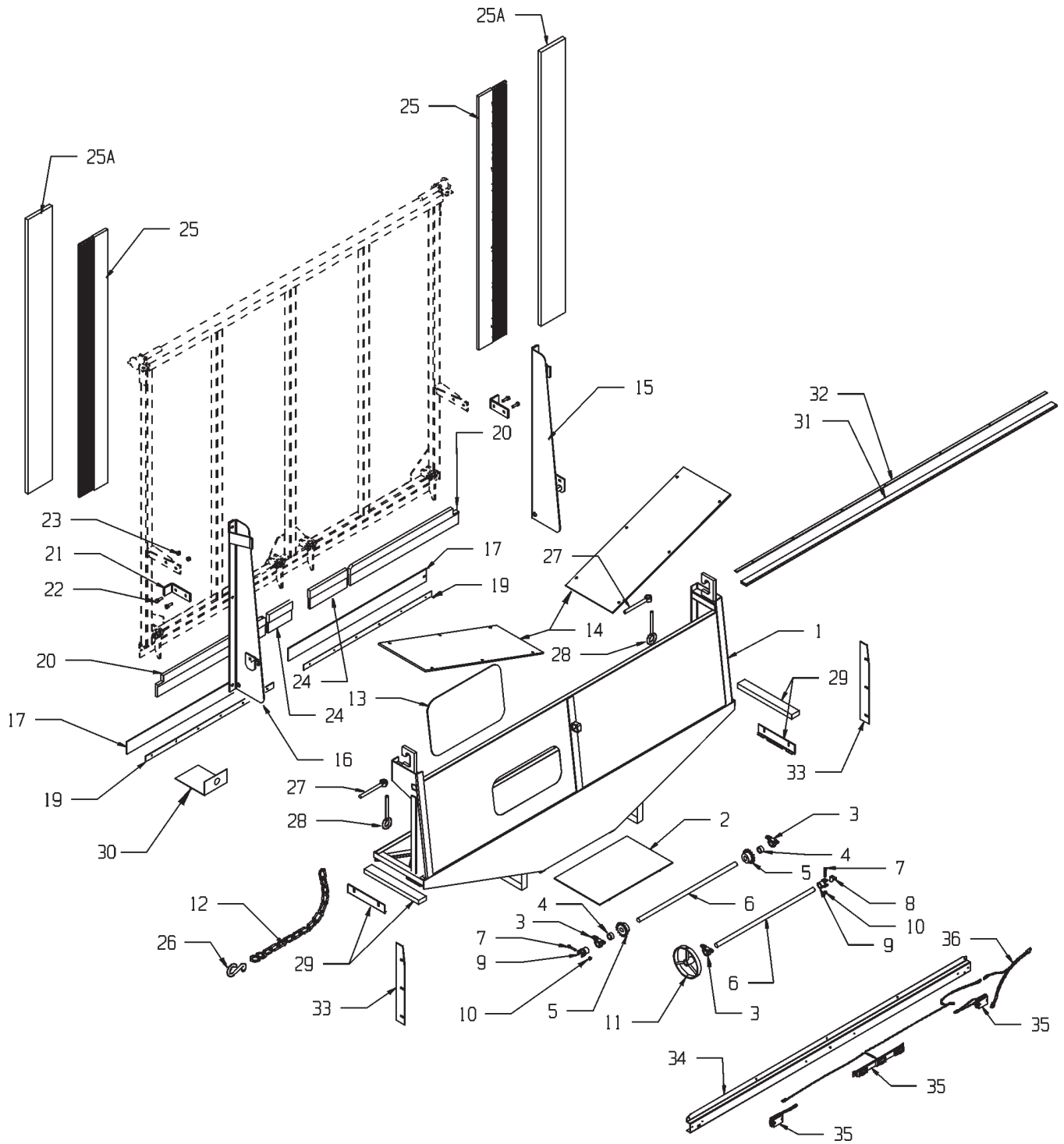


9100-RollerChainOiler.cdr

KEY	PART NO.	DESCRIPTION
1	33-8001-1	Oil Reservoir
	33-8001	9100 Oil Reservoir Complete w/Fittings
2	30-0015	1/4 x 90 Degree Elbow
3	33-8000-6	Ball Valve
4	33-8002-2	Brass Female Cross
5	33-8000-5	90 Degree Brass Compression Fitting
6	33-8001-2	Oiler Site Tube
7	952-0001-1-21	Tubing, 5/32" Nylon (By the Foot)
8	33-8001-4	1/8" NPT Nut
9	33-8000-10	Chain Brush Holder-Center
10	952-0001-1-25	Brush Assembly with 5/32" Insert & 1/2-20 Nut
11	33-8001-5	1/8" NPT Nipple
12	33-8000-11	Chain Brush Holder-Outer
13	08-0050	5/16" Loom Clamp
14	33-8002-1	Straight 5/32x1/8" Male Connector Fitting

This Page Intentionally Blank

9100 OPTIONAL GRAIN KIT



9100 OPTIONAL GRAIN KIT

KEY	PART NO.	DESCRIPTION
1	25-8060	Grain Kit Main Body
2	25-8061	Grain Kit Gate Weldment
3	124	1" Pillow Block Bearing
4	323	1" Lock Collar
5	10-0001	Sprocket 50B13, 1" Bore, 1/4" Keyway
6	23-0099	Gate Shaft 1" x 32"
7	851-3816-2Z	3/8-16 x 2" M.B. Zinc
8	15-0006-1	Universal Knuckle
9	15-0006-2	Universal Sleeve Assembly
	15-0006	Complete Universal Knuckle/Sleeve Assy.
10	815-3816-Z	3/8-16 Nylon Insert Locknut
11	25-8062	Grain Kit Door Handle
12	25-8027	Handle Lock Chain
13	49-0089	Plexiglas Window 2-1/2" Radius
13A	33-0049	Window Weather-strip (By the Foot) (Not Shown)
14	49-0087	Poly Bottom Panel
15	25-8078	R.H. Gate Stop Weldment Hi/Lo Gate (Prior to Serial #0791222)
	25-8178	R.H. Gate Stop Hi/Lo Gate (Serial #0791222 & Later)
16	25-8079	L.H. Gate Stop Weldment Hi/Lo Gate (Prior to Serial #0791222)
	25-8179	L.H. Gate Stop Hi/Lo Gate (Serial #0791222 & Later)
17	49-0036	Chain Return Seal
19	25-8067-1	Chain Return Seal Mount Strap
20	52-0005-2	24" Broom (Prior to Serial#0791222)
	52-0005-6-1	35-1/2" Broom Notched (Serial #0791222 & Later)
21	100-8013-6	Rear Gate Stop
22	851-5013-1.5Z	1/2-13 x 1-1/2" M.B. Zinc

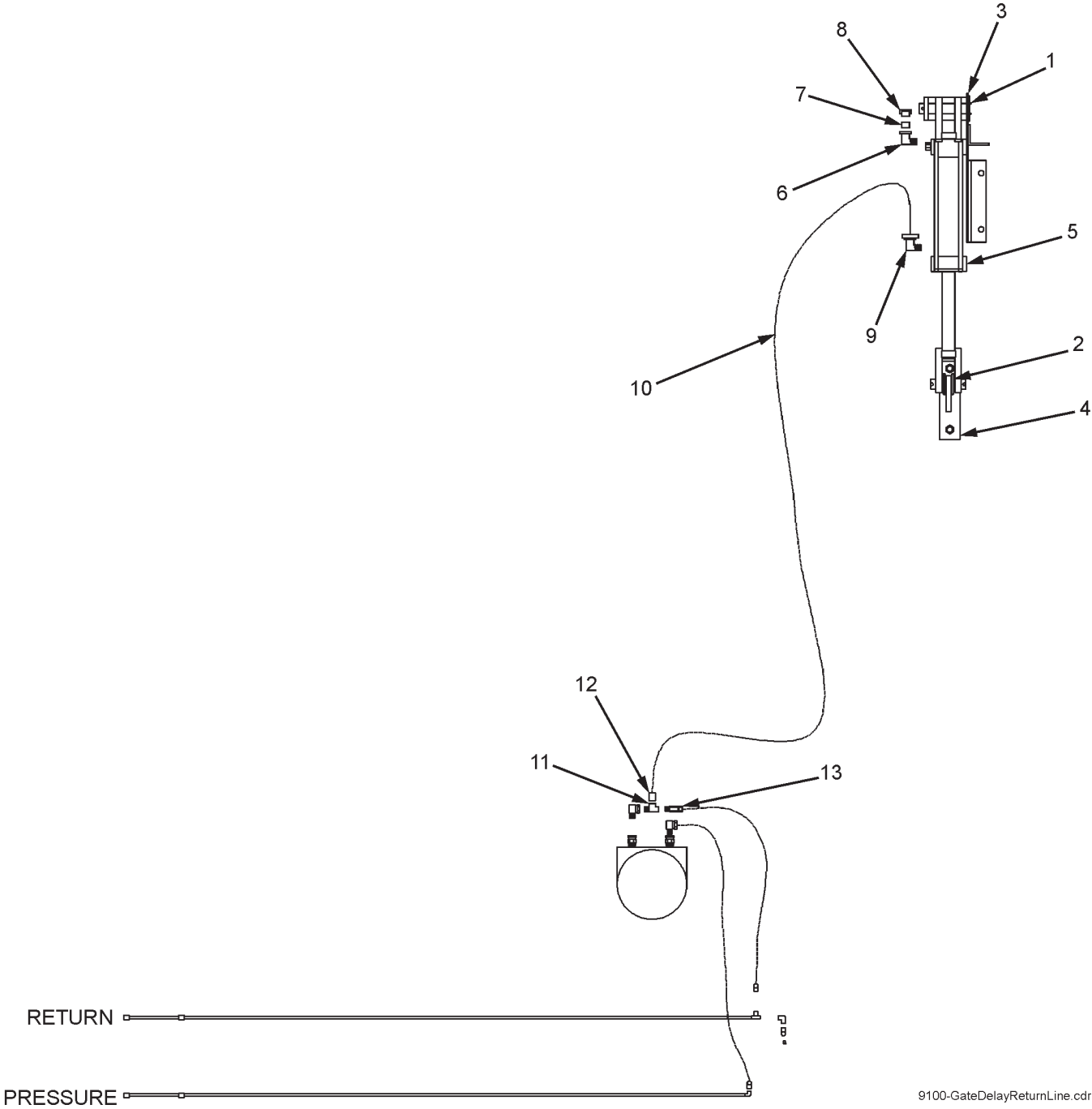
KEY	PART NO.	DESCRIPTION
23	815-5013-Z	1/2-13 Nylon Insert Locknut Zinc
24	52-0005-3	18-1/2" Broom (Prior to Serial #0791222)
	52-0005-6-2	9-3/16" Left Inner Broom (Serial #0791222 & Later)
25	52-0005-5	Gate Seal Brush 64" Brush
25A	49-0088	Side Gate Belting Seal 66" (Serial #0781239 & Later)
26	57-0009-2	S-Hook
27	33-0028	Handle Nut
28	811-5013-4Z	1/2 x4" Eyebolt (6" Overall)
29	25-8065	Seal Gasket (Prior to Serial #0781239)
	25-8060-26	Lower Side Seal Filler Panel (Serial #0781239 & Later)
30	25-8066	Main Roller Center Mount Cover
31	25-8060-21	Rear Belting Seal Metal Strip
32	49-0042	Rear Belting Seal
33	25-8060-27	Side Seal Filler Panel (Serial #0791222 & Later)
34	25-8060-23	Rear Light Mount Bracket
35	56-0050	Light Harness and Lamp Kit
	56-0050-LED	LED Light Harness & Lamp Kit
	56-0050-1	Center Lamp Bar Only
	56-0050-1-LE D	LED Center Lamp Bar Only
	56-0050-2	Left Rear Lamp Only
	56-0050-2-LE D	LED Left Rear Lamp Only
	56-0050-3	Harness Only
	56-0050-3-LE D	LED Harness Only
56-0050-4	Right Rear Lamp Only	
56-0050-2-LE D	LED Right Rear Lamp Only	

THE FOLLOWING ITEMS ARE NOT ILLUSTRATED

25-8211-1	Flow Control Mount Bracket
55-0029	3/4" Hose x 36" Long
55-0047	3/4" Hose x 42" Long
55-0049	3/4" Hose x 65" Long
55-0076	Flow Control
55-0082	3/4 x 90 Degree Street Elbow

9100-GDS-RL-PKG
GATE DELAY/RETURN LINE

SERIAL # 1091201 AND LATER



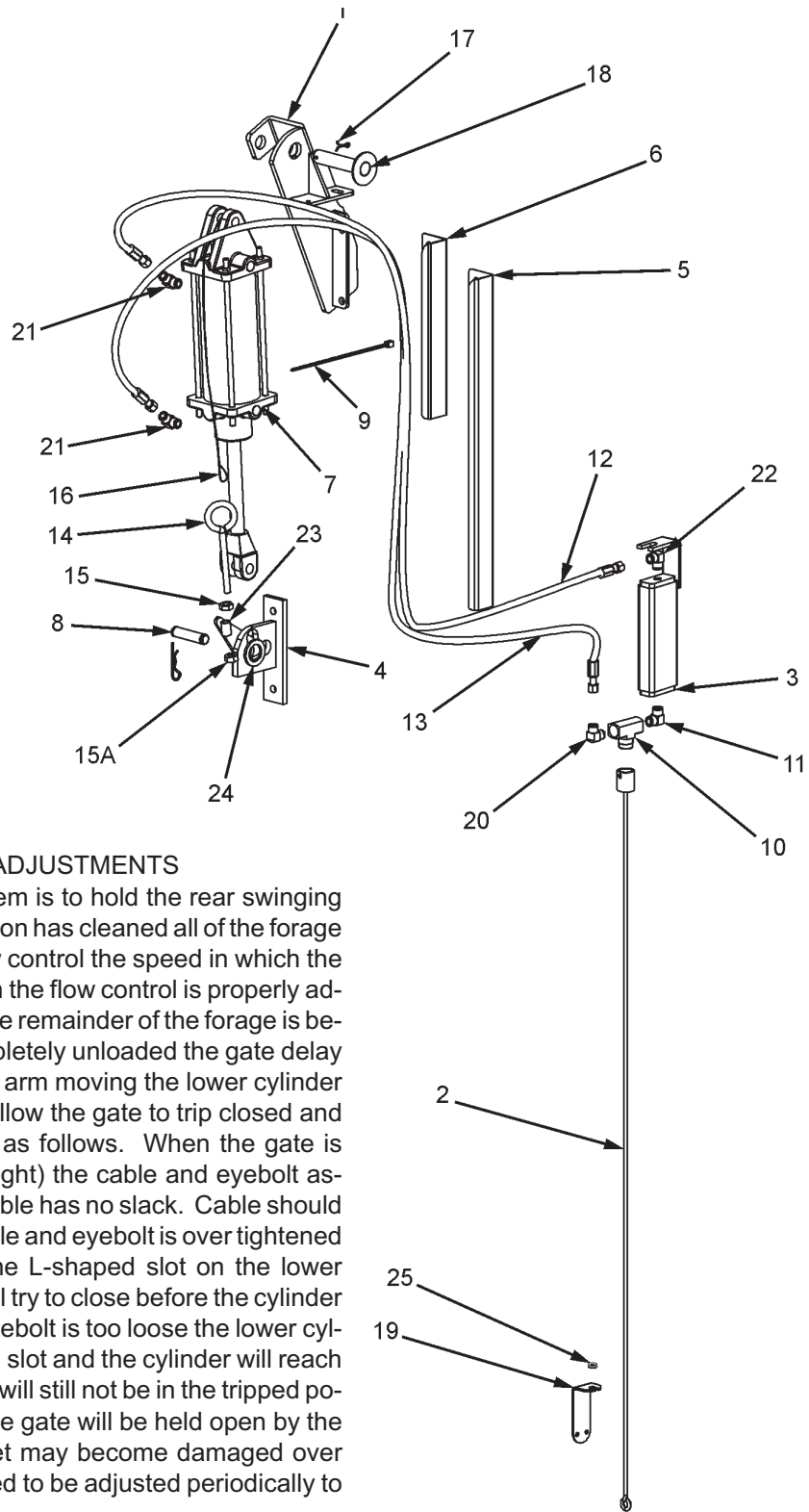
9100-GateDelayReturnLine.cdr

9100-GDS-RL-PKG
GATE DELAY/RETURN LINE
SERIAL # 1091201 AND LATER

KEY	PART NO.	DESCRIPTION
	9100-GDS-RL-PKG	Return Line Gate Delay Closing Option
	9100-GDS-RLE-PKG	9100 w/Extension Option Return Line Gate Delay Closing Option
	9100-GDS-RL-KIT	Update Package to Switch from Ground Control Rod to Return Line
1	25-8092-1	Gate Regulator top Shaft
2	25-8097-1	Lower Sleeve Spacer
3	25-8090-1	Top Cylinder Bracket
4	25-8107	Lower Mount Plate Welded Assembly
5	55-0093	Hydraulic Cylinder
6	55-0195	3/8 Male x 1/4" Female Street Elbow
7	55-0108	1/4 x 1/8" Male to Female Bushing
8	55-0107	1/8" NPT Vent
9	55-0196	3/8M x 1/4" Swivel Female x 90 Degree Elbow
10	55-0202	1/4 X 228" Hose
11	55-0201	3/4" Tee Fitting
12	55-0174	3/4 X 1/4" Bushing
13	55-0007-B-GDRL	Check Valve W/Back Pressure Spring

8100-GDS-SM & 8100-GDS-SME GATE DELAY PACKAGE W/SIDE MOUNT CONTROL

SN #0791233 THRU #1091200



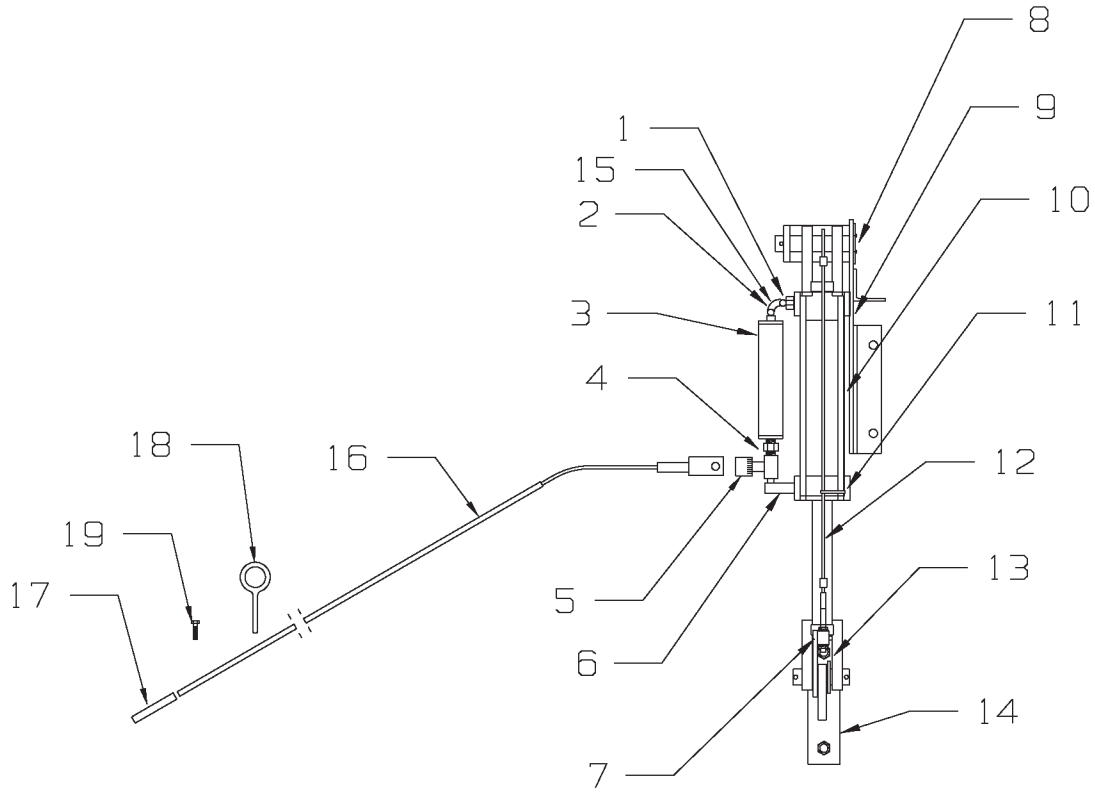
GATE DELAY INSTRUCTIONS & ADJUSTMENTS

The purpose of the gate delay system is to hold the rear swinging gate in the open position until the apron has cleaned all of the forage out of the box. By adjusting the flow control the speed in which the gate closes can be regulated. When the flow control is properly adjusted the gate will slowly close as the remainder of the forage is being unloaded. Once the box is completely unloaded the gate delay will reach a trip position with the trip arm moving the lower cylinder shaft out of the horizontal slot and allow the gate to trip closed and latch. For proper operation adjust as follows. When the gate is completely closed (tight to rear upright) the cable and eyebolt assembly should be adjusted so the cable has no slack. Cable should be tight but not over tightened. If cable and eyebolt is over tightened the lower cylinder will trip out of the L-shaped slot on the lower bracket prematurely and the gate will try to close before the cylinder is fully extended. If the cable and eyebolt is too loose the lower cylinder will not trip out of the L-shaped slot and the cylinder will reach its maximum stroke and the trip arm will still not be in the tripped position allowing the gate to close. The gate will be held open by the top cylinder bracket and the bracket may become damaged over time. The eyebolt and cable will need to be adjusted periodically to maintain proper operation.

8100-GDS-SM & 8100-GDS-SME
GATE DELAY PACKAGE W/SIDE MOUNT CONTROL
SN #0791233 THRU #1091200

KEY	PART NO.	DESCRIPTION	QTY.
1	25-8090-1	8100 GATE TOP CYLINDER BRACKET	1
2	25-8105	SIDE MOUNT GRND CONT ROL ROD	1
3	25-8104	SIDE MOUNT OIL RESEVOIR	1
4	25-8093-1	8100 GATE LOWER SHAFT BRACKET	1
5	24-8009	SIDE MT OIL RES 12" HOSE SHIELD 25-1/2"	AR
6	24-8010	SIDE MNT OIL RES HOSE SHIELD 13-1/2"	AR
7	55-0093	HYD CYLINDER 2" BORE 8" STROKE 18-1/4"	1
8	955-3802-10	CYLINDER PIVOT PIN WITH CLIP	1
9	952-0001-7	NYLON TIE STRAPS	1
10	55-0094	FLOW CONTROL	1
11	55-0096	3/8" NPTF 90* MALE PIPE ELBOW	1
12	55-0193	1/4"x 52" LONG HOSE HI GATE W/EXT	AR
	55-0192	1/4"x 40" LONG HOSE REG GATE NO/EXT	AR
13	55-0194	1/4"x 62-1/2"" LONG HOSE HI GATE W/EXT	AR
	55-0193	1/4"x 52" LONG HOSE REG GATE NO/EXT	AR
14	811-3816-3Z	3/8-16x3" EYEBOLT ZINC	1
	25-8098	GATE TRIP CABLE ASSEMBLY W/EYEBOLT	1
15	810-3816-Z	3/8" SPIN LOCK NUT	1
15A	815-3816-Z	3/8" NYLOC NUT	1
16	36-0009	1/8" STAINLESS AIRCRAFT CABLE (BY THE FT)	2.41
17	823-19-2	3/16X2" COTTER PIN	1
18	25-8092-1	REAR GATE TOP SHAFT ASSY.	1
19	25-8106-1	GROUND CONTROL ROD BRACKET	1
20	55-0196	3/8Mx1/4" SWIVEL FEMALEx90 ELBOW	1
21	55-0195	3/8 MALE-1/4FEMALE STREET ELBOW	2
22	55-0191	1/4" MALE TO 1/4" FEMALE SWIVEL COUPLER	1
23	25-8096	GATE RELEASE TRIP ARM ASSEMBLY	1
24	25-8097-1	GATE LOWER SLEEVE SPACER	1
25	33-1003	RUBBER GROMMET	1

GATE DELAY PACKAGE 8100-GDS PRIOR TO SERIAL #0791233



GATE DELAY INSTRUCTIONS & ADJUSTMENTS

The purpose of the gate delay system is to hold the rear swinging gate in the open position until the apron has cleaned all of the forage out of the box. By adjusting the flow control the speed in which the gate closes can be regulated. When the flow control is properly adjusted the gate will slowly close as the remainder of the forage is being unloaded. Once the box is completely unloaded the gate delay will reach a trip position with the trip arm moving the lower cylinder shaft out of the horizontal slot and allow the gate to trip closed and latch. For proper operation adjust as follows. When the gate is completely closed (tight to rear upright) the cable and eyebolt assembly should be adjusted so the cable has no slack. Cable should be tight but not over tightened. If cable and eyebolt is over tightened the lower cylinder will trip out of the L-shaped slot on the lower bracket prematurely and the gate will try to close before the cylinder is fully extended. If the cable and eyebolt is too loose the lower cylinder will not trip out of the L-shaped slot and the cylinder will reach its maximum stroke and the trip arm will still not be in the tripped position allowing the gate to close. The gate will be held open by the top cylinder bracket and the bracket may become damaged over time. The eyebolt and cable will need to be adjusted periodically to maintain proper operation.

KEY	PART NO.	DESCRIPTION
1	55-0095	1/8" to 3/8" NPT Reducer
2	30-0015	1/4x90 Degree Elbow
3	25-8095	Oil Reservoir Assembly
4	55-0097	3/8 to 3/8" Hydraulic Nipple
5	55-0094	Flow Control Valve
6	55-0096	3/8 NPT x 90 Degree Male Pipe Elbow
7	25-8096	Gate Release Trip Arm Assembly
8	25-8092-1	Gate Regulator Top Shaft Assy.
9	25-8090-1	Top Cylinder Bracket Assy.
10	55-0093	Hydraulic Cylinder

KEY	PART NO.	DESCRIPTION
11	952-0007-1	7-1/4" Nylon Tie Strap
12	25-8098	Cable/Eyebolt Assy.
13	25-8097-1	Lower Sleeve Spacer
14	25-8093-1	Lower Shaft Plate Assy.
15	25-8095-6	Top Copper Line Assy.
16	25-8101	Ground Control Rod Assy. W/Grip
17	51-0007	Handle Grip
18	933-3804	5/16 x 4" Eyebolt
19	825-25-1Z	1/4x1" Self Tapping Screw

9100 TRAILER TIRE WHEEL TORQUE

- Clean adjoining surfaces
- Start nuts to bring wheel and brake drum flush to hub mounting surface.
- Avoid brake drum and/or wheel binding on hub.
- Install remaining wheel nuts. Torque to 50 ft./lbs., and then retorque. Reference Wheel Torque Table.
- Re-torque wheel nuts after 50-100 miles.
- Check wheel nut torque every 10,000 miles and re-torque as necessary.

WHEEL TORQUE TABLE

BOLT/STUD SIZE	SOCKET SIZE	PRESS FORMED WHEEL CENTER	BOLT TYPE	HEAVY DUTY WHEEL CENTER
1/2	3/4	80 ft lbs	Lug Bolt	85 ft lbs
9/16	7/8	80 ft lbs	Lug Bolt	120 ft lbs
5/8	15/16 1-1/16	100 ft lbs	Bevel or Flange Nut	160 ft lbs
3/4	1-1/8 / 1-1/2	NA	Flange Nut	378 ft lbs
22MM	32MM	NA	Flange Nut	450-500 ft lbs

TIRE INFLATION

TIRE SIZE	PLY	PSI
11L-15	8	36
12.5L-15	8	36
12.5L-15	12	52
14L-16	12	44
16.5L-16	10	36
19LX16.1	10	32
21.5L-16.1	18	44
11R/22.5	used truck	75
425/65X22.5	used truck	75
28L-26	16	28
550/45X22.5	16	52
600/50X22.5	16	52
600/50X22.5	18	87
700/40X22.5	16	52
700/40X22.5	18	87

“SPECIFICATIONS”

	TRUCK MOUNT MODELS					TRAILER MODELS		
	9122	9124	9126	9128	9130	9130T	9136T	9140T
DIMENSIONS	22'	24'-8"	26'	28'-8"	30'	30'	36'-8"	40'
Inside Width	98"	98"	98"	98"	98"	98"	98"	98"
Inside Height w/out ext.	72.5"	72.5"	72.5"	72.5"	72.5"	72.5"	72.5"	72.5"
Inside Height w/ext.	86.5"	86.5"	86.5"	86.5"	86.5"	86.5"	86.5"	86.5"
Overall Length	22'-9"	25'-5"	26'-9"	29'-5"	30'-9"	30'-9"	37'-5"	40'-9"
Overall Width	102"	102"	102"	102"	102"	102"	102"	102"
Overall Height No ext. (Top of Gate)	104"	104"	104"	104"	104"	145.5"	145.5"	145.5"
Overall Height w/14" ext. (Top of Gate)	115.5"	115.5"	115.5"	115.5"	115.5"	159.5"	159.5"	159.5"
Overall Side Height-No ext./ext.	90/104"	90/104"	90/104"	90/104"	90/104"	129.5/14 3.5"	129.5/14 3.5"	129.5/14 3.5"
Stringer Width (Truck Mount)	33.5"	33.5"	33.5"	33.5"	33.5"	NA	NA	NA
Capacity (Struck Level) cu. Ft. w/out ext.	1075	1200	1260	1390	1460	1460	1780	1920
Capacity (Struck Level) cu. Ft. w/14" ext.	1280	1400	1495	1640	1720	1720	2105	2305
SPECIFICATIONS								
Maximum Net Load	25 ton	25 ton	25 ton	25 ton	25 ton	25 ton	30 ton	30 ton
Final Drive Roller Chains	#120x2	#120x2	#120x2	#120x2	#120x2	#120x2	#120x2	#120x2
Apron Chains (Pintel)	667XH	667XH	667XH	667XH	667XH	667XH	667XH	667XH
Rear Drive Shaft-Heavy Duty	2-1/2" Hvy Tube	2-1/2" Hvy Tube	2-1/2" Hvy Tube	2-1/2" Hvy Tube	2-1/2" Hvy Tube	2-1/2" Hvy Tube	2-1/2" Hvy Tube	2-1/2" Hvy Tube
Power Source	Hyd	Hyd	Hyd	Hyd	Hyd	Hyd	Hyd	Hyd
Upright Spacing	16"	16"	16"	16"	16"	16"	16"	16"
Upright Cross Member Construction	2x2 Tubing	2x2 Tubing	2x2 Tubing	2x2 Tubing	2x2 Tubing	2x2 Tubing	2x2 Tubing	2x2 Tubing
Enclosed Side Frame/ Cross Member Union	STD	STD	STD	STD	STD	STD	STD	STD
Unloading Time (Dependant of Hyd. System)	60 Sec.-Hyd	60 Sec.-Hyd	60 Sec.-Hyd	60 Sec.-Hyd	75 Sec.-Hyd	75 Sec.-Hyd	90 Sec.-Hyd	100 Sec.-Hyd
STANDARD FEATURES								
Stainless Steel Sides-Front & Back	STD	STD	STD	STD	STD	STD	STD	STD

“SPECIFICATIONS”

	TRUCK MOUNT MODELS					TRAILER MODELS		
	9122	9124	9126	9128	9130	9130T	9136T	9140T
Solid Poly Floor-High Molecular	STD	STD	STD	STD	STD	STD	STD	STD
Rear Gate Delay System	STD	STD	STD	STD	STD	STD	STD	STD
Automatic Rear Door Unlatch/Latch	STD	STD	STD	STD	STD	STD	STD	STD
Automatic Roller Chain Tighteners	STD	STD	STD	STD	STD	STD	STD	STD
Hydraulic Drive	STD	STD	STD	STD	STD	STD	STD	STD
Semi Auto Roller Chain Oiler	STD	STD	STD	STD	STD	STD	STD	STD
Front Gate Viewing Window	STD	STD	STD	STD	STD	STD	STD	STD
Rear Lights, Marker Lights & D.O.T Tape	STD	STD	STD	STD	STD	STD	STD	STD
Personalized Farm Name on Sides	STD	STD	STD	STD	STD	STD	STD	STD
OPTIONS								
14" Removable Side Extensions	Opt.	Opt.	Opt.	Opt.	Opt.	Opt.	Opt.	Opt.
Fold Down Front Extension (No Tarp)	Std.	Std.	Std.	Std.	Std.	Std.	Std.	Std.
Double Center Opening Doors	Opt.	Opt.	Opt.	Opt.	Opt.	Opt.	Opt.	Opt.
Grain Kit (Top Pivot Door Only)	Opt.	Opt.	Opt.	Opt.	Opt.	Opt.	Opt.	Opt.
Truck Mount Kit W/Steel Fenders	Opt.	Opt.	Opt.	Opt.	Opt.	Opt.	Opt.	Opt.
Factory Install of Truck Mount Kit	Opt.	Opt.	Opt.	Opt.	Opt.	Opt.	Opt.	Opt.
Wagon/Trailer Mount Kit	Opt.	Opt.	Opt.	Opt.	Opt.	NA	NA	NA
TARP SYSTEMS								
Front to Back Scissor Tarp (Electric)	Opt.	Opt.	Opt.	Opt.	Opt.	Opt.	Opt.	Opt.
Side to Side Roll Tarp (Electric)	Opt.	Opt.	Opt.	Opt.	Opt.	Opt.	Opt.	Opt.

This Page Intentionally Blank.

This Page Intentionally Blank.

MEMBER



Manufactured by:
Meyer Mfg. Corp.

County Hwy. A West
P.O. Box 405
Dorchester, Wisconsin 54425-0405
Phone 715-654-5132 • FAX 715-654-5513
1-800-325-9103



www.meyermfg.com

E-mail: sales@meyermfg.com

Farm Equipment Buyers Trust the Name Meyer!

