

OPERATORS AND PARTS MANUAL NO. 04-03-X-SERIES  
FOR  
X - SERIES WAGONS

# MEYER

## WAGON GEAR



### MODELS

Single Axle	Tandem Axle
X0804	X1206
X0804-W	X1506
X1004	X1906
X1304	X2206
X1604	
X1704	
X2004	



DO NOT OPERATE EQUIPMENT UNTIL THIS MANUAL HAS BEEN READ AND UNDERSTOOD.

MEMBER



FEMA

MANUFACTURED BY  
**Meyer Mfg. Corp.**



Over  
**65 years**  
of service  
to our customers

County Hwy. A West  
P.O. Box 405  
Dorchester, Wisconsin 54425-0405  
Phone 715-654-5132 • FAX 715-654-5513  
1-800-325-9103  
[www.meyermfg.com](http://www.meyermfg.com)  
E-mail: [sales@meyermfg.com](mailto:sales@meyermfg.com)

# TABLE OF CONTENTS

WARRANTY . . . . .	3
INTRODUCTION . . . . .	4
How to Read Your Serial Number . . . . .	4
SAFETY . . . . .	5
SAFETY PRECAUTIONS . . . . .	6
TRANSPORTING . . . . .	7
Use Safety Chain . . . . .	7
Attaching Wagon/Trailer With Brakes To Tow Vehicle. . . . .	8
Farm implement tires. . . . .	8
Safety precautions. . . . .	8
MAINTENANCE INSTRUCTIONS . . . . .	9
Lubrication . . . . .	9
Pack Wheel Bearings. . . . .	10
Adjust Wheel Bearing Preload . . . . .	10
Farm Implement Tires . . . . .	10
Service & Maintenance Tips . . . . .	10
Inspection. . . . .	10
Adjust Front Wheel Toe In . . . . .	12
Tire inflation. . . . .	13
Meyer Equipment Wheel Torque . . . . .	13
Brake Maintenance . . . . .	14
Bleeding Of Brakes. . . . .	14
REPAIR PARTS . . . . .	16
Models X0804, X0804-W & X1004 . . . . .	16
Models X0804, X0804-W & X1004 . . . . .	18
Model X1206 . . . . .	20
Models X1304 & X1506. . . . .	24
Models X1604 & X1906. . . . .	28
Models X1704 & X2206. . . . .	32
Model X2004 (1 of 2) . . . . .	36
Hub For Models X0804, X0804-W, X1004, X1206, X1304, X1506. . . . .	40
Hub For Models X1604, X1906, X1704, X2206 . . . . .	41
Hub for Model X2004 . . . . .	42
Tandem For Models X1206 & X1506. . . . .	44
Tandem For Models X1906 & X2206. . . . .	45
X-series optional brake package . . . . .	46
Steel Stringer Tie Down Kit. . . . .	52

# WARRANTY

Meyer Mfg. Corp. warrants new Meyer's running gears to be free from defects in material and workmanship under normal recommended use and service, as stated in the operator's manual, as follows:

1. Meyer Mfg. will repair or replace F.O.B. Dorchester, WI, as Meyer Mfg. elects, any part of a new Meyer's running gear which is defective in material or workmanship.
  - a. Without charge for either parts or labor during the first year following delivery to the original retail customer, and;
  - b. Without charge for parts (not labor) during the second year following delivery to the original retail customer.
2. Warranty forms must be completed and returned to Meyer Mfg. Corp. for this warranty to be valid.
3. This warranty is the sole and exclusive warranty which is applicable in connection with manufacture and sale of this product and Meyer Mfg. Corp. responsibility is limited accordingly.

Tires and optional scales fall under the original manufacturer's warranty.

# INTRODUCTION

Congratulations on your purchase of a new Meyer farm equipment product. Undoubtedly you have given much consideration to your purchase and we're proud that you have selected Meyer. Pride in craftsmanship, engineering and customer service have made Meyer products the finest in the farm equipment industry today.

There is no substitute for quality. That is why thousands of people like you have purchased Meyer farm equipment. They felt it was the best equipment to serve their farming needs, now and in years to come. We ask that you follow our policy of "safety first," and we strongly suggest that you read through the owner's manual before operating your Meyer farm equipment.

Meyer Manufacturing Corporation wants to thank you for not compromising quality. We are determined to offer excellence in customer service as well as provide you with the very best value for your dollar.

**REMEMBER:**

**FARM EQUIPMENT BUYERS  
TRUST THE NAME MEYER!**

Sincerely,

All Employees of  
MEYER MANUFACTURING CORPORATION

Meyer Mfg. Corp. reserves the right to make improvements in design, or changes in specifications at any time, without incurring any obligation to owners of units previously sold.

This supersedes all previous published instructions.

**IMPORTANT:**

Complete Meyer Mfg. Corp. invoice and promptly forward a copy to Meyer Mfg. Corp. to validate the manufacturer's warranty. The product model and serial number are recorded on this certificate and below for proper identification of your Meyer Farm Wagon.

**Model No.** \_\_\_\_\_

**Serial No.** \_\_\_\_\_

**Date of Purchase** \_\_\_\_\_

At the back of this manual is the repair parts section. All replacement parts are to be obtained from or ordered through your Meyer dealership. When ordering repair parts, refer to the parts section and give complete information including quantity, correct part number, detailed description and even Model No. and Serial No. of the Meyer Farm Wagon which needs repair parts.

## HOW TO READ YOUR SERIAL NUMBER

Your serial number is stamped on the rear right hand spindle gusset - single axle, on the rear right hand o-beam support plate - tandem axle.

Example: 1312226

Model / Model Year / Sequence of Build

↓            ↓            ↓  
**13      12            226**

**NOTE:** All references to right hand (RH), left hand (LH), front and rear apply to the product as viewed from the rear of the wagon.

# ! SAFETY

A brief definition of signal words that are used in this manual is as follows.

**! DANGER** indicates an imminently hazardous situation which, if not avoided, WILL result in death or serious injury.

**! WARNING** indicates a potentially hazardous situation which, if not avoided, COULD result in death or serious injury, and includes hazards that are exposed when guards are removed.

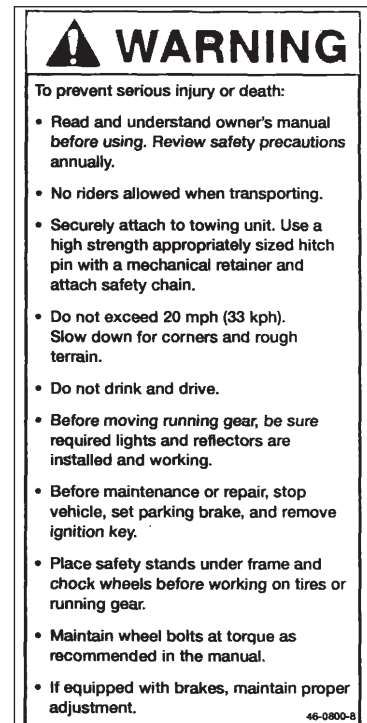
**! CAUTION** indicates a potentially hazardous situation which, if not avoided, MAY result in minor or moderate injury. It is also used to alert against unsafe practices.



Part No. 46-0800-6



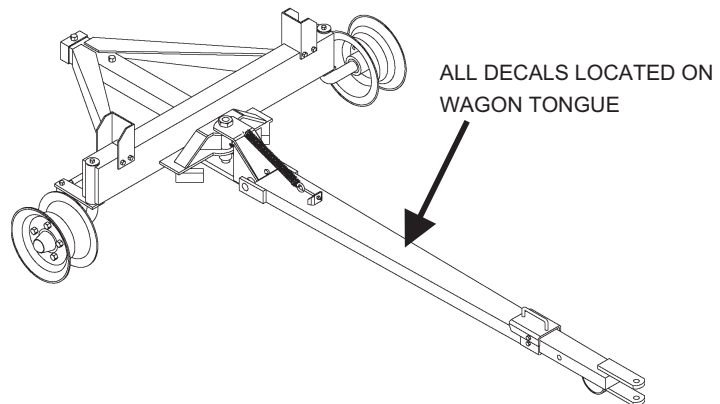
Part No. 46-0800-9



Part No. 46-0800-8





Part No. 46-0800-7



**! CAUTION** READ ALL DECALS ON THE WAGON AND IN THIS MANUAL. KEEP THESE DECALS CLEAN AND REPLACE ANY LOST OR DAMAGED DECALS. BECOME FAMILIAR WITH ALL TRACTOR CONTROLS.

# SAFETY PRECAUTIONS

 This symbol is used to call your attention to instructions concerning your personal safety. Be sure to observe and follow these instructions. Take time to be careful!

** WARNING** BEFORE YOU ATTEMPT TO OPERATE THIS EQUIPMENT, READ AND STUDY THE FOLLOWING SAFETY INFORMATION. IN ADDITION, MAKE SURE THAT EVERY INDIVIDUAL WHO OPERATES OR WORKS WITH THE EQUIPMENT, WHETHER FAMILY MEMBER OR EMPLOYEE, IS FAMILIAR WITH THESE SAFETY PRECAUTIONS.

Require anyone who will operate this machine to read and understand this manual. Give necessary instructions.

DO NOT operate, service, inspect or otherwise handle this equipment until you have read this Owner's Manual and have been properly trained in its intended usage.

Do not allow minors (children) or inexperienced persons to operate this machine.

Do not allow riders on this machine at any time.

Inspect when first delivered and regularly thereafter; that all connections and bolts are tight and secure before operating.

Do not operate until all shields, covers and guards are in place.

Make certain area is clear of people, tools, and other objects before moving wagon.

Keep hands, feet and clothing away from moving parts. Loose or floppy clothing should not be worn by the operator.

Do not step on the wagon at any time.

Keep away from power lines. Contact with electric lines may result in serious injury or death by electrocution!

Use only properly rated running gear and tires.

Do not tow at speeds in excess of 20 MPH when transporting.

You must observe all applicable traffic laws when transporting on public roadways (where legal to do so). Check local laws for all highway lighting and marking requirements.

Always install a SMV emblem for transporting on roadways and keep this emblem clean and bright.

**MEYER MFG. CORP. PROVIDES GUARDS FOR EXPOSED MOVING PARTS FOR THE OPERATOR'S PROTECTION; HOWEVER, SOME AREAS CANNOT BE GUARDED OR SHIELDED IN ORDER TO ASSURE PROPER OPERATION. THE OPERATOR'S MANUAL AND DECALS ON THE MACHINE ITSELF WARN YOU OF DANGERS AND MUST BE READ AND OBSERVED CLOSELY!**

**Study the Above Safety Rules**  
**FAILURE TO HEED MAY RESULT IN SERIOUS PERSONAL INJURY**

# TRANSPORTING

**⚠ DANGER** DO NOT OPERATE WHILE UNDER THE INFLUENCE OF ALCOHOL OR DRUGS.

Be certain your forage box is properly mounted to the running gear. Consult your dealer if you have any questions about the tie down kit from the manufacturer and illustrated in the parts section of this manual.

**⚠ WARNING** INSPECT REGULARLY THAT ALL CONNECTIONS AND BOLTS ARE TIGHT AND SECURE BEFORE OPERATING. FAILURE TO HEED MAY RESULT IN SERIOUS PERSONAL INJURY OR DEATH.

**⚠ WARNING** DO NOT TOW AT SPEEDS GREATER THAN 20 MPH. FAILURE TO HEED MAY RESULT IN SERIOUS PERSONAL INJURY OR DEATH.

Operating speed is dictated by the terrain over which you are traveling. Always use caution. Avoid traveling on slopes or hills that are unsafe.

Always disconnect the PTO drive shaft from the tractor and return it to its storage bracket on the unloading unit for transporting. Failure to do this may result in equipment damage.

Your running gear probably has a telescoping tongue for convenience to hitch up. Always back up and lock this tongue in the operating position after hitching.

**⚠ WARNING** OBSERVE ALL APPLICABLE TRAFFIC LAWS WHEN TRANSPORTING ON PUBLIC ROADWAYS. CHECK LOCAL LAWS FOR ALL HIGHWAY LIGHTING AND MARKING REQUIREMENTS.

**⚠ WARNING** INSTALL A SMV EMBLEM ON REAR OF FORAGE BOX FOR TRANSPORTING ON ROADWAYS AND KEEP THIS EMBLEM CLEAN AND BRIGHT. FAILURE TO HEED MAY RESULT IN SERIOUS PERSONAL INJURY OR DEATH.

If you will travel on public roads and it is legal to do so, you must know all rules governing such operation. This will include lighting and brake requirements in addition to traffic rules. You may also be required to install a safety chain device on the running gear.

Check for traffic constantly. Be sure that no one is attempting to pass and that all traffic is sufficiently clear before making any turns.

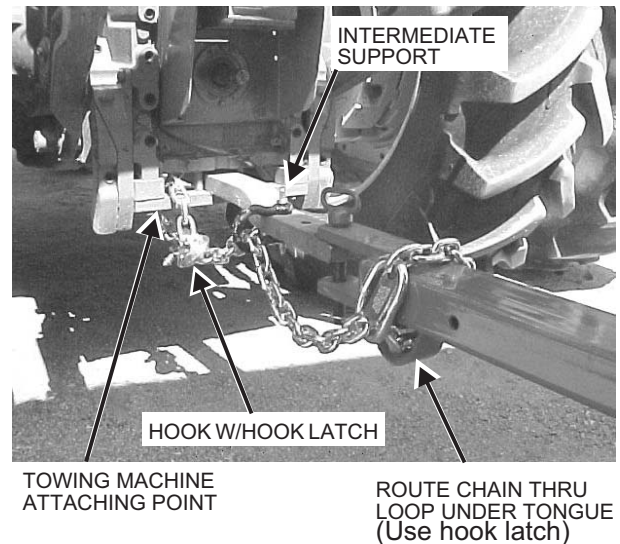
**⚠ WARNING** ALWAYS USE A SAFETY HITCH PIN WITH A LOCKING DEVICE.

## USE SAFETY CHAIN

**⚠ CAUTION** A SAFETY CHAIN MUST BE INSTALLED TO RETAIN THE CONNECTION BETWEEN TRACTOR (OR OTHER TOWING VEHICLE) AND WAGON WHENEVER TRAVELING ON PUBLIC ROADS IN CASE THE HITCH CONNECTION WOULD SEPARATE. A SUGGESTED ATTACHMENT IS ILLUSTRATED ON FIGURE 1.

The chain must be strong enough to hold the weight of the loaded wagon. If using a grab hook at the end(s) of the chain to secure the chain to itself, a hook latch must be installed.

The length of the safety chain is not to be any longer than necessary to turn without interference. If any chain links or attachment hardware are broken or stretched, repair before using. Store chain so it does not corrode or become damaged. Do not use this chain for other implements because the strength and length of chain may not be adequate. Identify this chain for use on this particular wagon.



**Figure 1. Safety Chain Installation**

**⚠ CAUTION** IF YOUR MEYER WAGON IS EQUIPPED WITH A POLE LIFT ASSIST SPRING (EXTENSION SPRING) PLEASE NOTE: THE EXTENSION SPRING IS TO BE ADJUSTED TO ASSIST IN LIFTING THE POLE FOR ATTACHING TO THE TOW VEHICLE. WHEN DISCONNECTED FROM THE TOW VEHICLE THE POLE SHOULD REST ON THE GROUND. EXCESSIVE LIFT PRESSURE ON THE POLE COULD CAUSE THE POLE TO BECOME DISCONNECTED FROM THE TOWING VEHICLE. ALWAYS USE A SAFETY PIN WITH A LOCKING DEVICE AND SAFETY CHAINS WHEN ATTACHING TO THE TOWING VEHICLE. ALSO EXCESS WEAR ON HITCH PIN, SAFETY PIN, HITCH PLATES AND DRAW BAR COULD RESULT. FAILURE TO HEED PROPER ADJUSTMENT MAY LEAD TO POSSIBLE INJURY OF DEATH.

**⚠ WARNING** ALWAYS TRAVEL UPHILL OR DOWNHILL ON INCLINES AND SLOPES TO PREVENT ROLLOVER

**⚠ WARNING** BE SURE YOU HAVE ADEQUATE CLEARANCE FOR YOUR LOADED WAGON TO AVOID CONTACT WHEN TRAVELING UNDER ELECTRICAL POWER LINES. CONTACT CAN RESULT IN SEVERE ELECTRICAL SHOCK OR ELECTROCUTION.

## ATTACHING WAGON/TRAILER WITH BRAKES TO TOW VEHICLE

PLEASE NOTE THAT THE SURGE BRAKES ARE TO BE USED FOR ASSISTING IN STOPPING ONLY AND ARE NOT TO BE RELIED ON AS THE ONLY MEANS FOR STOPPING THE TOWED PIECE OF EQUIPMENT. USE CAUTION AS SERIOUS INJURY OR DEATH COULD RESULT.

Attach the towing vehicle to the trailer/wagon using a proper sized hitch pin to handle the load being towed. Check that safety pins are inserted properly to prevent accidental uncoupling. Do not pull trailer/wagon if the hitch plates are damaged. Connect the breakaway chain from the actuator to the tow vehicle fastening to the bumper or hitch assembly. Allow extra slack for turning corners but not too much slack for the chain to be dragging on the pavement. Maintain as straight a connection to the tow vehicle as

possible. The safety breakaway chain will only function after the hitch pin and safety chains have failed.

**NOTE:** The safety breakaway chain is not to act as a parking brake. Wagons/trailers with free backing brakes will not hold in reverse direction. To release the breakaway lever pry up on the spring clip to release lever

## FARM IMPLEMENT TIRES

### SAFETY PRECAUTIONS

#### Do's

- DO remove the valve core and deflate the tire before any work is performed.
- DO use the proper and approved tools to demount and mount the tire.
- DO inspect all rim/wheel parts for wear, damage, cracks, rust or mismatched components. Destroy damaged or unserviceable parts.
- DO inspect the tube and tire for cord or side damage, cuts or wear. Unrepairable damaged items must be discarded.
- DO check for mismatched components or tire and wheel sizes.
- DO lubricate tire with a non-flammable tire lubricant approved for that purpose.
- DO place tire and wheel in inflation cage or restraining device before inflating beyond 5 PSI.
- DO use an extension hose with a PSI gauge and clip on chuck when inflating the tire so you can stand to one side.

#### Don'ts

- DON'T work on a tire/wheel assembly before removing the valve core and completely deflating.
- DON'T re-inflate a tire that has been run flat or in an under inflated condition before removing and inspection.
- DON'T reuse damaged, defective worn or mismatched parts.
- DON'T rework, weld, heat or braze any rim /wheel parts for any reason.
- DON'T inflate any tire beyond 40 PSI to seat the beads. If beads are not seated at 40 PSI. STOP! Deflate and determine problem.
- DON'T hammer, strike or pry on a rim/wheel assembly that contains any inflation pressure.
- DON'T inflate a tire without using an inflation cage or restraining device.
- DON'T inflate beyond the maximum PSI specified for the tire or rim.

Study the Above Safety Rules  
FAILURE TO HEED MAY RESULT IN SERIOUS PERSONAL INJURY OR DEATH.

# MAINTENANCE INSTRUCTIONS

**⚠ WARNING** BEFORE SERVICING OR INSPECTING THIS WAGON, HAVE IT HITCHED TO A TRACTOR WITH ENGINE OFF, KEYS REMOVED AND PARKING BRAKE SET OR CHOCK ALL FOUR WHEELS OF WAGON.

**⚠ WARNING** FAILURE TO COMPLY WITH OPERATING AND MAINTENANCE INSTRUCTIONS MAY CAUSE SERIOUS PERSONAL INJURY.

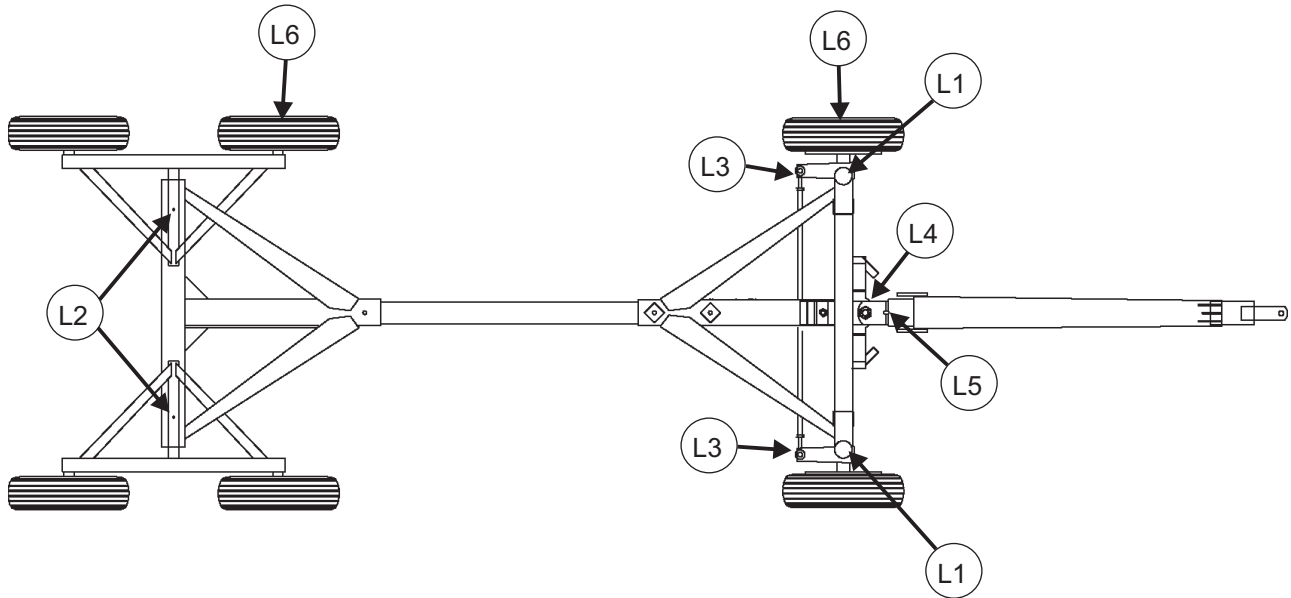


Figure 2. Lubrication Diagram

## LUBRICATION

Figure 2.

FREQUENCY	ITEM	LOCATION	PROCEDURE
Every 2 Work Days Or 20 Loads	Front Spindle	L1	Jack up empty wagon off ground and support on adequate jack stands to relieve pressure and grease until it purges.
	Tandem Wings	L2	
	Tie Rod Ends	L3	
	Vertical Hitch Shaft	L4	
	Horizontal Hitch Shaft	L5	
Annually	Wheel Bearings	L6	X0804/X0804W/X1004/X1206 clean and pack hub bearings. Use quality grade of wheel bearing grease. See page 10. X1304/X1506/X1604/X1906/X1704/X2206/X2004. Grease hub through zerk in hub monthly. Hub from factory has bearings packed but hub is not fully loaded with grease. Be careful not to over grease and force seal out of the back side of the hub.

**⚠ WARNING** DO NOT TOW AT SPEEDS IN EXCESS OF 20 MPH.

## INSPECTION

FREQUENCY	ITEM	PROCEDURE
Daily	Wheel Hub Lug Bolts	Check for proper torque as listed on page 13.
	Wheel Hub Bearings	Check bearing play and adjust bearing preload if required.
	Tire Inflation	Check inflation as listed on page 13.
Every 30 Days	All Fasteners And Connections	Check complete wagon for loose and fatigued fasteners. Check all pivots for play. Tighten or replace as required.
Annually	Toe In Adjustment	Check toe in as instructed on page 12. Adjust if necessary. If wagon does not trail properly at moderate speed, adjust more often.
	Tires	Check tires for wear and replace when necessary. If there are unusual wear patterns, check toe in adjustment.
	All Pivots And Bushings	Check for wear and repair as required.

**IMPORTANT: Warranty May Be Voided.** If the wagon is operated with improper toe-in of the front tires, Meyer will not warranty the wagon. Each tire should be toed-in 1/8" or both tires a total of 1/4'. When checking the toe-in, the measurement at the rear of the front tires should be 1/4" more than the distance between at the front. See page 12.

### PACK WHEEL BEARINGS

1. Chock all four wheels or hitch to tractor with engine off, key removed and parking brake set. Jack empty wagon off ground and support with adequate jack stands.
2. Disassemble hub and remove all old grease. Clean bearings in non flammable solvent and dry.
3. Reassemble hub and pack with quality wheel bearing grease.
4. Adjust wheel bearing preload as described in the following instructions

### ADJUST WHEEL BEARING PRELOAD

1. Chock all four wheels or hitch to tractor with engine off, key removed and parking brake set. Jack empty wagon off ground and support with adequate jack stands.
2. Push back and forth on each wheel assembly. If play is detected, bearings need adjusting.
3. If adjusting bearings, it is suggested the bearings be repacked as described previously.
4. Remove hub cap and remove cotter pin from spindle nut.

5. Tighten spindle nut to remove all play. It should be snug and slight drag can be felt while rotating the wheel
6. If the cotter pin hole in the spindle does not line up with the notch in spindle nut, back off the spindle nut only enough to line up. Reinstall cotter pin. If cotter pin is damaged, replace it.
7. Replace hub cap and lower wheel to the ground.

### FARM IMPLEMENT TIRES

#### SERVICE & MAINTENANCE TIPS

Agricultural tires are designed to carry a specified load at a specified inflation pressure when mounted on a specified width rim. When these conditions are met, the deflection of the tire carcass is in the optimum range and maximum tire performance can be expected. If this combination of design factors is altered for any reason, tire performance will be reduced.

#### CHECKING INFLATION

Inflation pressures should be checked at least every week. Recommended inflation Pressures based on total load on tires should be used. For accurate inflation use a special low-pressure gauge with one-pound gradations. Gauges should be checked occasionally for accuracy. Always use sealing valve caps to prevent loss of air.

#### TIRE OVERLOAD OR UNDER INFLATION

Tire overload or under inflation have the same effect of over-deflecting the tire. Under such conditions the tread on the tire will wear rapidly and unevenly, particularly in the shoulder area. Radial cracking in the upper sidewall area will be a problem. With under

inflated drive tires in high torque applications sidewall buckles will develop leading to carcass breaks in the sidewall. While an under inflated drive tire may pull better in some soil conditions, this is not generally true and not worth the high risk of tire damage that such an operation invites.

#### **OVER INFLATION**

Over inflation results in an under-deflected tire carcass. The tread is more rounded, concentrates tread wear at the centerline area. Traction is reduced in high torque service because ground contact of the tread shoulder area is reduced and the harder carcass—with reduced flexing characteristics—does not work as efficiently. The tightly stretched over-inflated carcass is more subject to weather checking and impact break damage.

#### **PRESSURE ADJUSTMENTS REQUIRED-SLOW SPEED OPERATION**

Higher tire loads are approved for intermittent service operations at reduced speed. Under such conditions inflation pressure must be increased to reduce tire deflection and assure full tire service life. See Page 13 for proper inflation.

#### **USE OF PROPER WIDTH RIMS**

Mention has been made of the importance of mounting tires on rims of the specified width. When this recommendation is not followed the following conditions can result:

#### **USE OF A RIM WIDER THAN RECOMMENDED**

Use of a wider rim results in flattening of the tread face. This feature may improve traction in some looser soil conditions. In hard soils, however, the flatter tread penetrates less effectively and tractive effort is reduced. Additional stresses concentrated in the shoulder area tend to increase the rate of shoulder treadwear. By spacing the tire beads farther apart the sidewalls are forced to flex in an area lower than normal and this can result in circumferential carcass breaks and/or separation.

#### **USE OF A RIM NARROWER THAN RECOMMENDED**

This condition brings potential mounting problems because the rim shield or flange cover molded into most drive tire designs tends to interfere with the seating of the tire beads on a narrow rim. Once mounted on a narrow rim, the tire shield applies undue pressure on the rim flange, with possible tire sidewall separation or premature rim failure at the heel radius. On a narrow rim the tread of the tire is rounded. As with the over-inflated tire treadwear will be concentrated in the center area of the tread and traction in the field will be reduced.

#### **ROADING OF FARM TIRES**

Tractor tires operate most of the time in field conditions where the lugs can penetrate the soil, and where all portions of the tread make contact with the ground. In operating on hard roads with low inflation pressure there is an undesirable distortion of the tire during which the tread bars squirm excessively while going under and coming out from under the load. On highly abrasive or hard surfaces, this action wipes off the rubber of the tread bars or lugs and wears them down prematurely and irregularly.

If tires are to operate for any length of time on roads or other hard surfaces and the draft load is not great, it is advisable to increase the pressure in the tire to the maximum recommendation in order to reduce the movement of the tread bars that causes excessive wiping action.

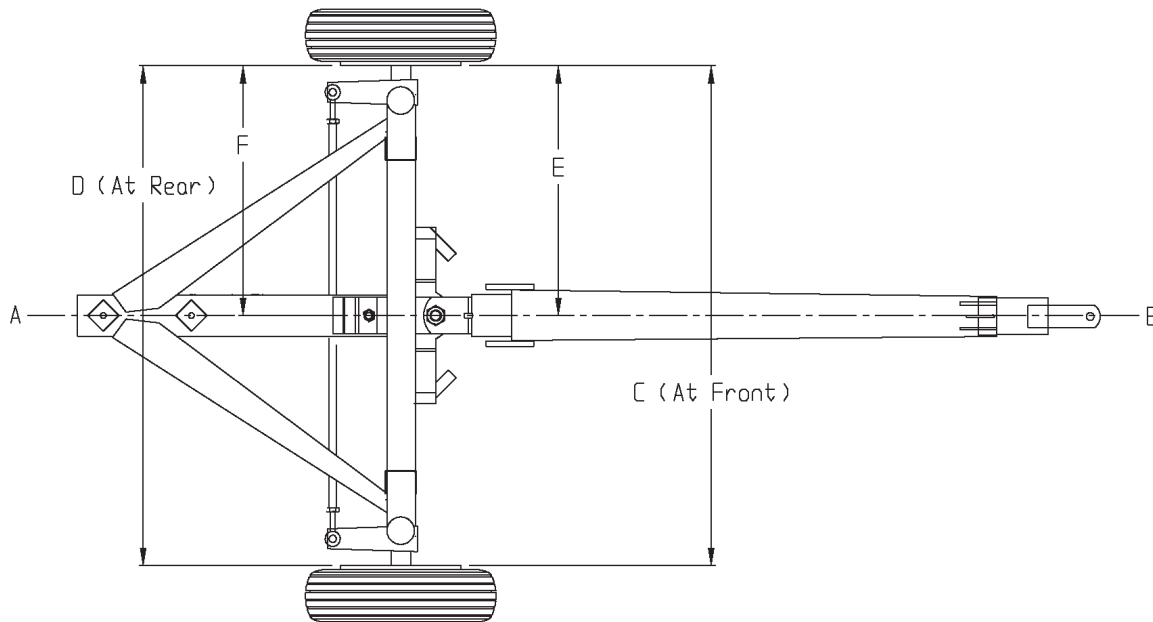
Farm tractor and implement tires are designed for low-speed operations not exceeding 25 miles per hour. If tractors or implements are towed at high speeds on the highway high temperatures may develop under the tread bars and weaken the rubber material and cord fabric. There may be no visible evidence of damage at the time. Later a premature failure occurs which experience shows was started by the overheated condition that developed when the unit was towed at a high speed.

#### **CARE AND STORAGE OF TRACTOR AND IMPLEMENT TIRES**

All tires should be stored indoors in a cool, dark, dry area free from drafts. Both heat and light are sources of oxidation on the tire surfaces—a result of which is crazing and weather checking. Tires should never be stored on oily floors or otherwise in contact with solvents, oil or grease. Further, tires should not be stored in the same area with volatile solvents. Such solvents are readily absorbed by rubber and will damage and weaken it.

Tires should be stored away from electric motors, generators, arc welders, etc.. since these are active sources of ozone. Ozone attacks rubber—to cause crazing and weather checking.

Unmounted tires should be stored vertically on tread. If stored for an extended period, tires should be rotated periodically to reduce stress concentrations in the area of ground contact. Tires should not be stored flat and “stove piped” as they will become squashed and distorted, making mounting on the rim difficult—particularly for tubeless tires.



**Figure 3. Adjust Toe In**

Inflated tires mounted on rims should be stored under conditions noted above, with inflation pressure reduced to 10 PSI.

on the rear side, dimension F. Dimension E should be 1/8" to 3/16" less than dimension F. When dimensions are correct, tighten the jam nut on the rod eye.

5. Make this same adjustment at the other wheel.

## ADJUST FRONT WHEEL TOE IN

1. To check toe in, mark the center of the front frame. With a string drawn tightly across the center of a reach bolt and the center mark on the front frame (line A-B), straighten the tongue so the string also crosses over the center of the hitch pin hole. See figure 3.
2. Accurately measure the distance between the rim bead at the horizontal center and at the front, dimension C. Likewise measure on the rear side, dimension D. Dimension C should be 1/4" to 3/8" less than dimension D. If it is not, then continue with the following adjustments.
3. Loosen the jam nuts on the tie rod ends, both sides. Then unbolt the tie rod ends from the spindle arm.

**NOTE:** On units with two tie rods, adjustment can be made by loosening the jam nuts on the ball joints at each end and turning the tie rod in the direction required.

4. On one wheel, turn the rod eye outward to increase toe in or inward to decrease. After making an adjustment, reconnect the rod eye to the spindle arm. Measure from rim bead to wagon center line at the front, dimension E. Likewise measure

## MEYER EQUIPMENT WHEEL TORQUE

<b>BOLT/STUD SIZE</b>	<b>SOCKET SIZE</b>	<b>PRESS FORMED WHEEL CENTER</b>	<b>BOLT TYPE</b>	<b>HEAVY DUTY WHEEL CENTER</b>
1/2	3/4	80 ft lbs	Lug Bolt	85 ft lbs
9/16	7/8	80 ft lbs	Lug Bolt	120 ft lbs
5/8	15/16 1-1/16	100 ft lbs	Bevel or Flange Nut	160 ft lbs
3/4	1-1/8 / 1-1/2	NA	Flange Nut	378 ft lbs
22MM	32MM	NA	Flange Nut	450-500 ft lbs

## TIRE INFLATION

<b>TIRE SIZE</b>	<b>PLY</b>	<b>PSI</b>
11L-15	8	36
12.5L-15	8	36
12.5L-15	12	52
14L-16	12	44
16.5L-16	10	36
19LX16.1	10	32
21.5L-16.1	18	44
11R/22.5	used truck	75
425/65X22.5	used truck	75
28L-26	16	28
550/45X22.5	16	52
600/50X22.5	16	52
600/50X22.5	18	87
700/40X22.5	16	52
700/40X22.5	18	87

## BRAKE MAINTENANCE

Before towing, check that the brake fluid reservoir is maintained to at least half full. If not refill with DOT 3 brake fluid. Check complete system for any leaks and repair as needed. Examine actuator for bent parts or excessive wear. Straighten or replace any worn parts as needed. Check to see that all mounting bolts and fasteners are tight.

Excessive actuator travel (over one inch) is a sign that the brakes need to be adjusted. Jack wheel/tire off of the ground and rotate tire in the forward direction. Remove access hole cover plate on the lower back side of the backing plate and adjust the brakes until drag is felt on the wheel when spinning in the forward direction. Back off adjuster twenty clicks (notches) for two-wheel brake systems and fifteen clicks (notches) for four wheel brake systems. Adjust all wheels being sure to rotate in the forward direction only when adjusting to ensure proper adjustment.

**⚠ WARNING** ANY CORROSIVE MATERIALS (SALTWATER, FERTILIZERS) ARE DESTRUCTIVE TO METALS. TO PROPERLY MAINTAIN THE LIFE OF THE BRAKE SYSTEM FLUSHING WITH A HIGH-PRESSURE WATER HOSE IS RECOMMENDED. AFTER WASHING BE SURE TO GREASE ACTUATOR BEARINGS (SLIDES) AND OIL ALL MOVING PARTS. AT THE END OF THE SEASON IT IS RECOMMENDED THAT THE BRAKE DRUMS BE REMOVED AND CLEANED INSIDE. REPACK WHEEL BEARINGS BEING CAREFUL NOT TO CONTAMINATE THE BRAKE SYSTEM WITH GREASE. THIS WOULD BE A GOOD TIME TO READJUST THE BRAKES PER PREVIOUS INSTRUCTIONS.

### BLEEDING OF BRAKES

Before bleeding brakes fill the system with DOT 3 hydraulic brake fluid. Using a vacuum type brake bleeder (this type of brake bleeder is available at your local automotive store) follow manufacturers directions for bleeding.

Install bleeder hose on first wheel cylinder to be bled, if tandem bleed rear axles first. Have loose end of hose submerged in a glass container of brake fluid to observe bubbling. By working the manual hand pump you will draw the air out of the brake lines filling it with fluid.

By loosening the bleeder screw located in the wheel cylinder one turn the system is open to the atmosphere through the passage drilled in the screw. When the bubbling stops in the glass container close the bleeder screw securely. Follow the same

procedure at each wheel cylinder being sure to maintain the master cylinder fluid level at least one half full of brake fluid. After all wheels are bled fill the master cylinder to 3/8" below the full level.

Before using any equipment equipped with brakes the operation of the brakes should be checked. During travel attention should be paid to how the brakes are functioning and any necessary adjustments should be made. It will be necessary to check the brake lines and brake linings for wear. Brake linings should be replaced before the rivets or support plates come in contact with the wheel drum. Make all necessary maintenance before using equipment.

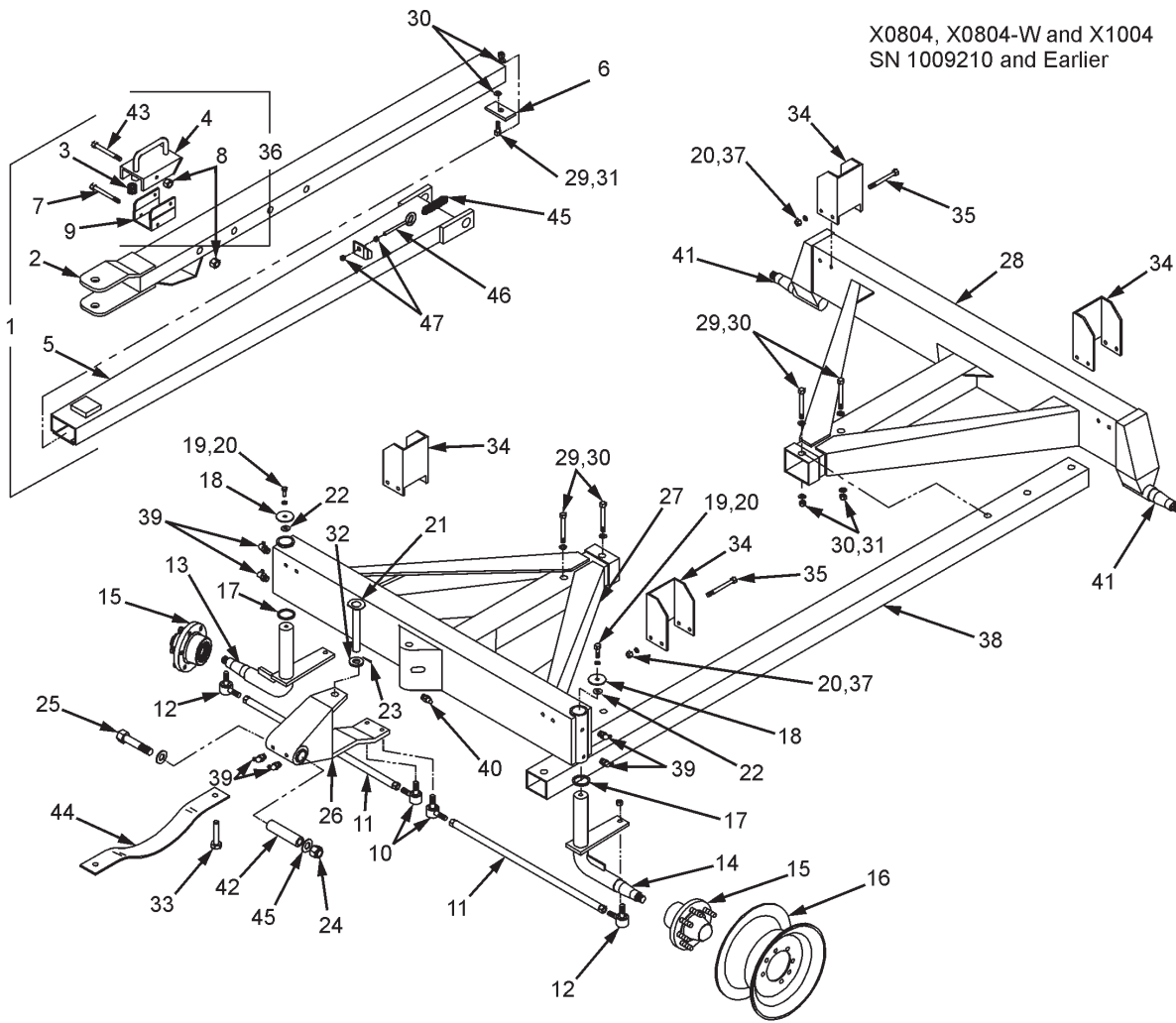
**NOTE:** The brake actuator has a **EMERGENCY LEVER** attached to a chain which is attached to the tow vehicle during use. In the event of the towed wagon becoming detached from the towed vehicle the chain will pull forward and lock the brakes to stop the travel of the wagon. **The lever will have to be manually released to disengage the brakes.** A lever guide bracket is located on the top of the actuator with a decal to show the brake on and brake off position. **If the wagon is towed with the brake lever lock in the brake on position damage to the brakes will result.**

This Page Intentionally Blank

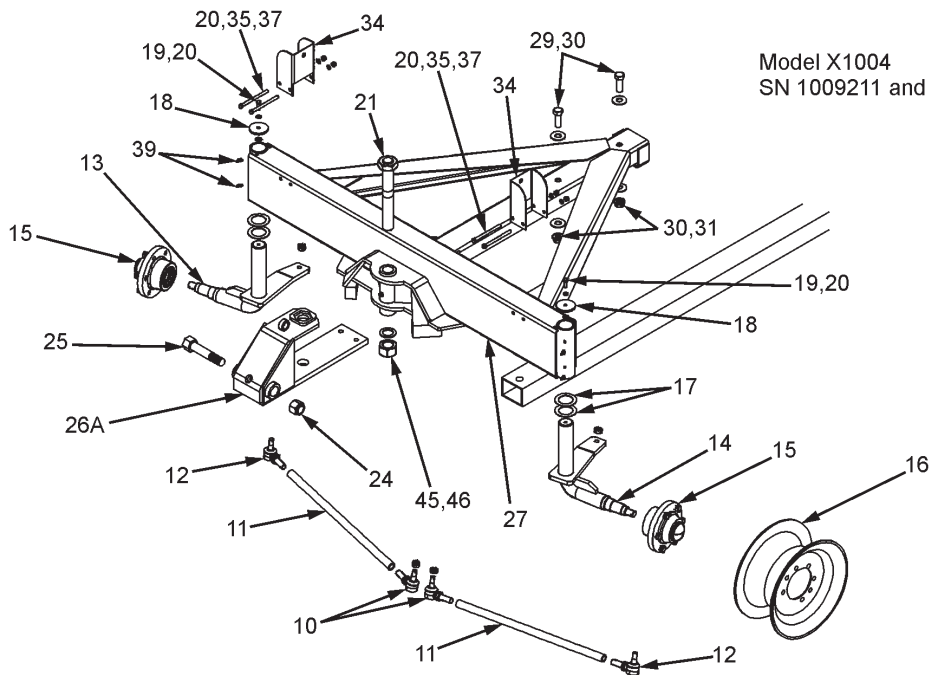
# REPAIR PARTS

## MODELS X0804, X0804-W & X1004

X0804, X0804-W and X1004  
SN 1009210 and Earlier



Model X1004  
SN 1009211 and Later



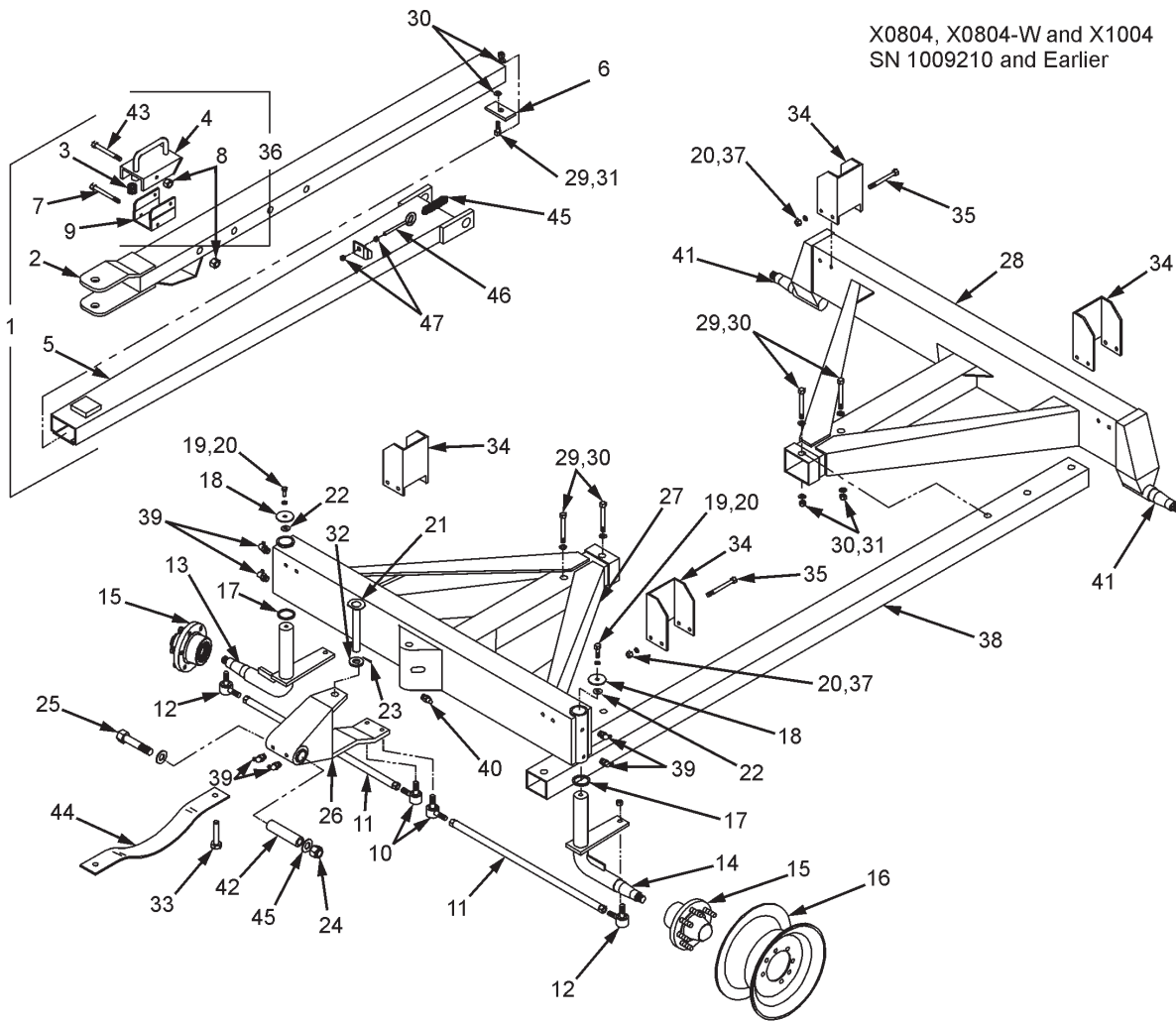
WagonGear-X1250-Parts-WG.cdr

## Models X0804, X0804-W & X1004

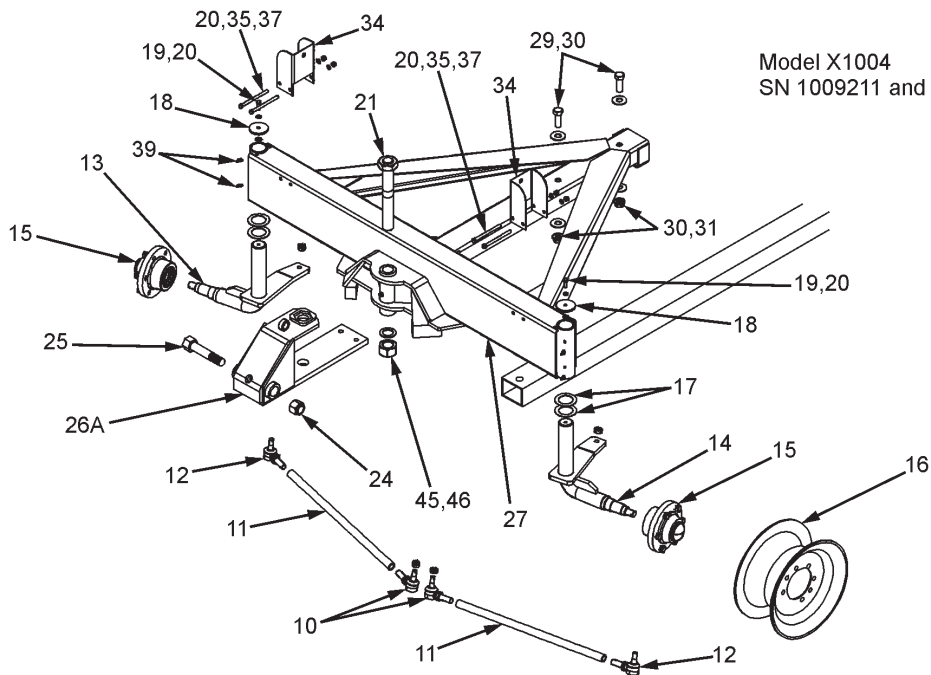
KEY	PART NO. X0804	PART NO. X1004	DESCRIPTION
1	75-0062	75-0062	Complete Quick Hitch Assembly
2	75-0070	75-0070	Complete Inner Tongue-2"x4" Inner Tube
3	29-0001	29-0001	Spring
4	75-0099	75-0099	Latch Bracket Top
5	75-3081	75-3081	Complete Outer Tongue Assembly
6	75-0363	75-0363	Inner Pole Stop
7	851-7510-6Z	851-7510-6Z	3/4-10 X 6" Gr. 5 M.B.
8	815-7510-Z	815-7510-Z	3/4-10 Nylon Insert Locknut
9	75-1091	75-1091	Latch Bracket Bottom
10	75-0301	75-0301	Tie Rod End Assembly, L.H.
11	75-0320	75-0320	Tie Rod
12	75-0300	75-0300	Tie Rod End Assembly, R.H.
13	75-0122	75-0124	Right Spindle Assembly
14	75-0123	75-0125	Left Spindle Assembly
15	75-0201	75-0202-H	Hub Assembly Complete (See Page 40)
16	75-0250		15 X 6 Wheel
		75-0251	15 X 8 Wheel
		75-0252	15 X 10 Wheel
17	808-1.75-2.5-14	808-2-3-14	Bottom Spindle Washer
18	75-0453	75-0453	Top Spindle Washer
19	851-3816-1Z	851-3816-1Z	3/8-16 X 1" Gr. 5 M.B.
20	806-0038-Z	806-0038-Z	3/8" Internal Tooth Lock Washer
21	75-0048	75-0048	Steering Pin (X1004 Prior to Serial #1009211)
		75-3400	Steering Bolt (X1004 Serial #1009211 & Later)
22	805-0038-Z	805-0038-Z	3/8" Flat Washer Zinc
23	38-0010	38-0010	1/4 X 2" Roll Pin (X1004 Prior to Serial #1009211)
	884-1008	884-1008	1-8 Top Locknut, Gr8 (Prior to serial #0808213, 1008214)
24	815-15012-Z	815-15012-Z	1 1/2-12 Nylon Locknut (Serial #0808213, 1008214 & Later)
	75-0406	75-0406	1-8 X 10-1/2" Gr. 8 Bolt W/Nut (Prior to serial #0808213, 0810214)
25	75-3400	75-3400	Tongue Stud Bolt 1-1/2" X 11-1/2" (Serial #0808213, 1008214 & Later)
	75-0032		Steering Assy. W/Sleeve & Tongue Bolt
26		75-0032	Steering Assy. W/Sleeve & Tongue Bolt, (Serial #1009210 & Earlier)
	26A	75-3202-1-4	Steering Assy. W/Sleeve & Tongue Bolt, (Serial #1009211 & Later)

# MODELS X0804, X0804-W & X1004

X0804, X0804-W and X1004  
SN 1009210 and Earlier

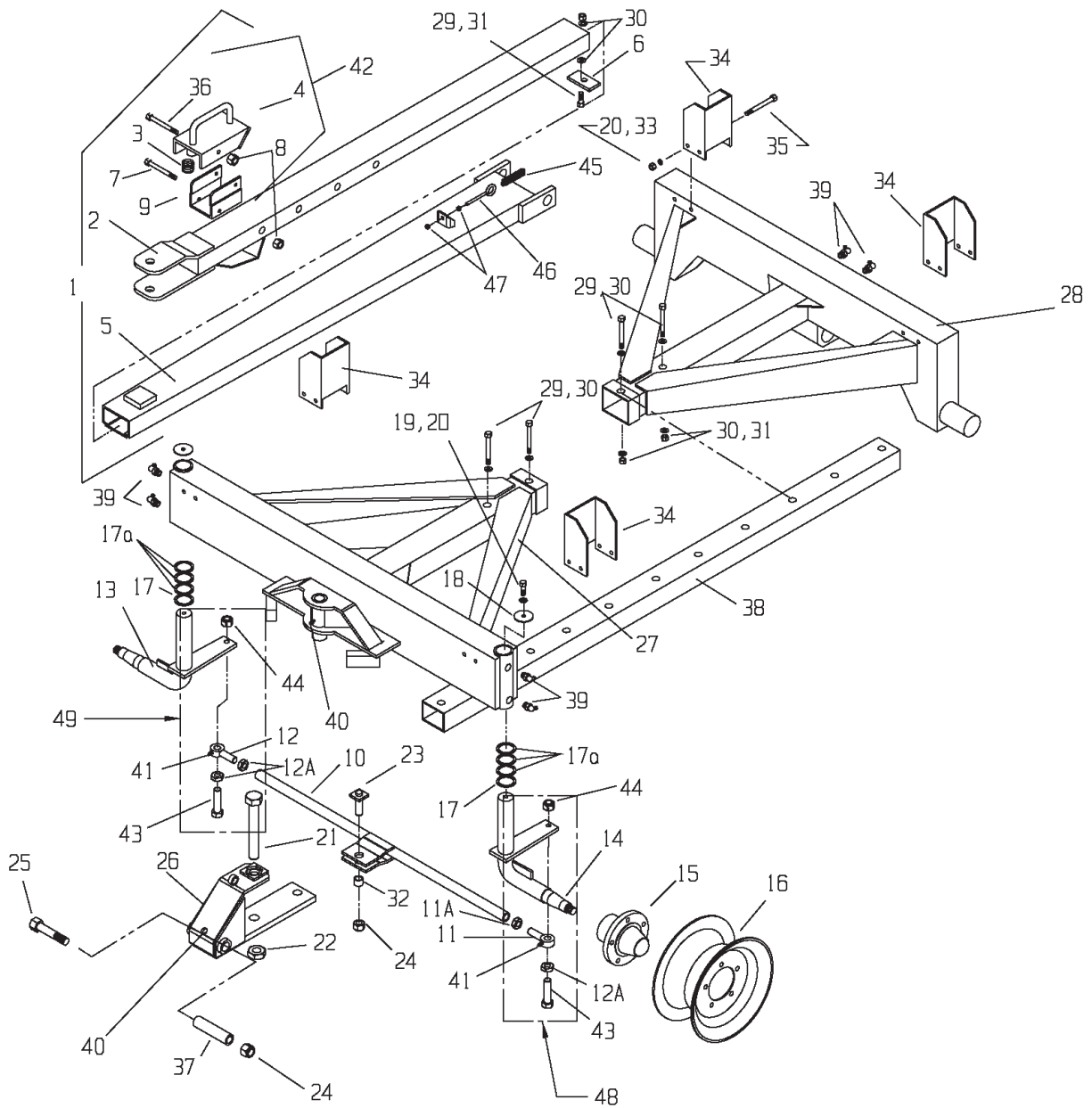


Model X1004  
SN 1009211 and Later



KEY	PART NO. X0804	PART NO. X1004	DESCRIPTION
27	75-0016	75-0002	Front Axle Assy. Less Spindles & Hubs (Serial #1009210 & Earlier)
		75-3202-1-1	Front Axle Assy. Less Spindles & Hubs (Serial #1009211 & Later)
	75-0016-W		Front Axle Assy. Less Spindles & Hubs-Wide Track
	75-0015	75-3202-1	Front Axle Complete -(X1004 Upgrade to new style)
	75-0015-W		Front Axle Complete-Wide Track
28	75-0018	75-0010	Rear Axle Assy. Less Spindles & Hubs
	75-0018-W		Rear Axle Assy. Less Spindles & Hubs-Wide Track
	75-0017	75-0009	Rear Axle Assy. Complete
	75-0017-W		Rear Axle Assy. Complete Wide Track
29	881-7516-2.25	881-7516-2.25	3/4-16 X 2-1/4" Gr. 8 M.B. Reach Bolt
30	805-0075-Z	805-0075-Z	3/4" Flat Washer Zinc
31	844-7516	844-7516	3/4-16 Locknut, Flange Top
32	828-0125	828-0125	1-1/4" SAE Washer
33	830-3816-1.75Z	830-3816-1.75Z	3/8-16 X 1-3/4" Tap Bolt Fully Threaded
34	75-0340	75-0340	Stake Pocket
35	851-3816-5Z	851-3816-5Z	3/8-16 X 5" Gr. 5 M.B.
36	75-1092	75-1092	Complete Latch Assembly
37	813-3816-Z	813-3816-Z	3/8-16 Nut Zinc
38	75-0050	75-0050	88" Reach
39	30-0003	30-0003	1/4-28 X 45 Degree Zerk
40	30-0001	30-0001	1/4-28 Straight Zerk
41	75-0101	75-0102	Rear Straight Spindle (Welded in)
42	75-0362	75-0362	Inner Tongue Sleeve (Prior to serial #0808213, 1008214)
43	851-7510-5.5Z	851-7510-5.5Z	3/4-10 X 5-1/2" Lower Latch Bolt
44	M-S-PKG	M-S-PKG	Lift Spring Update Package (X1004 Prior to Serial # 1009211)
45	29-0017	29-0017	Wagon Pole Lift Spring
46	811-5013-4Z	811-5013-4Z	1/2-13 X4" Eye Bolt
47	810-5013-Z	810-5013-Z	1/2" Spin Lock Nut

**MODEL X1206**  
**(1 OF 2)**

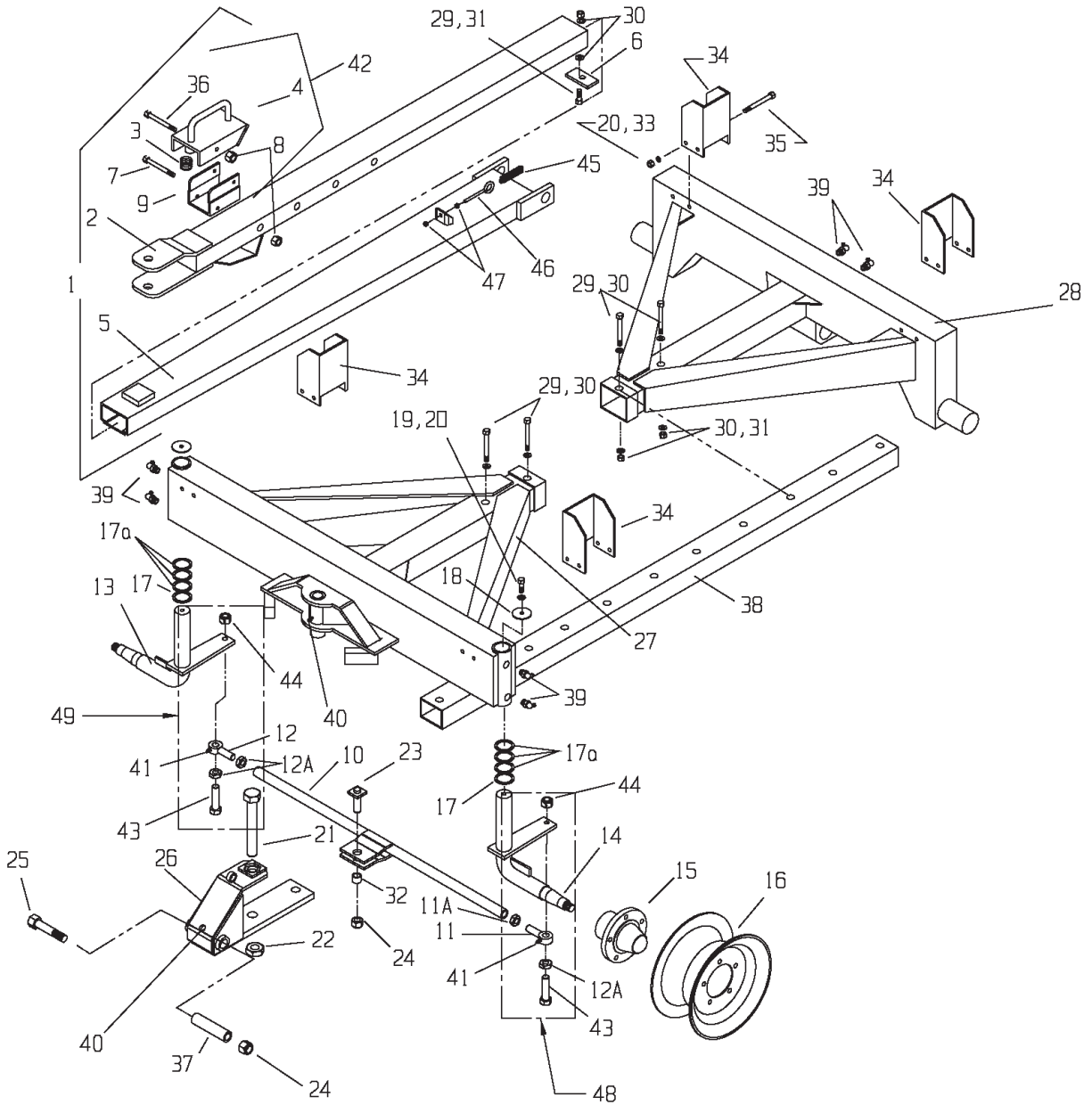


## MODEL X1206 (1 OF 2)

KEY	PART NO.	DESCRIPTION	QTY.
1	75-3061	Complete Quick Hitch Assembly	1
2	75-0072	Complete Inner Tongue 75"	1
3	29-0001	Spring	1
4	75-0099	Latch Bracket Top	1
5	75-3081	Complete Outer Tongue	1
6	75-0363	Inner Pole Stop	1
7	851-7510-6Z	3/4-10 X 6" Gr. 5 M.B.	1
8	815-7510-Z	3/4-10 Nylon Insert Locknut	2
9	75-1091	Latch Bracket Bottom	1
10	75-3300	Single Tie Rod Assembly	1
11	75-0304	Tie Rod Eye Assembly L.H.	1
11A	75-0304-2	1-14 L.H. Jam Nut	1
12	75-0305	Tie Rod Eye Assembly R.H.	1
12A	75-0305-2	1-14 R.H. Jam Nut	3
13	75-3120	Right Spindle Assembly	1
14	75-3121	Left Spindle Assembly	1
15	75-0202-H	Hub Assembly Complete (See Page 34)	6
16	75-0251	15 X 8" Wheel	6
	75-0252	15 X 10" Wheel	6
17	808-2-3-14	Bottom Spindle Washer	2
17A	808-2-3-10	Bottom Spindle Washer	8
18	75-0453	Top Spindle Washer	2
19	851-3816-1Z	3/8-16 X 1" Gr. 5 M.B.	2
20	806-0038-Z	3/8" Internal Tooth Lockwasher	2
21	75-3400	Steer Pin Bolt Assembly	1
22	815-15012-Z	1-1/2"-12 Nylon Locknut	1
23	75-0410	Steer Pin Shaft Assembly	1
24	884-1008	1-8 Top Locknut, Gr8 (Prior to serial #0812261 Tongue bolt only)	2
	815-15012-Z	1 1/2-12 Nylon Locknut (Serial #0812261& Later)	1

CONTINUED NEXT PAGE

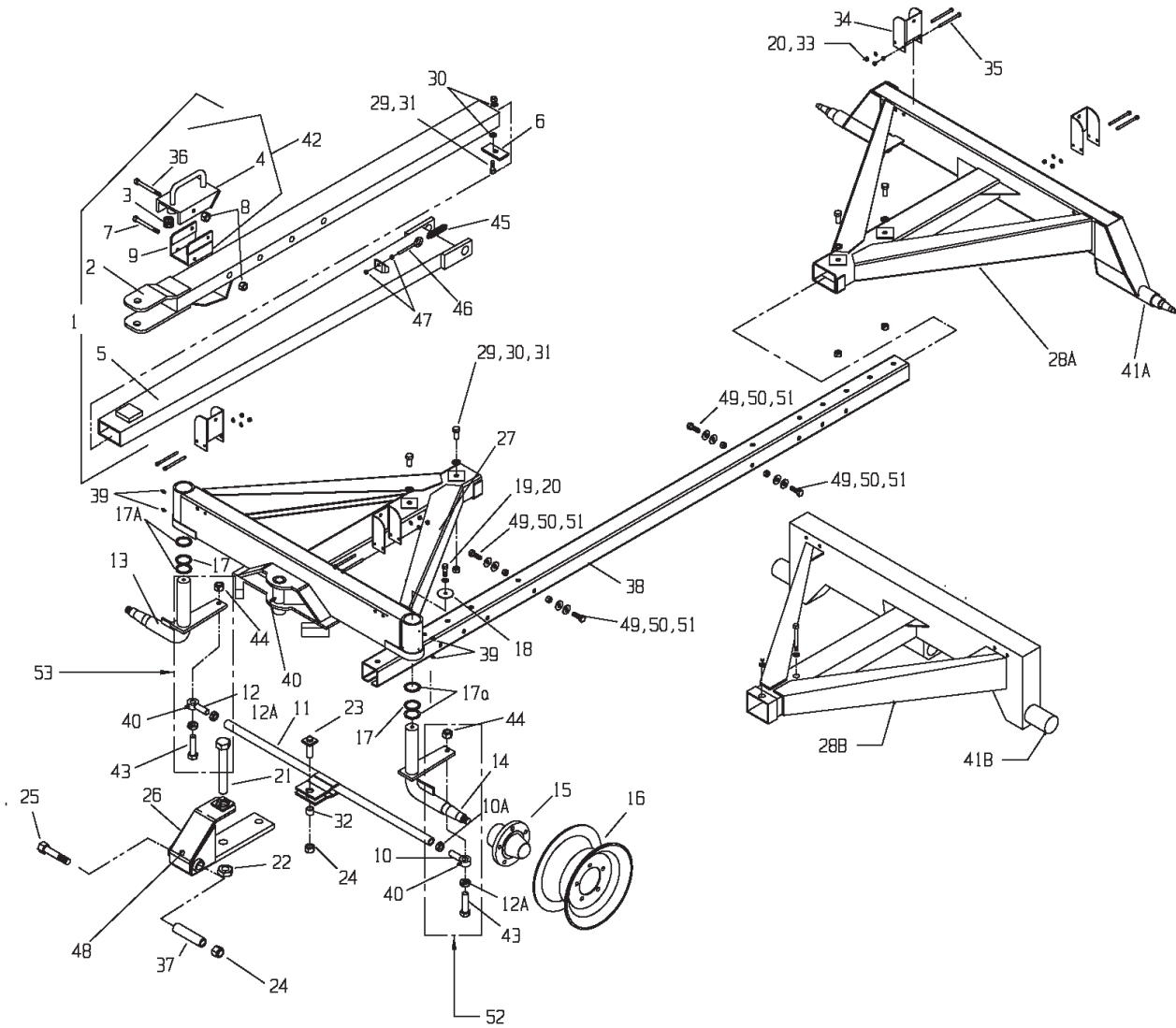
# MODEL X1206 (2 OF 2)



## MODEL X1206 (2 OF 2)

KEY	PART NO.	DESCRIPTION	QTY.
25	75-0406-1	1-8 X 10-1/2" Gr. 8 Bolt w/nut (Prior to serial # 0812261)	1
	75-3400	Tongue Stud Bolt 1-1/2" X 11-1/2" (Serial #0812261 & Later)	1
26	75-3030	Steering Assembly Less sleeve & Bolt	1
27	75-3008	Front Axle Less Spindles & Hubs	1
	75-3007	Front Axle Complete	1
28	75-0006	Rear Axle Less O-Beams & Hubs	1
	75-3009	Rear Axle Assembly Complete	1
29	881-7516-2.25	3/4-16 X 2-1/4" Reach Bolt	5
30	805-0075-Z	3/4" Flat Washer Zinc	10
31	844-7516	3/4-16 Locknut, Flange Top	5
32	13-0016	1.003I.D. X 1.316O.D. X 1" Long Bushing	1
33	813-3816-Z	3/8-16 Nut Zinc	8
34	75-0340	Stake Pocket	4
35	851-3816-5Z	3/8-16 X 5" Gr. 5 M.B.	8
36	851-7510-5.5Z	3/4-10 X 5-1/2" Gr. 5 M.B.	1
37	75-0362	Steering Assembly Inner Sleeve (Prior to serial #0812261)	1
38	75-0050	88" Reach	1
	75-0051	112" Reach (Optional)	1
39	30-0003	1/4-28 X 45 Degree Zerk	6
40	30-0004	1/4-28 X 90 Degree Zerk	1
41	30-0001	1/4-28 Straight Zerk	2
42	75-1092	Complete Latch Assembly	1
43	75-0413-1	1-14 X 4" Threaded Bolt	2
44	884-1014-Z	1-14 Top Locknut, Gr8	2
45	29-0017	Wagon Pole Lift Spring	1
46	811-5013-4Z	1/2-13 X4" Eye Bolt	1
47	810-5013-Z	1/2" Spin Lock Nut	2
48	75-0304-PKG	LH Tie Rod Eyelet Assy. W/nut, bolt, hdw	1
49	75-0305-PKG	RH Tie Rod Eyelet Assy. W/nut, bolt, hdw	1

# MODELS X1304 & X1506 ( 1 OF 2 )

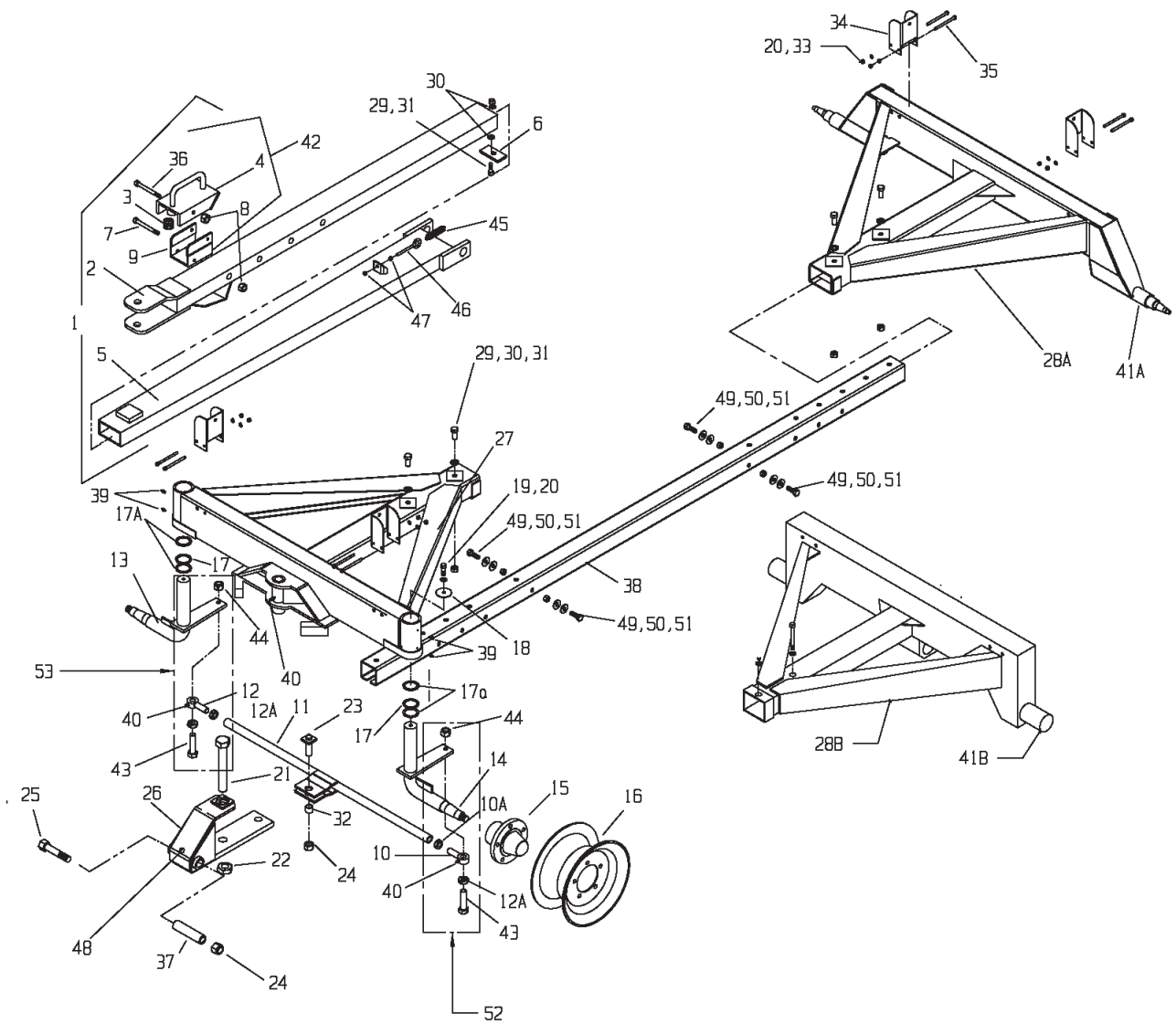


## MODELS X1304 & X1506 (1 OF 2)

KEY	PART NO. X1304	PART NO. X1506	DESCRIPTION
1	75-3061	75-3061	Complete Quick Hitch Assembly
2	75-0072	75-0072	Complete Inner Tongue 75"
3	29-0001	29-0001	Spring
4	75-0099	75-0099	Latch Bracket Top
5	75-3081	75-3081	Complete Outer Tongue Assembly
6	75-0363	75-0363	Inner Pole Stop
7	851-7510-6Z	851-7510-6Z	3/4-10 X 6" GR. 5 M.B.
8	815-7510-Z	815-7510-Z	3/4-10 Nylon Insert Locknut
9	75-1091	75-1091	Latch Bracket Bottom
10	75-0304	75-0304	Tie Rod Eye Assembly L.H.
10A	75-0304-2	75-0304-2	1-14 L.H. Jam Nut
11	75-3300	75-3300	Single Tie Rod Assembly
12	75-0305	75-0305	Tie Rod Eye Assembly R.H.
12A	75-0305-2	75-0305-2	1-14 R.H. Jam Nut
13	75-3122	75-3122	Right Spindle Assembly
14	75-3123	75-3123	Left Spindle Assembly
15	75-0205	75-0205	Hub assembly Complete (See Page 34)
16	75-0255	75-0255	15 x 10" Wheel
	75-0253	75-0253	16.1 x 11" Wheel
	75-0262-HD	75-0262-HD	16.1 x 14" Wheel
	75-0268-HD	75-0268-HD	22.5 x 8.25" Wheel
17	75-0502-1-P	75-0502-1-P	Nylon Thrust Washer
17A	75-0502-2-P	75-0502-2-P	Steel Washer
18	75-0455	75-0455	Top Spindle Washer
19	851-3816-1.25Z	851-3816-1.25Z	3/8-16 X 1-1/4" Gr. 5 M.B.
20	806-0038-Z	806-0038-Z	3/8" Internal Tooth Lockwasher
21	75-3400	75-3400	Steer Pin Bolt Assembly
22	815-15012-Z	815-15012-Z	1-1/2-12 Nylon Locknut
23	75-0410	75-0410	Steer Pin Shaft Assembly
24	884-1008	884-1008	1-8 Top Locknut, Gr8 (Prior to serial #0813240, 0815249 Tongue bolt only)
25	75-0406-1	75-0406-1	1-8 X 10-1/2" Gr. 8 Tongue Bolt W/Nut
	75-3400	75-3400	Tongue Stud Bolt 1-1/2" X 11-1/2" (Serial #0813240, 0815249 & Later)

CONTINUED NEXT PAGE

# MODELS X1304 & X1506 (2 OF 2)

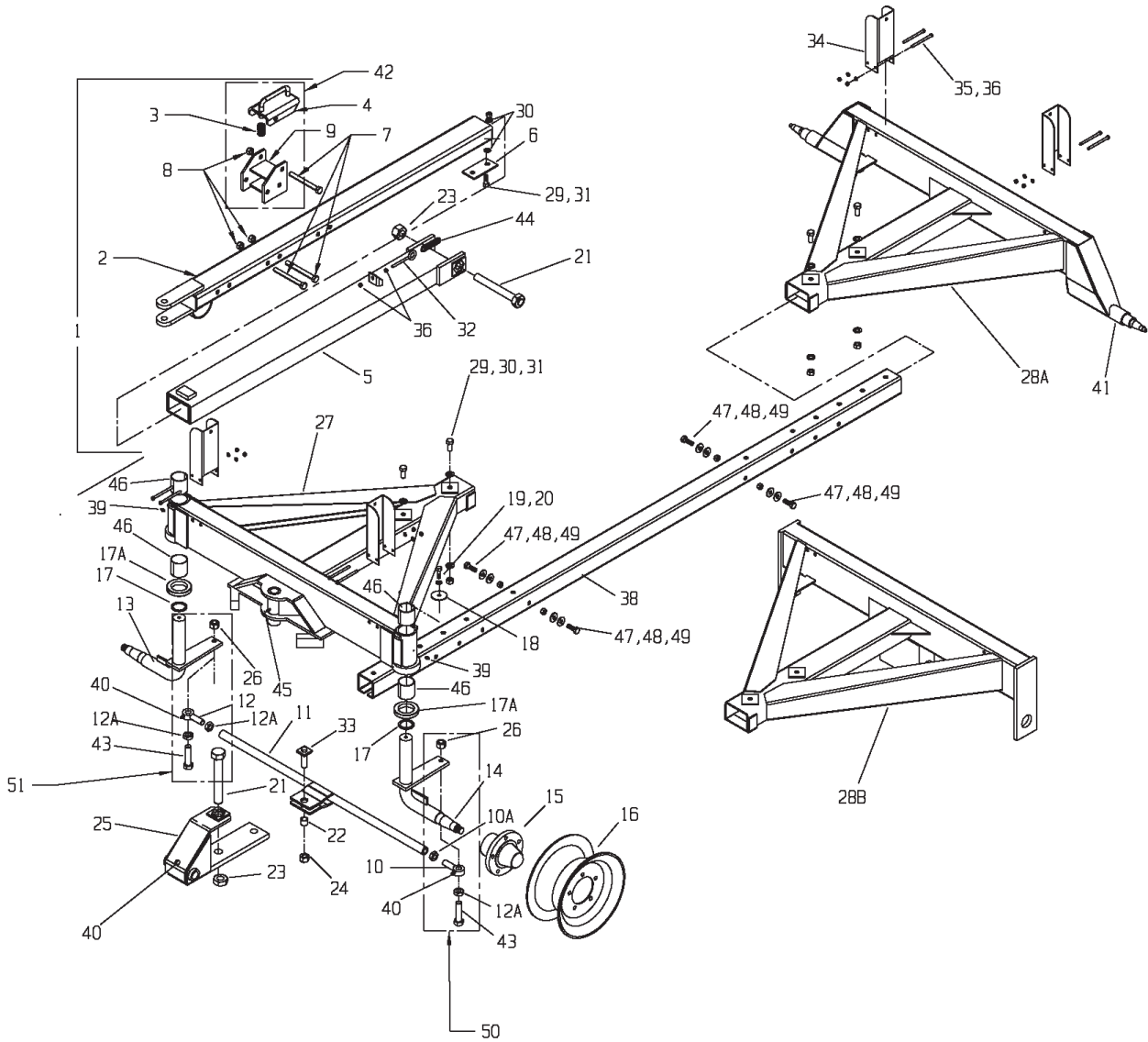


## MODELS X1304 & X1506 (2 OF 2)

KEY	PART NO. X1304	PART NO. X1506	DESCRIPTION
26	75-3030	75-3030	Steering Assembly Less Sleeve & Bolt
27	75-3011	75-3011	Front Axle Less Spindles & Hubs
	75-3010	75-3010	Front Axle Complete
28A	75-3013		Rear Axle Less Hubs
	75-3012		Rear Axle Assembly Complete
28B		75-3015	Rear Axle Assembly Less O-Beams & Hubs
		75-3014	Rear Axle Assembly Complete
29	881-7516-2.25	881-7516-2.25	3/4-16 X 2-1/4" Reach Bolt
30	805-0075-Z	805-0075-Z	3/4" Flat Washer Zinc
31	844-7516	844-7516	3/4-16 Locknut, Flange Top
32	13-0016	13-0016	1.003I.D. X 1.316O.D. X 1" Long Bushing
33	813-3816-Z	813-3816-Z	3/8-16 Nut Zinc
34	75-0340	75-0340	Stake Pocket
35	851-3816-5Z	851-3816-5Z	3/8-16 X 5" Gr. 5 M.B.
36	851-7510-5.5Z	851-7510-5.5Z	3/4-10 X 5-1/2" Gr.5 M.B.
37	75-0362	75-0362	Steering Assembly Inner Sleeve (Prior to serial # 0813240, 0815249)
38	75-3050	75-3050	112" Reach
	75-3052	75-3052	136" Reach (Optional)
39	30-0003	30-0003	1/4-28 X 45 Degree Zerk
40	30-0004	30-0004	1/4-28 X 90 Degree Zerk
41A	75-0104		2-3/4 x 18-1/4" Straight Spindle
41B		75-0006-3	X1506 Pivot Shaft
42	75-1092	75-1092	Complete Latch Assembly
43	75-0413-1	75-0413-1	1-14 X 4" Threaded Bolt
44	884-1014-Z	884-1014-Z	1-14 Top Locknut, Gr8
45	29-0017	29-0017	Wagon Pole Lift Spring
46	811-5013-4Z	811-5013-4Z	1/2-13 X 4" Eye Bolt
47	810-5013-Z	810-5013-Z	1/2" Spin Locknut
48	30-0001	30-0001	1/4-28 Straight Zerk
49	805-0063-Z	805-0063-Z	5/8" Flat Washer
50	815-6311-Z	815-6311-Z	5/8-11 Nylon Insert Locknuts
51	851-6311-2Z	851-6311-2Z	5/8-11 x 2" Machine Bolt Grade 5
52	75-0304-PKG	75-0304-PKG	LH Tie Rod Eyelet Assy. W/nut, bolt, hdw
53	75-0305-PKG	75-0305-PKG	RH Tie Rod Eyelet Assy. W/nut, bolt, hdw

**See Page 44 For Tandem Parts.**

# MODELS X1604 & X1906 (1 OF 2)

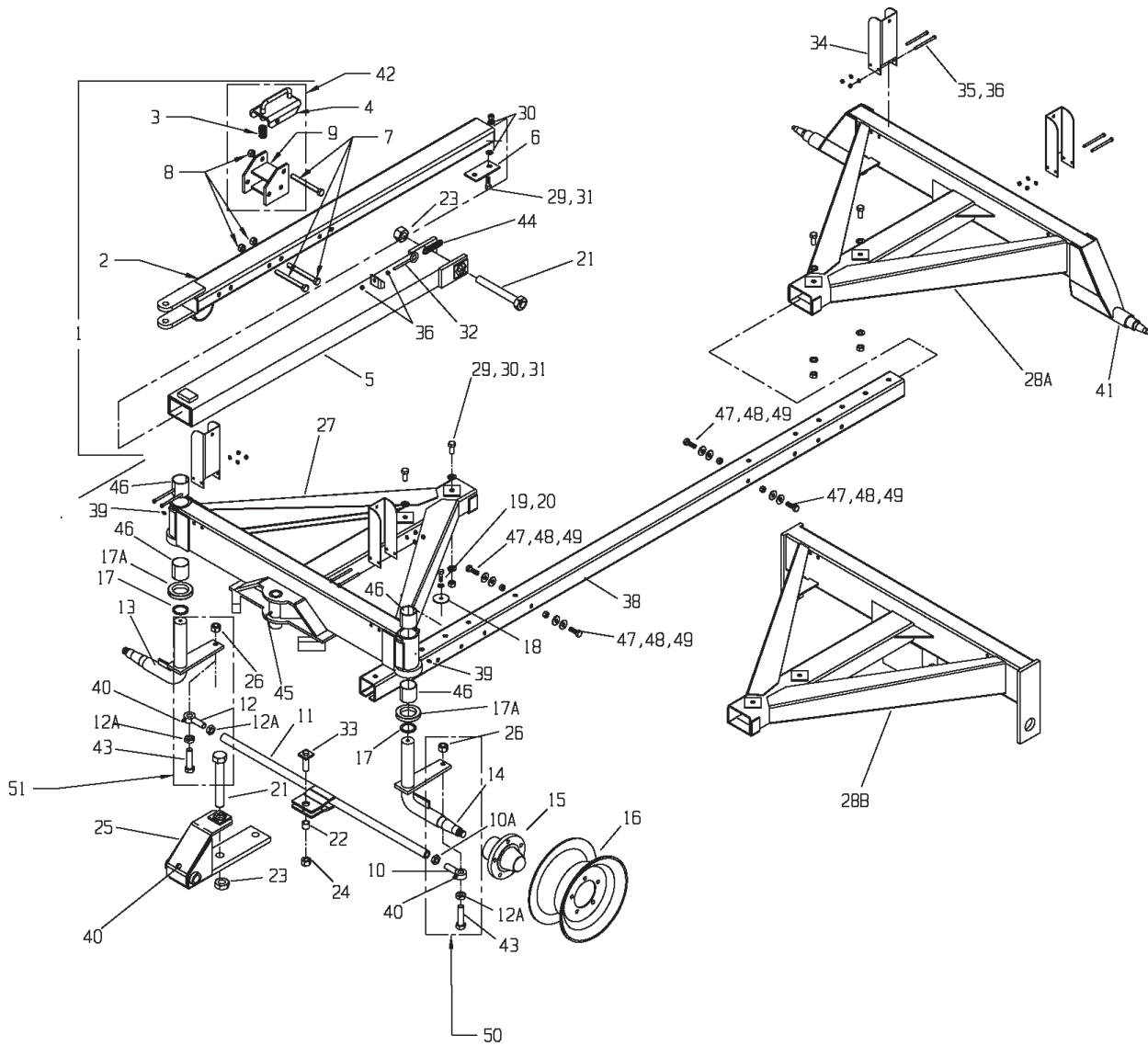


## MODELS X1604 & X1906 (1 OF 2)

KEY	PART NO. X1604	PART NO. X1906	DESCRIPTION	QTY.
1	75-3060	75-3060	Complete Quick Hitch Assembly	1
2	75-3070	75-3070	Complete Inner Tongue 75"	1
3	29-0001	29-0001	Spring	1
4	75-3091	75-3091	Latch Bracket Top	1
5	75-3080	75-3080	Complete Outer Tongue Assembly	1
6	75-0363	75-0363	Inner Pole Stop	1
7	851-7510-7Z	851-7510-7Z	3/4-10 X 7" Gr. 5 M.B.	3
8	815-7510-Z	815-7510-Z	3/4-10 Nylon Insert Locknut	3
9	75-3092	75-3092	Latch Bracket Bottom	1
10	75-0304	75-0304	Tie Rod Eye Assembly L.H.	1
10A	75-0304-2	75-0304-2	1-14 L.H. Jam Nut	1
11	75-3300	75-3300	Single Tie Rod Assembly	1
12	75-0305	75-0305	Tie Rod Eye Assembly R.H.	1
12A	75-0305-2	75-0305-2	1-14 R.H. Jam Nut	3
13	75-3124	75-3124	Right Spindle Assembly	1
14	75-3125	75-3125	Left Spindle assembly	1
15	75-0209	75-0209	Hub Assembly Complete (See Page 41)	AR
16	75-0255	75-0255	15 X 10" Wheel	AR
	75-0253	75-0253	16.1 X 11" Wheel	AR
	75-0262-HD	75-0262-HD	16.1 X 14" Wheel	AR
	75-0263-HD	75-0263-HD	16.1 X 16" Wheel	AR
	75-0268-HD	75-0268-HD	22.5 X 8.25" Wheel	AR
	75-0260	75-0260	22.5 X 13.5" Wheel	AR
17	75-3450	75-3450	Bottom Spindle Washer	2
17A	75-0503-GSM-BLUE	75-0503-GSM-BLUE	Spindle Thrust Bearing	2
18	75-0455	75-0455	Top Spindle Washer	2
19	851-3816-1.25Z	851-3816-1.25Z	3/8-16 X 1-1/4" Gr. 5 M.B.	2
20	806-0038-Z	806-0038-Z	3/8" Internal Tooth Lockwasher	2
21	75-3400	75-3400	Steer Pin Bolt Assembly	2
22	13-0016	13-0016	1.003I.D. X 1.316O.D. X 1" Long Bushing	1
23	815-15012-Z	815-15012-Z	1-1/2-12 Nylon Locknut	2
24	884-1008	884-1008	1-8 Top Locknut, Gr8	1
25	75-3030	75-3030	Steering Assembly Less Sleeve & Bolt	1

CONTINUED NEXT PAGE

# MODELS X1604 & X1906 (2 OF 2)

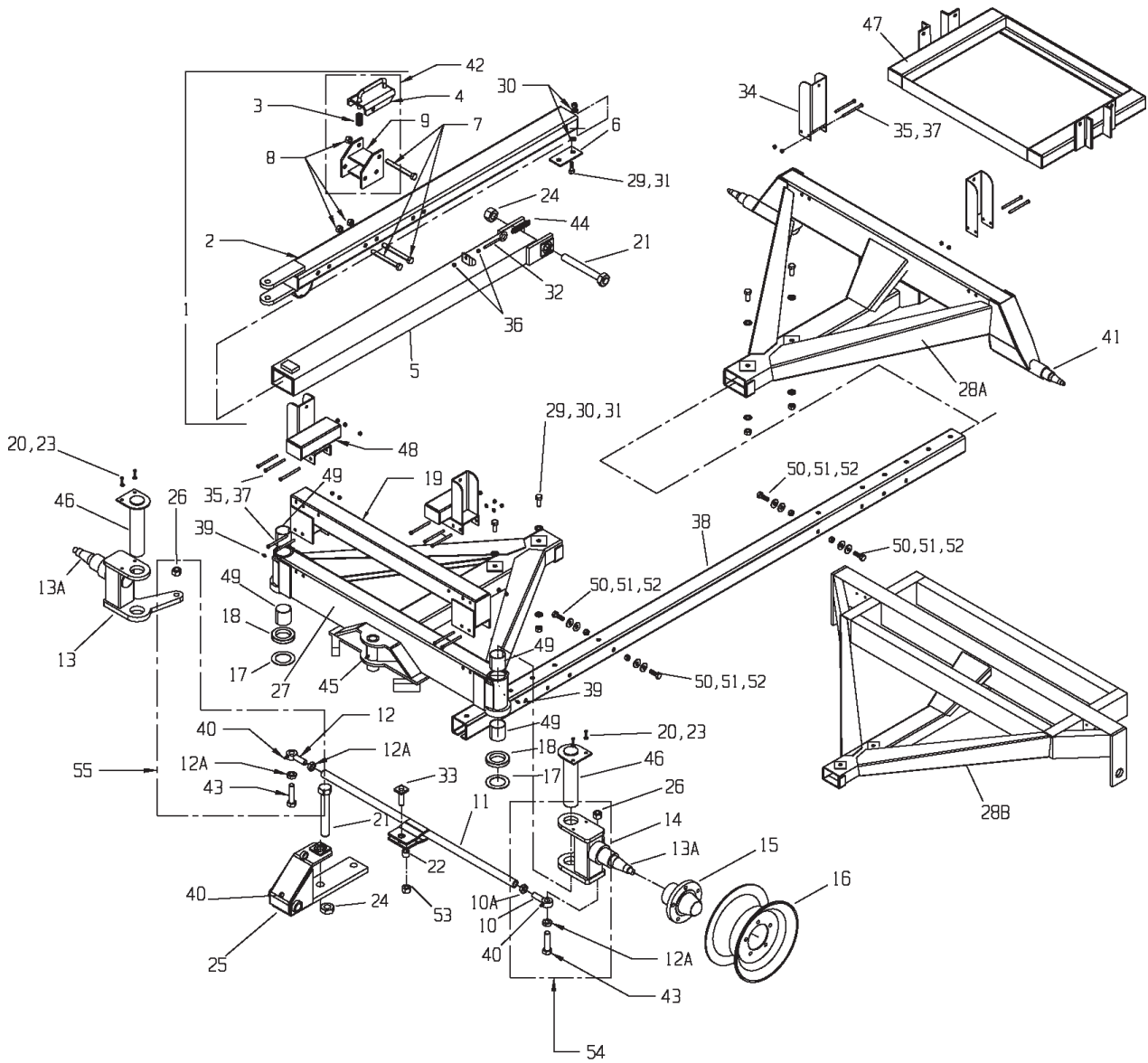


## MODELS X1604 & X1906 (2 OF 2)

KEY	PART NO. X1604	PART NO. X1906	DESCRIPTION	QTY.
26	884-1014-Z	884-1014-Z	1-14 Top Locknut, Gr8	2
27	75-3002	75-3002	Front Axle Less Spindles & Hubs	1
	75-3001	75-3001	Front Axle Assembly Complete	1
28A	75-3004		Rear Axle Less Hubs	1
	75-3003		Rear Axle Assembly Complete	1
28B		75-3006	Rear Axle Assembly Less O-beams & Hubs	1
		75-3005	Rear Axle Assembly Complete	1
29	881-7516-2.25	881-7516-2.25	3/4-16 X 2-1/4" Reach Bolt	5
30	805-0075-Z	805-0075-Z	3/4" Flat Washer Zinc	10
31	844-7516	844-7516	3/4-16 Locknut, Flange Top	5
32	811-5013-4Z	811-5013-4Z	1/2-13 X 4" Eye Bolt	1
33	75-0410	75-0410	Steering Pin Shaft Assembly	1
34	75-3340-1	75-3340-1	Hi Rise Stake Pocket 1/2" Bolt Holes	4
35	851-5013-5.5Z	851-5013-5.5Z	1/2-13 X 5-1/2" Gr. 5 M.B.	8
36	810-5013-Z	810-5013-Z	1/2" Spin Locknut	2
37	815-5013-Z	815-5013-Z	1/2" Nylon Locknut	8
38	75-3050	75-3050	112" Reach	1
	75-3052	75-3052	136" Reach (Optional)	1
39	30-0003	30-0003	1/4-28 X 45 Degree Zerk	2
40	30-0001	30-0001	1/4-28 Straight Zerk	1
41	75-0109		2-3/4 X 21-1/2" Straight Spindle	2
42	75-3090	75-3090	Complete Latch Assembly	1
43	75-0413-1	75-0413-1	1-14 X 4" Threaded Bolt	2
44	29-0017	29-0017	Wagon Pole Lift Spring	1
45	30-0004	30-0004	1/4-28 X 90 Degree Zerk	1
46	13-0019	13-0019	Front Spindle Bushing	4
47	805-0063-Z	805-0063-Z	5/8" Flat Washer	8
48	815-6311-Z	815-6311-Z	5/8-11 Nylon Insert Locknuts	4
49	851-6311-2Z	851-6311-2Z	5/8-11 x 2" Machine Bolt Grade 5	4
50	75-0304-PKG	75-0304-PKG	LH Tie Rod Eyelet Assy. W/nut, bolt, hdw	1
51	75-0305-PKG	75-0305-PKG	RH Tie Rod Eyelet Assy. W/nut, bolt, hdw	1

**See Page 45 For Tandem Parts.**

# MODELS X1704 & X2206 (1 OF 2)

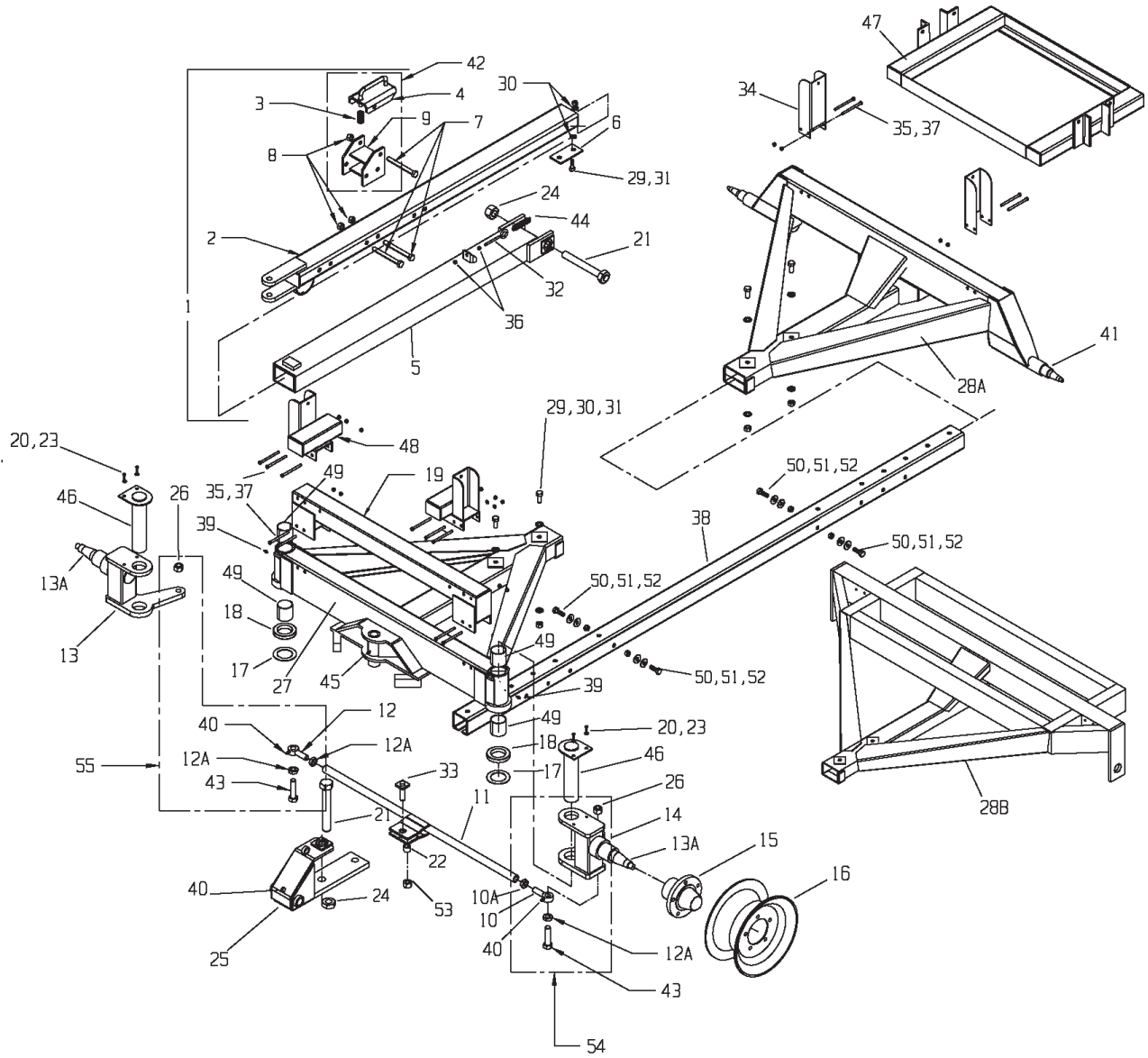


## MODELS X1704 & X2206 (1 OF 2)

KEY	PART NO. X1704	PART NO. X2206	DESCRIPTION	QTY.
1	75-3060	75-3060	Complete Quick Hitch Assembly	1
2	75-3070	75-3070	Complete Inner Tongue 75"	1
3	29-0001	29-0001	Spring	1
4	75-3091	75-3091	Latch Bracket Top	1
5	75-3080	75-3080	Complete Outer Tongue Assembly	1
6	75-0363	75-0363	Inner Pole Stop	1
7	851-7510-7Z	851-7510-7Z	3/4-10 X 7" Gr. 5 M.B.	3
8	815-7510-Z	815-7510-Z	3/4-10 Nylon Insert Locknut	3
9	75-3092	75-3092	Latch Bracket Bottom	1
10	75-0304	75-0304	Tie Rod Eye Assembly L.H.	1
10A	75-0304-2	75-0304-2	1-14 L.H. Jam Nut	1
11	75-3300	75-3300	Single Tie Rod Assembly	1
12	75-0305	75-0305	Tie Rod Eye Assembly R.H.	1
12A	75-0305-2	75-0305-2	1-14 R.H. Jam Nut	3
13	75-3126	75-3126	Right Trunion Spindle Assembly	1
13A	75-3101	75-3101	3 X 14-1/2" Front Trunion Spindle Only	2
14	75-3127	75-3127	Left Trunion Spindle Assembly	1
15	75-0207	75-0207	Hub Assembly Complete (See Page 41)	AR
16	75-0255	75-0255	15 X 10" Wheel	AR
	75-0253-HD	75-0253-HD	16.1 X 11" Wheel	AR
	75-0262-HD	75-0262-HD	16.1 X 14" Wheel	AR
	75-0263-HD	75-0263-HD	16.1 X 16" Wheel	AR
	75-0268-HD	75-0268-HD	22.5 X 8.25" Wheel	AR
	75-0260	75-0260	22.5 X 13.5 Wheel	AR
17	75-3450	75-3450	Bottom Spindle Washer	2
18	75-0503-GSM-BLUE	75-0503-GSM-BLUE	Spindle Thrust Bearing	2
19	75-3018-4	75-3018-4	Trunion Front Riser Tube Assembly	1
20	806-0050-Z	806-0050-Z	1/2" Internal Tooth Lockwasher	4
21	75-3400	75-3400	Steer Pin Bolt Assembly	1
22	13-0016	13-0016	1.003I.D. X 1.316O.D. X 1" Long Bushing	1
23	851-5013-1.25Z	851-5013-1.25Z	1/2-13 X 1-1/4" Gr. 5 M.B.	4
24	815-15012-Z	815-15012-Z	1-1/2-12 Nylon Locknut	2
25	75-3030	75-3030	Steering Assembly Less Bolt	1
26	884-1014-Z	884-1014-Z	1-14 Top Locknut, Gr8	2
27	75-3002	75-3002	Front Axle Less Trunion Assemblies & Hubs	1
	75-3018	75-3018	Front Axle Assembly Complete	1
28A	75-3017		Rear Axle Less Hubs	1
	75-3016		Rear Axle Assembly Complete	1

CONTINUED NEXT PAGE

# MODELS X1704 & X2206 (2 OF 2)

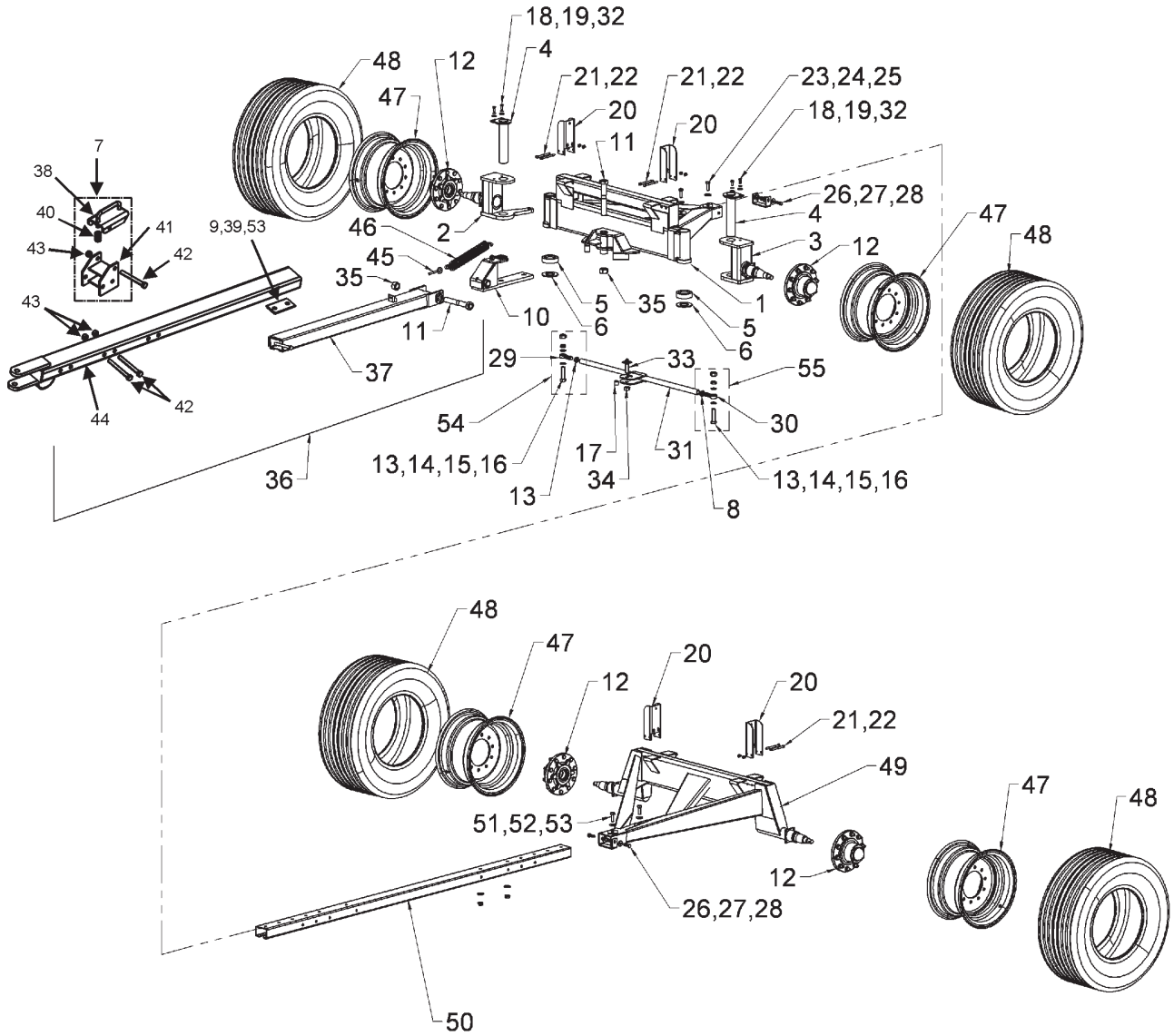


## MODELS X1704 & X2206 (2 OF 2)

KEY	PART NO. X1704	PART NO. X2206	DESCRIPTION	QTY.
28B		75-3020	Rear Axle Assembly Less O-beams & Hubs	1
		75-3019	Rear Axle Assembly Complete	1
29	881-7516-2.25	881-7516-2.25	3/4-16 X 2-1/4" Reach Bolt	5
30	805-0075-Z	805-0075-Z	3/4" Flat Washer Zinc	10
31	844-7516	844-7516	3/4-16 Locknut, Flange Top	5
32	811-5013-4Z	811-5013-4Z	1/2-13 X 4" Eye Bolt	1
33	75-0410	75-0410	Steering Pin Shaft Assembly	1
34	75-3340-1	75-3340-1	Hi Rise Stake Pocket 1/2" Bolt Holes	4
35	851-5013-5.5Z	851-5013-5.5Z	1/2-13 X 5-1/2" Gr. 5 M.B.	14
36	810-5013-Z	810-5013-Z	1/2" Spin Locknut	2
37	815-5013-Z	815-5013-Z	1/2" Nylon Locknut	14
38	75-3050	75-3050	112" Reach	1
	75-3052	75-3052	136" Reach (Optional)	1
39	30-0003	30-0003	1/4-28 X 45 Degree Zerk	2
40	30-0001	30-0001	1/4-28 Straight Zerk	1
41	75-3100		3 X 14-1/2" Straight Spindle	2
42	75-3090	75-3090	Complete Latch Assembly	1
43	75-0413-1	75-0413-1	1-14 X 4" Threaded Bolt	2
44	29-0017	29-0017	Wagon Pole Lift Spring	1
45	30-0004	30-0004	1/4-28 X 90 Degree Zerk	1
46	75-3018-3	75-3018-3	Trunion Shaft Assembly	2
47		75-3341	Rear Riser Tube Assembly	1
48		75-3342	Front Riser Tube Assembly	2
49	13-0019	13-0019	Front Spindle Bushing	4
50	805-0063-Z	805-0063-Z	5/8" Flat Washer	8
51	815-6311-Z	815-6311-Z	5/8-11 Nylon Insert Locknuts	4
52	851-6311-2Z	851-6311-2Z	5/8-11 x 2" Machine Bolt Grade 5	4
53	884-1008	884-1008	1-8 Top Locknut, Gr8	1
54	75-0304-PKG	75-0304-PKG	LH Tie Rod Eyelet Assy. W/nut, bolt, hdw	1
55	75-0305-PKG	75-0305-PKG	RH Tie Rod Eyelet Assy. W/nut, bolt, hdw	1

**See Page 45 For Tandem Parts.**

# MODEL X2004 (1 OF 2)

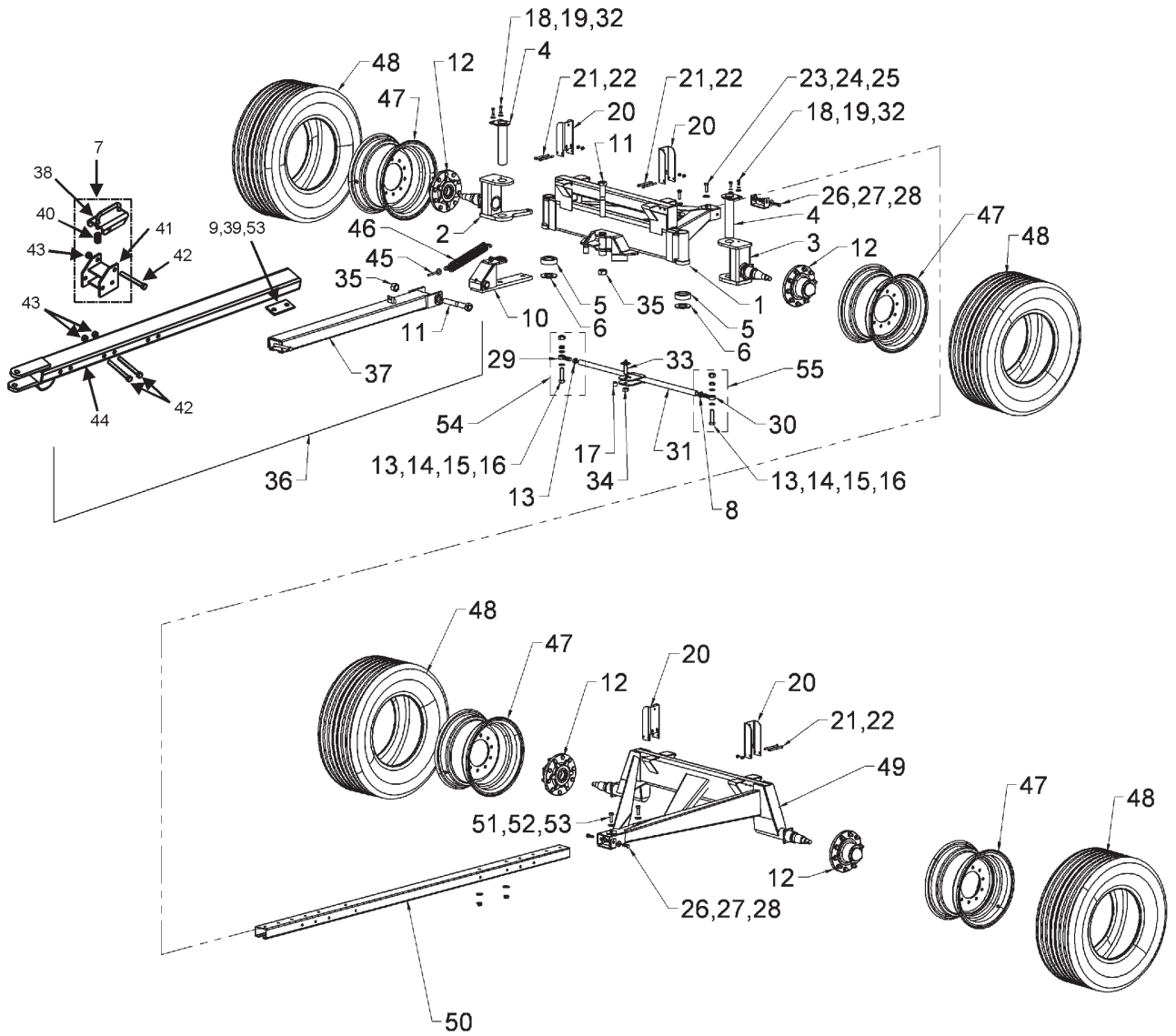


## MODEL X2004 (1 OF 2)

KEY	PART NO.	DESCRIPTION	QTY.
1	75-3161-3	X2004 FRONT AXLE WELDED ASSY W/O SPINDLES & HUBS	1
2	75-3161-5	X2004 STEERING ARM TRUNION-RIGHT	1
3	75-3161-4	X2004 STEERING ARM TRUNION-LEFT	1
4	75-3161-6	X2004 TRUNION SHAFT ASSEMBLY	2
5	75-0503-GSM-BLUE	THRUST BEARING	2
6	75-3450	2003 RUNNING GEAR SPINDLE WASHER	2
7	75-3090	Complete Latch Assembly	1
8	75-0304-2	1-14 L.H. Jam Nut	1
9	75-0363	Inner Pole Stop	1
10	75-3018-5	X2004 STEERING ASSEMBLY, WELDED	1
11	75-3400	X-SERIES RUNNING GEAR H.D. TONGUE/KING PIN BOLT	1
12	75-0211	HUB ASSEMBLY 10 BOLT: 11.25" BC: 8.60" PILOT	4
13	75-0305-2	1"-14 RH JAM NUT GRADE 5	2
14	805-0010-Z	1" FLAT WASHER ZINC	4
15	884-1014-Z	1-14 TOP LOCK NUT GRADE 8	2
16	75-0413-1	THREADED 1-14 X 4" GRD. 5 BOLT PLAIN	2
17	13-0016	BRONZE BUSHING	1
18	851-5013-1.25Z	1/2-13X1-1/4 GR5 M BOLT ZINC	4
19	806-0050-Z	1/2" INTERNAL TOOTH LOCK WASHER ZINC	4
20	75-3340-1	X1604/X1906 HI-RISE STAKE POCKET BENT	2
21	851-5013-5.5Z	1/2-13 X 5-1/2" MACHINE BOLT GRD. 5 ZINC	4
22	815-5013-Z	1/2-13 NYLON INSERT LOCKNUT ZINC	4
23	805-0075-Z	3/4" FLAT WASHER ZINC	4
24	881-7516-2.25	3/4-16 X 2-1/4" MACHINE BOLT GRD. 8	2
25	844-7516	3/4-16 FLANGE TOP LOCK NUT	2
26	805-0063-Z	5/8" FLAT WASHER ZINC	4
27	851-6311-2Z	5/8 x 2" GRADE 5 BOLT	2
28	815-6311-Z	5/8-11 NYLON INSERT LOCKNUT	2
29	75-0305	RH TIE ROD EYE ASSEMBLY WITH NUT	1
30	75-0304	LH TIE ROD EYE ASSY WITH NUT	1
31	75-3161-10	TIE ROD ASSEMBLY	1
32	805-0050-Z	1/2 FLAT WASHER ZINC	4
33	75-0410	STEERING PIN SHAFT ASSEMBLY	1
34	815-1008-Z	1-8" NYLON INSERT LOCK NUT ZINC	1
35	815-15012-Z	1-1/2-12" NYLON LOCK NUT ZINC	1

CONTINUED NEXT PAGE

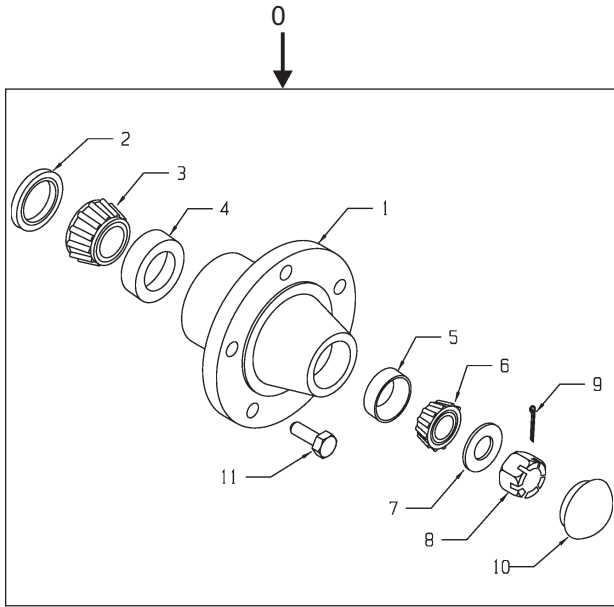
# MODEL X2004 (2 OF 2)



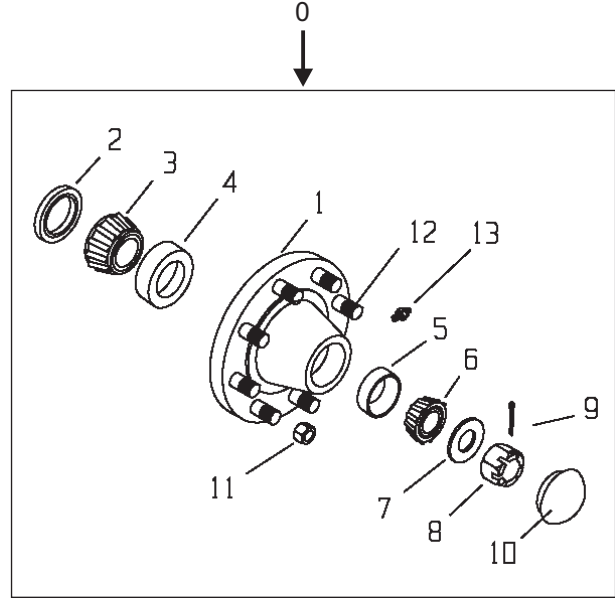
## MODEL X2004 (2 OF 2)

KEY	PART NO.	DESCRIPTION	QTY.
36	75-3060	Complete Quick Hitch Assembly	1
37	75-3080	Complete Outer Tongue Assembly	1
38	75-3091	Latch Bracket Top	1
39	881-7516-2.25	3/4-16 X 2-1/4" Reach Bolt	
40	29-0001	Spring	1
41	75-3092	Latch Bracket Bottom	1
42	851-7510-7Z	3/4-10 x 7" Gr. 5 M.B.	3
43	815-7510-Z	3/4-10 Nylon Insert Locknut	3
44	75-3070	Complete Inner Tongue 75"	1
45	811-5013-4Z	1/2-13 x 4" Eye Bolt	1
46	29-0017	Wagon Pole Lift Spring	1
47	75-0273	22.5x13 Wheel, 0" Offset, 425 Used Truck Tire	4
48	53-0028-1	Used 425/65/R22.5 Tire Only	4
49	75-3163	Rear Axle Less Hubs	1
	75-3160	Rear Axle Assembly Complete	1
50	75-3050	112" Reach	1
51	881-7516-2.25	3/4-16 x 2-1/4" Machine Bolt Grd 8	2
52	805-0075-Z	3/4" Flat Washer Zinc	4
53	844-7516	3/4-16 Flange Top Locknut	2
54	75-0304-PKG	LH Tie Rod Eyelet Assy. W/nut, bolt, hdw	1
55	75-0305-PKG	RH Tie Rod Eyelet Assy. W/nut, bolt, hdw	1

# HUB FOR MODELS X0804, X0804-W, X1004, X1206, X1304, X1506



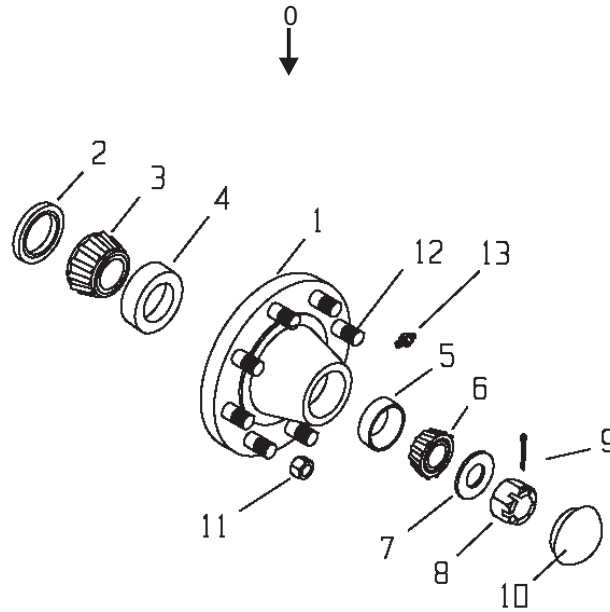
**Models X0804, X0804-W, X1004, X1206**



**Models X1304, X1506**

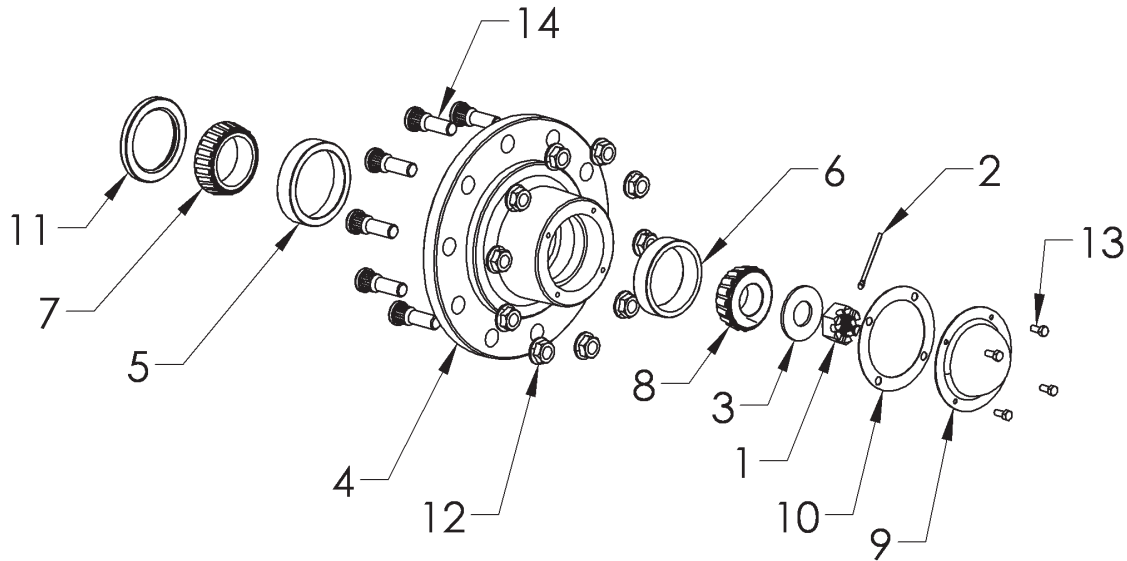
KEY	PRT NO. X0804 & X0804-W	PART NO. X1004 & X1206	PARTNO. X1304 & X1506	DESCRIPTION	QTY
0	75-0201	75-0202-H	75-0205	Hub , Complete Assembly	4 or 6
1	75-0201-1	75-0202-1-H	75-0205-1	Hub w/Races	1
2	75-0201-2	75-0202-2	75-0205-2	Grease Seal	1
3	75-0200-3	75-0202-3	75-0205-3	Inner Wheel Bearing	1
4	75-0200-4	75-0202-4	75-0205-4	Inner Wheel Race	1
5	75-0200-5	75-0200-5	75-0202-4	Outer Wheel Race	1
6	75-0200-6	75-0200-6	75-0202-3	Outer wheel Bearing	1
7	75-0200-7	75-0200-7	75-0205-7	Washer	1
8	75-0200-8	75-0200-8	75-0205-8	Nut	1
9	75-0200-9	75-0200-9	75-0205-9	Cotter Pin	1
10	75-0200-10	75-0200-10	75-0205-10	Cap	1
11	75-0200-11L	75-0200-11-H	75-0205-11-H	Lug Bolt/Lug Nut	6 or 8
12			75-0205-12	Stud Bolt	8
13			30-0002	1/8" NPT Straight Zerk	1

## HUB FOR MODELS X1604, X1906, X1704, X2206



KEY	PART NO. X1604 & X1906	PART NO. X1704 & X2206	DESCRIPTION	QTY
0	75-0209	75-0207	Hub , Complete Assembly	4 or 6
1	75-0207-1	75-0207-1	Hub w/Races	1
2	75-0209-2	75-0207-2	Grease Seal	1
3	75-0207-3	75-0207-3	Inner Wheel Bearing	1
4	75-0207-4	75-0207-4	Inner Wheel Race	1
5	75-0202-4	75-0202-4	Outer Wheel Race	1
6	75-0202-3	75-0202-3	Outer wheel Bearing	1
7	75-0205-7	75-0205-7	Washer	1
8	75-0205-8	75-0205-8	Nut	1
9	75-0205-9	75-0205-9	Cotter Pin	1
10	75-0205-10	75-0205-10	Cap	1
11	75-0205-11-H	75-0205-11-H	Lug Nut	8
12	75-0207-12	75-0207-12	Stud Bolt	8
13	30-0002	30-0002	1/8" NPT Straight Zerk	1

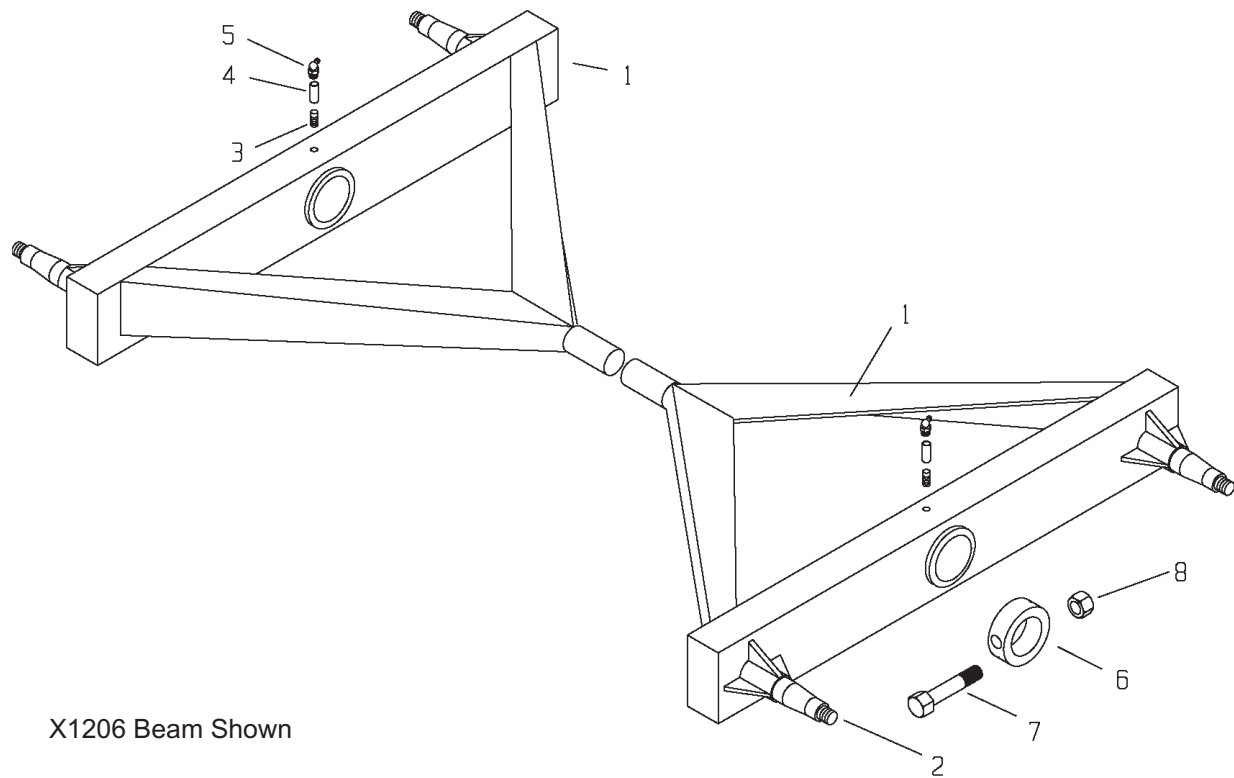
## HUB FOR MODEL X2004



KEY	PART NO.	DESCRIPTION	QTY.
0	75-0211	Hub Assembly - X2004	1
1	75-0208-8	Nut, Castle	1
2	75-0208-9	Cotter Pin	1
3	75-0208-7	Washer	1
4	75-0211-1	Hub with Brg Races	1
5	75-0211-4	Inner Wheel Race	1
6	75-0208-5	Outer Wheel Race	1
7	75-0211-3	Inner Wheel Brg Cone	1
8	75-0208-6	Outer Wheel Brg Cone	1
9	75-0208-10	Hub Cap	1
10	75-0208-14	Hub Cap Gasket	1
11	75-0211-2	Grease Seal	1
12	75-0208-11	Lug Nut-Flanged	10
13	75-0208-13	Hex Bolt, 0.3125-18 x .75	4
14	75-0208-12	Lug Bolt	10

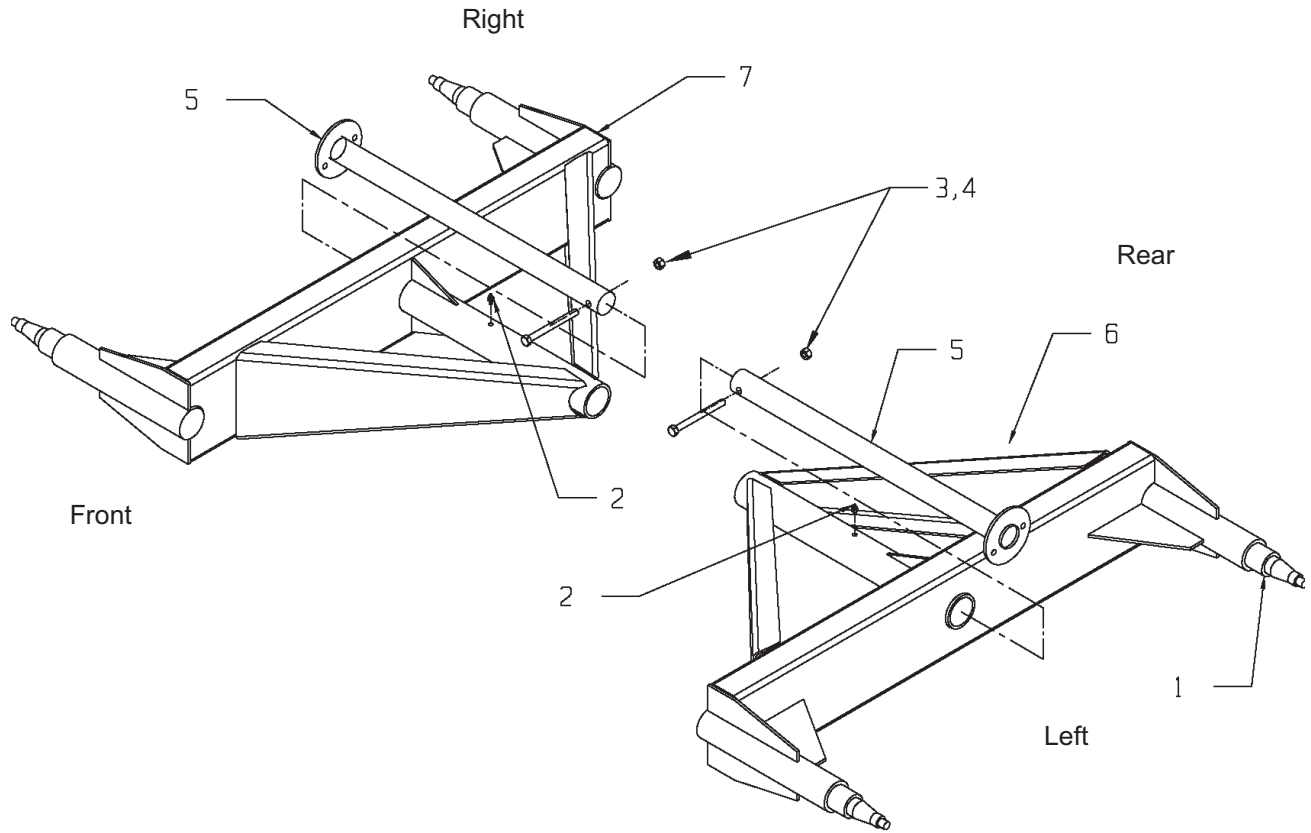
This Page Intentionally Blank

## TANDEM FOR MODELS X1206 & X1506



KEY	PART NO. X1206	PART NO. X1506	DESCRIPTION	QTY
1	75-0014	75-1002	Tandem Wing Assembly Less Hubs	2
2	75-0102	75-0104	Straight Spindle	4
3	30-0008	30-0008	1/8" NPT Nipple	2
4	30-0009	30-0009	1/8" NPT Coupler	2
5	30-0006	30-0006	1/8" NPT x 90 Degree Zerk	2
6	75-0360	75-0360	Retaining Collar	2
7	851-3816-4	851-3816-4	3/8-16 x 4" Gr. 5 M.B.	2
8	814-3816-Z	814-3816-Z	3/8-16 Center Locknut	2

## TANDEM FOR MODELS X1906 & X2206



KEY	PART NO. X1906	PART NO. X2206	DESCRIPTION	QTY.
1	75-0112	75-3100	Straight Spindle	4
2	30-0007	30-0007	1/8" NPT X 45 Degree Zerk	2
3	881-6311-5.5Z	881-6311-5.5Z	5/8-11x5-1/2" Gr. 8 M.B.	2
4	815-6311-Z	815-6311-Z	5/8-11 Nylon Locknut	2
5	75-3005-1	75-3005-1	Pivot Shaft Weldment	2
6	75-3151	75-3153	Left O-Beam Assembly Less Hubs	1
	75-3151-B	75-3153-B	Left O-Beam Assembly Less Hubs 2-Brake	AR
	75-3151-BB	75-3153-BB	Left O-Beam Assembly Less Hubs 4-Brake	AR
7	75-3150	75-3152	Right O-Beam Assembly Less Hubs	1
	75-3150-B	75-3152-B	Right O-Beam Assembly Less Hubs 2-Brake	AR
	75-3150-BB	75-3152-BB	Right O-Beam Assembly Less Hubs 4-Brake	AR

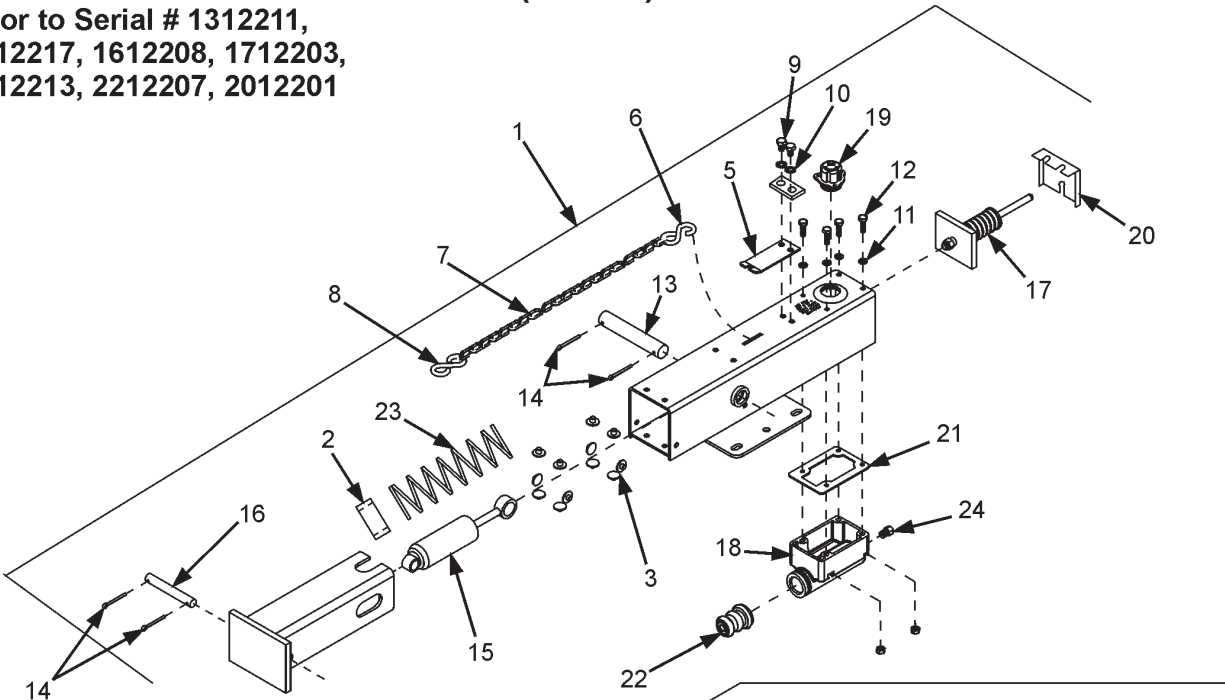


## X-SERIES OPTIONAL BRAKE PACKAGE (1 OF 3)

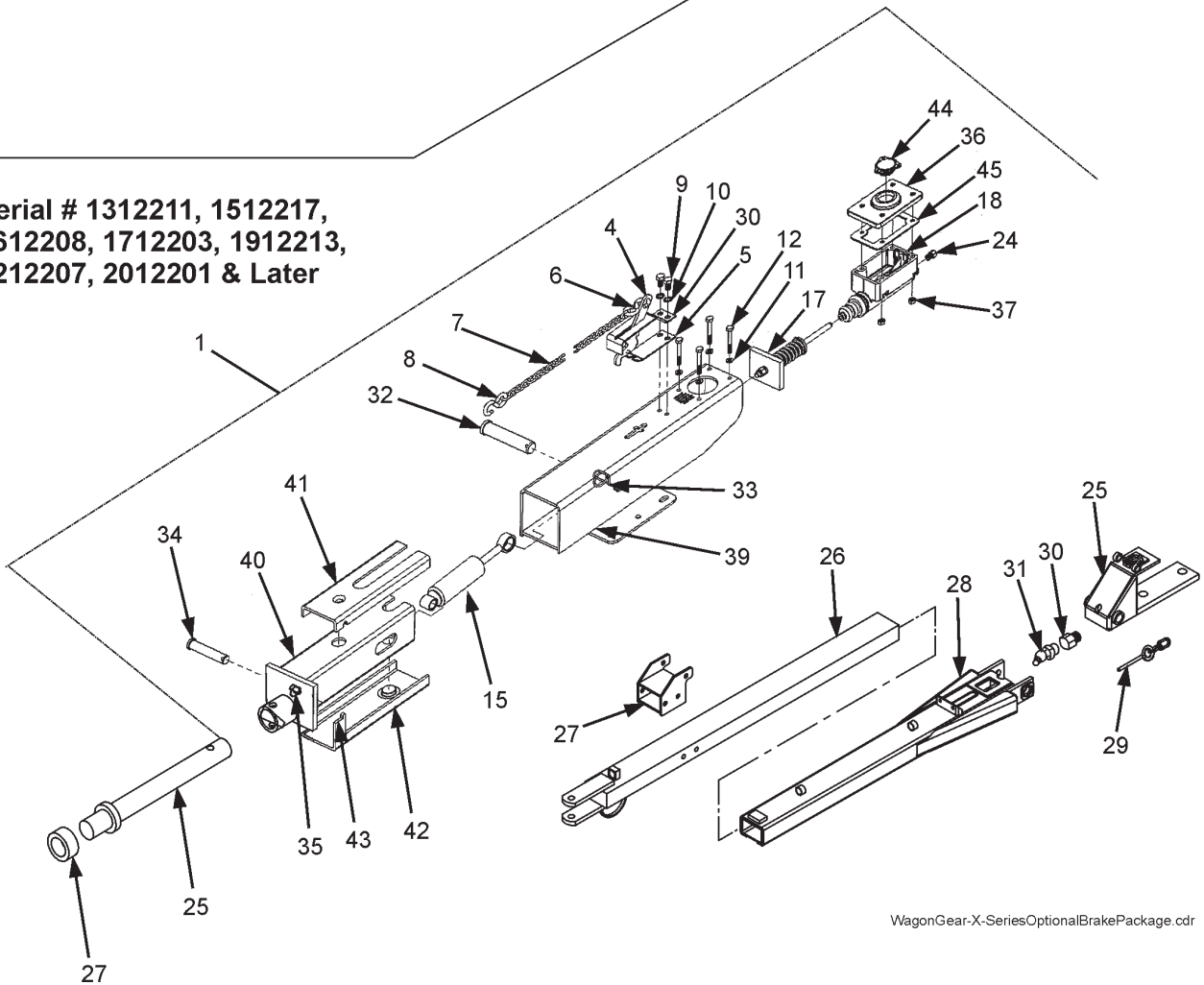
KEY	PART #	DESCRIPTION	QTY.
1	57-0029	X-Series Optional Brake Actuator	1
2	57-0029-1	Spring Spacer	1
3	57-0029-2	Nylon Slide Bearing Button	12
4	*57-0029-3	Safety Break-Away Lever	1
5	*57-0029-4	Safety Break-Away Lock	1
6	57-0009-2	S-Hook (Heavy Stationary)	1
7	57-0030	Safety Break-Away Chain 96"	1
8	33-0032-1	S-Hook (Break-Away)	1
9	57-0029-5	5/16-18 x 5/8" Machine Bolt Grade 5	2
10	57-0029-6	5/16" External Tooth Lock-Washer	2
11	822-0025-Z	1/4" Split Lock-Washer	4
12	851-3118-2Z	5/16-18 X 2" Machine Bolt Grade 5	4
13	57-0029-7	Damper Pin 7/8 x 4-15/16"	1
14	57-0029-8	5/32 x 1-1/4" Cotter Pin	4
15	57-0029-9	Damper Shock	1
16	57-0029-10	Damper Pin 5/8 x 3-3/4"	1
17	57-0029-11	Push Rod Assembly	1
18	57-0029-12	Master Cylinder Assembly	1
19	57-0029-13	Actuator Filler Cap W/Diaphragm & O-Ring	1
20	57-0029-14	Actuator Rear Cover	1
21	57-0029-15	Master Cylinder Gasket	1
22	57-0029-16	Master Cylinder Protective Boot	1
23	29-0009	Spring	1
24	57-0029-17	Inverted Flare Fitting - Full Flow	1
25	75-3031	Brake Steering Assembly 2-Spring W/Hose Mt. Brk.	1
	75-3018-5-B	XBB2004 Brake Steering Assy 2-Spring W/Hose Mount Bracket	1
26	75-3071	Brake Inner Pole Welded Assembly 68-3/8" Standard	1
	75-3072	Brake Short Inner Pole Welded Assy 55-5/8" Optional	1
27	75-3093	Brake Lower Latch Assembly	1
28	75-3083	Brake Outer Pole Assembly	1
29	75-3042	Lift Eyebolt / Chain Assy	2
30	930-3601	1/8" NPTx1/4-28 Adapter	1
31	30-0007	1/8"x45 Degree Zerk	1
32	57-0037-6	Cold Headed Clevis Pin .875	1
33	57-0037-7	Ring Lock Cotter 7/8" Shaft	1
34	57-0037-8	Front Shock Pin	1
35	57-0037-9	Ring Lock Cotter 5/8" Shaft	1
36	57-0037-10	Master Cylinder Cover	1
37	810-2520-Z	1/4-20 Nut	4
38	57-0037-11	Emergency Lever Guide	1
39	57-0037-1	Outer Case	1
40	57-0037-2	Inner Slide Tube	1
41	57-0037-3	Slide Channel Top	1
42	57-0037-4	Slide Channel Bottom	1
43	57-0037-5	Slide Spacer	2
44	57-0037-12	Master Cylinder Cap Assembly	1
45	57-0037-13	Master Cylinder Cork Gasket	1

# X-SERIES OPTIONAL BRAKE PACKAGE (2 OF 3)

**Prior to Serial # 1312211,  
1512217, 1612208, 1712203,  
1912213, 2212207, 2012201**



**Serial # 1312211, 1512217,  
1612208, 1712203, 1912213,  
2212207, 2012201 & Later**

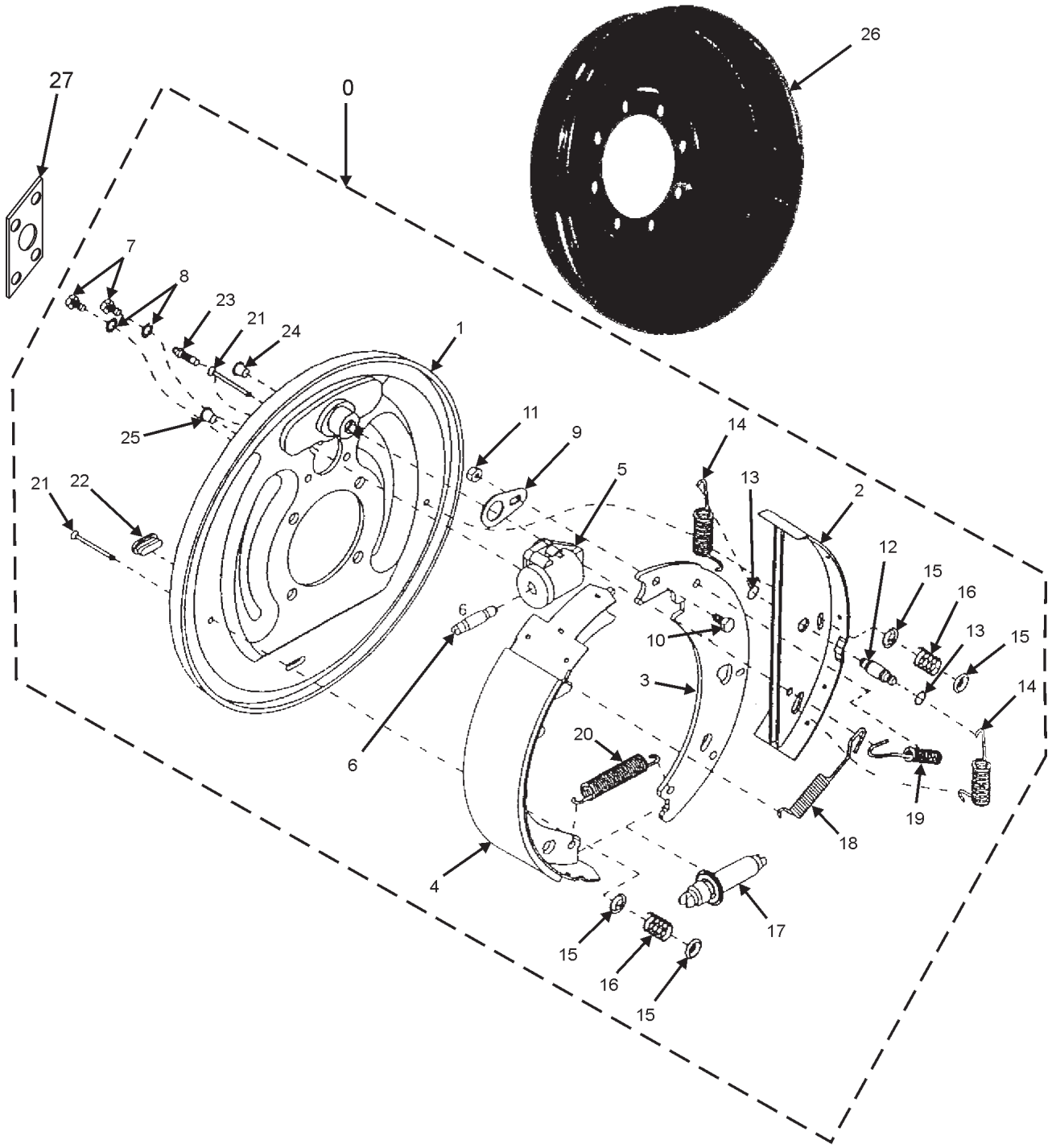


WagonGear-X-SeriesOptionalBrakePackage.cdr

## X-SERIES OPTIONAL BRAKE PACKAGE (2 OF 3)

KEY	PART #	DESCRIPTION	QTY.
<b>THE FOLLOWING PARTS ARE NOT ILLUSTRATED</b>			
	57-0029-20	Emergency Lever Guide W/Decal	1
	57-0029-20-1	Brake On/Brake Off Decal Only	1
	57-0029-18	1-1/4" Master Cylinder Repair Kit (Not Shown)	1
	57-0029-19	Lever Replacement Kit (Includes Items W/*)	1
	32-0024	9/32" Brake line Loom Clamp	AR
	57-0010	18"Hydraulic Brake Hose	AR
	57-0011	Hose Mount Bracket	AR
	57-0013	Frame Tee W/Clip	AR
	57-0014-2	Brake Line Union	AR
	57-0020	90" Brake Line	AR
	57-0021	40" Brake Line	AR
	57-0031	Actuator Pole Clip Nut	4
	32-0036	28" Cable Ties	AR
	57-0017	Frame Tee Plug	AR
	75-0207B	X1704/X2206 Brake Hub Assembly	AR
	75-0205B	X1304/X1506 Brake Hub Assembly	AR
	75-0209B	X1604/X1906 Brake Hub Assembly	AR
	813-5020-Z	1/2-20 Nut Fine Thread Zinc	AR
	822-0050-Z	1/2" Split Lock-Washer	AR
	825-25-1Z	1/4 x 1" Self Tapping Screw	AR
	851-5020-1Z	1/2-20 x 1" UNF Grade 5 Machine Bolt Zinc	AR
	806-0050-Z	1/2" Internal Tooth Lock-Washer Zinc	AR

# X-SERIES OPTIONAL BRAKE PACKAGE (2 OF 3)

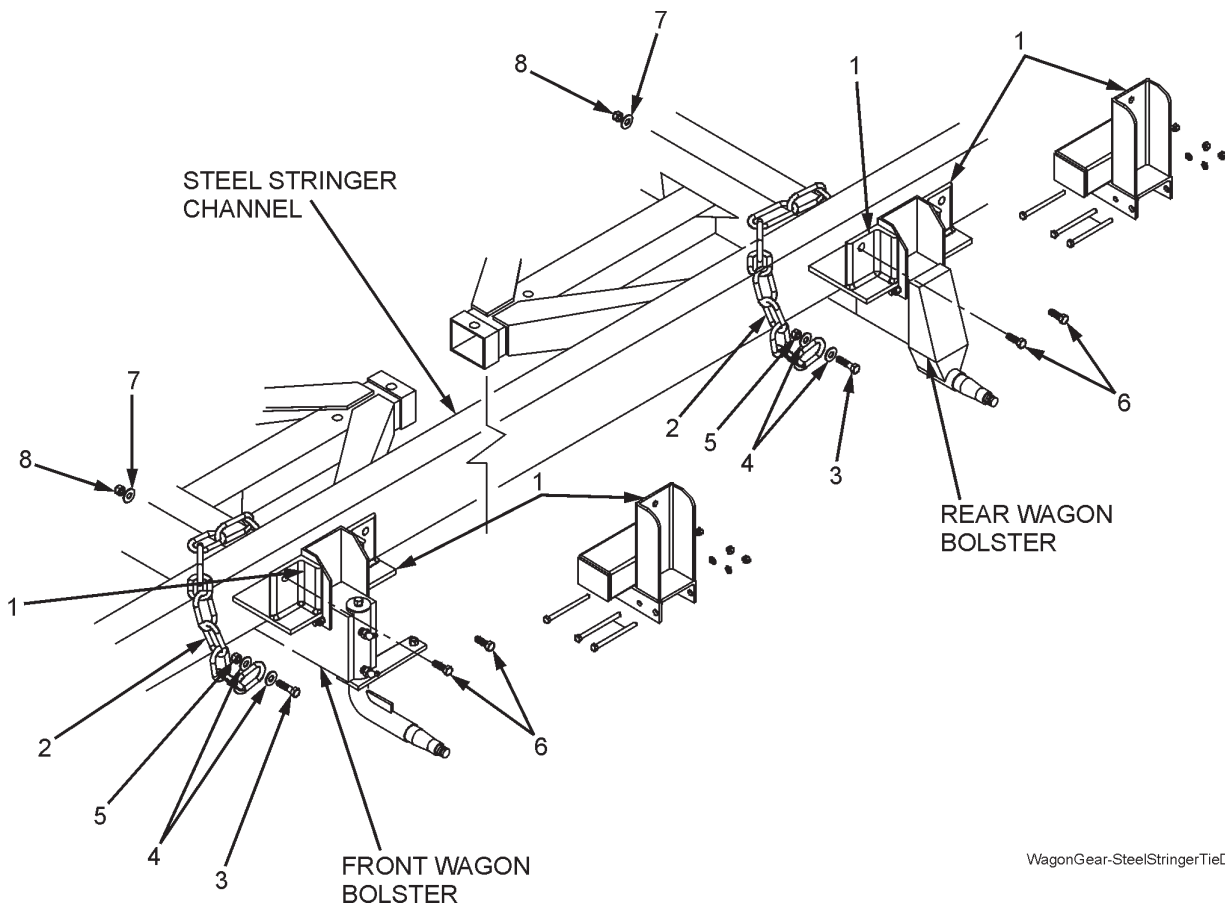


WagonGear-X-Series-FreeBackingBrakeAssembly.cdr

## X-SERIES OPTIONAL BRAKE PACKAGE (2 OF 3)

KEY	PART #	DESCRIPTION	QTY.
0	57-0002	13" R.H. Free Backing Brake Assembly	1
	57-0003	13" L.H. Free Backing Brake Assembly	1
1	57-0002-2	Back Plate Assembly	1
2	57-0002-3	Brake Shoe Assembly	1
3	57-0002-4	Shoe Lever	1
4	57-0002-5	Shoe Assembly	1
5	57-0003-1	Wheel Cylinder assembly Left	1
	57-0002-1	Wheel Cylinder assembly Right (Not Shown)	1
6	57-0002-6	Push Rod	1
7	57-0002-7	5/16-18 UNC X 1/2" H.H.M.B.	2
8	57-0002-8	5/16" External Tooth Lockwasher	2
9	57-0002-9	Travel Link	1
10	57-0002-10	5/16-18 UNC X 5/8" H.H.M.B.	1
11	57-0002-11	5/16-18 UNC Bi-Way Locknut	1
12	57-0002-12	Double Pin shoe	1
13	57-0002-13	Retaining Ring	1
14	57-0002-14	Spring Shoe	2
15	57-0002-15	Cup Shoe Hold Down	4
16	57-0002-16	Spring-Shoe Hold Down	2
17	57-0002-17	Adjusting Screw Assembly	1
18	57-0002-18	Spring-Shoe	1
19	57-0002-19	Spring Lever	1
20	57-0002-20	Spring-Adjusting screw	1
21	57-0002-21	#1 Shoe Hold Down Pin	2
22	57-0002-22	Cover Plate-Adjusting Hole	1
23	57-0002-23	Replacement Bleeder	1
24	57-0002-24	Plastic Plug	1
25	57-0002-25	Plastic Plug	1
	57-0002-26	Wheel Cylinder Repair Kit (Not Shown) Includes Spring, Cup & Boot	1
26	57-0004	13" Brake Drum	AR
27	57-0007	Brake Mount Donut (2-3/4" Dia. Spindle)	AR
	57-0034	Brake Mount Donut (3" Dia. Spindle)	AR
	57-0041	Brake Mount Donut (3-1/2" Dia. Spindle)	AR

# STEEL STRINGER TIE DOWN KIT



WagonGear-SteelStringerTieDownKit.cdr

KEY	PART NO.	QTY.	DESCRIPTION
	52-0003S	1	Tie Down Kit w/ 4 Tie Down Brackets (Steel Stringer)
	X-RISER-HD-3-KIT	1	HD Riser Clearance Kit W/Four 3" Riser Tube Weldments
	X-RISER-HD-4-KIT	1	HD Riser Clearance Kit W/Four 4" Riser Tube Weldments
1	25-0084	4	Bracket
	75-3342	4	3" Hi Rise Stake Pocket Weldment
	75-3343	4	4" Hi Rise Stake Pocket Weldment
2	52-0003-1	4	51" Standard Tie Down Chain
	75-0341-4-HD	4	61" Heavy Duty Tie Down Chain for Riser Option
3	851-3816-1.5Z	4	Bolt, Hex Machine-3/8x1-1/2
4	805-0038-Z	8	3/8 Flat Washer
5	815-3816-Z	4	3/8 Lock Nut
6	851-5013-1.5-Z	8	1/2x1-1/2 Hex Machine Bolt
7	805-0050-Z	8	1/2 Flat Washers
8	815-5013-Z	8	1/2 Lock Nuts

This Page Intentionally Blank

This Page Intentionally Blank

This Page Intentionally Blank

